

In the format provided by the authors and unedited.

The purinergic receptor P2RX7 directs metabolic fitness of long-lived memory CD8⁺ T cells

Henrique Borges da Silva^{1,2}, Lalit K. Beura^{1,3}, Haiguang Wang^{1,2}, Eric A. Hanse^{1,2}, Reshma Gore⁴, Milcah C. Scott^{1,3}, Daniel A. Walsh^{1,2}, Katharine E. Block^{1,2}, Raissa Fonseca^{1,3}, Yan Yan^{1,2}, Keli L. Hippen^{1,5}, Bruce R. Blazar^{1,5}, David Masopust^{1,3}, Ameeta Kelekar^{1,2}, Lucy Vulchanova⁴, Kristin A. Hogquist^{1,2} & Stephen C. Jameson^{1,2*}

¹Center for Immunology, University of Minnesota, Minneapolis, MN, USA. ²Department of Laboratory Medicine and Pathology, University of Minnesota, Minneapolis, MN, USA. ³Department of Microbiology and Immunology, University of Minnesota, Minneapolis, MN, USA. ⁴Department of Neuroscience, University of Minnesota, Minneapolis, MN, USA. ⁵Department of Pediatrics, University of Minnesota, Minneapolis, MN, USA. *e-mail: james024@umn.edu

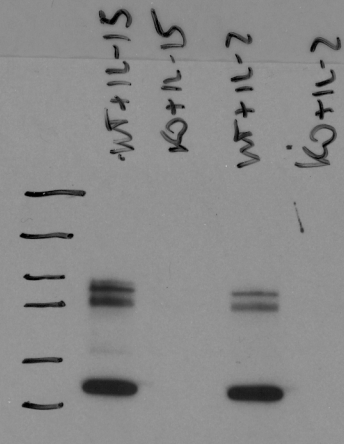
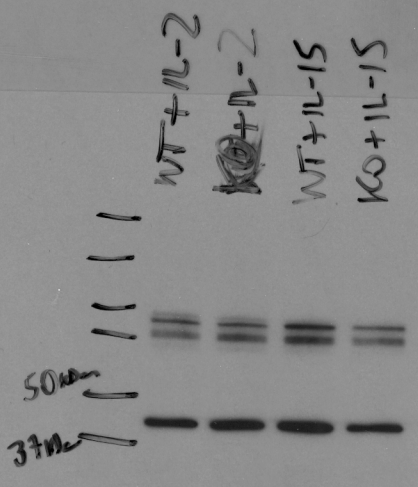
Supplementary Figures

Supplementary Figure 1.

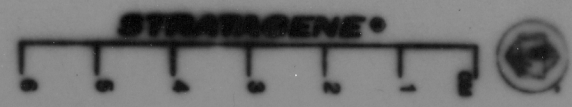
Original Western blot gel image. This is the source data for the image shown in Extended Data Fig. 6e, which comprise the set of lanes on the left. The lanes on the right comprised of a partial replicate (WT samples only). The position of molecular weight markers is indicated, and two are labeled indicating 37 and 50kD – the other markers are, in ascending order, 75, 100, 150 and 250kD.

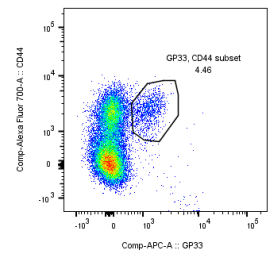
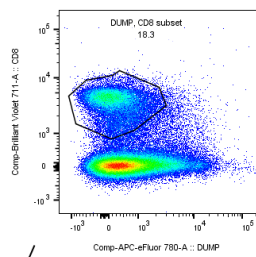
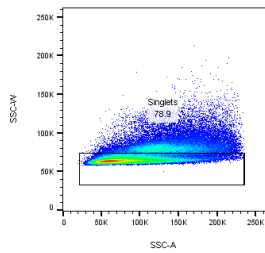
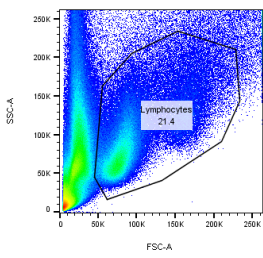
Supplementary Figure 2.

Representative flow cytometry gating strategy. Most of the images are from a sample of splenocytes from animals cotransferred with WT and *P2rx7^{-/-}* P14 cells and infected with LCMV. The sequential gating represents (clockwise from upper left): FSC (size) vs SSC (granularity) → singlet events → CD8+ve vs “Dump”-ve → LCMV gp33/D^b tetramer +ve → CD45.1 vs CD45.2 congenic markers → CD44hi vs CD62Lhi. The center image is from a sample of small intestine IEL, chosen to indicate a typical profile for intravascular staining: axes are intravascular [i.v.] CD8 staining vs *in vitro* CD8 staining.

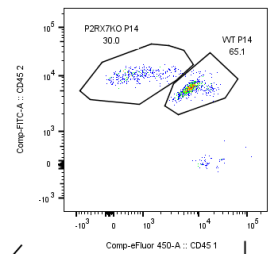
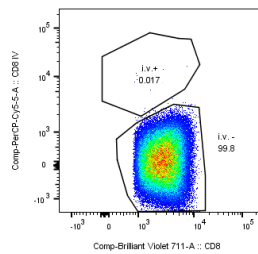


Opa1
beta-actin





To define tissue-resident
 (CD8 i.v.-) cells



P2RX7KO P14

WT P14

