

SUPPLEMENTAL FIGURES

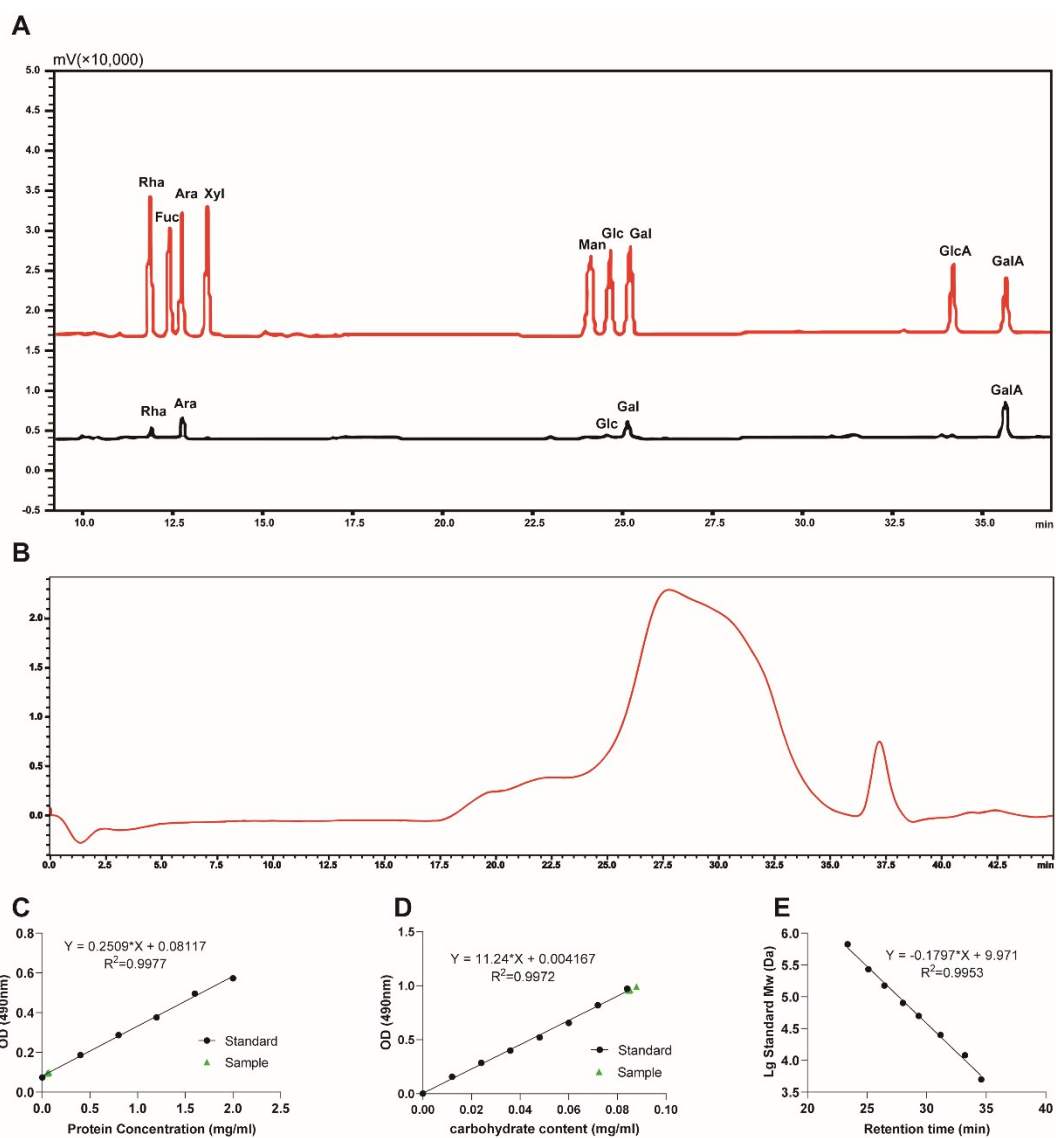


Figure S1

(A) Monosaccharide composition of FCPS. (B) molecular weight of FCPS. (C) standard curve of protein concentration. (D) standard curve of carbohydrate content. (E) retention time of standard sample.

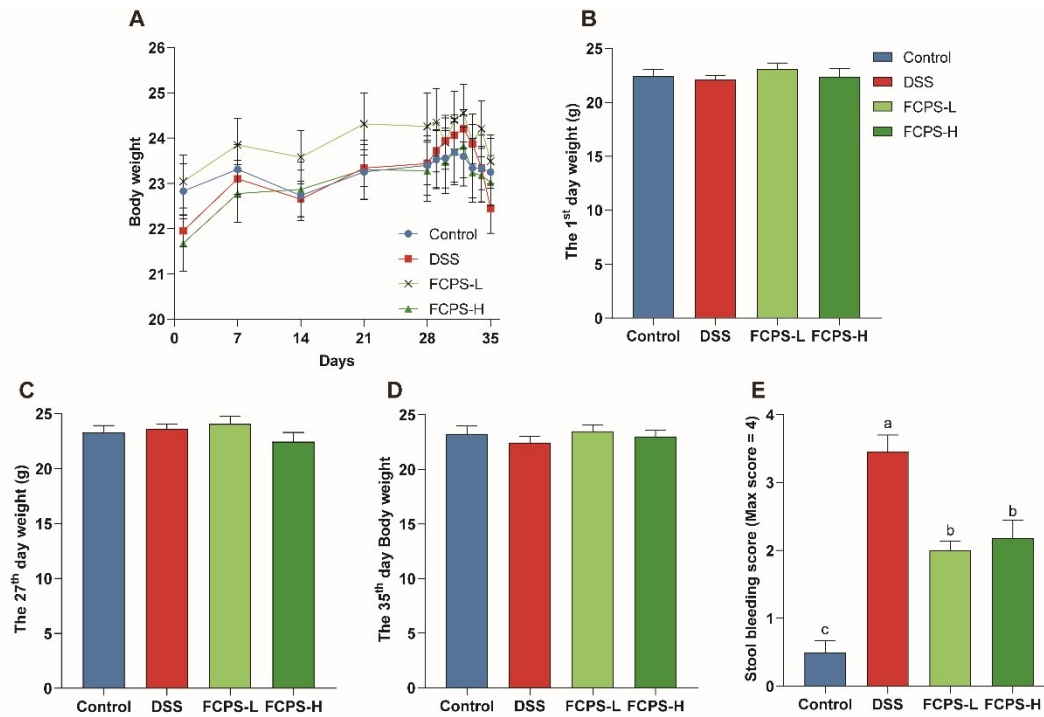
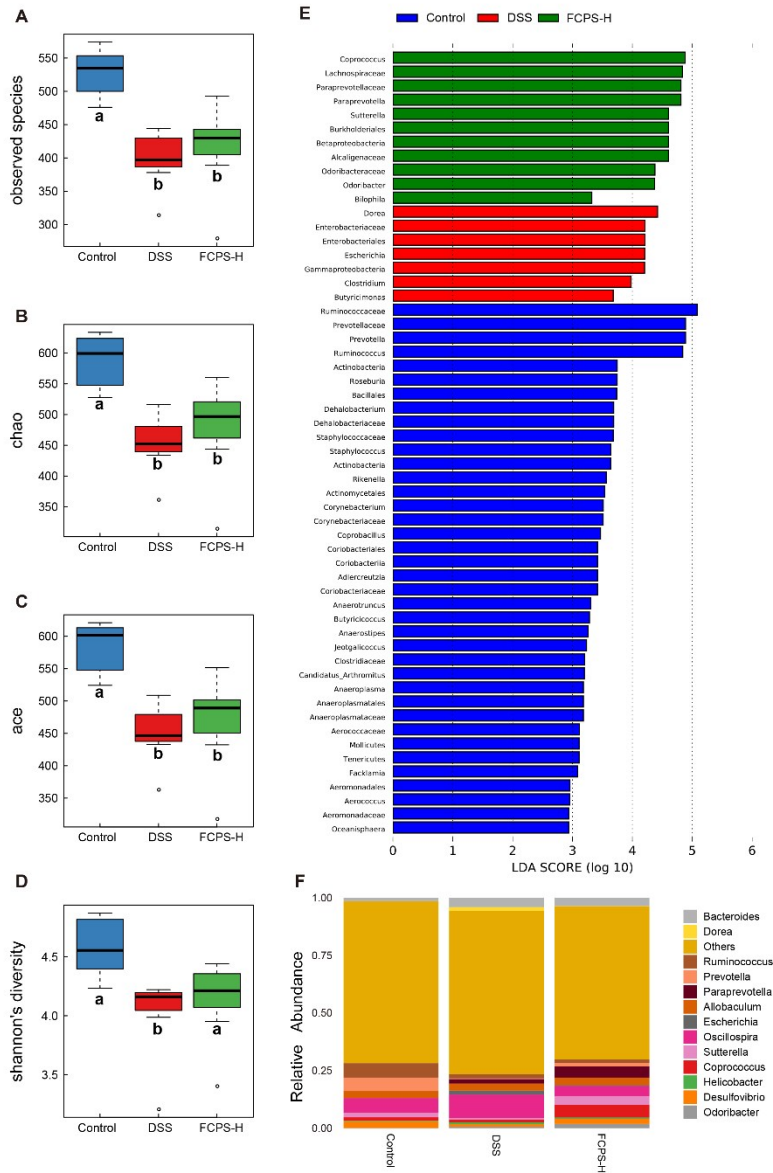


Figure S2

(A) The body weight of mice during experiment. (B) The body weight of mice on 1st day of the experiment. (C) The body weight of mice on 27th day, i.e. the first day of DSS treatment. (D) The body weight of mice on 35th day, i.e. the end day of the experiment. (E) Stool bleeding score of mice on 35th day. The control group (n = 10 mice), the DSS group, FCPS-L group, and FCPS-H group (n = 11 mice)

Figure S3



(A-D) Box chart of alpha diversity illustrating diversity of each group. (E) Linear discriminant analysis effect size (LEfSe) of the FCPS treated mice. Data are presented as mean \pm SEM and statistical significance was determined by Kruskal-Wallis test (H-test) with (n=7 mice). The letters (a-b) indicated the significant differences of all treatment groups ($p < 0.05$).

Table S1**Table S1** Scoring System for Disease activity index (DAI) Changes in the Mice

Score	Loss of body weight	Blood in stools	formation of stools
0	< 1%	negative expression of occult blood	olid and granular
1	1-5%	weakly positive expression of occult blood	soft and granular
2	5-10%	positive expression of occult blood	loose and had sign of liquid
3	10-15%	strongly positive expression of occult blood	/
4	> 15%	strongly positive and visible blood	/