

Applied Microbiology & Biotechnology

Marine bisindole alkaloid 2,2-bis(6-bromo-3-indolyl)ethylamine to control and prevent fungal growth on building material: a potential antifungal agent

Raffaella Campana*, Maurizio Sisti, Luigia Sabatini, Simone Lucarini

Department of Biomolecular Sciences, University of Urbino, 61029 Urbino (PU), Italy

*Corresponding author

Dr. Raffaella Campana, PhD,

Department of Biomolecular Sciences

Division of Toxicological, Hygiene and Environmental Sciences

Via S. Chiara 27, 61029

Urbino, Italy

Tel: +39 0722 303543

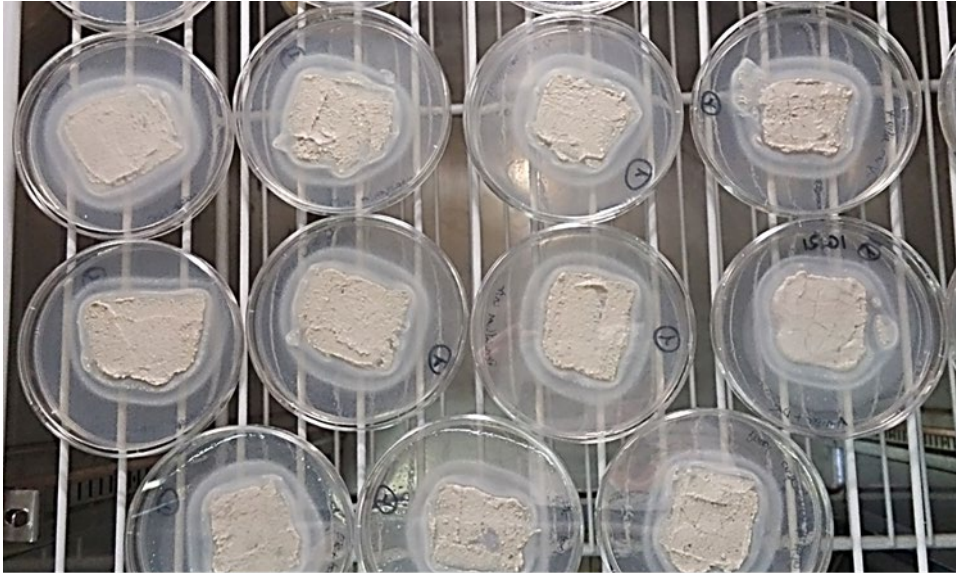
Fax: +39 0722 303541

e-mail: raffaella.campana@uniurb.it

Supplementary Table S1. List of the fungi used in this study with the related source of isolation.

Fungal species	Source of isolation
<i>A. corymbifera</i> EHS01	Hospital setting surfaces
<i>A. alternata</i> BC01	Environment
<i>A. flavipes</i> EHS02	Hospital setting surfaces
<i>A. flavus</i> IDRA01	Indoor air
<i>A. fumigatus</i> IDRAH01	Indoor air from hospital environment
<i>A. nidulans</i> IDRAH04	Indoor air from hospital environment
<i>A. terreus</i> IDRS023	Indoor setting surfaces
<i>A. versicolor</i> IDRA02	Indoor air
<i>A. ustus</i> IDRS08	Indoor setting surfaces
<i>F. solani</i> IDRS03	Indoor setting surfaces
<i>F. sporotrichioides</i> IDRS05	Indoor setting surfaces
<i>M. circinelloides</i> EHS03	Hospital setting surfaces
<i>P. citrinum</i> LC1	Environment
<i>Rhizopus</i> spp. IDRAH07	Indoor air from hospital environment
<i>T. rubrum</i> EHS05	Surfaces hospital setting
<i>T. tonsurans</i> EHS06	Surfaces hospital setting
<i>C. cladosporioides</i>	ATCC 16022

Supplementary Figure S1. Example of the building material IG21 (finishing plaster), distributed on NSA, and treated with 2,2-bis(6-bromo-3-indolyl)ethylamine (URB 1204) or commercial antifungal for the artificial contamination with different fungal strains.



Supplementary Figure S2. Representative visual observations of commercial antifungal effect on the growing of different fungi (*P. citrinum* LS1, *A. alternata* BC01 and *C. cladosporioides* ATCC 16022), alone and as mixed fungi, on the surface of IG21 (finishing plaster) after 28 days of incubation.

