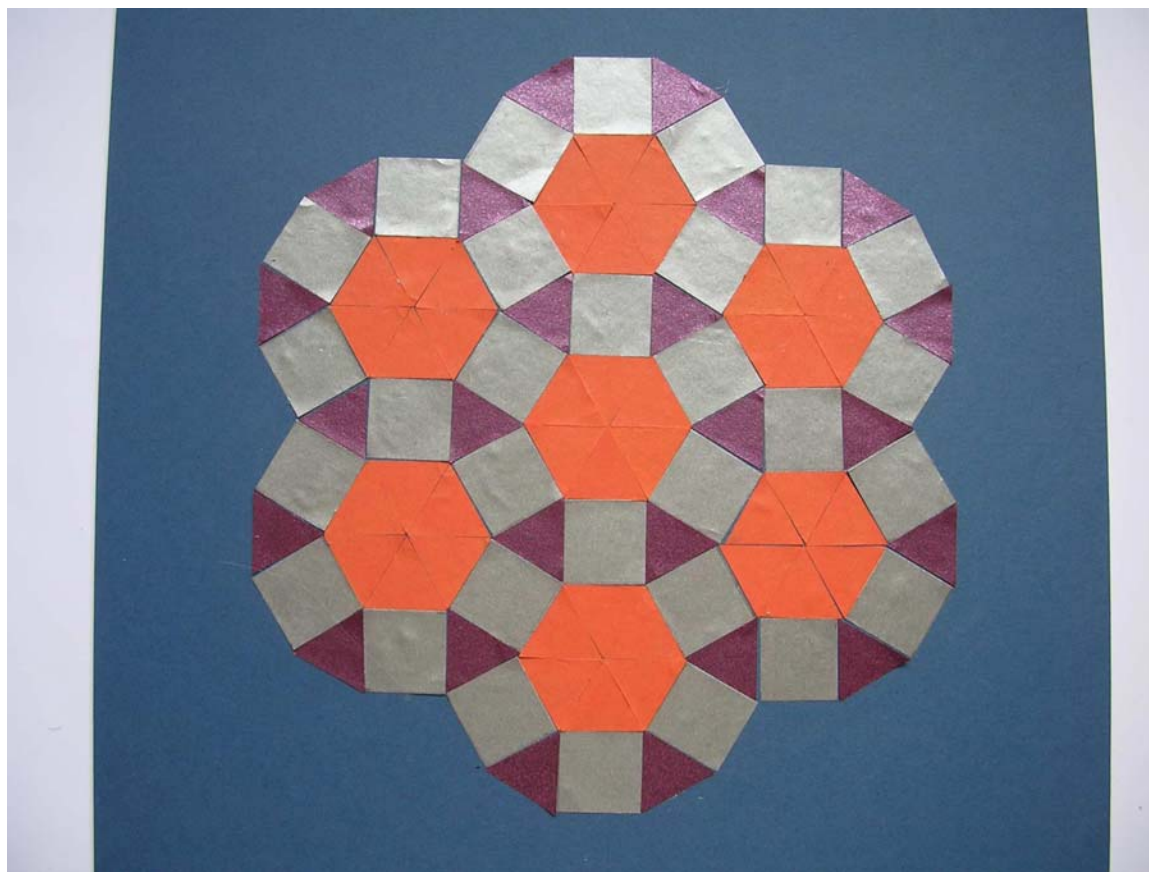
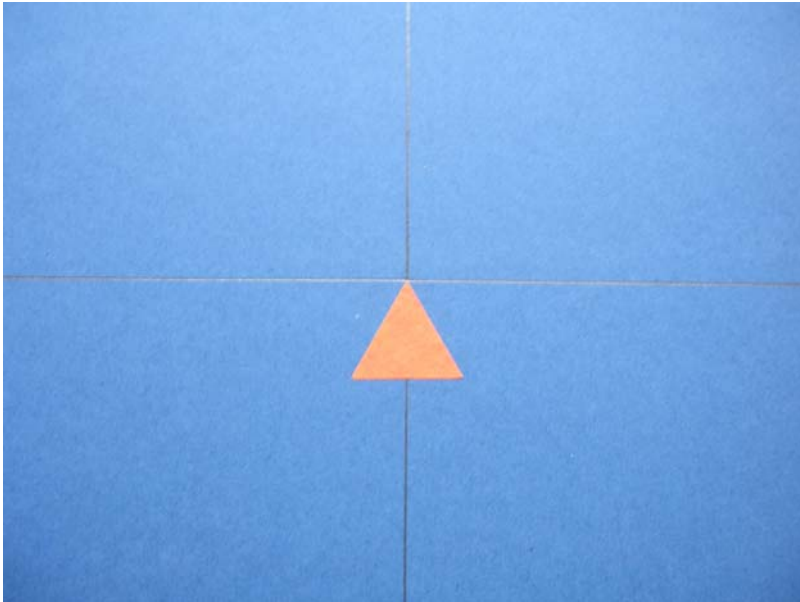


Creating a Mosaic Tile Using Equilateral Triangles and Squares

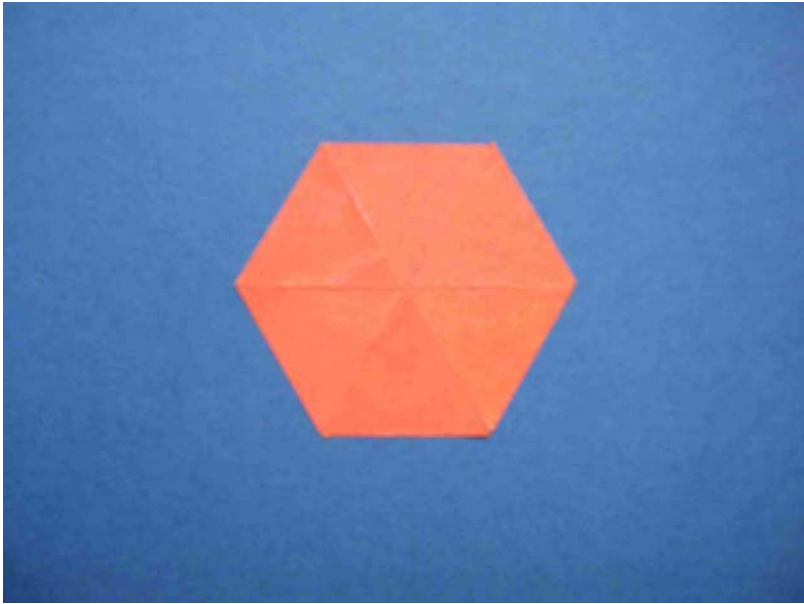


Step 1



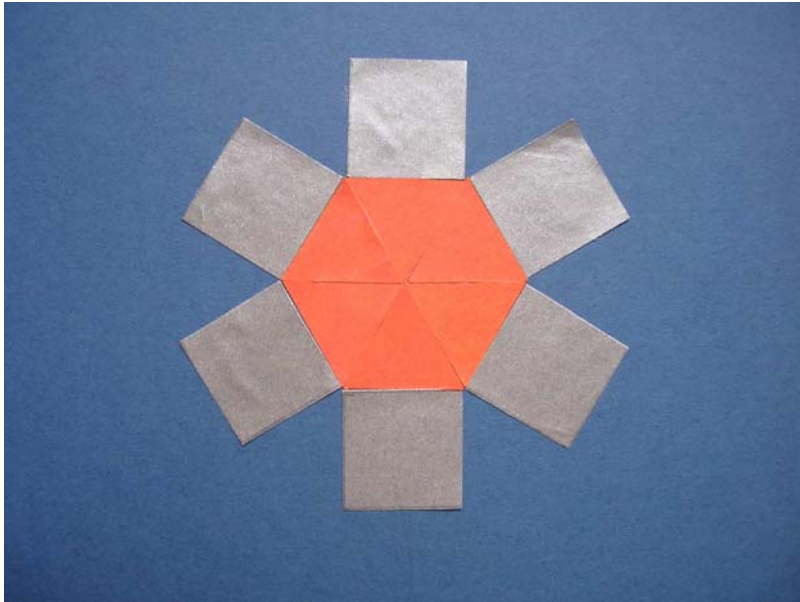
- Begin by dividing your base surface into four to find the centre.
- Place one triangle pointing up to meet the centre-point.
- Using the horizontal centre line as a guide, place a triangle either side of the first triangle. These triangles should point downwards and neatly touch the centre line and sides of the first triangle.

Step 2.



- Repeat the process above the centre line to create a hexagonal shape.

Step3



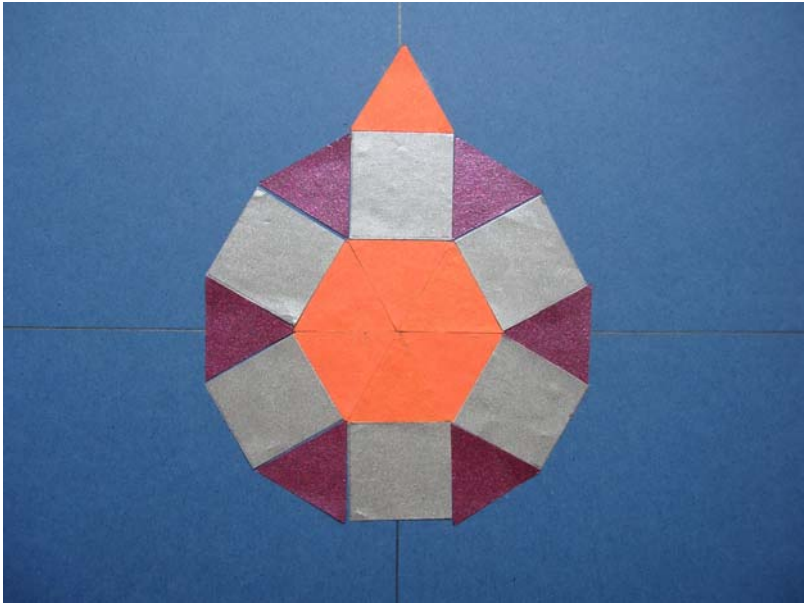
- Next to the flat face of each side of the hexagon stick down a square as shown.

Step 4



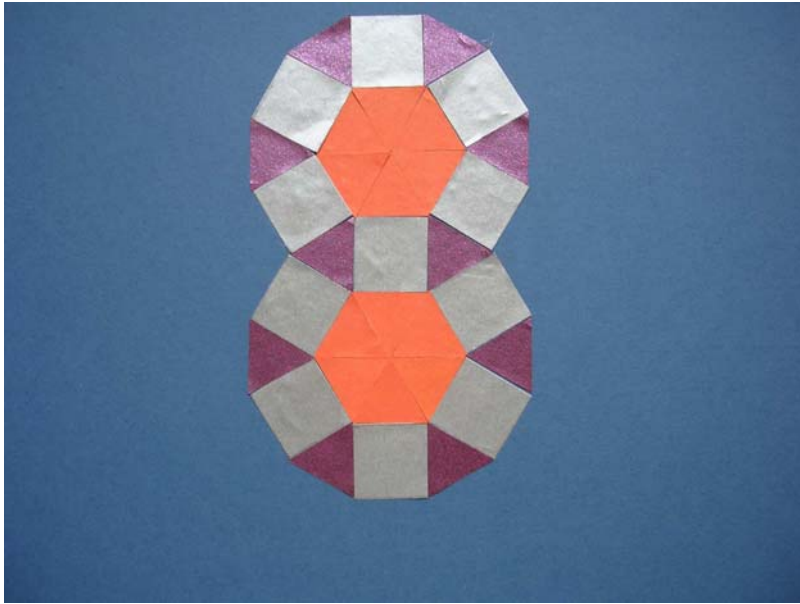
- In the spaces between each square stick in triangles of a different colour as shown. You have now finished the first part of the tile.

Step 5



- Begin the second part of the tile by sticking a triangle above the top central square so the triangle points upwards.
- Create your next section by using triangles to create a hexagon and then using the squares and other coloured triangles as previously shown.

Step 6



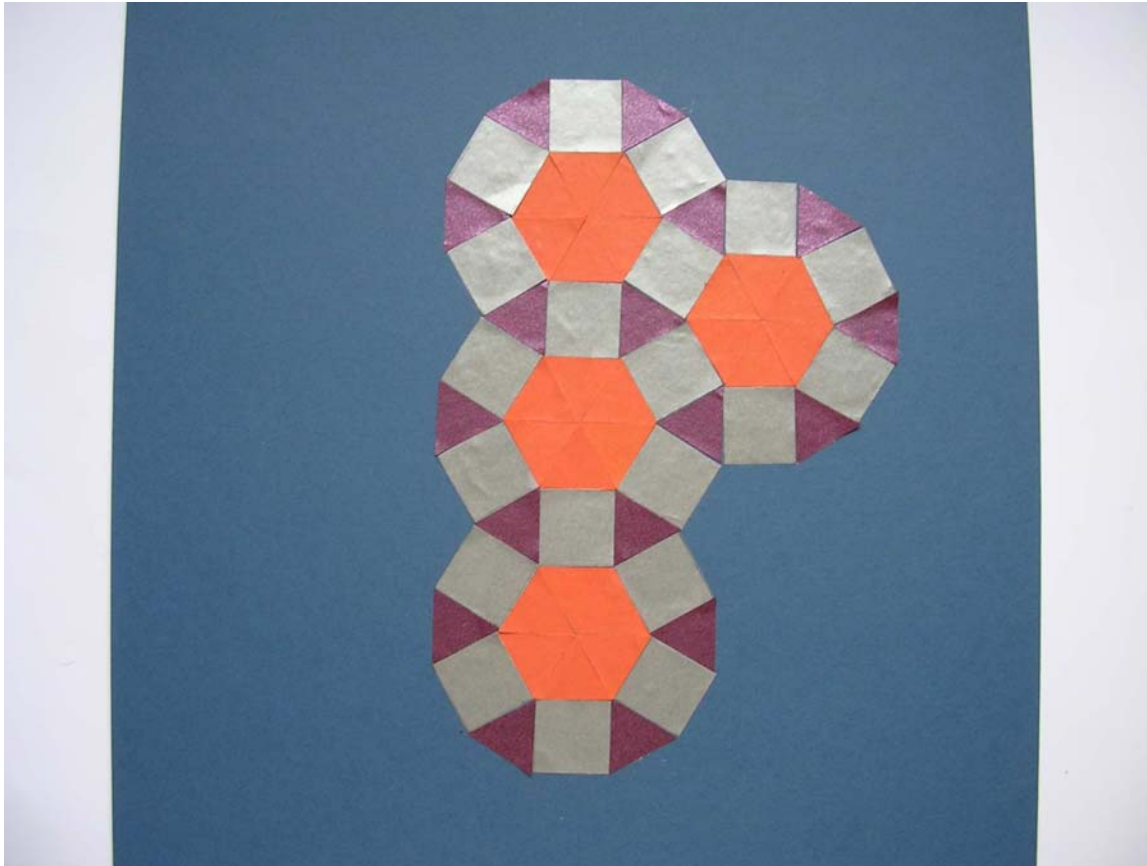
- Use triangles to fill in to create the hexagon shape and place the squares and other coloured triangles around it.
- Build up the mosaic by following the next stages...

Step 7

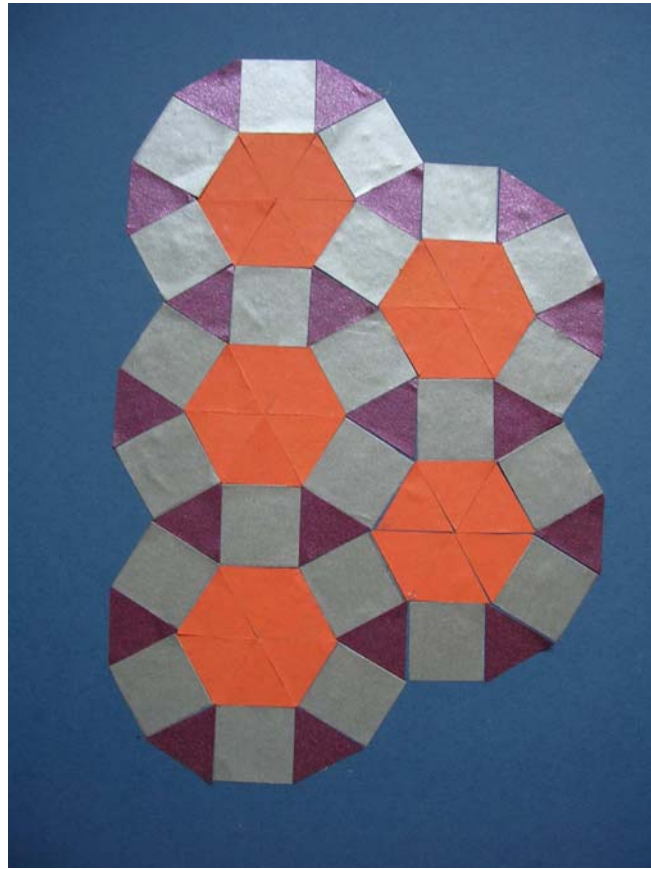


- In the same way as you have already worked create the next stage of the mosaic.
- The next few slides will show you how to finish your mosaic.

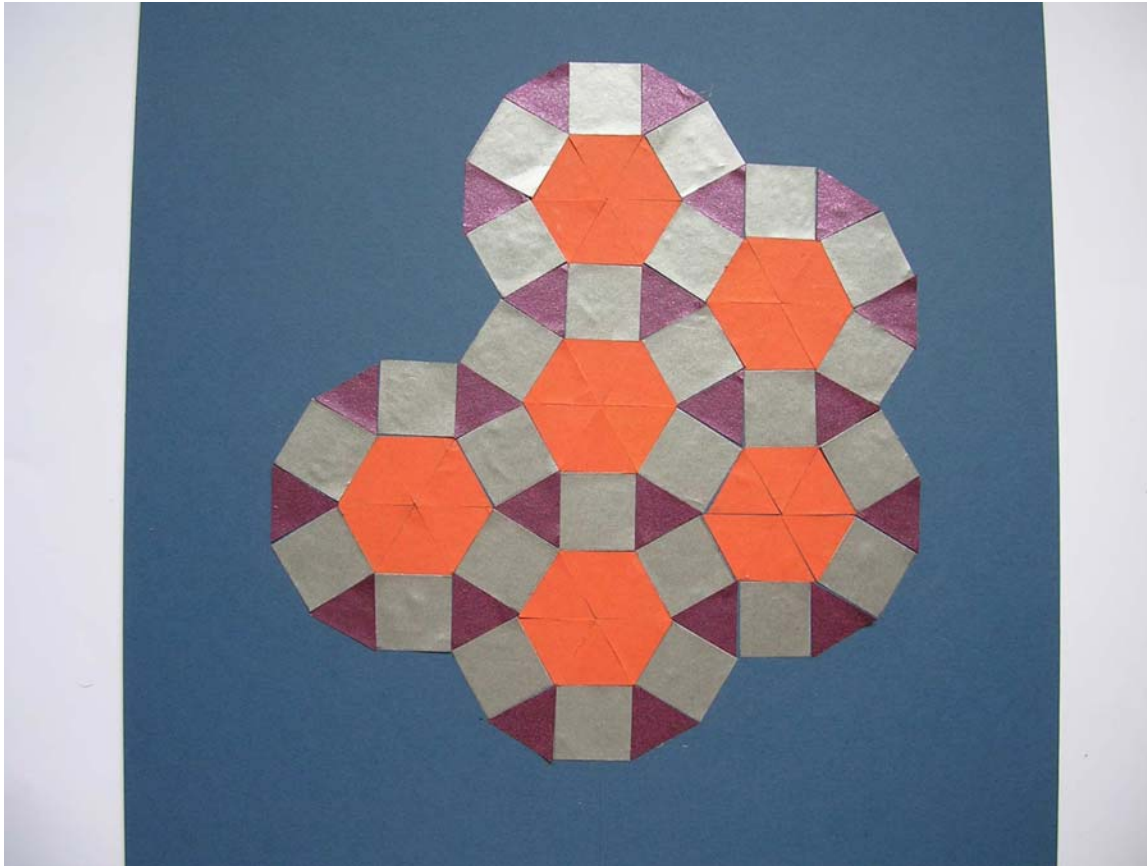
Step 8



Step 9



Step 10



Step 11

