

Comparative cytomolecular analyses reveal karyotype variability related to biogeographic and species richness patterns in Bombacoideae (Malvaceae)

Plant Systematics and Evolution

Lucas Costa^{1*} · Álex Oliveira^{1*} · Jefferson Carvalho-Sobrinho² · Gustavo Souza¹

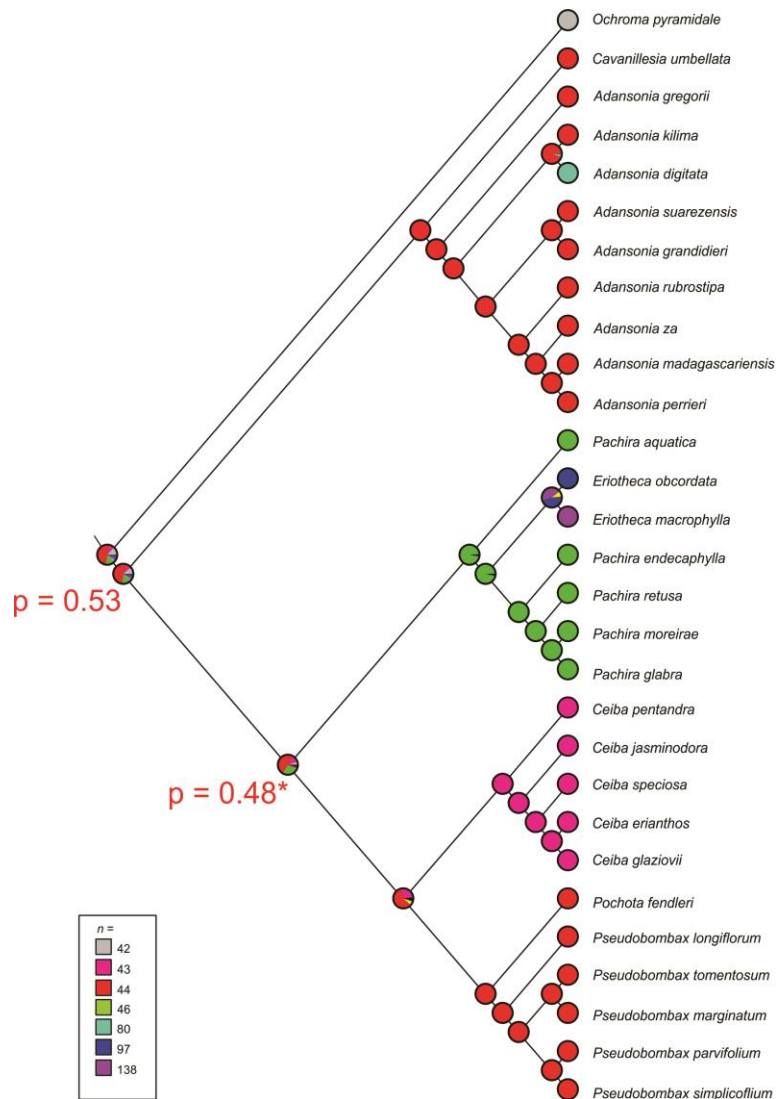
¹ Laboratory of Plant Cytogenetics and Evolution, Department of Botany, Federal University of Pernambuco, 50670-420, Recife, Brazil

² Colegiado de Ciências Biológicas, Universidade Federal do Vale do São Francisco, BR-407, Km 12, Vila CS-01, Petrolina, PE, 56300-990, Brazil.

* These authors contributed equally to this work.

✉ Gustavo Souza

lgrsouza@hotmail.com



Online Resource 3 – Ancestral character reconstruction of chromosome number reconstruction for Bombacoideae as shown on an ultrametric tree based on Carvalho-Sobrinho et al. (2016) rooted on *Ochroma pyramidale*. Ancestral state reconstruction were performed using ML optimization as implemented in Mesquite. Pie charts represent the probabilities of inferred chromosome numbers. * = highest probability of ancestral chromosome number for the Kapok clade.