

**A Digital Endocranial Cast of the Early Paleocene (Puercan) ‘Archaic’ Mammal
Onychodectes tisonensis (Eutheria: Taeniodonta)**

James G. Napoli^{1,2}, Thomas E. Williamson³, Sarah L. Shelley², Stephen L. Brusatte^{2,3}

¹Department of Earth, Environmental, and Planetary Sciences, Brown University, 69 Brown Street, Box 5385, Providence, Rhode Island 02912.

*Corresponding Author. Email: james_napoli@brown.edu Phone: (631) 680-8973

²School of GeoSciences, University of Edinburgh, Grant Institute, James Hutton Road, Edinburgh EH9 3FE, Scotland, UK.

³New Mexico Museum of Natural History and Science, 1801 Mountain Road, NW, Albuquerque, NM 87104-1375, USA

Figures on next two pages.

Fig. 7 Composite phylogenetic tree assembled based on Bertrand et al. (2016), Blanga-Kanfi et al. (2009), de Muizon et al. (2015), Dozo and Martinez (2015), Rook and Hunter (2013), O’Leary et al. (2013), Orliac et al. (2012), and Simpson (1933).

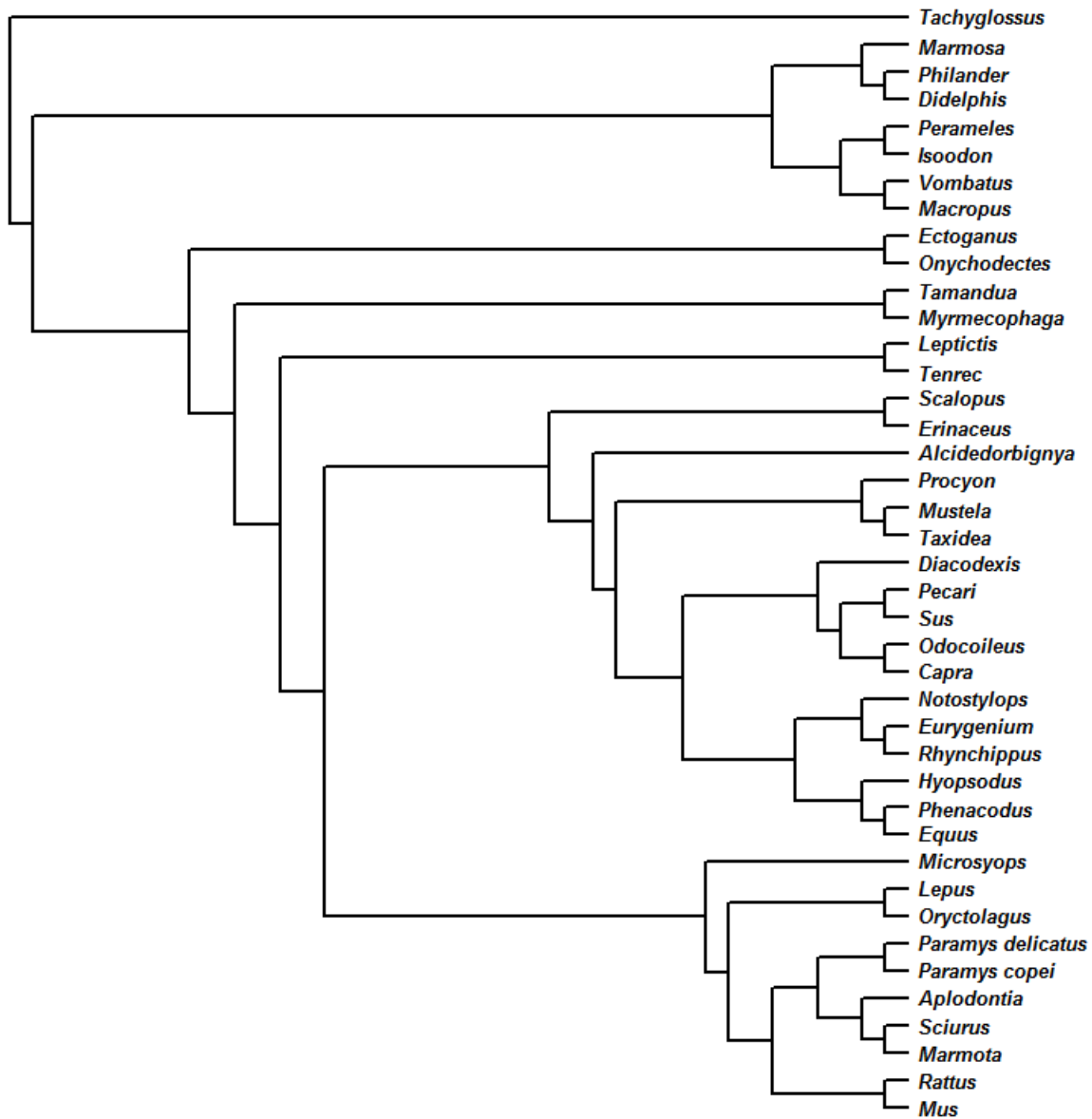


Fig. 8 Same phylogenetic tree as in Fig. 7, after branch-length estimation and time scaling.

