

## Appendix to “Party institutionalization and intra-party preference homogeneity”

Table A1. Items measuring attitudes towards economic, sociocultural issues, European integration, and protection of the environment .....	2
Table A2. Regression table for Figure 3 .....	3
Table A3. Regression table for Figure 4 .....	4
Figure A1. Version of Figure 4 with interactions for routinization in one model.....	5
Figure A2. Version of Figure 4 with interactions for value infusion in one model .....	5
Table A4. Determinants of intra-party preference homogeneity – Baseline models estimated as multilevel random effect models .....	6
Figure A3: Constitutive issues, party institutionalization, and preference homogeneity – Version of figure 3 based on multilevel random effect models .....	7
Figure A4: Effects of party institutionalization on preference homogeneity, conditional on policy orientation and centralization – Version of figure 3 based on multilevel random effect models.....	8
Table A5. Determinants of intra-party preference homogeneity – Pooled baseline model with controls for party family included as fixed effect and random effect version.....	9
Table A6. Determinants of intra-party preference homogeneity – Baseline model with only one (the last) election per country .....	11
Figure A5. Version of Figure 3 with only one (the last) election per country .....	12
Figure A6. Version of Figure 4 with only one (the last) election per country .....	13
Figure A7. Version of Figure 2 excluding candidates who thought they could not win from the computation of homogeneity and value infusion – Joint distribution of routinization, value infusion and intra-party homogeneity .....	14
Table A7. Determinants of intra-party preference homogeneity – Baseline model excluding candidates who thought they could not win from the computation of homogeneity and value infusion.....	15
Figure A8. Version of Figure 3 excluding candidates who thought they could not win from the computation of homogeneity and value infusion .....	16
Figure A9. Version of Figure 4 excluding candidates who thought they could not win from the computation of homogeneity and value infusion .....	17
Table A8. Raw party level data (main variables only).....	18

**Table A1. Items measuring attitudes towards economic, sociocultural issues, European integration, and protection of the environment**

<i>Items</i>	<i>Response options/scales</i>
<i>Economic issues</i>	
“Providing a stable network of social security should be the prime goal of government.”	0: left; 1: right 1: strongly agree; 5: strongly disagree
“Income and wealth should be redistributed towards ordinary people.”	1: strongly agree; 5: strongly disagree
“Politics should abstain from intervening in the economy.”	1: strongly disagree; 5: strongly agree
<i>Socio-cultural issues</i>	
“Immigrants should be required to adjust to the customs of [country].”	0: libertarian; 1: authoritarian 1: strongly disagree; 5: strongly agree
“People who break the law should be given stiffer sentences.”	1: strongly disagree; 5: strongly agree
“Torturing a prisoner is never justified even if it might prevent a terrorist attack.”	1: strongly agree; 5: strongly disagree
“Same sex marriages should be prohibited by law.”	1: strongly disagree; 5: strongly agree
“Women should be free to decide on matters of abortion.”	1: strongly agree; 5: strongly disagree
<i>European integration</i>	
“Generally speaking, do you think that [country’s] membership of the European Union is a good thing, a bad thing, or neither good nor bad?”	0: anti EU; 1: pro EU 0: a bad thing; 1: neither good nor bad; 2: a good thing
“Some say European unification should be pushed further. Others say it already has gone too far. What is your opinion?”	0: has already gone too far; 10: should be pushed further
“All in all, are you very satisfied, fairly satisfied, not very satisfied or not at all satisfied with the way democracy works in the European Union?”	0: not at all satisfied; 3: very satisfied
<i>Environmental protection</i>	
“Stronger measures should be taken to protect the environment.”	1: pro; 5: anti 1: strongly agree; 5: strongly disagree
<i>Social justice issues</i>	
“Providing a stable network of social security should be the prime goal of government.”	0: left; 1: right 1: strongly agree; 5: strongly disagree
“Income and wealth should be redistributed towards ordinary people.”	1: strongly agree; 5: strongly disagree

*Note:* Positions on the economic and the socio-cultural dimension as well as on social justice issues are measured via additive indices (rescaled to range from zero to one) of the listed items; preferences on environmental protection is measured via a single item. Answers to all these items were given on a five-point Likert scale (strongly disagree, disagree, neither, agree, strongly agree) and have been coded so that higher values indicate more conservative (right wing) positions. Since the three items on European integration use different Likert scales, we recoded them to a common range (0 to 1) and computed an additive index.

**Table A2. Regression table for Figure 3**

	Environment	Environment	Social justice	Social justice
Party routinization	0.06 (0.12)		0.02 (0.11)	
Green parties	0.29 (0.17)	0.39*** (0.09)		
Green * Party routinization	-0.00 (0.27)			
Value infusion		0.19 (0.10)		0.07 (0.10)
Green * Value infusion		-0.24 (0.18)		
Left parties			0.07 (0.08)	0.30*** (0.07)
Left * Party routinization			0.06 (0.12)	
Left * Value infusion				-0.30* (0.13)
Party size	-0.25 (0.14)	-0.35*** (0.10)	-0.18 (0.12)	-0.10 (0.10)
Party age (log)	-0.01 (0.02)	0.01 (0.01)	-0.01 (0.01)	-0.01 (0.01)
Constant	0.65*** (0.07)	0.58*** (0.06)	0.60*** (0.06)	0.53*** (0.05)
<i>N parties</i>	119	141	116	133
<i>N elections</i>	24	23	22	21

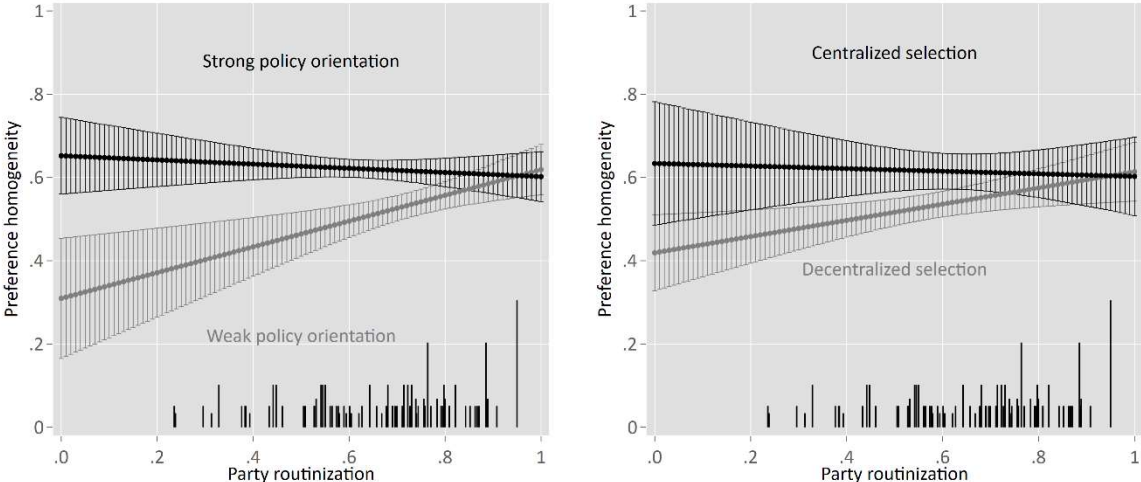
Notes: Coefficient from OLS-regressions with fixed effects at the election level; standard errors in parentheses; \*  $p < 0.05$ , \*\*  $p < 0.01$ , \*\*\*  $p < 0.001$ .

**Table A3. Regression table for Figure 4**

	Pooled issues	Pooled issues	Pooled issues	Pooled issues
Party routinization	1.25** (0.43)		0.25 (0.13)	
Policy orientation	1.18*** (0.34)	0.25 (0.26)	0.29** (0.11)	0.25* (0.10)
Party routinization * policy orientation	-1.28** (0.48)			
Candidate selection	0.12 (0.07)	0.20** (0.07)	0.35* (0.17)	0.38* (0.16)
Value infusion		0.23 (0.43)		0.35** (0.13)
Value infusion * policy orientation		-0.01 (0.49)		
Party routinization * candidate selection			-0.38 (0.29)	
Value infusion * candidate selection				-0.33 (0.26)
Party size	0.00 (0.10)	0.00 (0.09)	0.08 (0.11)	0.01 (0.09)
Party age (log)	-0.01 (0.01)	-0.00 (0.01)	-0.01 (0.01)	-0.01 (0.01)
<i>Issue (reference category: economic dimension)</i>				
Sociocultural dim.	0.05** (0.02)	0.05** (0.02)	0.05** (0.02)	0.05** (0.02)
European integration	-0.06** (0.02)	-0.06** (0.02)	-0.06** (0.02)	-0.06** (0.02)
Constant	-0.57 (0.30)	0.19 (0.23)	0.13 (0.12)	0.12 (0.12)
<i>N parties</i>	308	295	308	295
<i>N elections</i>	22	20	22	20

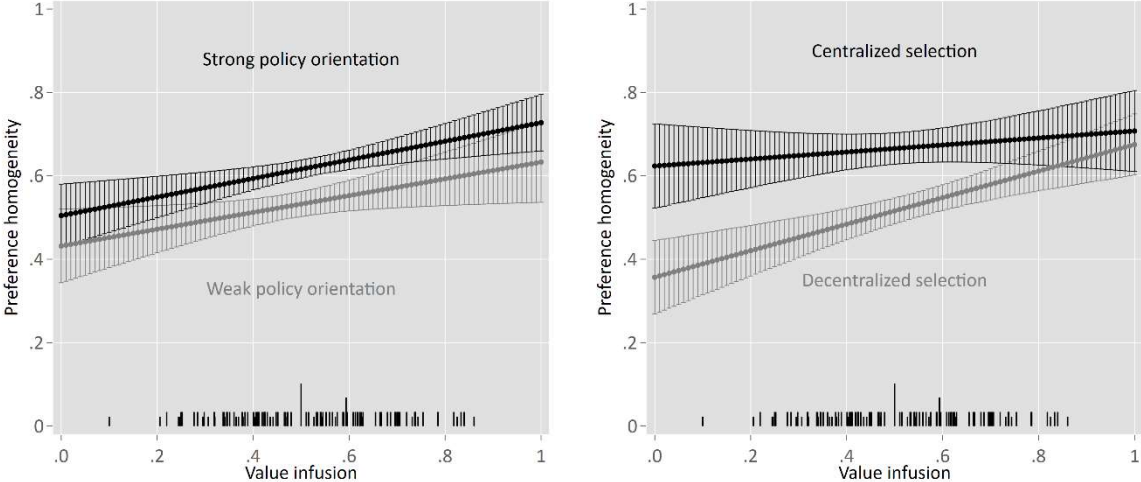
Notes: Coefficient from OLS-regressions with fixed effects at the election level; standard errors in parentheses; \*  $p < 0.05$ , \*\*  $p < 0.01$ , \*\*\*  $p < 0.001$ .

**Figure A1. Version of Figure 4 with interactions for routinization in one model**



*Notes:* Predicted values for preference homogeneity with 83% confidence intervals. Non-overlapping 83% confidence intervals indicate that the predicted values are different with approximately  $p < 0.05$ . Histogram with observed variables for measures of institutionalization added. Prediction made for 5<sup>th</sup> and 95<sup>th</sup> percentile of the moderator variable.

**Figure A2. Version of Figure 4 with interactions for value infusion in one model**



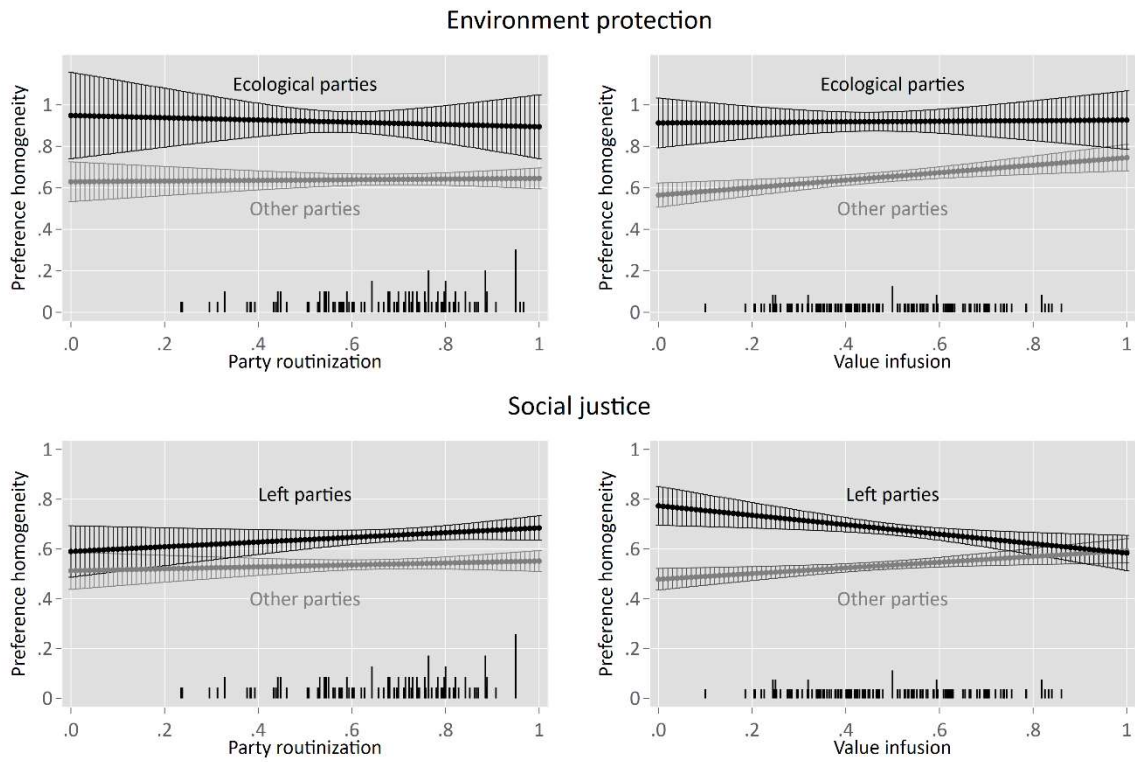
*Notes:* Predicted values for preference homogeneity with 83% confidence intervals. Non-overlapping 83% confidence intervals indicate that the predicted values are different with approximately  $p < 0.05$ . Histogram with observed variables for measures of institutionalization added. Prediction made for 5<sup>th</sup> and 95<sup>th</sup> percentile of the moderator variable.

**Table A4. Determinants of intra-party preference homogeneity – Baseline models estimated as multilevel random effect models**

	Economic dimension	Sociocultural dimension	EU integration	Pooled issues
Party routinization	0.11 (0.10)	0.13 (0.09)	0.14 (0.14)	0.12 (0.07)
Value infusion	0.18* (0.09)	0.11 (0.08)	0.28* (0.13)	0.18** (0.06)
Policy orientation	0.29* (0.14)	0.24 (0.13)	-0.04 (0.19)	0.17 (0.10)
Centralized selection	0.12 (0.08)	0.00 (0.07)	0.07 (0.11)	0.09 (0.05)
Party size	-0.11 (0.13)	-0.14 (0.12)	0.21 (0.22)	-0.04 (0.09)
Party age (log)	-0.01 (0.01)	-0.02 (0.01)	-0.03 (0.02)	-0.02 (0.01)
<i>Issue (reference category: economic dimension)</i>				
Sociocultural dim.				0.05** (0.02)
European integration				-0.05** (0.02)
Constant	0.16 (0.15)	0.37** (0.13)	0.35 (0.20)	0.29** (0.10)
<b>Random effect standard deviations</b>				
Intercept (election level)	2.43e-10	0.03	5.45e-13	6.52e-11
Intercept (country level)	0.08	0.05	0.06	0.05
<b>Residual intraclass correlation (ICC)</b>				
Election level	0.39	0.17	0.13	0.16
Country level	0.39	0.26	0.13	0.16
<b>Observations</b>				
N parties	102	107	86	295
N elections	19	20	16	20
N countries	14	15	12	15

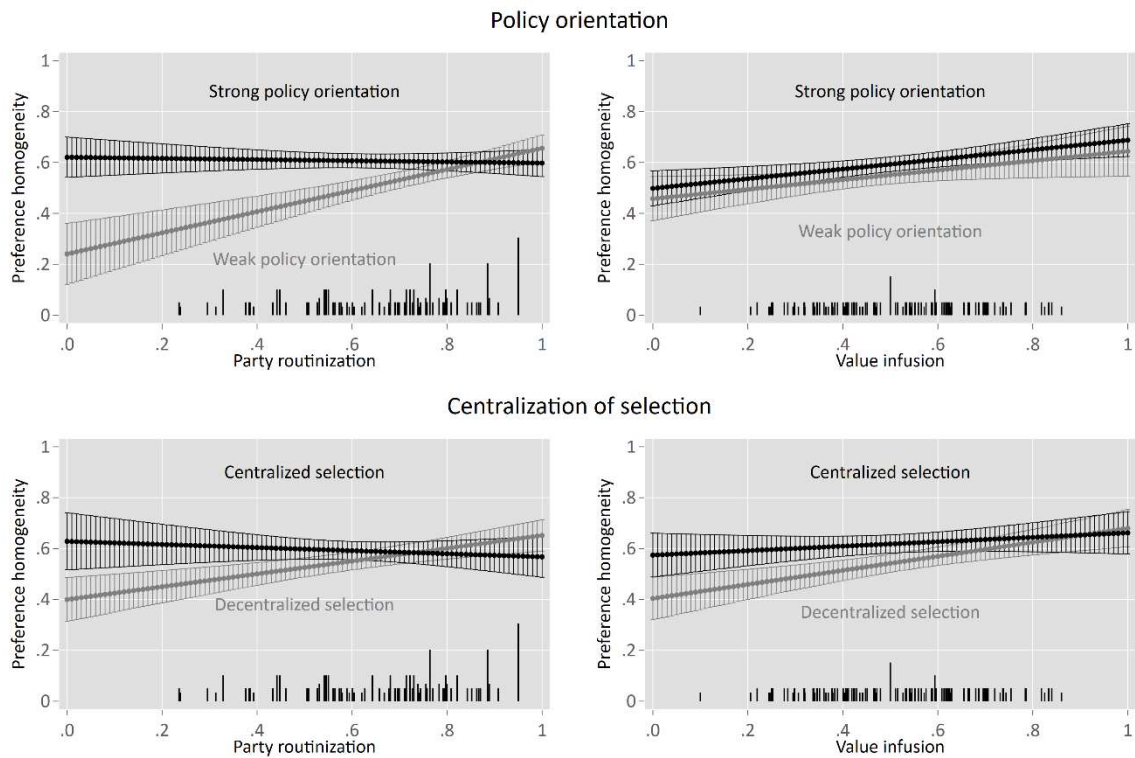
*Notes:* Coefficient from multilevel model with three levels (level 1: parties, level 2: elections, level 3: countries) and random intercepts at the election and country level; fit by restricted maximum likelihood; standard errors in parentheses; \*  $p < 0.05$ , \*\*  $p < 0.01$ , \*\*\*  $p < 0.001$ .

**Figure A3: Constitutive issues, party institutionalization, and preference homogeneity – Version of figure 3 based on multilevel random effect models**



*Notes:* Predicted values for preference homogeneity with 83% confidence intervals. Non-overlapping 83% confidence intervals indicate that the predicted values are different with approximately  $p < 0.05$ . Histogram with observed variables for measures of institutionalization added.

**Figure A4: Effects of party institutionalization on preference homogeneity, conditional on policy orientation and centralization – Version of figure 3 based on multilevel random effect models**



*Notes:* Predicted values for preference homogeneity with 83% confidence intervals. Non-overlapping 83% confidence intervals indicate that the predicted values are different with approximately  $p < 0.05$ . Histogram with observed variables for measures of institutionalization added. Prediction made for 5th and 95th percentile of the moderator variable.



**Table A5. Determinants of intra-party preference homogeneity – Pooled baseline model with controls for party family included as fixed effect and random effect version**

	(1) Fixed effect model	(2) Random effect model
Party routinization	0.19 <sup>+</sup> (0.10)	0.13 <sup>+</sup> (0.07)
Value infusion	0.14 (0.09)	0.17** (0.06)
Policy orientation	0.15 (0.13)	-0.01 (0.10)
Centralized selection	0.10 (0.08)	0.04 (0.06)
Party size	-0.03 (0.13)	0.01 (0.10)
Party age (log)	-0.01 (0.01)	-0.02 (0.01)
<i>Party family (reference category: conservative)</i>		
Ecologist	0.12** (0.05)	0.14*** (0.04)
Communist	0.10* (0.04)	0.11** (0.04)
Social-democrat	0.09** (0.03)	0.10** (0.03)
Liberal	0.07 <sup>+</sup> (0.04)	0.07 <sup>+</sup> (0.04)
Christian-democrat	0.05 (0.04)	0.05 (0.04)
Nationalist	0.11* (0.06)	0.09 <sup>+</sup> (0.05)
Agrarian	0.04 (0.04)	0.04 (0.04)
Ethnic-regional	0.13** (0.05)	0.13** (0.05)
Special issue	-0.04 (0.07)	-0.06 (0.06)
<i>Issue (reference category: economic dimension)</i>		
Sociocultural dim.	0.05** (0.02)	0.05** (0.02)
European integration	-0.06** (0.02)	-0.05** (0.02)
Constant	0.18 (0.14)	0.37*** (0.11)
<b>Random effect standard deviations</b>		
Intercept (election level)		1.80e-10
Intercept (country level)		0.03
<b>Residual intraclass correlation (ICC)</b>		
Election level		0.08
Country level		0.08
<b>Observations</b>		
N parties	295	295
N elections	20	20

---

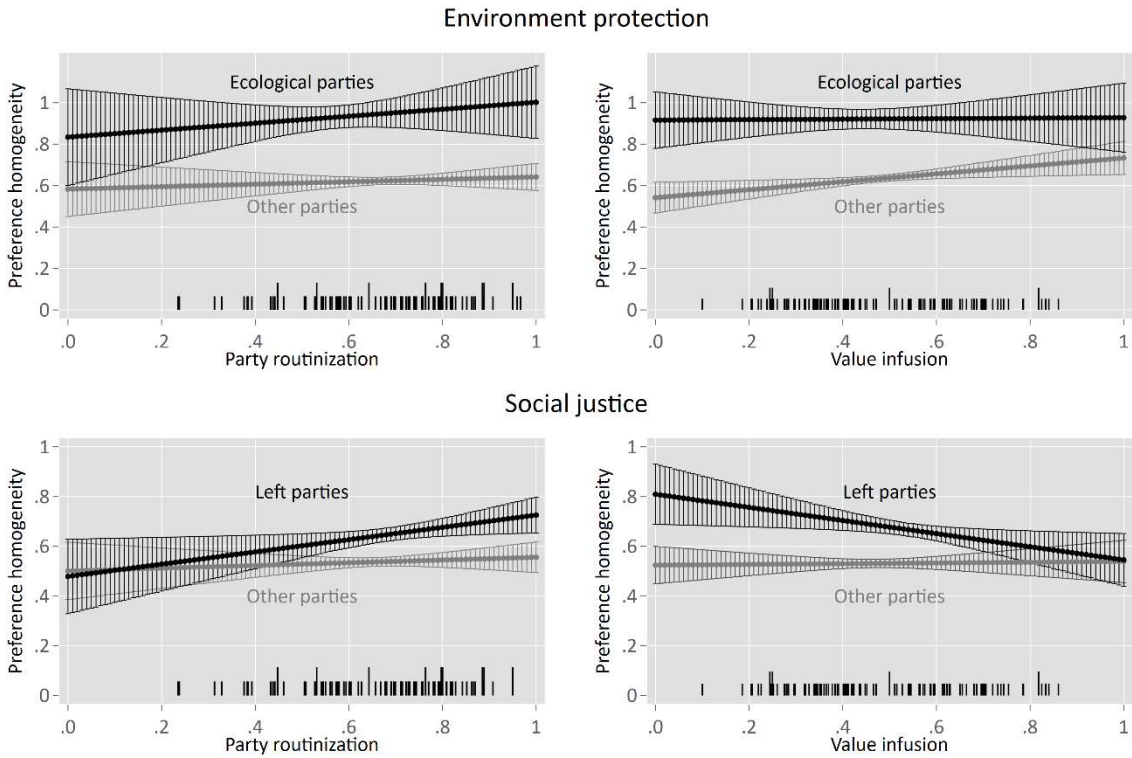
*Notes:* Model 1: Coefficient from OLS-regressions with fixed effects at the election level; Model 2: Coefficient from multilevel model with three levels (level 1: parties, level 2: elections, level 3: countries) and random intercepts at the election and country level fit by restricted maximum likelihood; standard errors in parentheses; \*  $p < 0.10$ ,  $p < 0.05$ , \*\*  $p < 0.01$ , \*\*\*  $p < 0.001$ .

**Table A6. Determinants of intra-party preference homogeneity – Baseline model with only one (the last) election per country**

	Economic dimension	Sociocultural dimension	EU integration	Pooled issues
Party routinization	0.19 (0.16)	0.19 (0.14)	-0.04 (0.25)	0.11 (0.10)
Value infusion	0.28* (0.13)	0.19 (0.12)	0.31 (0.24)	0.24* (0.09)
Policy orientation	0.40 (0.21)	0.49** (0.17)	-0.06 (0.30)	0.26* (0.13)
Centralized selection	0.23 (0.13)	0.18 (0.12)	0.16 (0.21)	0.19* (0.09)
Party size	-0.25 (0.18)	-0.29 (0.17)	0.34 (0.33)	-0.10 (0.13)
Party age (log)	-0.01 (0.02)	-0.02 (0.02)	-0.01 (0.03)	-0.01 (0.01)
<i>Issue (reference category: economic dimension)</i>				
Sociocultural dim.				0.03 (0.02)
European integration				-0.08*** (0.02)
Constant	-0.08 (0.25)	-0.00 (0.19)	0.36 (0.34)	0.14 (0.15)
<i>N parties</i>	78	83	67	228
<i>N elections/countries</i>	14	15	12	15

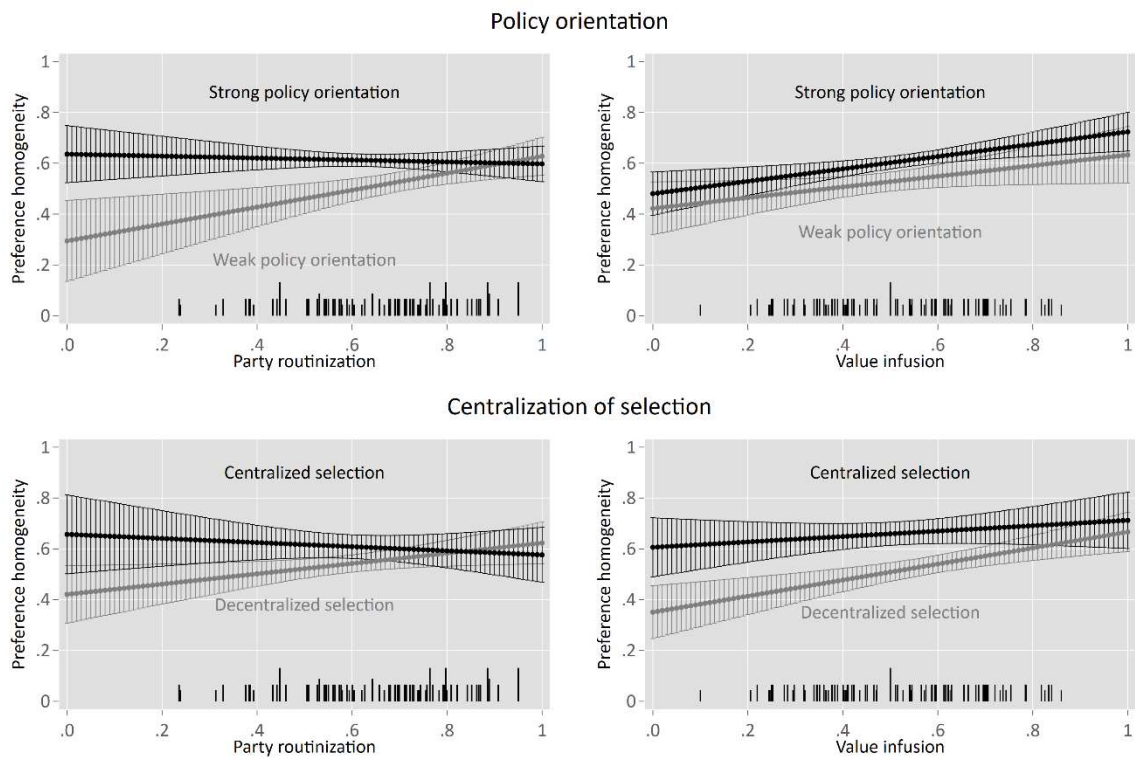
Notes: Coefficient from OLS-regressions with fixed effects at the election level; standard errors in parentheses; \*  $p < 0.05$ , \*\*  $p < 0.01$ , \*\*\*  $p < 0.001$ .

**Figure A5. Version of Figure 3 with only one (the last) election per country**



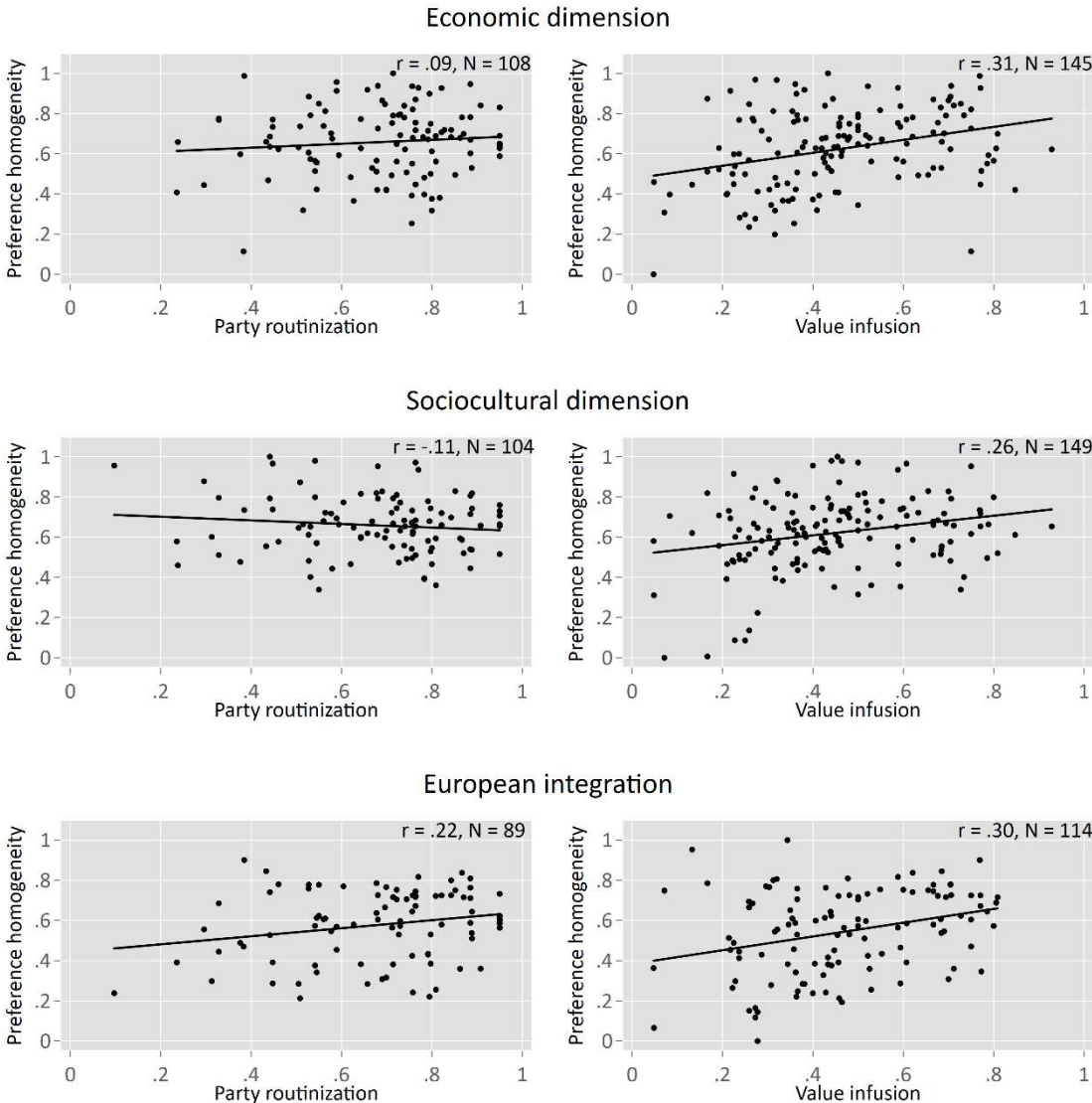
*Notes:* Predicted values for preference homogeneity with 83% confidence intervals. Non-overlapping 83% confidence intervals indicate that the predicted values are different with approximately  $p < 0.05$ . Histogram with observed variables for measures of institutionalization added.

**Figure A6. Version of Figure 4 with only one (the last) election per country**



*Notes:* Predicted values for preference homogeneity with 83% confidence intervals. Non-overlapping 83% confidence intervals indicate that the predicted values are different with approximately  $p < 0.05$ . Histogram with observed variables for measures of institutionalization added. Prediction made for 5th and 95th percentile of the moderator variable.

**Figure A7. Version of Figure 2 excluding candidates who thought they could not win from the computation of homogeneity and value infusion – Joint distribution of routinization, value infusion and intra-party homogeneity**

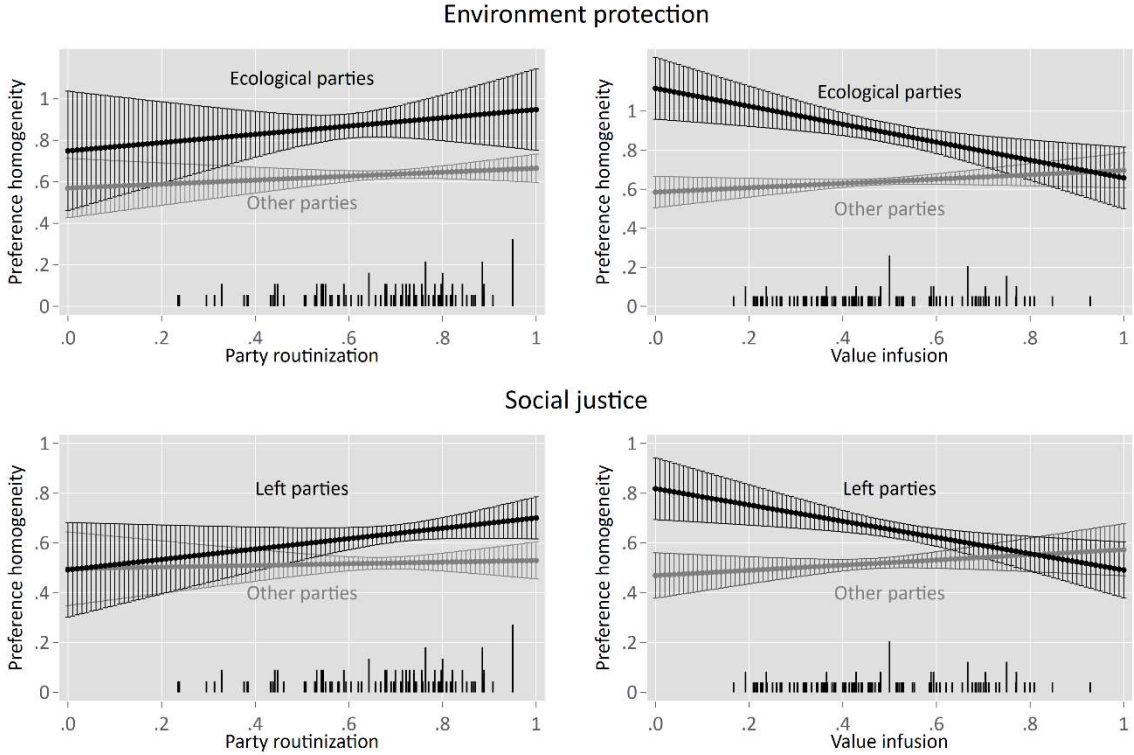


**Table A7. Determinants of intra-party preference homogeneity – Baseline model excluding candidates who thought they could not win from the computation of homogeneity and value infusion**

	Economic dimension	Sociocultural dimension	EU integration	Pooled issues
Party routinization	0.07 (0.21)	-0.05 (0.16)	-0.00 (0.20)	-0.00 (0.11)
Value infusion	0.12 (0.16)	-0.12 (0.14)	0.41* (0.19)	0.11 (0.10)
Policy orientation	0.72* (0.28)	0.38 (0.21)	-0.06 (0.27)	0.31* (0.15)
Centralized selection	0.60*** (0.17)	0.12 (0.14)	0.13 (0.17)	0.29** (0.09)
Party size	-0.05 (0.25)	0.14 (0.21)	0.20 (0.29)	0.08 (0.15)
Party age (log)	-0.01 (0.03)	0.02 (0.02)	-0.02 (0.03)	-0.00 (0.01)
<i>Issue (reference category: economic dimension)</i>				
Sociocultural dim.				-0.01 (0.02)
European integration				-0.11*** (0.02)
Constant	-0.30 (0.30)	0.29 (0.22)	0.41 (0.28)	0.23 (0.16)
<i>N parties</i>	96	100	82	278
<i>N elections/countries</i>	19	20	16	20

Notes: Coefficient from OLS-regressions with fixed effects at the election level; standard errors in parentheses; \*  $p < 0.05$ , \*\*  $p < 0.01$ , \*\*\*  $p < 0.001$ .

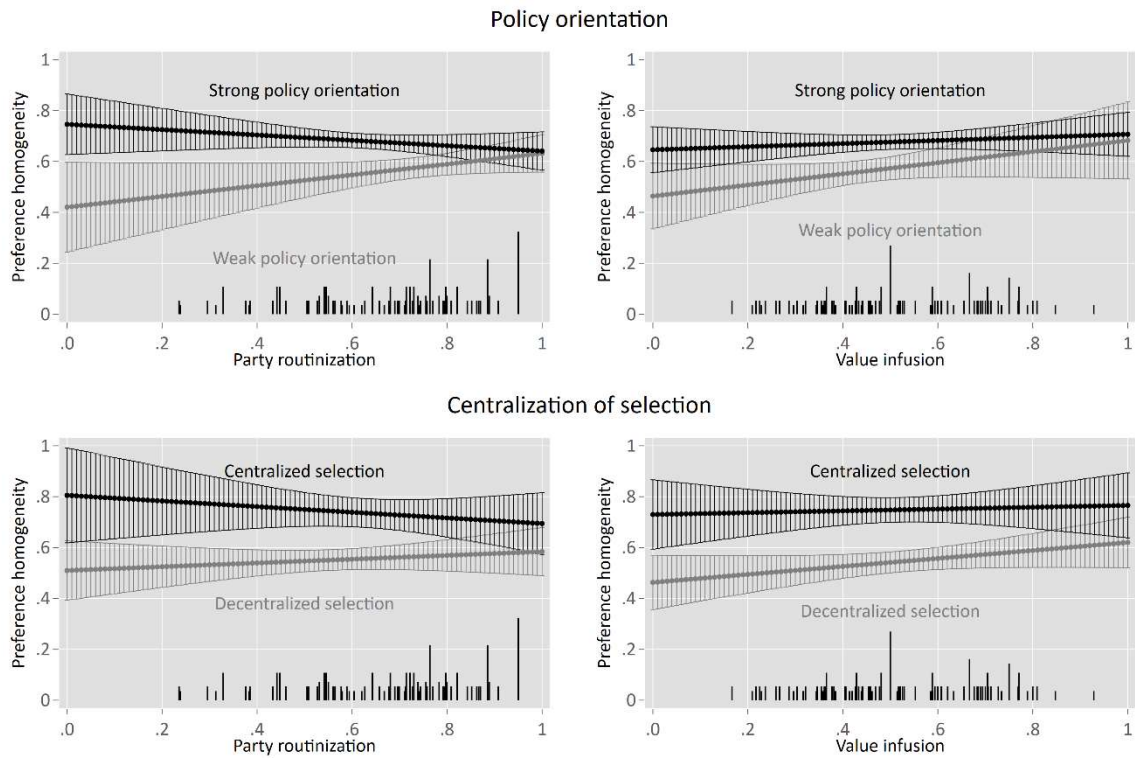
**Figure A8. Version of Figure 3 excluding candidates who thought they could not win from the computation of homogeneity and value infusion**



*Notes:* Predicted values for preference homogeneity with 83% confidence intervals. Non-overlapping 83% confidence intervals indicate that the predicted values are different with approximately  $p < 0.05$ . Histogram with observed variables for measures of institutionalization added.



**Figure A9. Version of Figure 4 excluding candidates who thought they could not win from the computation of homogeneity and value infusion**



*Notes:* Predicted values for preference homogeneity with 83% confidence intervals. Non-overlapping 83% confidence intervals indicate that the predicted values are different with approximately  $p < 0.05$ . Histogram with observed variables for measures of institutionalization added. Prediction made for 5th and 95th percentile of the moderator variable.

**Table A8. Raw party level data (main variables only)**

Election	Party	N candidates	Routinization	Value infusion	Homogeneity		
					Economic	Sociocultural	EU
Australia2007	Australian Greens	117	0.24	0.40	0.60	0.58	
Australia2007	Australian Labor Party (ALP)	86	0.53	0.74	0.68	0.40	
Australia2007	Liberal Party of Australia	66	0.53	0.57	0.53	0.62	
Australia2007	National Party of Australia	12	0.39	0.10	0.70	0.40	
Austria2008	BZOE	75	0.31	0.25		0.63	0.32
Austria2008	FPOE	155	0.64	0.30		0.74	0.34
Austria2008	Gruene	215	0.60	0.21		0.76	0.56
Austria2008	KPOE	63		0.28		0.76	0.38
Austria2008	OEVP	220	0.89	0.41		0.68	0.55
Austria2008	SPOE	170	0.89	0.47		0.74	0.53
Belgium2007	CD&V	51	0.76	0.61	0.58	0.86	0.63
Belgium2007	CDH	39	0.71	0.67	0.63	0.69	0.72
Belgium2007	ECOLO	50	0.68	0.74	0.63	0.80	0.62
Belgium2007	GROEN!	61	0.55	0.56	0.61	0.74	0.70
Belgium2007	LijstDedecker	41	0.30	0.32	0.37	0.68	0.36
Belgium2007	MR	48	0.73	0.53	0.62	0.73	0.60
Belgium2007	N-VA	15	0.44	0.50	0.61	0.96	0.50
Belgium2007	Open VLD	52	0.72	0.55	0.52	0.76	0.68
Belgium2007	PS	44	0.82	0.62	0.62	0.70	0.54
Belgium2007	sp.a/spirit	47	0.76	0.74	0.51	0.72	0.67
Belgium2007	VlaamsBelang	35	0.54	0.59	0.60	0.93	0.35
Belgium2010	CD&V	67	0.76	0.75	0.52	0.62	0.64
Belgium2010	CDH	39	0.71	0.42	0.53	0.66	0.52
Belgium2010	ECOLO	59	0.68	0.78	0.62	0.78	0.64
Belgium2010	GROEN!	70	0.55	0.66	0.62	0.63	0.65
Belgium2010	MR	47	0.73	0.47	0.64	0.59	0.61
Belgium2010	NVA	75	0.44	0.65	0.63	0.77	0.63
Belgium2010	PS	44	0.82	0.74	0.76	0.69	0.71

Belgium2010	SPA	54	0.76	0.70	0.61	0.68	0.66
Belgium2010	Vlaams Belang, VB	33	0.54	0.70	0.46	0.53	0.44
Belgium2010	VLD	60	0.72	0.59	0.57	0.74	0.65
CzechRepublic2006	CSSD	18	0.78		0.53		
CzechRepublic2006	KDU	70	0.83		0.56		
CzechRepublic2006	KSCM	18	0.80		0.57		
CzechRepublic2006	ODS	37	0.82		0.42		
CzechRepublic2006	SZ	24	0.44		0.32		
Denmark2011	Conservative People's Party	36	0.51	0.54	0.48	0.67	0.02
Denmark2011	Danish People's Party	42	0.43	0.70	0.57	0.55	0.78
Denmark2011	Liberal Alliance	36	0.24	0.50	0.41	0.56	0.32
Denmark2011	Liberals	40	0.56	0.50	0.57	0.62	0.48
Denmark2011	Red/Green Alliance	59	0.38	0.69	0.48	0.85	0.52
Denmark2011	Social Democrats	35	0.58	0.70	0.63	0.63	0.53
Denmark2011	Social Liberals	35	0.45	0.59	0.55	0.81	0.47
Denmark2011	Socialist People's Party	46	0.45	0.62	0.57	0.67	0.29
Finland2011	Center Party of Finland	86	0.79	0.28	0.62	0.60	0.37
Finland2011	Christian Democrats in Finland	81	0.51	0.36	0.53	0.65	0.21
Finland2011	Green League	88	0.56	0.34	0.69	0.63	0.60
Finland2011	National Coalition Party	63	0.74	0.41	0.49	0.46	0.71
Finland2011	Social democratic party	86	0.73	0.38	0.69	0.47	0.50
Finland2011	Swedish Peoples Party in Finland	42	0.53	0.42	0.49	0.68	0.75
Finland2011	The Finns Party	96	0.38	0.22	0.55	0.44	0.45
Finland2011	The Left Alliance	103	0.66	0.35	0.65	0.56	0.25
Germany2005	Bündnis90/Die Grünen	199	0.68		0.57		0.73
Germany2005	FDP	203	0.70		0.46		0.46
Germany2005	Linke.PDS	141	0.59		0.71		0.46
Germany2005	SPD	182	0.84		0.60		0.75
Germany2009	Bündnis 90/Die Grünen	159	0.68	0.25	0.52	0.76	0.70
Germany2009	CDU/CSU	176		0.28	0.48	0.46	0.57
Germany2009	Die Linke	147	0.59	0.35	0.76	0.64	0.40
Germany2009	FDP	149	0.70	0.28	0.45	0.43	0.53

Germany2009	SPD	158	0.84	0.40	0.59	0.59	0.65
Greece2007	New Democracy (ND)	95	0.95	0.63	0.57	0.64	0.53
Greece2007	PASOK	146	0.95	0.43	0.62	0.63	0.58
Greece2009	ND	106	0.95	0.47	0.58	0.71	0.58
Greece2009	PASOK	86	0.95	0.53	0.61	0.57	0.69
Greece2012	DIMAR	87		0.56	0.67	0.71	0.68
Greece2012	ND	67	0.95	0.59	0.69	0.55	0.58
Greece2012	PASOK	113	0.95	0.45	0.59	0.64	0.60
Greece2012	Syriza	65	0.79	0.39	0.73	0.72	0.23
Hungary2010	Fidesz	150	0.96	0.57			
Hungary2010	Jobbik	111		0.31			
Hungary2010	LMP	70		0.24			
Hungary2010	MSZP	53	0.97	0.63			
Iceland2009	Civic Movement	95		0.19	0.44	0.49	
Iceland2009	Independence Party	92		0.24	0.42	0.58	
Iceland2009	Left Green Movement	94		0.38	0.50	0.63	
Iceland2009	Progressive Party	85		0.35	0.44	0.63	
Iceland2009	Social Democratic Alliance	97		0.34	0.58	0.55	
Ireland2007	FF	42	0.87	0.79	0.60	0.51	0.70
Ireland2007	FG	38	0.85	0.63	0.48	0.74	0.70
Ireland2007	Greens	20	0.38	0.71	0.76	0.65	0.71
Ireland2007	Labour	30	0.53	0.68	0.76	0.51	0.75
Ireland2007	SF (Sinn Fein)	12	0.69	0.82	0.85	0.56	0.28
Italy2013	CENTRO DEMOCRATICO	36		0.32	0.62	0.62	0.55
Italy2013	FRATELLI D'ITALIA	31		0.34	0.46	0.49	0.30
Italy2013	IL POPOLO DELLA LIBERTA'	73		0.40	0.45	0.54	0.34
Italy2013	LEGA NORD	32	0.69	0.61	0.48	0.80	0.33
Italy2013	MOVIMENTO 5 STELLE BEPPEGRILLO.IT	135		0.39	0.63	0.59	0.42
Italy2013	PARTITO DEMOCRATICO	145	0.87	0.60	0.69	0.59	0.80
Italy2013	RIVOLUZIONE CIVILE	45		0.44	0.69	0.51	0.45
Italy2013	SCELTA CIVICA CON MONTI PER L'ITALIA	69		0.33	0.33	0.43	0.58
Italy2013	SINISTRA ECOLOGIA LIBERTA'	67		0.39	0.77	0.74	0.73

Italy2013	UNIONE DI CENTRO	36	0.63	0.25	0.39	0.63	0.47
Netherlands2006	CDA	32	0.76	0.84	0.71	0.61	0.62
Netherlands2006	D66	18	0.57	0.59	0.63	0.50	0.64
Netherlands2006	Groen Links	12	0.60	0.55	0.73	0.95	0.51
Netherlands2006	Pvd Dieren	13		0.65	0.31	0.63	0.07
Netherlands2006	PvdA	22	0.77	0.57	0.70	0.89	0.80
Netherlands2006	SGP	13		0.82	0.67	1.00	0.43
Netherlands2006	SP	25	0.71	0.83	0.82	0.81	0.50
Netherlands2006	VVD	26	0.71	0.54	0.60	0.55	0.51
Norway2009	Ap	150	0.74	0.86	0.56	0.62	
Norway2009	FrP	147	0.68	0.83	0.36	0.53	
Norway2009	Høyre	131	0.71	0.54	0.40	0.64	
Norway2009	KrF	140	0.62	0.63	0.55	0.55	
Norway2009	Sp	147	0.67	0.62	0.53	0.54	
Norway2009	SV	155	0.59	0.73	0.64	0.78	
Norway2009	V	136	0.58	0.53	0.54	0.60	
Portugal2009	BE	42	0.33	0.34	0.72	0.58	0.60
Portugal2009	CDS-PP	56	0.55	0.42	0.52	0.56	0.63
Portugal2009	PS	29	0.89	0.48	0.61	0.71	0.79
Portugal2009	PSD	50	0.89	0.41	0.56	0.54	0.75
Portugal2011	BE	52	0.33	0.30	0.66	0.61	0.46
Portugal2011	CDS-PP	62	0.55	0.38	0.43	0.56	0.46
Portugal2011	PS	45	0.89	0.34	0.75	0.71	0.66
Portugal2011	PSD	56	0.89	0.45	0.70	0.53	0.68
Romania2012	ARD	49		0.34			
Romania2012	PPDD	82		0.37			
Romania2012	UDMR	100	0.58	0.68			
Romania2012	USL	109		0.35			
Sweden2010	The Center Party	229	0.86	0.52	0.50	0.61	0.43
Sweden2010	The Christian Democrats	227	0.81	0.51	0.50	0.44	0.36
Sweden2010	The Conservatives	296	0.89	0.62	0.49	0.56	0.50
Sweden2010	The Green Party	236	0.76	0.41	0.62	0.62	0.17

Sweden2010	The Left Party	228	0.79	0.57	0.67	0.69	0.42
Sweden2010	The Liberal Party	172	0.81	0.42	0.54	0.61	0.60
Sweden2010	The Social Democrats	303	0.91	0.70	0.65	0.68	0.30
Sweden2010	The Sweden Democrats	27	0.46	0.72	0.52	0.57	0.77
Switzerland2007	CSP/PCS	22		0.35	0.50	0.56	
Switzerland2007	CVP/PDC	212	0.78	0.31	0.49	0.41	
Switzerland2007	EDU/UDF	82		0.44	0.42	0.75	
Switzerland2007	EVP/PEV	161		0.28	0.59	0.59	
Switzerland2007	FDP/PRD	235	0.80	0.34	0.31	0.50	
Switzerland2007	GLP	27		0.46	0.47	0.54	
Switzerland2007	GPS/PES	274	0.64	0.38	0.62	0.56	
Switzerland2007	Pda/PST	26		0.52	0.70	0.59	
Switzerland2007	SPS/PSS	280	0.74	0.47	0.66	0.59	
Switzerland2007	SVP/UDC	215	0.76	0.44	0.36	0.52	
Switzerland2011	BDP	83		0.23	0.39	0.50	
Switzerland2011	CSP/PCS	17		0.25	0.51	0.45	
Switzerland2011	CVP/PDC	178	0.78	0.24	0.44	0.35	
Switzerland2011	EVP/PEP	122		0.20	0.54	0.60	
Switzerland2011	FDP/PRD	190	0.80	0.32	0.29	0.46	
Switzerland2011	GLP/Vert'libéraux	121		0.26	0.43	0.57	
Switzerland2011	GPS/PES	214	0.64	0.37	0.63	0.58	
Switzerland2011	SP/PS	272	0.74	0.44	0.75	0.65	
Switzerland2011	SVP/UDC	150	0.76	0.36	0.28	0.54	
UK2013	Conservative Party	164	0.80	0.41	0.47	0.52	0.31
UK2013	Labour Party	242	0.80	0.47	0.64	0.66	0.48
UK2013	Liberal Democrats	319	0.70	0.32	0.57	0.58	0.60