

Dietary zinc supplementation of 3xTg-AD mice increases BDNF levels and prevents cognitive deficits as well as mitochondrial dysfunction

C Corona^{1,2}, F Masciopinto^{1,2}, E Silvestri³, A Del Viscovo³, R Lattanzio⁴, R La Sorda⁴, D Ciavardelli⁵, F Goglia³, M Piantelli⁴, LMT Canzoniero³ and SL Sensi^{1,2,6}

The overall effect of brain zinc (Zn^{2+}) in the progression and development of Alzheimer's disease (AD) is still not completely understood. Although an excess of Zn^{2+} can exacerbate the pathological features of AD, a deficit of Zn^{2+} intake has also been shown to increase the volume of amyloid plaques in AD transgenic mice. In this study, we investigated the effect of dietary Zn^{2+} supplementation (30 p.p.m.) in a transgenic mouse model of AD, the 3xTg-AD, that expresses both β amyloid ($A\beta$)- and tau-dependent pathology. We found that Zn^{2+} supplementation greatly delays hippocampal-dependent memory deficits and strongly reduces both $A\beta$ and tau pathology in the hippocampus. We also evaluated signs of mitochondrial dysfunction and found that Zn^{2+} supplementation prevents the age-dependent respiratory deficits we observed in untreated 3xTg-AD mice. Finally, we found that Zn^{2+} supplementation greatly increases the levels of brain-derived neurotrophic factor (BDNF) of treated 3xTg-AD mice. In summary, our data support the idea that controlling the brain Zn^{2+} homeostasis may be beneficial in the treatment of AD.

Cell Death and Disease (2010) 1, e91; doi:10.1038/cddis.2010.73; published online 28 October 2010

Subject Category: Neuroscience

Alzheimer's disease (AD) is the most common form of dementia and is characterized by the accumulation of amyloid- β peptide ($A\beta$) and the formation of neurofibrillary tangles made of hyperphosphorylated tau (h-tau). The pathogenic role of metal dyshomeostasis in AD has been largely debated in recent years.¹ $A\beta$ aggregation is, in fact, a process strongly potentiated by the peptide interaction with several metals and zinc (Zn^{2+}), in particular.² In addition, at high concentrations (250 μ M), Zn^{2+} has been shown to trigger tau phosphorylation as well as its fibrillization.^{3,4} However, the effect of Zn^{2+} on tau phosphorylation appears to be bimodal, as at a concentration of 100 μ M the cation induces tau dephosphorylation.³ Furthermore, Zn^{2+} protects cells by blocking ion fluxes through $A\beta$ -induced cation permeable channels⁵ or competes with Cu^{2+} in its binding to $A\beta$, thereby inhibiting amyloid plaque formation.⁶

Zn^{2+} is sequestered into the mitochondria^{7,8} and mitochondrial dysfunctions as well as energy deficiency are also prominent early events in AD.⁹ Furthermore, recent findings in a triple transgenic mouse model of AD indicate a synergistic interaction between $A\beta$ and h-tau in impairing the oxidative phosphorylation system (OXPHOS) as well as the production of reactive oxygen species.⁹ In that respect, we have also

previously shown the expression of pro-AD factors, such as mutant human presenilin-1 (PS1), amyloid precursor protein (APP) and human h-tau present in 3xTg-AD mice strongly alters intracellular Zn^{2+} homeostasis in cultured cortical neurons undergoing oxidative stress.¹⁰

Although it seems clear that alterations in the content of brain Zn^{2+} can have a pathogenic role in AD,^{2,11} there are still conflicting results about how the overall brain bioavailability of the cation can affect the disease progression. On one hand, several key studies have demonstrated that the use of Zn^{2+} -binding compounds such as clioquinol or PBT2 restore Zn^{2+} homeostasis, greatly reduces $A\beta$ pathology and protects against cognitive decline in transgenic AD models.^{12,13} On the other hand, a recent study, in an AD mouse model,¹⁴ has shown that dietary Zn^{2+} supplementation exacerbates cognitive deficits but surprisingly decreases amyloid deposits. Furthermore, Zn^{2+} depletion has been found to increase the volume of amyloid plaques¹⁵ and data obtained in transgenic mice genetically depleted of synaptic Zn^{2+} , ZnT3-KO mice, indicate that such depletion leads to an age-dependent decline of cognitive functions.¹⁶ Moreover, lactational zinc deficiency has been shown to promote apoptotic neuronal loss in the mouse hippocampus.¹⁷

¹Molecular Neurology Unit-Center of Excellence on Aging (Ce.S.I.), University 'G. d'Annunzio', Chieti-Pescara, Italy; ²Department of Neuroscience and Imaging, University 'G. d'Annunzio', Chieti-Pescara, Italy; ³Department of Biological and Environmental Science, University of Sannio, Benevento, Italy; ⁴Department of Oncology and Neuroscience, University 'G. d'Annunzio', Chieti-Pescara, Italy; ⁵Department of Biomedical Science, University 'G. d'Annunzio', Chieti-Pescara, Italy and ⁶Department of Neurology, University of California-Irvine, Irvine, CA, USA

*Corresponding author: SL Sensi, Molecular Neurology Unit, Center of Excellence on Aging, University G. d'Annunzio, Chieti e Pescara, Via Colle dell' Ara, Chieti Scalo, 66013, Chieti, Italy. Tel: + 39 0871 541544; Fax: + 39 0871 541542; E-mail: ssensi@uci.edu

Keywords: Alzheimer's disease; 3xTg-AD mouse; $A\beta$, tau; zinc; BDNF

Abbreviations: Zn^{2+} , Zinc; AD, Alzheimer's disease; $A\beta$, β amyloid; TrkB, tyrosine kinase receptor type B; BDNF, Brain-Derived Neurotrophic Factor; h-tau, hyperphosphorylated tau; OXPHOS, oxidative phosphorylation system; PS1, human presenilin-1; APP, Amyloid Precursor Protein; MMPs, matrix metalloproteinases; MWM, Morris Water Maze; NOR, Novel Object Recognition; BN-PAGE, Blue-Native Polyacrylamide gel electrophoresis; GSK-3 β , Glycogen synthase kinase-3- β ; NMDA, N-Methyl-D-Aspartate; GABA, γ -Aminobutyric acid

Received 11.8.10; revised 20.9.10; accepted 27.9.10; Edited by V De Laurenzi

Neurotrophic signaling pathways are also deregulated in AD.¹⁸ In particular, recent studies have shown that decrease levels of brain-derived neurotrophic factor (BDNF) correlate with the severity of AD-related cognitive impairment,¹⁹ suggesting that reduced BDNF availability may be an early cofactor involved in AD development. Interestingly, Zn^{2+} has been shown to be an important modulator of this pathway as the cation facilitates the maturation of BDNF from pro-BDNF through the activation of Zn^{2+} -dependent matrix metalloproteinases (MMPs).²⁰

In this study, we investigated the effect of dietary Zn^{2+} supplementation on the disease progression of the 3xTg-AD mouse, a transgenic animal model of AD that exhibits both $A\beta$ - and tau-dependent pathology. Zn^{2+} supplementation was started early on in male animals at 1 month of age (m.o.a.) testing the hypothesis that such early exposure to the cation can set in motion a better intraneuronal Zn^{2+} homeostasis and counteract the aging-related Zn^{2+} deregulation that has been associated with AD.² End points of the study were analysis of cognitive decline, the appearance of intraneuronal $A\beta$ and h-tau, AD-related mitochondrial dysfunctions, as well as disruption of the BDNF neurotrophic pathway.

Results

Dietary zinc supplementation counteracts the development of hippocampus-dependent cognitive deficits in 3xTg-AD mice. To evaluate the role of Zn^{2+} supplementation in 3xTg-AD mice, 1-month-old male animals ($n=9$) were treated with 30 p.p.m. of $ZnSO_4$ for 11–13 months. PS1-KI mice ($n=11$) that do not develop $A\beta$ or tau pathology nor show any cognitive deficits were used as control animals.²¹ At the end of the treatment, mice were assessed for both hippocampus- and cortex-dependent cognitive tasks. Mice were first studied for their performance on the morris water maze (MWM) test, a task that is highly dependent on the hippocampus, to investigate spatial memory functioning. At first, we assessed the integrity of the mice learning process and found no differences in task acquisition (data not shown), indicating that, during a 3-day period of training, all groups learned equally well how to find the submerged platform using intra- and extra-maze visible cues. After the last training trial, spatial reference memory probe trials were conducted at 1.5 and 24 h to examine short- and long-term memory, respectively. As previously reported,²¹ 3xTg-AD mice displayed no impairment in short-term memory, while they manifested long-term memory deficits as indicated by the statistically significant increase in the time spent to find the platform (control *versus* 3xTg-AD; ($P=0.010$)). We also observed (even though it was found to be not statistically significant, $P=0.083$), a trend toward decreased number of platform crosses (Figure 1a and b). Interestingly, Zn^{2+} treatment prevented the long-term memory decline in 3xTg-AD mice as indicated by key MWM parameters such as the latency to find the platform and the number of platform crosses that were basically identical to the ones shown by disease-free PS1-KI mice ((Figure 1a and b); 3xTg-AD *versus* 3xTg-AD + Zn^{2+} ,

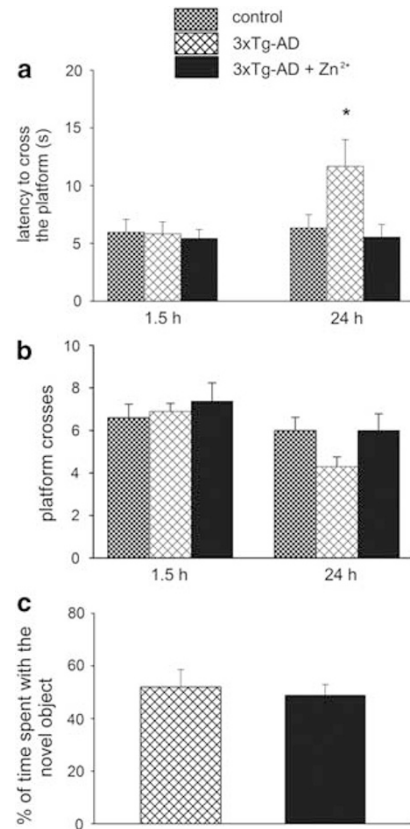


Figure 1 Zn^{2+} supplementation prevents the development of hippocampus-dependent memory deficits in 3xTg-AD mice. Male 3xTg-AD mice were treated with either water containing 30 p.p.m. of $ZnSO_4$ ($n=9$) or tap water ($n=11$) for 11–13 months and tested for the spatial memory version of the MWM. (a and b) Mice were given a memory probe trial wherein, the platform was removed 1.5 and 24 h after the last training trial. Compared with untreated 3xTg-AD mice, Zn^{2+} -fed 3xTg-AD mice do not show any significant difference in their MWM performance at 1.5 h. (a) When tested at 24 h, mice exhibit a marked decrease in the time (latency) they employed to reach the point where the platform used to be. (b) Zn^{2+} -treated 3xTg-AD mice make also more platform crosses, even though such parameter does not reach statistical significance. (c) Zn^{2+} treatment does not affect the performance of the cortex-dependent novel object recognition test as treated and untreated 3xTg-AD mice show no differences in their ability to remember an object to which they were exposed 24 h before. Error bars indicate mean values \pm S.E.M.; * $P<0.05$

$P=0.011$). We next evaluated the effect of Zn^{2+} supplementation on the novel object recognition (NOR) test, a cortex-dependent contextual task which relies on the animal preference to explore a novel object over a familiar object.^{22–24} Analysis of the NOR performance showed no differences between treated and untreated 3xTg-AD mice (Figure 1c; ($P=0.669$)) indicating that the beneficial effects of Zn^{2+} were region-specific and restricted to the hippocampus.

Zinc supplementation reduces intraneuronal $A\beta$ and tau pathology in the hippocampus of 3xTg-AD mice. After the cognitive evaluation, mice were killed and neuropathology assessed to elucidate the underlying mechanisms by which Zn^{2+} feeding had improved cognition. 3xTg-AD mice develop a progressive intraneuronal $A\beta$ accumulation in AD-relevant

regions such as the cerebral cortex and the hippocampus starting at 4 m.o.a.²⁵ To determine whether Zn²⁺ supplementation can decrease the brain A β load, immunohistochemistry was performed with the anti-A β DE2B4 primary antibody and results of this assay show a significant decrease in the hippocampus (Figure 2a–e; ($P=0.013$)), but not in the cortex of treated 3xTg-AD mice (see supplementary Figure 1a and b), a finding that matches their behavioral performance.

At about 12 m.o.a., 3xTg-AD mice also show extensive neurofibrillary tangles, first in the hippocampus (in particular within pyramidal neurons of the CA1 subfield) and then in the cortex.²⁵ To investigate the effect of our Zn²⁺ treatment on the development of tau pathology, we employed an anti-tau AT180 primary antibody that specifically detects tau phosphorylation at the thr231/ser235 site. As expected, we found diffuse h-tau immunoreactivity in the CA1 subfield and cortex of untreated 3xTg-AD mice (Figure 2f and g). Interestingly, Zn²⁺ treatment produced a marked decrease of h-tau immunoreactivity in the 3xTg-AD CA1 subfield (Figure 2h–j;

($P=0.010$)) but not in the cortex (see supplementary Figure 1c and d), further indicating that Zn²⁺ supplementation has a potent region-specific effect on tau pathology.

Zinc supplementation restores mitochondrial function in 3xTg-AD mice. Mitochondrial dysfunctions have a pivotal role in AD⁹ and a previous study in 3xTg-AD mice has shown that such deficits are developed at early stages and precede the manifestation of amyloid- and tau-dependent pathology.²⁶ To investigate the effect of our Zn²⁺ treatment on AD-related mitochondrial deficits, we investigated the activity of mitochondrial complexes by employing a combination of blue-native polyacrylamide gel electrophoresis (BN-PAGE) and subsequent histochemical in-gel staining. As first, to evaluate a potential age-dependent decline in mitochondrial respiration, we studied the activity of mitochondrial complexes I, II and IV obtained from homogenates of the cortex, hippocampus and cerebellum of 3xTg-AD mice at 2, 6 and 12–14 m.o.a. These activities were compared with age-matched PS1-KI mice. In the case

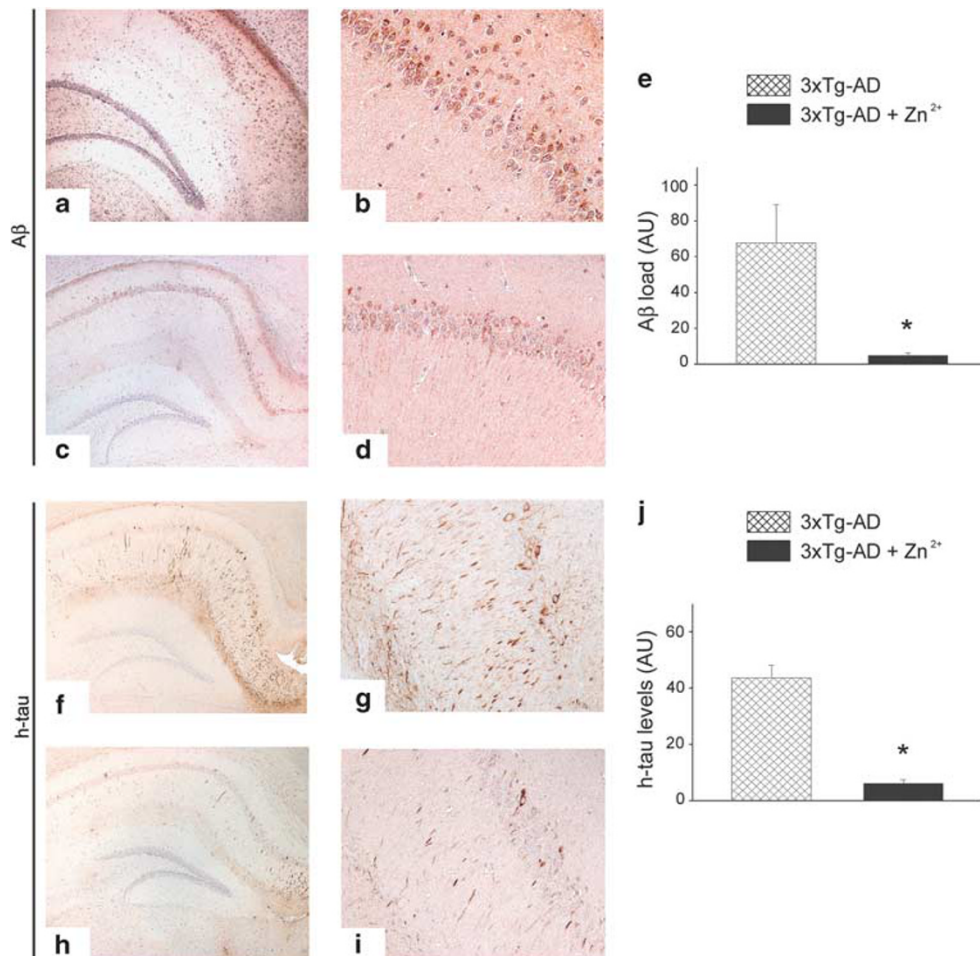


Figure 2 Zn²⁺ supplementation reduces both A β and tau pathology in the hippocampus of 3xTg-AD mice. Immunohistochemistry with specific antibodies was employed to detect deposits of intraneuronal A β (a–d) and h-tau (f–j) in brain slices from treated and untreated 3xTg-AD mice (left column: 20 \times magnification; right column: 40 \times magnification). Compared with untreated mice (a and b), DAB staining shows a significant decrease of intraneuronal A β deposits in the hippocampus of treated 3xTg-AD mice (c and d). (b and d) 40 \times magnification of the hippocampal CA1 area as shown in the rectangle. (e) Quantification of A β load as shown in a and c. Compared with untreated mice (f, g), DAB staining shows a strong decrease of intraneuronal h-tau immunoreactivity in the hippocampus of Zn²⁺-fed 3xTg-AD mice (h and i). (g and i) 40 \times magnification of the CA1 area as shown in the rectangle. (j) Quantification of h-tau levels from f and h. Error bars indicate mean values \pm S.E.M.; * $P < 0.05$

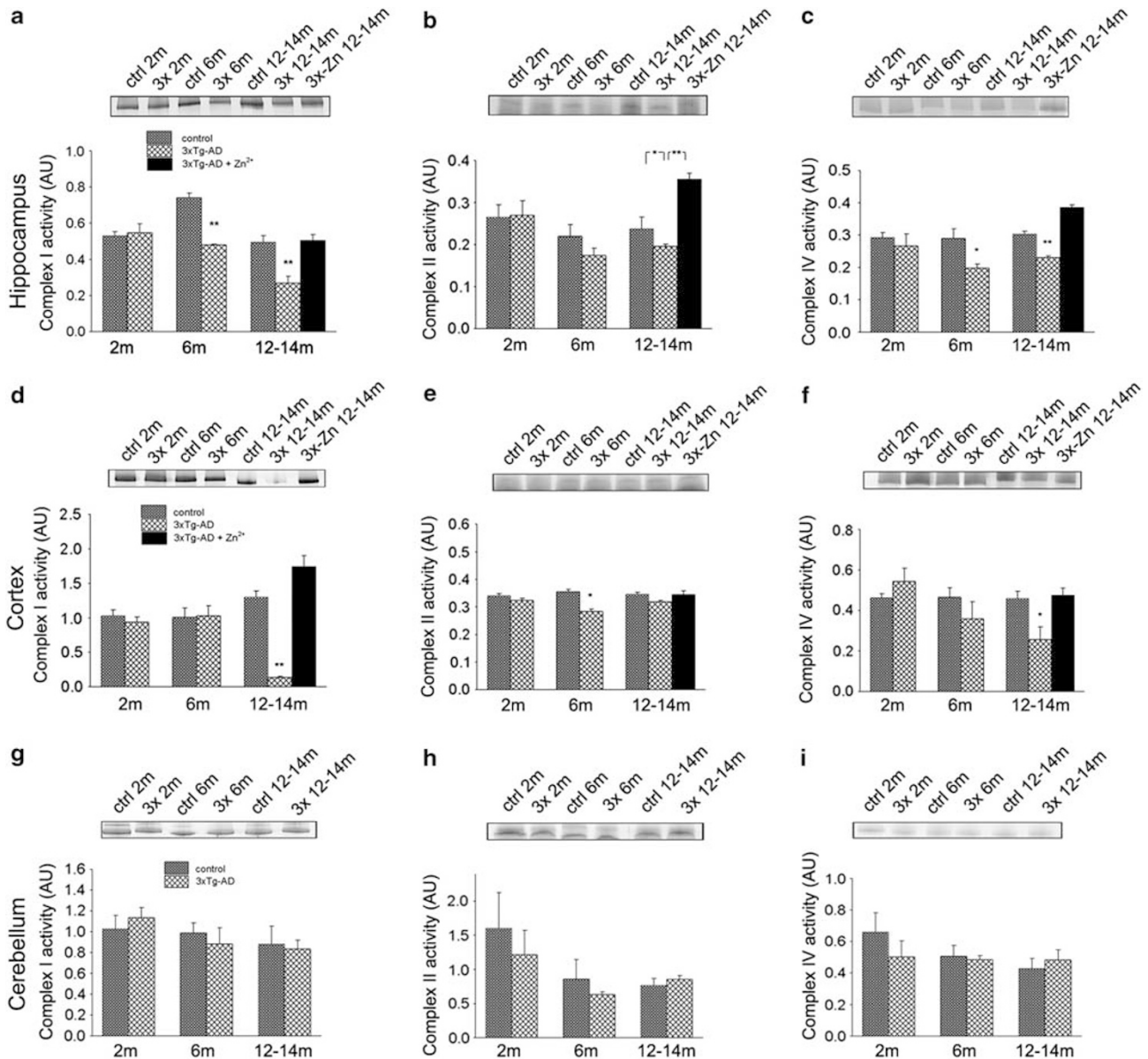


Figure 3 Zn^{2+} supplementation rescues AD-related mitochondria deficits in 3xTg-AD mice. BN-PAGE was employed to assess the activity of mitochondrial complexes I (a, d and g), II (b, e and h) and IV (c, f and i) in isolated mitochondria obtained from the hippocampus (a–c), cerebral cortex (d–f), or the cerebellum (g–i) of treated and untreated 3xTg-AD, as well as control mice at 2, 6 and 12–14 m.o.a. When compared with age-matched untreated mice, functioning of mitochondrial complexes I and IV appears to be decreased in the hippocampus of untreated 6-month-old 3xTg-AD mice (a and c). The same deficits are found in hippocampal mitochondria of 3xTg-AD mice at 12–14 m.o.a.; however, Zn^{2+} supplementation completely counteracts the development of these deficits (a–c). When comparing complex activities of cortical mitochondria obtained from 6-month-old 3xTg-AD versus age-matched control mice, complexes I and IV are found not compromised (d–f) while a statistically significant deficit is observed in the case of complex II (e). Still in the cortex, complexes I and IV functioning is greatly compromised in untreated 3xTg-AD mice at 12–14 m.o.a. and Zn^{2+} treatment is able to completely rescue the deficits (d–f). No changes are found in the cerebellum of 3xTg-AD mice compared with age-matched controls (g–i). * $P < 0.05$; ** $P < 0.01$. Error bars indicate mean values \pm S.E.M.

of experiments with mice at 2 and 6 m.o.a., we employed a pool of three–five animals for each age group and each genotype. We then compared the activities of these mitochondrial complexes in treated and untreated 3xTg-AD mice at 12–14 m.o.a.

Hippocampus. When comparing 3xTg-AD with control mice, we confirmed the impairment in mitochondrial function

described by Yao *et al.*²⁶ and found an age-dependent decay in the activity of mitochondrial complexes I and IV starting at 6 m.o.a. (Figure 3a–c; (control versus 3xTg-AD: Complex I, $P = 0.010$; Complex II, $P = 0.048$; Complex IV, $P < 0.01$)). Changes in enzyme activities were not dependent on changes in protein expression (data not shown). Zn^{2+} -supplemented 3xTg-AD mice at 12–14 m.o.a. showed a complete recovery of all these defective respiratory

complexes (Figure 3a–c; (3xTg-AD *versus* 3xTg-AD + Zn²⁺: Complex I, $P=0.008$; Complex II, $P=0.001$; Complex IV, $P\ll 0.01$)).

Cortex. In contrast to what was found in the hippocampus, compared with control mice 3xTg-AD animals showed no deficits at 2 and 6 m.o.a., except for the complex II at 6 m.o.a. ($P=0.005$). Moreover, activities of complexes I and IV were also dramatically reduced at 14 m.o.a. (control *versus* 3xTg-AD: Complex I, $P\ll 0.01$; Complex IV, $P=0.047$). Notably, Zn²⁺-supplemented 3xTg-AD mice at 12–14 m.o.a. showed a complete recovery in the activity of both complexes I and IV (Figure 3d–f; (3xTg-AD *versus* 3xTg-AD + Zn²⁺: Complex I, $P\ll 0.01$; Complex IV, $P=0.045$)).

Cerebellum. To test whether the mitochondrial deficits observed in the cortex and hippocampus were due to AD-related mechanisms triggered by the expression of mutant APP, PS1 and h-tau, we also analyzed the activity of complexes I, II and IV in the cerebellum, a region that shows no A β - or tau-dependent pathology and is not affected by AD. As expected, mitochondrial respiratory activities of all the complexes showed a not statistically significant age-dependent decline in 3xTg-AD mice, compared with control mice (Figure 3g–i).

Dietary zinc supplementation increases BDNF levels in 3xTg-AD brains through MMPs activation. BDNF signaling pathway is downregulated in AD,¹⁸ and Zn²⁺ has been described to potently stimulate the maturation of BDNF from inactive pro-BDNF via MMP activation.²⁰ We hence employed gelatine zymography assay in order to investigate the effect of Zn²⁺ supplementation on the activation of gelatine-degrading MMP-2 and MMP-9 in treated and untreated 3xTg-AD mice brains. As shown in Figure 4a, Zn²⁺ treatment potently increased both MMP-2 and MMP-9 activity compared with untreated 3xTg-AD mice ($P=0.004$ and $P=0.001$, respectively). Finally, we evaluated the effect of Zn²⁺ supplementation on cerebral BDNF levels by performing immunoblotting assay on treated and untreated

3xTg-AD brains. As shown in Figure 4b, Zn²⁺ supplementation induced a fourfold increase in BDNF brain levels ($P=0.022$).

Discussion

Although intraneuronal (Zn²⁺) rises are toxic, Zn²⁺ is required for many physiological cell functions.² Zn²⁺ is an essential nutritional factor and its deficiency may have important pathological consequences.²⁷ In that respect, recent reports have estimated that more than 25% of the world population is at risk of Zn²⁺ deficiency.^{28,29} In the context of AD, however, studies on Zn²⁺ deficiency or supplementation in AD models have provided conflicting results.^{14,15,30} Here, we show that dietary Zn²⁺ supplementation prevents hippocampal-dependent cognitive deficits, reduces both intraneuronal A β and tau pathology, prevents mitochondrial deficits and restores BDNF levels in a mouse model of AD.

Furthermore, as the gender difference has an important role in the pathology progression as well as in the Zn²⁺ homeostasis of AD mice,^{31,32} we decided to test our treatment in male 3xTg-AD and PS1-K1 mice in order to avoid any confounding effect driven by female hormones.

In the last years, several lines of evidence indicate that the accumulation of A β in the intraneuronal compartment, more than the extracellular space, is crucial in promoting the amyloid pathogenic effects.³³ Our mouse model exhibits an intraneuronal A β accumulation in the hippocampus and cortex that correlates with synaptic and LTP dysfunctions as well as with the development of memory deficits.^{21,34} Here we show that Zn²⁺ supplementation in 3xTg-AD mice strongly reduces the intraneuronal A β deposition in the hippocampus but not in the cerebral cortex.

Furthermore, recent observations describe a dose-dependent bimodal action exerted by the cation on tau phosphorylation and conformation.³ High Zn²⁺ concentrations (250 μ M) induce increased tau phosphorylation via glycogen synthase kinase-3 β activation, while low-Zn²⁺ concentrations ($\sim 100 \mu$ M) promotes tau dephosphorylation of the PHF-1

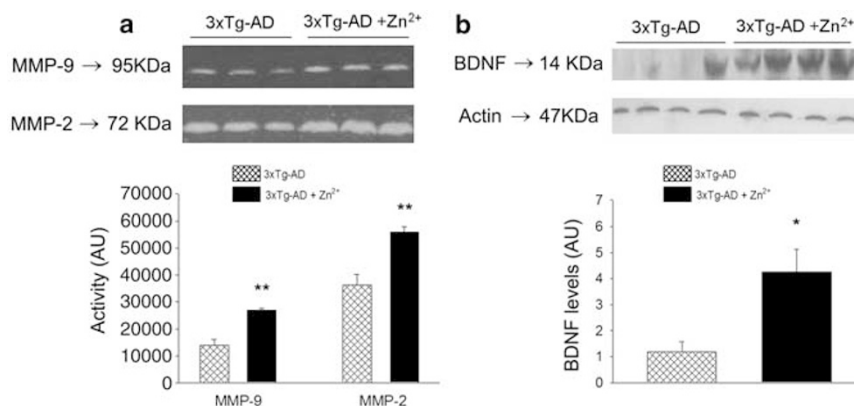


Figure 4 Zn²⁺ supplementation promotes MMPs activation and increases BDNF levels in 3xTg-AD mice. (a) Gelatine zymography indicates that Zn²⁺ treatment induces a significant increase of MMP-2 and MMP-9 activation in 3xTg-AD mice brains. (b) BDNF immunoblotting reveals that Zn²⁺-treated 3xTg-AD mice show a fourfold increase in BDNF levels when compared with untreated animals. * $P<0.05$; ** $P<0.01$. Error bars indicate mean values \pm S.E.M.

epitope. Our data strongly support this line of evidence as we find that 30 p.p.m. (equivalent to 460 μM) of Zn^{2+} induces a significant reduction of tau phosphorylation at the thr231/ser235 site of CA1 hippocampal pyramidal neurons. The fact that the Zn^{2+} concentration we used to feed our animals is higher than 250 μM , but still able to reduce the hippocampal tau pathology might be explained by the filtering activity of the blood brain barrier that makes the final Zn^{2+} concentration in the brain parenchyma likely comparable to the 'low' Zn^{2+} levels employed in culture studies.

Complementary to such region-specific decrease of both $A\beta$ and tau-dependent pathology, our treatment also completely prevents hippocampus-dependent spatial memory deficits while not affecting a cortex-dependent cognitive test. Although the mechanisms producing these regional differences are unknown, one possible explanation may be associated with a distinct difference between the hippocampus and the cortex in $A\beta$ and h-tau load.

Our results are not in accordance with what was reported by Linkous *et al.*¹⁴ as they found decreased amyloid plaque deposition, but increased cognitive deficits in Zn^{2+} -fed Tg2576 and TgCRND8 mice. One possible explanation for such discrepancy can be related to the difference in the animal models employed in the two studies. The 3xTg-AD mice manifest signs of $A\beta$ and tau pathology and cognitive deficits that are highly dependent on the intraneuronal deposition of $A\beta^{21}$ whereas the mice used by Linkous *et al.* show memory deficits mainly dependent on extracellular amyloid overload. The different pathogenic weight of extracellular *versus* intracellular amyloid deposition as well as the injurious interaction between amyloid and tau present in the 3xTg-AD model but not in Tg2576 and TgCRND8 mice, may likely explain the divergent effects we report.

Energy deficiency and mitochondrial dysfunctions are linked to AD, and recent findings describe the synergistic interaction between $A\beta$ and tau in promoting OXPHOS impairment in AD mice.⁹ In line with these findings, we find a significant decay in the activity of mitochondrial complexes I, II and IV in the hippocampus and of complexes I and IV in the cerebral cortex of aging 3xTg-AD mice, although no changes are found in their cerebellum. Notably, all the mitochondrial deficits are prevented by Zn^{2+} supplementation.

Tau has been shown to specifically impair mitochondrial complex I activity.⁹ Here we show that complex I functioning is reduced in the hippocampus of aging 3xTg-AD mice and Zn^{2+} rescues the complex activity in parallel with a dramatic decrease in h-tau hippocampal immunoreactivity. In the cerebral cortex, complex I activity shows a dramatic decrease and such deficit is prevented by Zn^{2+} even though cortical tau immunoreactivity is not changed, thereby suggesting that additional region-specific factors are playing a role in promoting mitochondrial dysfunction in our model. Complex II activity shows a significant reduction in the hippocampus while it appears to be unchanged in cortical areas, with the exception of animals at 6 m.o.a. Finally, we observe a decrease in the activity of mitochondrial complex IV in the hippocampus and cortex, a phenomenon that has been previously shown to be deregulated by both $A\beta$ and tau in AD models.⁹ Our data confirm these findings as we show that the strong $A\beta$ and tau immunoreactivity we observed in these

areas goes along with a great decay of complex IV activity. Notably, Zn^{2+} -treated 3xTg-AD mice show a complete recovery of mitochondrial complex IV activity in both the hippocampus and cerebral cortex. Taken together, our cortical data seem to indicate that mitochondria dysfunctions have a partial role in promoting AD-related cognitive deficits, as simply restoring the activity of OXPHOS complexes is *per se* not sufficient to induce a significant amelioration of cognitive functions.

One possible mechanism by which Zn^{2+} is beneficial in our AD model is offered by its modulation of the BDNF-tyrosine kinase receptor type B (TrkB) receptor pathway. BDNF is produced as a biologically inactive form (pro-BDNF) but once converted to mature BDNF, has a pivotal role not only in neuronal survival and differentiation, but also in maintaining synaptic structure, function and plasticity.³⁵ Altered BDNF signaling has been shown to be involved in several neurodegenerative disorders including AD.³⁶ Zn^{2+} induces BDNF maturation from pro-BDNF through MMPs activation and also transactivates synaptic TrkB by promoting Src family kinase activity.³⁷ In our study, we find a strong decrease of BDNF levels in aging 3xTg-AD mice compared with age-matched control mice (data not shown). Interestingly, Zn^{2+} supplementation induces a strong potentiation of MMP-2 and MMP-9 activity that leads to a fourfold increase of BDNF levels. Our results parallel findings of a study that employed ZnT3-KO mice that lack synaptic Zn^{2+} , show signs of cognitive impairment and have decreased BDNF and TrkB levels.¹⁶ Indeed, the fact that Zn^{2+} supplementation is beneficial in rescuing hippocampal dysfunctions seems to further substantiate the pivotal role played by synaptic Zn^{2+} in shaping the physiological neurotransmission of this crucial brain region. The cation can critically modulate long-term potentiation and depression by interfering with the functioning of *N*-methyl-D-aspartate and γ -aminobutyric acid receptors and recent findings also indicate that Zn^{2+} can act on the ZnR, a post-synaptic metabotropic Zn^{2+} -sensing receptor, which activates MAPK and CAMK2 and ultimately affects synaptic plasticity.^{2,38} Finally, as MMPs have a role in degrading $A\beta$,^{39,40} we can speculate that the Zn^{2+} -triggered increase of MMP activity might also exert a critical neuro-protective effect by potentiating the clearance of intraneuronal amyloid deposits.

In summary, our data lend support to the hypothesis that a fine-tuning of brain Zn^{2+} homeostasis may be beneficial in the treatment of AD.

Materials and Methods

Animals and treatment paradigm. Procedures involving animals and their care were conducted in conformity with the institutional guidelines that are in compliance with national (D.L. n. 116, G.U., suppl. 40, 18 February 1992) and international laws and policies. All efforts were made to minimize the number of animals used and their suffering. Transgenic mice were generated by Oddo *et al.*³⁴ and generously provided by Frank Laferla. Tap water containing zinc sulfate (ZnSO_4) was fed to 1-month-old male 3xTg-AD mice ($n=9$) for a period of 11–13 months. Age-matched untreated 3xTg-AD ($n=9$) or PS1-K1 ($n=11$) mice were considered controls and fed with tap water. For the Zn^{2+} treatment, 132 mg/l of ZnSO_4 were added to tap water to reach a final concentration of 30 mg/l of Zn^{2+} (30 p.p.m.). The stability of the Zn^{2+} -enriched solution was verified by inductively coupled plasma mass spectrometry.

Cognitive tasks

MWM. The MWM apparatus consisted of a circular plastic tank (1.3 m diameter) filled with water. The maze was located in a room containing several intra and extra-maze visual cues. A visible platform was employed at the beginning of the MWM test to make sure animals had no vision deficits. Mice were then trained to swim in the tank and climb on a (12x13 cm) rectangular platform submerged 2 cm beneath the surface of the water. No differences in the swimming speed were observed between groups. To reduce the stress related to the task, mice were placed on the platform 10 s before the beginning of the first training session. If a mouse failed to find the platform within 90 s, it was manually guided to the platform and allowed to remain there for 10 s. Mice were placed, between trials, back into a holding cage under a warming fan for 20 min. Mice were given four trials per day for 3 consecutive days. Retention of the spatial memory task was assessed at 1.5 and 24 h after the end of the last training trial. Both probe trials consisted of a 60 s free swim in the pool without the platform. The parameters measured during the probe trial included: (1) the time (latency) spent to reach and cross the platform location and (2) the number of crosses over the platform location. Mice were tested at 12–14 m.o.a. and killed immediately after completion of the test.

NOR. Two plexiglass (30 × 15 cm) cages were used for the whole experiment. In the habituation phase, mice, one per cage, were placed for 15 min per day for 2 consecutive days in empty cages. On day 3, the mouse was placed in a cage containing two identical objects spaced ~ 15 cm apart and allowed to explore the objects for 8 min before returning to the home cage. To rule out innate preferences, all the objects (made of plastic and of 5–6 cm in height) were tested on mice that were not part of the study. Objects were washed thoroughly with 70% ethanol before each trial. On day 4, the mouse was returned to the experimental cage containing the object to which it was previously exposed (familiar object), as well as a new object (novel object) positioned as the day before. Mice were then allowed to explore familiar and novel objects during a 5 min-probe test that was videotaped for subsequent analysis. Scoring of the NOR performance was based on the time spent to explore both familiar and novel objects. The behavior of the mouse was considered explorative (i.e. exploration) when the animal head was within 1 cm from the object with the neck extended and vibrissae moving. Simple proximity, chewing, or standing on the object did not count as exploration. Novel object exploration was calculated, as percentage, applying the following formula: $[A/(A + B)] \times 100$, where *A* is the time spent to explore the novel object and *B* is the time spent on the familiar one. As with the MWM test, mice were tested at 12–14 m.o.a. and killed immediately after completion of the test.

Brain tissue preparation. Mice were killed by carbon dioxide inhalation, and brains rapidly taken after removal of cerebellum and sagittally halved. One hemisphere and the cerebellum were frozen in liquid nitrogen and stored at –80 °C until use for further western blotting analysis, the other hemisphere was included for 24–36 h at room temperature (RT) in Carnoy fixative solution (65% ethanol and 35% chloroform) and eventually processed for immunohistochemistry. In the case of BN-PAGE analysis, brains were quickly dissected on ice and the cerebellum, cortex and hippocampus immediately frozen on dry ice and stored at –80 °C.

Immunoblotting. Tissue samples were homogenized in an ice-cold lysis buffer (50 mM Tris-HCl, pH 8, 150 mM NaCl, 0.1% SDS, 0.5 mM sodium orthovanadate, 1 mM sodium fluoride and 1% Triton X-100) supplemented with a cocktail of protease and phosphatase inhibitors (Sigma-Aldrich, St Louis, MO, USA). The homogenates were briefly sonicated and then centrifuged at 4 °C for 30 min at 14 000 r.p.m. The supernatant was used for immunoblot analysis. Protein concentration was determined using the Bradford method (Bio-Rad, Hercules, CA, USA). In all, 60–80 µg of proteins was resolved by SDS-PAGE (8–12% Bis-Tris from Sigma-Aldrich) under reducing conditions and transferred to a nitrocellulose membrane. The membrane was incubated in Tris-buffered saline and Tween 20 (TBST) containing 5% of nonfat dry milk for 1 h at 20 °C. After an overnight incubation at 4 °C in TBST with the primary antibody, blots were washed for 30 min, incubated for an additional hour at 20 °C with the secondary antibody and finally developed using the ECL PLUS (GE Healthcare, Little Chalfont, UK) chemiluminescence system. Bands were quantified by densitometry using NIH- Image J 1.61 (public domain software).

Antibodies. The following antibodies were used: anti-A β , clone DE2B4, diluted 1 : 400 (Abcam, Cambridge, MA, USA); anti-phosphoTau AT180 1 : 400 (Pierce, Rockford, IL, USA); anti- β -actin 1 : 10 000 (Sigma-Aldrich) and anti-BDNF, 1 : 1000 (Cell Signaling, Beverly, MA, USA). Secondary ECL antibodies both anti-mouse and anti-rabbit (GE Healthcare) peroxidase linked were also used.

Immunohistochemistry. Carnoy-fixed and paraffin embedded brains were sagittally sectioned (*n* = 5 per group). Sections were not pretreated with formic acid. Antigen retrieval was performed by microwave treatment at 750 W for 10 min in a 10 mmol/l sodium citrate buffer (pH 6.0). After blocking the endogenous mouse IgG antibodies (Biocare Medical, Concord, CA, USA), sections were incubated overnight with the primary antibody. Slices were then incubated with the secondary anti-mouse (HRP-polymer EnVision kit, Dako, Glostrup, Denmark), counterstained with Mayer's hematoxylin and the reaction visualized using diaminobenzidine as chromogen. Images of h-tau and A β stained sections were acquired using a 100 × (for A β) or 200 × (for h-tau) magnifications with a Leica DMR microscope (Leica Microsystems GmbH, Wetzlar, Germany) equipped with a DMR 500 digital camera (Leica). The number of stained pyramidal neurons and neurofibrillary tangles was measured using Photoshop 8.0 (Adobe Systems Incorporated, San Jose, CA, USA) by using the Photoshop Lasso Tool and pixel numbers obtained from the resulting histogram. After this first step, we used the Magic Wand tool to select a representative positive cell signal. All the immunostained cells were automatically selected and the total pixel number recorded. Pixel counts were normalized to a hippocampal area of 1 mm.²

BN-PAGE on mitochondrial samples. After solubilization of mitochondrial membranes by dodecyl maltoside, 20 µg of each sample was loaded on a 6–13% gradient acrylamide gel and subjected to electrophoresis on ice. For each set of gels, one gel was stained with Coomassie blue and the second one used to determine enzymatic activities. Complex I (NADH-dehydrogenase) activity was determined by incubating the gel with 0.1 M Tris-HCl, 768 mM glycine, 0.1 mM β -NADH and 0.04% nitro blue tetrazolium at pH 7.4 and RT. As an index of complex II activity, we evaluated succinate dehydrogenase activity incubating the gel in 0.1 M Tris-HCl, 100 mM glycine, 10 mM succinic acid and 1 mg/ml NTB at pH 7.4 and RT. Complex IV (COX) activity was estimated by incubating BN-PAGE gels with 5 mg 3,3'-diaminobenzidine tetrahydrochloride (DAB) dissolved in 9 ml phosphate buffer (0.05 M, pH 7.4), 1 ml catalase (20 µg/ml), 10 mg cytochrome C and 750 mg sucrose.

Violet-colored complex I and II bands and red-stained complex IV were measured using the Bio-Rad Imaging Densitometer (GS-800, Bio-Rad). Band intensities were expressed as absolute values in arbitrary units. The optical density (OD) of each band was plotted against the OD value derived from the Coomassie blue gel.

Gelatin zymography. SDS-PAGE gels (7.5%) were prepared with 0.1% gelatin incorporated during polymerization. In all, 50 µg of proteins was loaded on gel lanes and finally subjected to electrophoresis on ice at 40 mA constant in non-denaturing conditions. After electrophoresis, SDS was removed from gels by washing twice with a renaturing buffer (50 mM Tris-HCl, pH 7.4, and 2.5% Triton X-100) for 20 min each. Gels were then incubated overnight at 37 °C in an activation buffer (50 mM Tris-HCl, pH 7.4, 120 mM NaCl, 5 mM CaCl and 0.04% Na₂S₂O₈). Following the incubation, gels were stained for 30 min with 0.1% Coomassie blue (dissolved with 40% methanol and 10% acetic acid) and destained in the same solution without Coomassie until clear proteolytic bands appeared on the contrasting blue background. Bands were quantified by densitometry using NIH- Image J 1.61.

Statistics. For western blotting experiments, immunohistochemistry and novel object recognition test, statistical differences were determined with the Student's *t*-test for unpaired data. For analysis of the MWM latencies and BN-PAGE experiments, the homogeneity of the variances was determined by the Bartlett test (90% confidence level) and a one-way ANOVA was performed followed by a post-hoc Bonferroni's correction. All data are expressed as mean \pm S.E.M. Analysis of the MWM crosses number employed the non-parametric Kruskal–Wallis test and the threshold for statistically significant differences was set at *P* < 0.05.

Conflict of interest

The authors declare no conflict of interest.

Acknowledgements. We are in debt to Valerio Frazzini and Mary Evangeline Oberschlake for the critical revision and editing of the manuscript. SLS is supported by funds from the Italian Dept. of Education (FIRB 2003; PRIN 2006; PRIN 2008).

1. Zatta P, Drago D, Bolognin S, Sensi SL. Alzheimer's disease, metal ions and metal homeostatic therapy. *Trends Pharmacol Sci* 2009; **30**: 346–355.
2. Sensi SL, Paoletti P, Bush AI, Sekler I. Zinc in the physiology and pathology of the CNS. *Nat Rev Neurosci* 2009; **10**: 780–791.
3. Boom A, Autheliet M, Dedecker R, Frederick C, Van Heurck R, Daubie V *et al*. Bimodal modulation of tau protein phosphorylation and conformation by extracellular Zn²⁺ in human-tau transfected cells. *Biochim Biophys Acta* 2009; **1793**: 1058–1067.
4. Mo ZY, Zhu YZ, Zhu HL, Fan JB, Chen J, Liang Y. Low micromolar zinc accelerates the fibrillization of human tau via bridging of Cys-291 and Cys-322. *J Biol Chem* 2009; **284**: 34648–34657.
5. Arispe N, Pollard HB, Rojas E. Zn²⁺ interaction with Alzheimer amyloid beta protein calcium channels. *Proc Natl Acad Sci USA* 1996; **93**: 1710–1715.
6. Cuajungco MP, Faget KY. Zinc takes the center stage: its paradoxical role in Alzheimer's disease. *Brain Res Brain Res Rev* 2003; **41**: 44–56.
7. Dineley KE, Richards LL, Votyakova TV, Reynolds IJ. Zinc causes loss of membrane potential and elevates reactive oxygen species in rat brain mitochondria. *Mitochondrion* 2005; **5**: 55–65.
8. Sensi SL, Yin HZ, Weiss JH. AMPA/kainate receptor-triggered Zn²⁺ entry into cortical neurons induces mitochondrial Zn²⁺ uptake and persistent mitochondrial dysfunction. *Eur J Neurosci* 2000; **12**: 3813–3818.
9. Rhein V, Song X, Wiesner A, Ittner LM, Baysang G, Meier F *et al*. Amyloid-beta and tau synergistically impair the oxidative phosphorylation system in triple transgenic Alzheimer's disease mice. *Proc Natl Acad Sci USA* 2009; **106**: 20057–20062.
10. Sensi SL, Rapposelli IG, Frazzini V, Mascetra N. Altered oxidant-mediated intraneuronal zinc mobilization in a triple transgenic mouse model of Alzheimer's disease. *Exp Gerontol* 2008; **43**: 488–492.
11. Bush AI, Tanzi RE. Therapeutics for Alzheimer's disease based on the metal hypothesis. *Neurotherapeutics* 2008; **5**: 421–432.
12. Adlard PA, Cherny RA, Finkelstein DI, Gautier E, Robb E, Cortes M *et al*. Rapid restoration of cognition in Alzheimer's transgenic mice with 8-hydroxy quinoline analogs is associated with decreased interstitial Abeta. *Neuron* 2008; **59**: 43–55.
13. Cherny RA, Atwood CS, Xilinas ME, Gray DN, Jones WD, McLean CA *et al*. Treatment with a copper-zinc chelator markedly and rapidly inhibits beta-amyloid accumulation in Alzheimer's disease transgenic mice. *Neuron* 2001; **30**: 665–676.
14. Linkous DH, Adlard PA, Wanschura PB, Conko KM, Flinn JM. The Effects of enhanced zinc on spatial memory and plaque formation in transgenic mice. *J Alzheimers Dis* 2009; **18**: 565–579.
15. Stoltenberg M, Bush AI, Bach G, Smidt K, Larsen A, Rungby J *et al*. Amyloid plaques arise from zinc-enriched cortical layers in APP/PS1 transgenic mice and are paradoxically enlarged with dietary zinc deficiency. *Neuroscience* 2007; **150**: 357–369.
16. Adlard PA, Pamcutt JM, Finkelstein DI, Bush AI. Cognitive loss in zinc transporter-3 knock-out mice: a phenocopy for the synaptic and memory deficits of Alzheimer's disease? *J Neurosci* 2010; **30**: 1631–1636.
17. Xu H, Gao HL, Zheng W, Xin N, Chi ZH, Bai SL *et al*. Lactational zinc deficiency-induced hippocampal neuronal apoptosis by a BDNF-independent TrkB signaling pathway. *Hippocampus* 2010.
18. Connor B, Young D, Yan Q, Faull RL, Synek B, Dragunow M. Brain-derived neurotrophic factor is reduced in Alzheimer's disease. *Brain Res Mol Brain Res* 1997; **49**: 71–81.
19. Peng S, Wu J, Mufson EJ, Fahnstock M. Precursor form of brain-derived neurotrophic factor and mature brain-derived neurotrophic factor are decreased in the pre-clinical stages of Alzheimer's disease. *J Neurochem* 2005; **93**: 1412–1421.
20. Hwang JJ, Park MH, Choi SY, Koh JY. Activation of the Trk signaling pathway by extracellular zinc. Role of metalloproteinases. *J Biol Chem* 2005; **280**: 11995–12001.
21. Billings LM, Oddo S, Green KN, McGaugh JL, LaFerla FM. Intraneuronal Abeta causes the onset of early Alzheimer's disease-related cognitive deficits in transgenic mice. *Neuron* 2005; **45**: 675–688.
22. Brown MW, Aggleton JP. Recognition memory: what are the roles of the perirhinal cortex and hippocampus? *Nat Rev Neurosci* 2001; **2**: 51–61.
23. Buffalo EA, Reber PJ, Squire LR. The human perirhinal cortex and recognition memory. *Hippocampus* 1998; **8**: 330–339.
24. Winters BD, Forwood SE, Cowell RA, Saksida LM, Bussey TJ. Double dissociation between the effects of peri-postrhinal cortex and hippocampal lesions on tests of object recognition and spatial memory: heterogeneity of function within the temporal lobe. *J Neurosci* 2004; **24**: 5901–5908.
25. Oddo S, Caccamo A, Kitazawa M, Tseng BP, LaFerla FM. Amyloid deposition precedes tangle formation in a triple transgenic model of Alzheimer's disease. *Neurobiol Aging* 2003; **24**: 1063–1070.
26. Yao J, Irwin RW, Zhao L, Nilsen J, Hamilton RT, Brinton RD. Mitochondrial bioenergetic deficit precedes Alzheimer's pathology in female mouse model of Alzheimer's disease. *Proc Natl Acad Sci USA* 2009; **106**: 14670–14675.
27. Prasad AS. Zinc deficiency: its characterization and treatment. *Met Ions Biol Syst* 2004; **41**: 103–137.
28. Maret W, Sandstead HH. Zinc requirements and the risks and benefits of zinc supplementation. *J Trace Elem Med Biol* 2006; **20**: 3–18.
29. Wuehler SE, Peerson JM, Brown KH. Use of national food balance data to estimate the adequacy of zinc in national food supplies: methodology and regional estimates. *Public Health Nutr* 2005; **8**: 812–819.
30. Maynard CJ, Cappai R, Volitakis I, Laughton KM, Masters CL, Bush AI *et al*. Chronic exposure to high levels of zinc or copper has little effect on brain metal homeostasis or Abeta accumulation in transgenic APP-C100 mice. *Cell Mol Neurobiol* 2009; **29**: 757–767.
31. Hirata-Fukae C, Li HF, Hoe HS, Gray AJ, Minami SS, Hamada K *et al*. Females exhibit more extensive amyloid, but not tau, pathology in an Alzheimer transgenic model. *Brain Res* 2008; **1216**: 92–103.
32. Lee JY, Kim JH, Hong SH, Lee JY, Cherny RA, Bush AI *et al*. Estrogen decreases zinc transporter 3 expression and synaptic vesicle zinc levels in mouse brain. *J Biol Chem* 2004; **279**: 8602–8607.
33. LaFerla FM, Green KN, Oddo S. Intracellular amyloid-beta in Alzheimer's disease. *Nat Rev Neurosci* 2007; **8**: 499–509.
34. Oddo S, Caccamo A, Shepherd JD, Murphy MP, Golde TE, Kaye R *et al*. Triple-transgenic model of Alzheimer's disease with plaques and tangles: intracellular Abeta and synaptic dysfunction. *Neuron* 2003; **39**: 409–421.
35. Kang H, Schuman EM. Long-lasting neurotrophin-induced enhancement of synaptic transmission in the adult hippocampus. *Science* 1995; **267**: 1658–1662.
36. Zuccato C, Cattaneo E. Brain-derived neurotrophic factor in neurodegenerative diseases. *Nat Rev Neurosci* 2009; **5**: 311–322.
37. Huang YZ, Pan E, Xiong ZQ, McNamara JO. Zinc-mediated transactivation of TrkB potentiates the hippocampal mossy fiber-CA3 pyramid synapse. *Neuron* 2008; **57**: 546–558.
38. Besser L, Chorin E, Sekler I, Silverman WF, Atkin S, Russell JT *et al*. Synaptically released zinc triggers metabotropic signaling via a zinc-sensing receptor in the hippocampus. *J Neurosci* 2009; **29**: 2890–2901.
39. Backstrom JR, Lim GP, Cullen MJ, Tokes ZA. Matrix metalloproteinase-9 (MMP-9) is synthesized in neurons of the human hippocampus and is capable of degrading the amyloid-beta peptide (1–40). *J Neurosci* 1996; **16**: 7910–7919.
40. White AR, Du T, Laughton KM, Volitakis I, Sharples RA, Xilinas ME *et al*. Degradation of the Alzheimer disease amyloid beta-peptide by metal-dependent up-regulation of metalloprotease activity. *J Biol Chem* 2006; **281**: 17670–17680.



Cell Death and Disease is an open-access journal published by **Nature Publishing Group**. This work is licensed under the **Creative Commons Attribution-NonCommercial-No Derivative Works 3.0 Unported License**. To view a copy of this license, visit <http://creativecommons.org/licenses/by-nc-nd/3.0/>

Supplementary Information accompanies the paper on Cell Death and Disease website (<http://www.nature.com/cddis>)