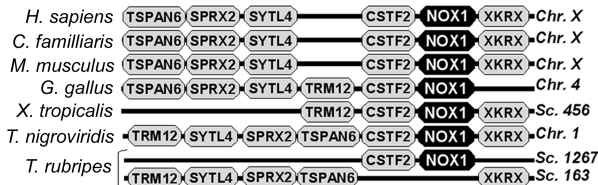


A

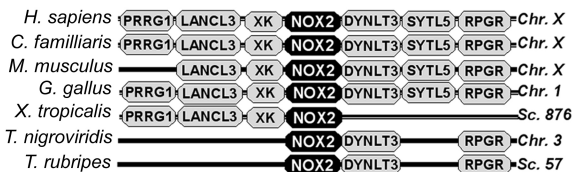
species		Nox1	Nox2	Nox3	Nox4	Nox5	Duox	NOXA	NOXB	NOXC	NOXD	At-rboh
<i>H. sapiens</i>	tetrapod	1	1	1	1	1	2					
<i>C. familiaris</i>	tetrapod	1	1	1	1	1	2					
<i>R. norvegicus</i>	tetrapod	1	1	1	1		2					
<i>M. musculus</i>	tetrapod	1	1	1	1		2					
<i>G. gallus</i>	tetrapod	1	1	1	1	1	1					
<i>X. tropicalis</i>	tetrapod	1	1		1	1	2					
<i>T. nigroviridis</i>	teleost fish	1	1		<sup>a</sup>	<sup>c</sup>	1					
<i>T. rubripes</i>	teleost fish	1	1			<sup>d</sup>	1					
<i>D. rerio</i>	teleost fish	1	1		<sup>b</sup>	<sup>d</sup>	1					
<i>O. latipes</i>	teleost fish	1	1		1	1	1					
<i>C. intestinalis</i>	urochordate		1		1		4					
<i>S. purpuratus</i>	echinodermata		2				1					
<i>D. melanogaster</i>	insect					1	1					
<i>A. gambiae</i>	insect					1	1					
<i>A. mellifera</i>	insect					1	1					
<i>C. elegans</i>	nematode						2					
<i>P. anserine</i>	fungus							1	1			
<i>A. nidulans</i>	fungus							1				
<i>M. grisea</i>	fungus							1	1		1	
<i>F. graminearum</i>	fungus							1	1		1	
<i>D. discoideum</i>	amoeba							1	1		1	
<i>A. thaliana</i>	green plant											
<i>C. crispus</i>	red alga											1
<i>P. yezeensis</i>	red alga											1

10

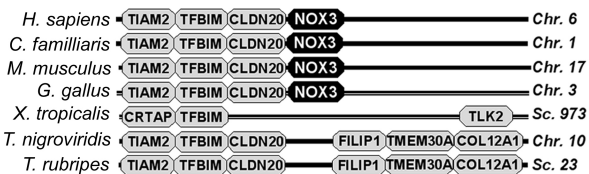
B



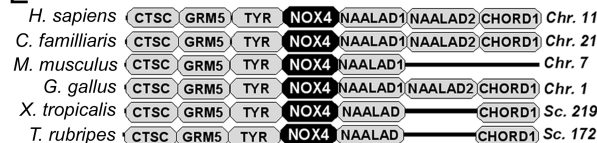
C



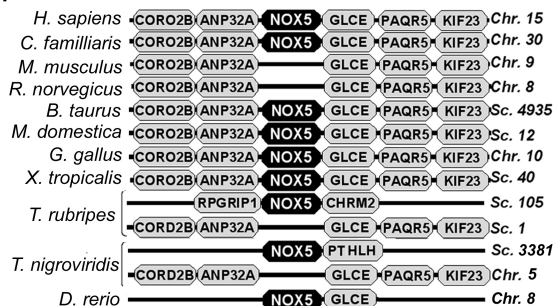
D



E



F



G

