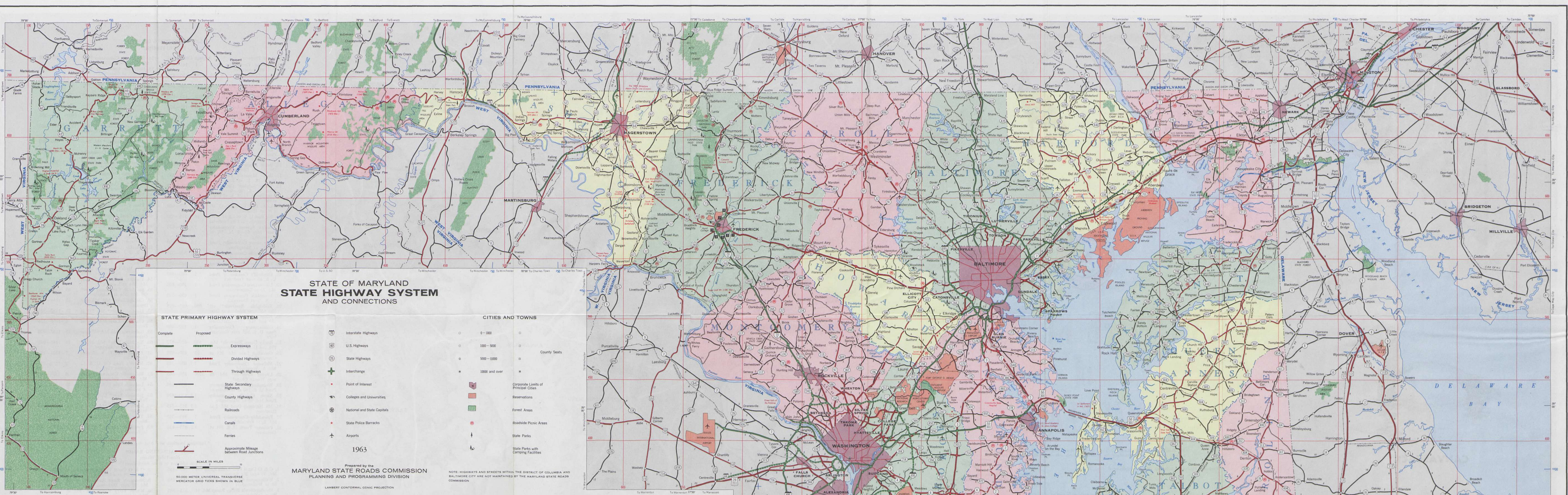


Table listing various towns and villages with their corresponding map grid coordinates (e.g., A-10, B-11, C-12).

Table listing Federal State and Municipal Reservations with their locations and details.

Table listing Maryland State Police Barracks and their locations, including addresses and phone numbers.

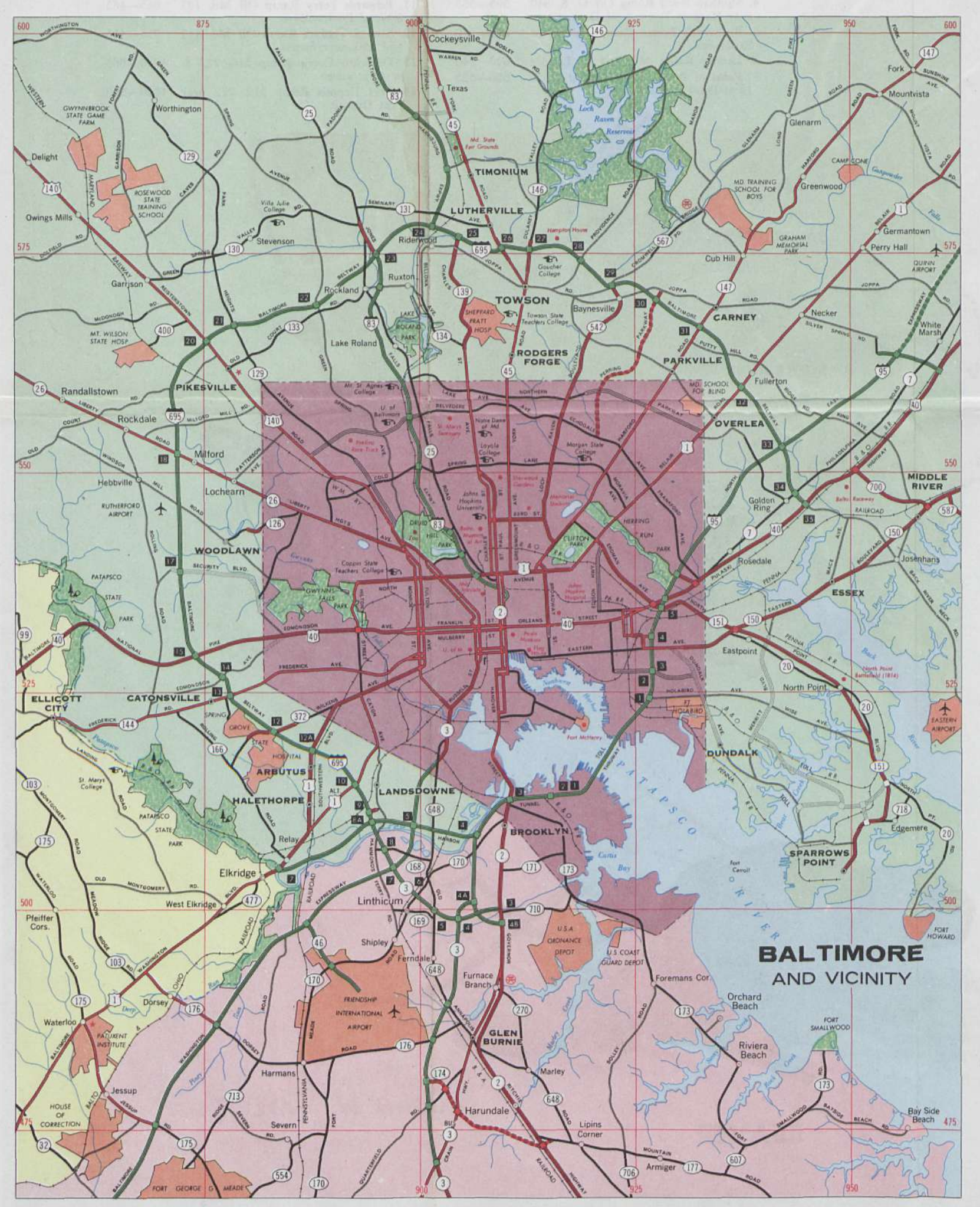
THESE MAPS ARE FOR FREE DISTRIBUTION ONLY. Individual, full color county maps of Maryland may be obtained from the Planning and Programming Division, State Roads Commission, 300 W. Preston Street, Baltimore 3, Maryland.



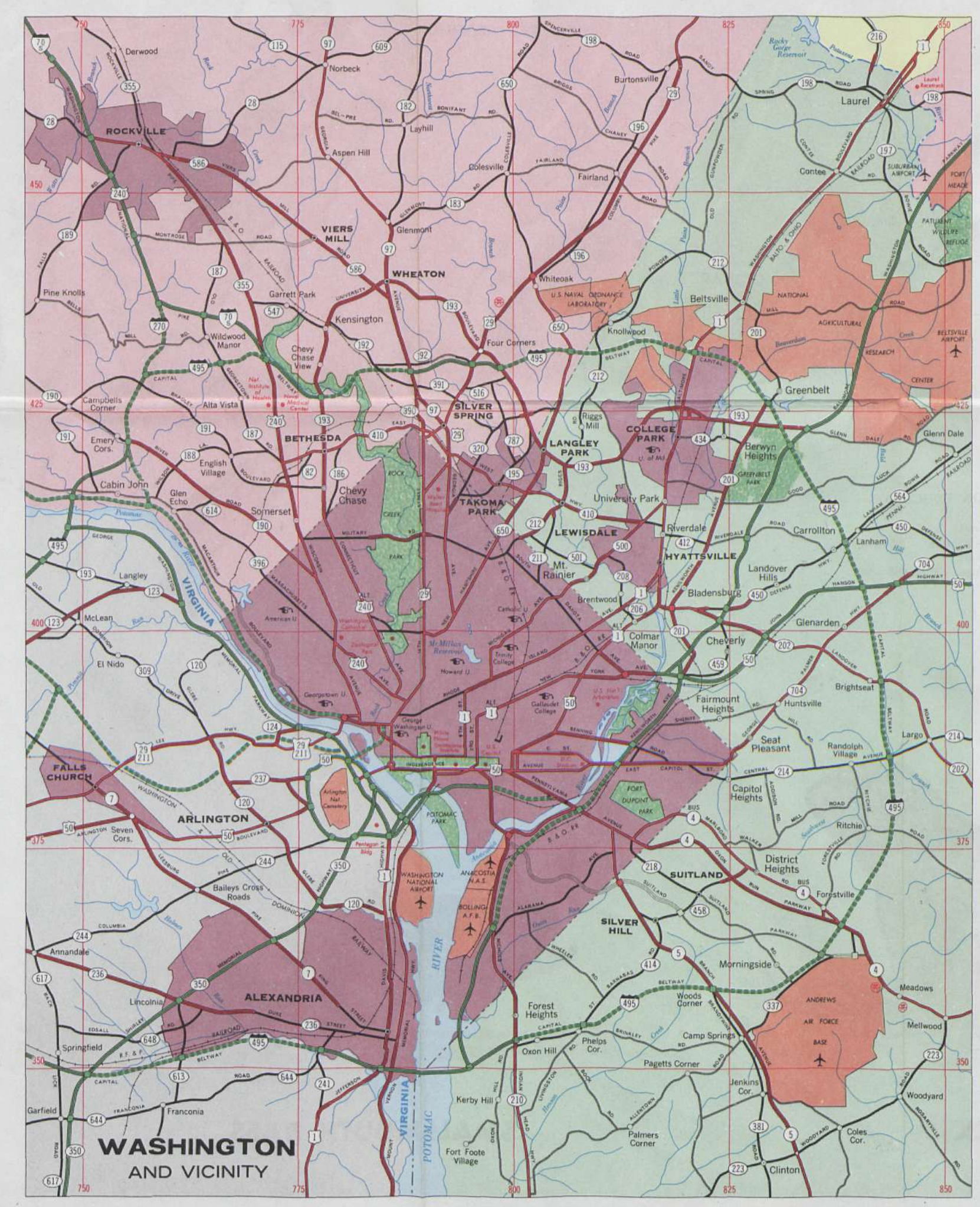
STATE OF MARYLAND STATE HIGHWAY SYSTEM AND CONNECTIONS

- STATE PRIMARY HIGHWAY SYSTEM: Complete, Proposed, Expressways, Divided Highways, Through Highways, State Secondary Highways, County Highways, Railroads, Canals, Ferries, Approximate Mileage between Road Junctions.
- CITIES AND TOWNS: Population ranges, County Seats, Corporate Limits of Principal Cities, Reservations, Forest Areas, Roadside Picnic Areas, State Parks, State Parks with Camping Facilities.

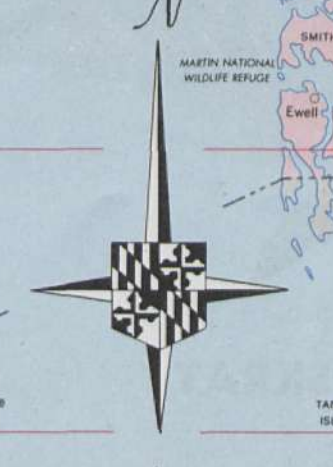
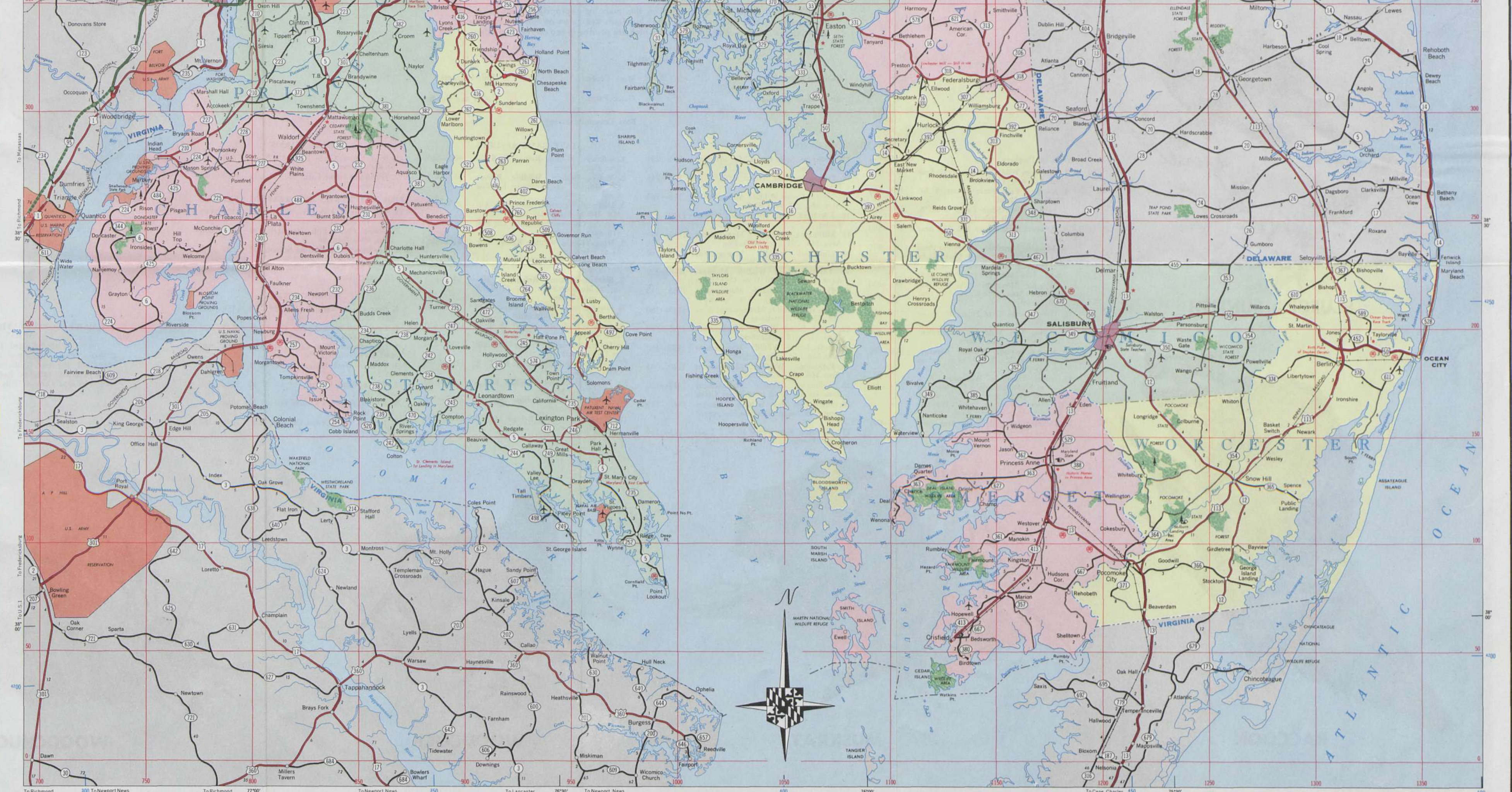
Prepared by the MARYLAND STATE ROADS COMMISSION PLANNING AND PROGRAMMING DIVISION. LAMBERT CONFORMAL CONIC PROJECTION. 1963.



BALTIMORE AND VICINITY



WASHINGTON AND VICINITY





This year, the reverse side of the map shows many of the spots where outdoor recreation facilities are available. I recommend also that you visit the fine picnic areas, forests and parks that have been established and are maintained for your use in Maryland.

Wherever you travel in our State, you will find accommodations staffed by people anxious to serve you and eager to help you enjoy Maryland to the utmost.

Finally, I want to point out that Maryland's roadbuilders have incorporated every modern concept of safety possible into our highways. Won't you show an equal interest and drive with care, observing all the rules of the road established for your safety?

In the hope this map will be both interesting and helpful to you, I am with every good wish,

Sincerely yours,
 J. Millard Tawes
 Governor of Maryland

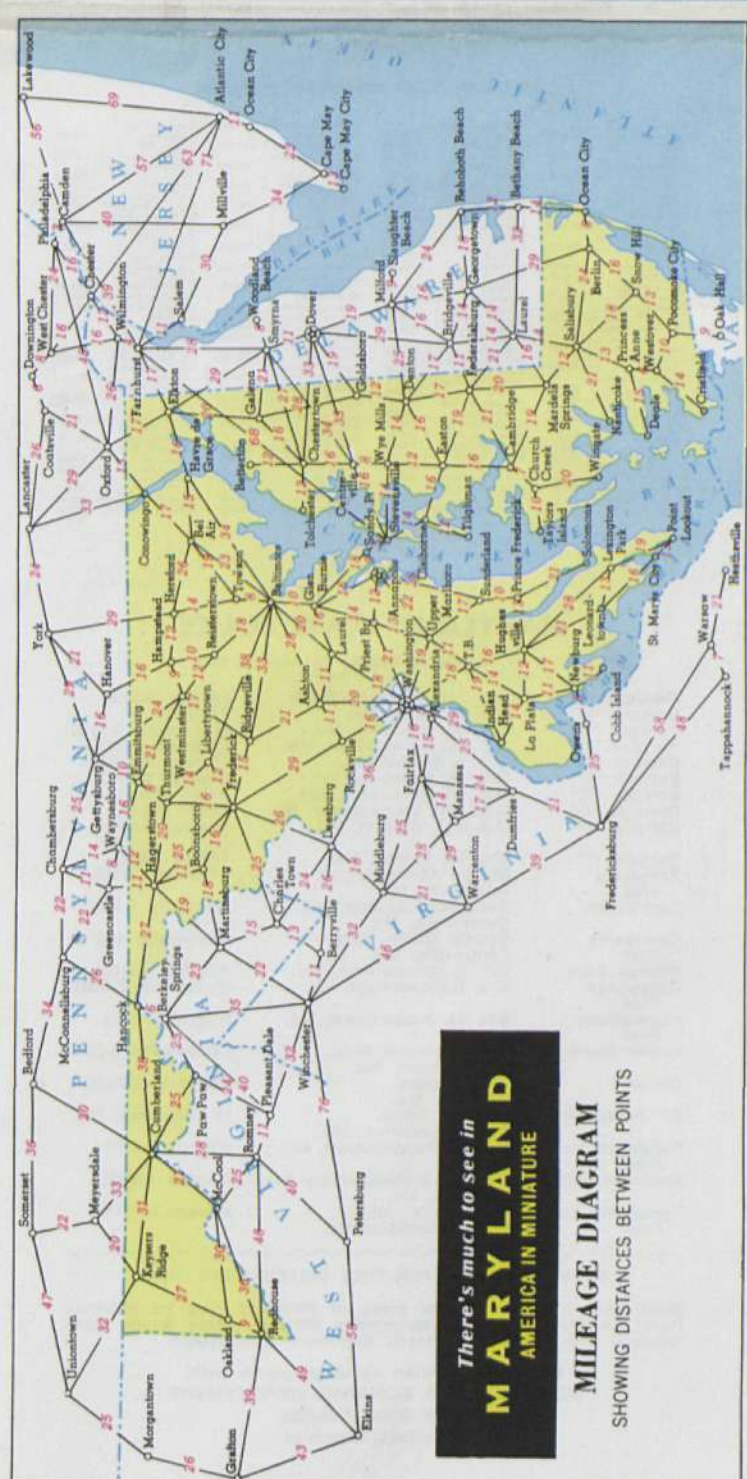
STATE ROADS COMMISSION
 John B. Funk
 Chairman of Commission and Director of Highways

Commission Members:
 Paul J. Bailey, Thomas N. Kay
 Harley P. Brinsfield, John J. McMullen
 Lansdale C. Claggett, William B. Owings

Official Highway Map
MARYLAND



1963



LAKES AND PONDS OPEN TO PUBLIC FISHING

Name of Property	Acreage	Coordinates	
1. Accident Community Pond U. S. 219-Accident	1	145-660	
2. Deep Creek Lake* U. S. 219	150-620	3900	
3. Savage Reservoir Md. 135-4	350	200-620	
4. Youngbush Reservoir Md. 42-2	800	125-690	
5. Pleasant Valley Lake Md. 195	18	165-635	
6. Herrington Lake U. S. 219-3	44	110-390	
7. New Germany Lake U. S. 40	10	205-630	
8. Piney Reservoir Md. 546-8	18	225-695	
9. Estice Creek Community Pond U. S. 40-4	33	345-630	
10. Battie Mison Fishing Hole Md. 51-at Oldtown	1	240-665	
11. Dan's Mountain Pond Md. 36-2	1	240-665	
12. White Sulphur Community Pond U. S. 40-Graneridge State Forest, 12 M. E. of Flintstone	1	390-675	
13. Little Pool U. S. 40-3	31	470-680	
14. Big Pool U. S. 40-6	88	515-650	
15. Indian Springs Community Pond Md. 56-8	1.3	510-680	
16. Sharpshooter Community Pond Md. 65 at Sharpsburg	1.2	590-390	
17. Brownsville Community Pond Md. 67 at Brownsville	1.2	610-375	
18. Frank Benz Memorial Pond Md. 77 East of Thurmont	2	680-655	
19. Gambell's Community Pond U. S. 40 near Frederick	1	660-390	
20. Libertytown Community Pond U. S. 79 at Brunswick	1	730-400	
21. Brunswick Community Pond U. S. 79 at Brunswick	1	630-350	
22. Tridolphia Reservoir* off Md. 650 near Brighton at Dam	800	695-495	
23. Kings Community Pond U. S. 355 and Md. 121-Clarksburg	1.3	730-490	
24. Gaithersburg Community Pond U. S. 365 near Gaithersburg	1	730-525	
25. Rocky Gorge Reservoir* Md. 198 and U. S. 29-Burtonsville	300	820-470	
26. Greenbelt Lake Md. 564 at Greenbelt	22	830-435	
27. Melwood Community Pond Md. 3-Woodward	1.3	850-355	
28. Liberty Reservoir* Md. 26	3100	830-365	
29. Westminister Community Pond U. S. 140 at Westminister	1.3	800-610	
30. North Carroll Community Pond Md. 30 at Manchester	1.2	830-670	
31. Mt. Harmony Pond Md. 2 at Harmony	2.3	915-325	
32. Friendship Community Pond Md. 2 at Friendship	1	915-330	
33. Patuxent Ponds U. S. 301 at Conways	3.2	875-435	
34. Hughsville Community Pond U. S. 301 at Hughsville	1	860-260	
35. Cedarville Community Lake Md. 23 at Cedarville	4	850-290	
36. Gwynnbrook Community Pond Off U. S. 140-near Owings Mills	1.3	865-580	
37. Hillcrest Pond Md. 144 at Landowise	4	900-310	
38. Lake Roland* Md. 139-Baltimore	80	910-560	
39. Loch Raven Reservoir* Md. 146-Dulaney Valley Rd.	2400	920-595	
40. Prettyboy Reservoir* Md. 1500	870-660		
41. Atkinson Reservoir* Md. 24-near Emmorton	91	980-605	
42. Bynum Run Community Pond Md. 22 at Bel Air	1.1	985-615	
43. Forest Hill Community Pond Md. 23 at Forest Hill	1.3	970-640	
44. Conowingo Reservoir* U. S. 1 at Conowingo	5000	1020-675	
45. Rising Sun Community Pond U. S. 1 at Rising Sun	1	1064-680	
46. Elkton Community Pond Md. 7 at Elkton	1.3	1135-648	
47. Plum Creek Pond off U. S. 40 near Elkton	4	1110-636	
48. Back Creek Lake* U. S. 215 near Chesapeake City	8	1128-615	
49. Fraser Lake* U. S. 215 near Cecilton	40	1117-590	
50. Stremmers Lake* Md. 282 near Crystal Beach	90	1090-590	
51. Urville Community Lake* U. S. 213 near Chestertown	35	1073-530	
52. St. Paul's Lake Md. 20 at Fairlee	30	1030-315	
53. Wye Mills Community Lake* Off U. S. 50 at Wye Mills	50	1060-405	
54. Union Lake* U. S. 301, Md. 341 at Union	45	1125-315	
55. Smithville Community Lake* Off Md. 404 at Smithville	40	1160-344	
56. Garland Lake* Md. 313 near Denton	45	1144-400	
57. Linchester Lake* Md. 331 at Preston	25	1112-322	
58. Chambers Lake Md. 306 at Federalsburg	6	1150-316	
59. Galathea Lake Md. 313 near Galathea	15	1167-270	
60. Big Mills Lake* Md. 12 off U. S. 113 near Stockton	10	1242-072	
61. Tangle Pond U. S. 50 near Ocean City	3	1331-192	
62. Moore's Pond Off U. S. 13 near Pocomoke City	2	1218-096	
63. Bishopville Community Lake Md. 367 at Bishopville	8	1316-230	
64. Leonard Lake U. S. 13 north of Salisbury	30	1210-212	
65. Johnsons Lake* U. S. 13 at Salisbury	108	1204-203	
66. Schumaker Lake Md. 12 near Salisbury	35	1220-180	
67. Tony Tank U. S. 50 at Salisbury	6	1202-198	
68. Powellville Pond* Md. 254 at Powellville	4	1265-186	

* Indicates locations with boat ramp facilities.

BOAT LAUNCHING RAMPS
 Non-Tidal Waters
 (In addition to those listed above)

1. C & O Canal Four Locks Ramp Off	540-655	8. C & O Canal Viaduct Ramp No. 2	570-505
2. Md. 56 near Big Spring	565-650	9. Off Md. 28 near Dickerson	575-310
3. Williamsport River Front Ramp Md. 68 at Williamsport	575-585	10. Monocacy River Ramp No. 1 Off Md. 28 near Dickerson	655-475
4. Shepherdsdown Bridge Ramp Md. 34 W. of Sharpsburg	595-555	11. Whites Ferry Ramp Md. 107 at Whites Ferry	655-475
5. Shinhan Road Ramp Off U. S. 340 near Harpers Ferry S. of Dogan	625-540	12. Seneca Viaduct Ramp Off Md. 112 S.W. of Poolesville	715-445
6. Brunswick Bridge Ramp Md. 79 at Brunswick	640-540	13. Seneca Viaduct Ramp Off Md. 112 and 190 near Seneca	1040-665
7. Lander Ramp Md. 464 at Lander of Conowingo	650-525	14. Port Deposit Ramp Md. 222 near Port Deposit	1050-650

WILDLIFE RESOURCES
 of
MARYLAND

We thank Governor J. Millard Tawes and the State Roads Commission for their interest in our wildlife resources and particularly for making available this side of the 1963 map for our use.

Prepared by Public Relations Division: Malcolm E. King, Chief
 Ernest A. Vaughn, Director
 Maryland Game & Inland Fish Commission

Map Reading Guide
 Facilities and areas can be located on this map by appropriate symbols and numbers printed in red and blue. Exact locations are given on the reverse side by using the listed coordinate numbers which are printed in red on the map edges.

LEGEND

- Public Hunting Lands
- State Game Refuges
- Work Centers
- Game Farms
- Fish Hatcheries
- Lakes and Ponds
- Boat Launching Ramps

Name of Property	Coordinates	1. Billweyer Wildlife Refuge U. S. 40	2. McKee-Bethers Wildlife Refuge Off Md. 107 on Sycamore Landing Road	3. Diersen Waterfowl Sanctuary Off Md. 190 at Pymfield Locks	4. Serles Conservation Center Off Md. 118 near Germantown	5. Hugo Thomas Wildlife Refuge Md. 32 at Sykesville	6. Harry Bowen Wildlife Refuge Md. 301 at Aquasco	7. Blackiston Island Refuge & Historical Monument Md. 242-3/4 M. off shore near Colton	8. Gwynnbrook Wildlife Refuge Off Md. 140 near Owings Mills	9. Coch Wildlife Refuge Off U. S. 40 near Elkton	10. Ivywild Wildlife Refuge Md. 306 1155-320 at Federalsburg	11. LeCompte Wildlife Refuge Off U. S. 1120-230 on Md. 147	12. Pocomoke Sound Wildlife Refuge 1155-60 at Elkton	13. Johnsons Bay Wildlife Management Area Small Islands in Sinepuxent Bay	14. Girdletree Wildlife Refuge Md. 12 1260-90 near Girdletree
13. Cedarville State Forest Md. 381 near Brandywine	850-294	1. Belle Grove Game Farm U. S. 40	2. McKee-Bethers Wildlife Refuge Off Md. 107 on Sycamore Landing Road	3. Diersen Waterfowl Sanctuary Off Md. 190 at Pymfield Locks	4. Serles Conservation Center Off Md. 118 near Germantown	5. Hugo Thomas Wildlife Refuge Md. 32 at Sykesville	6. Harry Bowen Wildlife Refuge Md. 301 at Aquasco	7. Blackiston Island Refuge & Historical Monument Md. 242-3/4 M. off shore near Colton	8. Gwynnbrook Wildlife Refuge Off Md. 140 near Owings Mills	9. Coch Wildlife Refuge Off U. S. 40 near Elkton	10. Ivywild Wildlife Refuge Md. 306 1155-320 at Federalsburg	11. LeCompte Wildlife Refuge Off U. S. 1120-230 on Md. 147	12. Pocomoke Sound Wildlife Refuge 1155-60 at Elkton	13. Johnsons Bay Wildlife Management Area Small Islands in Sinepuxent Bay	14. Girdletree Wildlife Refuge Md. 12 1260-90 near Girdletree



CANVASBACK

BLUEGILL SUNFISH

RACCOON

MUSKRAT

WOODCOCK

WOODCHUCK

SMALLMOUTH BASS

BEAVER

JOHN W. TAYLOR

There's much to see in
MARYLAND
 AMERICA'S BIRTHPLACE
 MILEAGE DIAGRAM
 SHOWING DISTANCES BETWEEN POINTS