

A systematic review of loss of independence in Parkinson's disease

Angus D Macleod^{1*}, Grieve JWK², Carl E Counsell¹

¹Institute of Applied Health Sciences, University of Aberdeen, Polwarth Building, Foresterhill, Aberdeen, AB25 2ZD, UK

²Institute of Neurological Sciences, Southern General Hospital, 1345 Govan Road, Glasgow, G51 4TF, UK

*Corresponding author: Dr A D Macleod

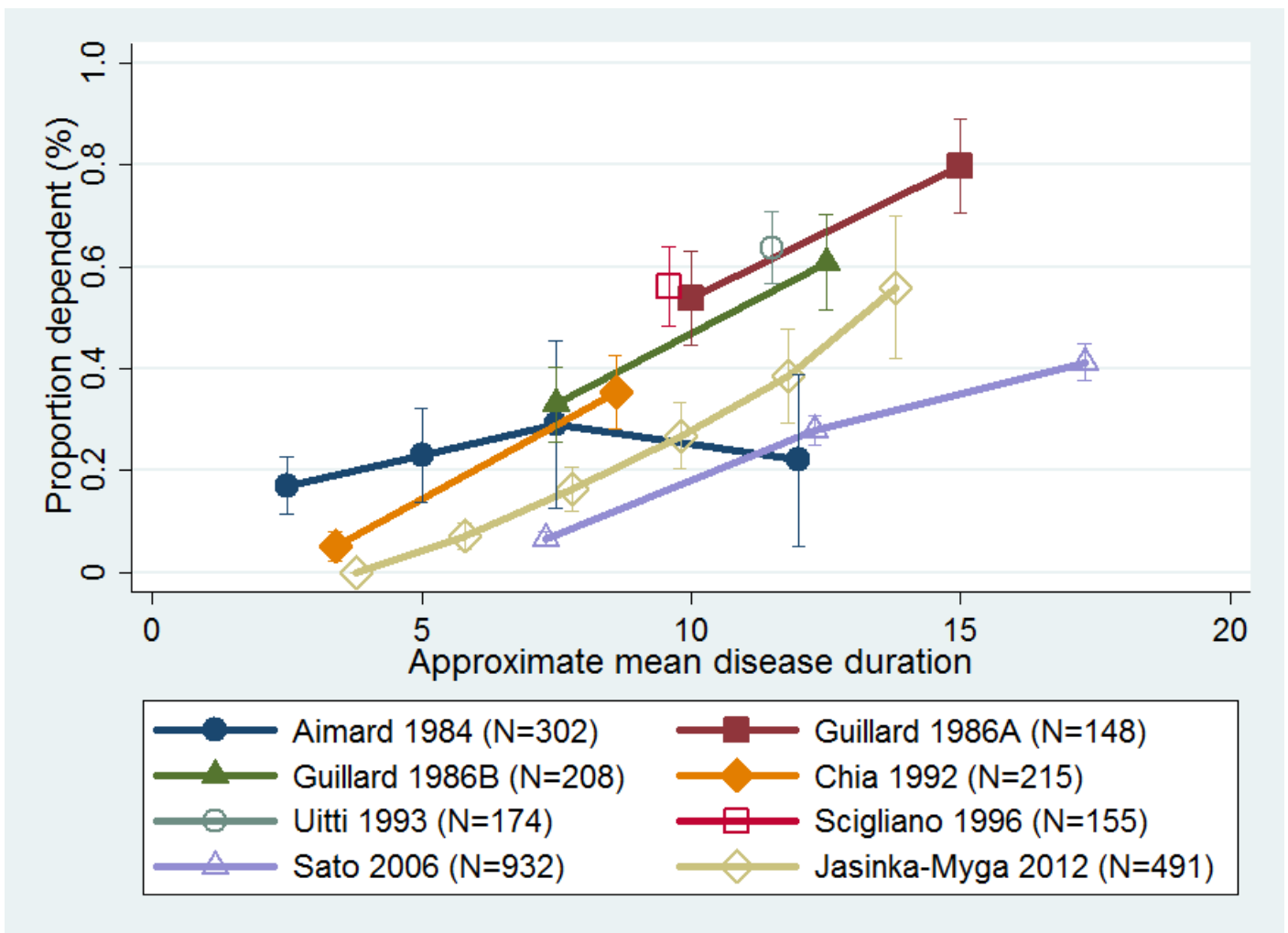
Address: Room 1:014, Institute of Applied Health Sciences, University of Aberdeen, Polwarth Building, Foresterhill, Aberdeen, AB25 2ZD, UK

Telephone: +44 (0)1224 437120

Fax: +44 (0)1224 551188

E-mail address: Angus.Macleod@abdn.ac.uk

Supplementary figure: Proportion dependant by approximate mean disease duration in eight non-inception cohorts.



Vertical bars represent the 95% confidence interval for each observation. The mean disease durations used in this figure are mostly derived from the reported mean disease duration at baseline and the length of follow-up within each study at which the outcomes were reported. Thus some of these values are approximate. The disease duration at baseline was not reported for the study by Aimard et al and Guillard et al and these have been estimated.