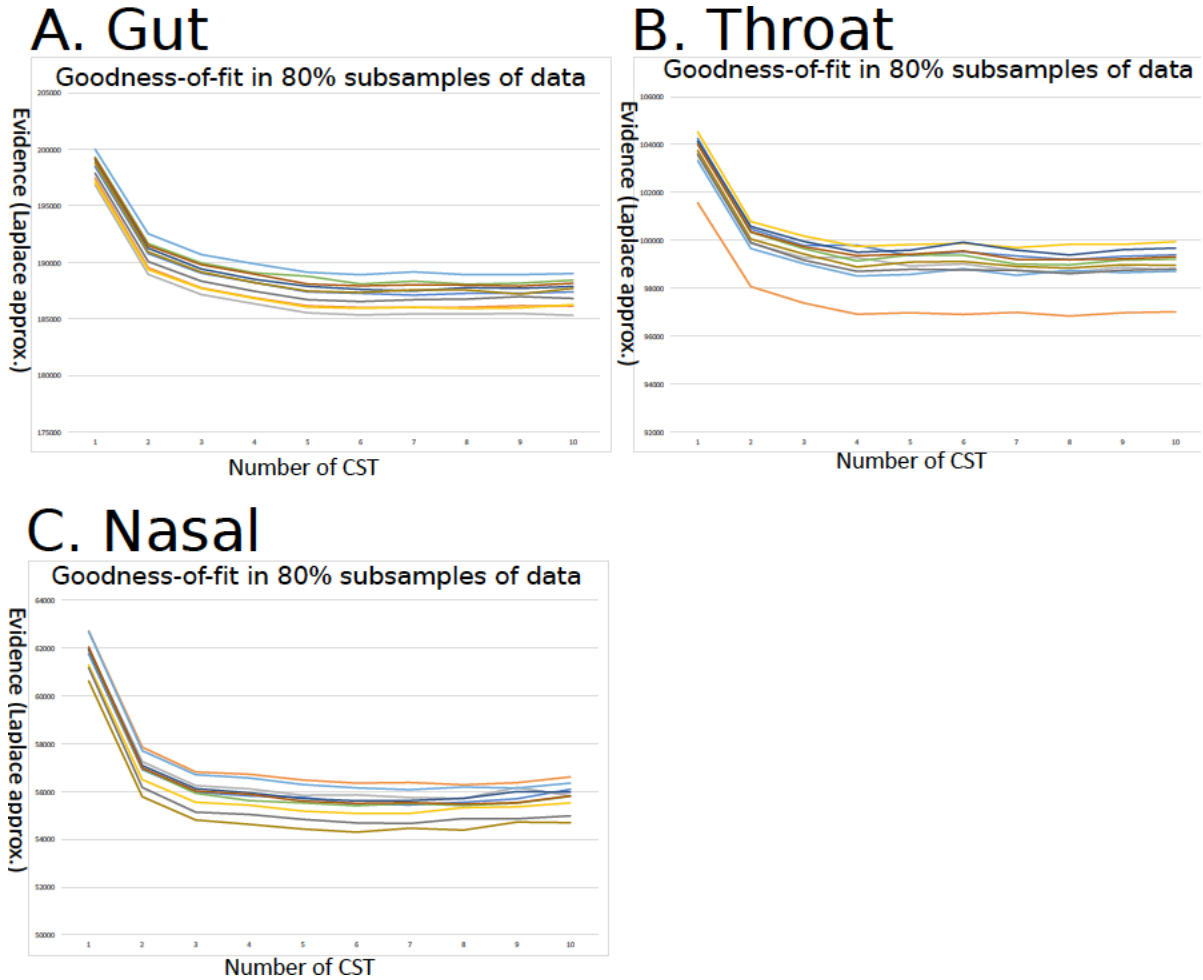


### Supplemental Figure 3



**Supplemental Figure 3. Goodness of fit for Dirichlet multinomial mixture models in 80% subsamples of data in gut (A), throat (B) and nasal (C).** A series of models that included from 1 to 10 Dirichlet-multinomial components were fit 10 times to datasets subsampled without replacement. The Laplace approximation to the Bayesian evidence was calculated for each subsample.