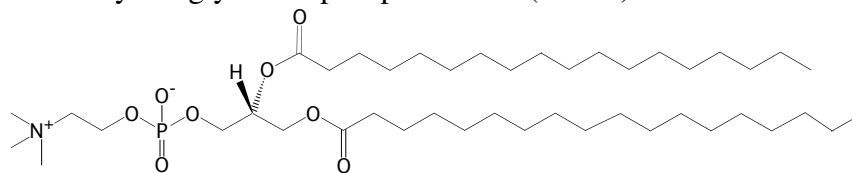
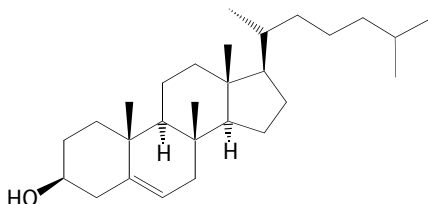


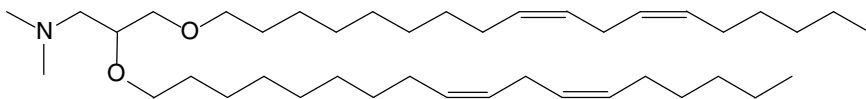
a. 1,2-Distearoyl-sn-glycero-3-phosphocholine (DSPC) MW 387



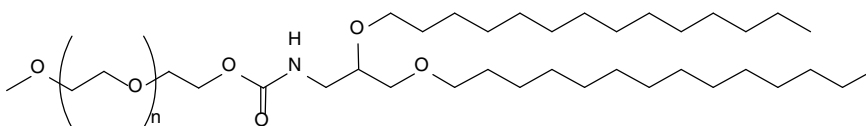
b. Cholesterol MW 790



c. 1,2-dilinoleyloxy-*N,N*-dimethyl-3-aminopropane (DLinDMA) MW 616



d. 3-*N*-[( $\omega$ -Methoxy poly(ethylene glycol)<sub>2000</sub>)carbonyl]-1,2-dimyristyloxy-propylamine (PEG-C-DMA) MW 2524



Average  $M_n = ca. 2000$

**Supplementary Figure 1. SNALP Lipids.** (a) 1,2-Distearoyl-sn-glycero-3-phosphocholine (DSPC) (b) Cholesterol (Chol) (c) 1,2-dilinoleyloxy-*N,N*-dimethyl-3-aminopropane (DLinDMA) (d) 3-*N*-[( $\omega$ -Methoxy poly(ethylene glycol)<sub>2000</sub>)carbonyl]-1,2-dimyristyloxy-propylamine (PEG-C-DMA)