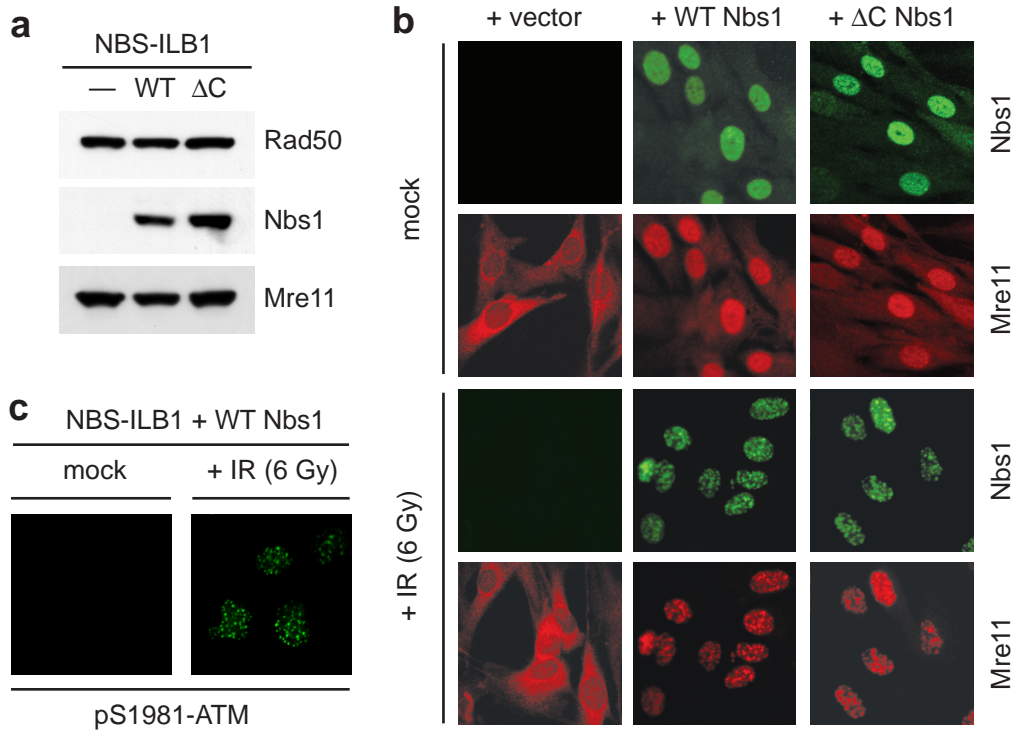


Falck et al., Supplementary Figure S2



Supplementary Figure S2. ATM interaction is not required for IR-induced focus formation by MRN. **a**, Extracts from vector- (-), wild-type (WT), and Δ C-complemented NBS-ILB1 cells were immunoblotted as indicated. **b**, Vector-, WT and Δ C-complemented NBS-ILB1 cells were either mock treated or irradiated with 6 Gy of IR. One hour post-treatment, cells were fixed and immunostained with antibodies to Nbs1 (green) and Mre11 (red). **c**, WT-complemented NBS-ILB1 cells were either mock treated or irradiated with 6 Gy of IR. One hour post-treatment, cells were fixed and immunostained with an anti-pS1981-ATM antibody.