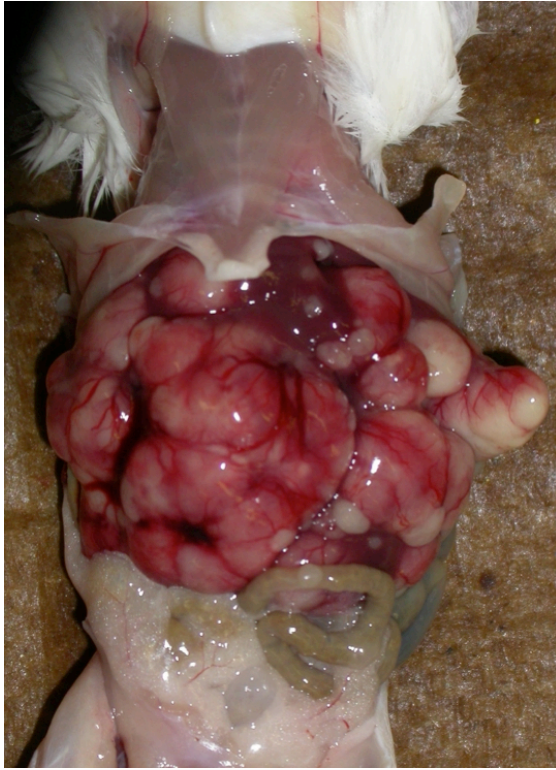
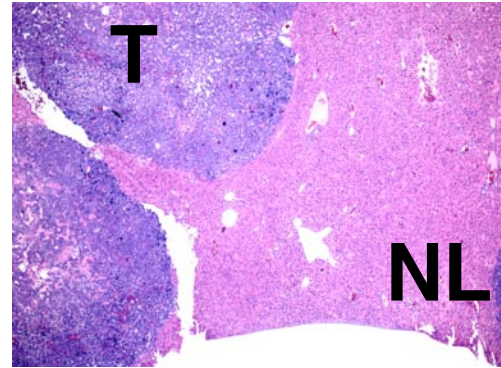


Supplementary Fig 2.

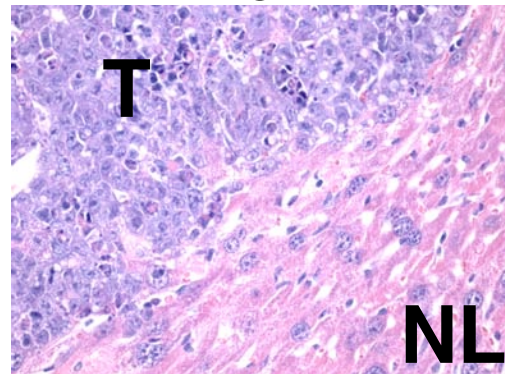
a



b



25X



400X

Supplementary Fig. 2: A *MYC*-dependent mouse liver cancer model. (a) Example of a Tet-O-*MYC* / LAP-tTA transgenic mouse 8 weeks after doxycycline was removed from the diet. The liver is largely replaced by a multi-focal liver tumor. (b) H+E stained samples of normal (NL) and tumor (T) tissue (magnification is indicated).