

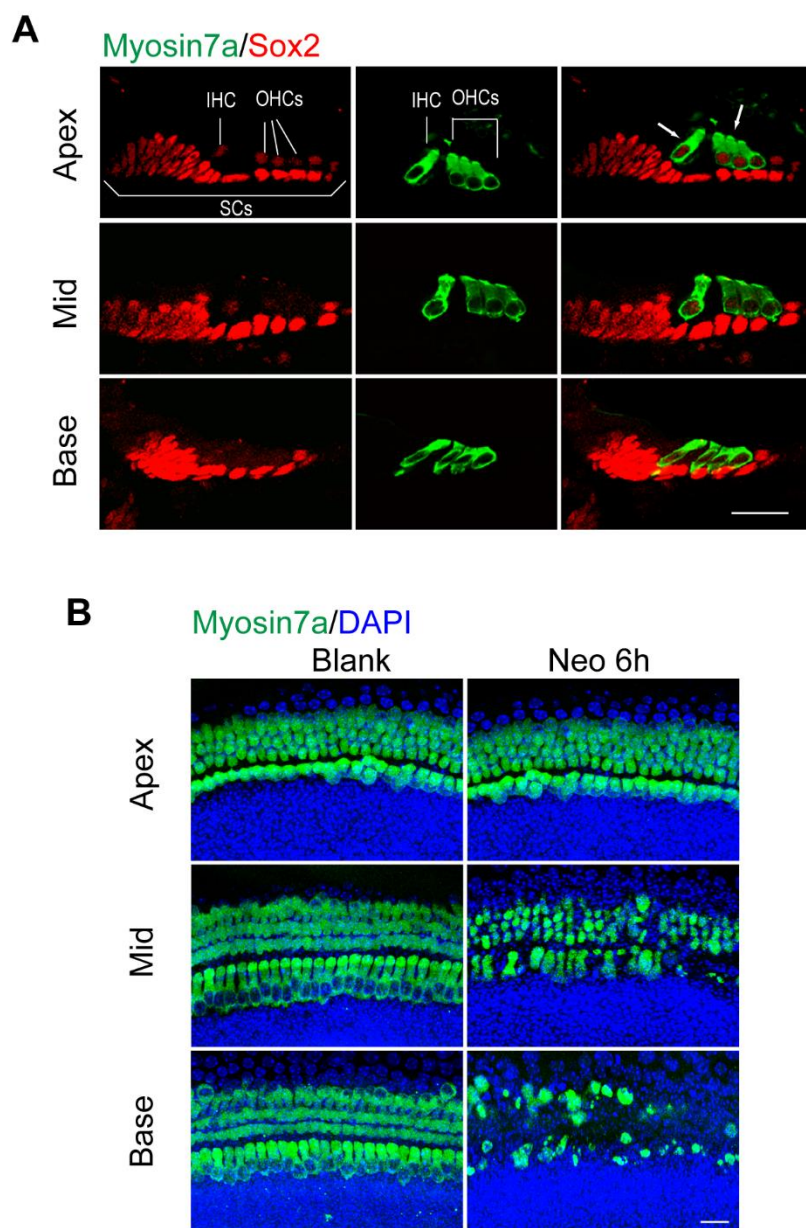
Supplementary information

Supplementary Table 1 Primers used in qPCR.

Gene	Forward Primers (5'-3')	Reverse Primers (5'-3')
Prka α 1	GTCAAAGCCGACCCAATGATA	CGTACACGCAAATAATAGGGGTT
Caspase 3	ATGGAGAACAACAAAACCTCAGT	TTGCTCCCATGTATGGTCTTTAC
Caspase 8	TGCTTGACTACATCCCACAC	TGCAGTCTAGGAAGTTGACCA
Caspase 9	TCCTGGTACATCGAGACCTTG	AAGTCCCTTTTCGCAGAAACAG
Ripk1	GAAGACAGACCTAGACAGCGG	CCAGTAGCTTCACTACTCGAC
Ripk3	TCTGTCAAGTTATGGCCTACTGG	GGAACACGACTCCGAACCC'
Tnf	GACGTGGAAGTGGCAGAAAGAG	TTGGTGGTTTGTGAGTGTGAG
Il-1 β	GCAACTGTTCTGAAGTCAACT	ATCTTTTGGGGTCCGTCAACT'
Il-6	TAGTCCTTCCACCCCAATTTCC	TTGGTCCTTAGCCACTCCTTC
Aif	TCCAGAGGCCGAAACAGAG	CATTTTGCCCCCTGATGAACC
Endo G	TTCCGCGAGGATGACTCTGT	CACCTGAGGCGCTACGTTG
Bax	TGAAGACAGGGGCCTTTTTG	AATTCGCCGGAGACTCG
Actb	GGCTGTATTCCCCTCCATCG	CCAGTTGGTAACAATGCCATGT

Supplementary Table 2 Primers used in genotyping.

Genes	Primers (5'-3')
Sox2OE Wild Type F	AGTCGCTCTGAGTTGTTATCAG
Sox2OE Wild Type R	TGAGCATGTCTTTAATCTACCTCGATG
Sox2OE Mutant F	CCAGTAGACTGCACATGGCCC
Sox2OE Mutant R	GCCATACGGGAAGCAATAGCATG
PrestinCreER 1	CACAAGTTGTGAATGACCTC
PrestinCreER 2	TAACTGCTAGCATTTCCCTT
PrestinCreER 3	GTAAAGAGCGTAATCTGGAACA
Atoh1CreER Mutant F	GCGGTCTGGCAGTAAAACTATC
Atoh1CreER Mutant R	GTGAAACAGCATTGCTGTCATT

**Figure S1**

Cochlear HC sensitivity to ototoxic drugs increased from the apical to basal turns.

(A) Images of cochlear cross-sections (orthogonal views) showing endogenous Sox2 expression in cochlear HCs and supporting cells in P2 mice. **(B)** Cochlear epithelia from P2 mice (wild type) were cultured and treated with 1 mM neomycin for 6 h, allowed to recover for 24 h, then fixed for Myosin7a immunofluorescence analysis. Scale bars: 20 μ m.