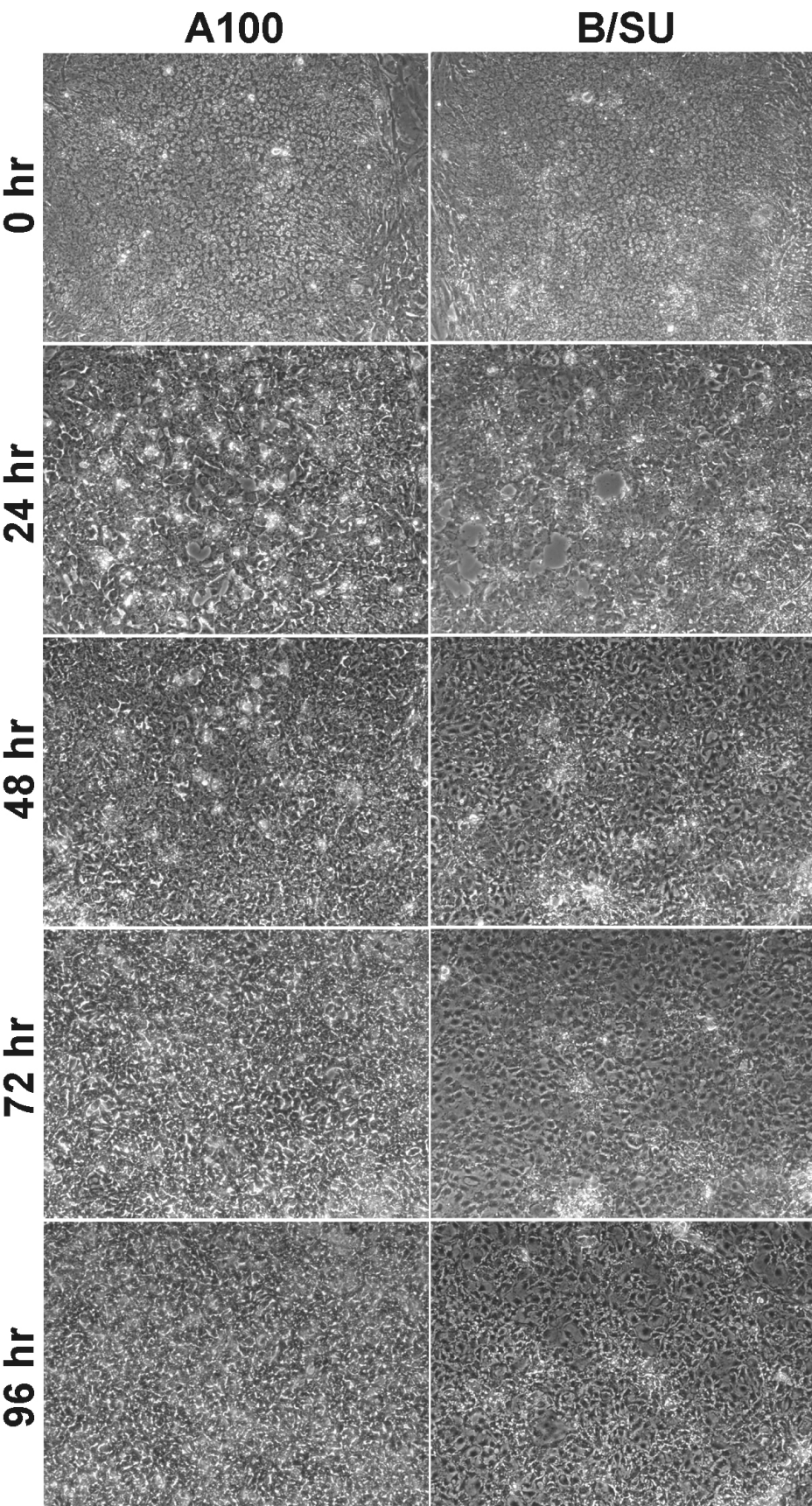


Supplementary Fig. 3 Phase contrast images of activin and BMP4/SU5402 treated cultures.



Colonies of hESCs (note classical morphology at 0 hours) were followed at 24 hour intervals in differentiation conditions containing either 100 ng/mL activin A (A100) or 100 ng/mL BMP4 and 5  $\mu$ M SU5402. Overt differentiation and loss of classical hESC morphology is apparent at 24 hours in most cells. Very different cellular morphologies are present in each culture condition by 24-48 hours. By 96 hours, there are more cells present in the activin treated plates and the BMP4/SU5402 treated plates produce a confluent monolayer of cells with a uniform morphology.