

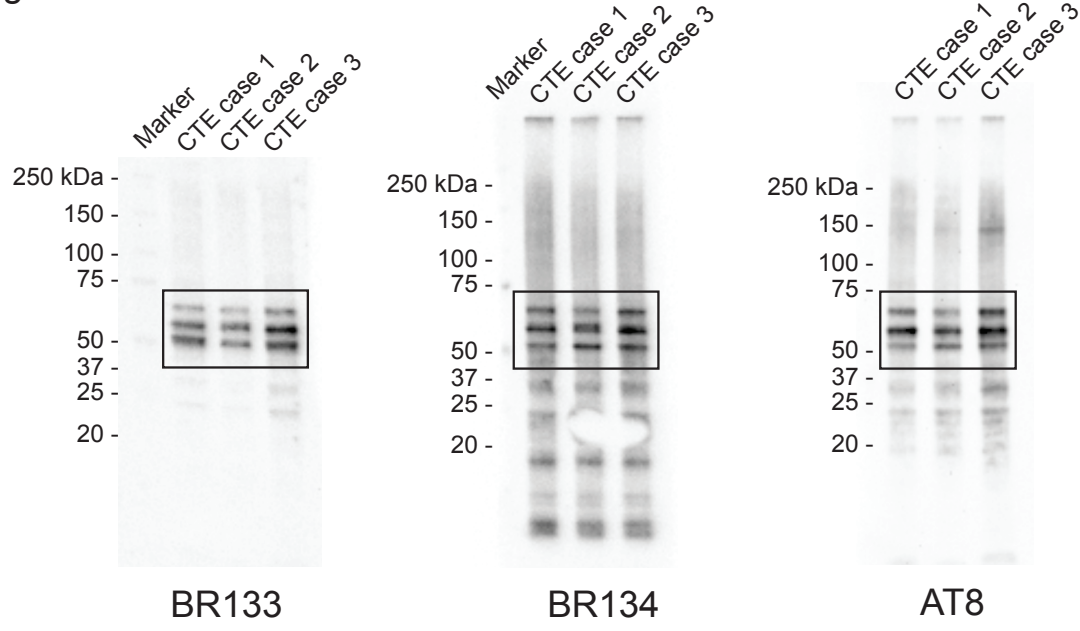
In the format provided by the authors and unedited.

Novel tau filament fold in chronic traumatic encephalopathy encloses hydrophobic molecules

Benjamin Falcon¹, Jasenko Zivanov¹, Wenjuan Zhang¹, Alexey G. Murzin¹, Holly J. Garringer², Ruben Vidal², R. Anthony Crowther¹, Kathy L. Newell³, Bernardino Ghetti², Michel Goedert^{1,4*} & Sjors H. W. Scheres^{1,4*}

¹MRC Laboratory of Molecular Biology, Cambridge, UK. ²Department of Pathology and Laboratory Medicine, Indiana University School of Medicine, Indianapolis, IN, USA. ³Department of Pathology and Laboratory Medicine, University of Kansas School of Medicine, Kansas City, KS, USA. ⁴These authors jointly supervised this work: Michel Goedert, Sjors H. W. Scheres. *e-mail: mg@mrc-lmb.cam.ac.uk; scheres@mrc-lmb.cam.ac.uk

Ext. Data Fig. 1d



Ext. Data Fig. 2a

