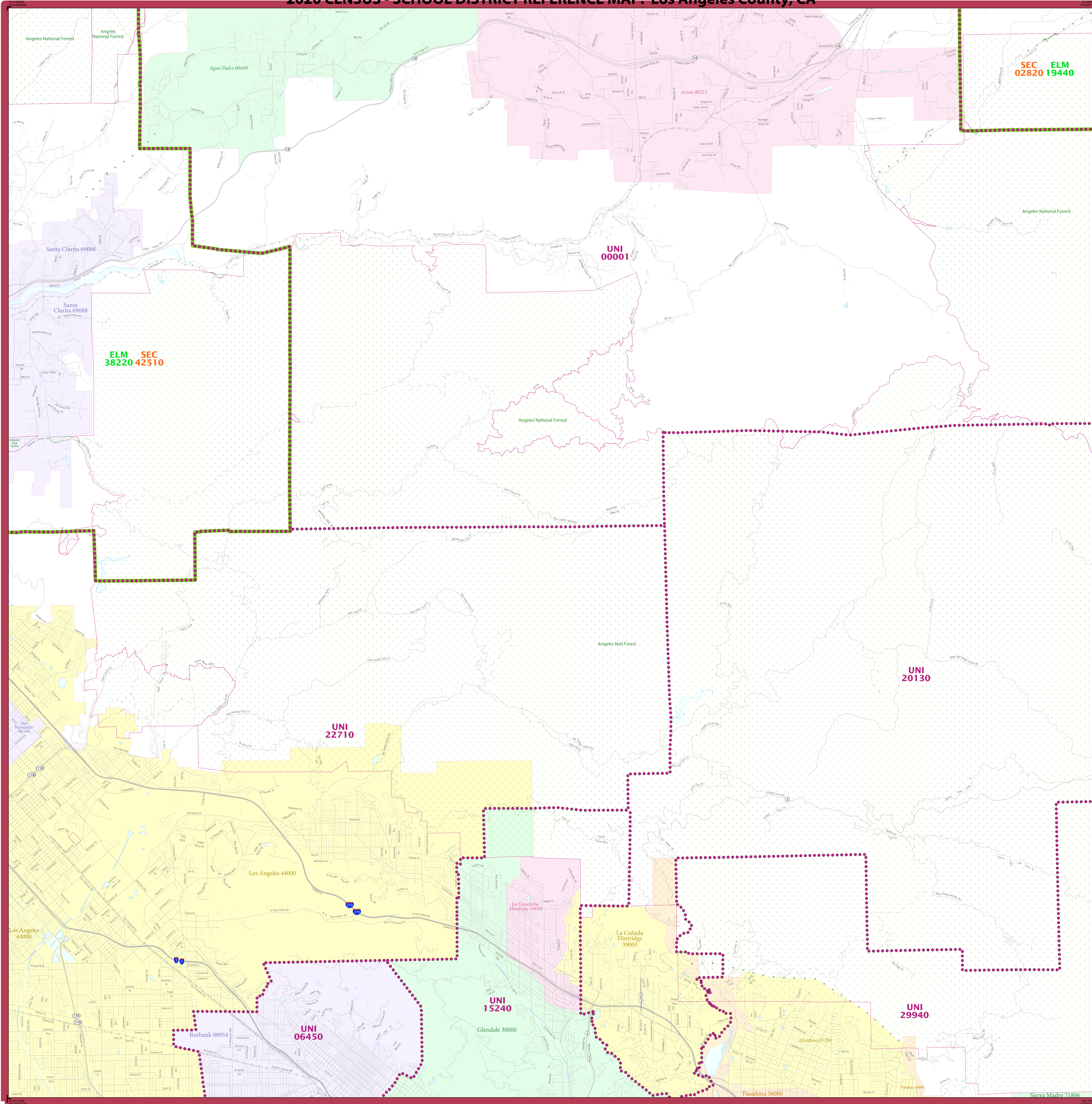


2020 CENSUS - SCHOOL DISTRICT REFERENCE MAP: Los Angeles County, CA



LEGEND

SYMBOL DESCRIPTION	SYMBOL	LABEL STYLE
International	☆☆☆☆☆	CANADA
Federal American Indian Reservation	L'ANSE RES 1880
Off-Reservation Trust Land	T1880
State American Indian Reservation	Tama Res 9400
Alaska Native Regional Corporation	+++++	NANA ANRC 52120
State (or statistically equivalent entity)		NEW YORK 36
County (or statistically equivalent entity)	□□□□□	ERIE 029
Minor Civil Division (MCD) ^{1,2}	○○○○○	Bristol town 07485
Consolidated City	○○○○○	MILFORD 47500
Incorporated Place ^{3,4}	■ ■ ■ ■ ■	Davis 18100
Census Designated Place (CDP) ²	■ ■ ■ ■ ■	Incline Village 35100
Unified School District ⁴	UNI 03370
Secondary School District ⁴	SEC 99965
Elementary School District ⁴	ELM 02220

DESCRIPTION	SYMBOL	DESCRIPTION	SYMBOL
Interstate	—[4]—	Water Body	■
U.S. Highway	—[2]—	Placid Lake	■
State Highway or State Road	—[1]—	Military	■
Other Road	—[0]—	National or State Park, Forest, or Recreation Area	■
Other Road	—[0]—	Yosemite NP	■
4WD Trail, Stairway, Alley, Walkway, or Ferry	—[0]—	Inset Area	■
Railroad	—[0]—	Outside Subject Area	■
Pipeline or Power Line	—[0]—		
Ridge or Fence	—[0]—		
Nonvisible Boundary or Feature Not Elsewhere Classified	—[0]—		

Where international, state, county, and/or MCD boundaries coincide, the map shows the boundary symbol for only the highest-ranking of these boundaries. Geographic area names are followed by either their FIPS or census code.

1 MCD boundaries are shown in the following states in which some or all MCDs function as general-purpose governmental units: Connecticut, Illinois, Indiana, Kansas, Maine, Massachusetts, Michigan, Minnesota, Missouri, Nebraska, New Hampshire, New Jersey, New York, North Dakota, Ohio, Pennsylvania, Rhode Island, South Dakota, Vermont, and Wisconsin. (Note that Illinois and Nebraska have some counties covered by nongovernmental precincts and Missouri has most counties covered by nongovernmental townships.)

2 A " " following an MCD name denotes a false MCD. A " " following a place name indicates that a false MCD exists with the same name and FIPS code as the place; the false MCD label is not shown.

3 Place label color corresponds to the place fill color.

4 A " " following a label indicates that the school district is in more than one county.

Due to space limitations, some areas and features such as water bodies, parks, and roads may not be labeled.

SUBJECT AREA SCHOOL DISTRICTS ON MAP SHEET

TYPE	CODE	NAME
ELM	19400	Aggel Union Elementary School District
ELM	38220	Sulphur Springs Union Elementary School District
SEC	02820	Antelope Valley Union Joint High School District
SEC	42510	William S. Hart Union High School District
UNI	00001	Acton-Agua Dulce Unified School District
UNI	06450	Burbank Unified School District
UNI	15240	Glendale Unified School District
UNI	20130	La Cañada Unified School District
UNI	22710	Los Angeles Unified School District
UNI	29940	Pasadena Unified School District

Key to Adjacent Sheets

2	3	4
5	6	7
9	10	11

Sheet Location within Entity

Sheet 6 of 18 PARENT sheets
Total Sheets: 19 (Index 1; Parent 18; Inset 0)

All legal boundaries and names are as of January 1, 2020. The boundaries shown on this map are for Census Bureau statistical data collection and tabulation purposes only; their depiction and designation for statistical purposes does not constitute a determination of jurisdictional authority or rights of ownership or entitlement.

Geographic Vintage: 2020 Census (reference date: January 1, 2020)
Data Source: U.S. Census Bureau's MAINTIGR database (T4820)
Map Created by Geography Division: December 18, 2020

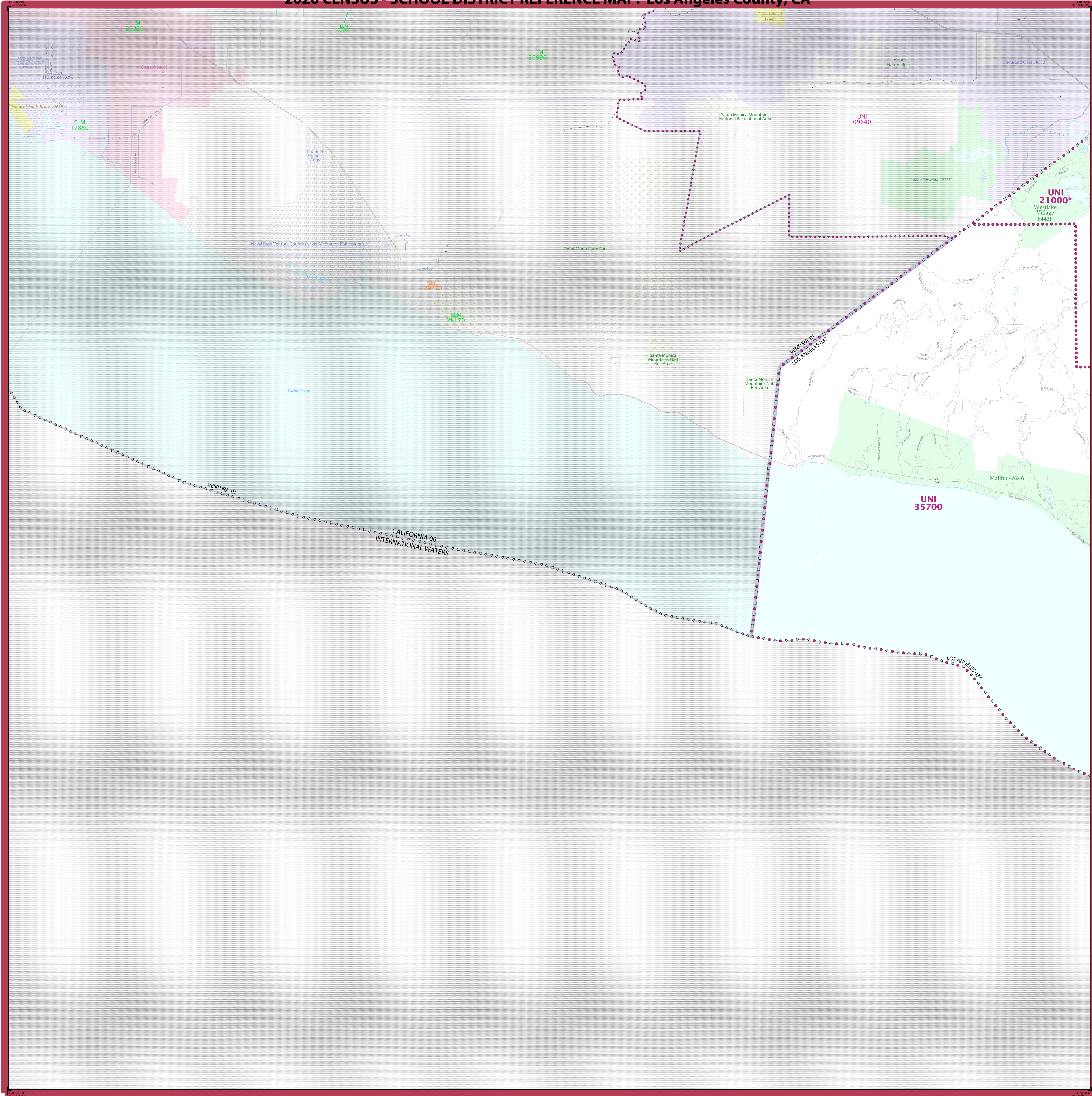
U.S. DEPARTMENT OF COMMERCE U.S. Census Bureau

Projection: Albers Equal Area Conic
Datum: NAD 83
Spheroid: GRS 80
1st Standard Parallel: 34 06 27
2nd Standard Parallel: 40 25 20
Central Meridian: -119 18 20
Latitude of Projection's Origin: 32 31 43
False Easting: 0
False Northing: 0

Scale: 1:500,000
The plotted map scale is 1:500,000



2020 CENSUS - SCHOOL DISTRICT REFERENCE MAP: Los Angeles County, CA



LEGEND

SYMBOL DESCRIPTION	SYMBOL	LABEL STYLE
International	☆☆☆☆☆	CANADA
Federal American Indian Reservation	L'ANSE RES 1880
Off-Reservation Trust Land	T1880
State American Indian Reservation	Tama Res 9400
Alaska Native Regional Corporation	+++++	NANA ANRC 52120
State (or statistically equivalent entity)		NEW YORK 36
County (or statistically equivalent entity)	□□□□□	ERIE 029
Minor Civil Division (MCD) ^{1,2}	○○○○○	Bristol town 07485
Consolidated City	○○○○○	MILFORD 47500
Incorporated Place ^{3,3}	■ ■ ■ ■ ■	Davis 18100
Census Designated Place (CDP) ²	■ ■ ■ ■ ■	Incline Village 35100
Unified School District ⁴	UNI 03370
Secondary School District ⁴	SEC 99965
Elementary School District ⁴	ELM 02220

DESCRIPTION	SYMBOL	DESCRIPTION	SYMBOL
Interstate	—[2]—	Water Body
U.S. Highway	—[2]—	Military
State Highway or State Road	—[2]—	National or State Park, Forest, or Recreation Area
Other Road	Yosemite NP ⁵
Other Road	Inset Area
AWD Trail, Stateway, Alley, Walkway, or Ferry	Inset Area
Railroad	Outside Subject Area
Pipeline or Power Line		
Ridge or Fence		
Nonvisible Boundary or Feature Not Elsewhere Classified		

Where international, state, county, and/or MCD boundaries coincide, the map shows the boundary symbol for only the highest-ranking of these boundaries.

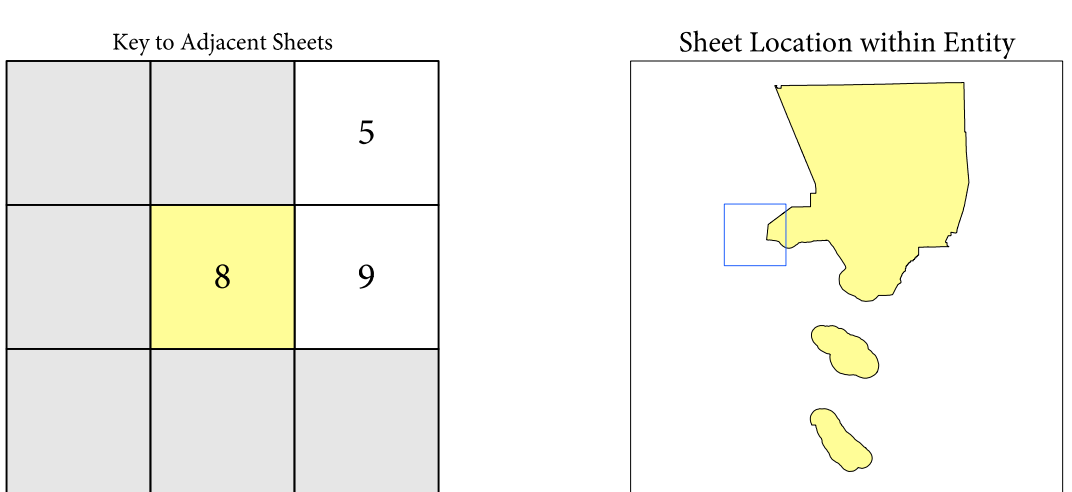
Geographic area names are followed by either their FIPS or census code.

- MCD boundaries are shown in the following states in which some or all MCDs function as general-purpose governmental units: Connecticut, Illinois, Indiana, Kansas, Maine, Massachusetts, Michigan, Minnesota, Missouri, Nebraska, New Hampshire, New Jersey, New York, North Dakota, Ohio, Pennsylvania, Rhode Island, South Dakota, Vermont, and Wisconsin. (Note that Illinois and Nebraska have some counties covered by nongovernmental precincts and Missouri has most counties covered by nongovernmental townships.)
- A " " following an MCD name denotes a false MCD. A " " following a place name indicates that a false MCD exists with the same name and FIPS code as the place; the false MCD label is not shown.
- Place label color corresponds to the place fill color.
- A " " following a label indicates that the school district is in more than one county.

Due to space limitations, some areas and features such as water bodies, parks, and roads may not be labeled.

SUBJECT AREA SCHOOL DISTRICTS ON MAP SHEET

TYPE	CODE	NAME
UNI	21000	Los Virgenes Unified School District
UNI	35700	Santa Monica Malibu Unified School District



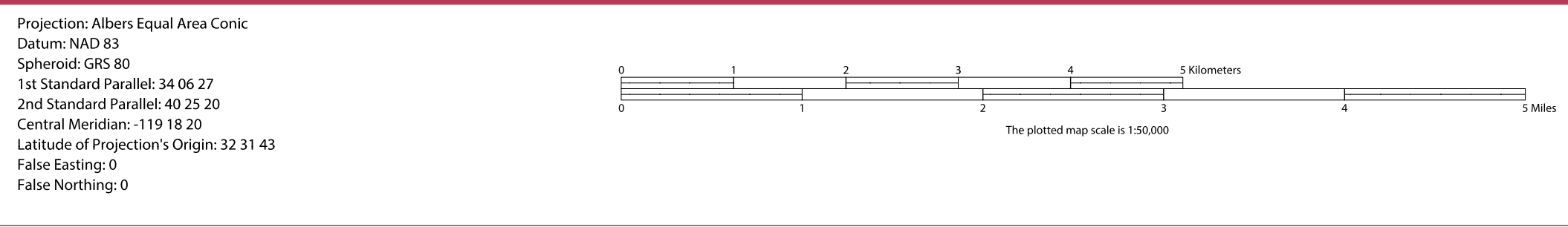
Sheet 8 of 18 PARENT sheets
Total Sheets: 19 (Index 1; Parent 18; Inset 0)

NAME: Los Angeles County (037)
ENTITY TYPE: County or statistically equivalent entity
ST: California (06)

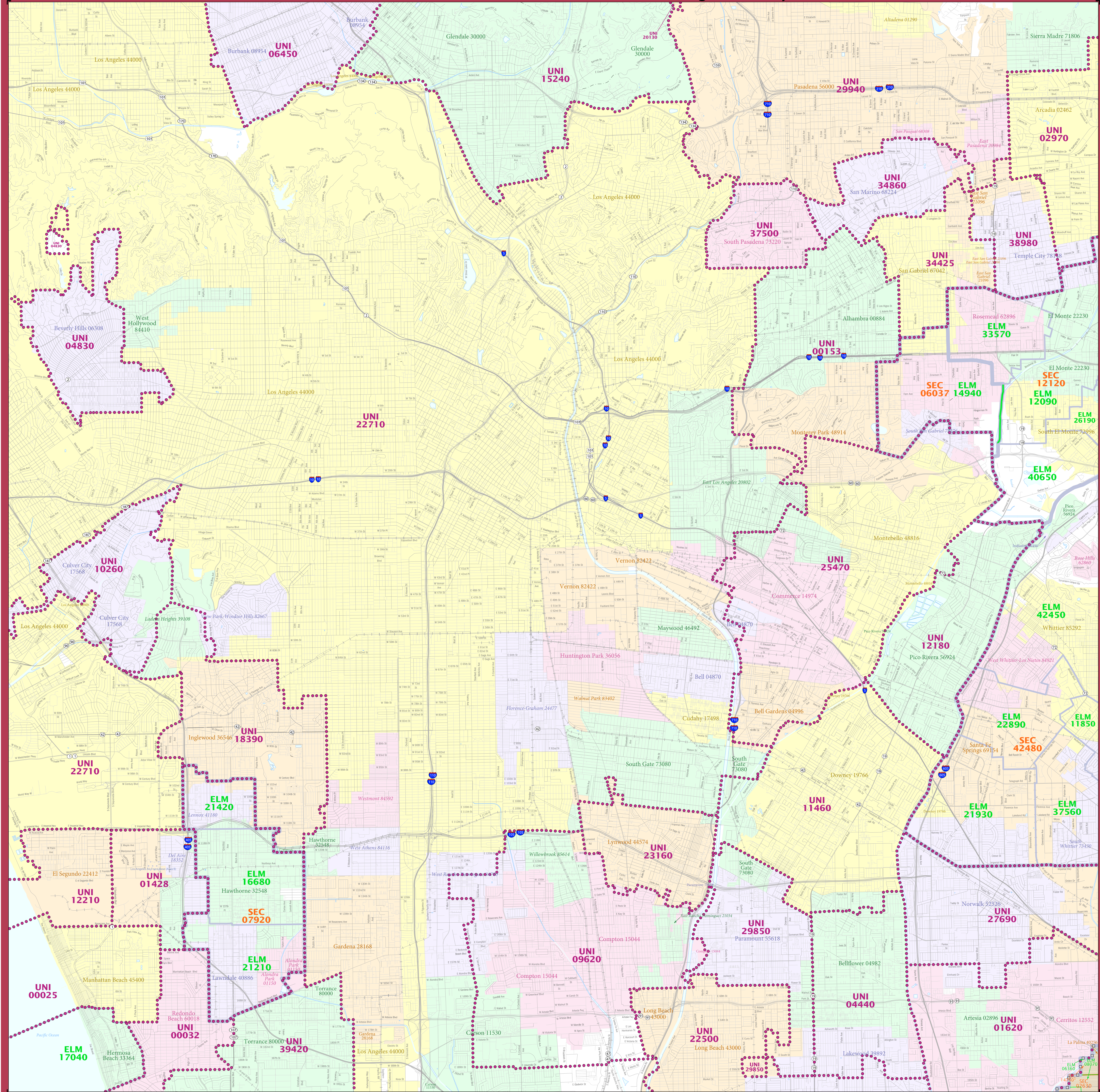
All legal boundaries and names are as of January 1, 2020. The boundaries shown on this map are for Census Bureau statistical data collection and tabulation purposes only; their depiction and designation for statistical purposes does not constitute a determination of jurisdictional authority or rights of ownership or entitlement.

Geographic: Vintage: 2020 Census (reference date: January 1, 2020)
Data Source: U.S. Census Bureau's MAINTIGR database (TAB20)
Map Created by Geography Division: December 18, 2020

U.S. DEPARTMENT OF COMMERCE U.S. Census Bureau



2020 CENSUS - SCHOOL DISTRICT REFERENCE MAP: Los Angeles County, CA



LEGEND

SYMBOL DESCRIPTION	SYMBOL	SYMBOL DESCRIPTION	SYMBOL
International	☆☆☆☆☆	Water Body	
Federal American Indian Reservation		Military	
Off-Reservation Trust Land		National or State Park, Forest, or Recreation Area	
State American Indian Reservation		Other Road	
Alaska Native Regional Corporation	+++++	Other Road	
State (or statistically equivalent entity)		Other Road	
County (or statistically equivalent entity)	□□□□	Other Road	
Minor Civil Division (MCD) ^{1,2}	○○○○○	Other Road	
Consolidated City	○	Other Road	
Incorporated Place ^{3,4}		Other Road	
Census Designated Place (CDP) ²		Other Road	
Unified School District ⁴		Other Road	
Secondary School District ⁴		Other Road	
Elementary School District ⁴		Other Road	

DESCRIPTION	SYMBOL	DESCRIPTION	SYMBOL
Interstate		Water Body	
U.S. Highway		Military	
State Highway or State Road		National or State Park, Forest, or Recreation Area	
Other Road		Yosemite NP	
Other Road		Inset Area	
AWD Trail, Steamer, Alley, Walkway, or Ferry		Inset Area	
Railroad		Inset Area	
Pipeline or Power Line		Inset Area	
Ridge or Fence		Inset Area	
Navigable Boundary or Feature Not Elsewhere Classified		Inset Area	

Where international, state, county, and/or MCD boundaries coincide, the map shows the boundary symbol for only the highest-ranking of these boundaries.

Geographic area names are followed by either their FIPS or census code.

- MCD boundaries are shown in the following states in which some or all MCDs function as general-purpose governmental units: Connecticut, Illinois, Indiana, Kansas, Maine, Massachusetts, Michigan, Minnesota, Missouri, Nebraska, New Hampshire, New Jersey, New York, North Dakota, Ohio, Pennsylvania, Rhode Island, South Dakota, Vermont, and Wisconsin. (Note that Illinois and Nebraska have some counties covered by non-governmental precincts and Missouri has most counties covered by non-governmental townships.)
- A "*" following an MCD name denotes a false MCD. A "*" following a place name indicates that a false MCD exists with the same name and FIPS code as the place; the false MCD label is not shown.
- Place label color corresponds to the place fill color.
- A "*" following a label indicates that the school district is in more than one county.

Due to space limitations, some areas and features such as water bodies, parks, and roads may not be labeled.

SUBJECT AREA SCHOOL DISTRICTS ON MAP SHEET

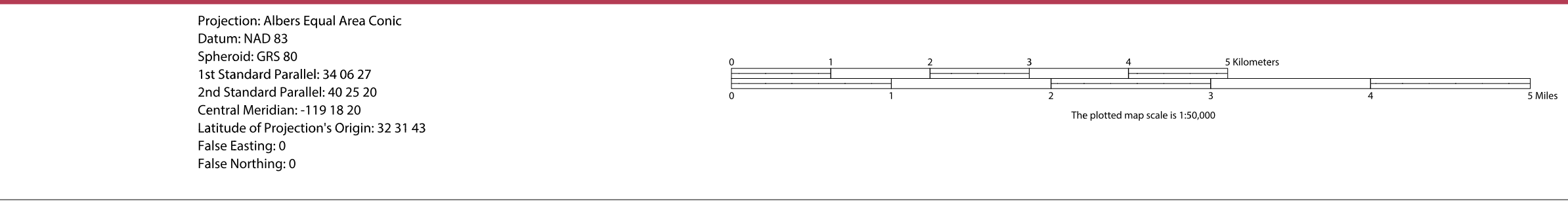
TYPE	CODE	NAME
ELM	1102	East Whittier City Elementary School District
ELM	1209	El Monte City School District
ELM	1492	Garvey Elementary School District
ELM	1660	Hawthorne Elementary School District
ELM	1790	Hermosa Beach City Elementary School District
ELM	2120	Lanuda Elementary School District
ELM	2140	Lemoore Elementary School District
ELM	2190	Little Lake City Elementary School District
ELM	2280	Los Nietos Elementary School District
ELM	2610	Mountain View Elementary School District
ELM	3370	Rosemead Elementary School District
ELM	3750	South Whittier Elementary School District
ELM	4060	Valle Linda Elementary School District
ELM	4250	Whittier City Elementary School District
SEC	0603	Alhambra Unified School District
SEC	0920	Centinela Valley Union High School District
SEC	1210	El Monte Union High School District
SEC	4240	Whittier Union High School District
UNI	0005	Manhattan Beach Unified School District
UNI	0002	Redondo Beach Unified School District
UNI	0015	Alhambra Unified School District
UNI	0128	West Athens Unified School District
UNI	0142	Del Aire Unified School District
UNI	0150	Alhambra Unified School District
UNI	0220	El Segundo Unified School District
UNI	0221	El Segundo Unified School District
UNI	0222	El Segundo Unified School District
UNI	0223	El Segundo Unified School District
UNI	0224	El Segundo Unified School District
UNI	0225	El Segundo Unified School District
UNI	0226	El Segundo Unified School District
UNI	0227	El Segundo Unified School District
UNI	0228	El Segundo Unified School District
UNI	0229	El Segundo Unified School District
UNI	0230	El Segundo Unified School District
UNI	0231	El Segundo Unified School District
UNI	0232	El Segundo Unified School District
UNI	0233	El Segundo Unified School District
UNI	0234	El Segundo Unified School District
UNI	0235	El Segundo Unified School District
UNI	0236	El Segundo Unified School District
UNI	0237	El Segundo Unified School District
UNI	0238	El Segundo Unified School District
UNI	0239	El Segundo Unified School District
UNI	0240	El Segundo Unified School District
UNI	0241	El Segundo Unified School District
UNI	0242	El Segundo Unified School District
UNI	0243	El Segundo Unified School District
UNI	0244	El Segundo Unified School District
UNI	0245	El Segundo Unified School District
UNI	0246	El Segundo Unified School District
UNI	0247	El Segundo Unified School District
UNI	0248	El Segundo Unified School District
UNI	0249	El Segundo Unified School District
UNI	0250	El Segundo Unified School District
UNI	0251	El Segundo Unified School District
UNI	0252	El Segundo Unified School District
UNI	0253	El Segundo Unified School District
UNI	0254	El Segundo Unified School District
UNI	0255	El Segundo Unified School District
UNI	0256	El Segundo Unified School District
UNI	0257	El Segundo Unified School District
UNI	0258	El Segundo Unified School District
UNI	0259	El Segundo Unified School District
UNI	0260	El Segundo Unified School District
UNI	0261	El Segundo Unified School District
UNI	0262	El Segundo Unified School District
UNI	0263	El Segundo Unified School District
UNI	0264	El Segundo Unified School District
UNI	0265	El Segundo Unified School District
UNI	0266	El Segundo Unified School District
UNI	0267	El Segundo Unified School District
UNI	0268	El Segundo Unified School District
UNI	0269	El Segundo Unified School District
UNI	0270	El Segundo Unified School District
UNI	0271	El Segundo Unified School District
UNI	0272	El Segundo Unified School District
UNI	0273	El Segundo Unified School District
UNI	0274	El Segundo Unified School District
UNI	0275	El Segundo Unified School District
UNI	0276	El Segundo Unified School District
UNI	0277	El Segundo Unified School District
UNI	0278	El Segundo Unified School District
UNI	0279	El Segundo Unified School District
UNI	0280	El Segundo Unified School District
UNI	0281	El Segundo Unified School District
UNI	0282	El Segundo Unified School District
UNI	0283	El Segundo Unified School District
UNI	0284	El Segundo Unified School District
UNI	0285	El Segundo Unified School District
UNI	0286	El Segundo Unified School District
UNI	0287	El Segundo Unified School District
UNI	0288	El Segundo Unified School District
UNI	0289	El Segundo Unified School District
UNI	0290	El Segundo Unified School District
UNI	0291	El Segundo Unified School District
UNI	0292	El Segundo Unified School District
UNI	0293	El Segundo Unified School District
UNI	0294	El Segundo Unified School District
UNI	0295	El Segundo Unified School District
UNI	0296	El Segundo Unified School District
UNI	0297	El Segundo Unified School District
UNI	0298	El Segundo Unified School District
UNI	0299	El Segundo Unified School District
UNI	0300	El Segundo Unified School District

Key to Adjacent Sheets		
5	6	7
9	10	11
	12	

Sheet Location within Entry

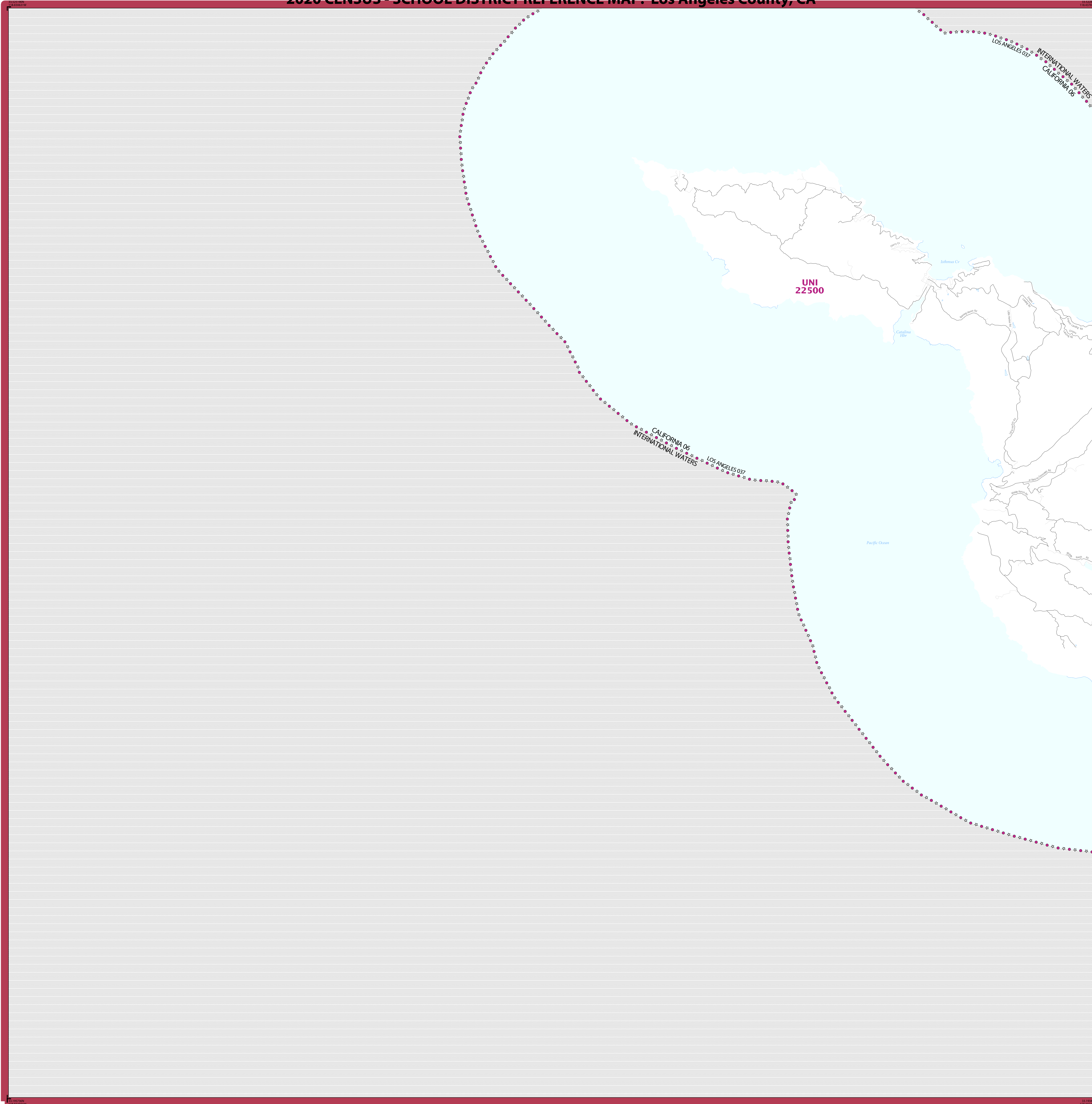
All legal boundaries and names are as of January 1, 2020. The boundaries shown on this map are for Census Bureau statistical data collection and tabulation purposes only; their depiction and designation for statistical purposes does not constitute a determination of jurisdictional authority or rights of ownership or entitlement.

Geographic: Vintage: 2020 Census (reference date: January 1, 2020)
 Data Source: U.S. Census Bureau's MA7/TIGER database (14820)
 Map Created by Geography Division: December 18, 2020



NAME: Los Angeles County (037)
 ENTITY TYPE: County or statistically equivalent entity
 ST: California (06)

2020 CENSUS - SCHOOL DISTRICT REFERENCE MAP: Los Angeles County, CA



LEGEND

SYMBOL DESCRIPTION	SYMBOL	LABEL STYLE
International	☆☆☆☆☆	CANADA
Federal American Indian Reservation	■ ■ ■ ■ ■	L'ANSE RES 1880
Off-Reservation Trust Land	■ ■ ■ ■ ■	T1880
State American Indian Reservation	■ ■ ■ ■ ■	Tama Res 9400
Alaska Native Regional Corporation	+++++	NANA ANRC 52120
State (or statistically equivalent entity)		NEW YORK 36
County (or statistically equivalent entity)	□ □ □ □ □	ERIE 029
Minor Civil Division (MCD) ^{1,2}	○ ○ ○ ○ ○	Bristol town 07485
Consolidated City	○ ○ ○ ○ ○	MILFORD 47500
Incorporated Place ^{3,3}	■ ■ ■ ■ ■	Davis 18100
Census Designated Place (CDP) ³	■ ■ ■ ■ ■	Inline Village 35100
Unified School District ⁴	● ● ● ● ●	UNI 22500
Secondary School District ⁴	— — — — —	SEC 99965
Elementary School District ⁴	— — — — —	ELM 02220

DESCRIPTION	SYMBOL	DESCRIPTION	SYMBOL
Interstate	— 2 —	Water Body	Pleasant Lake
U.S. Highway	— 2 —	Military	Fort Belvoir
State Highway or State Road	— 2 —	National or State Park, Forest, or Recreation Area	Yosemite NP
Other Road	— — — — —	Inset Area	A1
4WD Trail, Stearway, Alley, Walkway, or Ferry	— — — — —	Outside Subject Area	
Railroad	— + — + — + —		
Pipeline or Power Line	— + — + — + —		
Ridge or Fence	— + — + — + —		
Nonvisible Boundary or Feature Not Elsewhere Classified	— + — + — + —		

Where international, state, county, and/or MCD boundaries coincide, the map shows the boundary symbol for only the highest-ranking of these boundaries.

Geographic area names are followed by either their FIPS or census code.

1 MCD boundaries are shown in the following states in which some or all MCDs function as general-purpose governmental units: Connecticut, Illinois, Indiana, Kansas, Maine, Massachusetts, Michigan, Minnesota, Missouri, Nebraska, New Hampshire, New Jersey, New York, North Dakota, Ohio, Pennsylvania, Rhode Island, South Dakota, Vermont, and Wisconsin. (Note that Illinois and Nebraska have some counties covered by nongovernmental precincts and Missouri has most counties covered by nongovernmental townships.)

2 A " " following an MCD name denotes a false MCD. A " " following a place name indicates that a false MCD exists with the same name and FIPS code as the place; the false MCD label is not shown.

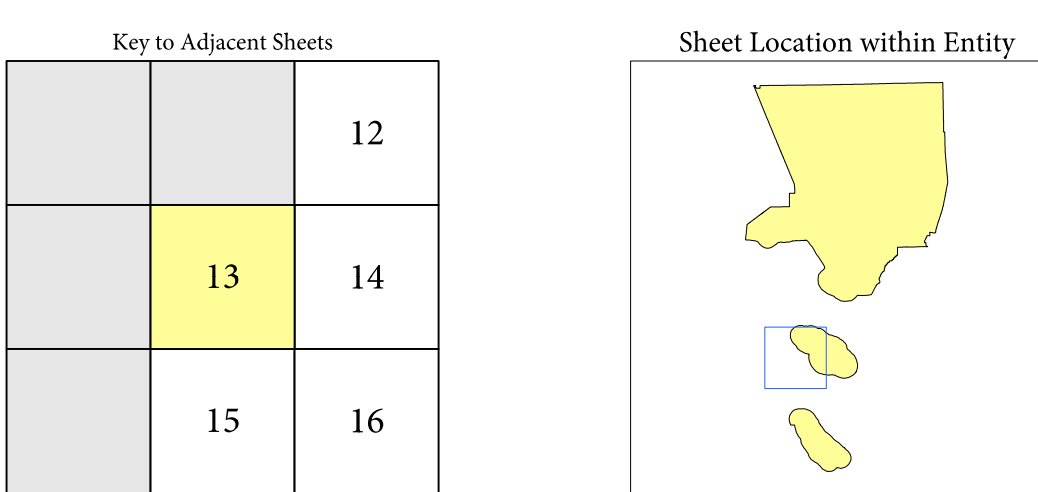
3 Place label color corresponds to the place fill color.

4 A " " following a label indicates that the school district is in more than one county.

Due to space limitations, some areas and features such as water bodies, parks, and roads may not be labeled.

SUBJECT AREA SCHOOL DISTRICTS ON MAP SHEET

TYPE	CODE	NAME
UNI	22500	Long Beach Unified School District

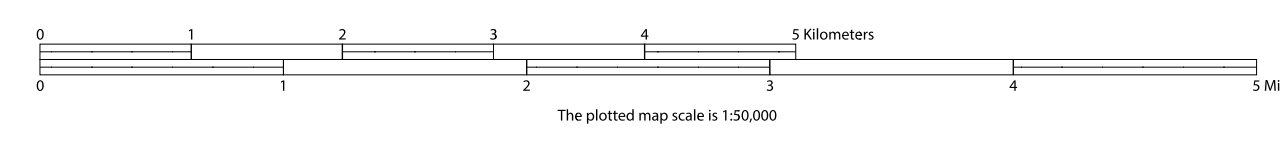


All legal boundaries and names are as of January 1, 2020. The boundaries shown on this map are for Census Bureau statistical data collection and tabulation purposes only; their depiction and designation for statistical purposes does not constitute a determination of jurisdictional authority or rights of ownership or entitlement.

Geographic Vintage: 2020 Census (reference date: January 1, 2020)
 Data Source: U.S. Census Bureau's MAINTIGR database (TAB20)
 Map Created by Geography Division: December 18, 2020

U.S. DEPARTMENT OF COMMERCE U.S. Census Bureau

Projection: Albers Equal Area Conic
 Datum: NAD 83
 Spheroid: GRS 80
 1st Standard Parallel: 34 06 27
 2nd Standard Parallel: 40 25 20
 Central Meridian: -119 18 20
 Latitude of Projection's Origin: 32 31 43
 False Easting: 0
 False Northing: 0

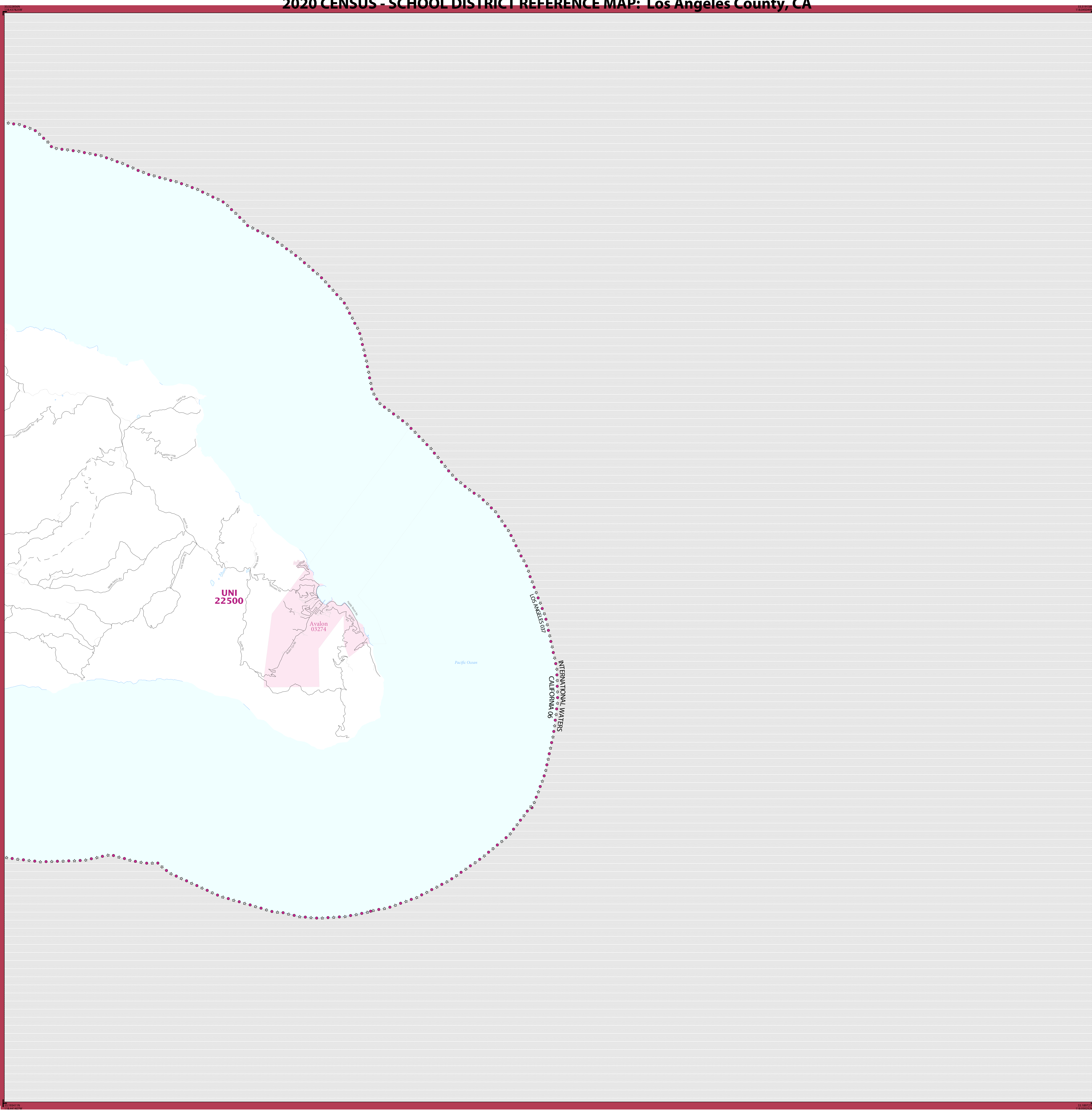


Sheet 13 of 18 PARENT sheets
 Total Sheets: 19 (Index 1; Parent 18; Inset 0)

NAME: Los Angeles County (037)
 ENTITY TYPE: County or statistically equivalent entity
 ST: California (06)

2020 CENSUS SD REF MAP (PARENT)
 Sheet ID: 251506037013

2020 CENSUS - SCHOOL DISTRICT REFERENCE MAP: Los Angeles County, CA



LEGEND

SYMBOL DESCRIPTION	SYMBOL	LABEL STYLE
International	☆☆☆☆☆	CANADA
Federal American Indian Reservation	■ ■ ■ ■ ■	L'ANSE RES 1880
Off-Reservation Trust Land	■ ■ ■ ■ ■	T1880
State American Indian Reservation	■ ■ ■ ■ ■	Tama Res 9400
Alaska Native Regional Corporation	+++++	NANA ANRC 52120
State (or statistically equivalent entity)	▨ ▨ ▨ ▨ ▨	NEW YORK 36
County (or statistically equivalent entity)	□ □ □ □ □	ERIE 029
Minor Civil Division (MCD) ^{1,2}	○ ○ ○ ○ ○	Bristol town 07485
Consolidated City	○ ○ ○ ○ ○	MILFORD 47500
Incorporated Place ^{3,3}	■ ■ ■ ■ ■	Davis 18100
Census Designated Place (CDP) ³	■ ■ ■ ■ ■	Inline Village 35100
Unified School District ⁴	● ● ● ● ●	UNI 03370
Secondary School District ⁴	— — — — —	SEC 99965
Elementary School District ⁴	— — — — —	ELM 02220

DESCRIPTION	SYMBOL	DESCRIPTION	SYMBOL
Interstate	—(2)—	Water Body	Pleasant Lake
U.S. Highway	—(2)—	Military	Port Belvoir
State Highway or State Road	—(2)—	National or State Park, Forest, or Recreation Area	Yosemite NP
Other Road	—(2)—	Inset Area	A1
4WD Trail, Steepway, Alley, Walkway, or Ferry	—(2)—	Outside Subject Area	
Railroad	—(2)—		
Pipeline or Power Line	—(2)—		
Ridge or Fence	—(2)—		
Nonvisible Boundary or Feature Not Elsewhere Classified	—(2)—		

Where international, state, county, and/or MCD boundaries coincide, the map shows the boundary symbol for only the highest-ranking of these boundaries.

Geographic area names are followed by either their FIPS or census code.

1 MCD boundaries are shown in the following states in which some or all MCDs function as general-purpose governmental units: Connecticut, Illinois, Indiana, Kansas, Maine, Massachusetts, Michigan, Minnesota, Missouri, Nebraska, New Hampshire, New Jersey, New York, North Dakota, Ohio, Pennsylvania, Rhode Island, South Dakota, Vermont, and Wisconsin. (Note that Illinois and Nebraska have some counties covered by nongovernmental precincts and Missouri has most counties covered by nongovernmental townships.)

2 A " " following an MCD name denotes a false MCD. A " " following a place name indicates that a false MCD exists with the same name and FIPS code as the place; the false MCD label is not shown.

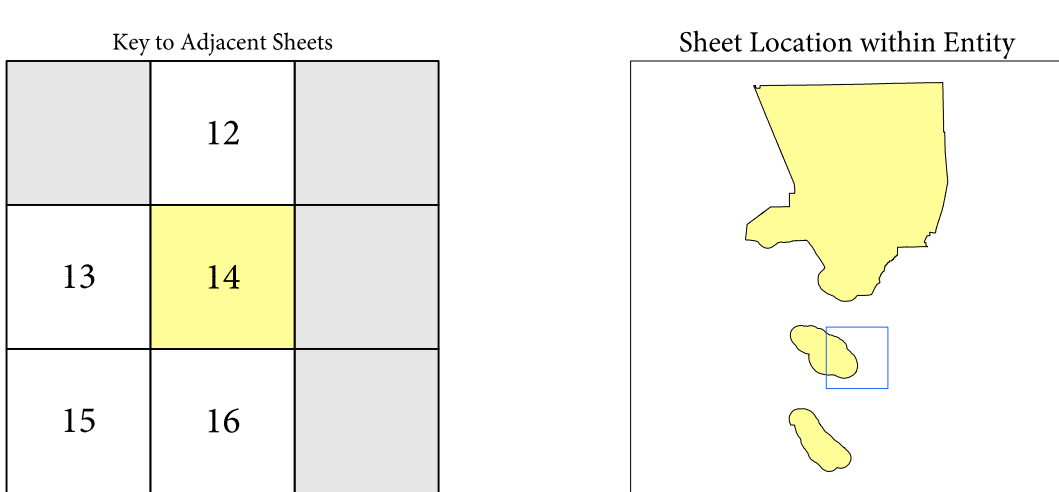
3 Place label color corresponds to the place fill color.

4 A " " following a label indicates that the school district is in more than one county.

Due to space limitations, some areas and features such as water bodies, parks, and roads may not be labeled.

SUBJECT AREA SCHOOL DISTRICTS ON MAP SHEET

TYPE	CODE	NAME
UNI	22500	Long Beach Unified School District



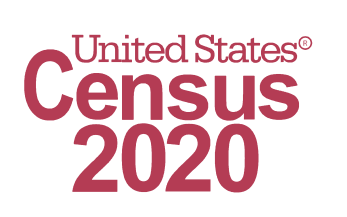
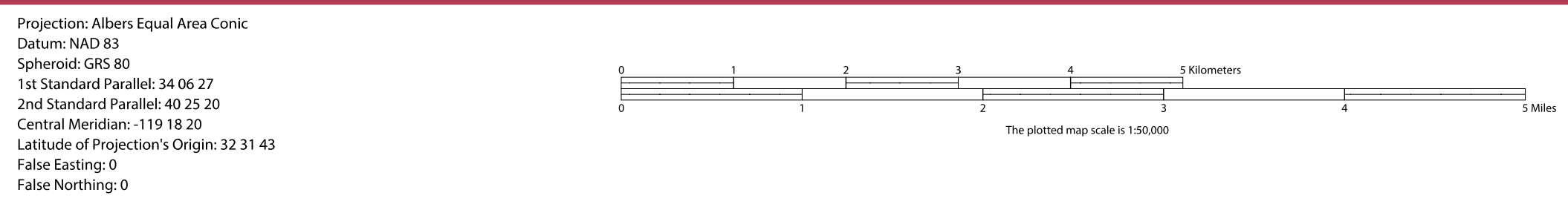
Sheet 14 of 18 PARENT sheets
 Total Sheets: 19 (Index 1; Parent 18; Inset 0)

NAME: Los Angeles County (037)
 ENTITY TYPE: County or statistically equivalent entity
 ST: California (06)

All legal boundaries and names are as of January 1, 2020. The boundaries shown on this map are for Census Bureau statistical data collection and tabulation purposes only; their depiction and designation for statistical purposes does not constitute a determination of jurisdictional authority or rights of ownership or entitlement.

Geographic Vintage: 2020 Census (reference date: January 1, 2020)
 Data Source: U.S. Census Bureau's MAINTIGR database (TAB20)
 Map Created by Geography Division: December 18, 2020

U.S. DEPARTMENT OF COMMERCE U.S. Census Bureau



2020 CENSUS SD REF MAP (PARENT)
 Sheet ID: 2515060314

2020 CENSUS - SCHOOL DISTRICT REFERENCE MAP: Los Angeles County, CA

LEGEND		
SYMBOL DESCRIPTION	SYMBOL	LABEL STYLE
International	☆☆☆☆☆	CANADA
Federal American Indian Reservation	L'ANSE RES 1880
Off-Reservation Trust Land	T1880
State American Indian Reservation	Tama Res 9400
Alaska Native Regional Corporation	+++++	NANA ANRC 52120
State (or statistically equivalent entity)		NEW YORK 36
County (or statistically equivalent entity)		ERIE 029
Minor Civil Division (MCD) ^{1,2}	○○○○○	Bristol town 07485
Consolidated City	○○○○○	MILFORD 47500
Incorporated Place ^{3,3}	Davis 18100
Census Designated Place (CDP) ³	Incline Village 35100
Unified School District ⁴	UNI 03370
Secondary School District ⁴	SEC 99965
Elementary School District ⁴	ELM 02220

DESCRIPTION	SYMBOL	DESCRIPTION	SYMBOL
Interstate	—[2]—	Water Body	Pleasant Lake
U.S. Highway	—[2]—	Military	Port Belvoir
State Highway or State Road	—[2]—	National or State Park, Forest, or Recreation Area	Yosemite NP
Other Road	—[2]—	Inset Area	A1
4WD Trail, Stateway, Alley, Walkway, or Ferry	—[2]—	Outside Subject Area	
Railroad	—[2]—		
Pipeline or Power Line	—[2]—		
Ridge or Fence	—[2]—		
Nonlabelable Boundary or Feature Not Elsewhere Classified	—[2]—		

Where international, state, county, and/or MCD boundaries coincide, the map shows the boundary symbol for only the highest-ranking of these boundaries.

Geographic area names are followed by either their FIPS or census code.

1 MCD boundaries are shown in the following states in which some or all MCDs function as general-purpose governmental units: Connecticut, Illinois, Indiana, Kansas, Maine, Massachusetts, Michigan, Minnesota, Missouri, Nebraska, New Hampshire, New Jersey, New York, North Dakota, Ohio, Pennsylvania, Rhode Island, South Dakota, Vermont, and Wisconsin. (Note that Illinois and Nebraska have some counties covered by nongovernmental precincts and Missouri has most counties covered by nongovernmental townships.)

2 A " " following an MCD name denotes a false MCD. A " " following a place name indicates that a false MCD exists with the same name and FIPS code as the place; the false MCD label is not shown.

3 Place label color corresponds to the place fill color.

4 A " " following a label indicates that the school district is in more than one county.

Due to space limitations, some areas and features such as water bodies, parks, and roads may not be labeled.

SUBJECT AREA SCHOOL DISTRICTS ON MAP SHEET		
TYPE	CODE	NAME
UNI	22710	Los Angeles Unified School District

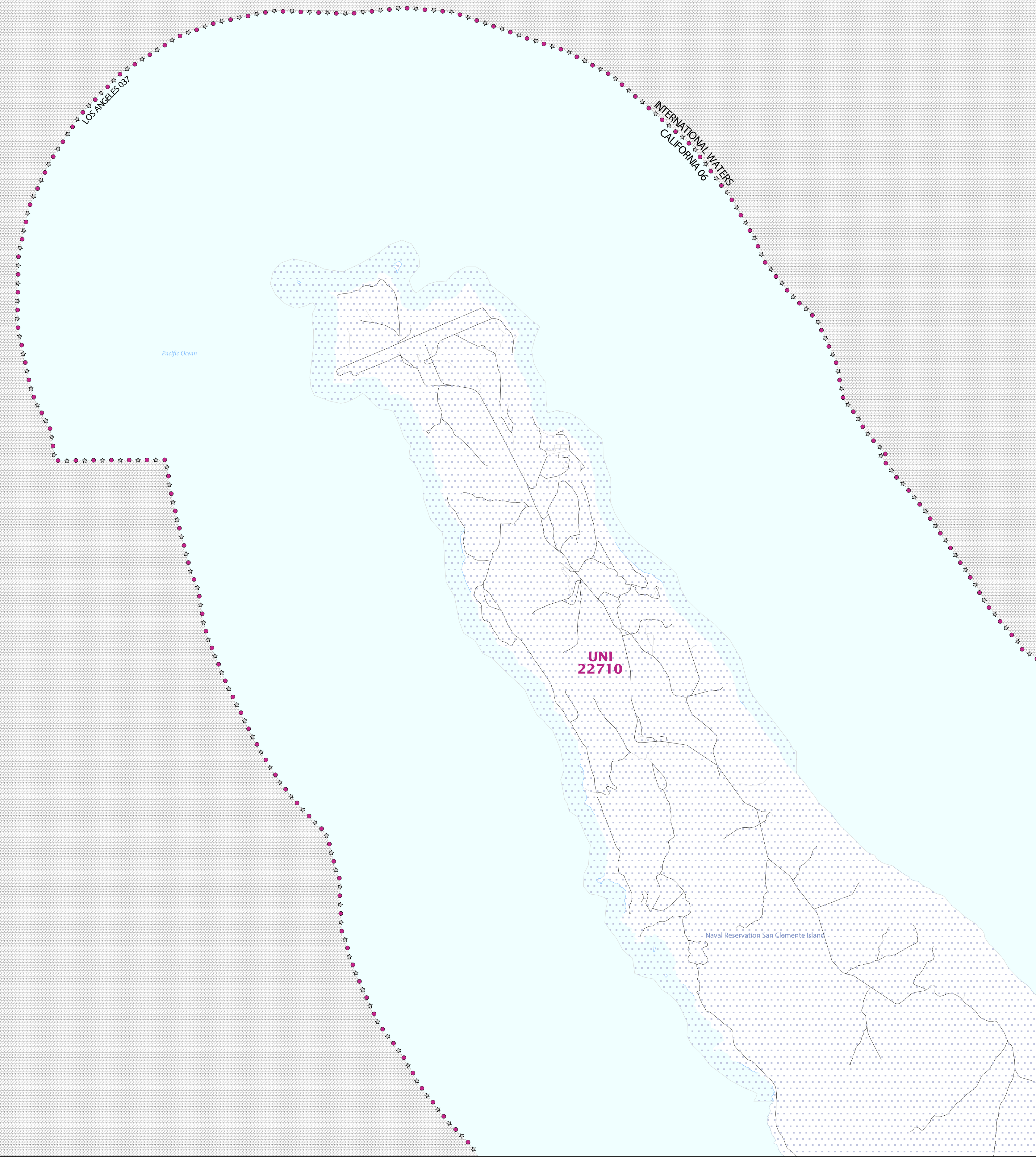
Key to Adjacent Sheets		
	13	14
	15	16
	17	18

Sheet Location within Entity	

Sheet 15 of 18 PARENT sheets
Total Sheets: 19 (Index 1; Parent 18; Inset 0)

NAME: Los Angeles County (037)
ENTITY TYPE: County or statistically equivalent entity
ST: California (06)

2020 CENSUS SD REF MAP (PARENT)
Sheet ID: 25150603015

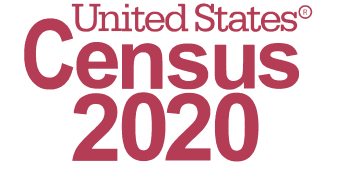
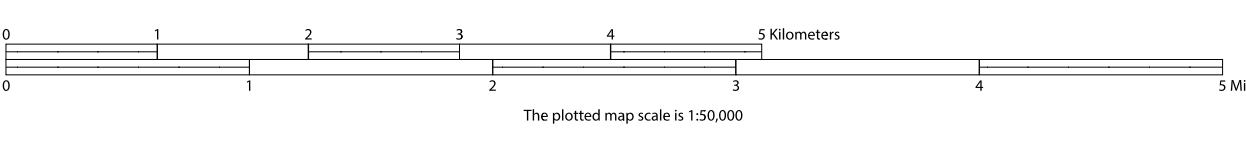


All legal boundaries and names are as of January 1, 2020. The boundaries shown on this map are for Census Bureau statistical data collection and tabulation purposes only; their depiction and designation for statistical purposes does not constitute a determination of jurisdictional authority or rights of ownership or entitlement.

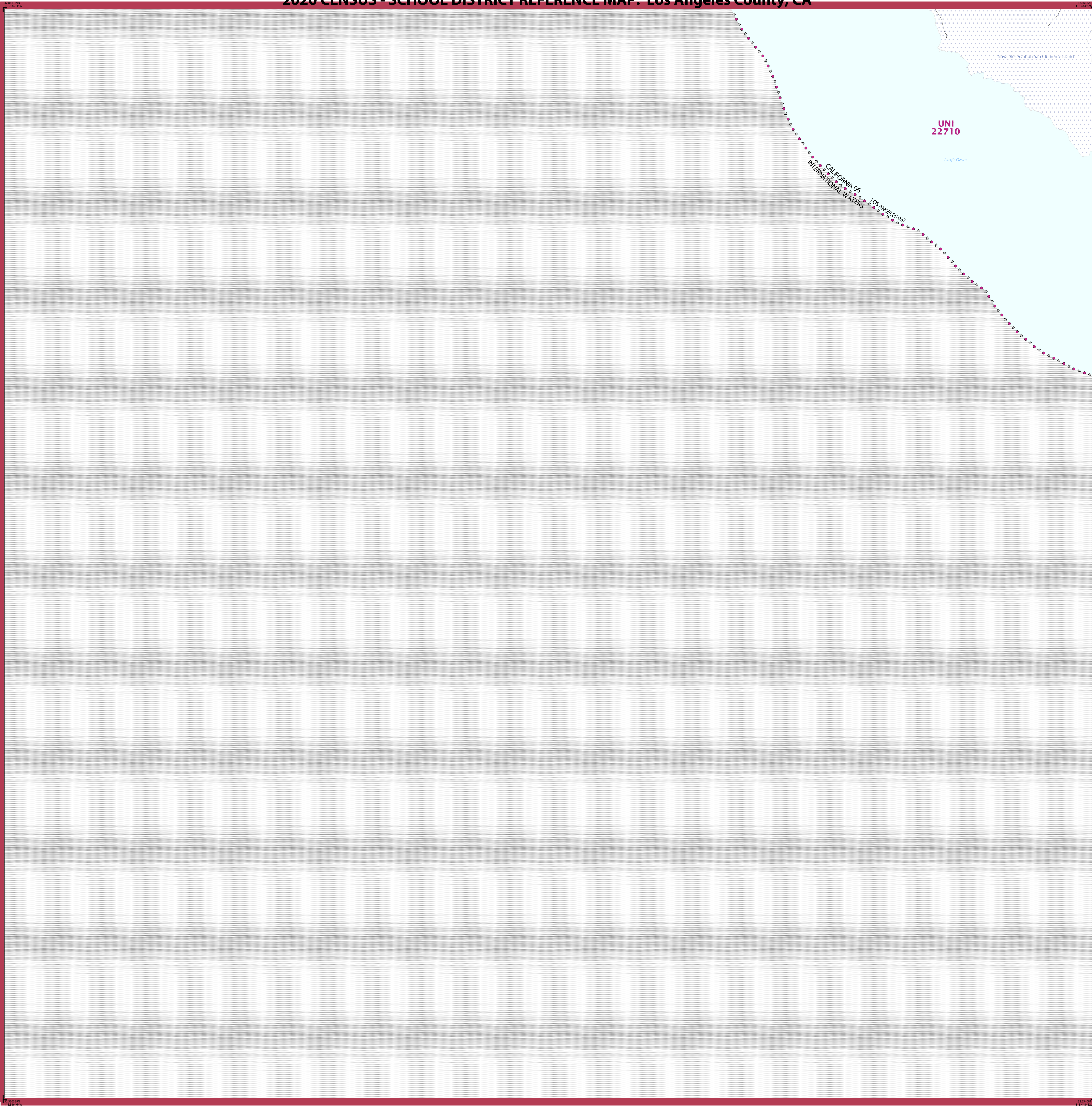
Geographic Vintage: 2020 Census (reference date: January 1, 2020)
Data Source: U.S. Census Bureau's MAINTIGR database (TAB20)
Map Created by Geography Division: December 18, 2020

U.S. DEPARTMENT OF COMMERCE U.S. Census Bureau

Projection: Albers Equal Area Conic
Datum: NAD 83
Spheroid: GRS 80
1st Standard Parallel: 34 06 27
2nd Standard Parallel: 40 25 20
Central Meridian: -119 18 20
Latitude of Projection's Origin: 32 31 43
False Easting: 0
False Northing: 0



2020 CENSUS - SCHOOL DISTRICT REFERENCE MAP: Los Angeles County, CA



LEGEND

SYMBOL DESCRIPTION	SYMBOL	LABEL STYLE
International	☆☆☆☆☆	CANADA
Federal American Indian Reservation	L'ANSE RES 1880
Off-Reservation Trust Land	T1880
State American Indian Reservation	Tama Res 9400
Alaska Native Regional Corporation	+++++	NANA ANRC 52120
State (or statistically equivalent entity)		NEW YORK 36
County (or statistically equivalent entity)		ERIE 029
Minor Civil Division (MCD) ^{1,2}	○○○○○	Bristol town 07485
Consolidated City	○○○○○	MILFORD 47500
Incorporated Place ^{3,3}	Davis 18100
Census Designated Place (CDP) ³	Inline Village 35100
Unified School District ⁴	UNI 03370
Secondary School District ⁴	SEC 99965
Elementary School District ⁴	ELM 02220

DESCRIPTION	SYMBOL	DESCRIPTION	SYMBOL
Interstate	—(2)—	Water Body	Pleasant Lake
U.S. Highway	—(2)—	Military	Port Belvoir
State Highway or State Road	—(1)—	National or State Park, Forest, or Recreation Area	Yosemite NP
Other Road	—(1)—	Inset Area	A1
4WD Trail, Stateway, Alley, Walkway, or Ferry	—(1)—	Outside Subject Area	
Railroad	—+—+—+—		
Pipeline or Power Line	—+—+—+—		
Ridge or Fence	—+—+—+—		
Nonvisible Boundary or Feature Not Elsewhere Classified	—+—+—+—		

Where international, state, county, and/or MCD boundaries coincide, the map shows the boundary symbol for only the highest-ranking of these boundaries.

Geographic area names are followed by either their FIPS or census code.

1 MCD boundaries are shown in the following states in which some or all MCDs function as general-purpose governmental units: Connecticut, Illinois, Indiana, Kansas, Maine, Massachusetts, Michigan, Minnesota, Missouri, Nebraska, New Hampshire, New Jersey, New York, North Dakota, Ohio, Pennsylvania, Rhode Island, South Dakota, Vermont, and Wisconsin. (Note that Illinois and Nebraska have some counties covered by nongovernmental precincts and Missouri has most counties covered by nongovernmental townships.)

2 A ' ' following an MCD name denotes a false MCD. A ' ' following a place name indicates that a false MCD exists with the same name and FIPS code as the place; the false MCD label is not shown.

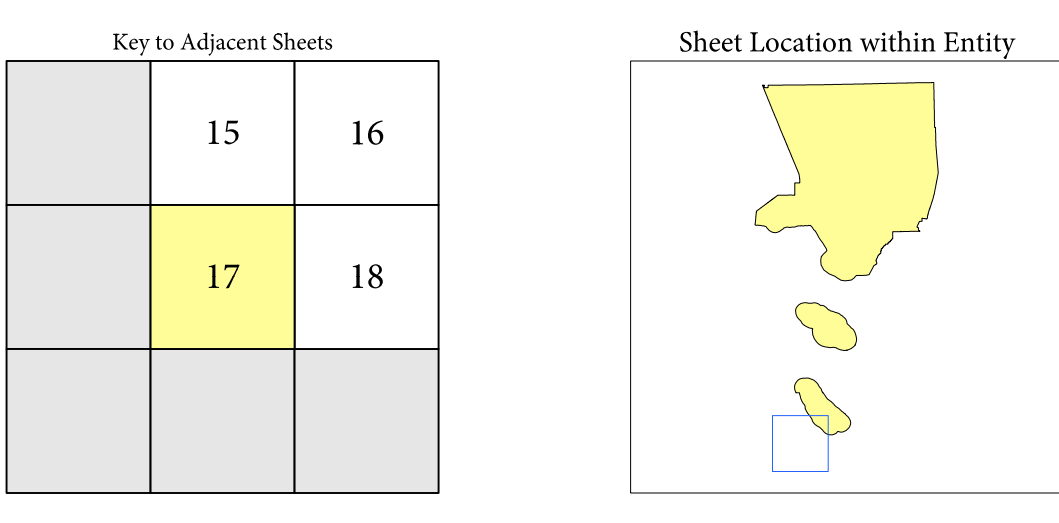
3 Place label color corresponds to the place fill color.

4 A ' ' following a label indicates that the school district is in more than one county.

Due to space limitations, some areas and features such as water bodies, parks, and roads may not be labeled.

SUBJECT AREA SCHOOL DISTRICTS ON MAP SHEET

TYPE	CODE	NAME
UNI	22710	Los Angeles Unified School District



Sheet 17 of 18 PARENT sheets
Total Sheets: 19 (Index 1; Parent 18; Inset 0)

All legal boundaries and names are as of January 1, 2020. The boundaries shown on this map are for Census Bureau statistical data collection and tabulation purposes only; their depiction and designation for statistical purposes does not constitute a determination of jurisdictional authority or rights of ownership or entitlement.

Geographic Vintage: 2020 Census (reference date: January 1, 2020)
Data Source: U.S. Census Bureau's MAINTIGR database (TAB20)
Map Created by Geography Division: December 18, 2020

U.S. DEPARTMENT OF COMMERCE U.S. Census Bureau

Projection: Albers Equal Area Conic
Datum: NAD 83
Spheroid: GRS 80
1st Standard Parallel: 34 06 27
2nd Standard Parallel: 40 25 20
Central Meridian: -119 18 20
Latitude of Projection's Origin: 32 31 43
False Easting: 0
False Northing: 0

