

► Table of Contents

| | |
|--|----------------|
| Table of Contents | 1 |
| Source of Data | 2 |
| Definition of Terms | 3 |
| State of Florida Summary | 4 |
| Florida Traffic Trends | 6 |
| When Crashes Occur | 7 - 10 |
| Traffic Crashes by Month | 7 |
| Traffic Crashes by Day of Week | 8 |
| Traffic Crashes by Time of Day | 9 |
| Holiday Traffic Fatalities | 10 |
| Persons Involved in Crashes | 11 - 20 |
| Sex of Drivers Involved in Crashes | 11 |
| Age of Drivers Involved in Crashes | 12 |
| Selected Age Groups | 13 |
| Safety Equipment Use | 14 |
| Child Safety Restraint Use | 15 |
| 1985 - 1994 Motorcyclist Fatality Trends | 16 |
| 1985 - 1994 Bicyclist Fatality Trend | 17 |
| 1985 - 1994 Pedestrian Fatality Trends | 18 |
| Pedestrian Crash Rates by Sex and Age | 19 |
| Pedestrian Behavior in Crashes | 20 |
| Causal Factors in Crashes | 21 - 23 |
| Contributing Causes for Drivers in Crashes | 21 |
| Alcohol-Related Crash Trends -- 1990 - 1994 | 22 |
| Reported Alcohol And Drug Use in Traffic Crashes | 23 |
| County/City Data | 24 - 32 |
| Fatality Trend by County | 25 |
| Crash Trend by County | 26 |
| Alcohol-Related Fatalities by County | 27 |
| Alcohol-Related Crashes by County | 28 |
| Alcohol-Related Crashes by City | 29 - 32 |

The information contained in this Traffic Crash Data booklet is extracted from law enforcement agency long-form reports of traffic crashes. A law enforcement officer must submit a long-form crash report when investigating:

Motor vehicle crashes resulting in death or personal injury, or

Motor vehicle crashes in which one or more of the following conditions occur:

Leaving the scene involving damage to an attended vehicle or property (Section 316.061 (1), F.S.);

Driving while under the influence of alcoholic beverages, chemical substances, or controlled substances or with unlawful blood alcohol level (Section 316.193, F.S.).

An investigating officer *may* report other traffic crashes on the long-form. In particular, applicable statutes specify an officer's discretion to submit a long-form report in crashes where a vehicle is rendered inoperable to the degree that a wrecker is required to remove it from traffic.

Statutory revisions in 1983 and 1989 had the effect of reducing the number of non-injury crashes required to be reported to the Department. Any presentation of historical data that includes such crashes, such as total traffic crash counts, will reflect these changes. Data on traffic crashes involving death, injury, or other criteria for law enforcement long-form reports as outlined above are not affected.

Please note:

All 1992 data in this publication have been updated from preliminary figures published in the Department of Highway Safety and Motor Vehicles *Traffic Crash Data Book, 1992*. Figures from the 1992 publication should not be used for year-to-year comparisons.

The following terms are defined as they apply to the crash data presented in this publication. These definitions may differ from legal or other uses of the same terms.

- Alcohol-related traffic crash-** A crash involving a driver and/or pedestrian for whom alcohol use was reported (does not presume intoxication).
- Bicycle-** A vehicle propelled solely by human power or a motorized bicycle propelled by a combination of human power and an electric helper motor rated at not more than 200 watts (this term does not include a vehicle with a seat height of no more than 25 inches from the ground when the seat is adjusted to its highest position, or a scooter or similar device).
- Bicyclist-** The driver of a bicycle. A passenger on a bicycle is considered a vehicle passenger.
- Driver-** Unless otherwise indicated, the operator of a motor vehicle or bicycle. Driver data typically exclude uninjured persons presumed to have been operating hit-and-run, phantom, or properly parked vehicles.
- Fatal traffic crash-** A traffic crash that results in one or more fatalities within ninety days of occurrence.
- Moped-** A motor-powered cycle with a pedal-activated motor and 2 brake horsepower maximum.
- Motor vehicle-** Any motorized vehicle not operating on rails.
- Motorcycle-** A motor vehicle, with a seat or saddle for the driver's use, traveling with no more than three wheels in contact with the ground, excluding a tractor or a moped.
- Motorcyclist-** The driver of a motorcycle. A passenger on a motorcycle is considered a vehicle passenger.
- Traffic crash-** A crash involving at least one motor vehicle on a trafficway that is open to the public. The term "crash" in this publication is equivalent to the term "accident" as used in previous editions and standard summary tables.
- Traffic fatality-** The death of a person as a direct result of a traffic crash within ninety days of the crash occurrence.
- Vehicle occupant-** Drivers and passengers of automobiles, vans, trucks, buses, and motor homes.

ALL CRASHES

Compared to 1993, there was a 3.6% increase in traffic crashes investigated and reported.

| | |
|-------------------------------|---------|
| Traffic crashes | 206,183 |
| Drivers involved | 325,232 |
| Average crashes per day | 565 |

FATAL CRASHES AND FATALITIES

Compared to 1993, there was a 0.1% increase in traffic fatalities.

| | |
|---------------------|-------|
| Fatalities | 2,722 |
| Fatal crashes | 2,450 |

INJURY CRASHES

Compared to 1993, there was a 5.2% increase in traffic injuries.

| | |
|----------------------|---------|
| Injuries | 223,458 |
| Injury crashes | 135,187 |

ALCOHOL-RELATED CRASHES AND FATALITIES

35.3% of traffic fatalities and 12.1% of traffic crashes were alcohol-related.

| | |
|--------------------------------------|--------|
| Alcohol-related fatalities | 961 |
| Alcohol-related injuries | 23,556 |
| Alcohol-related crashes | 24,987 |
| Alcohol-related fatal crashes | 857 |
| Alcohol-related injury crashes | 14,056 |

CRASH ENVIRONMENTS

58.7% of all crashes occurred in primarily business areas, while 60.0% of fatal crashes were in open country or residential areas.

| | |
|--|---------|
| Crashes in Business Areas | 121,050 |
| Crashes in Residential Areas | 63,140 |
| Crashes in Open Country | 21,993 |
| Fatal Crashes in Business Areas | 979 |
| Fatal Crashes in Residential Areas | 694 |
| Fatal Crashes in Open Country | 777 |

SAFETY EQUIPMENT

79.3% of motor vehicle occupants, bicyclists, and motorcyclists in crashes were reported using safety equipment while 20.4% were reported not using safety equipment. Safety equipment use was not reported for 0.2%.

| | |
|---|---------|
| Vehicle Occupants Using Safety Belts | 384,148 |
| Vehicle Occupants Using Child Safety Seats | 9,718 |
| Vehicle Occupants Using Air Bags (Only) | 926 |
| Vehicle Occupants Not Using Safety Equipment..... | 94,452 |
| Bicyclists with Safety Helmet | 355 |
| Bicyclists without Safety Helmet | 7,172 |
| Motorcyclists with Safety Helmet | 3,734 |
| Motorcyclists without Safety Helmet | 1,140 |
| Safety Equipment Use Not Stated | 1,192 |

PEDESTRIAN CRASHES

19.4% of all traffic fatalities were pedestrians.

| | |
|---|-------|
| Pedestrians killed | 528 |
| Pedestrians injured | 8,309 |
| Pedestrian crashes (by First Harmful Event) | 7,712 |

BICYCLE CRASHES

4.5% of all traffic fatalities were bicycle drivers.

| | |
|--|-------|
| Bicycle drivers killed | 123 |
| Bicycle drivers injured | 6,957 |
| Bicycle crashes (by First Harmful Event) | 5,703 |

MOTORCYCLE CRASHES

5.6% of all traffic fatalities were motorcycle drivers.

| | |
|-----------------------------|-------|
| Motorcyclists killed..... | 152 |
| Motorcyclists injured | 4,399 |

| YEAR | LICENSED DRIVERS | REGISTERED VEHICLES | VEHICLE MILES* | CRASHES | NON-FATAL INJURIES | DEATHS | MILEAGE DEATH RATE** |
|------|-------------------------|-------------------------|----------------|---------|--------------------|--------|----------------------|
| 1975 | 6,320,822 | 6,995,683 | 61,715 | 283,086 | 154,728 | 2,040 | 3.3 |
| 1976 | 6,384,149 | 7,217,926 | 64,492 | 270,659 | 152,375 | 2,015 | 3.1 |
| 1977 | 6,607,213 | 7,845,529 | 67,007 | 284,965 | 160,096 | 2,066 | 3.1 |
| 1978 | 6,915,219 | 8,079,308 | 71,437 | 326,119 | 181,019 | 2,305 | 3.2 |
| 1979 | 7,341,081 | 7,724,148 | 74,651 | 343,542 | 190,697 | 2,635 | 3.5 |
| 1980 | 7,809,423 | 7,797,375 | 75,281 | 357,720 | 201,385 | 2,879 | 3.8 |
| 1981 | 8,222,403 | 7,887,881 | 76,146 | 368,766 | 205,437 | 3,119 | 4.1 |
| 1982 | 8,598,019 | 8,622,549 | 79,497 | 361,312 | 195,834 | 2,710 | 3.4 |
| 1983 | 8,987,493 | 9,064,490 | 81,775 | 384,614 | 194,791 | 2,729 | 3.3 |
| 1984 | 9,442,763 | 9,444,964 | 85,241 | 237,511 | 202,889 | 2,856 | 3.4 |
| 1985 | 9,630,975 | 10,827,693 | 88,057 | 250,412 | 216,596 | 2,870 | 3.3 |
| 1986 | 9,924,110 | 11,651,253 | 87,325 | 242,381 | 219,352 | 2,874 | 3.3 |
| 1987 | 10,241,063 | 11,738,273 | 92,865 | 240,429 | 215,886 | 2,891 | 3.1 |
| 1988 | 10,648,019 | 11,997,948 | 105,030 | 256,543 | 230,738 | 3,152 | 3.0 |
| 1989 | 11,109,288 | 12,276,272 | 108,876 | 252,439 | 230,060 | 3,033 | 2.8 |
| 1990 | 11,612,402 | 12,465,790 | 109,997 | 216,245 | 214,208 | 2,951 | 2.7 |
| 1991 | 12,170,821 | 11,184,146 [†] | 113,484 | 195,312 | 195,122 | 2,523 | 2.2 |
| 1992 | 11,550,126 [†] | 11,205,298 | 114,000 | 196,176 | 205,432 | 2,480 | 2.2 |
| 1993 | 11,767,409 | 11,159,938 | 119,768 | 199,039 | 212,454 | 2,719 | 2.3 |
| 1994 | 11,992,578 | 11,393,982 | 120,929 | 206,183 | 223,458 | 2,722 | 2.3 |

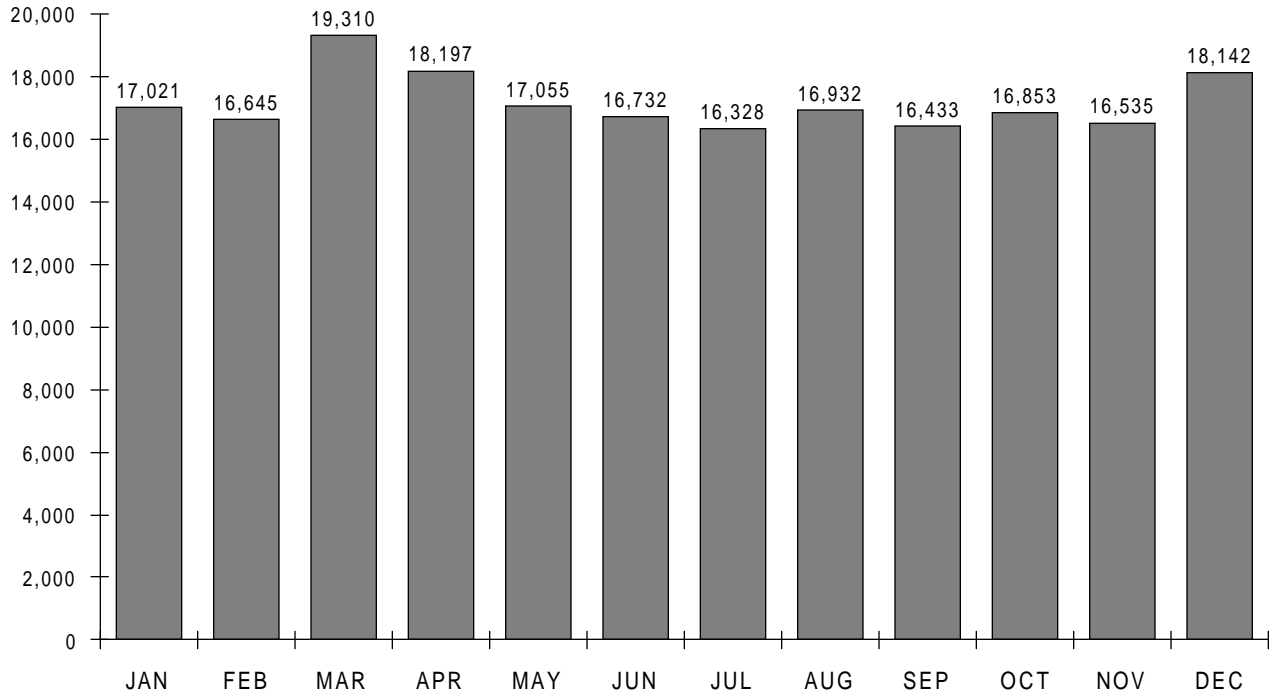
* IN MILLIONS

** PER 100 MILLION VEHICLE MILES OF TRAVEL

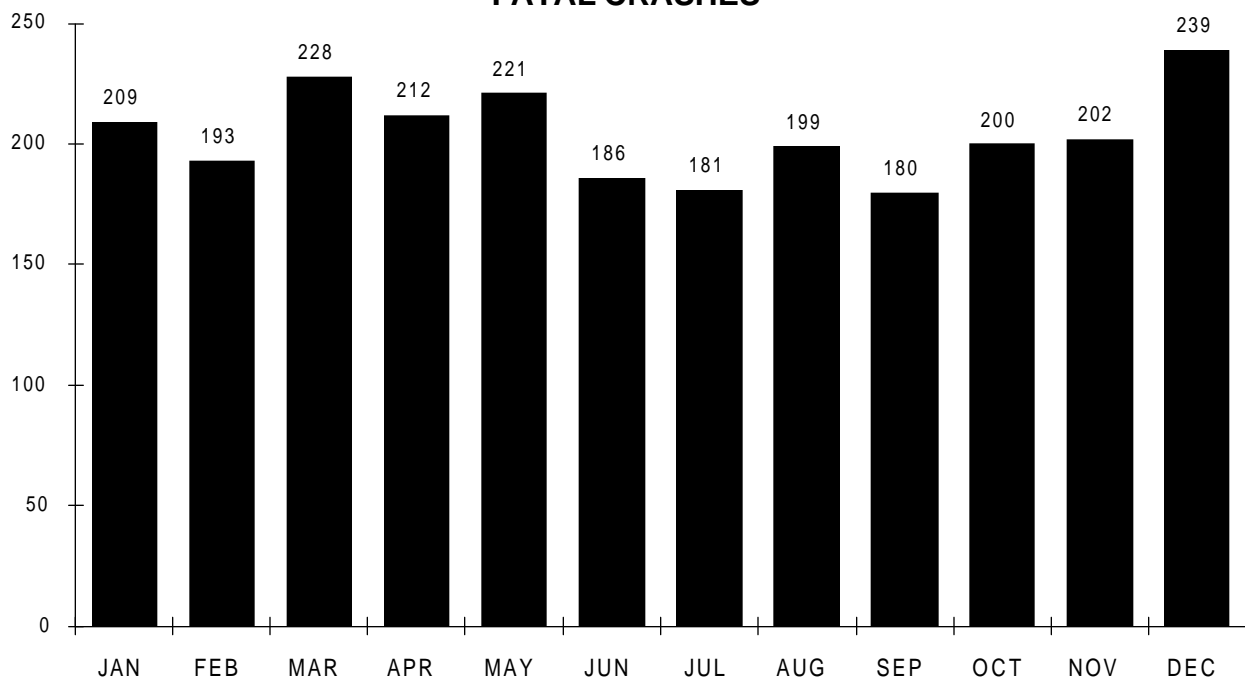
† DECREASE REFLECTS CHANGE IN ACCOUNTING METHOD

► Traffic Crashes by Month

ALL CRASHES

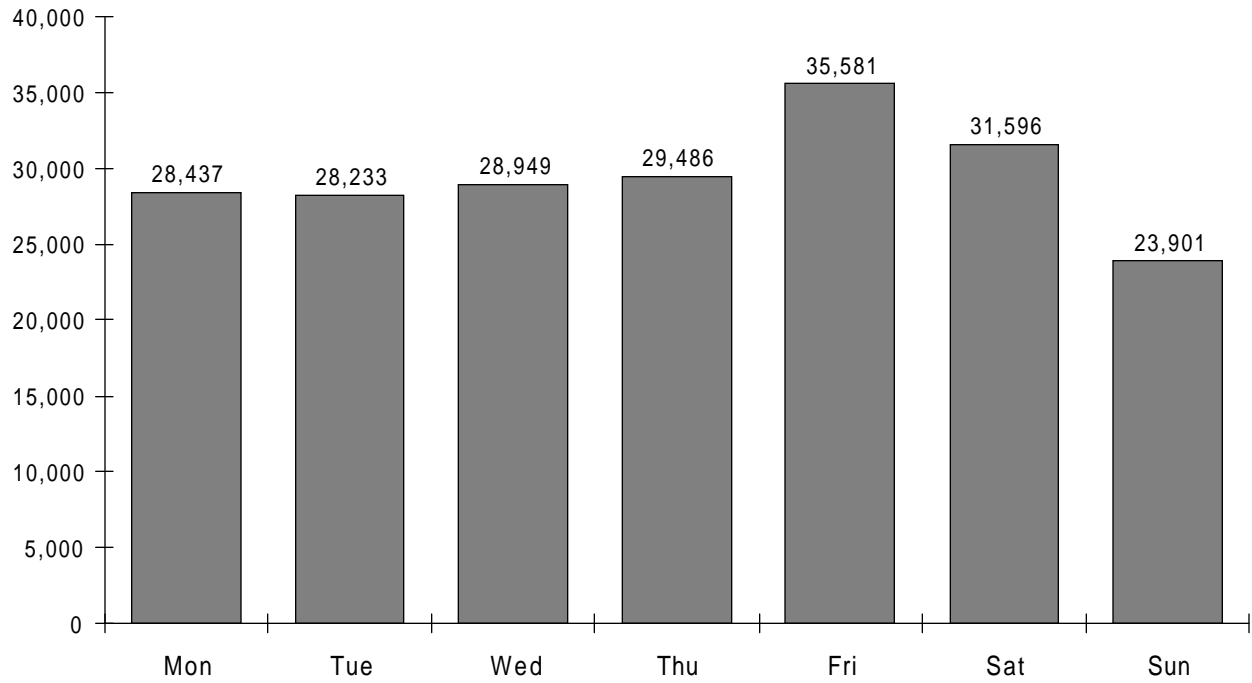


FATAL CRASHES

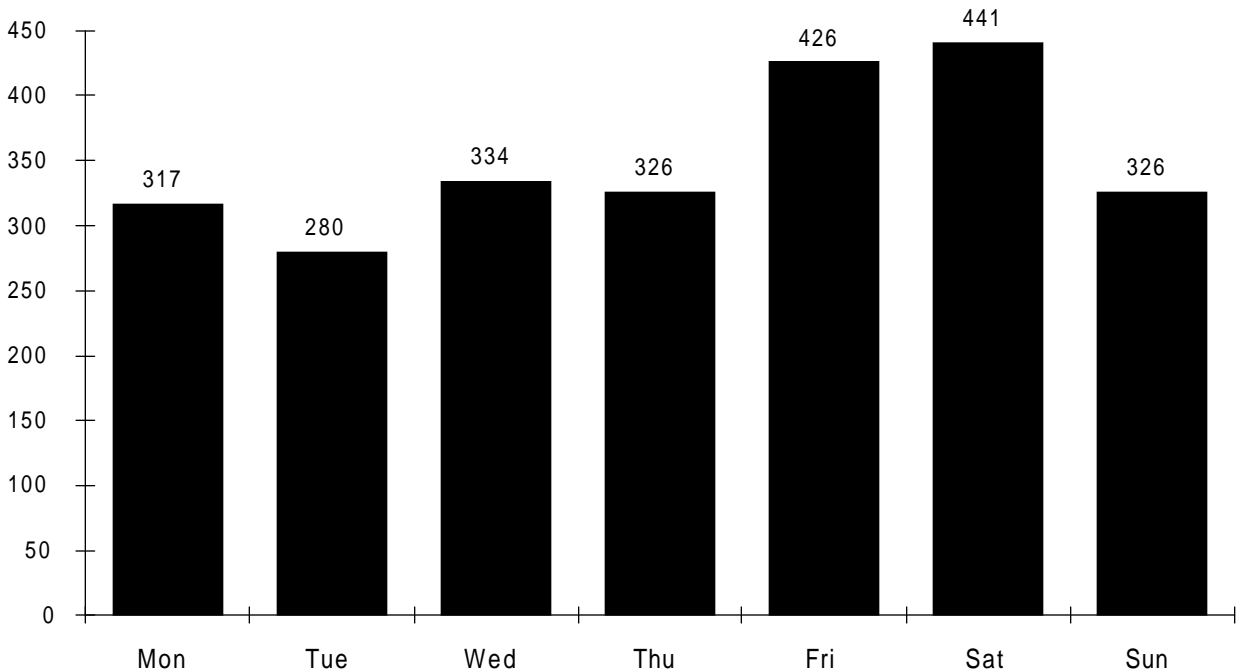


▶ Crashes by Day of Week

ALL CRASHES

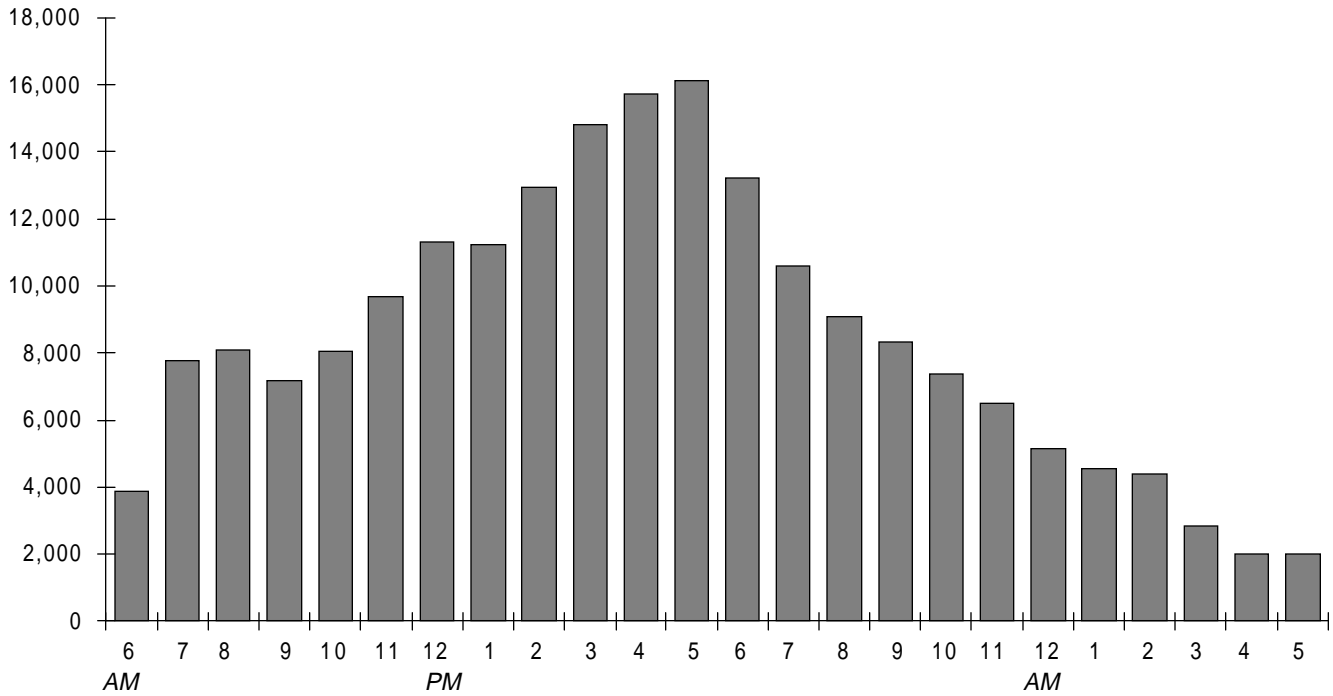


FATAL CRASHES

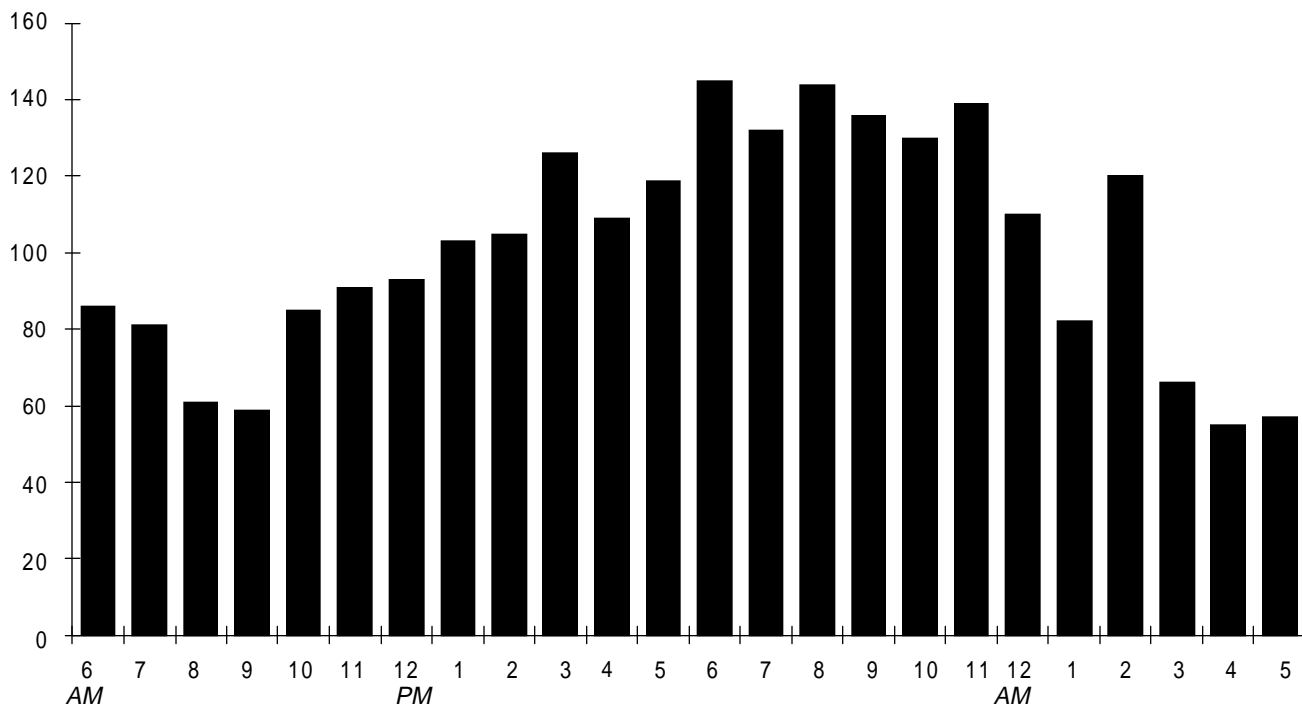


▶ Crashes by Time of Day

ALL CRASHES



FATAL CRASHES



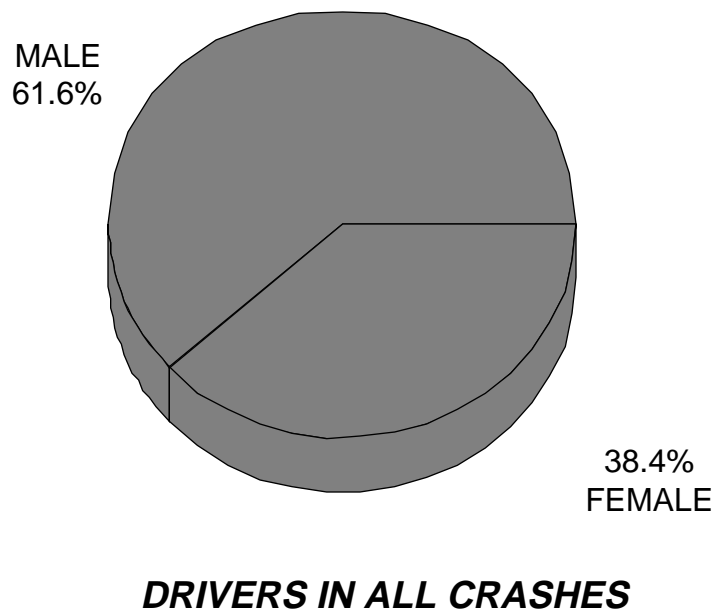
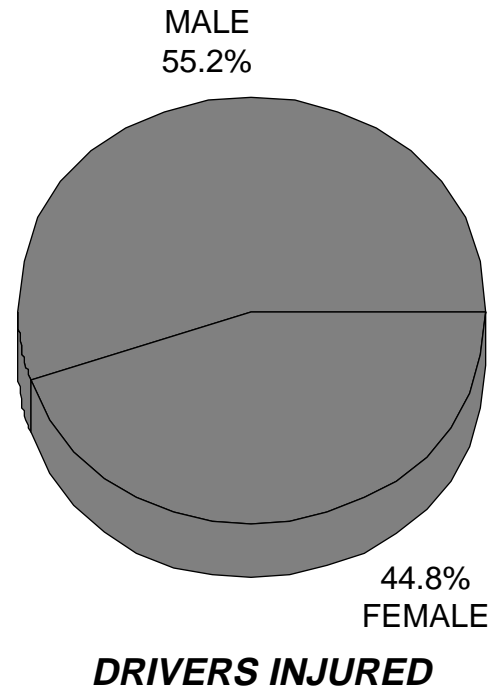
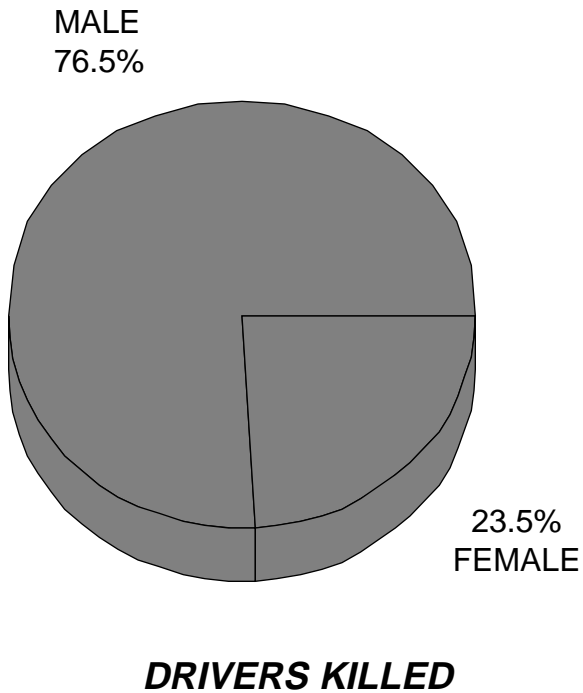
► Holiday Traffic Fatalities

Florida Traffic
Crash Facts 1994

| HOLIDAY PERIOD | | 1991 | 1992 | 1993 | 1994 |
|-------------------------|------------|-------|-------|-------|-------|
| New Year | HOURS | 102 | 54 | 102 | 78 |
| | FATALITIES | 22 | 7 | 35 | 29 |
| | RATE* | 0.22 | 0.13 | 0.34 | .37 |
| Memorial Day | HOURS | 78 | 78 | 78 | 78 |
| | FATALITIES | 28 | 32 | 24 | 24 |
| | RATE* | 0.36 | 0.41 | 0.31 | .31 |
| Independence Day | HOURS | 102 | 78 | 78 | 78 |
| | FATALITIES | 30 | 21 | 30 | 28 |
| | RATE* | 0.29 | 0.27 | 0.38 | .36 |
| Labor Day | HOURS | 78 | 78 | 78 | 78 |
| | FATALITIES | 36 | 36 | 30 | 28 |
| | RATE* | 0.46 | 0.46 | 0.38 | .36 |
| Thanksgiving | HOURS | 102 | 102 | 102 | 102 |
| | FATALITIES | 40 | 20 | 39 | 39 |
| | RATE* | 0.39 | 0.20 | 0.38 | .38 |
| Christmas | HOURS | 54 | 102 | 78 | 78 |
| | FATALITIES | 15 | 43 | 33 | 37 |
| | RATE* | 0.28 | 0.42 | 0.42 | .47 |
| All Days in Year | HOURS | 8,760 | 8,784 | 8,760 | 8,760 |
| | FATALITIES | 2,523 | 2,480 | 2,719 | 2,722 |
| | RATE* | 0.29 | 0.28 | 0.31 | .31 |

*FATALITIES PER HOUR

► Sex of Drivers in Crashes



Note: Charts do not include drivers whose sex was not stated.

FLORIDA RESIDENT DRIVERS IN ALL CRASHES BY AGE

| | DRIVER LICENSES ISSUED | PERCENT | IN ALL CRASHES | PERCENT | DRINKING DRIVERS | PERCENT |
|-------------|---------------------------|---------|-------------------|---------|---------------------|---------|
| UNDER 15 | 0 | 0.00% | 2,834 | 0.92% | 21 | 0.11% |
| 15 TO 19 | 548,481 | 4.57% | 33,867 | 10.98% | 993 | 5.15% |
| 20 TO 24 | 1,019,642 | 8.50% | 42,798 | 13.88% | 3,010 | 15.60% |
| 25 TO 29 | 1,218,583 | 10.16% | 38,692 | 12.55% | 2,988 | 15.48% |
| 30 TO 34 | 1,398,333 | 11.66% | 39,320 | 12.75% | 3,466 | 17.96% |
| 35 TO 39 | 1,307,713 | 10.90% | 33,595 | 10.89% | 2,864 | 14.84% |
| 40 TO 44 | 1,135,224 | 9.47% | 26,439 | 8.57% | 1,959 | 10.15% |
| 45 TO 49 | 992,477 | 8.28% | 20,825 | 6.75% | 1,261 | 6.53% |
| 50 TO 54 | 793,990 | 6.62% | 15,223 | 4.94% | 826 | 4.28% |
| 55 TO 59 | 663,086 | 5.53% | 11,852 | 3.84% | 550 | 2.85% |
| 60 TO 64 | 649,898 | 5.42% | 9,803 | 3.18% | 415 | 2.15% |
| 65 TO 69 | 698,885 | 5.83% | 9,396 | 3.05% | 338 | 1.75% |
| 70 TO 74 | 654,420 | 5.46% | 8,074 | 2.62% | 186 | 0.96% |
| 75 TO 79 | 474,047 | 3.95% | 6,215 | 2.02% | 104 | 0.54% |
| 80 TO 84 | 287,522 | 2.40% | 3,697 | 1.20% | 38 | 0.20% |
| 85 AND OVER | 150,277 | 1.25% | 2,219 | 0.72% | 51 | 0.26% |
| NOT STATED | 0 | 0.00% | 3,528 | 1.14% | 229 | 1.19% |
| TOTAL | 11,992,578 | | 308,377 | | 19,299 | |

FLORIDA RESIDENT DRIVERS IN FATAL CRASHES BY AGE

| | DRIVER LICENSES ISSUED | PERCENT | IN FATAL CRASHES | PERCENT | DRINKING DRIVERS | PERCENT |
|-------------|---------------------------|---------|---------------------|---------|---------------------|---------|
| UNDER 15 | 0 | 0.00% | 28 | 0.78% | 1 | 0.15% |
| 15 TO 19 | 548,481 | 4.57% | 371 | 10.36% | 45 | 6.86% |
| 20 TO 24 | 1,019,642 | 8.50% | 483 | 13.49% | 116 | 17.68% |
| 25 TO 29 | 1,218,583 | 10.16% | 438 | 12.23% | 122 | 18.60% |
| 30 TO 34 | 1,398,333 | 11.66% | 429 | 11.98% | 107 | 16.31% |
| 35 TO 39 | 1,307,713 | 10.90% | 394 | 11.00% | 102 | 15.55% |
| 40 TO 44 | 1,135,224 | 9.47% | 261 | 7.29% | 60 | 9.15% |
| 45 TO 49 | 992,477 | 8.28% | 219 | 6.12% | 35 | 5.34% |
| 50 TO 54 | 793,990 | 6.62% | 179 | 5.00% | 24 | 3.66% |
| 55 TO 59 | 663,086 | 5.53% | 137 | 3.83% | 11 | 1.68% |
| 60 TO 64 | 649,898 | 5.42% | 117 | 3.27% | 10 | 1.52% |
| 65 TO 69 | 698,885 | 5.83% | 126 | 3.52% | 9 | 1.37% |
| 70 TO 74 | 654,420 | 5.46% | 100 | 2.79% | 6 | 0.91% |
| 75 TO 79 | 474,047 | 3.95% | 111 | 3.10% | 1 | 0.15% |
| 80 TO 84 | 287,522 | 2.40% | 95 | 2.65% | 1 | 0.15% |
| 85 AND OVER | 150,277 | 1.25% | 61 | 1.70% | 2 | 0.30% |
| NOT STATED | 0 | 0.00% | 32 | 0.89% | 4 | 0.61% |
| TOTAL | 11,992,578 | | 3,581 | | 656 | |

Selected Age Groups*

| Age of Driver | Driver Licenses Issued | % | Drivers In All Crashes | % | Drinking Drivers In All Crashes | % | Drivers In Fatal Crashes | % | Drinking Drivers In Fatal Crashes | % |
|---------------|------------------------|-------|------------------------|-------|---------------------------------|-------|--------------------------|-------|-----------------------------------|-------|
| Under 15 | 0 | 0.00% | 2,834 | 0.92% | 21 | 0.11% | 28 | 0.78% | 1 | 0.15% |
| 15 | 41,087 | 0.34% | 939 | 0.30% | 15 | 0.08% | 17 | 0.47% | 1 | 0.15% |
| 16 | 95,465 | 0.80% | 6,716 | 2.18% | 90 | 0.47% | 63 | 1.76% | 1 | 0.15% |
| 17 | 122,726 | 1.02% | 8,374 | 2.72% | 191 | 0.99% | 101 | 2.82% | 10 | 1.52% |
| 18 | 136,580 | 1.14% | 8,954 | 2.90% | 323 | 1.67% | 79 | 2.21% | 15 | 2.29% |
| 19 | 152,623 | 1.27% | 8,884 | 2.88% | 374 | 1.94% | 111 | 3.10% | 18 | 2.74% |
| 20 | 169,534 | 1.41% | 8,330 | 2.70% | 437 | 2.26% | 98 | 2.74% | 19 | 2.90% |
| 21 | 183,055 | 1.53% | 8,546 | 2.77% | 648 | 3.36% | 105 | 2.93% | 33 | 5.03% |
| 22 | 204,968 | 1.71% | 8,646 | 2.80% | 614 | 3.18% | 90 | 2.51% | 19 | 2.90% |
| 23 | 224,364 | 1.87% | 8,896 | 2.88% | 667 | 3.46% | 102 | 2.85% | 27 | 4.12% |
| 24 | 237,721 | 1.98% | 8,380 | 2.72% | 644 | 3.34% | 88 | 2.46% | 18 | 2.74% |
| 25 | 237,286 | 1.98% | 7,979 | 2.59% | 615 | 3.19% | 114 | 3.18% | 32 | 4.88% |
| 26 | 234,246 | 1.95% | 7,595 | 2.46% | 587 | 3.04% | 80 | 2.23% | 22 | 3.35% |
| 27 | 238,349 | 1.99% | 7,542 | 2.45% | 540 | 2.80% | 82 | 2.29% | 31 | 4.73% |
| 28 | 248,359 | 2.07% | 7,521 | 2.44% | 606 | 3.14% | 76 | 2.12% | 14 | 2.13% |
| 29 | 260,343 | 2.17% | 8,055 | 2.61% | 640 | 3.32% | 86 | 2.40% | 23 | 3.51% |
| <hr/> | | | | | | | | | | |
| 70 | 141,255 | 1.18% | 1,678 | 0.54% | 47 | 0.24% | 19 | 0.53% | 1 | 0.15% |
| 71 | 132,735 | 1.11% | 1,664 | 0.54% | 42 | 0.22% | 22 | 0.61% | 1 | 0.15% |
| 72 | 130,597 | 1.09% | 1,663 | 0.54% | 39 | 0.20% | 18 | 0.50% | 1 | 0.15% |
| 73 | 128,497 | 1.07% | 1,561 | 0.51% | 26 | 0.13% | 19 | 0.53% | 2 | 0.30% |
| 74 | 121,336 | 1.01% | 1,508 | 0.49% | 32 | 0.17% | 22 | 0.61% | 1 | 0.15% |
| 75 | 105,898 | 0.88% | 1,374 | 0.45% | 17 | 0.09% | 23 | 0.64% | 0 | 0.00% |
| 76 | 106,523 | 0.89% | 1,317 | 0.43% | 20 | 0.10% | 33 | 0.92% | 0 | 0.00% |
| 77 | 94,276 | 0.79% | 1,290 | 0.42% | 22 | 0.11% | 17 | 0.47% | 0 | 0.00% |
| 78 | 88,313 | 0.74% | 1,148 | 0.37% | 26 | 0.13% | 18 | 0.50% | 0 | 0.00% |
| 79 | 79,037 | 0.66% | 1,086 | 0.35% | 19 | 0.10% | 20 | 0.56% | 1 | 0.15% |
| 80 | 75,174 | 0.63% | 982 | 0.32% | 12 | 0.06% | 27 | 0.75% | 0 | 0.00% |
| 81 | 63,027 | 0.53% | 852 | 0.28% | 13 | 0.07% | 22 | 0.61% | 1 | 0.15% |
| 82 | 59,074 | 0.49% | 720 | 0.23% | 5 | 0.03% | 16 | 0.45% | 0 | 0.00% |
| 83 | 46,628 | 0.39% | 600 | 0.19% | 6 | 0.03% | 13 | 0.36% | 0 | 0.00% |
| 84 | 43,619 | 0.36% | 543 | 0.18% | 2 | 0.01% | 17 | 0.47% | 0 | 0.00% |
| 85 and Over | 150,277 | 1.25% | 2,219 | 0.72% | 51 | 0.26% | 61 | 1.70% | 2 | 0.30% |

*License data on pages 12 and 13 are numbers of Florida driver licenses. Driver data are Florida resident drivers in crashes.

► Safety Equipment Use*

Florida Traffic
Crash Facts 1 9 9 4

| VEHICLE OCCUPANT | No Injury | Possible Injury | Non-Incapacitating Injury | Incapacitating Injury | Fatal | % of Fatalities | Total |
|------------------------------|----------------|-----------------|---------------------------|-----------------------|--------------|-----------------|----------------|
| With Safety Belts | 226,987 | 85,058 | 45,031 | 15,370 | 580 | 30.9% | 373,026 |
| With Safety Belts & Air Bags | 4,735 | 2,831 | 2,591 | 837 | 66 | 3.5% | 11,060 |
| With Air Bags (Only) | 272 | 272 | 234 | 130 | 18 | 1.0% | 926 |
| With Child Safety Restraint | 7,454 | 1,514 | 604 | 129 | 16 | 0.9% | 9,717 |
| Not Using Safety Equipment | 47,029 | 18,697 | 17,935 | 9,537 | 1,198 | 63.8% | 94,396 |
| TOTAL | 286,477 | 108,372 | 66,395 | 26,003 | 1,878 | 100.0% | 489,125 |

MOTORCYCLIST

| | | | | | | | |
|-----------------------|------------|------------|--------------|--------------|------------|---------------|--------------|
| With Safety Helmet | 228 | 588 | 1,732 | 1,061 | 125 | 84.5% | 3,734 |
| Without Safety Helmet | 128 | 256 | 473 | 259 | 23 | 15.5% | 1,139 |
| TOTAL | 356 | 844 | 2,205 | 1,320 | 148 | 100.0% | 4,873 |

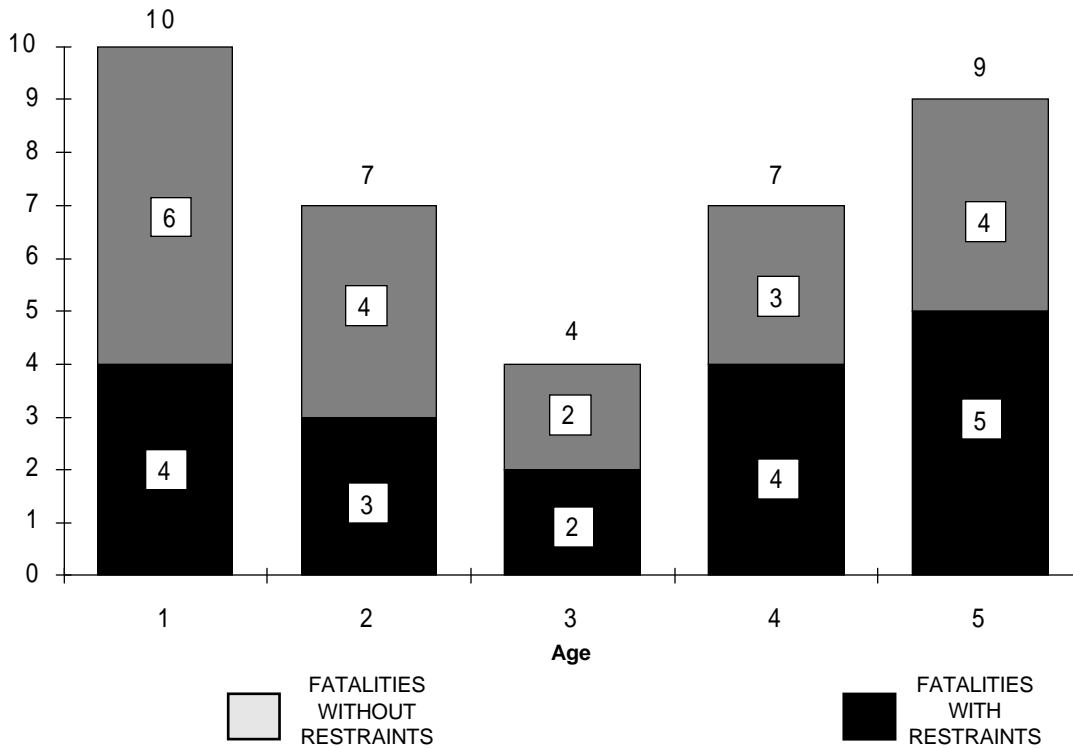
BICYCLIST

| | | | | | | | |
|-----------------------|------------|--------------|--------------|--------------|------------|---------------|--------------|
| With Safety Helmet | 13 | 81 | 169 | 84 | 8 | 6.6% | 355 |
| Without Safety Helmet | 467 | 2,112 | 3,384 | 1,093 | 114 | 93.4% | 7,170 |
| TOTAL | 480 | 2,193 | 3,553 | 1,177 | 122 | 100.0% | 7,525 |

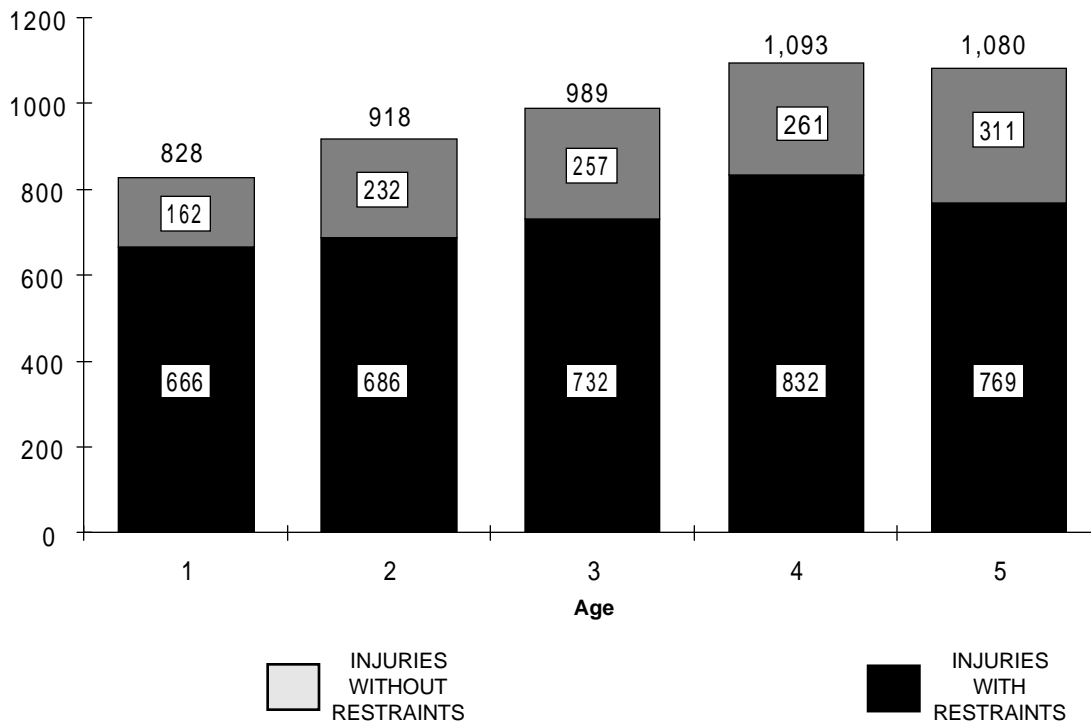
*Does not include cases with safety equipment use or injury level not stated

▶ Child Safety Restraint Use

TRAFFIC FATALITIES INVOLVING CHILDREN IN PASSENGER VEHICLES

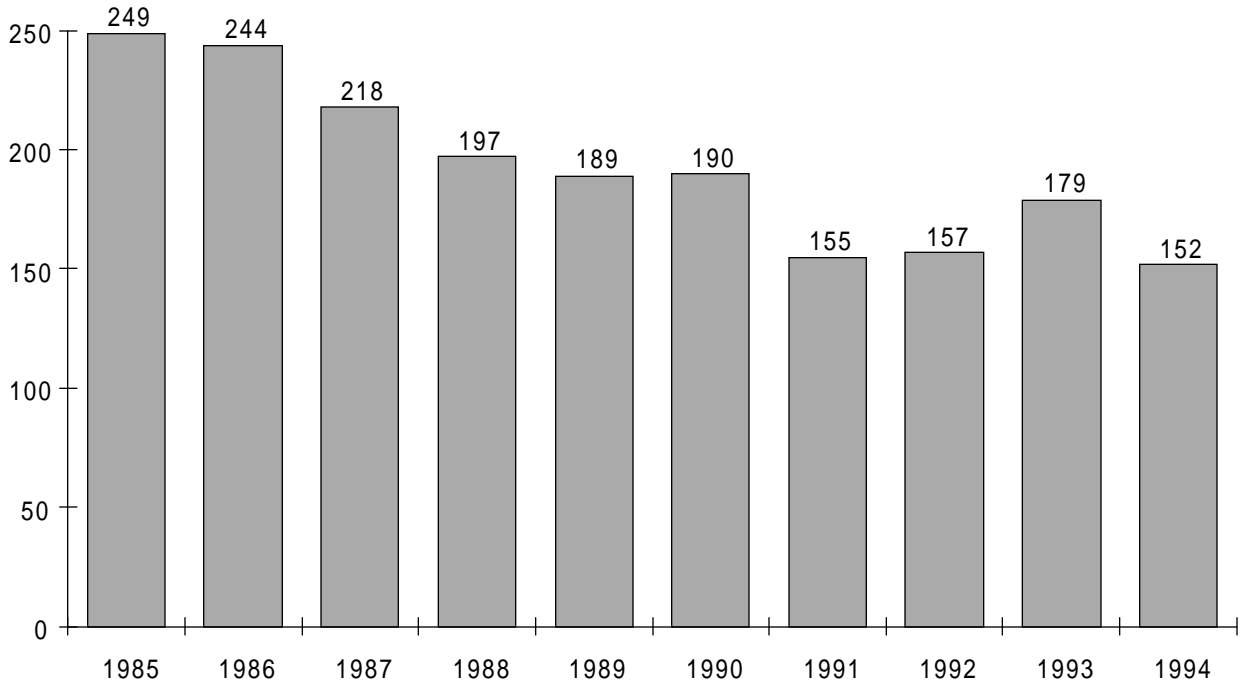


TRAFFIC INJURIES INVOLVING CHILDREN IN PASSENGER VEHICLES

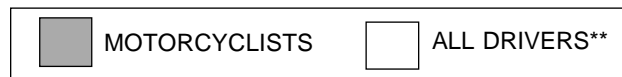
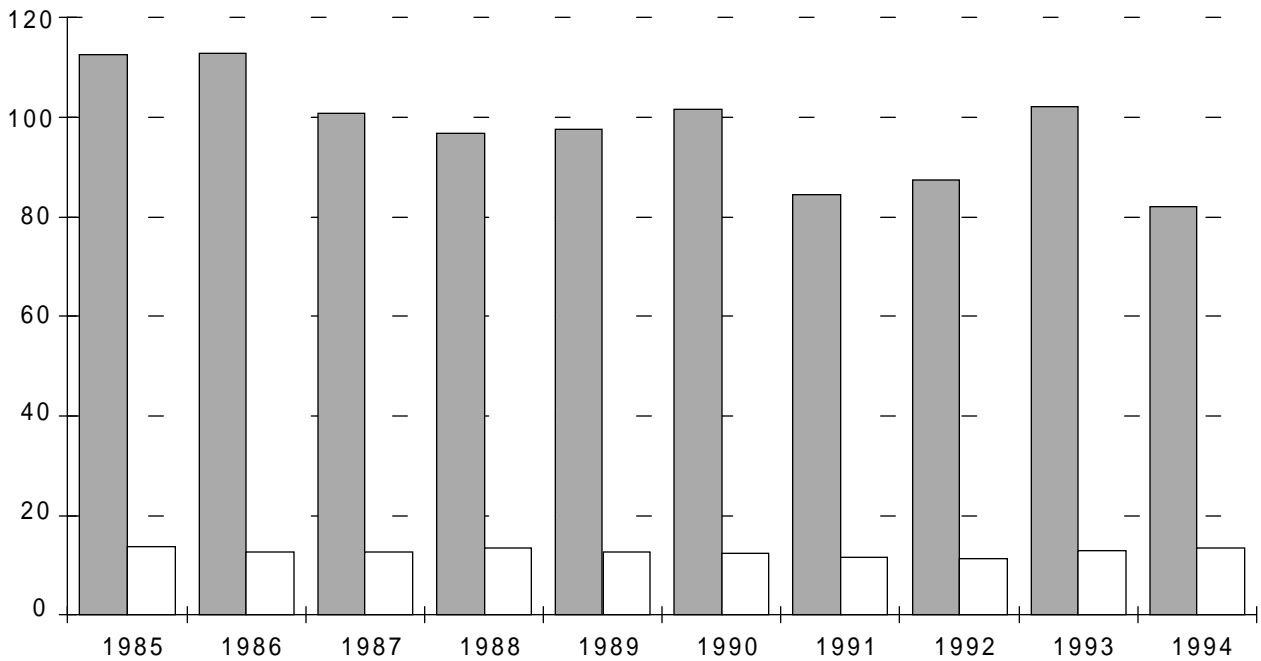


Motorcyclist Fatality Trends

MOTORCYCLISTS KILLED



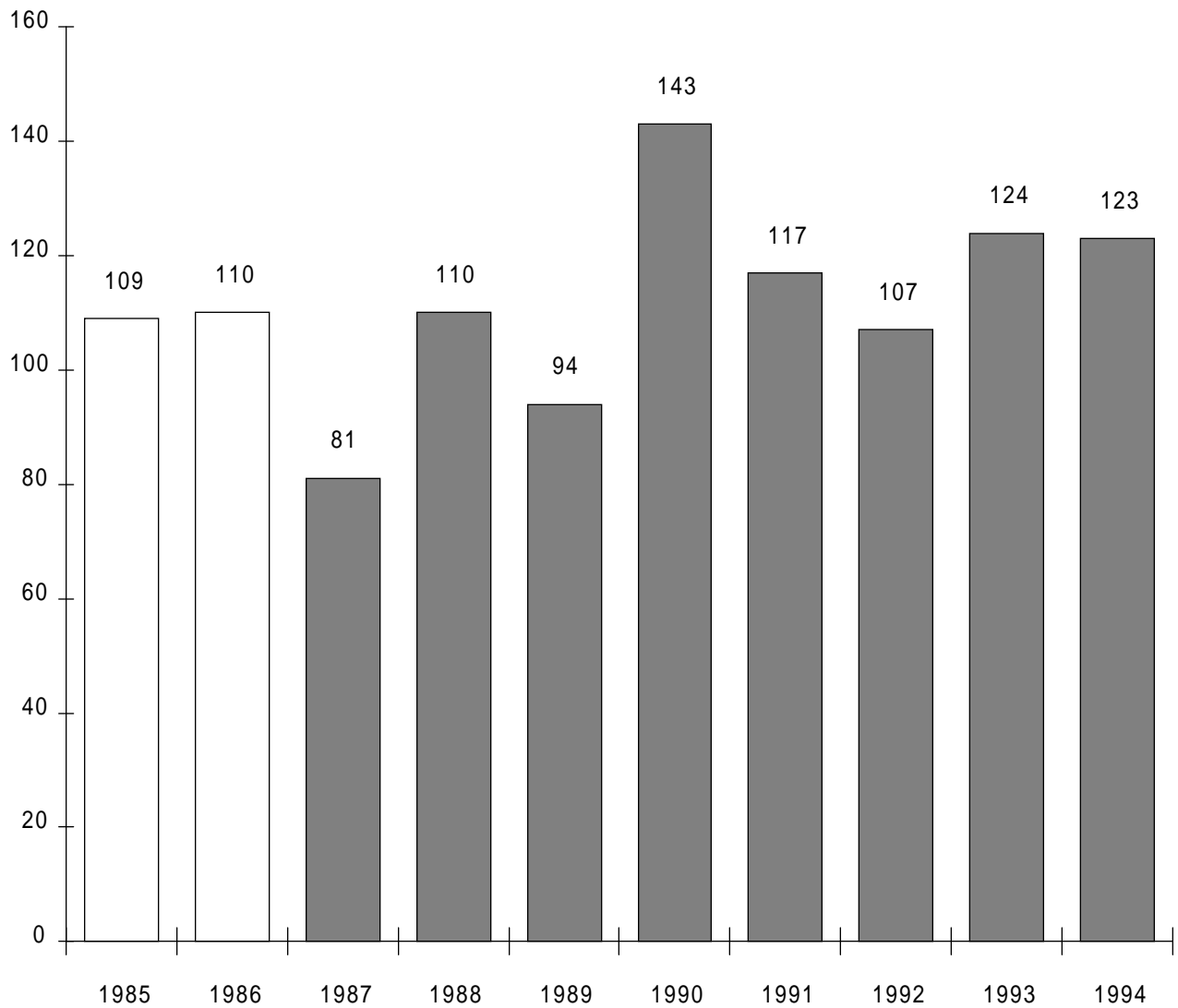
MOTORCYCLIST FATALITY RATE* (COMPARED TO ALL MOTOR VEHICLE DRIVERS)



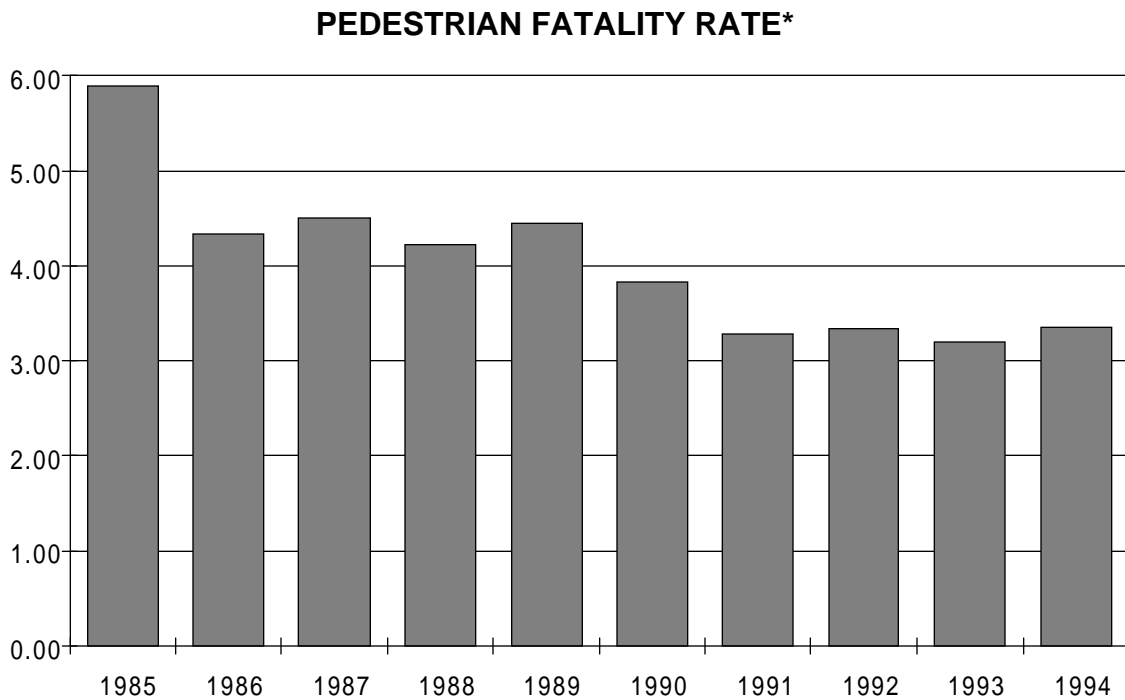
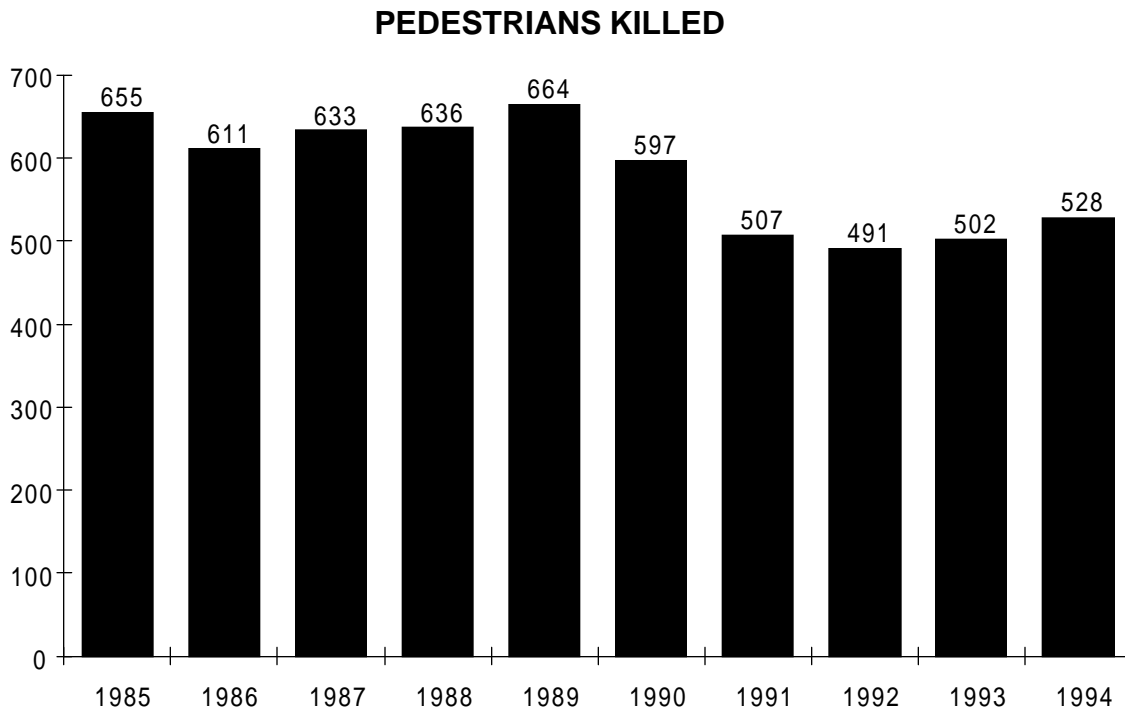
*PER 100,000 REGISTERED VEHICLES

**Data prior to 1987 include bicycle drivers.

► Bicyclist Fatality Trend

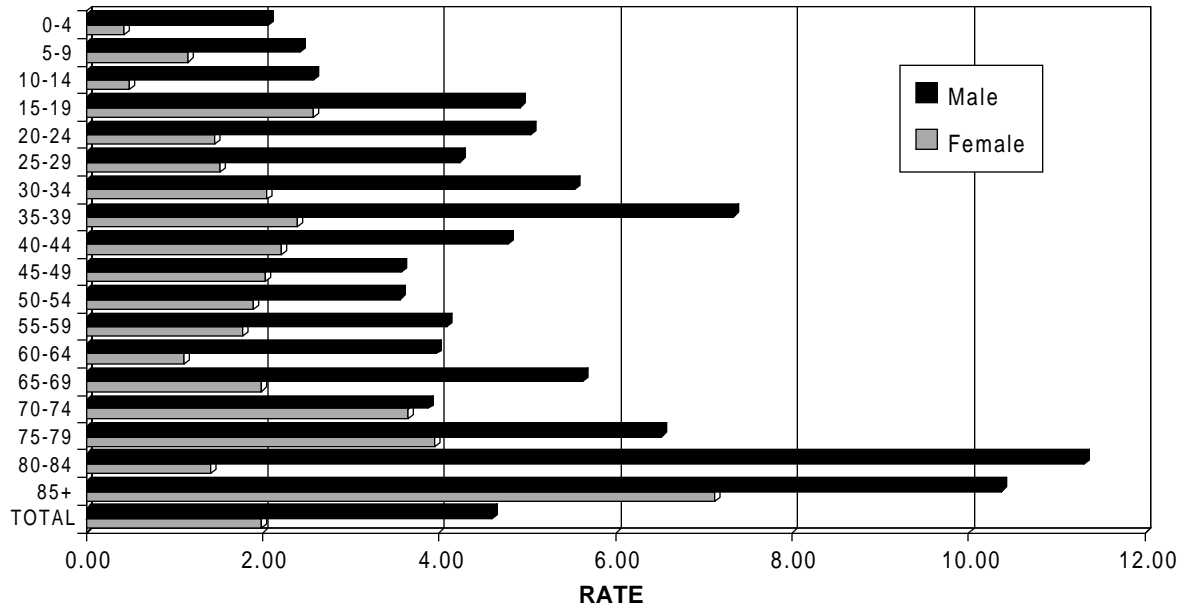


► Pedestrian Fatality Trends



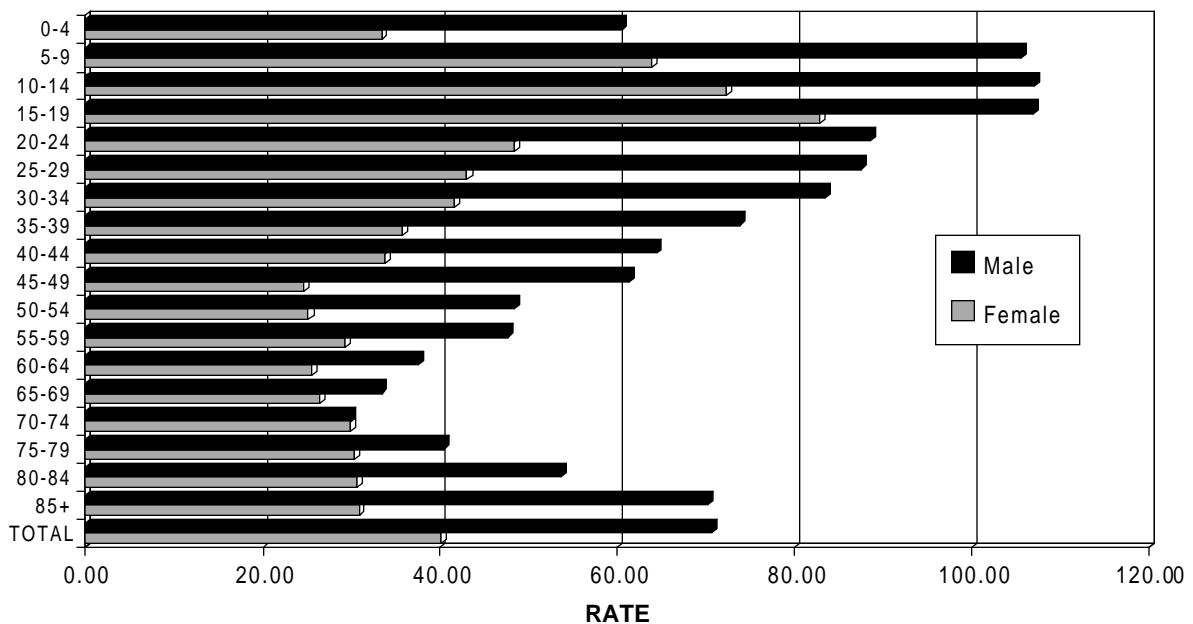
*FLORIDA RESIDENT PEDESTRIAN FATALITIES PER 100,000 RESIDENTS
Rates prior to 1987 include non-resident pedestrian fatalities.

PEDESTRIAN FATALITY RATE* BY SEX AND AGE



*RESIDENT PEDESTRIANS KILLED PER 100,000 POPULATION IN AGE GROUP

PEDESTRIAN INJURY RATE* BY SEX AND AGE



*RESIDENT PEDESTRIANS INJURED PER 100,000 POPULATION IN AGE GROUP

► Pedestrian Behavior in Crashes

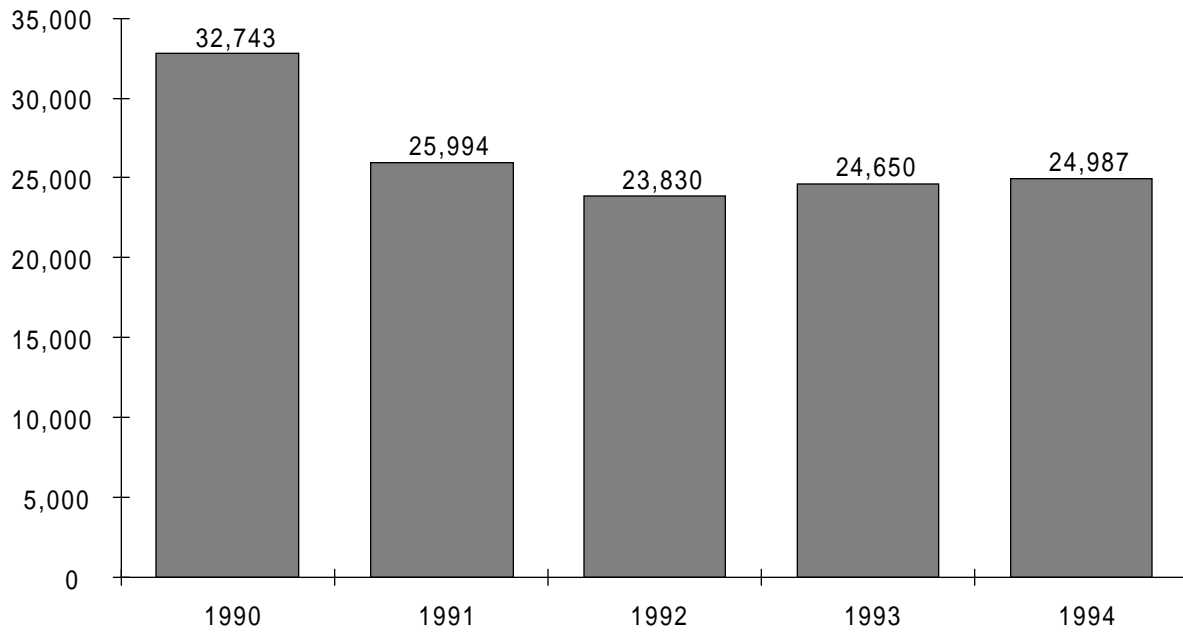
| Actions | Fatalities | % | Fatalities & Injuries | % |
|-------------------------------|-------------------|--------------|----------------------------------|--------------|
| Crossing At Intersection | 71 | 13.4 | 1,056 | 11.9 |
| Crossing Not At Intersection | 234 | 44.3 | 2,913 | 33.0 |
| Walking With Traffic | 43 | 8.1 | 599 | 6.8 |
| Walking Against Traffic | 12 | 2.3 | 256 | 2.9 |
| Standing Or Playing In Road | 41 | 7.8 | 671 | 7.6 |
| Pushing Or Working On Vehicle | 4 | 0.8 | 64 | 0.7 |
| Other Working In Road | 3 | 0.6 | 161 | 1.8 |
| Other | 120 | 22.7 | 3,117 | 35.3 |
| Not Stated | 0 | 0 | 0 | 0 |
| Totals | 528 | 100.0 | 8,837 | 100.0 |

► Contributing Causes

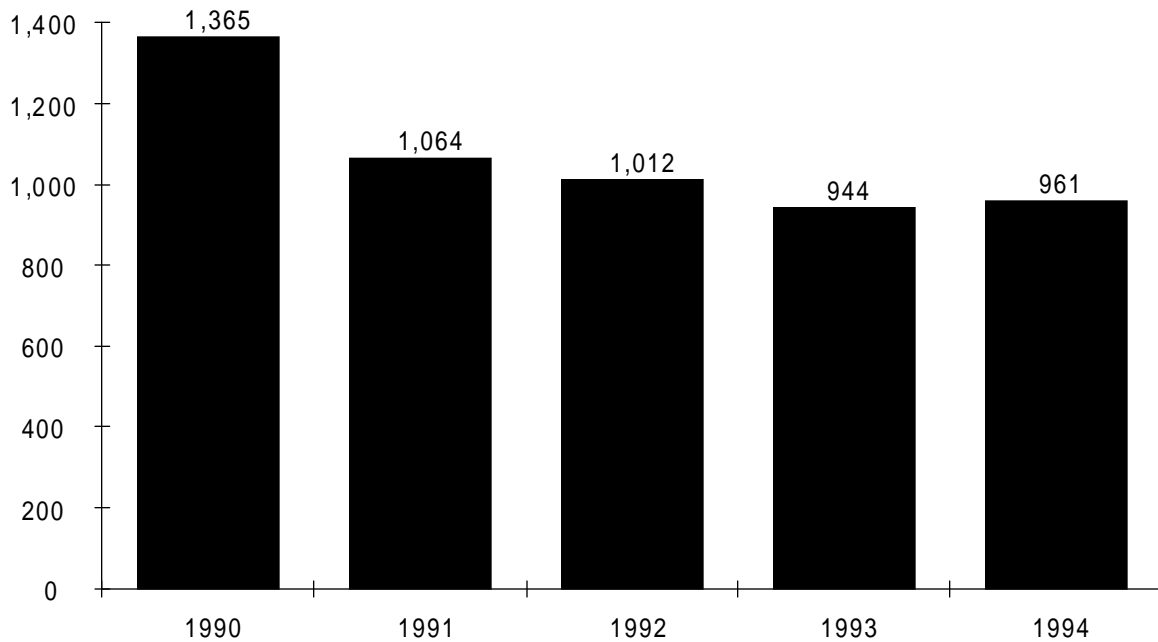
This table lists contributing causes reported by the investigating officer for drivers in traffic crashes. Percentage figures compare the relative frequency of these causes.

| Reported Contributing Causes | % of All Crashes | % of Fatal Crashes |
|--------------------------------------|-------------------------|---------------------------|
| No Improper Driving/Action | 49.60% | 36.61% |
| Careless Driving | 17.15% | 14.99% |
| Failed to Yield Right-of-Way | 11.00% | 9.60% |
| Alcohol - Under Influence | 2.51% | 5.21% |
| Disregarded Traffic Signal | 2.24% | 2.26% |
| Speed Too Fast | 2.19% | 10.47% |
| Improper Turn | 1.69% | 1.56% |
| Followed Too Closely | 1.58% | 0.17% |
| Improper Lane Change | 1.25% | 0.78% |
| Disregarded Stop Sign | 0.97% | 1.61% |
| Driving Wrong Side/Way | 0.93% | 4.54% |
| Improper Backing | 0.71% | 0.20% |
| Failed To Maintain Equipment/Vehicle | 0.65% | 0.83% |
| Improper Passing | 0.30% | 1.06% |
| Alcohol & Drugs - Under Influence | 0.27% | 0.59% |
| Drugs - Under Influence | 0.05% | 0.17% |
| All Other | 6.92% | 9.34% |

ALCOHOL-RELATED CRASHES

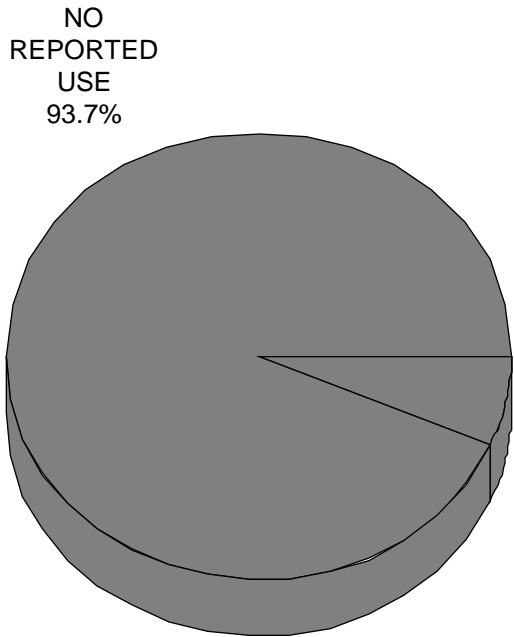


ALCOHOL-RELATED FATALITIES

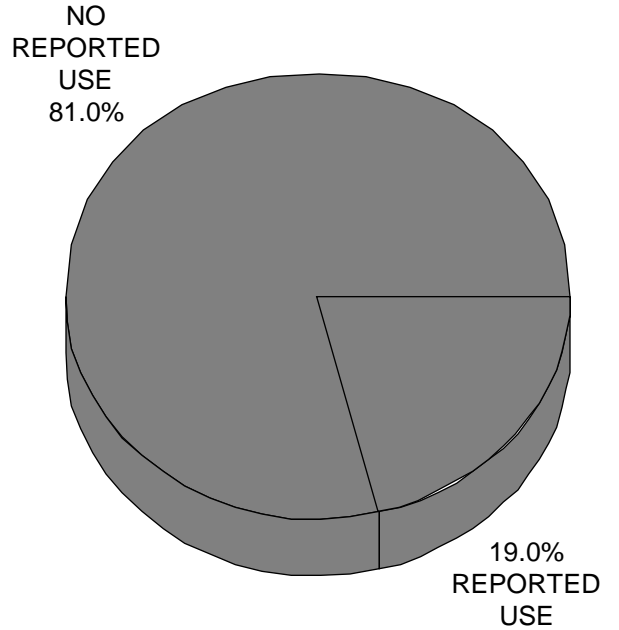


▶ Alcohol And Drug Use

DRIVERS

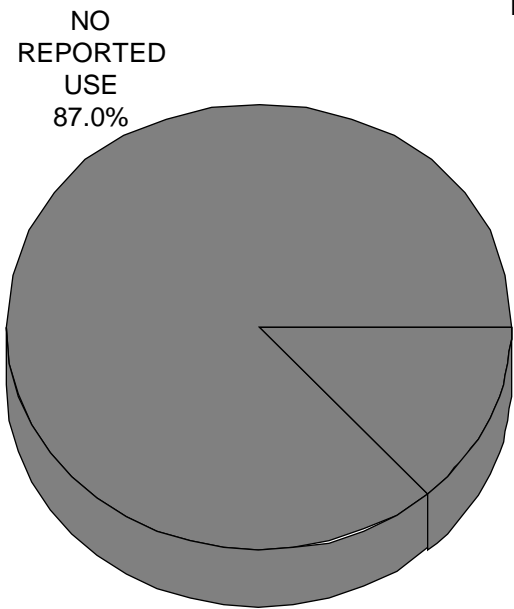


ALL CRASHES

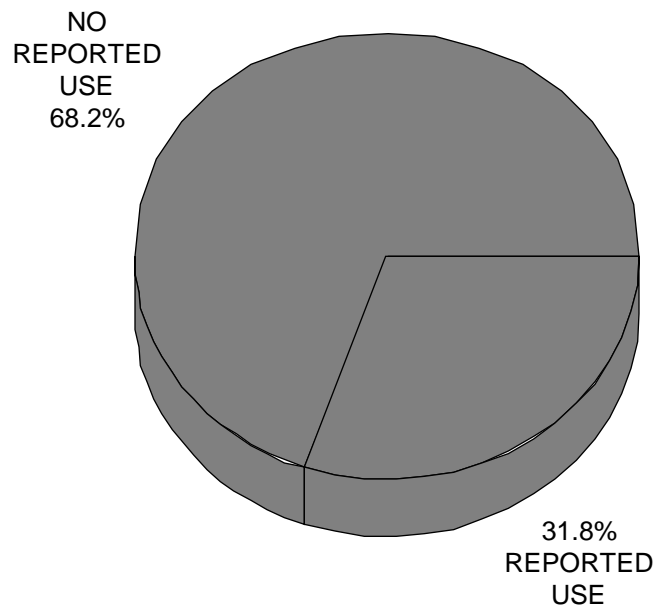


FATAL CRASHES

PEDESTRIANS



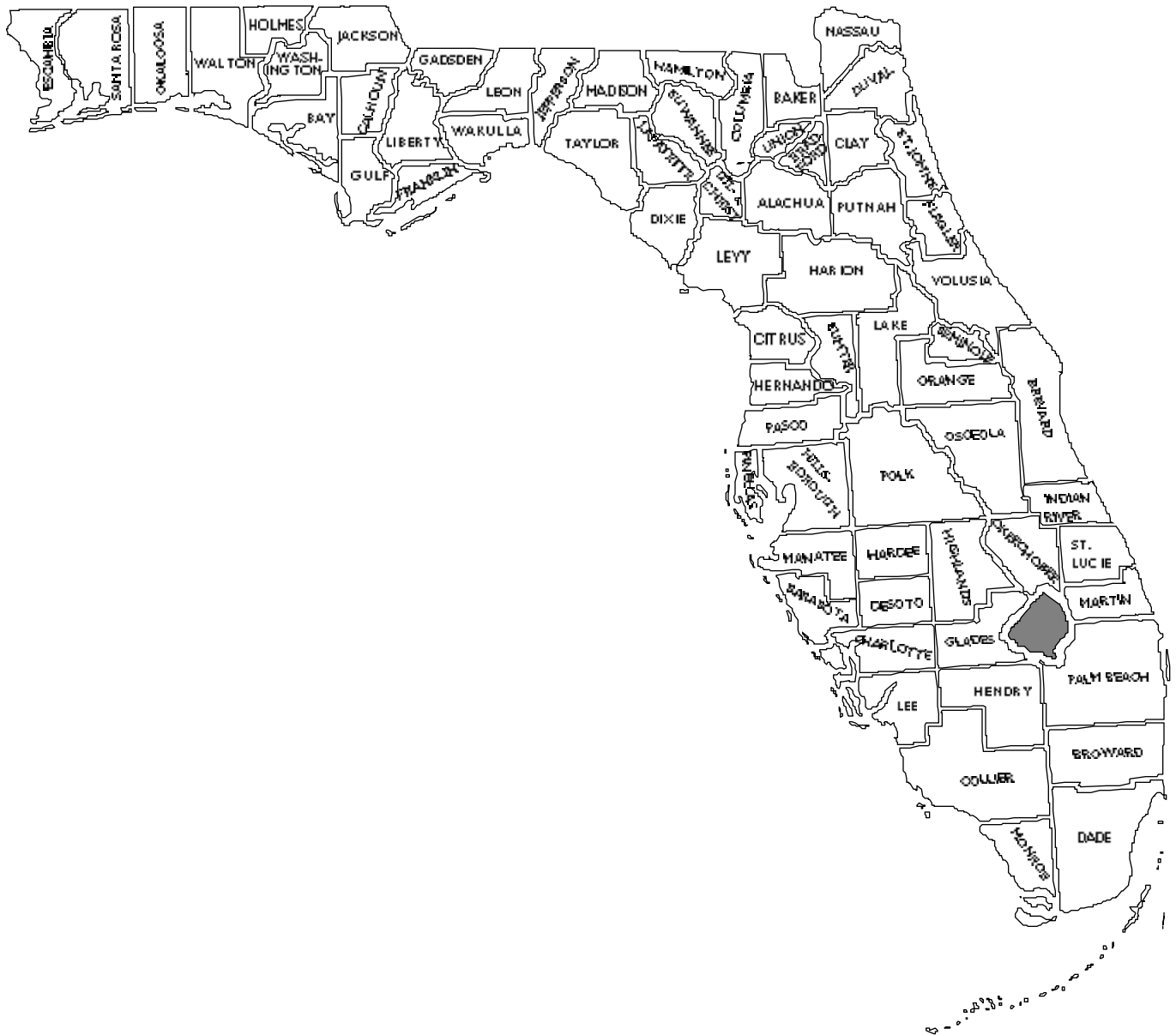
ALL CRASHES



FATAL CRASHES

► County/City Data

Florida Traffic
Crash Facts 1994



► Fatality Trend by County

| COUNTY | 1990 | 1991 | 1992 | 1993 | 1994 | COUNTY | 1990 | 1991 | 1992 | 1993 | 1994 |
|--------------|------|------|------|------|------|------------|-------|-------|-------|-------|-------|
| ALACHUA | 34 | 38 | 40 | 42 | 42 | LEON | 26 | 42 | 38 | 29 | 37 |
| BAKER | 5 | 7 | 6 | 4 | 5 | LEVY | 10 | 6 | 11 | 4 | 6 |
| BAY | 23 | 22 | 21 | 17 | 26 | LIBERTY | 1 | 0 | 2 | 0 | 4 |
| BRADFORD | 9 | 7 | 7 | 10 | 7 | MADISON | 12 | 7 | 6 | 7 | 4 |
| BREVARD | 89 | 77 | 71 | 68 | 62 | MANATEE | 40 | 33 | 28 | 42 | 48 |
| BROWARD | 199 | 179 | 180 | 210 | 215 | MARION | 80 | 65 | 64 | 79 | 56 |
| CALHOUN | 4 | 6 | 4 | 2 | 9 | MARTIN | 31 | 13 | 17 | 21 | 32 |
| CHARLOTTE | 26 | 19 | 20 | 26 | 18 | MONROE | 31 | 32 | 30 | 25 | 26 |
| CITRUS | 29 | 20 | 18 | 23 | 21 | NASSAU | 21 | 9 | 27 | 14 | 14 |
| CLAY | 18 | 14 | 11 | 16 | 20 | OKALOOSA | 33 | 16 | 24 | 24 | 21 |
| COLLIER | 59 | 53 | 46 | 46 | 35 | OKEECHOBEE | 24 | 10 | 6 | 16 | 11 |
| COLUMBIA | 17 | 28 | 14 | 26 | 22 | ORANGE | 161 | 113 | 102 | 117 | 120 |
| DADE | 377 | 298 | 319 | 365 | 307 | OSCEOLA | 42 | 34 | 35 | 25 | 44 |
| DE SOTO | 11 | 7 | 13 | 15 | 11 | PALM BEACH | 176 | 168 | 164 | 187 | 200 |
| DIXIE | 9 | 3 | 6 | 9 | 6 | PASCO | 78 | 40 | 45 | 67 | 74 |
| DUVAL | 108 | 100 | 93 | 103 | 111 | PINELLAS | 95 | 97 | 108 | 100 | 106 |
| ESCAMBIA | 57 | 46 | 39 | 40 | 55 | POLK | 108 | 101 | 102 | 118 | 90 |
| FLAGLER | 15 | 10 | 13 | 10 | 7 | PUTNAM | 26 | 25 | 18 | 18 | 25 |
| FRANKLIN | 1 | 5 | 3 | 2 | 2 | ST. JOHNS | 34 | 22 | 26 | 25 | 12 |
| GADSDEN | 18 | 26 | 20 | 16 | 16 | ST. LUCIE | 30 | 36 | 34 | 29 | 43 |
| GILCHRIST | 3 | 3 | 5 | 5 | 3 | SANTA ROSA | 25 | 24 | 21 | 26 | 16 |
| GLADES | 5 | 5 | 5 | 7 | 4 | SARASOTA | 48 | 35 | 43 | 35 | 44 |
| GULF | 6 | 3 | 3 | 4 | 3 | SEMINOLE | 27 | 33 | 27 | 30 | 36 |
| HAMILTON | 5 | 6 | 4 | 8 | 9 | SUMTER | 17 | 17 | 19 | 15 | 8 |
| HARDEE | 12 | 5 | 10 | 13 | 7 | SUWANNEE | 13 | 14 | 11 | 12 | 17 |
| HENDRY | 27 | 17 | 15 | 8 | 19 | TAYLOR | 4 | 5 | 6 | 3 | 6 |
| HERNANDO | 19 | 18 | 28 | 32 | 35 | UNION | 6 | 4 | 1 | 6 | 4 |
| HIGHLANDS | 21 | 16 | 19 | 35 | 19 | VOLUSIA | 87 | 100 | 66 | 100 | 108 |
| HILLSBOROUGH | 227 | 181 | 182 | 168 | 198 | WAKULLA | 6 | 7 | 4 | 8 | 7 |
| HOLMES | 8 | 9 | 5 | 12 | 9 | WALTON | 18 | 23 | 19 | 18 | 11 |
| INDIAN RIVER | 33 | 21 | 9 | 20 | 19 | WASHINGTON | 8 | 8 | 7 | 12 | 6 |
| JACKSON | 19 | 16 | 15 | 12 | 14 | | | | | | |
| JEFFERSON | 12 | 4 | 7 | 10 | 7 | STATEWIDE* | 2,951 | 2,523 | 2,480 | 2,719 | 2,722 |
| LAFAYETTE | 0 | 2 | 0 | 2 | 4 | | | | | | |
| LAKE | 41 | 35 | 33 | 38 | 41 | | | | | | |
| LEE | 87 | 78 | 85 | 82 | 98 | | | | | | |

*Statewide totals include crashes with county unknown.

► Crash Trend by County

| COUNTY | 1990 | 1991 | 1992 | 1993 | 1994 | COUNTY | 1990 | 1991 | 1992 | 1993 | 1994 |
|--------------|--------|--------|--------|--------|--------|------------|---------|---------|---------|---------|---------|
| ALACHUA | 2,765 | 2,873 | 2,990 | 3,336 | 3,349 | LEON | 4,876 | 4,297 | 4,194 | 4,164 | 4,511 |
| BAKER | 99 | 94 | 95 | 169 | 163 | LEVY | 227 | 201 | 251 | 263 | 290 |
| BAY | 1,958 | 1,779 | 1,753 | 1,718 | 1,777 | LIBERTY | 45 | 41 | 34 | 37 | 62 |
| BRADFORD | 359 | 338 | 357 | 332 | 367 | MADISON | 215 | 179 | 174 | 227 | 192 |
| BREVARD | 4,880 | 4,439 | 4,625 | 4,557 | 4,700 | MANATEE | 3,089 | 2,814 | 2,745 | 2,946 | 3,009 |
| BROWARD | 24,687 | 21,392 | 22,370 | 23,805 | 25,374 | MARION | 2,938 | 2,511 | 2,753 | 2,512 | 2,725 |
| CALHOUN | 106 | 103 | 110 | 113 | 97 | MARTIN | 1,396 | 1,315 | 1,206 | 1,231 | 1,316 |
| CHARLOTTE | 1,273 | 1,261 | 1,355 | 1,339 | 1,436 | MONROE | 1,745 | 1,154 | 1,169 | 1,254 | 1,165 |
| CITRUS | 806 | 857 | 873 | 899 | 951 | NASSAU | 609 | 521 | 476 | 472 | 398 |
| CLAY | 910 | 781 | 788 | 675 | 803 | OKALOOSA | 1,581 | 1,456 | 1,617 | 1,633 | 1,626 |
| COLLIER | 2,339 | 2,096 | 2,017 | 2,057 | 2,321 | OKEECHOBEE | 416 | 340 | 355 | 400 | 332 |
| COLUMBIA | 483 | 429 | 447 | 541 | 568 | ORANGE | 12,816 | 11,391 | 12,069 | 11,891 | 12,735 |
| DADE | 40,677 | 36,914 | 36,717 | 36,325 | 36,053 | OSCEOLA | 1,885 | 1,698 | 1,664 | 1,514 | 1,719 |
| DE SOTO | 333 | 283 | 333 | 265 | 297 | PALM BEACH | 15,000 | 12,865 | 13,201 | 13,388 | 14,448 |
| DIXIE | 106 | 90 | 98 | 129 | 90 | PASCO | 2,832 | 2,453 | 2,515 | 2,778 | 2,813 |
| DUVAL | 11,348 | 11,174 | 11,055 | 11,575 | 12,233 | PINELLAS | 11,561 | 11,130 | 10,354 | 10,471 | 10,971 |
| ESCAMBIA | 3,893 | 3,381 | 3,572 | 3,448 | 3,612 | POLK | 5,997 | 5,342 | 5,116 | 5,510 | 5,822 |
| FLAGLER | 304 | 274 | 264 | 307 | 338 | PUTNAM | 914 | 789 | 752 | 764 | 885 |
| FRANKLIN | 72 | 65 | 77 | 75 | 81 | ST. JOHNS | 1,211 | 1,164 | 1,330 | 1,273 | 1,321 |
| GADSDEN | 624 | 571 | 568 | 609 | 613 | ST. LUCIE | 2,250 | 2,025 | 1,940 | 2,011 | 2,115 |
| GILCHRIST | 70 | 59 | 63 | 65 | 78 | SANTA ROSA | 844 | 814 | 866 | 872 | 960 |
| GLADES | 109 | 87 | 86 | 117 | 115 | SARASOTA | 3,723 | 3,280 | 2,913 | 2,900 | 3,043 |
| GULF | 85 | 86 | 70 | 94 | 71 | SEMINOLE | 2,743 | 2,349 | 2,394 | 2,302 | 3,020 |
| HAMILTON | 149 | 110 | 114 | 128 | 139 | SUMTER | 322 | 307 | 363 | 344 | 439 |
| HARDEE | 281 | 253 | 268 | 274 | 305 | SUWANNEE | 299 | 289 | 260 | 291 | 298 |
| HENDRY | 401 | 402 | 352 | 350 | 363 | TAYLOR | 286 | 248 | 230 | 263 | 291 |
| HERNANDO | 916 | 919 | 895 | 910 | 1,005 | UNION | 76 | 80 | 60 | 76 | 83 |
| HIGHLANDS | 709 | 650 | 687 | 733 | 660 | VOLUSIA | 6,111 | 5,762 | 5,986 | 5,902 | 5,987 |
| HILLSBOROUGH | 19,526 | 17,558 | 17,289 | 17,168 | 16,259 | WAKULLA | 189 | 177 | 166 | 140 | 163 |
| HOLMES | 172 | 154 | 142 | 123 | 151 | WALTON | 367 | 354 | 369 | 412 | 389 |
| INDIAN RIVER | 1,151 | 945 | 957 | 1,079 | 1,091 | WASHINGTON | 180 | 141 | 166 | 156 | 146 |
| JACKSON | 579 | 515 | 461 | 452 | 482 | | | | | | |
| JEFFERSON | 157 | 137 | 156 | 170 | 167 | STATEWIDE* | 216,245 | 195,312 | 196,176 | 199,039 | 206,183 |
| LAFAYETTE | 48 | 45 | 37 | 41 | 31 | | | | | | |
| LAKE | 1,763 | 1,560 | 1,545 | 1,537 | 1,710 | | | | | | |
| LEE | 5,357 | 5,141 | 4,759 | 4,937 | 4,855 | | | | | | |

*Statewide totals include crashes with county unknown.

▶ Alcohol-Related Fatalities by County

Florida Traffic
Crash Facts 1994

| COUNTY | Total Fatalities | Alcohol- Related Fatalities | Alcohol-Related Fatalities as Percent of Total | COUNTY | Total Fatalities | Alcohol- Related Fatalities | Alcohol-Related Fatalities as Percent of Total |
|--------------|---------------------|-----------------------------------|--|------------|---------------------|-----------------------------------|--|
| ALACHUA | 42 | 19 | 45.24 | LEON | 37 | 13 | 35.14 |
| BAKER | 5 | 4 | 80.00 | LEVY | 6 | 2 | 33.33 |
| BAY | 26 | 9 | 34.62 | LIBERTY | 4 | 3 | 75.00 |
| BRADFORD | 7 | 2 | 28.57 | MADISON | 4 | 3 | 75.00 |
| BREVARD | 62 | 25 | 40.32 | MANATEE | 48 | 20 | 41.67 |
| BROWARD | 215 | 55 | 25.58 | MARION | 56 | 23 | 41.07 |
| CALHOUN | 9 | 3 | 33.33 | MARTIN | 32 | 12 | 37.50 |
| CHARLOTTE | 18 | 5 | 27.78 | MONROE | 26 | 15 | 57.69 |
| CITRUS | 21 | 11 | 52.38 | NASSAU | 14 | 1 | 7.14 |
| CLAY | 20 | 14 | 70.00 | OKALOOSA | 21 | 10 | 47.62 |
| COLLIER | 35 | 9 | 25.71 | OKEECHOBEE | 11 | 4 | 36.36 |
| COLUMBIA | 22 | 8 | 36.36 | ORANGE | 120 | 51 | 47.86 |
| DADE | 307 | 71 | 23.13 | OSCEOLA | 44 | 18 | 42.50 |
| DE SOTO | 11 | 5 | 45.45 | PALM BEACH | 200 | 72 | 36.00 |
| DIXIE | 6 | 4 | 66.67 | PASCO | 74 | 21 | 28.38 |
| DUVAL | 111 | 35 | 31.53 | PINELLAS | 106 | 33 | 31.13 |
| ESCAMBIA | 55 | 25 | 45.45 | POLK | 90 | 25 | 27.78 |
| FLAGLER | 7 | 2 | 28.57 | PUTNAM | 25 | 15 | 60.00 |
| FRANKLIN | 2 | 1 | 50.00 | ST. JOHNS | 12 | 4 | 33.33 |
| GADSDEN | 16 | 8 | 50.00 | ST. LUCIE | 43 | 8 | 18.60 |
| GILCHRIST | 3 | 0 | 0.00 | SANTA ROSA | 16 | 8 | 50.00 |
| GLADES | 4 | 1 | 25.00 | SARASOTA | 44 | 18 | 40.91 |
| GULF | 3 | 2 | 66.67 | SEMINOLE | 36 | 17 | 47.22 |
| HAMILTON | 9 | 1 | 11.11 | SUMTER | 8 | 4 | 50.00 |
| HARDEE | 7 | 3 | 42.86 | SUWANNEE | 17 | 4 | 23.53 |
| HENDRY | 19 | 10 | 52.63 | TAYLOR | 6 | 4 | 66.67 |
| HERNANDO | 35 | 12 | 34.29 | UNION | 4 | 1 | 25.00 |
| HIGHLANDS | 19 | 6 | 31.58 | VOLUSIA | 108 | 43 | 39.81 |
| HILLSBOROUGH | 198 | 80 | 40.40 | WAKULLA | 7 | 4 | 57.14 |
| HOLMES | 9 | 5 | 55.56 | WALTON | 11 | 2 | 18.18 |
| INDIAN RIVER | 19 | 2 | 10.53 | WASHINGTON | 6 | 3 | 50.00 |
| JACKSON | 14 | 5 | 35.71 | | | | |
| JEFFERSON | 7 | 5 | 71.43 | STATEWIDE | 2,722 | 961 | 35.30 |
| LAFAYETTE | 4 | 1 | 25.00 | | | | |
| LAKE | 41 | 11 | 26.83 | | | | |
| LEE | 98 | 41 | 41.84 | | | | |

Alcohol-Related Crashes by County

| COUNTY | Total Crashes | Alcohol-Related Crashes | Alcohol-Related Crashes as Percent of Total | COUNTY | Total Crashes | Alcohol-Related Crashes | Alcohol-Related Crashes as Percent of Total |
|--------------|---------------|-------------------------|---|------------|---------------|-------------------------|---|
| ALACHUA | 3,349 | 368 | 10.99 | LEON | 4,511 | 528 | 11.70 |
| BAKER | 163 | 43 | 26.38 | LEVY | 290 | 55 | 18.97 |
| BAY | 1,777 | 396 | 22.28 | LIBERTY | 62 | 14 | 22.58 |
| BRADFORD | 367 | 66 | 17.98 | MADISON | 192 | 25 | 13.02 |
| BREVARD | 4,700 | 820 | 17.45 | MANATEE | 3,009 | 448 | 14.89 |
| BROWARD | 25,374 | 2,262 | 8.91 | MARION | 2,725 | 399 | 14.64 |
| CALHOUN | 97 | 32 | 32.99 | MARTIN | 1,316 | 251 | 19.07 |
| CHARLOTTE | 1,436 | 214 | 14.90 | MONROE | 1,165 | 262 | 22.49 |
| CITRUS | 951 | 186 | 19.56 | NASSAU | 398 | 78 | 19.60 |
| CLAY | 803 | 140 | 17.43 | OKALOOSA | 1,626 | 322 | 19.80 |
| COLLIER | 2,321 | 418 | 18.01 | OKEECHOBEE | 332 | 68 | 20.48 |
| COLUMBIA | 568 | 129 | 22.71 | ORANGE | 12,735 | 1,525 | 11.97 |
| DADE | 36,053 | 2,496 | 6.92 | OSCEOLA | 1,719 | 248 | 14.43 |
| DE SOTO | 297 | 64 | 21.55 | PALM BEACH | 14,448 | 1,614 | 11.17 |
| DIXIE | 90 | 19 | 21.11 | PASCO | 2,813 | 413 | 14.68 |
| DUVAL | 12,233 | 1,175 | 9.61 | PINELLAS | 10,971 | 1,557 | 14.19 |
| ESCAMBIA | 3,612 | 736 | 20.38 | POLK | 5,822 | 756 | 12.99 |
| FLAGLER | 338 | 55 | 16.27 | PUTNAM | 885 | 146 | 16.50 |
| FRANKLIN | 81 | 26 | 32.10 | ST. JOHNS | 1,321 | 231 | 17.49 |
| GADSDEN | 613 | 135 | 22.02 | ST. LUCIE | 2,115 | 249 | 11.77 |
| GILCHRIST | 78 | 17 | 21.79 | SANTA ROSA | 960 | 207 | 21.56 |
| GLADES | 115 | 27 | 23.48 | SARASOTA | 3,043 | 542 | 17.81 |
| GULF | 71 | 16 | 22.54 | SEMINOLE | 3,020 | 409 | 13.54 |
| HAMILTON | 139 | 36 | 25.90 | SUMTER | 439 | 71 | 16.17 |
| HARDEE | 305 | 42 | 13.77 | SUWANNEE | 298 | 60 | 20.13 |
| HENDRY | 363 | 72 | 19.83 | TAYLOR | 291 | 60 | 20.62 |
| HERNANDO | 1,005 | 166 | 16.52 | UNION | 83 | 25 | 30.12 |
| HIGHLANDS | 660 | 93 | 14.09 | VOLUSIA | 5,987 | 890 | 14.87 |
| HILLSBOROUGH | 16,259 | 1,735 | 10.67 | WAKULLA | 163 | 49 | 30.06 |
| HOLMES | 151 | 44 | 29.14 | WALTON | 389 | 106 | 27.25 |
| INDIAN RIVER | 1,091 | 142 | 13.02 | WASHINGTON | 146 | 33 | 22.60 |
| JACKSON | 482 | 87 | 18.05 | | | | |
| JEFFERSON | 167 | 32 | 19.16 | STATEWIDE* | 206,183 | 24,987 | 12.12 |
| LAFAYETTE | 31 | 7 | 22.58 | | | | |
| LAKE | 1,710 | 249 | 14.56 | | | | |
| LEE | 4,855 | 778 | 16.02 | | | | |

*Statewide totals include crashes with county unknown.

▶ Alcohol-Related Crashes by City

Florida Traffic Crash Facts 1994

| City | County | Total Crashes | Alcohol-Related Crashes | Alcohol-Related Crashes as Percent of Total | City | County | Total Crashes | Alcohol-Related Crashes | Alcohol-Related Crashes as Percent of Total |
|----------------------|--------------|---------------|-------------------------|---|------------------------|--------------|---------------|-------------------------|---|
| ALACHUA | ALACHUA | 86 | 10 | 11.63 | CLEWISTON | HENDRY | 89 | 14 | 15.73 |
| ALFORD | JACKSON | 2 | 0 | 0.00 | CLOUD LAKE | PALM BEACH | 5 | 0 | 0.00 |
| ALTAMONTE SPRINGS | SEMINOLE | 718 | 75 | 10.45 | COCOA | BREVARD | 502 | 62 | 12.35 |
| ANNA MARIA | MANATEE | 6 | 0 | 0.00 | COCOA BEACH | BREVARD | 349 | 55 | 15.76 |
| APALACHICOLA | FRANKLIN | 12 | 2 | 16.67 | COCOA WEST | BREVARD | 1 | 0 | 0.00 |
| APOPKA | ORANGE | 211 | 12 | 5.69 | COCONUT CREEK | BROWARD | 364 | 29 | 7.97 |
| ARCADIA | DE SOTO | 89 | 12 | 13.48 | COLEMAN | SUMTER | 1 | 0 | 0.00 |
| ARCHER | ALACHUA | 26 | 3 | 11.54 | COLLIER MANR/CRESTHAVN | BROWARD | 4 | 0 | 0.00 |
| ATLANTIC BEACH | DUVAL | 148 | 31 | 20.95 | COMBEE SETTLEMENT | POLK | 1 | 0 | 0.00 |
| ATLANTIS | PALM BEACH | 12 | 0 | 0.00 | CONWAY | ORANGE | 5 | 0 | 0.00 |
| AUBURNDALE | POLK | 143 | 22 | 15.38 | COOPER CITY | BROWARD | 231 | 21 | 9.09 |
| AVON PARK | HIGHLANDS | 121 | 8 | 6.61 | CORAL GABLES | DADE | 751 | 52 | 6.92 |
| AZALEA PARK | ORANGE | 1 | 0 | 0.00 | CORAL SPRINGS | BROWARD | 1326 | 79 | 5.96 |
| BAL HARBOR | DADE | 51 | 4 | 7.84 | CORAL WAY VILLAGE | DADE | 2 | 0 | 0.00 |
| BALDWIN | DUVAL | 17 | 3 | 17.65 | CORRY FIELD NAS | ESCAMBIA | 1 | 0 | 0.00 |
| BARTOW | POLK | 268 | 19 | 7.09 | CRAWFORDVILLE | WAKULLA | 2 | 0 | 0.00 |
| BAY HARBOR ISLANDS | DADE | 51 | 5 | 9.80 | CRESCENT CITY | PUTNAM | 40 | 2 | 5.00 |
| BELLE GLADE | PALM BEACH | 341 | 31 | 9.09 | CRESTVIEW | OKALOOSA | 162 | 15 | 9.26 |
| BELLE ISLE | ORANGE | 3 | 2 | 66.67 | CROSS CITY | DIXIE | 8 | 1 | 12.50 |
| BELLEAIR | PINELLAS | 16 | 1 | 6.25 | CRYSTAL RIVER | CITRUS | 150 | 19 | 12.67 |
| BELLEAIR BEACH | PINELLAS | 15 | 2 | 13.33 | CUTLER RIDGE | DADE | 25 | 0 | 0.00 |
| BELLEAIR BLUFFS | PINELLAS | 31 | 2 | 6.45 | DADE CITY | PASCO | 137 | 8 | 5.84 |
| BELLEVUE | MARION | 41 | 1 | 2.44 | DANIA | BROWARD | 494 | 58 | 11.74 |
| BISCAYNE GARDENS | DADE | 3 | 1 | 33.33 | DAVENPORT | POLK | 4 | 0 | 0.00 |
| BISCAYNE PARK | DADE | 26 | 3 | 11.54 | DAVIE | BROWARD | 1121 | 124 | 11.06 |
| BLOUNTSTOWN | CALHOUN | 20 | 4 | 20.00 | DAYTONA BEACH | VOLUSIA | 2614 | 281 | 10.75 |
| BOCA RATON | PALM BEACH | 1540 | 158 | 10.26 | DAYTONA BEACH AIRPORT | VOLUSIA | 2 | 0 | 0.00 |
| BONIFAY | HOLMES | 16 | 3 | 18.75 | DAYTONA BEACH SHORES | VOLUSIA | 42 | 10 | 23.81 |
| BONITA SPRINGS | LEE | 45 | 9 | 20.00 | DE BARY | VOLUSIA | 25 | 5 | 20.00 |
| BOWLING GREEN | HARDEE | 7 | 1 | 14.29 | DE LAND | VOLUSIA | 236 | 35 | 14.83 |
| BOYNTON BEACH | PALM BEACH | 704 | 72 | 10.23 | DE LEON SPRINGS | VOLUSIA | 13 | 4 | 30.77 |
| BRADENTON | MANATEE | 197 | 28 | 14.21 | DEERFIELD BEACH | BROWARD | 852 | 64 | 7.51 |
| BRADENTON BEACH | MANATEE | 1 | 0 | 0.00 | DEFUNIAK SPRINGS | WALTON | 46 | 5 | 10.87 |
| BRANDON | HILLSBOROUGH | 87 | 5 | 5.75 | DELRAY BEACH | PALM BEACH | 680 | 57 | 8.38 |
| BRANFORD | SUWANNEE | 4 | 1 | 25.00 | DELTONA | VOLUSIA | 97 | 9 | 9.28 |
| BRENT | ESCAMBIA | 119 | 20 | 16.81 | DOCTORS INLET | CLAY | 1 | 0 | 0.00 |
| BRINY BREEZES | PALM BEACH | 1 | 0 | 0.00 | DUNDEE | POLK | 4 | 0 | 0.00 |
| BRISTOL | LIBERTY | 2 | 0 | 0.00 | DUNEDIN | PINELLAS | 398 | 50 | 12.56 |
| BROADVIEW PARK | BROWARD | 4 | 1 | 25.00 | DUNNELLON | MARION | 21 | 1 | 4.76 |
| BRONSON | LEVY | 10 | 3 | 30.00 | EAGLE LAKE | POLK | 21 | 3 | 14.29 |
| BROOKSVILLE | HERNANDO | 72 | 10 | 13.89 | EAST LAKE ORIENT PARK | HILLSBOROUGH | 3 | 0 | 0.00 |
| BUNNELL | FLAGLER | 22 | 3 | 13.64 | EAST NAPLES | COLLIER | 292 | 50 | 17.12 |
| BUSHNELL | SUMTER | 32 | 6 | 18.75 | EATONVILLE | ORANGE | 33 | 0 | 0.00 |
| CALLAHAN | NASSAU | 21 | 5 | 23.81 | ECKERD COLLEGE | PINELLAS | 1 | 0 | 0.00 |
| CALLOWAY | BAY | 73 | 13 | 17.81 | EDGEWATER | VOLUSIA | 173 | 21 | 12.14 |
| CANOVA BEACH | BREVARD | 1 | 0 | 0.00 | EDGEWOOD | ORANGE | 24 | 3 | 12.50 |
| CANTONMENT | ESCAMBIA | 22 | 6 | 27.27 | EGLIN | OKALOOSA | 2 | 0 | 0.00 |
| CAPE CANAVERAL | BREVARD | 74 | 23 | 31.08 | EGLIN AFB | OKALOOSA | 1 | 0 | 0.00 |
| CAPE CORAL | LEE | 932 | 111 | 11.91 | EGYPT LAKE | HILLSBOROUGH | 2 | 0 | 0.00 |
| CAROL CITY | DADE | 161 | 5 | 3.11 | EL PORTAL | DADE | 39 | 2 | 5.13 |
| CARRABELLE | FRANKLIN | 3 | 1 | 33.33 | ELLYSON FIELD NAS | ESCAMBIA | 2 | 0 | 0.00 |
| CARVER RANCH ESTATES | BROWARD | 4 | 0 | 0.00 | ENGLEWOOD | CHARLOTTE | 75 | 19 | 25.33 |
| CASSELBERRY | SEMINOLE | 282 | 51 | 18.09 | ENGLEWOOD | SARASOTA | 9 | 2 | 22.22 |
| CECIL FIELD NAS | DUVAL | 2 | 1 | 50.00 | EUSTIS | LAKE | 149 | 12 | 8.05 |
| CEDAR GROVE | BAY | 47 | 8 | 17.02 | EVERGLADES | COLLIER | 6 | 1 | 16.67 |
| CEDAR KEY | LEVY | 1 | 0 | 0.00 | FELLSMERE | INDIAN RIVER | 10 | 1 | 10.00 |
| CENTURY | ESCAMBIA | 12 | 4 | 33.33 | FERNANDINA BEACH | NASSAU | 75 | 14 | 18.67 |
| CHATTAHOOCHEE | GADSDEN | 17 | 4 | 23.53 | FLAGLER BEACH | FLAGLER | 39 | 5 | 12.82 |
| CHIEFLAND | LEVY | 28 | 6 | 21.43 | FLORIDA A&M UNIVERSITY | LEON | 50 | 2 | 4.00 |
| CHIPLEY | WASHINGTON | 20 | 4 | 20.00 | FLORIDA ATLANTIC UNIV. | PALM BEACH | 19 | 2 | 10.53 |
| CLAIR-MEL | HILLSBOROUGH | 13 | 2 | 15.38 | FLORIDA CITY | DADE | 33 | 3 | 9.09 |
| CLEARWATER | PINELLAS | 1588 | 200 | 12.59 | FLORIDA SOUTHERN COLL. | POLK | 1 | 0 | 0.00 |
| CLERMONT | LAKE | 131 | 14 | 10.69 | FLORIDA STATE UNIV. | LEON | 11 | 1 | 9.09 |

▶ Alcohol-Related Crashes by City

Florida Traffic
Crash Facts 1 9 9 4

| City | County | Total Crashes | Alcohol-Related Crashes | Alcohol-Related Crashes as Percent of Total | City | County | Total Crashes | Alcohol-Related Crashes | Alcohol-Related Crashes as Percent of Total |
|----------------------|--------------|---------------|-------------------------|---|------------------------|--------------|---------------|-------------------------|---|
| FORT MEADE | POLK | 28 | 6 | 21.43 | ISLANDIA | DADE | 1 | 0 | 0.00 |
| FORT MYERS | LEE | 1321 | 142 | 10.75 | JACKSONVILLE | DUVAL | 11543 | 1049 | 9.09 |
| FORT MYERS BEACH | LEE | 44 | 16 | 36.36 | JACKSONVILLE BEACH | DUVAL | 383 | 64 | 16.71 |
| FORT MYERS SE | LEE | 11 | 5 | 45.45 | JACKSONVILLE NAS | DUVAL | 3 | 0 | 0.00 |
| FORT MYERS SW | LEE | 66 | 16 | 24.24 | JACKSONVILLE UNIV. | DUVAL | 5 | 2 | 40.00 |
| FORT PIERCE | ST. LUCIE | 552 | 60 | 10.87 | JASPER | HAMILTON | 17 | 5 | 29.41 |
| FORT PIERCE NW | ST. LUCIE | 29 | 3 | 10.34 | JAY | SANTA ROSA | 3 | 1 | 33.33 |
| FORT WHITE | COLUMBIA | 3 | 1 | 33.33 | JENSEN BEACH | MARTIN | 89 | 25 | 28.09 |
| FREEPORT | WALTON | 6 | 2 | 33.33 | JUNO BEACH | PALM BEACH | 29 | 10 | 34.48 |
| FROSTPROOF | POLK | 34 | 3 | 8.82 | JUPITER | PALM BEACH | 597 | 56 | 9.38 |
| FRUITLAND PARK | LAKE | 94 | 16 | 17.02 | JUPITER INLET COLONY | PALM BEACH | 2 | 0 | 0.00 |
| FT. MYERS VIL/PIN MN | LEE | 3 | 0 | 0.00 | JUPITER ISLAND | MARTIN | 3 | 0 | 0.00 |
| FT. LAUDERDALE | BROWARD | 4604 | 435 | 9.45 | KENDALL | DADE | 92 | 13 | 14.13 |
| FT. WALTON BEACH | OKALOOSA | 282 | 46 | 16.31 | KENNEDY SPACE CENTER | BREVARD | 34 | 2 | 5.88 |
| GAINESVILLE | ALACHUA | 1916 | 186 | 9.71 | KENNETH CITY | PINELLAS | 83 | 9 | 10.84 |
| GIFFORD | INDIAN RIVER | 9 | 1 | 11.11 | KEY BISCAYNE | DADE | 3 | 0 | 0.00 |
| GOLDEN BEACH | DADE | 8 | 2 | 25.00 | KEY COLONY BEACH | MONROE | 9 | 2 | 22.22 |
| GOLDEN GLADES | DADE | 28 | 0 | 0.00 | KEY LARGO | MONROE | 185 | 40 | 21.62 |
| GOULDS | DADE | 20 | 4 | 20.00 | KEY WEST | MONROE | 366 | 75 | 20.49 |
| GRACEVILLE | JACKSON | 20 | 2 | 10.00 | KEYSTONE HEIGHTS | CLAY | 6 | 1 | 16.67 |
| GRAND RIDGE | JACKSON | 4 | 0 | 0.00 | KISSIMMEE | OSCEOLA | 486 | 66 | 13.58 |
| GREEN COVE SPRINGS | CLAY | 33 | 4 | 12.12 | LA BELLE | HENDRY | 49 | 5 | 10.20 |
| GREENACRES CITY | PALM BEACH | 266 | 25 | 9.40 | LA CROSSE | ALACHUA | 1 | 0 | 0.00 |
| GREENVILLE | MADISON | 1 | 0 | 0.00 | LADY LAKE | LAKE | 59 | 5 | 8.47 |
| GRETNA | GADSDEN | 1 | 0 | 0.00 | LAKE ALFRED | POLK | 32 | 3 | 9.38 |
| GROVELAND | LAKE | 34 | 7 | 20.59 | LAKE BUENA VISTA | ORANGE | 65 | 3 | 4.62 |
| GULF BREEZE | SANTA ROSA | 130 | 18 | 13.85 | LAKE BUTLER | UNION | 11 | 2 | 18.18 |
| GULF STREAM | PALM BEACH | 12 | 2 | 16.67 | LAKE CARROLL | HILLSBOROUGH | 6 | 0 | 0.00 |
| GULFPORT | PINELLAS | 129 | 11 | 8.53 | LAKE CITY | COLUMBIA | 143 | 22 | 15.38 |
| HACIENDA | BROWARD | 2 | 0 | 0.00 | LAKE CLARKE SHORES | PALM BEACH | 29 | 1 | 3.45 |
| HAINES CITY | POLK | 313 | 26 | 8.31 | LAKE FOREST | BROWARD | 5 | 1 | 20.00 |
| HALLANDALE | BROWARD | 700 | 30 | 4.29 | LAKE HAMILTON | POLK | 23 | 4 | 17.39 |
| HASTINGS | SAINT JOHNS | 13 | 3 | 23.08 | LAKE HELEN | VOLUSIA | 11 | 4 | 36.36 |
| HAVANA | GADSDEN | 12 | 5 | 41.67 | LAKE HOLLOWAY | POLK | 1 | 0 | 0.00 |
| HAVERTHILL | PALM BEACH | 16 | 2 | 12.50 | LAKE MAGDALENE | HILLSBOROUGH | 53 | 4 | 7.55 |
| HAWTHORNE | ALACHUA | 22 | 4 | 18.18 | LAKE MARY | SEMINOLE | 100 | 19 | 19.00 |
| HIALEAH | DADE | 3153 | 210 | 6.66 | LAKE PARK | PALM BEACH | 122 | 8 | 6.56 |
| HIALEAH GARDENS | DADE | 140 | 11 | 7.86 | LAKE PLACID | HIGHLANDS | 8 | 0 | 0.00 |
| HIGH SPRINGS | ALACHUA | 49 | 2 | 4.08 | LAKE WALES | POLK | 151 | 28 | 18.54 |
| HIGHLAND BEACH | PALM BEACH | 17 | 1 | 5.88 | LAKE WORTH | PALM BEACH | 927 | 100 | 10.79 |
| HILLIARD | NASSAU | 22 | 3 | 13.64 | LAKELAND | POLK | 1351 | 167 | 12.36 |
| HILLSBORO BEACH | BROWARD | 17 | 4 | 23.53 | LAND O'LAKES | PASCO | 29 | 3 | 10.34 |
| HOBE SOUND | MARTIN | 45 | 7 | 15.56 | LANTANA | PALM BEACH | 114 | 16 | 14.04 |
| HOLLY HILL | VOLUSIA | 152 | 30 | 19.74 | LARGO | PINELLAS | 737 | 146 | 19.81 |
| HOLLYWOOD | BROWARD | 2207 | 203 | 9.20 | LAUDERDALE LAKES | BROWARD | 546 | 30 | 5.49 |
| HOLMES BEACH | MANATEE | 44 | 10 | 22.73 | LAUDERDALE-BY-THE-SEA | BROWARD | 43 | 8 | 18.60 |
| HOMESTEAD | DADE | 330 | 53 | 16.06 | LAUDERHILL | BROWARD | 692 | 30 | 4.34 |
| HOMOSASSA SPRINGS | CITRUS | 2 | 0 | 0.00 | LAUREL HILL | OKALOOSA | 3 | 2 | 66.67 |
| HORSESHOE BEACH | DIXIE | 1 | 1 | 100.00 | LAWTEY | BRADFORD | 6 | 0 | 0.00 |
| HOWEY-IN-THE-HILLS | LAKE | 4 | 0 | 0.00 | LAYTON | MONROE | 4 | 0 | 0.00 |
| HYPOLUXO | PALM BEACH | 15 | 0 | 0.00 | LAZY LAKE VILLAGE | BROWARD | 5 | 0 | 0.00 |
| IMMOKALEE | COLLIER | 294 | 71 | 24.15 | LEALMAN | PINELLAS | 6 | 1 | 16.67 |
| INDIALANTIC | BREVARD | 37 | 3 | 8.11 | LEE CO. AIRPORT POLICE | LEE | 37 | 2 | 5.41 |
| INDIAN CREEK VILLAGE | DADE | 22 | 2 | 9.09 | LEE FIELD NAS | CLAY | 1 | 0 | 0.00 |
| INDIAN HARBOUR BEACH | BREVARD | 30 | 7 | 23.33 | LEESBURG | LAKE | 363 | 38 | 10.47 |
| INDIAN RIVER SHORES | INDIAN RIVER | 2 | 0 | 0.00 | LEHIGH ACRES | LEE | 24 | 7 | 29.17 |
| INDIAN ROCKS BEACH | PINELLAS | 38 | 12 | 31.58 | LEISURE CITY | DADE | 1 | 0 | 0.00 |
| INDIAN SHORES | PINELLAS | 26 | 8 | 30.77 | LETO | HILLSBOROUGH | 1 | 0 | 0.00 |
| INDIANTOWN | MARTIN | 46 | 22 | 47.83 | LIGHTHOUSE POINT | BROWARD | 203 | 29 | 14.29 |
| INGLIS | LEVY | 6 | 2 | 33.33 | LIVE OAK | SUWANNEE | 74 | 7 | 9.46 |
| INTERLACHEN | PUTNAM | 27 | 6 | 22.22 | LOCKHART | ORANGE | 3 | 1 | 33.33 |
| INVERNESS | CITRUS | 64 | 10 | 15.63 | LONGBOAT KEY | MANATEE | 7 | 0 | 0.00 |
| ISLAMORADA | MONROE | 48 | 19 | 39.58 | LONGBOAT KEY | SARASOTA | 21 | 2 | 9.52 |

▶ Alcohol-Related Crashes by City

Florida Traffic
Crash Facts 1 9 9 4

| City | County | Total Crashes | Alcohol-Related Crashes | Alcohol-Related Crashes as Percent of Total | City | County | Total Crashes | Alcohol-Related Crashes | Alcohol-Related Crashes as Percent of Total |
|-----------------------|--------------|---------------|-------------------------|---|----------------------|--------------|---------------|-------------------------|---|
| LONGWOOD | SEMINOLE | 184 | 24 | 13.04 | OCEAN CITY | OKALOOSA | 17 | 2 | 11.76 |
| LYNN HAVEN | BAY | 91 | 8 | 8.79 | OCEAN RIDGE | PALM BEACH | 9 | 2 | 22.22 |
| MACCLENNY | BAKER | 47 | 11 | 23.40 | OCOOE | ORANGE | 174 | 18 | 10.34 |
| MACDILL AFB | HILLSBOROUGH | 5 | 0 | 0.00 | OKALOOSA CNTY ARPT | OKALOOSA | 4 | 0 | 0.00 |
| MADEIRA BEACH | PINELLAS | 72 | 18 | 25.00 | OKEECHOBEE | OKEECHOBEE | 88 | 14 | 15.91 |
| MADISON | MADISON | 39 | 3 | 7.69 | OLDSMAR | PINELLAS | 124 | 12 | 9.68 |
| MAITLAND | ORANGE | 161 | 13 | 8.07 | ONECO | MANATEE | 5 | 1 | 20.00 |
| MALABAR | BREVARD | 9 | 0 | 0.00 | OPA LOCKA | DADE | 144 | 8 | 5.56 |
| MALONE | JACKSON | 2 | 1 | 50.00 | ORANGE CITY | VOLUSIA | 82 | 9 | 10.98 |
| MANALAPAN | PALM BEACH | 10 | 1 | 10.00 | ORANGE PARK | CLAY | 82 | 20 | 24.39 |
| MANGONIA PARK | PALM BEACH | 81 | 4 | 4.94 | ORLANDO | ORANGE | 4448 | 374 | 8.41 |
| MARATHON | MONROE | 152 | 22 | 14.47 | ORLOVISTA | ORANGE | 4 | 0 | 0.00 |
| MARGATE | BROWARD | 627 | 76 | 12.12 | ORMOND BEACH | VOLUSIA | 339 | 59 | 17.40 |
| MARIANNA | JACKSON | 96 | 15 | 15.63 | ORMOND BY THE SEA | VOLUSIA | 30 | 11 | 36.67 |
| MARY ESTHER | OKALOOSA | 12 | 1 | 8.33 | OTTER CREEK | LEVY | 2 | 0 | 0.00 |
| MASCOTTE | LAKE | 18 | 2 | 11.11 | OVIDEO | SEMINOLE | 164 | 19 | 11.59 |
| MAYO | LAFAYETTE | 3 | 1 | 33.33 | PAHOKEE | PALM BEACH | 54 | 5 | 9.26 |
| MAYPORT NAS | DUVAL | 2 | 0 | 0.00 | PALATKA | PUTNAM | 330 | 30 | 9.09 |
| MEDLEY | DADE | 187 | 5 | 2.67 | PALM BAY | BREVARD | 455 | 76 | 16.70 |
| MELBOURNE | BREVARD | 727 | 111 | 15.27 | PALM BEACH | PALM BEACH | 137 | 19 | 13.87 |
| MELBOURNE BEACH | BREVARD | 11 | 2 | 18.18 | PALM BEACH AFB | PALM BEACH | 1 | 0 | 0.00 |
| MELROSE PARK | BROWARD | 2 | 1 | 50.00 | PALM BEACH GARDENS | PALM BEACH | 477 | 57 | 11.95 |
| MEMPHIS | MANATEE | 1 | 0 | 0.00 | PALM BEACH SHORES | PALM BEACH | 4 | 1 | 25.00 |
| MERRITT ISLAND | BREVARD | 361 | 83 | 22.99 | PALM CITY | MARTIN | 35 | 5 | 14.29 |
| MEXICO BEACH | BAY | 9 | 0 | 0.00 | PALM RIVER/CLAIR MEL | HILLSBOROUGH | 9 | 1 | 11.11 |
| MIAMI | DADE | 8074 | 577 | 7.15 | PALM SPRINGS | PALM BEACH | 105 | 9 | 8.57 |
| MIAMI BEACH | DADE | 2094 | 298 | 14.23 | PALMETTO | MANATEE | 304 | 34 | 11.18 |
| MIAMI LAKES | DADE | 64 | 2 | 3.13 | PANAMA CITY | BAY | 561 | 97 | 17.29 |
| MIAMI SHORES | DADE | 267 | 19 | 7.12 | PANAMA CITY BEACH | BAY | 197 | 35 | 17.77 |
| MIAMI SPRINGS | DADE | 42 | 2 | 4.76 | PARKER | BAY | 19 | 6 | 31.58 |
| MICANOPY | ALACHUA | 12 | 0 | 0.00 | PARKLAND | BROWARD | 40 | 3 | 7.50 |
| MICC. INDIAN RES. | DADE | 3 | 0 | 0.00 | PARRISH | MANATEE | 1 | 0 | 0.00 |
| MILTON | SANTA ROSA | 63 | 6 | 9.52 | PATRICK AFB | BREVARD | 4 | 1 | 25.00 |
| MIMS | BREVARD | 30 | 7 | 23.33 | PEMBROKE PARK | BROWARD | 145 | 17 | 11.72 |
| MINNEOLA | LAKE | 2 | 1 | 50.00 | PEMBROKE PINES | BROWARD | 916 | 44 | 4.80 |
| MIRAMAR | BROWARD | 444 | 39 | 8.78 | PENSACOLA | ESCAMBIA | 846 | 145 | 17.14 |
| MONTICELLO | JEFFERSON | 15 | 0 | 0.00 | PERRINE | DADE | 21 | 1 | 4.76 |
| MOORE HAVEN | GLADES | 10 | 1 | 10.00 | PERRY | TAYLOR | 156 | 22 | 14.10 |
| MOUNT DORA | LAKE | 157 | 10 | 6.37 | PIERSON | VOLUSIA | 7 | 1 | 14.29 |
| MULBERRY | POLK | 30 | 4 | 13.33 | PINE HILLS | ORANGE | 91 | 4 | 4.40 |
| MYRTLE GROVE | ESCAMBIA | 44 | 6 | 13.64 | PINELLAS PARK | PINELLAS | 800 | 123 | 15.38 |
| NAPLES | COLLIER | 369 | 42 | 11.38 | PINEWOOD | DADE | 51 | 5 | 9.80 |
| NARANJA | DADE | 8 | 0 | 0.00 | PLANT CITY | HILLSBOROUGH | 601 | 56 | 9.32 |
| NEPTUNE BEACH | DUVAL | 50 | 12 | 24.00 | PLANTATION | BROWARD | 1222 | 74 | 6.06 |
| NEW PORT RICHEY | PASCO | 348 | 34 | 9.77 | POLK CITY | POLK | 12 | 1 | 8.33 |
| NEW SMYRNA BEACH | VOLUSIA | 341 | 54 | 15.84 | POMPAÑO BEACH | BROWARD | 1896 | 203 | 10.71 |
| NEWBERRY | ALACHUA | 34 | 6 | 17.65 | POMPAÑO BEACH HLNDS | BROWARD | 1 | 0 | 0.00 |
| NICEVILLE | OKALOOSA | 91 | 15 | 16.48 | PONCE INLET | VOLUSIA | 15 | 5 | 33.33 |
| NOKOMIS/LAUREL | SARASOTA | 1 | 1 | 100.00 | PORT CHARLOTTE | CHARLOTTE | 441 | 80 | 18.14 |
| NORTH ANDREWS GARDENS | BROWARD | 2 | 0 | 0.00 | PORT ORANGE | VOLUSIA | 367 | 49 | 13.35 |
| NORTH BAY VILLAGE | DADE | 53 | 5 | 9.43 | PORT RICHEY | PASCO | 88 | 12 | 13.64 |
| NORTH FORT MYERS | LEE | 71 | 19 | 26.76 | PORT SALERNO | MARTIN | 50 | 20 | 40.00 |
| NORTH LAUDERDALE | BROWARD | 205 | 29 | 14.15 | PORT ST. JOE | GULF | 14 | 3 | 21.43 |
| NORTH MIAMI | DADE | 1389 | 40 | 2.88 | PORT ST. LUCIE | SAINT LUCIE | 679 | 77 | 11.34 |
| NORTH MIAMI BEACH | DADE | 894 | 50 | 5.59 | PUNTA GORDA | CHARLOTTE | 183 | 17 | 9.29 |
| NORTH NAPLES | COLLIER | 182 | 26 | 14.28 | QUINCY | GADSDEN | 178 | 22 | 12.36 |
| NORTH PALM BEACH | PALM BEACH | 117 | 12 | 10.26 | REDINGTON BEACH | PINELLAS | 11 | 0 | 0.00 |
| NORTH PORT | SARASOTA | 55 | 16 | 29.09 | REDINGTON SHORES | PINELLAS | 28 | 10 | 35.71 |
| NORTH REDINGTON BEACH | PINELLAS | 8 | 2 | 25.00 | RICHMOND HEIGHTS | DADE | 11 | 0 | 0.00 |
| NORWOOD | DADE | 1 | 1 | 100.00 | RIDGEWOOD HEIGHTS | SARASOTA | 2 | 1 | 50.00 |
| OAK HILL | VOLUSIA | 14 | 0 | 0.00 | RIVERLAND | BROWARD | 2 | 0 | 0.00 |
| OAKLAND | ORANGE | 17 | 1 | 5.88 | RIVIERA BEACH | PALM BEACH | 485 | 51 | 10.52 |
| OAKLAND PARK | BROWARD | 1112 | 98 | 8.81 | ROCKLEDGE | BREVARD | 163 | 14 | 8.59 |
| OCALA | MARION | 1003 | 92 | 9.17 | ROYAL PALM BEACH | PALM BEACH | 190 | 27 | 14.21 |
| OCEAN BREEZE PARK | MARTIN | 1 | 0 | 0.00 | RUSKIN | HILLSBOROUGH | 20 | 3 | 15.00 |

▶ Alcohol-Related Crashes by City

Florida Traffic
Crash Facts 1 9 9 4

| City | County | Total Crashes | Alcohol-Related Crashes | Alcohol-Related Crashes as Percent of Total | City | County | Total Crashes | Alcohol-Related Crashes | Alcohol-Related Crashes as Percent of Total |
|------------------------|--------------|---------------|-------------------------|---|-------------------|--------------|---------------|-------------------------|---|
| SAFETY HARBOR | PINELLAS | 157 | 12 | 8.92 | VALPARAISO | OKALOOSA | 19 | 3 | 15.79 |
| SAMOSET | MANATEE | 2 | 1 | 50.00 | VENICE | SARASOTA | 147 | 11 | 7.48 |
| SAN ANTONIO | PASCO | 1 | 0 | 0.00 | VENICE SOUTH | SARASOTA | 2 | 1 | 50.00 |
| SANFORD | SEMINOLE | 494 | 62 | 12.55 | VERNON | WASHINGTON | 8 | 3 | 37.50 |
| SANIBEL | LEE | 56 | 12 | 21.43 | VERO BEACH | INDIAN RIVER | 319 | 29 | 9.09 |
| SANTA ROSA BEACH | WALTON | 1 | 1 | 100.00 | VIRGINIA GARDENS | DADE | 22 | 2 | 9.09 |
| SARASOTA | SARASOTA | 1156 | 188 | 16.26 | WABASSO | INDIAN RIVER | 4 | 0 | 0.00 |
| SARASOTA S | SARASOTA | 5 | 3 | 60.00 | WAKULLA | WAKULLA | 1 | 0 | 0.00 |
| SARASOTA SPRINGS | SARASOTA | 1 | 0 | 0.00 | WALDO | ALACHUA | 11 | 0 | 0.00 |
| SATELLITE BEACH | BREVARD | 47 | 9 | 19.15 | WARRINGTON | ESCAMBIA | 84 | 23 | 27.38 |
| SAUFLEY FIELD NAS | ESCAMBIA | 1 | 0 | 0.00 | WAUCHULA | HARDEE | 88 | 10 | 11.36 |
| SEA RANCH LAKES | BROWARD | 6 | 1 | 16.67 | WELAKA | PUTNAM | 5 | 1 | 20.00 |
| SEBASTIAN | INDIAN RIVER | 66 | 7 | 10.60 | WEST BRADENTON | MANATEE | 701 | 72 | 10.27 |
| SEBRING | HIGHLANDS | 130 | 16 | 12.31 | WEST EAU GALLIE | BREVARD | 1 | 0 | 0.00 |
| SEMINOLE | PINELLAS | 239 | 32 | 13.39 | WEST GATE | PALM BEACH | 1 | 0 | 0.00 |
| SEMINOLE PARK | PINELLAS | 4 | 1 | 25.00 | WEST HOLLYWOOD | BROWARD | 4 | 2 | 50.00 |
| SEVILLE | VOLUSIA | 4 | 0 | 0.00 | WEST MELBOURNE | BREVARD | 140 | 20 | 14.29 |
| SEWALLS POINT | MARTIN | 22 | 3 | 13.64 | WEST MIAMI | DADE | 81 | 8 | 9.88 |
| SHALIMAR | OKALOOSA | 3 | 0 | 0.00 | WEST PALM BEACH | PALM BEACH | 1725 | 145 | 8.41 |
| SILVER SPRINGS SHORES | MARION | 1 | 0 | 0.00 | WEST PENSACOLA | ESCAMBIA | 66 | 14 | 21.21 |
| SKY LAKE | ORANGE | 3 | 0 | 0.00 | WEST WINTER HAVEN | POLK | 2 | 0 | 0.00 |
| SNEADS | JACKSON | 16 | 3 | 18.75 | WEWAHITCHKA | GULF | 1 | 0 | 0.00 |
| SOUTH BAY | PALM BEACH | 28 | 2 | 7.14 | WHITE SPRINGS | HAMILTON | 4 | 1 | 25.00 |
| SOUTH DAYTONA | VOLUSIA | 105 | 21 | 20.00 | WILDWOOD | SUMTER | 34 | 4 | 11.76 |
| SOUTH MIAMI | DADE | 224 | 11 | 4.91 | WILLISTON | LEVY | 54 | 3 | 5.56 |
| SOUTH MIAMI HEIGHTS | DADE | 1 | 0 | 0.00 | WILTON MANORS | BROWARD | 217 | 33 | 15.21 |
| SOUTH PASADENA | PINELLAS | 86 | 12 | 13.95 | WINDERMERE | ORANGE | 11 | 1 | 9.09 |
| SOUTH PATRICK SHORES | BREVARD | 3 | 1 | 33.33 | WINSTON | POLK | 1 | 0 | 0.00 |
| SPRINGFIELD | BAY | 109 | 16 | 14.68 | WINTER GARDEN | ORANGE | 163 | 19 | 11.66 |
| ST. AUGUSTINE | SAINT JOHNS | 381 | 54 | 14.71 | WINTER HAVEN | POLK | 486 | 21 | 4.32 |
| ST. AUGUSTINE BEACH | SAINT JOHNS | 36 | 8 | 22.22 | WINTER PARK | ORANGE | 339 | 44 | 12.98 |
| ST. CLOUD | OSCEOLA | 226 | 25 | 11.06 | WINTER SPRINGS | SEMINOLE | 137 | 13 | 9.49 |
| ST. PETERSBURG | PINELLAS | 2945 | 378 | 12.83 | YULEE | NASSAU | 10 | 2 | 20.00 |
| ST. PETERSBURG BEACH | PINELLAS | 173 | 30 | 17.34 | ZEPHYRHILLS | PASCO | 123 | 7 | 5.69 |
| STARKE | BRADFORD | 179 | 19 | 10.61 | ZOLFO SPRINGS | HARDEE | 7 | 0 | 0.00 |
| STEINHATCHEE | TAYLOR | 5 | 0 | 0.00 | | | | | |
| STETSON UNIVERSITY | VOLUSIA | 1 | 0 | 0.00 | | | | | |
| STUART | MARTIN | 524 | 67 | 12.78 | | | | | |
| SUNNY ISLES | DADE | 5 | 1 | 20.00 | | | | | |
| SUNRISE | BROWARD | 658 | 51 | 7.75 | | | | | |
| SURFSIDE | DADE | 120 | 3 | 2.50 | | | | | |
| SWEETWATER | DADE | 41 | 1 | 2.44 | | | | | |
| SWEETWATER CREEK | HILLSBOROUGH | 2 | 0 | 0.00 | | | | | |
| TALLAHASSEE | LEON | 3680 | 364 | 9.89 | | | | | |
| TAMARAC | BROWARD | 837 | 43 | 5.14 | | | | | |
| TAMPA | HILLSBOROUGH | 5967 | 502 | 8.41 | | | | | |
| TARPON SPRINGS | PINELLAS | 329 | 42 | 12.76 | | | | | |
| TAVARES | LAKE | 86 | 9 | 10.46 | | | | | |
| TAVERNIER | MONROE | 44 | 9 | 20.45 | | | | | |
| TEMPLE TERRACE | HILLSBOROUGH | 202 | 17 | 8.41 | | | | | |
| TEQUESTA VILLAGE | PALM BEACH | 24 | 7 | 29.17 | | | | | |
| TICE | LEE | 9 | 0 | 0.00 | | | | | |
| TITUSVILLE | BREVARD | 432 | 60 | 13.89 | | | | | |
| TREASURE ISLAND | PINELLAS | 90 | 26 | 28.89 | | | | | |
| TRENTON | GILCHRIST | 5 | 1 | 20.00 | | | | | |
| TYNDALL AFB | BAY | 2 | 0 | 0.00 | | | | | |
| UMATILLA | LAKE | 28 | 2 | 7.14 | | | | | |
| UNION PARK | ORANGE | 5 | 1 | 20.00 | | | | | |
| UNIV. OF CENTRAL FLA. | ORANGE | 11 | 1 | 9.09 | | | | | |
| UNIV. OF NORTH FLORIDA | DUVAL | 9 | 0 | 0.00 | | | | | |
| UNIV. OF S. FLORIDA | HILLSBOROUGH | 109 | 3 | 2.75 | | | | | |
| UNIV. OF WEST FLORIDA | ESCAMBIA | 9 | 1 | 11.11 | | | | | |
| UNIVERSITY OF FLORIDA | ALACHUA | 54 | 5 | 9.26 | | | | | |
| UNIVERSITY OF MIAMI | DADE | 4 | 0 | 0.00 | | | | | |
| UNIVERSITY OF TAMPA | HILLSBOROUGH | 2 | 0 | 0.00 | | | | | |