

FLORIDA

DEPARTMENT OF HIGHWAY SAFETY AND MOTOR VEHICLES



TRAFFIC CRASH STATISTICS REPORT 2003

A COMPILATION OF MOTOR VEHICLE CRASH DATA FROM
THE FLORIDA CRASH RECORDS DATABASE

FRED O. DICKINSON
EXECUTIVE DIRECTOR

OUR MISSION: MAKING HIGHWAYS SAFE

[HTTP://WWW.HSMV.STATE.FL.US](http://www.hsmv.state.fl.us)

2003 FLORIDA TRAFFIC CRASH STATISTICS

Traffic crashes	243,294
Drivers involved	362,024
Average crashes per day	667
Mileage Death Rate (per 100 million VM)	1.7
Fatalities	3,179
Fatal crashes	2,880
Injuries	221,639
Injury crashes	138,891
Property damage only crashes	101,523
Alcohol-related fatalities	1,096
Alcohol-related injuries	17,379
Alcohol-related crashes	22,752
Alcohol-related fatal crashes	997
Alcohol-related injury crashes	10,937
Pedestrians killed	509
Pedestrians injured	7,449
Pedestrian crashes	7,980
Bicyclists killed	95
Bicyclists injured	4,991
Bicycle crashes	5,393
Motorcyclists killed	339
Motorcyclists injured	5,973
Motorcycle crashes	6,635

Prepared By:

Office of Management Research and Development
Office of the Executive Director
Florida Department of Highway Safety and Motor Vehicles
Neil Kirkman Building, M.S. 04
Tallahassee, FL 32399-0505
Telephone Assistance:
(850) 488-4300

This publication is available on the
Department of Highway Safety and Motor Vehicles
World Wide Web Site at
<http://www.hsmv.state.fl.us>



State of Florida
DEPARTMENT OF
HIGHWAY SAFETY AND MOTOR VEHICLES

FRED O. DICKINSON
Executive Director

JEB BUSH
Governor

CHARLIE CRIST
Attorney General

TOM GALLAGHER
Chief Financial Officer

CHARLES H. BRONSON
Commissioner of Agriculture

August 2004

Dear Reader:

I am pleased to present the **2003 Florida Crash Statistics Report**. This report contains data from the Department's crash database, compiled from traffic crash reports completed by state and local law enforcement agencies.

In 2003, the number of miles driven on Florida's highways increased by 7 billion; however, the mileage death rate decreased from 1.8 deaths per hundred million miles driven in 2002, to 1.7 in 2003. Florida continued to see improvements in traffic safety in 2003, including a 2.9 percent decrease in the number of traffic crashes reported and investigated, and a 3.5 percent decrease in the number of crash-related injuries. Tragically, however, 3,179 lives were lost as a result of traffic crashes. Thirty five percent of traffic fatalities were alcohol related, and sixty percent of drivers and passengers killed were not wearing seat belts. Seventy percent of children ages 4 to 17 years old killed in crashes were not using safety equipment.

In the aggregate, crash statistics provide a comprehensive understanding of highway safety issues and assist in the development of education and enforcement programs in targeted areas. However, each statistic represents an individual story, ranging from a minor inconvenience to a major life-changing tragedy. Safety on Florida's highways affects all Floridians and we must continue to strive to reduce the needless deaths and injuries on our highways.

On behalf of the Department, I continue to extend appreciation and recognition to the law enforcement officers who, in addition to responding to the immediate needs of crash victims on the scene, also collect vital crash data that helps make highways safer in the future for Floridians, visitors and their families.

Sincerely,

A handwritten signature in cursive script that reads "Fred O. Dickinson".

Fred O. Dickinson
Executive Director

TABLE OF CONTENTS

2003 Florida Traffic Crash Statistics

SOURCE OF DATA	4
DEFINITION OF TERMS	5 - 6
STATE OF FLORIDA SUMMARY	7 - 8
Safety Equipment Use in Crashes	
Equipment Used by Drivers	9
Equipment Used by Vehicle Passengers	9
Equipment Used by Drivers and Vehicle Passengers	9
Equipment Used by Motorcyclists and Their Passengers	10
Equipment Used by Bicyclists and Their Passengers	10
Safety Equipment Use and Child Passengers	
Child Restraint Device and Safety Belt Use by Passenger Age Groups	11
Child Passengers Injured or Killed	11
Age of Drivers in Crashes	
Crash Rates for Florida Resident Drivers in All Crashes by Age Groups	12
Crash Rates for Florida Resident Drinking Drivers in All Crashes by Age Groups	12
Selected Age Groups	
Crash Rates for Florida Resident Drivers in All Crashes for a Selected Age Group (15 - 29)	13
Crash Rates for Florida Resident Drivers in All Crashes for a Selected Age Group (70 - 85+)	13
Crash Rates for Florida Resident Drinking Drivers in All Crashes for a Selected Age Group (15 - 29)	14
Crash Rates for Florida Resident Drinking Drivers in All Crashes for a Selected Age Group (70 - 85+)	14
Driver Profile	
Drivers Killed or Injured by Residence and Gender	15
Drivers Killed or Injured by Residence	15
Drivers Involved in Crashes by Age Groups	15
Persons in Crashes by Age and Gender	
Persons Killed	16
Persons Injured	17
Motorcyclists and Bicyclists Crash Trends	
Motorcyclists and Bicyclists Killed	18
Motorcyclists and Bicyclists Injured	18
Pedestrian Crash Trend	
Pedestrians Killed	19
Pedestrians Injured	19
Pedestrian Fatality Rate	20
Pedestrian Behavior	
Pedestrians Killed in Crashes by Age and Type of Actions	21
Pedestrians Injured in Crashes by Age and Type of Actions	21
Pedestrians in Crashes by Age and Percent Drinking	22
Pedestrians in Crashes by Injury Severity and Percent Drinking	22

TABLE OF CONTENTS (Continued)

Truck Passengers

Passengers Riding in Beds of Trucks by Age and Truck Types 23

Florida Motoring Environment

Motoring Environment 24

Holiday Traffic Fatalities 25

Traffic Crashes by Month

All Crashes 26

Fatal Crashes 26

Traffic Crashes by Day of Week and Time of Day

All Crashes/Fatal Crashes 27

Contributing Causes

Actions Attributed to Drivers Involved in Crashes 28

Environmental Causes

Lighting Conditions at the Time of Crash 29

Road Surface Conditions at the Time of Crash 29

Vehicle Harmful Events

Vehicle Harmful Events 30

County Data (1999 through 2003)

Crash History 31

Alcohol-Related Crash History 32

Fatality History 33

Alcohol-Related Fatality History 34

Injury History 35

Alcohol-Related Injury History 36

Vehicle and/or Property Damage Only Crash History 37

Motorcycle Fatality History 38

Motorcycle Injury History 39

Bicycle Fatality History 40

Bicycle Injury History 41

Pedestrian Fatality History 42

Pedestrian Injury History 43

Vehicle and Truck Information

Vehicle Types in Crashes 44

Contributing Causes of Drivers in Truck Crashes 44

Alcohol-Related Crashes by City/Locality

Total Crashes and Alcohol-Related Crashes by City/Locality 45 - 50

Appendix

Florida Traffic Crash Report Forms

Source of Data

2003 Florida Traffic Crash Statistics

The information contained in this Traffic Crash Facts booklet is extracted from law enforcement agency long-form reports of traffic crashes. A law enforcement officer must submit a long-form crash report when investigating:

- Motor vehicle crashes resulting in death or personal injury, or
- Motor vehicle crashes in which one or more of the following conditions occur:
 - Leaving the scene involving damage to an attended vehicle or property (Section 316.061 (1), F.S.), or
 - Driving while under the influence of alcoholic beverages, chemical substances, or controlled substances or with an unlawful blood alcohol level (Section 316.193, F.S.).

An investigating officer may report other traffic crashes on the long-form crash report. In particular, applicable statutes specify an officer's discretion to submit a long-form report in crashes where a vehicle is rendered inoperable to the degree that a wrecker is required to remove it from traffic.

Statutory revisions in 1983 and 1989 reduced the number of non-injury crashes required to be reported to the Department. Any presentation of historical data that includes such crashes, such as total traffic crash counts, will reflect these changes. Data on traffic crashes involving death, injury, or other criteria for law enforcement long-form reports as outlined above are not affected.

Please note:

A change in the method for calculation of percentages has been made to Tables 1, 1A-C, 2, 8, 12, 13, and 20 in the 2003 Crash Statistics Report. Caution should be exercised when making any comparison between the percentages of these tables with the same tables in prior year reports.

Definition of Terms

2003 Florida Traffic Crash Statistics

The following terms are defined as they apply to the crash data presented in this publication. These definitions may differ from legal or other uses of the same terms.

Alcohol-related traffic crash	A crash involving a driver and/or pedestrian for whom alcohol use was reported (does not presume intoxication).
Bicycle	A vehicle propelled solely by human power or a motorized bicycle propelled by a combination of human power and an electric helper motor rated at 200 watts or less (this term does not include a vehicle with a seat height less than 26 inches from the ground when the seat is adjusted to its highest position, or a scooter or similar device).
Bicyclist	The driver of a bicycle. A passenger on a bicycle is considered a vehicle passenger.
Driver	Unless otherwise indicated, the operator of a motor vehicle or bicycle. Driver data typically exclude uninjured persons presumed to have been operating hit-and-run, phantom, or properly parked vehicles.
Fatal traffic crash	A traffic crash that results in one or more fatalities within thirty days of occurrence.
Harmful events	Identifies the first and subsequent harmful events for each vehicle in a traffic crash.
Injury	Hurt, damage, or loss sustained by a person as a result of a traffic crash.
Possible injury	No visible signs of injury but complaint of pain or momentary unconsciousness.
Non-Incapacitating injury	Any visible injuries such as bruises, abrasions, limping, etc.
Incapacitating injury	Any visible signs of injury from a crash or person(s) who had to be carried from the scene.
Total injury	The sum of possible, non-incapacitating, and incapacitating injuries.
Injury crash	A non-fatal traffic crash that results in one or more injuries.
Moped	A motor-powered cycle with a pedal-activated motor and a maximum of two brake horsepower.
Motor vehicle	Any motorized vehicle not operating on rails.

Definition of Terms

(Continued)

2003 Florida Traffic Crash Facts

Motorcycle	A motor vehicle, with a seat or saddle for the driver's use, traveling with no more than three wheels in contact with the ground, excluding a tractor or a moped.
Motorcyclist	The driver of a motorcycle. A passenger on a motorcycle is considered a vehicle passenger.
Vehicle and/or Property damage only crash	Loss of all or part of an individual's vehicle and/or property resulting from a traffic crash not involving injury to a person.
Traffic crash	A crash involving at least one motor vehicle on a roadway that is open to the public.
Traffic fatality	The death of a person as a direct result of a traffic crash within thirty days of the crash occurrence.
Vehicle occupants	Drivers and passengers of automobiles, vans, trucks, buses, and motor homes.
Long form	Refers to a crash report prepared by a law enforcement officer where there has been a crash resulting in bodily injury, the death of a person or where a specified criminal offense has been committed.
Short form	Refers to a crash report in which the threshold of the long form does not apply. Therefore, a long form report is not prepared. In crashes where apparent damage is less than \$500, the law enforcement officer shall provide each party involved in the crash a short form prescribed by the state, to be completed by each party or the parties.

State of Florida Summary

2003 Florida Traffic Crash Statistics

ALL CRASHES

Compared to 2002, there was a 2.9% decrease in traffic crashes investigated and reported.

Traffic crashes	243,294
Drivers involved	362,024
Average crashes per day	667

FATAL CRASHES AND FATALITIES

Compared to 2002, there was a 1.1% increase in traffic fatalities.

Fatalities	3,179
Fatal crashes	2,880

INJURY CRASHES

Compared to 2002, there was a 3.5% decrease in traffic injuries.

Possible injuries	118,943
Non-incapacitating injuries	73,104
Incapacitating injuries	29,592
Total injuries	221,639
Injury crashes	138,891

ALCOHOL-RELATED CRASHES AND FATALITIES

34.5% of traffic fatalities and 9.4% of traffic crashes were alcohol-related.

Alcohol-related fatalities	1,096
Alcohol-related injuries	17,379
Alcohol-related crashes	22,752
Alcohol-related fatal crashes	997
Alcohol-related injury crashes	10,937

CRASH ENVIRONMENTS

59.6% of all crashes occurred in primarily business areas, while 60.3% of fatal crashes were in open country or residential areas.

Crashes in Business Areas	145,082
Crashes in Residential Areas	70,707
Crashes in Open Country	27,505
Fatal Crashes in Business Areas	1,144
Fatal Crashes in Residential Areas	789
Fatal Crashes in Open Country	947

State of Florida Summary

2003 Florida Traffic Crash Statistics

PEDESTRIAN CRASHES

16% of all traffic fatalities were pedestrians.

Pedestrians killed	509
Pedestrians injured	7,449
Pedestrian crashes	7,980

BICYCLE CRASHES

3% of all traffic fatalities were bicycle drivers.

Bicyclists killed	95
Bicyclists injured	4,991
Bicycle crashes	5,393

MOTORCYCLE CRASHES

10.7% of all traffic fatalities were motorcycle drivers.

Motorcyclists killed	339
Motorcyclists injured	5,973
Motorcycle crashes	6,635

Safety Equipment Use in Crashes

2003 Florida Traffic Crash Statistics

TABLE 1 Comparative Safety Equipment Use By Drivers

	No Injury	%	Possible Injury	%	Non-Incapacitating Injury	%	Incapacitating Injury	%	Fatal	%	Injury Not Stated	%	Total
Safety Belt	123,132	58.42	36,980	49.36	18,201	41.68	5,938	35.70	237	15.83	5	1.74	184,493
Belt & Bag (Deployed)	14,296	6.78	10,632	14.19	9,996	22.89	3,876	23.30	228	15.23	1	0.35	39,029
Belt & Bag (Not Deployed)	58,864	27.93	21,262	28.38	9,181	21.02	3,170	19.06	122	8.15	5	1.74	92,604
Air Bag Only (Deployed)	771	0.37	849	1.13	1,183	2.71	822	4.94	273	18.24	0	0.00	3,898
Air Bag Only (Not Deployed)	1,094	0.52	523	0.70	516	1.18	342	2.06	79	5.28	0	0.00	2,554
Not Using Safety Equipment	12,389	5.88	4,581	6.11	4,477	10.25	2,442	14.68	551	36.81	4	1.39	24,444
Use Not Stated	224	0.11	91	0.12	119	0.27	42	0.25	7	0.47	273	94.79	756
TOTAL	210,770	100	74,918	100	43,673	100	16,632	100	1,497	100	288	100	347,778

Comparative Safety Equipment Use By Vehicle Passengers

	No Injury	%	Possible Injury	%	Non-Incapacitating Injury	%	Incapacitating Injury	%	Fatal	%	Injury Not Stated	%	Total
Safety Belt	65,607	62.46	22,472	60.15	9,729	50.45	3,053	41.39	145	21.35	0	0.00	101,006
Belt & Bag (Deployed)	3,192	3.04	2,670	7.15	2,360	12.24	901	12.22	81	11.93	0	0.00	9,204
Belt & Bag (Not Deployed)	15,929	15.16	6,556	17.55	2,837	14.71	960	13.02	43	6.33	0	0.00	26,325
Air Bag Only (Deployed)	228	0.22	254	0.68	338	1.75	198	2.68	53	7.81	0	0.00	1,071
Air Bag Only (Not Deployed)	414	0.39	297	0.80	232	1.20	138	1.87	24	3.53	0	0.00	1,105
Not Using Safety Equipment	19,643	18.70	5,098	13.65	3,781	19.61	2,122	28.77	332	48.90	0	0.00	30,976
Use Not Stated	26	0.02	10	0.03	7	0.04	4	0.05	1	0.15	0	0.00	48
TOTAL	105,039	100	37,357	100	19,284	100	7,376	100	679	100	0	0	169,735

TABLE 1A Comparative Safety Equipment Use By Drivers and Vehicle Passengers

VEHICLE OCCUPANTS	No Injury	%	Possible Injury	%	Non-Incapacitating Injury	%	Incapacitating Injury	%	Fatal	%	Injury Not Stated	%	Total
Safety Belt	188,739	59.76	59,452	52.95	27,930	44.36	8,991	37.45	382	17.56	5	1.74	285,499
Belt & Bag (Deployed)	17,488	5.54	13,302	11.85	12,356	19.63	4,777	19.90	309	14.20	1	0.35	48,233
Belt & Bag (Not Deployed)	74,793	23.68	27,818	24.78	12,018	19.09	4,130	17.20	165	7.58	5	1.74	118,929
Air Bag Only (Deployed)	999	0.32	1,103	0.98	1,521	2.42	1,020	4.25	326	14.98	0	0.00	4,969
Air Bag Only (Not Deployed)	1,508	0.48	820	0.73	748	1.19	480	2.00	103	4.73	0	0.00	3,659
Not Using Safety Equipment	32,032	10.14	9,679	8.62	8,258	13.12	4,564	19.01	883	40.58	4	1.39	55,420
Use Not Stated	250	0.08	101	0.09	126	0.20	46	0.19	8	0.37	273	94.79	804
TOTAL	315,809	100	112,275	100	62,957	100	24,008	100	2,176	100	288	100	517,513

NOTE: In 2003, Florida experienced 2,176 traffic deaths of drivers and passengers in seat belt equipped vehicles (SBEV). The tragic note of this, is 60.3% (1,312) of these people killed were not wearing seat belts.

Safety Equipment Use in Crashes

2003 Florida Traffic Crash Statistics

TABLE 1B Comparative Safety Equipment Use By Motorcyclists and Their Passengers

	No Injury	%	Possible Injury	%	Non-Incapacitating Injury	%	Incapacitating Injury	%	Fatal	%	Injury Not Stated	%	Total
With Safety Helmet													
Driver	236	35.98	547	45.58	1,564	47.47	996	44.95	163	44.66	0	0.00	3,506
Passenger	42	6.40	60	5.00	160	4.86	111	5.01	11	3.01	0	0.00	384
SUBTOTAL	278	42.38	607	50.58	1,724	52.32	1,107	49.95	174	47.67	0	0.00	3,890
Without Safety Helmet													
Driver	285	43.45	498	41.50	1,386	42.06	981	44.27	176	48.22	0	0.00	3,326
Passenger	93	14.18	92	7.67	184	5.58	128	5.78	15	4.11	0	0.00	512
SUBTOTAL	378	57.62	590	49.17	1,570	47.65	1,109	50.05	191	52.33	0	0.00	3,838
Use Not Stated													
Driver	0	0.00	3	0.25	1	0.03	0	0.00	0	0.00	0	0.00	4
Passenger	0	0.00	0	0.00	0	0.00	0	0.00	0	0.00	0	0.00	0
SUBTOTAL	0	0.00	3	0.25	1	0.03	0	0.00	0	0.00	0	0.00	4
TOTAL	656	100	1,200	100	3,295	100	2,216	100	365	100	0	0	7,732

TABLE 1C Comparative Safety Equipment Use By Bicyclists and Their Passengers

	No Injury	%	Possible Injury	%	Non-Incapacitating Injury	%	Incapacitating Injury	%	Fatal	%	Injury Not Stated	%	Total
With Safety Helmet													
Driver	39	8.82	192	11.67	333	13.35	110	11.84	6	6.32	0	0.00	680
Passenger	3	0.68	1	0.06	3	0.12	6	0.65	0	0.00	0	0.00	13
SUBTOTAL	42	9.50	193	11.73	336	13.47	116	12.49	6	6.32	0	0.00	693
Without Safety Helmet													
Driver	344	77.83	1,410	85.71	2,124	85.13	802	86.33	88	92.63	0	0.00	4,768
Passenger	56	12.67	30	1.82	29	1.16	9	0.97	0	0.00	0	0.00	124
SUBTOTAL	400	90.50	1,440	87.54	2,153	86.29	811	87.30	88	92.63	0	0.00	4,892
Use Not Stated													
Driver	0	0.00	12	0.73	6	0.24	2	0.22	1	1.05	0	0.00	21
Passenger	0	0.00	0	0.00	0	0.00	0	0.00	0	0.00	0	0.00	0
SUBTOTAL	0	0.00	12	0.73	6	0.24	2	0.22	1	1.05	0	0.00	21
TOTAL	442	100	1,645	100	2,495	100	929	100	95	100	0	0	5,606

NOTE: Injuries reported for motorcyclists and bicyclists include head and other bodily injuries.

Safety Equipment Use and Child Passengers*

2003 Florida Traffic Crash Statistics

**Child Restraint Device and Safety Belt Use
By Passenger Age Groups**

TABLE 2

Age Group	No Injury	%	Injury	%	Fatal	%	Injury Not Stated	%
0 to 3								
With Restraint	8,221	91.60	2,726	86.84	14	66.67	0	0.00
Without Restraint	754	8.40	413	13.16	7	33.33	0	0.00
Use Not Stated	0	0.00	0	0.00	0	0.00	0	0.00
Total	8,975	100	3,139	100	21	100	0	0
4 to 5								
With Restraint	3,530	89.05	1,353	85.04	2	33.33	0	0.00
Without Restraint	434	10.95	237	14.90	4	66.67	0	0.00
Use Not Stated	0	0.00	1	0.06	0	0.00	0	0.00
Total	3,964	100	1,591	100	6	100	0	0
6 to 17								
With Restraint	23,075	73.91	11,600	76.31	29	29.90	0	0.00
Without Restraint	8,147	26.09	3,602	23.69	68	70.10	0	0.00
Use Not Stated	0	0.00	0	0.00	0	0.00	0	0.00
Total	31,222	100	15,202	100	97	100	0	0

NOTE: Seventy percent (72 of 103) of the children ages 4 to 17 years old killed were not using safety equipment.

**Child Passengers Injured or Killed
1994 Through 2003**

TABLE 3

Year	Age Group By Injury Level												Total
	Injury						Fatal						
	0 to 3	%	4 to 5	%	6 to 17	%	0 to 3	%	4 to 5	%	6 to 17	%	
1994	2,735	9.96	2,173	10.80	18,139	10.03	21	12.28	16	16.16	118	10.85	20,911
1995	2,652	9.66	2,238	11.13	18,785	10.39	13	7.60	14	14.14	108	9.93	21,464
1996	2,730	9.94	2,300	11.43	19,216	10.63	19	11.11	9	9.09	109	10.02	21,974
1997	2,740	9.98	2,215	11.01	19,610	10.84	12	7.02	9	9.09	104	9.56	22,371
1998	2,572	9.37	2,186	10.87	19,791	10.94	19	11.11	12	12.12	97	8.92	22,394
1999	2,554	9.30	2,003	9.96	19,565	10.82	15	8.77	9	9.09	120	11.03	22,143
2000	2,642	9.62	1,939	9.64	17,684	9.78	15	8.77	8	8.08	121	11.12	20,349
2001	2,731	9.95	1,925	9.57	18,035	9.97	12	7.02	7	7.07	109	10.02	20,785
2002	2,957	10.77	1,545	7.68	14,811	8.19	24	14.04	9	9.09	105	9.65	17,801
2003	3,139	11.43	1,591	7.91	15,202	8.41	21	12.28	6	6.06	97	8.92	18,368
Total	27,452	100	20,115	100	180,838	100	171	100	99	100	1,088	100	208,560

* Does not include passengers of bicycles, motorcycles, or all-terrain vehicles on both tables.

Age of Drivers in Crashes*

2003 Florida Traffic Crash Statistics

TABLE 4 Crash Rates for Florida Resident Drivers in All Crashes By Age Groups

Age Groups	Driver Licenses Issued	Drivers in All Crashes	Rate Per 10,000 Licensed Drivers	Drivers in Fatal Crashes	Rate Per 10,000 Licensed Drivers
Under 15	0	478		13	
15-19	751,927	36,810	489.54	406	5.40
20-24	1,203,042	45,972	382.13	517	4.30
25-29	1,296,857	35,629	274.73	396	3.05
30-34	1,408,112	35,560	252.54	364	2.59
35-39	1,434,139	34,436	240.12	366	2.55
40-44	1,519,052	33,917	223.28	410	2.70
45-49	1,379,322	28,376	205.72	324	2.35
50-54	1,193,728	22,291	186.73	258	2.16
55-59	1,065,352	17,452	163.81	261	2.45
60-64	884,034	12,368	139.90	145	1.64
65-69	738,655	9,037	122.34	126	1.71
70-74	655,058	7,521	114.81	126	1.92
75-79	576,325	6,403	111.10	111	1.93
80-84	405,131	4,257	105.08	86	2.12
85+	277,951	2,519	90.63	78	2.81
Unknown	0	4,310		26	
TOTAL	14,788,685	337,336		4,013	

NOTE: Drivers 15 to 19 years of age share the highest rate per 10,000 licensed drivers of crash involvement (489.54) and the highest rate in fatal crashes (5.4). Drivers 20 to 24 hold second place in both categories.

TABLE 5 Crash Rates for Florida Resident Drinking Drivers in All Crashes By Age Groups

Age Groups	Driver Licenses Issued	Drinking Drivers in All Crashes	Rate Per 10,000 Licensed Drivers	Drinking Drivers in Fatal Crashes	Rate Per 10,000 Licensed Drivers
Under 15	0	8		1	
15-19	751,927	1,075	14.30	49	0.65
20-24	1,203,042	2,916	24.24	140	1.16
25-29	1,296,857	2,043	15.75	108	0.83
30-34	1,408,112	1,808	12.84	94	0.67
35-39	1,434,139	1,836	12.80	81	0.56
40-44	1,519,052	1,978	13.02	89	0.59
45-49	1,379,322	1,573	11.40	78	0.57
50-54	1,193,728	1,078	9.03	40	0.34
55-59	1,065,352	641	6.02	26	0.24
60-64	884,034	358	4.05	14	0.16
65-69	738,655	210	2.84	17	0.23
70-74	655,058	119	1.82	4	0.06
75-79	576,325	90	1.56	5	0.09
80-84	405,131	39	0.96	4	0.10
85+	277,951	14	0.50	0	0.00
Unknown	0	191		2	
TOTAL	14,788,685	15,977		752	

NOTE: Drivers 20 to 24 years of age that have been drinking had the highest rate per 10,000 licensed drivers of crash involvement (24.24) and the highest rate in fatal crashes (1.16).

* Does not include drivers of bicycles, mopeds, ATVs, or trains in "all crashes" and in "fatal crashes" categories on both tables.

Selected Age Group*

2003 Florida Traffic Crash Statistics

TABLE 6
Crash Rates for Florida Resident Drivers
In All Crashes for a Selected Age Group (15 - 29)

Age of Driver	Driver Licenses Issued	Drivers in All Crashes	Rate Per 10,000 Licensed Drivers	Drivers in Fatal Crashes	Rate Per 10,000 Licensed Drivers
Under 15	0	478		13	
15	75,184	657	87.39	11	1.46
16	131,342	5,493	418.22	63	4.80
17	157,556	8,686	551.30	83	5.27
18	185,188	11,218	605.76	126	6.80
19	202,657	10,756	530.75	123	6.07
20	217,868	10,234	469.73	120	5.51
21	235,265	9,892	420.46	122	5.19
22	245,763	9,144	372.07	95	3.87
23	250,780	8,733	348.23	95	3.79
24	253,366	7,969	314.53	85	3.35
25	256,466	7,655	298.48	99	3.86
26	263,343	7,343	278.84	80	3.04
27	256,875	7,063	274.96	84	3.27
28	258,964	6,880	265.67	68	2.63
29	261,209	6,688	256.04	65	2.49

NOTE: Drivers 18 years of age have the highest rate of crash involvement in all type crashes (605.76) and, also, fatal crashes (6.8).

TABLE 6A
Crash Rates for Florida Resident Drivers
In All Crashes for a Selected Age Group (70 - 85+)

Age of Driver	Driver Licenses Issued	Drivers in All Crashes	Rate Per 10,000 Licensed Drivers	Drivers in Fatal Crashes	Rate Per 10,000 Licensed Drivers
70	130,977	1,574	120.17	26	1.99
71	134,378	1,506	112.07	23	1.71
72	130,642	1,530	117.11	28	2.14
73	132,803	1,465	110.31	25	1.88
74	126,258	1,446	114.53	24	1.90
75	125,550	1,365	108.72	29	2.31
76	122,069	1,307	107.07	17	1.39
77	114,356	1,288	112.63	28	2.45
78	109,402	1,316	120.29	19	1.74
79	104,948	1,127	107.39	18	1.72
80	96,433	1,043	108.16	19	1.97
81	88,560	964	108.85	26	2.94
82	84,755	868	102.41	13	1.53
83	73,431	731	99.55	18	2.45
84	61,952	651	105.08	10	1.61
85+	277,951	2,519	90.63	78	2.81

NOTE: Drivers 78 years of age have the highest rate of crash involvement in all type crashes (120.29) but 81 year old drivers had the highest rate of involvement in fatal crashes (2.94).

* Does not include drivers of bicycles, mopeds, ATVs, or trains in "all crashes" and in "fatal crashes" categories on both tables.

Selected Age Group*

2003 Florida Traffic Crash Statistics

TABLE 7
Crash Rates for Florida Resident Drinking Drivers
In All Crashes for a Selected Age Group (15 - 29)

Age of Driver	Driver Licenses Issued	Drinking Drivers in All Crashes	Rate Per 10,000 Licensed Drivers	Drinking Drivers in Fatal Crashes	Rate Per 10,000 Licensed Drivers
Under 15	0	8		1	
15	75,184	14	1.86	1	0.13
16	131,342	73	5.56	5	0.38
17	157,556	166	10.54	8	0.51
18	185,188	367	19.82	19	1.03
19	202,657	455	22.45	16	0.79
20	217,868	476	21.85	21	0.96
21	235,265	701	29.80	37	1.57
22	245,763	609	24.78	31	1.26
23	250,780	585	23.33	27	1.08
24	253,366	545	21.51	24	0.95
25	256,466	465	18.13	27	1.05
26	263,343	403	15.30	22	0.84
27	256,875	411	16.00	25	0.97
28	258,964	338	13.05	17	0.66
29	261,209	426	16.31	17	0.65

NOTE: 21 year old drinking drivers had the highest involvement in all crashes (29.8) and, also, in fatal crashes (1.57).

TABLE 7A
Crash Rates for Florida Resident Drinking Drivers
In All Crashes for a Selected Age Group (70 - 85+)

Age of Driver	Driver Licenses Issued	Drinking Drivers in All Crashes	Rate Per 10,000 Licensed Drivers	Drinking Drivers in Fatal Crashes	Rate Per 10,000 Licensed Drivers
70	130,977	27	2.06	1	0.08
71	134,378	27	2.01	1	0.07
72	130,642	18	1.38	0	0.00
73	132,803	20	1.51	0	0.00
74	126,258	27	2.14	2	0.16
75	125,550	24	1.91	1	0.08
76	122,069	20	1.64	0	0.00
77	114,356	18	1.57	2	0.17
78	109,402	11	1.01	1	0.09
79	104,948	17	1.62	1	0.10
80	96,433	14	1.45	1	0.10
81	88,560	9	1.02	1	0.11
82	84,755	7	0.83	0	0.00
83	73,431	3	0.41	0	0.00
84	61,952	6	0.97	2	0.32
85+	277,951	14	0.50	0	0.00

NOTE: 74 year old drinking drivers had the highest involvement in all crashes (2.14) and the 84 year old drinking drivers had the highest involvement rate in fatal crashes (.32).

* Does not include drivers of bicycles, mopeds, ATVs, or trains in "all crashes" and in "fatal crashes" categories on both tables.

TABLE 8 Drivers Killed or Injured By Residence and Gender

Residence	Male				Female				Unknown Gender			
	Killed	% Killed	Injured	% Injured	Killed	% Killed	Injured	% Injured	Killed	% Killed	Injured	% Injured
County of Crash	1,098	73.84	62,051	79.38	351	75.65	58,172	83.87	0	0.00	22	10.78
Elsewhere in State	300	20.17	12,040	15.40	90	19.40	8,991	12.96	0	0.00	1	0.49
Non-Resident of State	65	4.37	3,302	4.22	20	4.31	1,867	2.69	0	0.00	1	0.49
Foreign	9	0.61	336	0.43	2	0.43	181	0.26	0	0.00	0	0.00
Unknown	15	1.01	444	0.57	1	0.22	148	0.21	1	100.00	180	88.24
Total	1,487	100	78,173	100	464	100	69,359	100	1	100	204	100

TABLE 8A Drivers Killed or Injured By Residence

Residence	Killed	% Killed	Injured	% Injured	All Drivers
County of Crash	1,449	74.23	120,245	81.39	290,821
Elsewhere in State	390	19.98	21,032	14.24	53,026
Non-Resident of State	85	4.35	5,170	3.50	14,840
Foreign	11	0.56	517	0.35	1,764
Unknown	17	0.87	772	0.52	1,573
Total	1,952	100	147,736	100	362,024

TABLE 9 Drivers Involved in Crashes by Age Groups

Age	All	% All	Killed	% Killed	Injured	% Injured
Under 15	1,179	0.33	14	0.72	888	0.60
15	882	0.24	8	0.41	453	0.31
16	5,772	1.59	26	1.33	2,222	1.50
17	8,987	2.48	35	1.79	3,676	2.49
18	11,699	3.23	58	2.97	4,716	3.19
19	11,309	3.12	56	2.87	4,636	3.14
20	10,819	2.99	67	3.43	4,451	3.01
21 - 24	37,832	10.45	194	9.94	15,632	10.58
25 - 34	75,412	20.83	342	17.52	30,032	20.33
35 - 44	72,779	20.10	347	17.78	28,712	19.43
45 - 54	54,373	15.02	282	14.45	22,082	14.95
55 - 64	32,331	8.93	191	9.78	13,351	9.04
65 - 74	18,243	5.04	135	6.92	7,566	5.12
75 - 84	11,479	3.17	114	5.84	5,035	3.41
85+	2,660	0.73	56	2.87	1,198	0.81
Unknown	6,268	1.73	27	1.38	3,086	2.09
Total	362,024	100	1,952	100	147,736	100

* Includes bicycle drivers on all three tables.

Persons in Crashes by Age and Gender

2003 Florida Traffic Crash Statistics

TABLE 10

Persons Killed

Age Groups	Total Killed	Drivers				Passengers				Pedestrians				Bicyclists				Motorcyclists			
		Total	Male	Female	Unk	Total	Male	Female	Unk	Total	Male	Female	Unk	Total	Male	Female	Unk	Total	Male	Female	Unk
0 - 4	35	0	0	0	0	25	9	16	0	10	7	3	0	0	0	0	0	0	0	0	0
5 - 9	30	0	0	0	0	22	11	11	0	8	3	5	0	0	0	0	0	0	0	0	0
10 - 14	52	10	9	1	0	29	15	14	0	9	6	3	0	3	3	0	0	1	1	0	0
15	33	5	4	1	0	20	7	13	0	5	4	1	0	3	2	1	0	0	0	0	0
16	47	22	14	8	0	15	9	6	0	6	2	4	0	0	0	0	0	4	4	0	0
17	52	30	23	7	0	17	10	7	0	0	0	0	0	2	2	0	0	3	3	0	0
18	89	53	32	21	0	28	20	8	0	3	3	0	0	1	1	0	0	4	4	0	0
19	82	42	27	15	0	18	12	6	0	8	6	2	0	0	0	0	0	14	14	0	0
20	93	47	36	11	0	19	10	9	0	7	6	1	0	2	1	1	0	18	18	0	0
21 - 24	282	155	114	41	0	67	45	22	0	21	17	4	0	5	5	0	0	34	33	1	0
25 - 34	496	249	181	68	0	101	60	41	0	53	39	14	0	9	8	1	0	84	81	3	0
35 - 44	513	238	174	64	0	72	37	35	0	94	75	19	0	24	21	3	0	85	85	0	0
45 - 54	436	207	149	58	0	64	28	36	0	90	70	20	0	19	18	1	0	56	53	3	0
55 - 64	298	152	106	46	0	46	15	31	0	61	46	15	0	13	12	1	0	26	26	0	0
65 - 74	226	124	83	41	0	49	16	33	0	42	31	11	0	5	5	0	0	6	6	0	0
75 - 84	221	111	71	40	0	55	20	35	0	52	29	23	0	2	2	0	0	1	1	0	0
85+	111	55	35	20	0	36	12	24	0	19	8	11	0	0	0	0	0	1	1	0	0
Unknown	83	18	12	5	1	35	16	19	0	21	19	2	0	7	5	2	0	2	2	0	0
Total	3,179	1,518	1,070	447	1	718	352	366	0	509	371	138	0	95	85	10	0	339	332	7	0

Persons in Crashes by Age and Gender

2003 Florida Traffic Crash Statistics

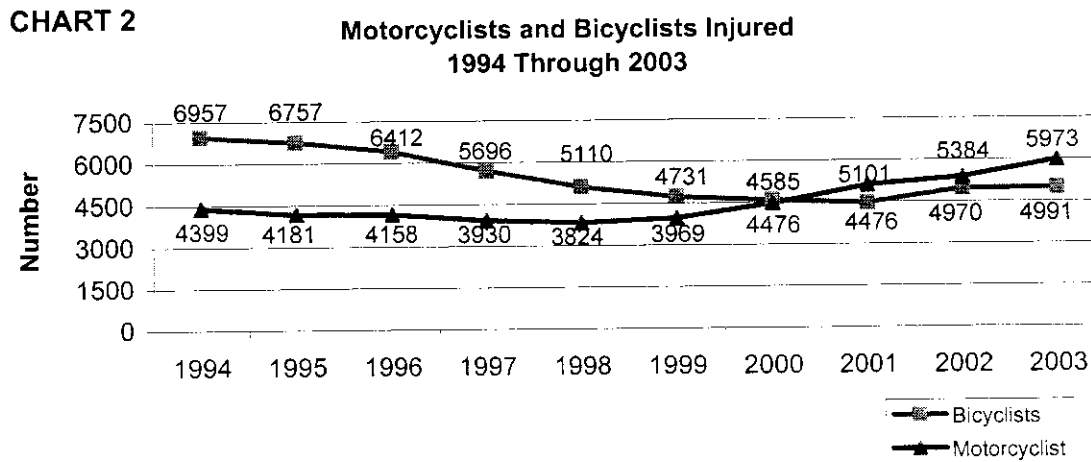
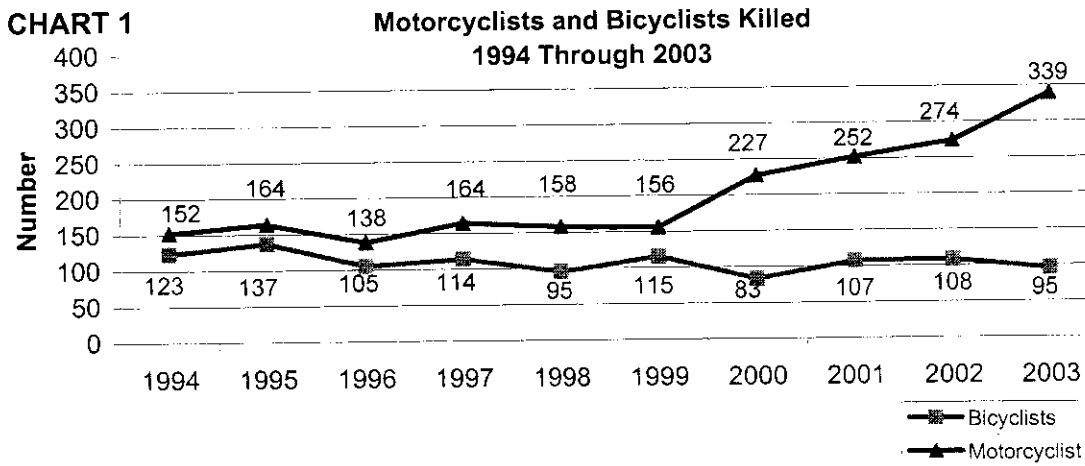
TABLE 11

Persons Injured

Age Groups	Total Injured	Drivers				Passengers				Pedestrians				Bicyclists			Motorcyclists				
		Total	Male	Female	Unk	Total	Male	Female	Unk	Total	Male	Female	Unk	Total	Male	Female	Unk				
0 - 4	4,165	1	1	0	0	3,927	1,952	1,975	0	235	152	83	0	2	0	2	0	0	0	0	
5 - 9	4,924	4	2	2	0	4,455	2,142	2,313	0	463	304	159	0	2	0	2	0	0	0	0	
10 - 14	7,293	311	202	109	0	5,744	2,509	3,235	0	670	399	271	0	520	419	101	0	48	42	6	
15	2,310	282	153	129	0	1,658	664	994	0	199	103	96	0	144	115	29	0	27	25	2	
16	4,545	2,046	921	1,123	2	2,154	861	1,293	0	169	92	77	0	145	120	25	0	31	29	2	
17	6,093	3,517	1,713	1,803	1	2,255	953	1,302	0	162	81	81	0	107	86	21	0	52	49	3	
18	7,103	4,492	2,248	2,243	1	2,230	974	1,256	0	157	87	70	0	101	83	18	0	123	110	13	
19	6,730	4,384	2,099	2,285	0	1,967	860	1,107	0	127	69	58	0	94	69	25	0	158	149	9	
20	6,306	4,151	2,014	2,137	0	1,723	787	936	0	132	85	47	0	103	78	25	0	197	192	5	
21 - 24	21,520	14,576	7,175	7,398	3	5,442	2,554	2,888	0	446	276	170	0	299	215	84	0	757	721	36	
25 - 34	38,660	28,026	13,897	14,128	1	7,706	3,307	4,399	0	922	596	325	1	597	461	136	0	1,409	1,310	97	
35 - 44	36,145	26,613	13,265	13,345	3	6,312	2,394	3,918	0	1,121	703	418	0	836	668	168	0	1,263	1,125	138	
45 - 54	27,970	20,241	10,080	10,160	1	4,970	1,578	3,392	0	918	561	357	0	713	590	123	0	1,128	1,015	113	
55 - 64	17,463	12,540	6,460	6,080	0	3,520	914	2,606	0	592	344	248	0	301	243	58	0	510	485	25	
65 - 74	10,670	7,272	3,970	3,302	0	2,660	597	2,063	0	444	233	211	0	171	145	26	0	123	121	2	
75 - 84	7,227	4,898	2,654	2,244	0	1,845	472	1,373	0	347	153	194	0	105	79	26	0	32	30	2	
85+	1,914	1,180	686	493	1	590	192	398	0	126	58	68	0	11	10	1	0	7	7	0	
Unknown	10,601	2,238	1,206	846	186	7,296	2,881	4,415	0	219	148	71	0	740	537	202	1	108	99	7	
Total	221,639	136,772	68,746	67,827	199	66,454	26,591	39,863	0	7,449	4,444	3,004	1	4,991	3,918	1,072	1	5,973	5,509	460	4

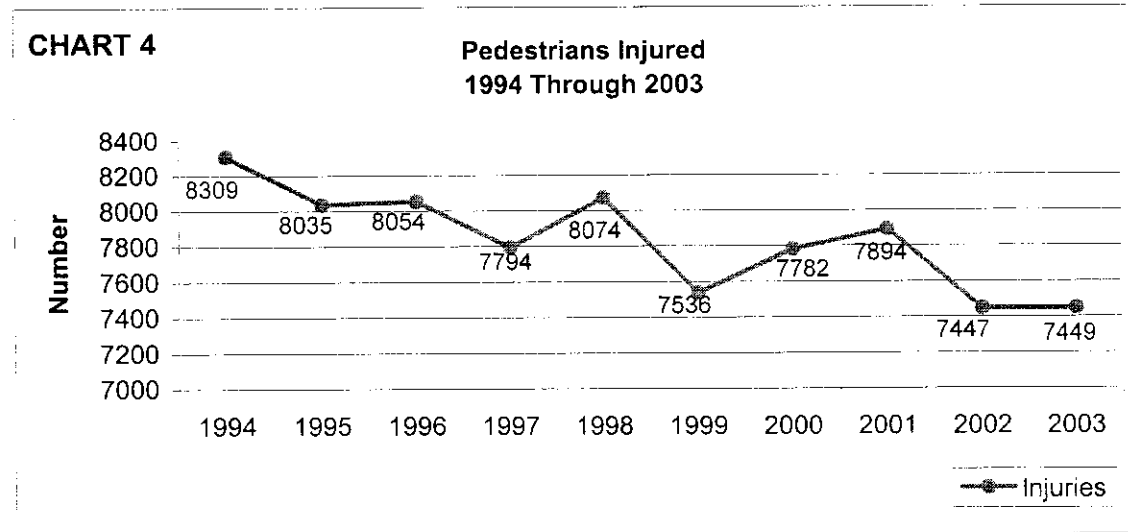
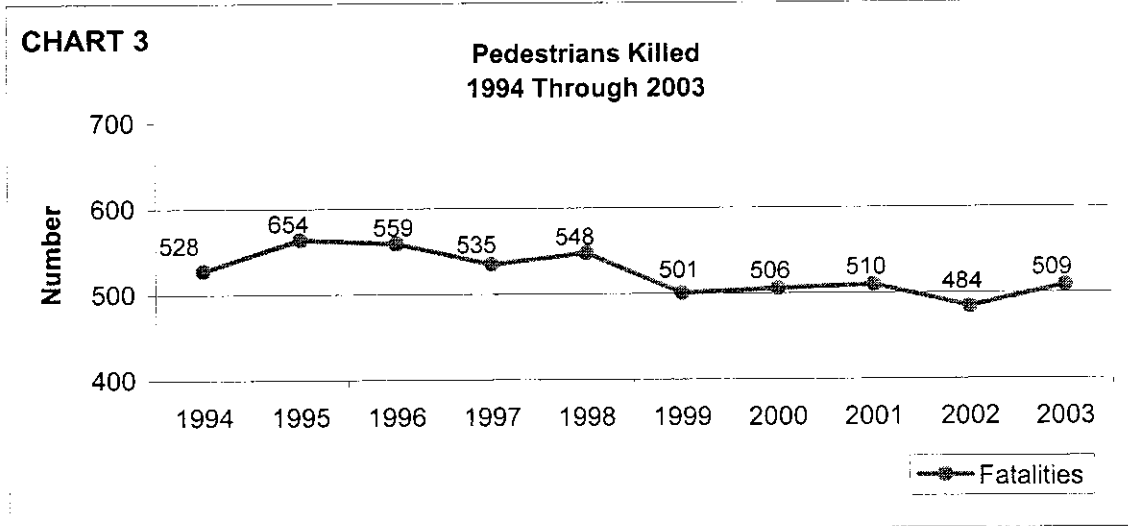
Motorcyclists and Bicyclists Crash Trends

2003 Florida Traffic Crash Statistics



Pedestrian Crash Trend

2003 Florida Traffic Crash Statistics

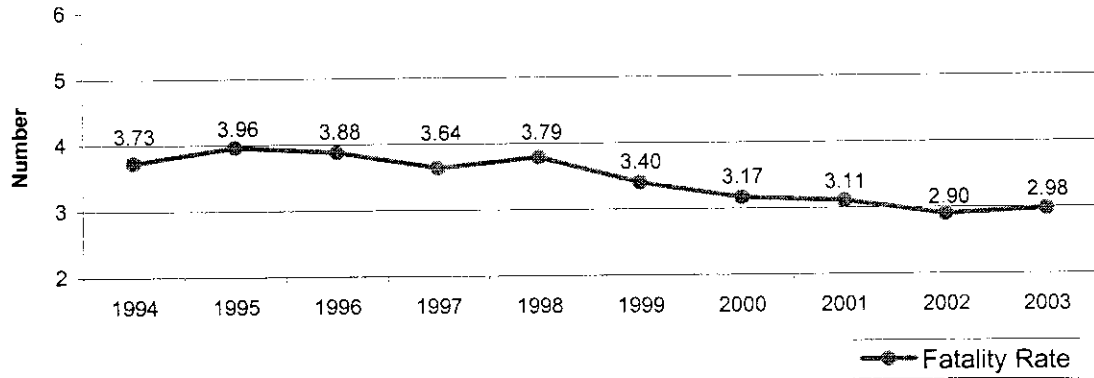


Pedestrian Crash Trend

2003 Florida Traffic Crash Statistics

CHART 5

**Pedestrian Fatality Rate
1994 Through 2003**



Pedestrian Behavior

2003 Florida Traffic Crash Statistics

TABLE 12 Pedestrians Killed in Crashes By Age and Type of Actions

Age Group	Pedestrian Actions														Total Killed
	Cross Not at Inter-section	%	Cross at Inter-section	%	Walk Along Rd. With Traffic	%	Walk Along Rd. Against Traffic	%	Standing or Playing in Road	%	Other	%	Unk	%	
0 - 4	4	1.76	0	0.00	0	0.00	0	0.00	2	7.14	4	3.05	0	0.00	10
5 - 9	1	0.44	3	4.84	0	0.00	1	33.33	0	0.00	3	2.29	0	0.00	8
10 - 14	5	2.20	4	6.45	0	0.00	0	0.00	0	0.00	0	0.00	0	0.00	9
15 - 19	10	4.41	1	1.61	3	9.09	0	0.00	2	7.14	5	3.82	1	4.00	22
20 - 24	8	3.52	0	0.00	3	9.09	1	33.33	4	14.29	9	6.87	3	12.00	28
25 - 34	20	8.81	4	6.45	6	18.18	1	33.33	5	17.86	14	10.69	3	12.00	53
35 - 44	41	18.06	5	8.06	7	21.21	0	0.00	5	17.86	29	22.14	7	28.00	94
45 - 54	48	21.15	6	9.68	7	21.21	0	0.00	7	25.00	19	14.50	3	12.00	90
55 - 64	27	11.89	11	17.74	4	12.12	0	0.00	1	3.57	15	11.45	3	12.00	61
65 - 74	20	8.81	7	11.29	1	3.03	0	0.00	2	7.14	10	7.63	1	4.00	41
75 - 84	23	10.13	12	19.35	1	3.03	0	0.00	0	0.00	15	11.45	3	12.00	54
85+	7	3.08	6	9.68	0	0.00	0	0.00	0	0.00	5	3.82	1	4.00	19
Unknown	13	5.73	3	4.84	1	3.03	0	0.00	0	0.00	3	2.29	0	0.00	20
Total	227	100	62	100	33	100	3	100	28	100	131	100	25	100	509

TABLE 13 Pedestrians Injured in Crashes By Age and Type of Actions

Age Group	Pedestrian Actions														Total Injured
	Cross Not at Inter-section	%	Cross at Inter-section	%	Walk Along Rd. With Traffic	%	Walk Along Rd. Against Traffic	%	Standing or Playing in Road	%	Other	%	Unk	%	
0 - 4	73	3.89	18	1.62	3	0.71	1	0.58	30	6.48	105	3.29	5	2.34	235
5 - 9	188	10.02	44	3.96	4	0.95	5	2.92	64	13.82	145	4.55	13	6.07	463
10 - 14	200	10.66	134	12.05	45	10.64	19	11.11	61	13.17	194	6.08	17	7.94	670
15 - 19	177	9.43	137	12.32	75	17.73	25	14.62	45	9.72	336	10.54	19	8.88	814
20 - 24	149	7.94	73	6.56	46	10.87	21	12.28	30	6.48	241	7.56	18	8.41	578
25 - 34	205	10.92	106	9.53	61	14.42	19	11.11	53	11.45	451	14.14	27	12.62	922
35 - 44	289	15.40	143	12.86	67	15.84	23	13.45	62	13.39	498	15.62	39	18.22	1,121
45 - 54	227	12.09	122	10.97	55	13.00	21	12.28	61	13.17	406	12.73	26	12.15	918
55 - 64	109	5.81	123	11.06	24	5.67	16	9.36	26	5.62	279	8.75	15	7.01	592
65 - 74	111	5.91	95	8.54	16	3.78	8	4.68	11	2.38	197	6.18	6	2.80	444
75 - 84	73	3.89	71	6.38	10	2.36	7	4.09	12	2.59	163	5.11	11	5.14	347
85+	24	1.28	17	1.53	6	1.42	5	2.92	0	0.00	71	2.23	3	1.40	126
Unknown	52	2.77	29	2.61	11	2.60	1	0.58	8	1.73	103	3.23	15	7.01	219
Total	1,877	100	1,112	100	423	100	171	100	463	100	3,189	100	214	100	7,449

NOTE: "Crossing Not at Intersection" is the deadliest and causes the most injuries of all pedestrian actions. 44.6% (227) of all pedestrian fatalities (509). 25.2% (1,877) of all pedestrian injuries (7,449).

TABLE 14 Pedestrians in Crashes By Age
and Percent Drinking

Age Group	Number Pedestrians	Number Drinking	Percent Drinking
0 - 4	268	0	0.00
5 - 9	486	3	0.62
10 - 14	719	2	0.28
15 - 19	888	35	3.94
20 - 24	659	100	15.17
25 - 29	519	83	15.99
30 - 34	519	97	18.69
35 - 39	555	103	18.56
40 - 44	733	146	19.92
45 - 49	601	119	19.80
50 - 54	460	96	20.87
55 - 59	384	44	11.46
60 - 64	301	27	8.97
65 - 69	266	18	6.77
70 - 74	234	4	1.71
75 - 79	243	3	1.23
80 - 84	165	4	2.42
85+	147	3	2.04
Unknown	290	32	11.03
Total	8,437	919	10.89

TABLE 15 Pedestrians in Crashes By Injury
Severity and Percent Drinking

Injury Severity	Number Pedestrians	Number Drinking	Percent Drinking
No Injury	444	40	9.01
Possible Injury	2,399	140	5.84
Non-Incapacitating Injury	3,148	262	8.32
Incapacitating Injury	1,902	291	15.30
Fatal Injury	509	182	35.76
Non-Traffic Fatality	8	4	50.00
Unknown	27	0	0.00
Total	8,437	919	10.89

NOTE: Drinking is a major problem with pedestrians in traffic crashes. 10.89% (919) of all pedestrians in all crashes (8,437) had been drinking and 35.76% (182) of all pedestrian fatalities (509) had been drinking.

Truck Passengers

2003 Florida Traffic Crash Statistics

TABLE 16 Passengers Riding in Beds of Trucks by Age and Truck Types

Age Groups	Light (Pickup) Trucks				All Types of Trucks			
	Killed	%	Injured	%	Killed	%	Injured	%
0-4	0	0.00	9	3.38	0	0.00	10	3.31
5-9	0	0.00	13	4.89	0	0.00	14	4.64
10-14	0	0.00	33	12.41	0	0.00	35	11.59
15-19	3	30.00	88	33.08	3	30.00	90	29.80
20-24	1	10.00	31	11.65	1	10.00	34	11.26
25-34	2	20.00	29	10.90	2	20.00	41	13.58
35-44	2	20.00	21	7.89	2	20.00	26	8.61
45-54	1	10.00	14	5.26	1	10.00	17	5.63
55-64	0	0.00	6	2.26	0	0.00	11	3.64
65-74	0	0.00	1	0.38	0	0.00	2	0.66
75-84	0	0.00	0	0.00	0	0.00	0	0.00
85+	0	0.00	0	0.00	0	0.00	0	0.00
Unknown	1	10.00	21	7.89	1	10.00	22	7.28
TOTAL	10	100	266	100	10	100	302	100

Florida Motoring Environment

2003 Florida Traffic Crash Statistics

TABLE 17

Year	Licensed Drivers	Registered Vehicles ++	Vehicle Miles*	Crashes	Non-Fatal Injuries	Deaths	Mileage Death Rate**
1984	9,442,763	9,444,964	85,241	237,511	202,889	2,856	3.4
1985	9,630,975	10,827,693	88,057	250,412	216,596	2,870	3.3
1986	9,924,110	11,651,253	87,325	242,381	219,352	2,874	3.3
1987	10,241,063	11,738,273	92,865	240,429	215,886	2,891	3.1
1988	10,648,019	11,997,948	105,030	256,543	230,738	3,152	3
1989	11,109,288	12,276,272	108,876	252,439	230,060	3,033	2.8
1990	11,612,402	12,465,790	109,997	216,245	214,208	2,951	2.7
1991	12,170,821	11,184,146+	113,484	195,312	195,122	2,523	2.2
1992	11,550,126	11,205,298	114,000	196,176	205,432	2,480	2.2
1993	11,767,409	11,159,938	119,768	199,039	212,497	2,719	2.3
1994	11,992,578	11,393,982	120,929	206,183	223,458	2,722	2.3
1995	12,019,156	11,557,811	127,800	228,589	233,900	2,847	2.2
1996	12,343,598	12,003,930	129,637	241,377	243,320	2,806	2.2
1997	12,691,835	12,170,375	133,276	240,639	240,001	2,811	2.1
1998	13,012,132	11,277,808	136,680	245,440	241,863	2,889	2.1
1999	13,398,895	11,611,993	140,868	243,409	232,225	2,920	2.1
2000	14,041,846	11,948,485	149,857	246,541	231,588	2,999	2
2001	14,346,373	13,448,202	171,029	256,169	234,600	3,013	1.8
2002	14,604,720	12,989,278	178,680	250,470	229,611	3,143	1.8
2003	14,788,685	14,080,886	185,642	243,294	221,639	3,179	1.7

* In Millions

** Per 100 Million Vehicle Miles of Travel

+ Decrease Reflects Change in Accounting Method

++ Beginning in Year 1998, Does Not include Count of Trailers with Tags

NOTE: All 1992 data in this publication has been updated from preliminary figures published in the *Department of Highway Safety and Motor Vehicles Traffic Crash Data, 1992*. Figures from the 1992 publication should not be used for year-to-year comparisons.

Holiday Traffic Fatalities

2003 Florida Traffic Crash Statistics

TABLE 18

HOLIDAY PERIOD		1999	2000	2001	2002	2003
New Year	Hours	96	72	96	96	48
	Fatalities	31	25	30	33	20
	Rate*	0.32	0.35	0.31	0.34	0.42
	Alcohol Related Fatalities	13	12	10	7	11
Memorial Day	Hours	96	96	96	96	96
	Fatalities	25	43	45	30	46
	Rate*	0.26	0.45	0.47	0.31	0.48
	Alcohol Related Fatalities	11	15	20	8	24
Independence Day	Hours	96	120	48	48	96
	Fatalities	31	36	20	7	30
	Rate*	0.32	0.30	0.42	0.15	0.31
	Alcohol Related Fatalities	11	10	12	4	14
Labor Day	Hours	96	96	96	96	96
	Fatalities	26	32	22	42	36
	Rate*	0.27	0.33	0.23	0.44	0.38
	Alcohol Related Fatalities	10	13	8	18	17
Thanksgiving	Hours	120	120	120	120	120
	Fatalities	41	39	36	49	48
	Rate*	0.34	0.33	0.30	0.41	0.40
	Alcohol Related Fatalities	11	14	17	22	14
Christmas	Hours	72	96	96	48	48
	Fatalities	28	38	42	19	18
	Rate*	0.39	0.40	0.44	0.40	0.38
	Alcohol Related Fatalities	12	11	14	3	4
All Days in Year	Hours	8,760	8,784	8,760	8,760	8,760
	Fatalities	2,920	2,999	3,013	3,143	3,179
	Rate*	0.33	0.34	0.34	0.36	0.36
	Alcohol Related Fatalities	936	979	1,000	1,007	1,096

* Fatalities Per Hour

NOTE: Memorial Day 2003 Holiday experienced the highest fatality rate per hour (0.48) with 46 people killed in the 96 hour holiday period. 52.2% (24) of these fatalities had alcohol involved in the crash.

Traffic Crashes By Month

2003 Florida Traffic Crash Statistics

CHART 6

All Crashes By Month

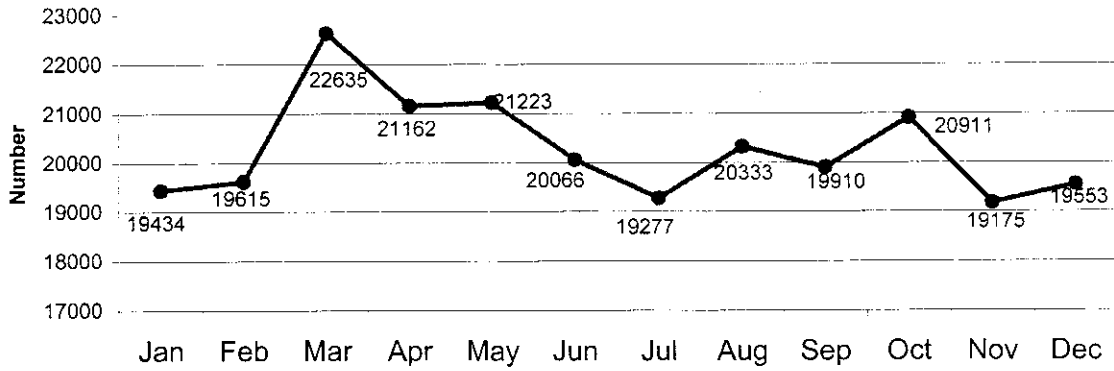
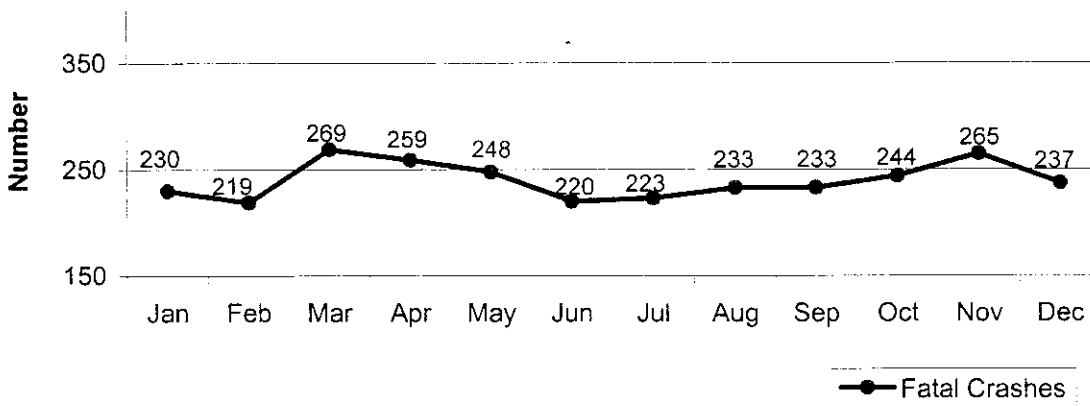


CHART 7

Fatal Crashes By Month



Traffic Crashes by Day of Week/Time of Day

2003 Florida Traffic Crash Statistics

TABLE 19
Motor Vehicle Crashes by Day of Week and Time of Day

Time of Crash Hour Beginning	Total		Monday		Tuesday		Wednesday		Thursday		Friday		Saturday		Sunday	
	All	Fatal	All	Fatal	All	Fatal	All	Fatal	All	Fatal	All	Fatal	All	Fatal	All	Fatal
Midnight	6,199	123	724	16	588	12	656	7	588	14	743	18	1,505	35	1,395	21
1:00	4,972	106	518	19	404	6	516	10	520	8	602	12	1,204	29	1,208	22
2:00	5,172	138	427	13	379	12	476	10	478	13	682	18	1,364	35	1,366	37
3:00	3,860	80	330	6	279	5	367	7	373	12	509	9	970	17	1,032	24
4:00	2,966	77	292	8	260	5	287	8	288	7	372	8	705	30	762	11
5:00	3,080	73	408	8	331	7	325	10	358	10	466	8	594	16	598	14
6:00	5,397	102	819	16	874	18	867	12	872	11	899	12	583	17	483	16
7:00	9,821	97	1,680	14	1,739	14	1,838	13	1,701	16	1,609	16	731	15	523	9
8:00	10,358	88	1,783	8	1,760	8	1,870	20	1,789	16	1,654	12	928	17	574	7
9:00	8,867	83	1,440	9	1,420	13	1,407	8	1,351	15	1,378	13	1,110	15	761	10
10:00	9,506	90	1,406	14	1,420	8	1,410	17	1,375	13	1,501	14	1,384	14	1,010	10
11:00	11,214	99	1,670	12	1,643	18	1,670	12	1,578	13	1,807	15	1,681	13	1,165	16
Noon	13,312	113	1,920	14	1,943	18	1,940	14	1,949	12	2,182	17	1,871	22	1,507	16
1:00	13,549	128	1,952	22	1,961	20	1,887	16	1,928	21	2,208	14	2,002	11	1,611	24
2:00	14,898	121	2,183	21	2,157	23	2,197	14	2,149	10	2,616	17	1,950	14	1,646	22
3:00	17,478	136	2,651	19	2,609	18	2,711	24	2,654	22	3,116	21	2,084	16	1,653	16
4:00	18,041	146	2,738	17	2,734	15	2,756	22	2,707	20	3,266	26	2,129	26	1,711	20
5:00	18,360	143	2,795	17	2,882	23	2,843	19	2,840	13	3,226	26	2,023	17	1,751	28
6:00	14,924	127	2,142	24	2,230	13	2,145	18	2,182	13	2,430	17	2,040	25	1,755	17
7:00	11,720	191	1,524	25	1,493	24	1,666	21	1,597	28	2,049	35	1,842	25	1,549	33
8:00	10,199	151	1,203	18	1,264	19	1,375	17	1,411	14	1,777	26	1,711	31	1,458	26
9:00	9,684	160	1,152	16	1,197	21	1,237	23	1,387	21	1,747	29	1,693	25	1,271	25
10:00	8,305	156	839	20	968	13	1,013	27	1,121	17	1,710	36	1,571	26	1,083	17
11:00	7,202	128	721	10	710	19	855	15	928	8	1,538	24	1,580	34	870	18
Not Stated	4,210	24	606	2	555	4	512	1	552	2	655	4	671	4	659	7
Total	243,294	2,880	33,923	368	33,800	356	34,826	365	34,676	349	40,742	447	35,926	529	29,401	466

NOTE: Friday, during the 4 P.M. hour, had the highest number of all types of crashes (3,266). Sunday, during the 2 A.M. hour, had the highest number of fatal crashes in Florida (37). Friday, during the 10 P.M. hour, came in second with 36 fatal crashes.

Contributing Causes*

2003 Florida Traffic Crash Statistics

TABLE 20 **Actions Attributed to Drivers Involved in Crashes**

Driver Actions	Type of Crash					
	Fatal	%	Injury	%	Vehicle and/or Property Damage Only	%
Speed Too Fast	464	13.49	5,001	3.52	1,302	2.93
Failed/Yield Right-of-Way	445	12.94	28,181	19.82	6,585	14.84
Disregard Stop Sign	67	1.95	2,638	1.86	636	1.43
Disregard Traffic Signal	109	3.17	6,602	4.64	1,498	3.38
Drove Left of Center	135	3.92	1,131	0.80	280	0.63
Follow Too Closely	3	0.09	5,873	4.13	1,850	4.17
Alcohol Under Influence	438	12.73	4,075	2.87	3,869	8.72
Careless Driving	913	26.54	51,806	36.44	15,428	34.76
Mechanical Defect	36	1.05	1,488	1.05	555	1.25
Driver Distraction	20	0.58	1,264	0.89	382	0.86
Other	810	23.55	34,124	24.00	11,995	27.03
Total	3,440	100	142,183	100	44,380	100

* This table lists contributing causes reported by the investigating officer for drivers in traffic crashes. There can be up to three contributing causes per driver.

Environmental Causes

2003 Florida Traffic Crash Statistics

TABLE 21 Lighting Conditions at the Time of Crash

Lighting Conditions	All Crashes	Fatal Crashes	Injury Crashes	Vehicle and/or Property Damage Only Crashes
Daylight	156,572	1,332	96,237	59,003
Dusk	6,828	74	3,889	2,865
Dawn	3,010	39	1,737	1,234
Darkness	73,063	1,420	36,292	35,351
Unknown	3,821	15	736	3,070
Total	243,294	2,880	138,891	101,523

TABLE 22 Road Surface Conditions at the Time of Crash

Surface Conditions	All Crashes	Fatal Crashes	Injury Crashes	Vehicle and/or Property Damage Only Crashes
Dry	203,924	2,494	116,301	85,129
Wet	34,780	361	20,648	13,771
Slippery	1,429	9	941	479
Icy	61	2	32	27
Other	3,100	14	969	2,117
Total	243,294	2,880	138,891	101,523

Vehicle Harmful Events*

2003 Florida Traffic Crash Statistics

TABLE 23

Vehicle Harmful Events	Type of Crash					
	Fatal	%	Injury	%	Vehicle and/or Property Damage Only	%
Collision With MV in Transport (Rear-end)	242	3.97	69,327	24.69	21,880	20.59
Collision With MV in Transport (Head-on)	377	6.18	7,306	2.60	1,913	1.80
Collision With MV in Transport (Angle)	1,042	17.09	46,037	16.40	14,440	13.59
Collision With MV in Transport (Left Turn)	233	3.82	15,454	5.50	4,305	4.05
Collision With MV in Transport (Right Turn)	10	0.16	1,636	0.58	903	0.85
Collision With MV in Transport (Sideswipe)	154	2.53	9,168	3.27	6,922	6.51
Collision With MV in Transport (Backed Into)	7	0.11	1,129	0.40	1,290	1.21
Collision With Parked Car	51	0.84	2,262	0.81	1,746	1.64
Collision With MV on Other Roadway	109	1.79	10,802	3.85	4,762	4.48
Collision With Pedestrian	426	6.99	5,078	1.81	61	0.06
Collision With Bicycle	77	1.26	3,909	1.39	264	0.25
Collision With Moped	1	0.02	425	0.15	29	0.03
Collision With Train	9	0.15	30	0.01	31	0.03
Collision With Animal	6	0.10	247	0.09	164	0.15
Collision With Fixed Object	1,103	18.09	23,328	8.31	10,036	9.44
Collision With Moveable Object On Road	26	0.43	843	0.30	890	0.84
Collision With Fixed Object Above Road	35	0.57	1,124	0.40	679	0.64
Ran Off Road Into Water	77	1.26	736	0.26	391	0.37
Overtuned	660	10.82	8,301	2.96	1,245	1.17
Median Crossover	62	1.02	580	0.21	237	0.22
All Other	1,390	22.80	73,065	26.02	34,080	32.07
Total	6,097	100	280,787	100	106,268	100

* This table lists harmful events reported by the investigating officer for vehicles in traffic crashes. There can be up to four harmful events per vehicle.

County Data

2003 Florida Traffic Crash Statistics

TABLE 24

5 YEAR CRASH HISTORY BY COUNTY

COUNTY	1999	2000	2001	2002	2003	COUNTY	1999	2000	2001	2002	2003
ALACHUA	3,874	3,818	4,007	4,140	3,937	LEVY	402	388	412	407	416
BAKER	248	240	240	234	220	LIBERTY	79	65	55	70	65
BAY	1,979	1,916	1,996	2,296	2,223	MADISON	251	235	222	244	234
BRADFORD	223	220	353	306	341	MANATEE	3,368	3,329	3,640	3,537	3,700
BREVARD	4,713	4,756	4,672	4,515	4,562	MARION	2,939	3,017	2,979	3,320	3,476
BROWARD	27,435	27,814	28,262	27,096	26,444	MARTIN	1,436	1,370	1,637	1,725	1,659
CALHOUN	110	116	113	105	98	MIAMI-DADE	49,804	51,132	54,519	49,922	45,731
CHARLOTTE	1,580	1,587	1,661	1,702	1,818	MONROE	1,363	1,396	1,608	1,649	1,610
CITRUS	976	933	1,064	860	809	NASSAU	542	545	580	581	460
CLAY	1,303	1,340	1,289	1,863	1,762	OKALOOSA	1,747	1,781	2,025	2,048	2,074
COLLIER	2,771	2,854	3,003	2,901	2,737	OKEECHOBEE	414	347	308	373	406
COLUMBIA	654	711	806	828	801	ORANGE	16,604	15,840	16,003	14,918	14,654
DE SOTO	304	320	356	295	303	OSCEOLA	2,272	2,064	2,304	2,081	1,973
DIXIE	126	134	129	143	182	PALM BEACH	14,387	15,079	15,731	14,906	15,409
DUVAL	13,664	14,389	14,852	15,099	13,435	PASCO	4,104	3,946	3,806	3,956	3,999
ESCAMBIA	3,820	3,723	3,828	3,944	4,296	PINELLAS	13,196	13,867	14,776	14,019	13,550
FLAGLER	382	438	326	460	508	POLK	7,220	6,525	6,553	6,606	6,635
FRANKLIN	98	94	103	126	107	PUTNAM	1,039	1,027	998	918	855
GADSDEN	631	705	696	647	704	ST. JOHNS	1,607	1,518	1,532	1,562	1,870
GILCHRIST	127	105	152	146	183	ST. LUCIE	2,086	2,003	2,229	2,093	2,074
GLADES	90	129	142	112	115	SANTA ROSA	1,114	1,070	1,157	1,184	1,259
GULF	143	143	88	119	97	SARASOTA	4,229	3,698	3,687	3,724	3,631
HAMILTON	114	135	137	156	148	SEMINOLE	3,284	3,314	3,188	2,980	2,972
HARDEE	256	306	330	297	268	SUMTER	561	495	509	528	547
HENDRY	364	313	303	332	355	SUWANNEE	470	393	379	416	389
HERNANDO	1,231	1,253	1,285	1,361	1,292	TAYLOR	242	196	219	246	242
HIGHLANDS	583	578	699	732	770	UNION	88	77	116	90	90
HILLSBOROUGH	18,091	20,192	20,604	21,609	21,242	VOLUSIA	6,468	6,448	6,621	6,570	6,244
HOLMES	133	125	143	126	147	WAKULLA	231	231	224	251	255
INDIAN RIVER	1,233	1,358	1,479	1,435	1,375	WALTON	500	493	519	516	567
JACKSON	492	496	504	521	523	WASHINGTON	196	202	204	188	174
JEFFERSON	163	206	188	162	131	UNKNOWN	127	56	8	0	2
LAFAYETTE	84	64	51	59	59	STATEWIDE	243,409	246,541	256,169	250,470	243,294
LAKE	2,239	2,256	2,331	2,390	2,409						
LEE	4,919	5,008	5,525	5,634	5,963						
LEON	5,886	5,619	5,704	6,091	5,708						

County Data

2003 Florida Traffic Crash Statistics

TABLE 25

5 YEAR ALCOHOL-RELATED CRASH HISTORY BY COUNTY

COUNTY	1999	2000	2001	2002	2003	COUNTY	1999	2000	2001	2002	2003
ALACHUA	385	397	381	355	339	LEVY	77	75	73	47	66
BAKER	47	36	38	33	34	LIBERTY	17	10	14	12	20
BAY	368	386	363	371	380	MADISON	32	28	25	26	32
BRADFORD	42	41	48	27	52	MANATEE	490	497	560	421	442
BREVARD	735	728	729	673	686	MARION	304	319	313	278	315
BROWARD	1,984	2,002	2,026	1,619	1,821	MARTIN	238	236	237	247	241
CALHOUN	30	28	32	20	15	MIAMI-DADE	2,036	2,007	2,314	1,876	2,027
CHARLOTTE	166	196	203	181	191	MONROE	211	260	264	244	267
CITRUS	120	137	153	141	125	NASSAU	66	80	94	80	90
CLAY	156	194	180	201	203	OKALOOSA	298	302	321	324	352
COLLIER	395	452	472	426	413	OKEECHOBEE	59	62	57	62	70
COLUMBIA	91	108	117	122	113	ORANGE	1,366	1,444	1,382	1,052	1,193
DE SOTO	34	49	58	37	31	OSCEOLA	222	190	244	194	182
DIXIE	32	35	28	23	34	PALM BEACH	1,298	1,354	1,439	1,283	1,415
DUVAL	1,101	1,311	1,298	1,177	1,159	PASCO	446	480	506	483	516
ESCAMBIA	527	512	486	515	602	PINELLAS	1,486	1,604	1,802	1,560	1,631
FLAGLER	46	58	52	49	68	POLK	707	672	660	577	597
FRANKLIN	18	20	27	38	29	PUTNAM	149	162	160	109	128
GADSDEN	100	112	111	92	89	ST. JOHNS	217	226	230	199	248
GILCHRIST	22	12	31	23	37	ST. LUCIE	242	235	237	239	238
GLADES	13	19	22	17	16	SANTA ROSA	138	135	142	143	135
GULF	23	29	20	24	20	SARASOTA	511	536	565	478	493
HAMILTON	19	19	17	27	18	SEMINOLE	348	404	373	321	412
HARDEE	26	30	28	26	33	SUMTER	78	63	64	56	44
HENDRY	56	46	47	52	45	SUWANNEE	56	76	62	55	59
HERNANDO	168	182	186	183	174	TAYLOR	37	35	36	43	36
HIGHLANDS	59	76	81	86	79	UNION	12	14	22	12	16
HILLSBOROUGH	1,705	2,073	2,112	1,939	1,986	VOLUSIA	743	803	792	736	738
HOLMES	24	20	27	24	18	WAKULLA	57	64	62	58	66
INDIAN RIVER	138	158	163	144	144	WALTON	98	111	69	85	88
JACKSON	58	78	66	82	79	WASHINGTON	39	27	29	31	28
JEFFERSON	14	24	23	28	12						
LAFAYETTE	17	18	6	11	13	UNKNOWN	7	3	0	0	0
LAKE	245	272	271	281	271						
LEE	685	691	806	686	800	STATEWIDE	22,252	23,578	24,411	21,533	22,752
LEON	518	515	555	469	438						

County Data

2003 Florida Traffic Crash Statistics

TABLE 26

5 YEAR FATALITY HISTORY BY COUNTY

COUNTY	1999	2000	2001	2002	2003	COUNTY	1999	2000	2001	2002	2003
ALACHUA	48	44	50	35	29	LEVY	16	21	16	13	15
BAKER	10	8	6	13	12	LIBERTY	1	1	1	2	7
BAY	28	25	34	26	38	MADISON	10	13	11	10	8
BRADFORD	3	13	7	7	14	MANATEE	58	59	59	43	77
BREVARD	81	76	79	113	87	MARION	74	80	86	82	115
BROWARD	214	221	199	184	185	MARTIN	26	38	23	32	33
CALHOUN	1	10	6	1	5	MIAMI-DADE	316	302	313	353	325
CHARLOTTE	31	39	20	24	19	MONROE	25	21	23	19	26
CITRUS	26	27	21	33	32	NASSAU	18	14	20	11	14
CLAY	16	19	18	20	17	OKALOOSA	16	21	29	36	27
COLLIER	60	67	66	64	79	OKEECHOBEE	7	10	16	12	21
COLUMBIA	18	23	21	29	32	ORANGE	153	153	169	164	169
DE SOTO	14	21	10	13	11	OSCEOLA	50	55	52	74	56
DIXIE	3	4	7	4	8	PALM BEACH	189	173	197	198	208
DUVAL	116	106	119	118	122	PASCO	79	81	102	97	83
ESCAMBIA	38	42	47	45	42	PINELLAS	116	122	100	119	103
FLAGLER	16	18	16	16	17	POLK	123	125	111	127	116
FRANKLIN	1	4	2	5	5	PUTNAM	19	33	24	27	24
GADSDEN	21	13	23	13	19	ST. JOHNS	45	38	30	36	31
GILCHRIST	6	5	3	6	8	ST. LUCIE	31	31	58	48	42
GLADES	8	11	9	8	6	SANTA ROSA	15	15	15	21	38
GULF	1	1	4	2	6	SARASOTA	35	57	41	48	71
HAMILTON	2	5	3	13	10	SEMINOLE	40	38	44	33	24
HARDEE	14	10	19	9	9	SUMTER	33	17	19	27	13
HENDRY	14	11	19	16	13	SUWANNEE	14	12	10	23	14
HERNANDO	25	27	25	25	34	TAYLOR	15	10	5	7	8
HIGHLANDS	30	23	21	35	21	UNION	3	2	3	4	4
HILLSBOROUGH	197	199	177	223	198	VOLUSIA	86	80	96	112	91
HOLMES	7	8	7	10	7	WAKULLA	6	10	5	4	9
INDIAN RIVER	22	20	32	28	42	WALTON	16	17	15	17	20
JACKSON	25	17	22	17	24	WASHINGTON	12	11	18	7	3
JEFFERSON	12	12	9	11	4	UNKNOWN	1	0	0	0	0
LAFAYETTE	2	3	2	2	0	STATEWIDE	2,920	2,999	3,013	3,143	3,179
LAKE	47	59	61	71	72						
LEE	99	103	113	71	121						
LEON	16	45	25	27	36						

County Data

2003 Florida Traffic Crash Statistics

TABLE 27

5 YEAR ALCOHOL-RELATED FATALITY HISTORY BY COUNTY

COUNTY	1999	2000	2001	2002	2003	COUNTY	1999	2000	2001	2002	2003
ALACHUA	12	19	17	9	12	LEVY	10	9	6	9	4
BAKER	6	2	5	4	9	LIBERTY	0	0	1	1	6
BAY	12	6	15	8	15	MADISON	3	5	7	3	1
BRADFORD	0	3	5	4	8	MANATEE	23	15	27	12	24
BREVARD	34	21	31	35	36	MARION	28	37	38	33	49
BROWARD	62	35	52	29	59	MARTIN	6	13	2	10	6
CALHOUN	0	4	4	0	2	MIAMI-DADE	59	51	70	84	78
CHARLOTTE	11	14	7	4	6	MONROE	12	8	10	10	6
CITRUS	5	7	7	7	7	NASSAU	8	5	7	4	12
CLAY	6	8	4	5	7	OKALOOSA	9	5	6	14	12
COLLIER	13	13	17	16	21	OKEECHOBEE	4	4	4	6	11
COLUMBIA	5	6	9	8	10	ORANGE	49	57	65	64	66
DE SOTO	3	9	5	4	7	OSCEOLA	10	18	16	28	23
DIXIE	1	3	4	3	4	PALM BEACH	54	47	58	58	54
DUVAL	37	41	50	38	35	PASCO	36	38	34	33	33
ESCAMBIA	18	24	24	17	20	PINELLAS	40	55	33	51	37
FLAGLER	4	7	7	8	8	POLK	28	42	31	38	36
FRANKLIN	1	2	2	1	2	PUTNAM	8	16	11	11	11
GADSDEN	12	8	10	5	7	ST. JOHNS	13	8	5	17	9
GILCHRIST	2	1	2	3	1	ST. LUCIE	6	9	16	14	13
GLADES	5	6	6	6	3	SANTA ROSA	11	6	6	11	10
GULF	1	1	3	1	5	SARASOTA	12	21	13	16	34
HAMILTON	2	1	0	2	5	SEMINOLE	13	10	12	3	12
HARDEE	2	4	3	1	3	SUMTER	11	5	4	6	2
HENDRY	9	4	11	9	5	SUWANNEE	7	6	6	5	8
HERNANDO	8	9	3	3	7	TAYLOR	8	4	1	2	3
HIGHLANDS	8	13	10	10	7	UNION	0	0	1	1	1
HILLSBOROUGH	78	70	62	79	73	VOLUSIA	34	38	30	48	42
HOLMES	0	4	4	5	2	WAKULLA	3	7	3	1	5
INDIAN RIVER	3	2	11	6	9	WALTON	8	6	5	10	8
JACKSON	6	7	7	7	7	WASHINGTON	4	2	2	4	2
JEFFERSON	5	3	0	3	2	UNKNOWN	0	0	0	0	0
LAFAYETTE	2	1	2	0	0	STATEWIDE	936	979	1,000	1,007	1,096
LAKE	12	17	21	27	20						
LEE	29	38	42	24	42						
LEON	5	19	8	9	12						

County Data

2003 Florida Traffic Crash Statistics

TABLE 28

5 YEAR INJURY HISTORY BY COUNTY

COUNTY	1999	2000	2001	2002	2003	COUNTY	1999	2000	2001	2002	2003
ALACHUA	3,355	3,185	3,176	3,164	2,955	LEVY	475	459	472	437	455
BAKER	259	238	265	266	251	LIBERTY	99	76	70	91	68
BAY	2,045	1,864	1,908	2,132	2,121	MADISON	301	258	261	275	241
BRADFORD	237	230	321	319	327	MANATEE	3,465	3,027	3,120	3,090	3,123
BREVARD	4,986	5,101	4,850	4,787	4,932	MARION	3,543	3,966	3,636	3,738	3,839
BROWARD	25,936	25,608	25,530	24,887	24,023	MARTIN	1,510	1,316	1,479	1,535	1,496
CALHOUN	141	148	132	125	128	MIAMI-DADE	40,641	40,714	43,954	41,699	37,676
CHARLOTTE	1,516	1,459	1,502	1,474	1,489	MONROE	1,220	1,304	1,387	1,386	1,348
CITRUS	1,124	1,052	1,086	911	956	NASSAU	601	522	567	585	439
CLAY	1,239	1,190	1,208	1,494	1,269	OKALOOSA	1,760	1,679	1,799	1,923	1,891
COLLIER	2,638	2,620	2,722	2,575	2,333	OKEECHOBEE	452	404	354	421	467
COLUMBIA	797	845	888	1,034	930	ORANGE	16,974	17,378	16,581	15,344	14,986
DE SOTO	417	370	467	319	307	OSCEOLA	2,693	2,412	2,543	2,416	2,053
DIXIE	139	141	135	136	140	PALM BEACH	14,741	15,169	15,570	14,677	14,876
DUVAL	11,020	11,289	11,053	11,457	9,778	PASCO	4,736	4,878	4,526	4,323	4,435
ESCAMBIA	4,227	4,196	4,388	4,440	4,744	PINELLAS	13,243	13,308	13,312	12,147	11,310
FLAGLER	426	559	440	634	638	POLK	7,379	6,738	6,806	7,027	6,888
FRANKLIN	98	101	120	132	99	PUTNAM	936	954	879	744	825
GADSDEN	716	731	650	700	668	ST. JOHNS	1,624	1,631	1,555	1,569	1,981
GILCHRIST	142	123	144	154	164	ST. LUCIE	2,176	1,979	2,279	2,143	2,164
GLADES	98	156	128	114	84	SANTA ROSA	1,468	1,449	1,572	1,552	1,690
GULF	157	155	86	129	105	SARASOTA	4,180	3,600	3,390	3,455	3,357
HAMILTON	175	161	167	151	144	SEMINOLE	2,874	2,887	2,770	2,757	2,707
HARDEE	307	350	406	339	239	SUMTER	698	587	624	643	682
HENDRY	427	355	275	361	342	SUWANNEE	445	464	434	455	374
HERNANDO	1,526	1,614	1,597	1,692	1,672	TAYLOR	244	207	221	225	244
HIGHLANDS	725	750	787	736	763	UNION	108	111	126	91	112
HILLSBOROUGH	17,864	19,063	19,022	19,214	19,063	VOLUSIA	5,784	5,766	5,760	5,671	5,629
HOLMES	161	195	155	164	190	WAKULLA	294	275	259	274	292
INDIAN RIVER	1,211	1,195	1,326	1,321	1,273	WALTON	671	583	703	584	673
JACKSON	649	664	614	543	666	WASHINGTON	254	260	237	235	174
JEFFERSON	198	259	254	205	137						
LAFAYETTE	75	65	53	62	40	UNKNOWN	99	51	7	0	8
LAKE	2,230	2,182	2,357	2,346	2,442						
LEE	4,974	4,854	4,967	5,096	5,571	STATEWIDE	232,225	231,588	234,600	229,611	221,639
LEON	4,302	4,108	4,168	4,486	4,153						

County Data

2003 Florida Traffic Crash Statistics

TABLE 29 5 YEAR ALCOHOL-RELATED INJURY HISTORY BY COUNTY

COUNTY	1999	2000	2001	2002	2003	COUNTY	1999	2000	2001	2002	2003
ALACHUA	297	285	269	237	228	LEVY	77	84	84	51	55
BAKER	48	45	47	26	32	LIBERTY	13	9	17	16	14
BAY	310	323	249	260	243	MADISON	33	27	29	11	29
BRADFORD	52	47	43	28	47	MANATEE	446	417	387	320	295
BREVARD	586	606	562	525	502	MARION	291	351	324	281	300
BROWARD	1,640	1,573	1,713	1,350	1,475	MARTIN	190	149	153	131	159
CALHOUN	36	36	31	23	17	MIAMI-DADE	1,727	1,709	2,040	1,530	1,606
CHARLOTTE	145	192	180	127	150	MONROE	170	183	203	151	185
CITRUS	109	134	164	126	92	NASSAU	56	70	84	67	60
CLAY	116	135	132	128	124	OKALOOSA	206	206	203	251	203
COLLIER	290	351	370	285	325	OKEECHOBEE	66	50	59	58	64
COLUMBIA	94	102	116	117	95	ORANGE	1,183	1,351	1,181	872	1,007
DE SOTO	31	44	100	25	29	OSCEOLA	245	194	221	163	161
DIXIE	25	32	25	18	24	PALM BEACH	1,117	1,115	1,208	1,025	1,076
DUVAL	825	971	905	778	776	PASCO	407	470	434	383	449
ESCAMBIA	429	429	448	439	482	PINELLAS	1,302	1,286	1,433	1,218	1,180
FLAGLER	46	58	56	48	67	POLK	684	629	519	515	475
FRANKLIN	21	21	25	26	25	PUTNAM	142	160	147	76	126
GADSDEN	113	113	109	102	76	ST. JOHNS	215	208	186	140	201
GILCHRIST	20	13	24	23	30	ST. LUCIE	219	173	180	163	179
GLADES	7	22	16	20	15	SANTA ROSA	141	127	148	156	121
GULF	27	27	17	23	21	SARASOTA	428	388	417	338	320
HAMILTON	22	17	12	18	18	SEMINOLE	238	278	258	198	266
HARDEE	20	26	21	30	35	SUMTER	82	66	66	54	31
HENDRY	69	49	36	59	28	SUWANNEE	67	63	63	47	47
HERNANDO	159	149	184	143	142	TAYLOR	33	23	23	33	27
HIGHLANDS	51	86	58	74	55	UNION	13	13	26	12	26
HILLSBOROUGH	1,533	1,766	1,779	1,512	1,442	VOLUSIA	592	671	611	548	544
HOLMES	20	34	18	10	17	WAKULLA	61	65	50	42	58
INDIAN RIVER	112	131	130	122	96	WALTON	92	102	75	81	80
JACKSON	70	74	65	65	75	WASHINGTON	39	28	23	29	25
JEFFERSON	16	19	28	25	13						
LAFAYETTE	9	14	6	11	9	UNKNOWN	1	2	0	0	0
LAKE	208	230	207	219	210						
LEE	572	560	625	524	676	STATEWIDE	19,073	19,775	20,001	16,864	17,379
LEON	369	394	379	358	319						

County Data

2003 Florida Traffic Crash Statistics

**5 YEAR VEHICLE AND/OR PROPERTY DAMAGE ONLY CRASH
HISTORY BY COUNTY**

TABLE 30

COUNTY	1999	2000	2001	2002	2003	COUNTY	1999	2000	2001	2002	2003
ALACHUA	1,675	1,652	1,867	1,944	1,926	LEVY	121	109	128	134	151
BAKER	81	84	79	75	63	LIBERTY	15	10	12	15	15
BAY	725	706	761	933	903	MADISON	69	74	66	83	75
BRADFORD	77	75	131	122	130	MANATEE	1,249	1,389	1,581	1,553	1,554
BREVARD	1,589	1,565	1,619	1,466	1,393	MARION	841	802	919	1,132	1,183
BROWARD	10,869	11,152	11,853	11,077	10,889	MARTIN	516	501	707	720	695
CALHOUN	21	21	25	27	18	MIAMI-DADE	24,774	25,713	27,825	24,717	22,670
CHARLOTTE	633	670	717	736	867	MONROE	478	477	639	658	638
CITRUS	314	287	387	275	247	NASSAU	183	203	203	215	176
CLAY	537	591	491	868	904	OKALOOSA	610	666	842	798	856
COLLIER	1,131	1,184	1,287	1,267	1,203	OKEECHOBEE	135	99	95	118	120
COLUMBIA	172	174	245	204	228	ORANGE	5,705	5,071	5,617	5,166	5,087
DE SOTO	83	87	103	94	113	OSCEOLA	717	639	755	651	685
DIXIE	42	44	37	55	81	PALM BEACH	5,052	5,372	5,830	5,488	5,722
DUVAL	6,374	6,865	7,399	7,405	6,759	PASCO	1,252	1,120	1,195	1,345	1,390
ESCAMBIA	1,228	1,111	1,082	1,182	1,438	PINELLAS	4,935	5,329	6,304	6,026	5,898
FLAGLER	99	93	55	102	124	POLK	2,755	2,383	2,391	2,347	2,356
FRANKLIN	35	24	32	37	33	PUTNAM	459	407	415	420	302
GADSDEN	224	249	264	214	280	ST. JOHNS	595	513	578	572	637
GILCHRIST	46	30	52	48	69	ST. LUCIE	776	768	840	796	773
GLADES	27	36	52	40	51	SANTA ROSA	242	250	255	304	286
GULF	45	52	29	28	23	SARASOTA	1,551	1,341	1,397	1,433	1,432
HAMILTON	28	30	29	47	51	SEMINOLE	1,308	1,350	1,281	1,134	1,148
HARDEE	81	102	101	95	108	SUMTER	160	147	162	154	159
HENDRY	112	91	110	122	126	SUWANNEE	195	118	118	119	129
HERNANDO	282	266	287	310	281	TAYLOR	86	62	82	96	87
HIGHLANDS	134	134	225	271	298	UNION	16	6	31	21	19
HILLSBOROUGH	6,859	8,038	8,477	9,153	8,989	VOLUSIA	2,655	2,617	2,764	2,677	2,374
HOLMES	19	20	37	40	27	WAKULLA	61	58	76	84	72
INDIAN RIVER	517	611	669	636	561	WALTON	124	132	119	173	177
JACKSON	108	128	155	165	143	WASHINGTON	39	34	49	46	51
JEFFERSON	31	50	43	34	36	UNKNOWN	66	18	4	0	0
LAFAYETTE	32	19	15	16	31	STATEWIDE	97,612	99,712	108,244	104,662	101,523
LAKE	796	865	879	896	862						
LEE	1,786	1,904	2,284	2,272	2,356						
LEON	3,060	2,924	3,086	3,211	2,995						

County Data

2003 Florida Traffic Crash Statistics

TABLE 31

5 YEAR MOTORCYCLE FATALITY HISTORY BY COUNTY

COUNTY	1999	2000	2001	2002	2003	COUNTY	1999	2000	2001	2002	2003
ALACHUA	3	3	1	1	2	LEVY	0	0	5	0	0
BAKER	0	0	0	0	0	LIBERTY	1	0	0	1	0
BAY	3	3	5	2	4	MADISON	0	0	1	0	0
BRADFORD	0	1	1	0	1	MANATEE	3	3	5	4	8
BREVARD	2	8	7	7	10	MARION	4	8	10	5	14
BROWARD	10	17	23	29	23	MARTIN	0	2	3	3	2
CALHOUN	0	0	0	0	0	MIAMI-DADE	19	22	33	27	43
CHARLOTTE	1	2	3	3	4	MONROE	3	7	3	1	2
CITRUS	1	4	1	3	5	NASSAU	0	0	1	1	2
CLAY	4	0	2	2	5	OKALOOSA	1	0	3	3	2
COLLIER	0	4	2	4	6	OKEECHOBEE	0	0	1	1	3
COLUMBIA	0	1	0	0	0	ORANGE	12	9	5	13	16
DE SOTO	0	1	0	0	1	OSCEOLA	2	6	2	2	5
DIXIE	0	0	3	0	0	PALM BEACH	10	14	13	23	16
DUVAL	5	9	8	12	16	PASCO	4	3	5	9	9
ESCAMBIA	1	5	4	5	6	PINELLAS	8	12	10	12	22
FLAGLER	2	3	0	4	2	POLK	2	9	5	6	8
FRANKLIN	0	0	0	0	2	PUTNAM	2	3	2	3	1
GADSDEN	1	0	1	0	1	ST. JOHNS	1	2	2	5	5
GILCHRIST	0	0	1	0	0	ST. LUCIE	3	2	4	7	1
GLADES	0	0	0	1	0	SANTA ROSA	0	1	1	2	2
GULF	1	0	0	0	0	SARASOTA	0	5	6	3	13
HAMILTON	0	0	0	0	1	SEMINOLE	1	5	7	3	3
HARDEE	0	0	1	1	0	SUMTER	3	1	0	0	0
HENDRY	0	1	1	0	0	SUWANNEE	0	0	1	1	1
HERNANDO	2	4	2	2	4	TAYLOR	0	0	0	0	0
HIGHLANDS	1	1	2	2	1	UNION	1	0	0	0	0
HILLSBOROUGH	13	16	14	22	24	VOLUSIA	18	17	15	21	16
HOLMES	0	0	1	0	0	WAKULLA	0	0	1	0	1
INDIAN RIVER	0	0	1	2	0	WALTON	0	1	0	0	0
JACKSON	0	0	2	0	1	WASHINGTON	0	0	2	0	0
JEFFERSON	0	0	1	0	0	UNKNOWN	0	0	0	0	0
LAFAYETTE	0	0	0	0	0	STATEWIDE	156	227	252	274	339
LAKE	3	6	7	5	4						
LEE	4	6	9	9	17						
LEON	1	0	3	2	4						

TABLE 32

5 YEAR MOTORCYCLE INJURY HISTORY BY COUNTY

COUNTY	1999	2000	2001	2002	2003	COUNTY	1999	2000	2001	2002	2003
ALACHUA	54	41	45	73	76	LEVY	8	9	15	9	14
BAKER	4	2	4	1	2	LIBERTY	0	0	0	1	3
BAY	42	50	47	84	69	MADISON	3	1	3	1	2
BRADFORD	2	7	4	9	7	MANATEE	67	69	78	76	94
BREVARD	120	132	186	155	220	MARION	52	71	63	82	99
BROWARD	400	488	473	453	513	MARTIN	26	36	32	42	53
CALHOUN	2	4	2	4	3	MIAMI-DADE	457	516	680	622	715
CHARLOTTE	23	34	47	40	44	MONROE	180	196	209	227	209
CITRUS	26	24	30	35	36	NASSAU	16	11	8	17	11
CLAY	21	33	40	46	53	OKALOOSA	44	33	38	49	52
COLLIER	28	49	45	65	60	OKEECHOBEE	13	9	7	9	18
COLUMBIA	10	17	14	24	18	ORANGE	255	273	264	312	357
DE SOTO	2	8	7	7	7	OSCEOLA	33	47	52	61	48
DIXIE	3	1	4	3	6	PALM BEACH	203	255	270	298	341
DUVAL	194	246	274	319	351	PASCO	86	81	68	99	139
ESCAMBIA	66	93	103	78	100	PINELLAS	199	237	289	317	337
FLAGLER	15	20	30	34	26	POLK	104	101	134	161	153
FRANKLIN	4	1	2	4	6	PUTNAM	19	19	29	15	23
GADSDEN	7	5	11	11	10	ST. JOHNS	45	50	61	76	86
GILCHRIST	2	5	1	6	3	ST. LUCIE	35	29	54	23	51
GLADES	2	5	4	2	4	SANTA ROSA	24	20	24	22	32
GULF	2	4	2	1	2	SARASOTA	93	90	79	94	87
HAMILTON	1	0	1	4	0	SEMINOLE	76	81	95	97	93
HARDEE	5	6	5	5	3	SUMTER	15	11	12	10	13
HENDRY	7	4	4	6	7	SUWANNEE	2	9	4	6	7
HERNANDO	39	40	51	45	47	TAYLOR	2	1	1	6	2
HIGHLANDS	17	17	15	19	16	UNION	0	3	2	0	1
HILLSBOROUGH	233	278	317	346	435	VOLUSIA	335	354	440	437	435
HOLMES	3	2	2	2	4	WAKULLA	5	2	4	5	10
INDIAN RIVER	13	21	27	25	33	WALTON	11	10	14	14	15
JACKSON	9	6	7	4	7	WASHINGTON	3	2	1	6	7
JEFFERSON	1	3	5	3	1	UNKNOWN	1	0	0	0	0
LAFAYETTE	1	0	0	2	1	STATEWIDE	3,969	4,476	5,101	5,384	5,973
LAKE	53	44	79	62	68						
LEE	89	92	117	139	145						
LEON	57	68	66	74	83						

TABLE 33 5 YEAR BICYCLE FATALITY HISTORY BY COUNTY

COUNTY	1999	2000	2001	2002	2003	COUNTY	1999	2000	2001	2002	2003
ALACHUA	5	0	4	2	2	LEVY	0	0	0	0	0
BAKER	0	0	0	0	0	LIBERTY	0	0	0	0	0
BAY	2	1	3	1	2	MADISON	0	0	0	0	0
BRADFORD	0	0	0	0	0	MANATEE	3	4	3	2	1
BREVARD	3	0	2	3	1	MARION	2	1	4	2	2
BROWARD	14	6	6	4	5	MARTIN	3	1	1	0	2
CALHOUN	0	0	1	0	0	MIAMI-DADE	11	6	10	17	11
CHARLOTTE	1	1	0	2	1	MONROE	2	1	0	1	1
CITRUS	0	0	0	3	0	NASSAU	0	0	0	0	0
CLAY	0	0	0	1	0	OKALOOSA	2	0	0	1	1
COLLIER	3	1	4	5	2	OKEECHOBEE	1	1	1	0	2
COLUMBIA	0	0	0	1	2	ORANGE	5	3	7	6	5
DE SOTO	1	1	0	0	2	OSCEOLA	2	3	3	3	1
DIXIE	0	0	0	0	0	PALM BEACH	4	4	11	8	9
DUVAL	4	5	3	2	1	PASCO	2	0	3	4	3
ESCAMBIA	0	2	1	1	2	PINELLAS	8	6	7	6	5
FLAGLER	1	0	1	1	1	POLK	3	3	4	1	2
FRANKLIN	0	0	0	0	0	PUTNAM	0	0	1	0	0
GADSDEN	1	0	0	0	0	ST. JOHNS	2	3	2	1	2
GILCHRIST	0	0	0	0	0	ST. LUCIE	2	2	2	1	1
GLADES	0	1	0	0	0	SANTA ROSA	0	1	0	1	2
GULF	0	0	0	0	0	SARASOTA	3	4	1	1	5
HAMILTON	0	0	0	0	0	SEMINOLE	1	2	0	0	1
HARDEE	0	0	0	0	0	SUMTER	0	0	0	1	0
HENDRY	0	0	0	0	1	SUWANNEE	0	0	0	0	0
HERNANDO	2	1	1	1	1	TAYLOR	0	0	0	0	0
HIGHLANDS	1	2	1	0	0	UNION	0	0	0	0	0
HILLSBOROUGH	9	8	9	9	9	VOLUSIA	1	2	4	2	2
HOLMES	0	0	0	0	0	WAKULLA	0	0	0	0	0
INDIAN RIVER	1	1	1	0	0	WALTON	0	0	0	0	0
JACKSON	2	1	0	0	0	WASHINGTON	0	0	0	0	0
JEFFERSON	0	0	0	0	0	UNKNOWN	1	0	0	0	0
LAFAYETTE	0	0	0	0	0	STATEWIDE	115	83	107	108	95
LAKE	0	1	2	5	1						
LEE	7	3	4	7	4						
LEON	0	1	0	2	0						

TABLE 34

5 YEAR BICYCLE INJURY HISTORY BY COUNTY

COUNTY	1999	2000	2001	2002	2003	COUNTY	1999	2000	2001	2002	2003
ALACHUA	120	108	102	121	107	LEVY	7	3	3	4	3
BAKER	0	1	4	2	6	LIBERTY	0	0	1	1	0
BAY	38	31	36	45	43	MADISON	3	1	3	0	2
BRADFORD	1	1	0	1	5	MANATEE	112	88	107	103	111
BREVARD	134	113	130	139	146	MARION	27	42	25	33	37
BROWARD	595	648	597	660	669	MARTIN	45	37	41	48	42
CALHOUN	0	2	2	0	1	MIAMI-DADE	605	582	543	566	596
CHARLOTTE	28	26	29	34	39	MONROE	64	100	83	98	93
CITRUS	15	5	10	15	14	NASSAU	8	4	3	9	4
CLAY	32	19	26	31	16	OKALOOSA	27	38	29	46	31
COLLIER	90	75	90	99	111	OKEECHOBEE	2	6	4	2	2
COLUMBIA	3	2	9	4	11	ORANGE	301	291	275	268	332
DE SOTO	10	11	6	10	10	OSCEOLA	42	40	45	38	38
DIXIE	2	0	0	0	2	PALM BEACH	354	390	362	421	378
DUVAL	212	171	218	254	211	PASCO	82	91	65	97	107
ESCAMBIA	59	54	75	69	84	PINELLAS	416	388	390	401	460
FLAGLER	5	7	6	12	9	POLK	118	90	92	115	112
FRANKLIN	0	1	3	2	0	PUTNAM	7	9	14	12	8
GADSDEN	7	3	1	1	8	ST. JOHNS	35	35	36	44	44
GILCHRIST	2	0	2	1	0	ST. LUCIE	34	40	37	47	51
GLADES	0	1	3	0	0	SANTA ROSA	8	14	9	12	23
GULF	0	0	0	2	2	SARASOTA	119	122	134	135	128
HAMILTON	0	0	1	1	0	SEMINOLE	82	66	39	77	69
HARDEE	2	2	3	4	0	SUMTER	8	2	2	8	6
HENDRY	8	5	4	7	8	SUWANNEE	3	5	3	3	0
HERNANDO	28	20	18	15	22	TAYLOR	3	1	2	2	4
HIGHLANDS	8	7	10	6	9	UNION	2	0	2	0	0
HILLSBOROUGH	357	376	323	417	355	VOLUSIA	207	169	184	187	172
HOLMES	1	0	1	0	0	WAKULLA	0	0	0	0	1
INDIAN RIVER	31	30	30	28	31	WALTON	3	7	1	4	7
JACKSON	1	2	4	1	4	WASHINGTON	4	2	0	1	2
JEFFERSON	0	1	2	0	1	UNKNOWN	4	0	0	0	1
LAFAYETTE	1	0	0	0	0	STATEWIDE	4,731	4,585	4,476	4,970	4,991
LAKE	24	24	30	29	35						
LEE	122	125	126	133	138						
LEON	63	51	41	45	30						

County Data

2003 Florida Traffic Crash Statistics

TABLE 35

5 YEAR PEDESTRIAN FATALITY HISTORY BY COUNTY

COUNTY	1999	2000	2001	2002	2003	COUNTY	1999	2000	2001	2002	2003
ALACHUA	2	9	4	2	3	LEVY	0	1	1	1	0
BAKER	2	1	0	1	0	LIBERTY	0	0	0	1	2
BAY	6	4	4	4	6	MADISON	0	1	0	0	0
BRADFORD	0	2	1	1	0	MANATEE	8	6	12	5	14
BREVARD	9	10	12	11	13	MARION	8	9	14	10	9
BROWARD	49	41	42	36	43	MARTIN	3	4	4	7	3
CALHOUN	0	0	0	0	0	MIAMI-DADE	82	81	71	82	74
CHARLOTTE	0	1	1	0	4	MONROE	6	4	4	1	5
CITRUS	6	1	4	5	6	NASSAU	1	0	3	1	2
CLAY	2	5	3	0	1	OKALOOSA	2	4	3	7	2
COLLIER	7	5	6	4	8	OKEECHOBEE	0	2	3	1	1
COLUMBIA	2	3	3	1	3	ORANGE	38	39	40	39	40
DE SOTO	1	2	1	0	0	OSCEOLA	4	9	6	5	6
DIXIE	0	2	1	0	1	PALM BEACH	29	32	35	25	44
DUVAL	19	21	23	21	16	PASCO	18	17	19	24	17
ESCAMBIA	12	8	6	10	7	PINELLAS	36	41	19	31	27
FLAGLER	2	2	0	1	3	POLK	16	15	13	15	13
FRANKLIN	0	0	1	0	0	PUTNAM	1	5	6	3	5
GADSDEN	5	2	3	0	3	ST. JOHNS	3	3	4	4	1
GILCHRIST	0	0	0	0	0	ST. LUCIE	3	4	7	6	3
GLADES	2	0	1	0	0	SANTA ROSA	0	1	4	5	5
GULF	0	0	1	0	0	SARASOTA	8	7	7	9	14
HAMILTON	0	1	0	0	0	SEMINOLE	7	4	7	6	3
HARDEE	2	0	0	3	0	SUMTER	1	1	3	2	2
HENDRY	2	2	3	3	2	SUWANNEE	0	1	1	2	1
HERNANDO	1	3	4	2	7	TAYLOR	0	0	0	1	0
HIGHLANDS	4	1	4	4	0	UNION	0	1	0	0	0
HILLSBOROUGH	50	35	40	36	36	VOLUSIA	13	17	18	20	16
HOLMES	1	0	1	0	1	WAKULLA	0	0	1	0	1
INDIAN RIVER	2	1	6	1	2	WALTON	0	2	2	2	6
JACKSON	2	1	1	2	2	WASHINGTON	1	0	0	0	0
JEFFERSON	1	0	1	1	0	UNKNOWN	0	0	0	0	0
LAFAYETTE	0	0	0	0	0	STATEWIDE	501	506	510	484	509
LAKE	4	3	8	7	4						
LEE	18	21	16	11	18						
LEON	0	8	2	2	4						

County Data

2003 Florida Traffic Crash Statistics

TABLE 36

5 YEAR PEDESTRIAN INJURY HISTORY BY COUNTY

COUNTY	1999	2000	2001	2002	2003	COUNTY	1999	2000	2001	2002	2003
ALACHUA	97	100	103	97	95	LEVY	5	9	6	7	6
BAKER	5	2	3	1	7	LIBERTY	3	2	0	1	0
BAY	72	60	62	67	73	MADISON	5	6	2	2	6
BRADFORD	6	5	11	10	8	MANATEE	122	107	139	130	102
BREVARD	171	167	151	175	155	MARION	60	75	88	74	67
BROWARD	903	969	993	938	1,040	MARTIN	55	46	35	42	39
CALHOUN	3	2	1	0	2	MIAMI-DADE	1,588	1,643	1,717	1,571	1,473
CHARLOTTE	27	45	32	47	49	MONROE	45	61	44	55	61
CITRUS	31	21	27	19	21	NASSAU	10	12	12	18	11
CLAY	46	45	43	49	44	OKALOOSA	39	49	58	52	43
COLLIER	79	99	109	73	84	OKEECHOBEE	13	13	15	9	11
COLUMBIA	17	18	19	19	11	ORANGE	610	545	560	494	467
DE SOTO	7	12	12	11	10	OSCEOLA	68	76	80	69	64
DIXIE	2	1	1	2	3	PALM BEACH	565	609	625	502	552
DUVAL	349	396	408	345	317	PASCO	112	110	124	123	124
ESCAMBIA	124	111	110	121	121	PINELLAS	436	476	438	443	393
FLAGLER	12	7	15	7	16	POLK	201	188	180	176	181
FRANKLIN	0	5	2	2	2	PUTNAM	20	33	30	29	35
GADSDEN	9	11	13	9	15	ST. JOHNS	39	44	27	41	47
GILCHRIST	2	3	3	2	5	ST. LUCIE	78	51	68	62	72
GLADES	2	0	2	2	0	SANTA ROSA	28	21	25	24	20
GULF	11	2	1	0	6	SARASOTA	125	119	117	124	124
HAMILTON	1	3	3	0	2	SEMINOLE	103	104	100	106	103
HARDEE	6	8	15	6	11	SUMTER	12	9	5	13	9
HENDRY	10	8	7	19	9	SUWANNEE	6	6	4	7	10
HERNANDO	47	38	49	44	39	TAYLOR	3	1	3	4	6
HIGHLANDS	17	9	16	23	13	UNION	3	4	1	0	1
HILLSBOROUGH	489	564	577	544	554	VOLUSIA	237	235	223	227	240
HOLMES	1	0	1	2	3	WAKULLA	2	3	2	8	1
INDIAN RIVER	38	40	26	26	39	WALTON	7	14	10	7	17
JACKSON	11	15	10	6	6	WASHINGTON	2	2	5	3	4
JEFFERSON	1	1	0	1	1	UNKNOWN	3	6	0	0	4
LAFAYETTE	3	4	2	2	1	STATEWIDE	7,536	7,782	7,894	7,447	7,449
LAKE	45	44	52	58	59						
LEE	192	192	164	178	219						
LEON	95	96	108	119	116						

Vehicle and Truck Information

2003 Florida Traffic Crash Statistics

TABLE 37 Vehicle Types in Crashes

Vehicle Type	All Crashes	Fatal Crashes	Injury Crashes	Vehicle and/or Property Damage Only Crashes
Automobile	236,919	2,261	167,508	67,148
Passenger Van	28,030	318	20,220	7,492
Light Truck (2 rear tires)	63,501	881	44,637	17,982
Medium Truck (4 rear tires)	4,932	96	3,336	1,500
Heavy Truck	4,196	115	2,616	1,465
Truck-Tractor (Cab)	4,588	174	2,631	1,783
Motor Home (RV)	258	5	160	93
Bus (driver + seats for 9-15)	368	2	232	134
Bus (driver + seats for over 15)	2,080	23	1,247	810
Bicycle	5,471	98	5,047	326
Motorcycle	6,839	384	6,162	293
Moped	761	3	720	38
All Terrain Vehicle	490	22	440	28
Train	59	5	26	28
Low Speed Vehicle	132	6	111	15
Other	3,400	43	2,398	959
Total	362,024	4,436	257,491	100,094

TABLE 38 Contributing Causes of Drivers in Truck Crashes*

Contributing Cause	Type of Truck			
	Light Pickup Truck	Medium Truck	Truck (Heavy)	Truck Tractor (Cab)
Careless Driving	13,360	992	855	870
Failed/Yield Right-of-Way	5,490	355	222	205
Improper Backing	588	111	121	98
Improper Lane Change	798	138	125	224
Improper Turn	1,044	113	81	115
Alcohol-Under Influence	1,873	34	10	15
Drugs-Under Influence	106	4	2	1
Alcohol & Drugs-Under Influ.	312	14	1	1
Followed Too Closely	1,588	148	80	80
Disregarded Traffic Signal	1,336	86	59	44
Exceeded Speed Limit	1,310	59	76	90
Disregarded Stop Sign	513	28	14	17
Failed to Maintain Equip.	396	51	97	55
Improper Passing	182	13	10	11
Drove Left of Center	344	18	16	22
Obstructing Traffic	71	16	12	19
Improper Load	76	24	27	27
Disregard Other Traff. Control	75	14	10	5
Driving Wrong Side/Way	125	4	5	1
Driver Distraction	348	18	8	13
All Other	4,632	406	357	391
Total	34,567	2,646	2,188	2,304

* There can be up to three contributing causes per driver.

Alcohol-Related Crashes By City/Locality

2003 Florida Traffic Crash Statistics

Locality	County	Total Crashes	Alcohol-Related		Locality	County	Total Crashes	Alcohol-Related	
			Crashes	as % of Total				Crashes	as % of Total
Alachua	Alachua	143	9	6.29	Bristol	Liberty	4	2	50.00
Alford	Jackson	5	2	40.00	Broadview	Broward	3	0	0.00
Altamonte Springs	Seminole	366	63	17.21	Bronson	Levy	11	0	0.00
Altha	Calhoun	6	1	16.67	Browardale	Broward	4	1	25.00
Anna Maria	Manatee	23	2	8.70	Browns Village	Miami-Dade	1	0	0.00
Apalachicola	Franklin	11	3	27.27	Bunnell	Flagler	40	8	20.00
Apopka	Orange	216	21	9.72	Bushnell	Sumter	69	4	5.80
Arcadia	DeSoto	91	5	5.49	Callahan	Nassau	19	3	15.79
Archer	Alachua	36	2	5.56	Calloway	Bay	80	10	12.50
Astula	Lake	3	0	0.00	Cantonment	Escambia	27	8	29.63
Atlantic Beach	Duval	163	27	16.56	Cape Canaveral	Brevard	70	22	31.43
Atlantis	Palm Beach	39	8	20.51	Cape Coral	Lee	1159	122	10.53
Auburndale	Polk	210	13	6.19	Carol City	Miami-Dade	123	5	4.07
Aventura	Miami-Dade	535	29	5.42	Carrabelle	Franklin	7	2	28.57
Avon Park	Highlands	168	13	7.74	Caryville	Washington	19	0	0.00
Bal Harbour	Miami-Dade	52	2	3.85	Casselberry	Seminole	248	42	16.94
Baldwin	Duval	9	0	0.00	Cedar Grove	Bay	44	5	11.36
Bartow	Polk	242	12	4.96	Cedar Key	Levy	2	2	100.00
Bay Harbor Islands	Miami-Dade	44	6	13.64	Center Hill	Sumter	6	3	50.00
Bay Lake	Orange	17	1	5.88	Century	Escambia	9	1	11.11
Bayard	Duval	3	1	33.33	Chattahoochee	Gadsden	12	0	0.00
Bell	Gilchrist	6	0	0.00	Chiefland	Levy	40	4	10.00
Belle Glade	Palm Beach	176	9	5.11	Cinco Bayou	Okaloosa	2	1	50.00
Belle Isle	Orange	3	0	0.00	Clair-Mel	Hillsborough	2	1	50.00
Belleair	Pinellas	10	0	0.00	Clearwater	Pinellas	1710	277	16.20
Belleair Beach	Pinellas	13	2	15.38	Clermont	Lake	178	22	12.36
Belleair Bluffs	Pinellas	36	4	11.11	Clewiston	Hendry	86	10	11.63
Bellview	Marion	121	11	9.09	Cocoa	Brevard	358	33	9.22
Belvedere Homes	Palm Beach	3	1	33.33	Cocoa Beach	Brevard	287	55	19.16
Biscayne Gardens	Miami-Dade	6	0	0.00	Cocoa West	Brevard	2	0	0.00
Biscayne Park	Miami-Dade	10	1	10.00	Coconut Creek	Broward	651	35	5.38
Blountstown	Calhoun	18	4	22.22	Collier Manor/Cresthaven	Broward	6	0	0.00
Boca Chica	Monroe	1	0	0.00	Conway	Orange	7	0	0.00
Boca Raton	Palm Beach	1359	92	6.77	Cooper City	Broward	232	20	8.62
Bonifay	Holmes	4	0	0.00	Coral Gables	Miami-Dade	928	62	6.68
Bonita Springs	Lee	241	52	21.58	Coral Springs	Broward	1764	64	3.63
Booker	Bradford	1	1	100.00	Cottondale	Jackson	1	0	0.00
Bowling Green	Hardee	25	2	8.00	Crawfordville	Wakulla	21	1	4.76
Boynton Beach	Palm Beach	941	92	9.78	Crescent City	Putnam	25	3	12.00
Bradenton	Manatee	239	13	5.44	Crestview	Okaloosa	356	30	8.43
Bradenton Beach	Manatee	29	9	31.03	Cross City	Dixie	29	3	10.34
Brandon	Hillsborough	107	9	8.41	Crystal River	Citrus	142	20	14.08
Branford	Suwannee	7	1	14.29	Cutler Ridge	Miami-Dade	31	1	3.23
Brent	Escambia	60	8	13.33	Dade City	Pasco	159	6	3.77
Briny Breezes	Palm Beach	3	0	0.00	Dania Beach	Broward	471	43	9.13

Alcohol-Related Crashes By City/Locality

2003 Florida Traffic Crash Statistics

Locality	County	Total Crashes	Alcohol-Related Crashes		Locality	County	Total Crashes	Alcohol-Related Crashes	
			Related Crashes	as % of Total				Related Crashes	as % of Total
Davenport	Polk	1	0	0.00	Fort Myers SE	Lee	5	1	20.00
Davie	Broward	1586	136	8.58	Fort Myers SW	Lee	19	2	10.53
Daytona Beach	Volusia	2121	165	7.78	Fort Myers Village/Pin Mn	Lee	21	1	4.76
Daytona Beach Shores	Volusia	53	14	26.42	Fort Pierce	St. Lucie	555	37	6.67
De Leon Springs	Volusia	15	1	6.67	Fort Pierce NW	St. Lucie	8	1	12.50
DeBary	Volusia	69	8	11.59	Fort Walton Beach	Okaloosa	356	53	14.89
Deerfield Beach	Broward	1127	68	6.03	Fort White	Columbia	4	1	25.00
Defuniak Springs	Walton	179	14	7.82	Freeport	Walton	15	4	26.67
DeLand	Volusia	307	27	8.79	Frostproof	Polk	22	5	22.73
Delray Beach	Palm Beach	1052	97	9.22	Fruitland Park	Lake	75	4	5.33
Deltona	Volusia	404	67	16.58	Gainesville	Alachua	2035	172	8.45
Destin	Walton	22	0	0.00	Glen Ridge	Palm Beach	1	0	0.00
Dinsmore	Duval	2	0	0.00	Glen St. Mary	Baker	4	0	0.00
Doctors Inlet	Clay	1	0	0.00	Golden Beach	Miami-Dade	6	1	16.67
Dundee	Polk	1	1	100.00	Golden Glades	Miami-Dade	5	0	0.00
Dunedin	Pinellas	478	65	13.60	Golf Village	Palm Beach	1	0	0.00
Dunnellon	Marion	8	0	0.00	Golfview	Palm Beach	1	0	0.00
Eagle Lake	Polk	7	1	14.29	Goulds	Miami-Dade	15	1	6.67
East Naples	Collier	379	70	18.47	Graceville	Jackson	8	1	12.50
Eastpoint	Franklin	6	3	50.00	Grand Ridge	Jackson	2	1	50.00
Eatonville	Orange	4	1	25.00	Green Cove Springs	Clay	97	6	6.19
Ebro	Washington	6	0	0.00	Greenacres City	Palm Beach	238	20	8.40
Eckerd College	Pinellas	6	2	33.33	Greensboro	Gadsden	2	1	50.00
Edgewater	Volusia	222	20	9.01	Greenville	Madison	5	1	20.00
Edgewood	Orange	68	3	4.41	Groveland	Lake	36	4	11.11
El Portal	Miami-Dade	1	0	0.00	Gulf Breeze	Santa Rosa	112	12	10.71
Englewood	Sarasota	6	1	16.67	Gulf Stream	Palm Beach	5	0	0.00
Englewood	Charlotte	300	14	4.67	Gulfport	Pinellas	91	10	10.99
Eustis	Lake	172	12	6.98	Haines City	Polk	267	13	4.87
Everglades	Collier	9	2	22.22	Hallandale	Broward	532	36	6.77
Fairview Shores	Orange	1	0	0.00	Hampton	Bradford	1	0	0.00
Fanning Springs	Gilchrist	3	1	33.33	Hastings	St. Johns	7	1	14.29
Fanning Springs	Levy	5	0	0.00	Havana	Gadsden	3	0	0.00
Fellsmere	Indian River	16	1	6.25	Haverhill	Palm Beach	10	0	0.00
Fernandina Beach	Nassau	91	13	14.29	Hawthorne	Alachua	34	1	2.94
Flagler Beach	Flagler	29	5	17.24	Hialeah	Miami-Dade	3393	181	5.33
Florida A&M University	Leon	69	1	1.45	Hialeah Gardens	Miami-Dade	172	12	6.98
Florida Atlantic University	Palm Beach	48	1	2.08	High Springs	Alachua	46	2	4.35
Florida City	Miami-Dade	270	14	5.19	Highland Beach	Palm Beach	2	1	50.00
Florida International Univ	Miami-Dade	2	0	0.00	Hilliard	Nassau	11	6	54.55
Florida State University	Leon	22	4	18.18	Hillsboro Beach	Broward	19	0	0.00
Fort Lauderdale	Broward	4093	350	8.55	Hobe Sound	Martin	57	13	22.81
Fort Meade	Polk	34	3	8.82	Holly Hill	Volusia	187	25	13.37
Fort Myers	Lee	1931	194	10.05	Hollywood	Broward	2600	182	7.00
Fort Myers Beach	Lee	41	6	14.63	Holmes Beach	Manatee	30	6	20.00

Alcohol-Related Crashes By City/Locality

2003 Florida Traffic Crash Statistics

Locality	County	Total Crashes	Alcohol-Related Crashes	Alcohol-Related Crashes as % of Total	Locality	County	Total Crashes	Alcohol-Related Crashes	Alcohol-Related Crashes as % of Total
Homestead	Miami-Dade	428	51	11.92	Lake Clark Shores	Palm Beach	2	1	50.00
Homosassa Springs	Citrus	17	0	0.00	Lake Hamilton	Polk	32	1	3.13
Howey-in-the-Hills	Lake	5	1	20.00	Lake Helen	Volusia	19	2	10.53
Hypoluxo	Palm Beach	12	2	16.67	Lake Holloway	Polk	4	0	0.00
Immokalee	Collier	238	47	19.75	Lake Magdalene	Hillsborough	17	0	0.00
Indialantic	Brevard	23	5	21.74	Lake Mary	Seminole	149	20	13.42
Indian Creek Village	Miami-Dade	8	0	0.00	Lake Park	Palm Beach	96	14	14.58
Indian Harbour Beach	Brevard	24	3	12.50	Lake Placid	Highlands	47	7	14.89
Indian River Shores	Indian River	10	1	10.00	Lake Wales	Polk	186	13	6.99
Indian Rocks Beach	Pinellas	54	8	14.81	Lake Worth	Palm Beach	882	121	13.72
Indian Shores	Pinellas	17	4	23.53	Lakeland	Polk	1204	127	10.55
Indiantown	Martin	53	19	35.85	Land O' Lakes	Pasco	18	2	11.11
Inglis	Levy	11	1	9.09	Lantana	Palm Beach	276	33	11.96
Interlachen	Putnam	18	2	11.11	Largo	Pinellas	902	134	14.86
Inverness	Citrus	7	1	14.29	Lauderdale by the Sea	Broward	88	8	9.09
Islamorada	Monroe	160	28	17.50	Lauderdale Lakes	Broward	444	21	4.73
Islandia	Miami-Dade	1	0	0.00	Lauderhill	Broward	637	18	2.83
Jacksonville	Duval	12463	994	7.98	Laurel Hill	Okaloosa	3	1	33.33
Jacksonville Beach	Duval	655	114	17.40	Lawtey	Bradford	9	0	0.00
Jacksonville University	Duval	3	1	33.33	Layton	Monroe	3	0	0.00
Jasper	Hamilton	19	2	10.53	Lazy Lake Village	Broward	2	0	0.00
Jay	Santa Rosa	3	0	0.00	Lealman	Pinellas	12	2	16.67
Jennings	Hamilton	1	0	0.00	Lee	Madison	1	0	0.00
Jensen Beach	Martin	126	30	23.81	Lee County Airport Police	Lee	14	0	0.00
Juno Beach	Palm Beach	21	3	14.29	Leesburg	Lake	303	32	10.56
Jupiter	Palm Beach	486	63	12.96	Lehigh Acres	Lee	65	13	20.00
Jupiter Inlet Colony	Palm Beach	1	0	0.00	Leisure City	Miami-Dade	1	0	0.00
Jupiter Island	Martin	10	1	10.00	Lighthouse Point	Broward	174	25	14.37
Kendall	Miami-Dade	243	6	2.47	Live Oak	Suwannee	89	15	16.85
Kennedy Space Center	Brevard	18	1	5.56	Longboat Key	Manatee	8	1	12.50
Kenneth City	Pinellas	62	4	6.45	Longboat Key	Sarasota	26	4	15.38
Key Biscayne	Miami-Dade	89	2	2.25	Longwood	Seminole	213	31	14.55
Key Colony Beach	Monroe	4	0	0.00	Lynn Haven	Bay	192	11	5.73
Key Largo	Monroe	214	30	14.02	Macclenny	Baker	55	7	12.73
Key West	Monroe	698	126	18.05	Madeira Beach	Pinellas	104	22	21.15
Keystone Heights	Clay	11	1	9.09	Madison	Madison	40	3	7.50
Kissimmee	Osceola	161	20	12.42	Maitland	Orange	225	23	10.22
La Belle	Hendry	24	2	8.33	Malabar	Brevard	20	5	25.00
La Crosse	Alachua	2	0	0.00	Malone	Jackson	1	1	100.00
Lady Lake	Lake	163	15	9.20	Manalapan	Palm Beach	10	2	20.00
Lake Alfred	Polk	16	3	18.75	Mandarin	Duval	47	1	2.13
Lake Buena Vista	Orange	71	8	11.27	Mangonia Park	Palm Beach	73	1	1.37
Lake Butler	Union	16	1	6.25	Marathon	Monroe	126	19	15.08
Lake Carroll	Hillsborough	2	1	50.00	Margate	Broward	609	42	6.90
Lake City	Columbia	188	29	15.43	Marianna	Jackson	108	7	6.48

Alcohol-Related Crashes By City/Locality

2003 Florida Traffic Crash Statistics

Locality	County	Total Crashes	Alcohol-Related Crashes		Locality	County	Total Crashes	Alcohol-Related Crashes	
			Related Crashes	as % of Total				Related Crashes	as % of Total
Mary Esther	Okaloosa	58	5	8.62	North Miami Beach	Miami-Dade	706	22	3.12
Mascotte	Lake	41	11	26.83	North Naples	Collier	278	51	18.35
Mayo	Lafayette	13	3	23.08	North Palm Beach	Palm Beach	143	13	9.09
Medley	Miami-Dade	140	8	5.71	North Port	Sarasota	181	16	8.84
Melbourne	Brevard	682	102	14.96	North Redington Beach	Pinellas	3	0	0.00
Melbourne Beach	Brevard	12	1	8.33	Norwood	Miami-Dade	5	1	20.00
Melbourne Village	Brevard	14	2	14.29	Oak Hill	Volusia	11	3	27.27
Melrose Park	Broward	1	0	0.00	Oakland	Orange	43	2	4.65
Merritt Island	Brevard	378	57	15.08	Oakland Park	Broward	1083	74	6.83
Mexico Beach	Bay	9	3	33.33	Ocala	Marion	1249	73	5.84
Miami	Miami-Dade	9715	391	4.02	Ocean Breeze Park	Martin	1	1	100.00
Miami Beach	Miami-Dade	2637	257	9.75	Ocean City	Okaloosa	14	3	21.43
Miami Lakes	Miami-Dade	420	16	3.81	Ocean Ridge	Palm Beach	18	1	5.56
Miami Shores	Miami-Dade	143	2	1.40	Ocean Ridge Park	Martin	1	1	100.00
Miami Springs	Miami-Dade	123	9	7.32	Ocoee	Orange	294	38	12.93
Miami TP	Miami-Dade	1	0	0.00	Okeechobee	Okeechobee	163	16	9.82
Miami-Dade Co Sch PD	Miami-Dade	78	0	0.00	Oldsmar	Pinellas	256	33	12.89
Micanopy	Alachua	7	2	28.57	Opa Locka	Miami-Dade	49	1	2.04
Miccosukee Indian Res	Miami-Dade	23	8	34.78	Orange City	Volusia	181	15	8.29
Middleburg	Clay	23	2	8.70	Orange Park	Clay	79	10	12.66
Midway	Gadsden	7	1	14.29	Orchid	Indian River	1	0	0.00
Milton	Santa Rosa	125	5	4.00	Orlando	Orange	5264	352	6.69
Mims	Brevard	61	10	16.39	Orlovista	Orange	2	0	0.00
Minneola	Lake	17	1	5.88	Ormond Beach	Volusia	453	79	17.44
Miramar	Broward	679	34	5.01	Ormond By The Sea	Volusia	6	3	50.00
Monticello	Jefferson	1	1	100.00	Otter Creek	Levy	2	0	0.00
Montverde	Lake	1	0	0.00	Oviedo	Seminole	125	12	9.60
Moore Haven	Glades	11	2	18.18	Pahokee	Palm Beach	51	7	13.73
Mount Dora	Lake	214	21	9.81	Palatka	Putnam	278	28	10.07
Mulberry	Polk	60	2	3.33	Palm Bay	Brevard	571	94	16.46
Munson Island	Monroe	1	0	0.00	Palm Beach	Palm Beach	90	6	6.67
Myrtle Grove	Escambia	20	4	20.00	Palm Beach Gardens	Palm Beach	587	52	8.86
Naples	Collier	309	30	9.71	Palm Beach Sch Board	Palm Beach	2	1	50.00
Naranja	Miami-Dade	6	0	0.00	Palm Beach Shores	Palm Beach	9	1	11.11
Neptune Beach	Duval	53	18	33.96	Palm City	Martin	69	10	14.49
New Port Richey	Pasco	386	57	14.77	Palm River/Clair Mel	Hillsborough	3	0	0.00
New Smyrna Beach	Volusia	331	39	11.78	Palm Springs	Palm Beach	42	3	7.14
Newberry	Alachua	42	4	9.52	Palmetto	Manatee	200	19	9.50
Niceville	Okaloosa	117	16	13.68	Palmetto Estates	Miami-Dade	4	0	0.00
Nokomis/Laurel	Sarasota	1	1	100.00	Panama City	Bay	926	123	13.28
North Andrews Garden	Broward	3	1	33.33	Panama City Beach	Bay	245	53	21.63
North Bay	Miami-Dade	2	0	0.00	Parker	Bay	31	5	16.13
North Bay Village	Miami-Dade	46	5	10.87	Parkland	Broward	82	10	12.20
North Fort Myers	Lee	72	15	20.83	Parrish	Manatee	1	0	0.00
North Lauderdale	Broward	228	20	8.77	Patrick AFB	Brevard	3	0	0.00

Alcohol-Related Crashes By City/Locality

2003 Florida Traffic Crash Statistics

Locality	County	Total Crashes	Alcohol-Related Crashes		Locality	County	Total Crashes	Alcohol-Related Crashes	
			Related Crashes	as % of Total				Related Crashes	as % of Total
Pembroke Park	Broward	174	12	6.90	Saint Pete/Clearwater AP	Pinellas	2	0	0.00
Pembroke Pines	Broward	1673	91	5.44	Saint Petersburg	Pinellas	4055	364	8.98
Pensacola	Escambia	729	114	15.64	Saint Petersburg Beach	Pinellas	158	34	21.52
Perrine	Miami-Dade	34	2	5.88	San Antonio	Pasco	10	1	10.00
Perry	Taylor	102	13	12.75	Sanford	Seminole	666	77	11.56
Pierson	Volusia	3	0	0.00	Sanibel	Lee	41	5	12.20
Pine Crest Village	Miami-Dade	44	1	2.27	Santa Fe Community Coll	Alachua	9	0	0.00
Pine Hills	Orange	15	0	0.00	Santa Rosa Beach	Walton	11	2	18.18
Pinellas Park	Pinellas	874	117	13.39	Sarasota	Sarasota	1253	121	9.66
Pinewood	Miami-Dade	5	0	0.00	Sarasota South	Sarasota	14	4	28.57
Plant City	Hillsborough	362	40	11.05	Sarasota Southeast	Sarasota	1	0	0.00
Plantation	Monroe	5	1	20.00	Sarasota-Manatee Airport	Sarasota	4	2	50.00
Plantation	Broward	1058	77	7.28	Satellite Beach	Brevard	73	10	13.70
Polk City	Polk	19	3	15.79	Sea Ranch Lakes	Broward	9	0	0.00
Pompano Beach	Broward	1844	123	6.67	Sebastian	Indian River	73	16	21.92
Pompano Beach Highlands	Broward	9	2	22.22	Sebring	Highlands	117	14	11.97
Ponce De Leon	Holmes	2	0	0.00	Seminole	Pinellas	353	44	12.46
Ponce Inlet	Volusia	17	2	11.76	Seminole Indian Res	Broward	71	7	9.86
Ponte Vedra	St. Johns	22	2	9.09	Seminole Park	Pinellas	9	0	0.00
Port Charlotte	Charlotte	554	50	9.03	Seville	Volusia	2	0	0.00
Port Orange	Volusia	320	53	16.56	Sewalis Point	Martin	20	4	20.00
Port Richey	Pasco	144	18	12.50	Shalimar	Okaloosa	25	1	4.00
Port Saint Joe	Gulf	31	2	6.45	Siesta Key	Sarasota	1	0	0.00
Port Saint Lucie	St. Lucie	587	87	14.82	Silver Springs Shore	Marion	4	0	0.00
Port Saint Lucie	Martin	2	0	0.00	Sky Lake	Orange	1	0	0.00
Port Salerno	Martin	18	6	33.33	Sneads	Jackson	9	0	0.00
Punta Gorda	Charlotte	114	15	13.16	Sopchoppy	Wakulla	4	0	0.00
Quincy	Gadsden	162	9	5.56	South Bay	Palm Beach	41	3	7.32
Raiford	Union	1	0	0.00	South Daytona	Volusia	137	20	14.60
Redington Beach	Pinellas	10	2	20.00	South Miami	Miami-Dade	31	1	3.23
Redington Shores	Pinellas	19	7	36.84	South Miami Heights	Miami-Dade	5	0	0.00
Richmond Heights	Miami-Dade	342	15	4.39	South Pasedena	Pinellas	65	8	12.31
Ridgewood Heights	Sarasota	1	0	0.00	South Patrick Shores	Brevard	5	1	20.00
Riverland	Broward	8	0	0.00	Springfield	Bay	30	8	26.67
Riviera Beach	Palm Beach	553	51	9.22	Starke	Bradford	141	11	7.80
Rockledge	Brevard	137	18	13.14	Steinhatchee	Taylor	2	1	50.00
Royal Palm Beach	Palm Beach	364	29	7.97	Stuart	Martin	495	48	9.70
Ruskin	Hillsborough	12	2	16.67	Sunny isles	Miami-Dade	181	19	10.50
Safety Harbor	Pinellas	193	26	13.47	Sunrise	Broward	755	45	5.96
Saint Augustine	St. Johns	294	45	15.31	Surfside	Miami-Dade	65	2	3.08
Saint Augustine Beach	St. Johns	38	7	18.42	Sweetwater	Miami-Dade	81	0	0.00
Saint Cloud	Osceola	286	32	11.19	Tallahassee	Leon	4373	288	6.59
Saint Leo	Pasco	15	1	6.67	Tamarac	Broward	662	42	6.34
Saint Lucie Village	St. Lucie	1	0	0.00	Tampa	Hillsborough	9531	747	7.84
Saint Marks	Wakulla	3	2	66.67	Tampa International Airport	Hillsborough	75	12	16.00

Alcohol-Related Crashes By City/Locality

2003 Florida Traffic Crash Statistics

Locality	County	Total Crashes	Alcohol-Related Crashes		Locality	County	Total Crashes	Alcohol-Related Crashes	
			Related Crashes	as % of Total				Related Crashes	as % of Total
Tarpon Springs	Pinellas	384	42	10.94	Wildwood	Sumter	30	0	0.00
Tavares	Lake	136	6	4.41	Williston	Levy	32	2	6.25
Tavernier	Monroe	55	11	20.00	Wilton Manors	Broward	189	23	12.17
Temple Terrace	Hillsborough	222	26	11.71	Windermere	Orange	25	1	4.00
Tequesta Village	Palm Beach	17	0	0.00	Winter Garden	Orange	163	17	10.43
Tice	Lee	2	1	50.00	Winter Haven	Polk	374	41	10.96
Titusville	Brevard	380	48	12.63	Winter Park	Orange	322	37	11.49
Treasure Island	Pinellas	86	28	32.56	Winter Springs	Seminole	98	11	11.22
Trenton	Gilchrist	20	3	15.00	Worthing Springs	Union	2	0	0.00
Uleta	Miami-Dade	126	3	2.38	Yankeetown	Levy	2	1	50.00
Umatilla	Lake	8	0	0.00	Yulee	Nassau	9	1	11.11
Union Park	Orange	1	0	0.00	Zephyrhills	Pasco	157	10	6.37
University of Central FL	Orange	33	9	27.27	Zolfo Springs	Hardee	16	0	0.00
University of Florida	Alachua	54	4	7.41					
University of Miami	Miami-Dade	18	0	0.00					
University of North Florida	Duval	19	0	0.00					
University of South Florida	Hillsborough	107	0	0.00					
University of West Florida	Escambia	6	0	0.00					
Valparaiso	Okaloosa	33	4	12.12					
Venice	Sarasota	173	23	13.29					
Venice South	Sarasota	7	0	0.00					
Vemon	Washington	4	2	50.00					
Vero Beach	Indian River	352	33	9.38					
Virginia Gardens	Miami-Dade	2	1	50.00					
Wahneta	Polk	4	1	25.00					
Wakulla	Wakulla	2	1	50.00					
Waldo	Alachua	6	0	0.00					
Warrington	Escambia	22	5	22.73					
Wauchula	Hardee	80	5	6.25					
Weekiwachee	Hernando	3	1	33.33					
Welaka	Putnam	3	1	33.33					
Wellington	Palm Beach	224	19	8.48					
West Bradenton	Manatee	621	45	7.25					
West Eau Gallie	Brevard	1	0	0.00					
West Gate	Palm Beach	1	0	0.00					
West Hollywood	Broward	6	0	0.00					
West Melbourne	Brevard	88	5	5.68					
West Miami	Miami-Dade	72	6	8.33					
West Palm Beach	Palm Beach	1813	134	7.39					
West Pensacola	Escambia	50	4	8.00					
West Winter Haven	Polk	1	1	100.00					
Weston	Broward	260	20	7.69					
Westville	Holmes	2	0	0.00					
Wewahitchka	Gulf	13	3	23.08					
White Springs	Hamilton	5	1	20.00					

APPENDIX
Florida Traffic Crash Statistics
FORMS

FLORIDA TRAFFIC CRASH REPORT

LONG FORM

MAIL TO: DEPT. OF HIGHWAY SAFETY & MOTOR VEHICLES, TRAFFIC CRASH RECORDS, NEIL KIRKMAN BUILDING, TALLAHASSEE, FL 32399-0537

DO NOT WRITE IN THIS SPACE

Time & Location	DATE OF CRASH	TIME OF CRASH	TIME OFFICER NOTIFIED	TIME OFFICER ARRIVED	INVEST AGENCY REPORT NUMBER	HSMV CRASH REPORT NUMBER
	COUNTY / CITY CODE	FEET or MILE(S)	N S E W	CITY OR TOWN	(Check if in: City or Town) COUNTY	
	AT NODE NO. or FEET or MILE(S)	FROM NODE NO.	NEXT NODE NO.	NO. OF LANES	1. DIVIDED 2. UNDIVIDED	
	ON STREET, ROAD OR HIGHWAY		AT THE INTERSECTION OF (street, road or highway) or FEET MILE(S) N S E W FROM INTERSECTION OF (street, road or highway)			

Vehicle Information	DRIVER ACTION	1. Phantom 2. Hit & Run 3. N/A	YEAR	MAKE	TYPE	USE	VEH. LICENSE NUMBER	STATE	VEHICLE IDENTIFICATION NUMBER	18 Undercarriage 19. Overturn 20. Windshield 21. Trailer					
	TRAILER OR TOWED VEHICLE INFORMATION		TRAILER TYPE							SHOW FIRST POINT OF VEHICLE DAMAGE AND CIRCLE DAMAGED AREA(S)					
	VEHICLE TRAVELLING	N S E W	ON	AT	Est. MPH	Posted Speed	EST. VEHICLE DAMAGE	1. Disabling 2. Functional 3. No Damage	EST. TRAILER DAMAGE						
	MOTOR VEHICLE INSURANCE COMPANY (LIABILITY OR PIP)		POLICY NUMBER		VEHICLE REMOVED BY:		1. Tow Rotation List 2. Tow Owner's Request 3. Driver 4. Other								
	NAME OF VEHICLE OWNER (Check Box If Same As Driver)	<input type="checkbox"/>	CURRENT ADDRESS (Number and Street)		CITY AND STATE		ZIP CODE								
	NAME OF OWNER (Trailer or Towed Vehicle)		CURRENT ADDRESS (Number and Street)		CITY AND STATE		ZIP CODE								
	NAME OF MOTOR CARRIER (Commercial Vehicle Only)		CURRENT ADDRESS (Number and Street)		CITY, STATE AND ZIP CODE		US DOT or ICC MC IDENTIFICATION NUMBERS								
	NAME OF DRIVER (Take From Driver License) / PEDESTRIAN		CURRENT ADDRESS (Number and Street)		CITY, STATE & ZIP CODE		DATE OF BIRTH								
	DRIVER LICENSE NUMBER		STATE	DL TYPE	REQ. END.	ALC/DRUG TEST TYPE	RESULTS	ALC/DRUG	PHYS. DEF.	RES.	RACE	SEX	INJ.	S. EQUIP.	EJECT.
	HAZARDOUS MATERIALS BEING TRANSPORTED	PLACARDED	IF YES, INDICATE NAME OR 4 DIGIT NUMBER FROM DIAMOND OR BOX ON PLACARD, AND 1 DIGIT NUMBER FROM BOTTOM OF DIAMOND.		WAS HAZARDOUS MATERIAL SPILLED?	RECOMMEND DRIVER RE-EXAM, IF YES EXPLAIN IN NARRATIVE	DRIVER'S PHONE NO.								

Vehicle Information	DRIVER ACTION	1. Phantom 2. Hit & Run 3. N/A	YEAR	MAKE	TYPE	USE	VEH. LICENSE NUMBER	STATE	VEHICLE IDENTIFICATION NUMBER	18 Undercarriage 19. Overturn 20. Windshield 21. Trailer					
	TRAILER OR TOWED VEHICLE INFORMATION		TRAILER TYPE							SHOW FIRST POINT OF VEHICLE DAMAGE AND CIRCLE DAMAGED AREA(S)					
	VEHICLE TRAVELLING	N S E W	ON	AT	Est. MPH	Posted Speed	EST. VEHICLE DAMAGE	1. Disabling 2. Functional 3. No Damage	EST. TRAILER DAMAGE						
	MOTOR VEHICLE INSURANCE COMPANY (LIABILITY OR PIP)		POLICY NUMBER		VEHICLE REMOVED BY:		1. Tow Rotation List 2. Tow Owner's Request 3. Driver 4. Other								
	NAME OF VEHICLE OWNER (Check Box If Same As Driver)	<input type="checkbox"/>	CURRENT ADDRESS (Number and Street)		CITY AND STATE		ZIP CODE								
	NAME OF OWNER (Trailer or Towed Vehicle)		CURRENT ADDRESS (Number and Street)		CITY AND STATE		ZIP CODE								
	NAME OF MOTOR CARRIER (Commercial Vehicle Only)		CURRENT ADDRESS (Number and Street)		CITY, STATE AND ZIP CODE		US DOT or ICC MC IDENTIFICATION NUMBERS								
	NAME OF DRIVER (Take From Driver License) / PEDESTRIAN		CURRENT ADDRESS (Number and Street)		CITY, STATE & ZIP CODE		DATE OF BIRTH								
	DRIVER LICENSE NUMBER		STATE	DL TYPE	REQ. END.	ALC/DRUG TEST TYPE	RESULTS	ALC/DRUG	PHYS. DEF.	RES.	RACE	SEX	INJ.	S. EQUIP.	EJECT.
	WAS HAZARDOUS MATERIAL BEING TRANSPORTED	PLACARDED	IF YES, INDICATE NAME OR FOUR DIGIT NUMBER FROM DIAMOND OR BOX ON PLACARD, AND 1 DIGIT NUMBER FROM BOTTOM OF DIAMOND.		WAS HAZARDOUS MATERIAL SPILLED?	RECOMMEND DRIVER RE-EXAM, IF YES EXPLAIN IN NARRATIVE	DRIVER'S PHONE NO.								

Code Information	VEHICLE TYPE	VEHICLE USE	TRAILER TYPE	RESIDENCE (Driver / Ped.)	PHYSICAL DEFECTS	ALCOHOL / DRUG USE	LOCATION IN VEHICLE
	01 Automobile	01 Private Transportation	01 Single Sem. Trailer	1 County of Crash	1 No Defects Known	1 Not Drinking or Using Drugs	1 Front Left
	02 Van	02 Commercial Passengers	02 Tandem Semi Trailer	2 Elsewhere in State	2 Eyesight Defect	2 Alcohol - Under Influence	2 Front Center
	03 Light Truck / P.U. - 2 or 4 rear tires	03 Commercial Cargo	03 Tank Trailer	3 Non-Resident Out of State	3 Fatigue / Asleep	3 Drugs - Under Influence	3 Front Right
	04 Medium Truck - 4 rear tires	04 Public Transportation	04 Saddle Mount / Flatbed	4 Foreign 5 Unknown	4 Hearing Defect	4 Alcohol & Drugs - Under Influence	4 Rear Left
	05 Heavy Truck - 2 or more rear axles	05 Public School Bus	05 Boat Trailer		5 Illness	5 Had Been Drinking	5 Rear Right
	05 Truck Tractor (Cab-Booth)	06 Private School Bus	06 Utility Trailer	DL TYPE	6 Seizure, Epilepsy Blackout	6 Pending ALC/DRUG Test Results	6 Rear Right
	07 Motor Home (RV)	07 Ambulance	07 House Trailer	1 A 2 B 3 C	7 Other Physical Defect		7 In Body Of Truck
	08 Bus (driver + seats for 9-15)	08 Law Enforcement	08 Pole Trailer	1 White 2 Black	INJURY SEVERITY	SAFETY EQUIPMENT IN USE	8 Bus Passenger
	09 Bus (driver + seats for over 15)	09 Fire / Rescue	09 Towed Vehicle	3 Hispanic 4 Other	1 None	1 Not in use	9 Other
10 Bicycle	10 Military	10 Auto Transport	RACE	2 Possible	2 Seat Belt / Shoulder Harness		
11 Motorcycle	11 Other Government	77 Other	1 Male 2 Female	3 Non-Incapacitating	3 Child Restraint		
12 Moped	12 Dump		REQUIRED ENDORSEMENTS	4 Incapacitating	4 Air Bag - Deployed		
13 All Terrain Vehicle	13 Concrete Mixer		1 Yes 2 No 3 No Endorsement Required	5 Fatal (Within 30 Days)	5 Air Bag - Not Deployed		
14 Train	14 Garbage or Refuse			6 Non-Traffic Fatality	6 Safety Helmet	EJECTED	
15 Low Speed Vehicle	15 Cargo Van				7 Eye Protection	1 No 2 Yes 3 Partial	
77 Other	77 Other						

S e c t i o n 3	DRIVER ACTION 1. Phantom 2. Hit & Run 3. N/A	YEAR	MAKE	TYPE	JSE	VEH. LICENSE NUMBER	STATE	VEHICLE IDENTIFICATION NUMBER				18. Undercarriage 19. Overturn 20. Windshield 21. Trailer		
	TRAILER OR TOWED VEHICLE INFORMATION			TRAILER TYPE					15. Unlabeled 16. Unlabeled 17. Unlabeled	SHOW FIRST POINT OF VEHICLE DAMAGE AND CIRCLE DAMAGED AREA(S)				
Vehicle	VEHICLE TRAVELLING N S E W	ON	AT	Est. MPH	Posted Speed	EST. VEHICLE DAMAGE	1. Disabling 2. Functional 3. No Damage	EST. TRAILER DAMAGE	DAMAGE					
Pedestrian	MOTOR VEHICLE INSURANCE COMPANY (LIABILITY OR PIP)		POLICY NUMBER		VEHICLE REMOVED BY:		1. Tow Rotation List 2. Tow Owner's Request		3. Driver 4. Other					
	NAME OF VEHICLE OWNER (Check Box If Same As Driver)		CURRENT ADDRESS (Number and Street)		CITY AND STATE		ZIP CODE							
	NAME OF OWNER (Trailer or Towed Vehicle)		CURRENT ADDRESS (Number and Street)		CITY AND STATE		ZIP CODE							
	NAME OF MOTOR CARRIER (Commercial Vehicle Only)		CURRENT ADDRESS (Number and Street)		CITY, STATE AND ZIP CODE		US DOT or ICC MC IDENTIFICATION NUMBERS							
NAME OF DRIVER (Take From Driver License) / PEDESTRIAN		CURRENT ADDRESS (Number and Street)		CITY, STATE & ZIP CODE		DATE OF BIRTH								
DRIVER LICENSE NUMBER		STATE	DL TYPE	REQ. END.	ALCOHOL/DRUG TEST TYPE 1 Blood 3 Urine 5 None 2 Breath 4 Refused	RESULTS	ALCOHOL/DRUG	PHYS. DEF.	RES.	RACE	SEX	INJ.	S. EQUIP.	EJECT.
HAZARDOUS MATERIALS BEING TRANSPORTED		PLACARDED	IF YES, INDICATE NAME OR 4 DIGIT NUMBER FROM DIAMOND OR BOX ON PLACARD, AND 1 DIGIT NUMBER FROM BOTTOM OF DIAMOND		WAS HAZARDOUS MATERIAL SPILLED?		RECOMMEND DRIVER RE-EXAM. IF YES EXPLAIN IN NARRATIVE		DRIVER'S PHONE NO.					

# 1	PROPERTY DAMAGED - OTHER THAN VEHICLES	EST. AMOUNT	OWNER'S NAME	ADDRESS	CITY	STATE	ZIP
# 2	PROPERTY DAMAGED - OTHER THAN VEHICLES	EST. AMOUNT	OWNER'S NAME	ADDRESS	CITY	STATE	ZIP

CONTRIBUTING CAUSES - DRIVER / PEDESTRIAN			VEHICLE DEFECT			VEHICLE MOVEMENT			VEHICLE SPECIAL FUNCTIONS															
01 No Improper Driving / Action	02 Careless Driving (Explain in Narrative)	03 Failed To Yield Right - of - Way	04 Improper Backing	05 Improper Lane Change	06 Improper Turn	07 Alcohol - Under Influence	08 Drugs - Under Influence	09 Alcohol & Drugs - Under Influence	10 Followed Too Closely	11 Disregarded Traffic Signal	12 Exceeded Safe Speed Limit	13 Disregarded Stop Sign	14 Failed To Maintain Equip. / Vehicle	15 Improper Passing	16 Drove Left of Center	17 Exceeded Stated Speed Limit	18 Obstructing Traffic	19 Improper Load	20 Disregarded Other Traffic Control	21 Driving Wrong Side / Way	22 Fleeing Police	23 Vehicle Modified	24 Driver Distraction (Explain In Narrative)	77 All Other (Explain In Narrative)
POINT OF COLLISION			WORK AREA			PEDESTRIAN ACTION			LOCATION TYPE															
01 On Road			01 None			01 Crossing Not at Intersection			1 Primary Business															
02 Not On Road			02 Nearby			02 Crossing at Mid-block Crosswalk In Road			2 Primary Residential															
03 Shoulder			03 Entered			03 Crossing at Intersection			3 Open Country															
04 Median						04 Walking Along Road With Traffic																		
05 Turn Lane						05 Walking Along Road Against Traffic																		
						06 Working on Vehicle In Road																		
						07 Working In Road																		
						08 Stopping / Stalled																		
						09 Improperly Parked																		
						10 Making U-Turn																		
						11 Passing																		
						12 Driveless or Runaway Vehicle																		
						77 All Other (Explain In Narrative)																		
									SOURCE OF CARRIER INFORMATION															
									1 Not Applicable															
									2 Shipping Papers															
									3 Vehicle Side															
									4 Driver															
									5 Other															

FIRST / SUBSEQUENT HARMFUL EVENT(S)			ROAD SYSTEM IDENTIFIER			LIGHTING CONDITION																																																
01 Collision With MV in Transport (Rear End)	02 Collision With MV in Transport (Head On)	03 Collision With MV in Transport (Angle)	04 Collision With MV in Transport (Left Turn)	05 Collision With MV in Transport (Right Turn)	06 Collision With MV in Transport (Sideswipe)	07 Collision With MV in Transport (Backed Into)	08 Collision With Parked Car	09 Collision With MV on Roadway	10 Collision With Pedestrian	11 Collision With Bicycle	12 Collision With Bicycle (Bike Lane)	13 Collision With Moped	14 Collision With Train	15 Collision With Animal	16 MV Hit Sign / Sign Post	17 MV Hit Utility Pole / Light Pole	18 MV Hit Guardrail	19 MV Hit Fence	20 MV Hit Concrete Barrier Wall	21 MV Hit Bridge/Pier/Abutment/Rail	22 MV Hit Tree/Shrubbery	23 Collision With Construction Barricade Sign	24 Collision With Traffic Gate	25 Collision With Crash Attenuators	26 Collision With Fixed Object Above Road	27 MV Hit Other Fixed Object	28 Collision With Movable Object On Road	29 MV Ran into Ditch/Culvert	30 Ran Off Road Into Water	31 Overturned	32 Occupant Fell From Vehicle	33 Tractor/Trailer Jackknifed	34 Fire	35 Explosion	36 Downhill Runaway	37 Cargo Loss or Shift	38 Separation of Units	39 Median Crossover	77 All Other (Explain In Narrative)	01 Interstate	02 U.S.	03 State	04 County	05 Local	06 Turnpike / Toll	07 Forest Road	08 Private Roadway	77 All Other (Explain In Narrative)	01 Daylight	02 Dusk	03 Dawn	04 Dark (Street Light)	05 Dark (No Street Light)	88 Unknown
ROAD CONDITIONS AT TIME OF CRASH			VISION OBSTRUCTED			TRAFFIC CONTROL			SITE LOCATION			TRAFFICWAY CHARACTER																																										
01 No Defects	02 Obstruction With Warning	03 Obstruction Without Warning	04 Road Under Repair / Construction	05 Loose Surface Materials	06 Shoulders - Soft / Low / Hgn	07 Holes / Ruts / Unsafe Paved Edge	08 Standing Water	09 Worn / Polished Road Surface	77 All Other (Explain In Narrative)	01 Vision Not Obscured	02 Inclement Weather	03 Parked / Stopped Vehicle	04 Trees / Crops / Bushes	05 Load On Vehicle	06 Building / Fixed Object	07 Signs / Billboards	08 Fog	09 Smoke	77 All Other (Explain In Narrative)	10 Glare	01 No Control	02 Special Speed Zone	03 Speed Control Sign	04 School Zone	05 Traffic Signal	06 Stop Sign	07 Yield Sign	08 Flashing Light	09 Railroad Signal	10 Officer / Guard / Flagperson	11 Posted No U-Turn	12 No Passing Zone	77 All Other (Explain In Narrative)	01 Not At Intersection / RR X-ing / Bridge	02 At Intersection	03 Influenced By Intersection	04 Driveway Access	05 Railroad	06 Bridge	07 Entrance Ramp	08 Exit Ramp	09 Parking Lot - Public	10 Parking Lot - Private	11 Private Property	12 Toll Booth	13 Public Bus Stop Zone	77 All Other (Explain In Narrative)	01 Straight - Level	02 Straight - Upgrade / Downgrade	03 Curve - Level	04 Curve - Upgrade / Downgrade	05 Dirt	77 All Other (Explain In Narrative)	
ROAD SURFACE CONDITION			WEATHER			ROAD SURFACE TYPE			TYPE SHOULDER																																													
01 Dry			01 Clear			01 Slag/Gravel/Stone			01 Paved																																													
02 Wet			02 Cloudy			02 Blacktop			02 Unpaved																																													
03 Slippery			03 Rain			03 Brick/Block			03 Curb																																													
04 Icy			04 Fog			04 Concrete																																																
77 All Other (Explain In Narrative)			77 All Other (Explain In Narrative)			77 All Other (Explain In Narrative)			77 All Other (Explain In Narrative)																																													

Violator(s)	SECTION #	NAME OF VIOLATOR	FL STATUTE NUMBER	CHARGE	CITATION NUMBER
	SECTION #	NAME OF VIOLATOR	FL STATUTE NUMBER	CHARGE	CITATION NUMBER
	SECTION #	NAME OF VIOLATOR	FL STATUTE NUMBER	CHARGE	CITATION NUMBER
	SECTION #	NAME OF VIOLATOR	FL STATUTE NUMBER	CHARGE	CITATION NUMBER

FLORIDA TRAFFIC CRASH REPORT NARRATIVE/DIAGRAM

MAIL TO: DEPARTMENT OF HIGHWAY SAFETY & MOTOR VEHICLES, TRAFFIC CRASH
RECORDS SECTION, NEIL KIRKMAN BUILDING, TALLAHASSEE, FL 32399-0500

DO NOT WRITE IN THIS SPACE

TIME EMS NOTIFIED (FATALITIES ONLY) <input type="checkbox"/> AM <input type="checkbox"/> PM	TIME EMS ARRIVED (FATALITIES ONLY) <input type="checkbox"/> AM <input type="checkbox"/> PM	DATE OF CRASH	COUNTY / CITY CODE	INVEST. AGENCY REPORT NUMBER	HSMV CRASH REPORT NUMBER
--	---	---------------	--------------------	------------------------------	--------------------------

(NARRATIVE)

SEC#	PASS#	PASSENGER'S NAME	CURRENT ADDRESS	CITY & STATE	ZIP CODE	DATE OF BIRTH	RACE	SEX	LOC	INJ	S. EQUIP.	EJECT.

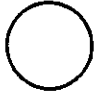
Violator(s)	SECTION #	NAME OF VIOLATOR	FL STATUTE NUMBER	CHARGE	CITATION NUMBER
	SECTION #	NAME OF VIOLATOR	FL STATUTE NUMBER	CHARGE	CITATION NUMBER

WITNESS NAME (1)	CURRENT ADDRESS	CITY & STATE	ZIP CODE	WITNESS NAME (2)	CURRENT ADDRESS	CITY & STATE	ZIP CODE
------------------	-----------------	--------------	----------	------------------	-----------------	--------------	----------

FIRST AID GIVEN BY - NAME	1. Physician or Nurse 2. Paramedic or EMT 3. Police Officer 4. Certified 1st Aider 5. Other	INJURED TAKEN TO:
---------------------------	--	-------------------

WAS INVESTIGATION MADE AT SCENE? 1. YES <input type="checkbox"/> 2. NO <input type="checkbox"/>	IF NO, THEN WHERE? _____	IS INVESTIGATION COMPLETE? 1. YES <input type="checkbox"/> 2. NO <input type="checkbox"/>	IF NO, THEN WHY? _____
INVESTIGATOR - RANK & SIGNATURE		ID/BADGE NUMBER	DEPARTMENT
		PHOTOS TAKEN 1. YES <input type="checkbox"/> 2. NO <input type="checkbox"/>	
		IF YES, BY WHOM? 1. INVESTIGATING AGENCY <input type="checkbox"/> 2. OTHER <input type="checkbox"/>	
		FHP <input type="checkbox"/> SO <input type="checkbox"/> PD <input type="checkbox"/> OTHER <input type="checkbox"/>	

DIAGRAM



INDICATE NORTH
WITH ARROW

FLORIDA TRAFFIC CRASH REPORT

UPDATE CONTINUATION

MAIL TO: DEPT. OF HIGHWAY SAFETY & MOTOR VEHICLES, TRAFFIC CRASH RECORDS, NEIL KIRKMAN BUILDING, TALLAHASSEE, FL 32399-0500

DO NOT WRITE IN THIS SPACE

		DATE OF CRASH		COUNTY / CITY CODE		INVEST. AGENCY REPORT NUMBER		HSMV CRASH REPORT NUMBER	
--	--	---------------	--	--------------------	--	------------------------------	--	--------------------------	--

Section Vehicle	DRIVER ACTION 1. Phantom <input type="checkbox"/> 2. Hit & Run <input type="checkbox"/> 3. N/A <input type="checkbox"/>	YEAR	MAKE	TYPE	USE	VEH. LICENSE NUMBER	STATE	VEHICLE IDENTIFICATION NUMBER		<table border="1" style="font-size: 8px;"> <tr><td>2</td><td>3</td><td>4</td><td>5</td><td>6</td><td>7</td></tr> <tr><td>1</td><td>15</td><td>16</td><td>17</td><td>8</td><td></td></tr> <tr><td>14</td><td>13</td><td>12</td><td>11</td><td>10</td><td>9</td></tr> </table>	2	3	4	5	6	7	1	15	16	17	8		14	13	12	11	10	9	18. Undercarriage 19. Overturn 20. Windshield 21. Trailer
	2	3	4	5	6	7																							
	1	15	16	17	8																								
	14	13	12	11	10	9																							
	TRAILER OR TOWED VEHICLE INFORMATION		TRAILER TYPE						SHOW FIRST POINT OF VEHICLE DAMAGE AND CIRCLE DAMAGED AREA(S)																				
	VEHICLE TRAVELLING N <input type="checkbox"/> S <input type="checkbox"/> E <input type="checkbox"/> W <input type="checkbox"/>		ON	AT	Est. MPH	Posted Speed	EST. VEHICLE DAMAGE	1. Disabling <input type="checkbox"/> 2. Functional <input type="checkbox"/> 3. No Damage <input type="checkbox"/>	EST. TRAILER DAMAGE	DAMAGE AND CIRCLE DAMAGED AREA(S)																			
	MOTOR VEHICLE INSURANCE COMPANY (LIABILITY OR PIP)		POLICY NUMBER		VEHICLE REMOVED BY:		1. Tow Rotation List <input type="checkbox"/> 2. Tow Owner's Request <input type="checkbox"/>		3. Driver <input type="checkbox"/> 4. Other <input type="checkbox"/>																				
	NAME OF VEHICLE OWNER (Check Box If Same As Driver) <input type="checkbox"/>		CURRENT ADDRESS (Number and Street)		CITY AND STATE		ZIP CODE																						
	NAME OF OWNER (Trailer or Towed Vehicle)		CURRENT ADDRESS (Number and Street)		CITY AND STATE		ZIP CODE																						
	NAME OF MOTOR CARRIER (Commercial Vehicle Only)		CURRENT ADDRESS (Number and Street)		CITY, STATE AND ZIP CODE		US DOT or ICC MC IDENTIFICATION NUMBERS																						
NAME OF DRIVER (Take From Driver License) / PEDESTRIAN		CURRENT ADDRESS (Number and Street)		CITY, STATE & ZIP CODE		DATE OF BIRTH																							
DRIVER LICENSE NUMBER		STATE	DL TYPE	REQ. END.	ALC/DRUG TEST TYPE 1. Blood 3. Urine 5. None 2. Breath 4. Refused	RESULTS	ALC/DRUG	PHYS. DEF.	RES.	RACE	SEX	INJ.	S. EQUIP.	EJECT.															
HAZARDOUS MATERIALS BEING TRANSPORTED	PLACARDED	IF YES INDICATE NAME OR 4 DIGIT NUMBER FROM DIAMOND OR BOX ON PLACARD, AND 1 DIGIT NUMBER FROM BOTTOM OF DIAMOND		WAS HAZARDOUS MATERIAL SPILLED?	RECOMMEND DRIVER RE-EXAM IF YES EXPLAIN IN NARRATIVE	DRIVER'S PHONE NO.																							

Section Vehicle	DRIVER ACTION 1. Phantom <input type="checkbox"/> 2. Hit & Run <input type="checkbox"/> 3. N/A <input type="checkbox"/>	YEAR	MAKE	TYPE	USE	VEH. LICENSE NUMBER	STATE	VEHICLE IDENTIFICATION NUMBER		<table border="1" style="font-size: 8px;"> <tr><td>2</td><td>3</td><td>4</td><td>5</td><td>6</td><td>7</td></tr> <tr><td>1</td><td>15</td><td>16</td><td>17</td><td>8</td><td></td></tr> <tr><td>14</td><td>13</td><td>12</td><td>11</td><td>10</td><td>9</td></tr> </table>	2	3	4	5	6	7	1	15	16	17	8		14	13	12	11	10	9	18. Undercarriage 19. Overturn 20. Windshield 21. Trailer
	2	3	4	5	6	7																							
	1	15	16	17	8																								
	14	13	12	11	10	9																							
	TRAILER OR TOWED VEHICLE INFORMATION		TRAILER TYPE						SHOW FIRST POINT OF VEHICLE DAMAGE AND CIRCLE DAMAGED AREA(S)																				
	VEHICLE TRAVELLING N <input type="checkbox"/> S <input type="checkbox"/> E <input type="checkbox"/> W <input type="checkbox"/>		ON	AT	Est. MPH	Posted Speed	EST. VEHICLE DAMAGE	1. Disabling <input type="checkbox"/> 2. Functional <input type="checkbox"/> 3. No Damage <input type="checkbox"/>	EST. TRAILER DAMAGE	DAMAGE AND CIRCLE DAMAGED AREA(S)																			
	MOTOR VEHICLE INSURANCE COMPANY (LIABILITY OR PIP)		POLICY NUMBER		VEHICLE REMOVED BY:		1. Tow Rotation List <input type="checkbox"/> 2. Tow Owner's Request <input type="checkbox"/>		3. Driver <input type="checkbox"/> 4. Other <input type="checkbox"/>																				
	NAME OF VEHICLE OWNER (Check Box If Same As Driver) <input type="checkbox"/>		CURRENT ADDRESS (Number and Street)		CITY AND STATE		ZIP CODE																						
	NAME OF OWNER (Trailer or Towed Vehicle)		CURRENT ADDRESS (Number and Street)		CITY AND STATE		ZIP CODE																						
	NAME OF MOTOR CARRIER (Commercial Vehicle Only)		CURRENT ADDRESS (Number and Street)		CITY, STATE AND ZIP CODE		US DOT or ICC MC IDENTIFICATION NUMBERS																						
NAME OF DRIVER (Take From Driver License) / PEDESTRIAN		CURRENT ADDRESS (Number and Street)		CITY, STATE & ZIP CODE		DATE OF BIRTH																							
DRIVER LICENSE NUMBER		STATE	DL TYPE	REQ. END.	ALC/DRUG TEST TYPE 1. Blood 3. Urine 5. None 2. Breath 4. Refused	RESULTS	ALC/DRUG	PHYS. DEF.	RES.	RACE	SEX	INJ.	S. EQUIP.	EJECT.															
HAZARDOUS MATERIALS BEING TRANSPORTED	PLACARDED	IF YES INDICATE NAME OR 4 DIGIT NUMBER FROM DIAMOND OR BOX ON PLACARD, AND 1 DIGIT NUMBER FROM BOTTOM OF DIAMOND		WAS HAZARDOUS MATERIAL SPILLED?	RECOMMEND DRIVER RE-EXAM IF YES EXPLAIN IN NARRATIVE	DRIVER'S PHONE NO.																							

PROPERTY DAMAGED - OTHER THAN VEHICLES	EST. AMOUNT	OWNER'S NAME	ADDRESS	CITY	STATE	ZIP
	\$					
PROPERTY DAMAGED - OTHER THAN VEHICLES	EST. AMOUNT	OWNER'S NAME	ADDRESS	CITY	STATE	ZIP
	\$					
PROPERTY DAMAGED - OTHER THAN VEHICLES	EST. AMOUNT	OWNER'S NAME	ADDRESS	CITY	STATE	ZIP
	\$					
PROPERTY DAMAGED - OTHER THAN VEHICLES	EST. AMOUNT	OWNER'S NAME	ADDRESS	CITY	STATE	ZIP
	\$					

WITNESS NAME (1)	CURRENT ADDRESS	CITY & STATE	ZIP CODE	WITNESS NAME (2)	CURRENT ADDRESS	CITY & STATE	ZIP CODE
------------------	-----------------	--------------	----------	------------------	-----------------	--------------	----------

WAS INVESTIGATION MADE AT SCENE? 1. YES <input type="checkbox"/> 2. NO <input type="checkbox"/>	IF NO. THEN WHERE?	IS INVESTIGATION COMPLETE? 1. YES <input type="checkbox"/> 2. NO <input type="checkbox"/>	IF NO. THEN WHY?	DATE OF REPORT	PHOTOS TAKEN 1. YES <input type="checkbox"/> 2. NO <input type="checkbox"/>	IF YES, BY WHOM? 1. INVESTIGATING AGENCY <input type="checkbox"/> 2. OTHER <input type="checkbox"/>
---	--------------------	---	------------------	----------------	---	---

INVESTIGATOR - RANK & SIGNATURE	ID/BADGE NUMBER	DEPARTMENT	FHP <input type="checkbox"/> SO <input type="checkbox"/> PD <input type="checkbox"/> OTHER <input type="checkbox"/>
---------------------------------	-----------------	------------	---

CONTRIBUTING CAUSES - DRIVER / PEDESTRIAN		VEHICLE DEFECT		VEHICLE MOVEMENT		VEHICLE SPECIAL FUNCTIONS	
01 No Improper Driving / Action	<input type="checkbox"/>	01 No Defects	<input type="checkbox"/>	01 Straight Ahead	<input type="checkbox"/>	1 None	<input type="checkbox"/>
02 Careless Driving (Explain In Narrative)	<input type="checkbox"/>	02 Def. Brakes	<input type="checkbox"/>	02 Slowing / Stopped / Stalled	<input type="checkbox"/>	2 Farm	<input type="checkbox"/>
03 Failed To Yield Right - of - Way	<input type="checkbox"/>	03 Worn / Smooth Tires	<input type="checkbox"/>	03 Making Left Turn	<input type="checkbox"/>	3 Police Pursuit	<input type="checkbox"/>
04 Improper Backing	<input type="checkbox"/>	04 Defective / Improper Lights	<input type="checkbox"/>	04 Backing	<input type="checkbox"/>	4 Recreational	<input type="checkbox"/>
05 Improper Lane Change	<input type="checkbox"/>	05 Puncture / Blowout	<input type="checkbox"/>	05 Making Right Turn	<input type="checkbox"/>	5 Emergency Operation	<input type="checkbox"/>
06 Improper Turn	<input type="checkbox"/>	06 Steering Mech.	<input type="checkbox"/>	06 Changing Lanes	<input type="checkbox"/>	6 Construction / Maintenance	<input type="checkbox"/>
07 Alcohol - Under Influence	<input type="checkbox"/>	07 Windshield Wipers	<input type="checkbox"/>	07 Entering / Leaving / Parking Space	<input type="checkbox"/>	SOURCE OF CARRIER INFORMATION	
08 Drugs - Under Influence	<input type="checkbox"/>	08 Equipment / Vehicle Defect	<input type="checkbox"/>	08 Properly Parked	<input type="checkbox"/>	1 Not Applicable	<input type="checkbox"/>
09 Alcohol & Drugs - Under Influence	<input type="checkbox"/>	77 All Other (Explain In Narrative)	<input type="checkbox"/>	09 Improperly Parked	<input type="checkbox"/>	2 Shipping Papers	<input type="checkbox"/>
10 Followed Too Closely	<input type="checkbox"/>	POINT OF COLLISION	<input type="checkbox"/>	10 Making U-Turn	<input type="checkbox"/>	3 Vehicle Side	<input type="checkbox"/>
11 Disregarded Traffic Signal	<input type="checkbox"/>	01 On Road	<input type="checkbox"/>	PEDESTRIAN ACTION		4 Driver	<input type="checkbox"/>
12 Exceeded Safe Speed Limit	<input type="checkbox"/>	02 Not On Road	<input type="checkbox"/>	01 Crossing Not at Intersection	<input type="checkbox"/>	5 Other	<input type="checkbox"/>
13 Disregarded Stop Sign	<input type="checkbox"/>	03 Shoulder	<input type="checkbox"/>	02 Crossing at Mid-block Crosswalk	<input type="checkbox"/>		
14 Failed To Maintain Equip. / Vehicle	<input type="checkbox"/>	04 Median	<input type="checkbox"/>	03 Crossing at Intersection	<input type="checkbox"/>		
15 Improper Passing	<input type="checkbox"/>	05 Turn Lane	<input type="checkbox"/>	04 Walking Along Road With Traffic	<input type="checkbox"/>		
16 Drove Left of Center	<input type="checkbox"/>	WORK AREA	<input type="checkbox"/>	05 Walking Along Road Against Traffic	<input type="checkbox"/>		
17 Exceeded Stated Speed Limit	<input type="checkbox"/>	01 None	<input type="checkbox"/>	06 Working on Vehicle In Road	<input type="checkbox"/>		
18 Obstructing Traffic	<input type="checkbox"/>	02 Nearby	<input type="checkbox"/>				
		03 Entered	<input type="checkbox"/>				

FIRST / SUBSEQUENT HARMFUL EVENT(S)			
01 Collision With MV in Transport(Rear End)	<input type="checkbox"/>	15 Collision With Animal	<input type="checkbox"/>
02 Collision With MV in Transport(Head On)	<input type="checkbox"/>	16 MV Hit Sign / Sign Post	<input type="checkbox"/>
03 Collision With MV in Transport(Angle)	<input type="checkbox"/>	17 MV Hit Utility Pole / Light Pole	<input type="checkbox"/>
04 Collision With MV in Transport(Left Turn)	<input type="checkbox"/>	18 MV Hit Guardrail	<input type="checkbox"/>
05 Collision With MV in Transport(Right Turn)	<input type="checkbox"/>	19 MV Hit Fence	<input type="checkbox"/>
06 Collision With MV in Transport(Sideswipe)	<input type="checkbox"/>	20 MV Hit Concrete Barrier Wall	<input type="checkbox"/>
07 Collision With MV in Transport(Backed Into)	<input type="checkbox"/>	21 MV Hit Bridge/Pier/Abutment/Rail	<input type="checkbox"/>
08 Collision With Parked Car	<input type="checkbox"/>	22 MV Hit Tree /Shrubbery	<input type="checkbox"/>
09 Collision With MV on Roadway	<input type="checkbox"/>	23 Collision With Construction Barricade Sign	<input type="checkbox"/>
10 Collision With Pedestrian	<input type="checkbox"/>	24 Collision With Traffic Gate	<input type="checkbox"/>
11 Collision With Bicycle	<input type="checkbox"/>	25 Collision With Crash Attenuators	<input type="checkbox"/>
12 Collision With Bicycle (Bike Lane)	<input type="checkbox"/>	26 Collision With Fixed Object Above Road	<input type="checkbox"/>
13 Collision With Moped	<input type="checkbox"/>	27 MV Hit Other Fixed Object	<input type="checkbox"/>
14 Collision With Train	<input type="checkbox"/>	28 Collision With Moveable Object On Road	<input type="checkbox"/>
		29 MV Ran Into Ditch/Culvert	<input type="checkbox"/>
		30 Ran Off Road Into Water	<input type="checkbox"/>
		31 Overturned	<input type="checkbox"/>
		32 Occupant Fell From Vehicle	<input type="checkbox"/>
		33 Tractor/Trailer Jackknifed	<input type="checkbox"/>
		34 Fire	<input type="checkbox"/>
		35 Explosion	<input type="checkbox"/>
		36 Downhill Runaway	<input type="checkbox"/>
		37 Cargo Loss or Shift	<input type="checkbox"/>
		38 Separation of Units	<input type="checkbox"/>
		39 Median Crossover	<input type="checkbox"/>
		77 All Other (Explain In Narrative)	<input type="checkbox"/>

(ADDITIONAL NARRATIVE)

Blank area for additional narrative.

ADDITIONAL PASSENGERS												
SEC#	PASS#	PASSENGER'S NAME	CURRENT ADDRESS	CITY & STATE	ZIP CODE	DATE OF BIRTH	RACE	SEX	LOC	INJ	S. EQUIP.	EJECT.
SEC#	PASS#	PASSENGER'S NAME	CURRENT ADDRESS	CITY & STATE	ZIP CODE	DATE OF BIRTH	RACE	SEX	LOC	INJ	S. EQUIP.	EJECT.
SEC#	PASS#	PASSENGER'S NAME	CURRENT ADDRESS	CITY & STATE	ZIP CODE	DATE OF BIRTH	RACE	SEX	LOC	INJ	S. EQUIP.	EJECT.
SEC#	PASS#	PASSENGER'S NAME	CURRENT ADDRESS	CITY & STATE	ZIP CODE	DATE OF BIRTH	RACE	SEX	LOC	INJ	S. EQUIP.	EJECT.
SEC#	PASS#	PASSENGER'S NAME	CURRENT ADDRESS	CITY & STATE	ZIP CODE	DATE OF BIRTH	RACE	SEX	LOC	INJ	S. EQUIP.	EJECT.
SEC#	PASS#	PASSENGER'S NAME	CURRENT ADDRESS	CITY & STATE	ZIP CODE	DATE OF BIRTH	RACE	SEX	LOC	INJ	S. EQUIP.	EJECT.
SEC#	PASS#	PASSENGER'S NAME	CURRENT ADDRESS	CITY & STATE	ZIP CODE	DATE OF BIRTH	RACE	SEX	LOC	INJ	S. EQUIP.	EJECT.

Violator(s)	SECTION #	NAME OF VIOLATOR	FL STATUTE NUMBER	CHARGE	CITATION NUMBER
	SECTION #	NAME OF VIOLATOR	FL STATUTE NUMBER	CHARGE	CITATION NUMBER