

FLORIDA

Department of Highway Safety and Motor Vehicles



Traffic Crash Statistics Report 2005

A Compilation of Motor Vehicle Crash Data
from the Florida Crash Records Database

Fred O. Dickinson

Executive Director

Our Mission: Making Highways Safe

www.hsmv.state.fl.us

2005 FLORIDA TRAFFIC CRASH STATISTICS

Traffic crashes	268,605
Drivers involved	395,696
Average crashes per day	736
Mileage Death Rate (per 100 million VMT)	1.76
Fatalities	3,533
Fatal crashes	3,185
Injuries	233,930
Injury crashes	147,879
Property damage only crashes	117,541
Alcohol-related fatalities	1,239
Alcohol-related injuries	17,783
Alcohol-related crashes	23,864
Alcohol-related fatal crashes	1,112
Alcohol-related injury crashes	11,137
Drug-related fatalities	224
Drug-related injuries	948
Drug-related crashes	1,176
Pedestrians killed	576
Pedestrians injured	7,975
Pedestrian crashes	8,626
Bicyclists killed	119
Bicyclists injured	4,515
Bicycle crashes	4,895
Motorcyclists killed	441
Motorcyclists injured	7,282
Motorcycle crashes	8,147

TABLE OF CONTENTS

2005 Florida Traffic Crash Statistics

Source of Data	4
Definition of Terms	5
State of Florida Summary	7
Safety Equipment Use/Injury Levels	
Equipment Use by Drivers	10
Equipment Use by Vehicle Passengers	10
Equipment Use by Drivers and Vehicle Passengers	10
Equipment Use by Motorcyclists and Their Passengers	11
Equipment Use by Bicyclists and Their Passengers	11
Injuries and Fatalities by Miscellaneous Vehicles	12
Summary of Injuries and Fatalities	12
Motorcyclists and Bicyclists Crash Trends	
Motorcyclists and Bicyclists Killed	13
Motorcyclists and Bicyclists Injured	13
Motorcycle Crash Trend	
Motorcycle Crashes	14
Safety Equipment Use and Child Passengers	
Child Restraint Device and Safety Belt Use by Passenger Age Groups	15
Child Passengers Injured or Killed	15
Age of Drivers in Crashes	
Crash Rates for Florida Resident Drivers in Crashes by Age Groups	16
Crash Rates for Florida Resident Drinking Drivers in Crashes by Age Groups	16
Selected Age Groups	
Crash Rates for Florida Resident Drivers in Crashes for a Selected Age Group (15 - 29)	17
Crash Rates for Florida Resident Drivers in Crashes for a Selected Age Group (70 - 90+)	17
Crash Rates for Florida Resident Drinking Drivers in Crashes for a Selected Age Group (15 - 29)	18
Crash Rates for Florida Resident Drinking Drivers in Crashes for a Selected Age Group (70 - 90+)	18
Driver Profile	
Drivers Killed or Injured by Residence and Gender	19
Drivers Killed or Injured by Residence	19
Drivers Killed or Injured by Age Groups	19
Persons in Crashes by Age and Gender	
Persons Killed	20
Persons Injured	21
Pedestrian Behavior	
Pedestrians Killed in Crashes by Age and Type of Actions	22
Pedestrians Injured in Crashes by Age and Type of Actions	23
Pedestrians in Crashes by Age and Percent Drinking	24
Pedestrians in Crashes by Injury Severity and Percent Drinking	24
Pedestrian Crash Trend	
Pedestrians Killed	25
Pedestrians Injured	25
Pedestrian Fatality Rate	25

TABLE OF CONTENTS (Continued)

2005 Florida Traffic Crash Statistics

Truck Passengers	
Passengers Riding in Beds of Trucks by Age and Truck Types	26
Florida Motoring Environment	
Motoring Environment	27
Mileage Death Rate	28
Holiday Traffic Fatalities	29
Traffic Crashes by Day of Week and Time of Day	
All Crashes/Fatal Crashes	30
Traffic Crashes by Month	
All Crashes	31
Fatal Crashes	31
Contributing Causes	
Contributing Causes of Drivers in Crashes	32
Environmental Causes	
Lighting Conditions at the Time of Crash	33
Road Surface Conditions at the Time of Crash	33
Vehicle Harmful Events	
Vehicle Harmful Events	34
Vehicle and Truck Information	
Vehicle Types Involved in Crashes	35
Contributing Causes of Drivers in Truck Crashes	36
County Data (2001 through 2005)	
Crash History	37
Alcohol-Related Crash History	38
Fatality History	39
Alcohol-Related Fatality History	40
Injury History	41
Alcohol-Related Injury History	42
Vehicle and/or Property Damage Only Crash History	43
Motorcycle Fatality History	44
Motorcycle Injury History	45
Bicycle Fatality History	46
Bicycle Injury History	47
Pedestrian Fatality History	48
Pedestrian Injury History	49
CMV-Related Crash History	50
CMV-Related Fatality History	51
CMV-Related Injury History	52
Alcohol-Related Crashes by City/Locality	
Total Crashes and Alcohol-Related Crashes by City/Locality	53
Appendix	
Florida Traffic Crash Report Forms	

Source of Data

2005 Florida Traffic Crash Statistics

The information contained in this Traffic Crash Statistics booklet is extracted from law enforcement agency long-form reports of traffic crashes. A law enforcement officer must submit a long-form crash report when investigating:

- Motor vehicle crashes resulting in death or personal injury, or
- Motor vehicle crashes in which one or more of the following conditions occur:
 - Leaving the scene involving damage to an attended vehicle or property (Section 316.061 (1), F.S.), or
 - Driving while under the influence of alcoholic beverages, chemical substances, or controlled substances or with an unlawful blood alcohol level (Section 316.193, F.S.).

An investigating officer may report other traffic crashes on the long-form crash report. In particular, applicable statutes specify an officer's discretion to submit a long-form report in crashes where a vehicle is rendered inoperable to the degree that a wrecker is required to remove it from traffic.

Statutory revisions in 1983 and 1989 reduced the number of non-injury crashes required to be reported to the Department. Any presentation of historical data that includes such crashes, such as total traffic crash counts, will reflect these changes. Data on traffic crashes involving death, injury, or other criteria for law enforcement long-form reports as outlined above are not affected.

Definition of Terms

2005 Florida Traffic Crash Statistics

The following terms are defined as they apply to the crash data presented in this publication. These definitions may differ from legal or other uses of the same terms.

Alcohol-related traffic crash	A crash involving a driver and/or pedestrian for whom alcohol use was reported (does not presume intoxication).
Bicycle	A vehicle propelled solely by human power or a motorized bicycle propelled by a combination of human power and an electric helper motor rated at 200 watts or less (this term does not include a vehicle with a seat height less than 26 inches from the ground when the seat is adjusted to its highest position, or a scooter or similar device).
Bicyclist	The driver of a bicycle. A passenger on a bicycle is considered a vehicle passenger.
Commercial motor vehicle (CMV)	Means any motor vehicle or motor vehicle combination used on the streets or highways which: 1) has a gross, declared, or actual weight rating of 26,001 pounds or more; 2) is designed to transport more than 15 persons, including the driver; or 3) is transporting hazardous materials and is required to be placarded.
Driver	Unless otherwise indicated, the operator of a motor vehicle or bicycle. Driver data typically exclude uninjured persons presumed to have been operating hit-and-run, phantom, or properly parked vehicles.
Drinking driver	Indicates investigating officer's judgment on whether a driver was using alcohol. Codes include alcohol-under influence, alcohol and drugs-under influence, and had been drinking.
Fatal traffic crash	A traffic crash that results in one or more fatalities within thirty days of occurrence.
Harmful events	Identifies the first and subsequent harmful events for each vehicle in a traffic crash.
Injury	Hurt, damage, or loss sustained by a person as a result of a traffic crash. Definitions for the various injury levels are as follows:
<i>Possible injury</i>	<i>No visible signs of injury but complaint of pain or momentary unconsciousness.</i>

Definition of Terms

(Continued)

2005 Florida Traffic Crash Statistics

<i>Non-incapacitating injury</i>	<i>Any visible injuries such as bruises, abrasions, limping, etc.</i>
<i>Incapacitating injury</i>	<i>Any visible signs of injury from a crash and person(s) had to be carried from the scene.</i>
<i>Total injury</i>	<i>The sum of possible, non-incapacitating, and incapacitating injuries.</i>
Injury crash	A non-fatal traffic crash that results in one or more injuries.
Long form	Refers to a crash report prepared by a law enforcement officer where there has been a crash resulting in bodily injury, the death of a person or where a specified criminal offense has been committed.
Moped	A motor-powered cycle with a pedal-activated motor and a maximum of two brake horsepower.
Motor vehicle	Any motorized vehicle not operating on rails.
Motorcycle	A motor vehicle, with a seat or saddle for the driver's use, traveling with no more than three wheels in contact with the ground, excluding a tractor or a moped.
Motorcyclist	The driver of a motorcycle. A passenger on a motorcycle is considered a vehicle passenger.
Short form	Refers to a crash report in which the threshold of the long form does not apply. Therefore, a long form report is not prepared. In crashes where apparent damage is less than \$500, the law enforcement officer shall provide each party involved in the crash a short form prescribed by the state, to be completed by each party of the parties.
Traffic crash	A crash involving at least one motor vehicle on a roadway that is open to the public.
Traffic fatality	The death of a person as a direct result of a traffic crash within thirty days of the crash occurrence.
Vehicle and/or property damage only crash	Loss of all or part of an individual's vehicle and/or property resulting from a traffic crash not involving injury to a person.
Vehicle occupants	Drivers and passengers of automobiles, vans, trucks, buses, and motor homes.

State of Florida Summary

2005 Florida Traffic Crash Statistics

ALL CRASHES

Compared to 2004, there was a **6.2% increase** in traffic crashes investigated and reported.

Traffic crashes	268,605
Drivers involved	395,696
Average crashes per day	736
Mileage Death Rate (per 100 million VMT)	1.76

FATALITIES AND FATAL CRASHES

Compared to 2004, there was an **8.5% increase** in traffic fatalities.

Fatalities	3,533
Fatal crashes	3,185

INJURIES AND INJURY CRASHES

Compared to 2004, there was a **3.0% increase** in traffic injuries.

Possible injuries	127,736
Non-incapacitating injuries	76,944
Incapacitating injuries	29,250
Total injuries	233,930
Injury crashes	147,879

ALCOHOL-RELATED FATALITIES, INJURIES, AND CRASHES

35.1% of traffic fatalities and 8.9% of traffic crashes were alcohol-related.

Alcohol-related fatalities	1,239
Alcohol-related injuries	17,783
Alcohol-related crashes	23,864
Alcohol-related fatal crashes	1,112
Alcohol-related injury crashes	11,137

CRASH ENVIRONMENTS

59.3% of all crashes occurred in primarily business areas, while 59.7% of fatal crashes were in open country or residential areas.

Crashes in Business Areas	159,366
Crashes in Residential Areas	76,602
Crashes in Open Country	32,634
Fatal Crashes in Business Areas	1,282
Fatal Crashes in Residential Areas	899
Fatal Crashes in Open Country	1,004

State of Florida Summary

2005 Florida Traffic Crash Statistics

PEDESTRIAN CRASHES

16.3% of all traffic fatalities were pedestrians.

Pedestrians killed	576
Pedestrians injured	7,975
Pedestrian crashes	8,626

Drinking is a major problem with pedestrians in traffic crashes. 11.39% (1,041) of all pedestrians in all crashes (9,141) had been drinking and 39.24% (226) of all pedestrian fatalities (576) had been drinking.

BICYCLE CRASHES

3.4% of all traffic fatalities were bicycle drivers.

Bicyclists killed	119
Bicyclists injured	4,515
Bicycle crashes	4,895

MOTORCYCLE CRASHES

12.5% of all traffic fatalities were motorcycle drivers.

Motorcyclists killed	441
Motorcyclists injured	7,282
Motorcycle crashes	8,147

SAFETY EQUIPMENT USAGE

In 2005, Florida experienced 2,325 traffic deaths of drivers and passengers in Seat Belt Equipped Vehicles (SBEV). The tragic note of this, is 62.1% (1,444) of these people killed were not wearing seat belts.

Fifty-seven percent of motorcyclists and their passengers killed were wearing helmets while 10% of bicyclists killed were wearing helmets. Forty-three percent of motorcyclists and their passengers killed were not wearing helmets while 90% of bicyclists killed were not wearing helmets.

56.7% (89 of 157) of the children ages 0 to 17 years old killed were not using safety equipment.

AGE OF FLORIDA RESIDENT DRIVERS IN CRASHES

Drivers in the age group of 15 to 19 years old have the highest rate per 10,000 licensed drivers of crash involvement (488.97) and the highest rate in fatal crashes (5.70). Drivers in the age group of 20 to 24 years old hold the second highest rate in both categories.

AGE OF FLORIDA RESIDENT DRIVERS IN CRASHES (Continued)

Drivers in the age group of 20 to 24 years old who had been drinking had the highest rate per 10,000 licensed drivers of crash involvement (25.95) and the highest rate in fatal crashes (1.27).

Drivers 18 years of age had the highest rate of crash involvement in all crashes (623.91) and in fatal crashes (8.09).

Of drinking drivers in crashes, 21 year old drivers had the highest involvement rate in all crashes (30.48) and in fatal crashes (1.58).

HOLIDAY TRAFFIC FATALITIES

Thanksgiving 2005 Holiday experienced the highest fatality rate per hour (0.55) with 66 people killed in the 120 hour holiday period. 45.5% (30) of these fatalities had alcohol involved in the crash.

DAY AND TIME OF CRASHES

Friday, during the 4 p.m. hour, had the highest number of all types of crashes (3,428). Saturday had three different times with 43 fatal crashes which is the highest number of fatal crashes in Florida. The times are Saturday, 2 a.m.; 7 p.m.; and 8 p.m. Sunday, during the 1 a.m. hour, was second with 42 fatal crashes.

Safety Equipment Use/ Injury Levels

2005 Florida Traffic Crash Statistics

TABLE 1* **Comparative Safety Equipment Use By Drivers**

	No Injury	%	Possible Injury	%	Non-Incapacitating Injury	%	Incapacitating Injury	%	Fatal	%	Injury Not Stated	%	Total
Safety Belt	112,090	48.09	32,853	39.87	15,467	33.34	4,512	27.92	193	12.31	7	0.96	165,122
Belt & Bag-Deployed	16,249	6.97	11,939	14.49	11,716	25.25	4,228	26.16	270	17.22	2	0.27	44,404
Belt & Bag-Not Deployed	88,582	38.01	30,714	37.27	13,006	28.03	3,914	24.22	133	8.48	11	1.51	136,360
Not Using Safety Equipment	13,280	5.70	4,575	5.55	4,402	9.49	2,515	15.56	718	45.79	7	0.96	25,497
Air Bag Only-Deployed	551	0.24	590	0.72	677	1.46	364	2.25	87	5.55	0	0.00	2,269
Air Bag Only-Not Deployed	2,107	0.90	1,016	1.23	969	2.09	590	3.65	163	10.40	0	0.00	4,845
Use Not Stated	214	0.09	715	0.87	161	0.35	37	0.23	4	0.26	703	96.30	1,834
TOTAL	233,073	100	82,402	100	46,398	100	16,160	100	1,568	100	730	100	380,331

Comparative Safety Equipment Use By Vehicle Passengers

	No Injury	%	Possible Injury	%	Non-Incapacitating Injury	%	Incapacitating Injury	%	Fatal	%	Injury Not Stated	%	Total
Safety Belt	57,758	48.47	18,565	47.53	8,375	41.70	2,438	33.43	123	16.25	0	0.00	87,259
Belt & Bag-Deployed	3,528	2.96	2,936	7.52	2,769	13.79	992	13.60	90	11.89	0	0.00	10,315
Belt & Bag-Not Deployed	23,757	19.94	9,432	24.15	3,841	19.13	1,211	16.60	45	5.94	0	0.00	38,286
Child Restraint	7,325	6.15	1,738	4.45	450	2.24	89	1.22	14	1.85	0	0.00	9,616
Child Restraint/Belt	1,496	1.26	346	0.89	116	0.58	24	0.33	3	0.40	0	0.00	1,985
Child Restraint/Bag-Deployed	56	0.05	45	0.12	23	0.11	10	0.14	4	0.53	0	0.00	138
Child Restraint/Bag-Not Deployed	696	0.58	186	0.48	46	0.23	13	0.18	0	0.00	0	0.00	941
Not Using Safety Equipment	23,083	19.37	5,117	13.10	3,810	18.97	2,102	28.82	394	52.05	0	0.00	34,506
Air Bag Only-Deployed	176	0.15	181	0.46	182	0.91	78	1.07	18	2.38	0	0.00	635
Air Bag Only-Not Deployed	1,254	1.05	507	1.30	461	2.30	333	4.57	64	8.45	0	0.00	2,619
Use Not Stated	22	0.02	9	0.02	10	0.05	3	0.04	2	0.26	0	0.00	46
TOTAL	119,151	100	39,062	100	20,083	100	7,293	100	757	100	0	0	186,346

TABLE 1A* **Comparative Safety Equipment Use By Drivers and Vehicle Passengers**

	No Injury	%	Possible Injury	%	Non-Incapacitating Injury	%	Incapacitating Injury	%	Fatal	%	Injury Not Stated	%	Total
Safety Belt	169,848	48.22	51,418	42.33	23,842	35.86	6,950	29.63	316	13.59	7	0.96	252,381
Belt & Bag-Deployed	19,777	5.61	14,875	12.25	14,485	21.79	5,220	22.26	360	15.48	2	0.27	54,719
Belt & Bag-Not Deployed	112,339	31.89	40,146	33.05	16,847	25.34	5,125	21.85	178	7.66	11	1.51	174,646
Child Restraint	7,325	2.08	1,738	1.43	450	0.68	89	0.38	14	0.60	0	0.00	9,616
Child Restraint/Belt	1,496	0.42	346	0.28	116	0.17	24	0.10	3	0.13	0	0.00	1,985
Child Restraint/Bag-Deployed	56	0.02	45	0.04	23	0.03	10	0.04	4	0.17	0	0.00	138
Child Restraint/Bag-Not Deployed	696	0.20	186	0.15	46	0.07	13	0.06	0	0.00	0	0.00	941
Not Using Safety Equipment	36,363	10.32	9,692	7.98	8,212	12.35	4,617	19.69	1,112	47.83	7	0.96	60,003
Air Bag Only-Deployed	727	0.21	771	0.63	859	1.29	442	1.88	105	4.52	0	0.00	2,904
Air Bag Only-Not Deployed	3,361	0.95	1,523	1.25	1,430	2.15	923	3.94	227	9.76	0	0.00	7,464
Use Not Stated	236	0.07	724	0.60	171	0.26	40	0.17	6	0.26	703	96.30	1,880
TOTAL	352,224	100	121,464	100	66,481	100	23,453	100	2,325	100	730	100	566,677

* Both tables refer to Seat Belt Equipped Vehicles (SBEV) which include vehicle types: automobiles, vans, trucks, motor homes, and buses.

NOTE: In 2005, Florida experienced 2,325 traffic deaths of drivers and passengers in SBEV. The tragic note of this, is 62.1% (1,444) of these people killed were not wearing seat belts.

Safety Equipment Use/ Injury Levels*

2005 Florida Traffic Crash Statistics

TABLE 1B Comparative Safety Equipment Use By Motorcyclists and Their Passengers

	No Injury	%	Possible Injury	%	Non-Incapacitating Injury	%	Incapacitating Injury	%	Fatal	%	Injury Not Stated	%	Total
With Safety Helmet													
Driver	392	47.75	812	49.57	2,069	53.55	1,313	50.27	252	52.83	0	0.00	4,838
Passenger	44	5.36	88	5.37	185	4.79	129	4.94	20	4.19	0	0.00	466
SUBTOTAL	436	53.11	900	54.95	2,254	58.33	1,442	55.21	272	57.02	0	0.00	5,304
Without Safety Helmet													
Driver	307	37.39	630	38.46	1,415	36.62	1,019	39.01	189	39.62	0	0.00	3,560
Passenger	78	9.50	94	5.74	187	4.84	149	5.70	16	3.35	0	0.00	524
SUBTOTAL	385	46.89	724	44.20	1,602	41.46	1,168	44.72	205	42.98	0	0.00	4,084
Use Not Stated													
Driver	0	0.00	14	0.85	8	0.21	2	0.08	0	0.00	3	100.00	27
Passenger	0	0.00	0	0.00	0	0.00	0	0.00	0	0.00	0	0.00	0
SUBTOTAL	0	0.00	14	0.85	8	0.21	2	0.08	0	0.00	3	100.00	27
TOTAL	821	100	1,638	100	3,864	100	2,612	100	477	100	3	100	9,415

TABLE 1C Comparative Safety Equipment Use By Bicyclists and Their Passengers

	No Injury	%	Possible Injury	%	Non-Incapacitating Injury	%	Incapacitating Injury	%	Fatal	%	Injury Not Stated	%	Total
With Safety Helmet													
Driver	46	12.04	149	10.03	315	14.00	115	13.63	12	10.08	0	0.00	637
Passenger	1	0.26	3	0.20	6	0.27	3	0.36	0	0.00	0	0.00	13
SUBTOTAL	47	12.30	152	10.23	321	14.27	118	13.98	12	10.08	0	0.00	650
Without Safety Helmet													
Driver	270	70.68	1,285	86.47	1,899	84.40	713	84.48	107	89.92	0	0.00	4,274
Passenger	65	17.02	27	1.82	18	0.80	8	0.95	0	0.00	0	0.00	118
SUBTOTAL	335	87.70	1,312	88.29	1,917	85.20	721	85.43	107	89.92	0	0.00	4,392
Use Not Stated													
Driver	0	0.00	22	1.48	12	0.53	5	0.59	0	0.00	1	100.00	40
Passenger	0	0.00	0	0.00	0	0.00	0	0.00	0	0.00	0	0.00	0
SUBTOTAL	0	0.00	22	1.48	12	0.53	5	0.59	0	0.00	1	100.00	40
TOTAL	382	100	1,486	100	2,250	100	844	100	119	100	1	100	5,082

* Injuries reported for motorcyclists and bicyclists include head and other bodily injuries.

NOTE: Fifty-seven percent of motorcyclists and their passengers killed were wearing helmets while 10% of bicyclists killed were wearing helmets. Forty-three percent of motorcyclists and their passengers killed were not wearing helmets while 90% of bicyclists killed were not wearing helmets.

Safety Equipment Use/ Injury Levels

2005 Florida Traffic Crash Statistics

TABLE 1D INJURIES AND FATALITIES BY MISCELLANEOUS VEHICLES

	No Injury	%	Possible Injury	%	Non-Incapacitating Injury	%	Incapacitating Injury	%	Fatal	%	Injury Not Stated	%	Total
Moped													
Driver	63	73.26	142	86.06	393	89.73	148	91.36	8	100.00	0	0.00	754
Passenger	23	26.74	23	13.94	45	10.27	14	8.64	0	0.00	0	0.00	105
SUBTOTAL	86	100	165	100	438	100	162	100	8	100	0	0	859
All Terrain Vehicle													
Driver	182	62.33	111	65.68	216	75.52	186	77.18	20	83.33	1	100.00	716
Passenger	110	37.67	58	34.32	70	24.48	55	22.82	4	16.67	0	0.00	297
SUBTOTAL	292	100	169	100	286	100	241	100	24	100	1	100	1,013
Train													
Driver	49	24.75	1	33.33	0	0.00	0	0.00	0	0.00	0	0.00	50
Passenger	149	75.25	2	66.67	0	0.00	0	0.00	0	0.00	0	0.00	151
SUBTOTAL	198	100	3	100	0	0	0	0	0	0	0	0	201
Low Speed Vehicle													
Driver	56	65.12	21	80.77	49	81.67	23	92.00	2	100.00	0	0.00	151
Passenger	30	34.88	5	19.23	11	18.33	2	8.00	0	0.00	0	0.00	48
SUBTOTAL	86	100	26	100	60	100	25	100	2	100	0	0	199
Unknown Vehicle Type													
Driver	0	0.00	140	77.78	43	69.35	9	60.00	2	100.00	0	0.00	194
Passenger	356	100.00	40	22.22	19	30.65	6	40.00	0	0.00	0	0.00	421
SUBTOTAL	356	100	180	100	62	100	15	100	2	100	0	0	615
TOTAL	1,018		543		846		443		36		1		2,887

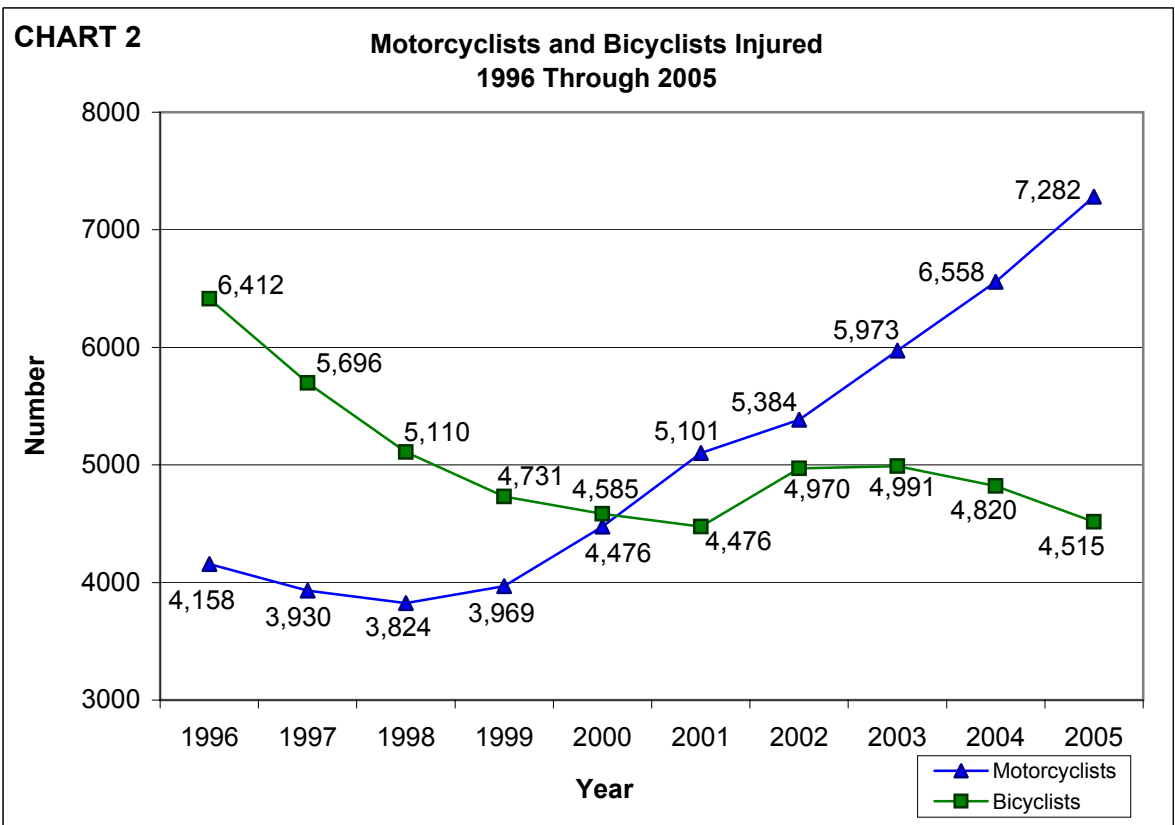
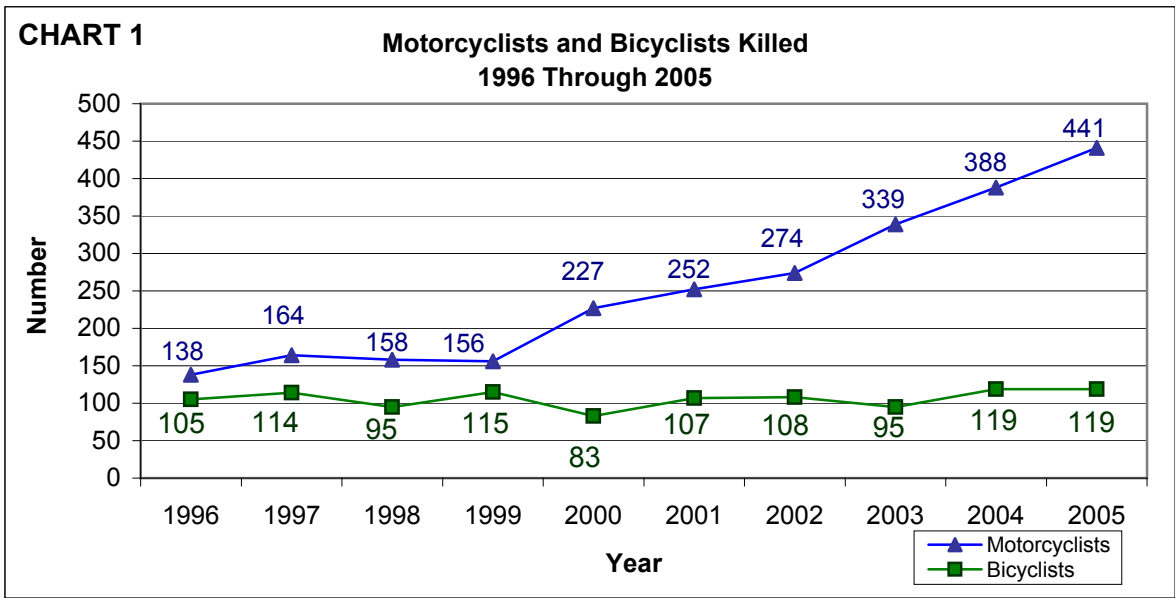
TABLE 1E SUMMARY OF INJURIES AND FATALITIES

	No Injury	%	Possible Injury*	%	Non-Incapacitating Injury*	%	Incapacitating Injury*	%	Fatal	%	Injury Not Stated	%	Total
Table 1A	352,224	99.22	121,464	95.11	66,481	86.41	23,453	80.19	2,325	65.81	730	98.92	566,677
Table 1B	821	0.23	1,638	1.28	3,864	5.02	2,612	8.93	477	13.50	3	0.41	9,415
Table 1C	382	0.11	1,486	1.16	2,250	2.92	844	2.89	119	3.37	1	0.14	5,082
Table 1D	1,018	0.29	543	0.43	846	1.10	443	1.51	36	1.02	1	0.14	2,887
Pedestrians	563	0.16	2,584	2.02	3,496	4.54	1,895	6.48	576	16.30	3	0.41	9,117
TOTAL	355,008	100	127,715	100	76,937	100	29,247	100	3,533	100	738	100	593,178

* Injury levels may not total due to incomplete data of injured persons.

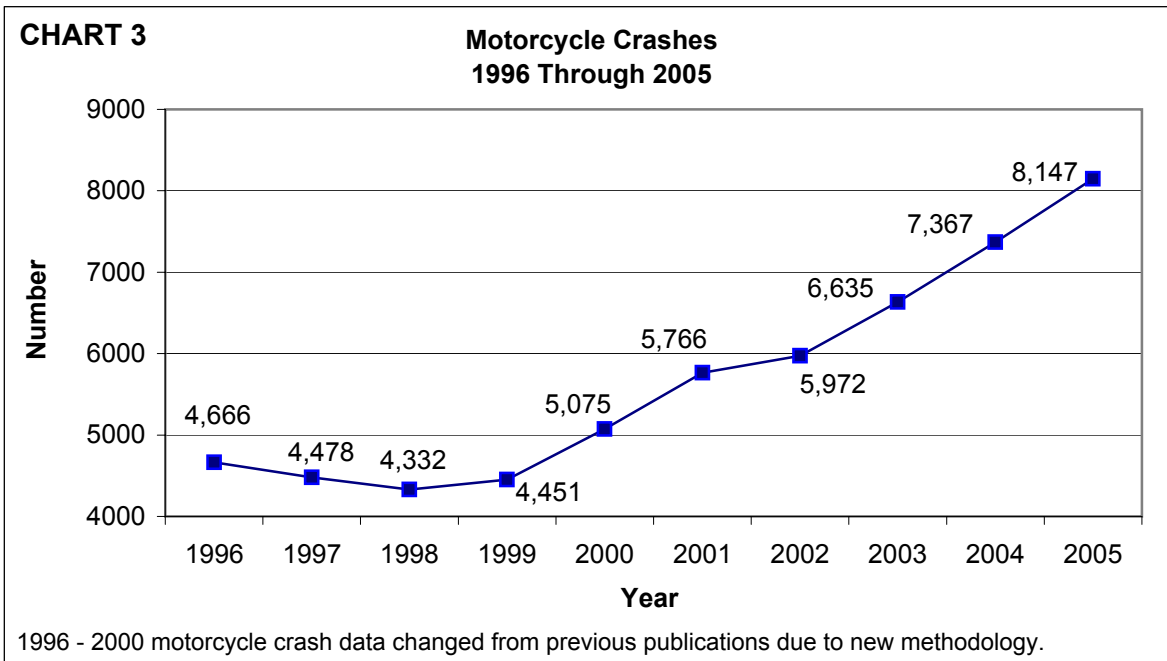
Motorcyclists and Bicyclists Crash Trends

2005 Florida Traffic Crash Statistics



Motorcycle Crash Trend

2005 Florida Traffic Crash Statistics



Safety Equipment Use and Child Passengers*

2005 Florida Traffic Crash Statistics

**Child Restraint Device and Safety Belt Use
By Passenger Age Groups**

TABLE 2

Age Group	No Injury	%	Injury	%	Fatal	%	Injury Not Stated	%
0 to 3								
With Restraint	8,751	94.22	2,758	89.66	16	59.26	0	0.00
Without Restraint	537	5.78	318	10.34	11	40.74	0	0.00
Use Not Stated	0	0.00	0	0.00	0	0.00	0	0.00
Total	9,288	100	3,076	100	27	100	0	0
4 to 5								
With Restraint	4,116	89.69	1,651	87.87	9	69.23	0	0.00
Without Restraint	473	10.31	228	12.13	4	30.77	0	0.00
Use Not Stated	0	0.00	0	0.00	0	0.00	0	0.00
Total	4,589	100	1,879	100	13	100	0	0
6 to 17								
With Restraint	25,136	74.16	12,354	77.25	43	36.75	0	0.00
Without Restraint	8,760	25.84	3,636	22.74	74	63.25	0	0.00
Use Not Stated	0	0.00	2	0.00	0	0.00	0	0.00
Total	33,896	100	15,992	100	117	100	0	0

NOTE: 56.7% (89 of 157) of the children ages 0 to 17 years old killed were not using safety equipment.

**Child Passengers Injured or Killed
1996 Through 2005**

TABLE 3

Year	Age Group By Injury Level												
	Injury						Fatal						
	0 to 3	%	4 to 5	%	6 to 17	%	0 to 3	%	4 to 5	%	6 to 17	%	Total
1996	2,730	9.72	2,300	11.88	19,216	10.95	19	10.05	9	9.47	109	9.91	24,383
1997	2,740	9.75	2,215	11.44	19,610	11.17	12	6.35	9	9.47	104	9.45	24,690
1998	2,572	9.16	2,186	11.29	19,791	11.27	19	10.05	12	12.63	97	8.82	24,677
1999	2,554	9.09	2,003	10.34	19,565	11.15	15	7.94	9	9.47	120	10.91	24,266
2000	2,642	9.40	1,939	10.01	17,684	10.07	15	7.94	8	8.42	121	11.00	22,409
2001	2,731	9.72	1,925	9.94	18,035	10.27	12	6.35	7	7.37	109	9.91	22,819
2002	2,957	10.53	1,545	7.98	14,811	8.44	24	12.70	9	9.47	105	9.55	19,451
2003	3,139	11.17	1,591	8.22	15,202	8.66	21	11.11	6	6.32	97	8.82	20,056
2004	2,951	10.50	1,780	9.19	15,642	8.91	25	13.23	13	13.68	121	11.00	20,532
2005	3,076	10.95	1,879	9.70	15,992	9.11	27	14.29	13	13.68	117	10.64	21,104
Total	28,092	100	19,363	100	175,548	100	189	100	95	100	1,100	100	224,387

* Does not include passengers of bicycles, motorcycles, or all-terrain vehicles on both tables.

Age of Drivers in Crashes*

2005 Florida Traffic Crash Statistics

TABLE 4 Crash Rates for Florida Resident Drivers in Crashes By Age Groups

Age Groups	Driver Licenses Issued	Drivers in All Crashes	Rate Per 10,000 Licensed Drivers	Drivers in Fatal Crashes	Rate Per 10,000 Licensed Drivers
Under 15	0	693		5	
15-19	793,020	38,776	488.97	452	5.70
20-24	1,246,744	52,009	417.16	626	5.02
25-29	1,352,079	39,610	292.96	469	3.47
30-34	1,366,585	36,853	269.67	435	3.18
35-39	1,433,189	36,186	252.49	387	2.70
40-44	1,541,813	36,835	238.91	428	2.78
45-49	1,459,760	31,527	215.97	385	2.64
50-54	1,283,259	25,023	195.00	319	2.49
55-59	1,175,087	20,163	171.59	230	1.96
60-64	960,592	14,153	147.34	197	2.05
65-69	783,298	9,813	125.28	142	1.81
70-74	648,710	7,359	113.44	113	1.74
75-79	560,709	6,156	109.79	98	1.75
80-84	399,744	4,292	107.37	84	2.10
85-89	196,458	1,961	99.82	62	3.16
90+	71,633	642	89.62	10	1.40
Unknown	0	4,239		29	
TOTAL	15,272,680	366,290	239.83	4,471	2.93

NOTE: Drivers 15 to 19 years of age have the highest rate per 10,000 licensed drivers of crash involvement (488.97) and the highest rate in fatal crashes (5.70). Drivers 20 to 24 hold the second highest rate in both categories.

TABLE 5 Crash Rates for Florida Resident Drinking Drivers in Crashes By Age Groups

Age Groups	Driver Licenses Issued	Drinking Drivers in All Crashes	Rate Per 10,000 Licensed Drivers	Drinking Drivers in Fatal Crashes	Rate Per 10,000 Licensed Drivers
Under 15	0	14		1	
15-19	793,020	1,076	13.57	62	0.78
20-24	1,246,744	3,235	25.95	158	1.27
25-29	1,352,079	2,392	17.69	100	0.74
30-34	1,366,585	1,773	12.97	95	0.70
35-39	1,433,189	1,732	12.08	85	0.59
40-44	1,541,813	1,956	12.69	100	0.65
45-49	1,459,760	1,609	11.02	76	0.52
50-54	1,283,259	1,036	8.07	54	0.42
55-59	1,175,087	678	5.77	21	0.18
60-64	960,592	382	3.98	23	0.24
65-69	783,298	247	3.15	10	0.13
70-74	648,710	127	1.96	2	0.03
75-79	560,709	63	1.12	3	0.05
80-84	399,744	35	0.88	5	0.13
85-89	196,458	9	0.46	3	0.15
90+	71,633	12	1.68	0	0.00
Unknown	0	240		4	
TOTAL	15,272,680	16,616	10.88	802	0.53

NOTE: Drivers 20 to 24 years of age who had been drinking had the highest rate per 10,000 licensed drivers of crash involvement (25.95) and the highest rate in fatal crashes (1.27).

* Does not include drivers of bicycles, mopeds, ATVs, or trains in "all crashes" and in "fatal crashes" categories on both tables.

Selected Age Groups*

2005 Florida Traffic Crash Statistics

TABLE 6
Crash Rates for Florida Resident Drivers
In Crashes for a Selected Age Group (15 - 29)

Age of Driver	Driver Licenses Issued	Drivers in All Crashes	Rate Per 10,000 Licensed Drivers	Drivers in Fatal Crashes	Rate Per 10,000 Licensed Drivers
15	78,883	622	78.85	8	1.01
16	138,633	5,424	391.25	54	3.90
17	168,710	8,674	514.14	96	5.69
18	194,114	12,111	623.91	157	8.09
19	212,680	11,945	561.64	137	6.44
20	228,769	11,363	496.70	131	5.73
21	239,858	11,115	463.40	142	5.92
22	252,727	10,387	411.00	128	5.06
23	260,778	9,825	376.76	113	4.33
24	264,612	9,319	352.18	112	4.23
25	274,998	8,824	320.88	101	3.67
26	274,316	8,274	301.62	94	3.43
27	267,922	7,894	294.64	96	3.58
28	272,525	7,387	271.06	91	3.34
29	262,318	7,231	275.66	87	3.32

NOTE: Drivers 18 years of age had the highest rate of crash involvement in all crashes (623.91) and fatal crashes (8.09).

TABLE 6A
Crash Rates for Florida Resident Drivers
In Crashes for a Selected Age Group (70 - 90+)

Age of Driver	Driver Licenses Issued	Drivers in All Crashes	Rate Per 10,000 Licensed Drivers	Drivers in Fatal Crashes	Rate Per 10,000 Licensed Drivers
70	140,407	1,619	115.31	20	1.42
71	133,000	1,545	116.17	22	1.65
72	125,548	1,409	112.23	18	1.43
73	127,131	1,422	111.85	27	2.12
74	122,624	1,364	111.23	26	2.12
75	122,904	1,335	108.62	14	1.14
76	115,702	1,269	109.68	15	1.30
77	113,156	1,256	111.00	25	2.21
78	109,021	1,225	112.36	20	1.83
79	99,926	1,071	107.18	24	2.40
80	94,906	1,008	106.21	14	1.48
81	87,482	975	111.45	17	1.94
82	79,887	856	107.15	21	2.63
83	70,612	797	112.87	20	2.83
84	66,857	656	98.12	12	1.79
85	55,038	548	99.57	9	1.64
86	45,909	490	106.73	19	4.14
87	38,316	360	93.96	11	2.87
88	32,805	330	100.59	11	3.35
89	24,390	233	95.53	12	4.92
90+	71,633	642	89.62	10	1.40

NOTE: Drivers 71 years of age have the highest rate of crash involvement in all crashes (116.17) but 89 year old drivers had the highest rate of involvement in fatal crashes (4.92).

* Does not include drivers of bicycles, mopeds, ATVs, or trains in "all crashes" and in "fatal crashes" categories on both tables.

Selected Age Groups*

2005 Florida Traffic Crash Statistics

TABLE 7
Crash Rates for Florida Resident Drinking Drivers
In Crashes for a Selected Age Group (15 - 29)

Age of Driver	Driver Licenses Issued	Drinking Drivers in All Crashes	Rate Per 10,000 Licensed Drivers	Drinking Drivers in Fatal Crashes	Rate Per 10,000 Licensed Drivers
15	78,883	13	1.65	1	0.13
16	138,633	75	5.41	2	0.14
17	168,710	165	9.78	14	0.83
18	194,114	381	19.63	26	1.34
19	212,680	442	20.78	19	0.89
20	228,769	506	22.12	29	1.27
21	239,858	731	30.48	38	1.58
22	252,727	719	28.45	35	1.38
23	260,778	675	25.88	33	1.27
24	264,612	604	22.83	23	0.87
25	274,998	558	20.29	28	1.02
26	274,316	522	19.03	25	0.91
27	267,922	476	17.77	18	0.67
28	272,525	423	15.52	16	0.59
29	262,318	413	15.74	13	0.50

NOTE: 21 year old drinking drivers had the highest involvement rate in all crashes (30.48) and in fatal crashes (1.58).

TABLE 7A
Crash Rates for Florida Resident Drinking Drivers
In Crashes for a Selected Age Group (70 - 90+)

Age of Driver	Driver Licenses Issued	Drinking Drivers in All Crashes	Rate Per 10,000 Licensed Drivers	Drinking Drivers in Fatal Crashes	Rate Per 10,000 Licensed Drivers
70	140,407	27	1.92	0	0.00
71	133,000	28	2.11	0	0.00
72	125,548	31	2.47	0	0.00
73	127,131	18	1.42	0	0.00
74	122,624	23	1.88	2	0.16
75	122,904	14	1.14	0	0.00
76	115,702	13	1.12	1	0.09
77	113,156	18	1.59	0	0.00
78	109,021	6	0.55	1	0.09
79	99,926	12	1.20	1	0.10
80	94,906	5	0.53	1	0.11
81	87,482	7	0.80	2	0.23
82	79,887	10	1.25	1	0.13
83	70,612	10	1.42	1	0.14
84	66,857	3	0.45	0	0.00
85	55,038	0	0.00	0	0.00
86	45,909	3	0.65	2	0.44
87	38,316	1	0.26	0	0.00
88	32,805	3	0.91	0	0.00
89	24,390	2	0.82	1	0.41
90+	71,633	12	1.68	0	0.00

NOTE: 72 year old drinking drivers had the highest involvement rate in all crashes (2.47) and the 86 year old drinking drivers had the highest involvement rate in fatal crashes (.44).

* Does not include drivers of bicycles, mopeds, ATVs, or trains in "all crashes" and in "fatal crashes" categories on both tables.

TABLE 8 Drivers Killed or Injured By Residence and Gender

Residence	Male				Female				Unknown Gender			
	Killed	% Killed	Injured	% Injured	Killed	% Killed	Injured	% Injured	Killed	% Killed	Injured	% Injured
County of Crash	1,222	71.71	64,540	77.31	349	76.54	61,366	82.77	0	0.00	28	4.53
Non-Resident of County	371	21.77	13,963	16.73	86	18.86	10,150	13.69	0	0.00	3	0.49
Non-Resident of State	83	4.87	3,798	4.55	19	4.17	2,177	2.94	0	0.00	1	0.16
Foreign	5	0.29	414	0.50	1	0.22	192	0.26	0	0.00	0	0.00
Unknown	23	1.35	768	0.92	1	0.22	253	0.34	0	0.00	586	94.82
Total	1,704	100	83,483	100	456	100	74,138	100	0	0	618	100

TABLE 8A Drivers Killed or Injured By Residence

Residence	All Drivers Involved	% All	Drivers Killed	% Killed	Drivers Injured	% Injured
County of Crash	310,018	78.35	1,571	72.73	125,934	79.58
Non-Resident of County	62,437	15.78	457	21.16	24,116	15.24
Non-Resident of State	17,764	4.49	102	4.72	5,976	3.78
Foreign	2,003	0.51	6	0.28	606	0.38
Unknown	3,474	0.88	24	1.11	1,607	1.02
Total	395,696	100	2,160	100	158,239	100

TABLE 9 Drivers Killed or Injured By Age Groups

Age	All Drivers Involved	% All	Drivers Killed	% Killed	Drivers Injured	% Injured
Under 15	1,788	0.45	13	0.60	1,380	0.87
15	847	0.21	7	0.32	465	0.29
16	5,725	1.45	23	1.06	2,203	1.39
17	9,033	2.28	31	1.44	3,611	2.28
18	12,666	3.20	73	3.38	5,137	3.25
19	12,604	3.19	67	3.10	5,180	3.27
20	12,057	3.05	66	3.06	4,906	3.10
21 - 24	43,201	10.92	240	11.11	17,571	11.10
25 - 34	81,391	20.57	392	18.15	31,655	20.00
35 - 44	78,098	19.74	356	16.48	30,082	19.01
45 - 54	61,064	15.43	353	16.34	24,358	15.39
55 - 64	37,415	9.46	204	9.44	14,950	9.45
65 - 74	18,928	4.78	135	6.25	7,751	4.90
75 - 84	11,327	2.86	130	6.02	4,841	3.06
85+	2,789	0.70	54	2.50	1,221	0.77
Unknown	6,763	1.71	16	0.74	2,928	1.85
Total	395,696	100	2,160	100	158,239	100

* Includes bicycle drivers on all three tables.

Persons in Crashes by Age and Gender

2005 Florida Traffic Crash Statistics

TABLE 10

Persons Killed

Age Groups	Total Killed	Drivers*				Passengers				Pedestrians				Bicyclists				Motorcyclists			
		Total	Male	Female	Unk	Total	Male	Female	Unk	Total	Male	Female	Unk	Total	Male	Female	Unk	Total	Male	Female	Unk
0 - 4	45	0	0	0	0	36	14	22	0	8	5	3	0	1	1	0	0	0	0	0	0
5 - 9	48	1	1	0	0	34	21	13	0	11	4	7	0	2	1	1	0	0	0	0	0
10 - 14	41	4	4	0	0	23	14	9	0	9	8	1	0	5	3	2	0	0	0	0	0
15	24	5	5	0	0	13	7	6	0	4	2	2	0	2	2	0	0	0	0	0	0
16	55	19	13	6	0	27	16	11	0	5	2	3	0	2	2	0	0	2	2	0	0
17	65	27	18	9	0	30	20	10	0	4	4	0	0	1	1	0	0	3	3	0	0
18	118	57	46	11	0	40	17	23	0	5	5	0	0	3	2	1	0	13	13	0	0
19	117	53	44	9	0	42	24	18	0	8	3	5	0	3	3	0	0	11	10	1	0
20	89	53	38	15	0	18	10	8	0	5	4	1	0	0	0	0	0	13	13	0	0
21 - 24	366	170	138	32	0	79	49	30	0	47	42	5	0	7	7	0	0	63	63	0	0
25 - 34	552	285	216	69	0	97	54	43	0	63	42	21	0	14	12	2	0	93	90	3	0
35 - 44	546	239	178	61	0	81	41	40	0	109	74	35	0	21	17	4	0	96	92	4	0
45 - 54	527	244	178	66	0	73	31	42	0	101	77	24	0	30	27	3	0	79	77	2	0
55 - 64	316	146	95	51	0	52	13	39	0	60	51	9	0	13	12	1	0	45	43	2	0
65 - 74	219	114	77	37	0	38	8	30	0	46	34	12	0	7	7	0	0	14	13	1	0
75 - 84	228	120	75	45	0	44	23	21	0	54	37	17	0	4	4	0	0	6	5	1	0
85+	103	53	37	16	0	35	10	25	0	14	7	7	0	1	1	0	0	0	0	0	0
Unknown	74	10	9	1	0	35	28	7	0	23	19	4	0	3	3	0	0	3	3	0	0
Total	3,533	1,600	1,172	428	0	797	400	397	0	576	420	156	0	119	105	14	0	441	427	14	0

* Does not include bicycle or motorcycle drivers.

Persons in Crashes by Age and Gender

2005 Florida Traffic Crash Statistics

TABLE 11 **Persons Injured**

Age Groups	Total Injured	Drivers*				Passengers				Pedestrians				Bicyclists				Motorcyclists			
		Total	Male	Female	Unk	Total	Male	Female	Unk	Total	Male	Female	Unk	Total	Male	Female	Unk	Total	Male	Female	Unk
0 - 4	4,271	11	9	2	0	3,980	2,005	1,975	0	262	172	90	0	16	11	5	0	2	2	0	0
5 - 9	5,935	123	76	47	0	5,120	2,456	2,664	0	422	277	144	1	259	191	68	0	11	10	1	0
10 - 14	7,347	311	208	103	0	5,734	2,527	3,207	0	654	397	256	1	569	449	120	0	79	73	6	0
15	2,503	294	170	124	0	1,858	703	1,155	0	180	103	77	0	140	122	18	0	31	30	1	0
16	4,621	2,017	930	1,087	0	2,216	868	1,348	0	202	118	84	0	137	111	26	0	49	42	7	0
17	6,116	3,452	1,643	1,809	0	2,327	974	1,353	0	178	94	84	0	105	87	18	0	54	50	4	0
18	7,600	4,866	2,433	2,433	0	2,287	986	1,301	0	176	106	70	0	107	76	31	0	164	157	7	0
19	7,426	4,833	2,358	2,474	1	2,096	991	1,105	0	150	84	66	0	107	80	27	0	240	229	11	0
20	6,873	4,552	2,208	2,343	1	1,804	846	958	0	163	98	65	0	99	75	24	0	255	240	15	0
21 - 24	24,011	16,293	7,960	8,332	1	5,910	2,775	3,135	0	530	335	195	0	302	240	62	0	976	931	45	0
25 - 34	40,907	29,523	14,714	14,805	4	8,248	3,762	4,486	0	1,004	640	363	1	552	435	117	0	1,580	1,479	101	0
35 - 44	37,624	27,830	13,841	13,984	5	6,429	2,474	3,955	0	1,113	700	413	0	731	584	147	0	1,521	1,347	174	0
45 - 54	30,800	22,423	11,162	11,261	0	5,286	1,689	3,597	0	1,156	687	469	0	667	550	117	0	1,268	1,117	151	0
55 - 64	19,367	13,923	7,068	6,855	0	3,730	986	2,744	0	687	383	303	1	327	268	59	0	700	658	42	0
65 - 74	10,856	7,432	3,947	3,485	0	2,701	708	1,993	0	404	206	198	0	147	118	29	0	172	166	6	0
75 - 84	7,109	4,731	2,528	2,203	0	1,915	484	1,431	0	353	171	181	1	84	73	11	0	26	25	1	0
85+	1,948	1,198	658	540	0	598	180	418	0	129	67	62	0	20	16	4	0	3	3	0	0
Unknown	8,616	2,630	1,276	762	592	5,477	2,356	3,121	0	212	139	73	0	146	121	21	4	151	128	13	10
Total	233,930	146,442	73,189	72,649	604	67,716	27,770	39,946	0	7,975	4,777	3,193	5	4,515	3,607	904	4	7,282	6,687	585	10

* Does not include bicycle or motorcycle drivers.

Pedestrian Behavior

2005 Florida Traffic Crash Statistics

TABLE 12 Pedestrians Killed in Crashes By Age and Type of Actions

Age Group	Pedestrian Actions																				Total Killed		
	Cross Not at Intersection	%	Cross at Mid-Block Intersection	%	Cross at Intersection	%	Walk Along Road With Traffic	%	Walk Along Road Against Traffic	%	Working on Veh. in Road	%	Working in Road	%	Standing or Playing in Road	%	Standing in Pedestrian Island	%	All Other	%		Unk	%
0 - 4	3	1.10	0	0.00	0	0.00	0	0.00	0	0.00	0	0.00	0	0.00	1	3.03	0	0.00	4	3.54	0	0.00	8
5 - 9	2	0.74	0	0.00	2	2.63	0	0.00	0	0.00	0	0.00	0	0.00	1	3.03	0	0.00	4	3.54	2	9.52	11
10 - 14	2	0.74	0	0.00	2	2.63	1	2.56	0	0.00	0	0.00	0	0.00	0	0.00	0	0.00	4	3.54	0	0.00	9
15 - 19	8	2.94	0	0.00	5	6.58	5	12.82	0	0.00	1	33.33	0	0.00	2	6.06	0	0.00	4	3.54	1	4.76	26
20 - 24	28	10.29	0	0.00	5	6.58	7	17.95	1	10.00	0	0.00	0	0.00	2	6.06	0	0.00	7	6.19	2	9.52	52
25 - 34	34	12.50	0	0.00	2	2.63	5	12.82	1	10.00	0	0.00	0	0.00	4	12.12	0	0.00	13	11.50	4	19.05	63
35 - 44	51	18.75	1	12.50	6	7.89	10	25.64	3	30.00	1	33.33	0	0.00	9	27.27	0	0.00	26	23.01	2	9.52	109
45 - 54	54	19.85	2	25.00	13	17.11	7	17.95	0	0.00	0	0.00	1	100.00	5	15.15	0	0.00	15	13.27	4	19.05	101
55 - 64	34	12.50	0	0.00	9	11.84	1	2.56	1	10.00	0	0.00	0	0.00	1	3.03	0	0.00	14	12.39	0	0.00	60
65 - 74	20	7.35	1	12.50	10	13.16	0	0.00	0	0.00	1	33.33	0	0.00	4	12.12	0	0.00	8	7.08	2	9.52	46
75 - 84	22	8.09	2	25.00	15	19.74	1	2.56	2	20.00	0	0.00	0	0.00	2	6.06	0	0.00	8	7.08	2	9.52	54
85+	5	1.84	1	12.50	2	2.63	0	0.00	1	10.00	0	0.00	0	0.00	0	0.00	0	0.00	4	3.54	1	4.76	14
Unknown	9	3.31	1	12.50	5	6.58	2	5.13	1	10.00	0	0.00	0	0.00	2	6.06	0	0.00	2	1.77	1	4.76	23
Total	272	100	8	100	76	100	39	100	10	100	3	100	1	100	33	100	0	0	113	100	21	100	576

Pedestrian Behavior

2005 Florida Traffic Crash Statistics

TABLE 13 Pedestrians Injured in Crashes By Age and Type of Actions

Age Group	Pedestrian Actions																						Total Injured
	Cross Not at Intersection	%	Cross at Mid-Block Intersection	%	Cross at Intersection	%	Walk Along Road With Traffic	%	Walk Along Road Against Traffic	%	Working on Veh. in Road	%	Working in Road	%	Standing or Playing in Road	%	Standing in Pedestrian Island	%	All Other	%	Unk	%	
0 - 4	59	3.13	6	2.68	17	1.47	4	0.84	4	2.15	0	0.00	1	0.90	33	7.43	0	0.00	130	4.25	8	2.14	262
5 - 9	160	8.50	11	4.91	37	3.19	7	1.47	5	2.69	0	0.00	0	0.00	43	9.68	0	0.00	143	4.68	16	4.29	422
10 - 14	181	9.61	17	7.59	107	9.22	44	9.24	21	11.29	0	0.00	0	0.00	65	14.64	1	3.70	189	6.18	29	7.77	654
15 - 19	227	12.06	24	10.71	133	11.47	79	16.60	24	12.90	4	11.43	6	5.41	56	12.61	3	11.11	291	9.52	39	10.46	886
20 - 24	156	8.28	25	11.16	91	7.84	43	9.03	17	9.14	5	14.29	9	8.11	34	7.66	2	7.41	276	9.03	35	9.38	693
25 - 34	223	11.84	23	10.27	118	10.17	67	14.08	21	11.29	10	28.57	29	26.13	48	10.81	2	7.41	404	13.22	59	15.82	1,004
35 - 44	219	11.63	25	11.16	151	13.02	86	18.07	26	13.98	8	22.86	25	22.52	53	11.94	5	18.52	454	14.86	61	16.35	1,113
45 - 54	290	15.40	32	14.29	182	15.69	65	13.66	24	12.90	4	11.43	20	18.02	46	10.36	5	18.52	443	14.50	45	12.06	1,156
55 - 64	135	7.17	22	9.82	130	11.21	34	7.14	18	9.68	0	0.00	9	8.11	26	5.86	7	25.93	277	9.06	29	7.77	687
65 - 74	86	4.57	17	7.59	87	7.50	8	1.68	9	4.84	3	8.57	6	5.41	13	2.93	1	3.70	157	5.14	17	4.56	404
75 - 84	77	4.09	15	6.70	68	5.86	20	4.20	12	6.45	0	0.00	3	2.70	14	3.15	0	0.00	136	4.45	8	2.14	353
85+	16	0.85	5	2.23	14	1.21	8	1.68	1	0.54	0	0.00	0	0.00	1	0.23	0	0.00	77	2.52	7	1.88	129
Unknown	54	2.87	2	0.89	25	2.16	11	2.31	4	2.15	1	2.86	3	2.70	12	2.70	1	3.70	79	2.59	20	5.36	212
Total	1,883	100	224	100	1,160	100	476	100	186	100	35	100	111	100	444	100	27	100	3,056	100	373	100	7,975

TABLE 14 Pedestrians in Crashes By Age
and Percent Drinking

Age Group	Number Pedestrians	Number Drinking	Percent Drinking
0 - 4	285	1	0.35
5 - 9	453	2	0.44
10 - 14	696	6	0.86
15 - 19	977	31	3.17
20 - 24	796	126	15.83
25 - 29	584	82	14.04
30 - 34	571	94	16.46
35 - 39	631	110	17.43
40 - 44	693	151	21.79
45 - 49	737	142	19.27
50 - 54	591	112	18.95
55 - 59	466	67	14.38
60 - 64	325	36	11.08
65 - 69	276	12	4.35
70 - 74	197	8	4.06
75 - 79	236	9	3.81
80 - 84	186	1	0.54
85+	145	2	1.38
Unknown	296	49	16.55
Total	9,141	1,041	11.39

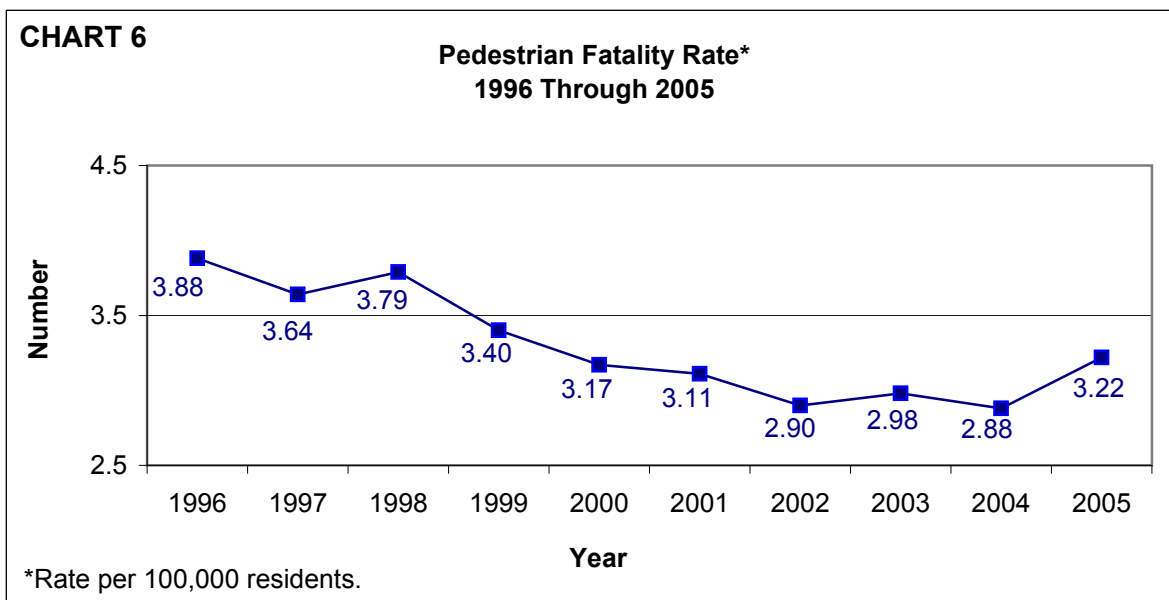
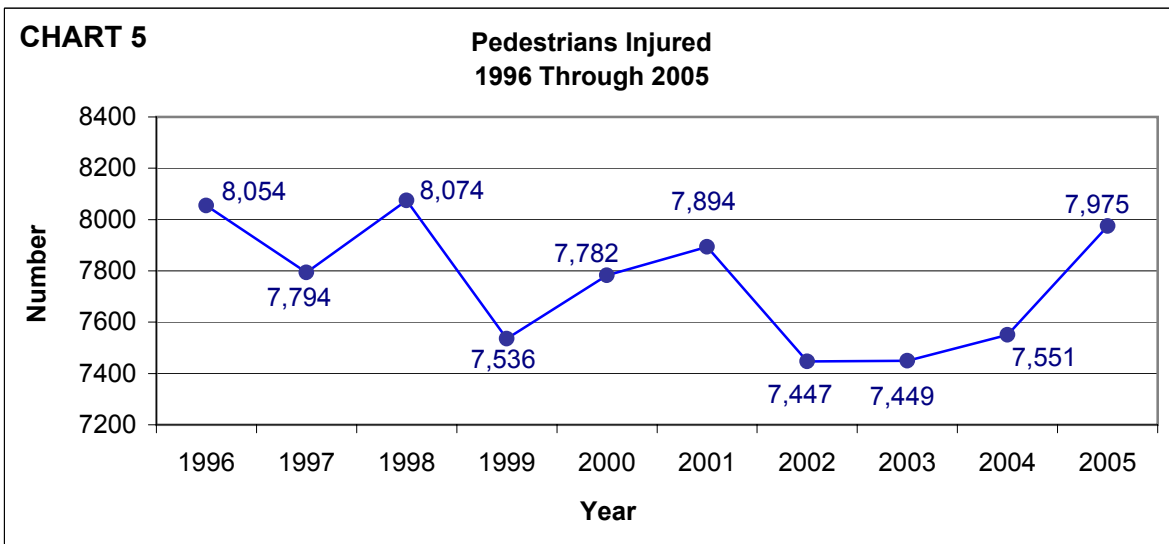
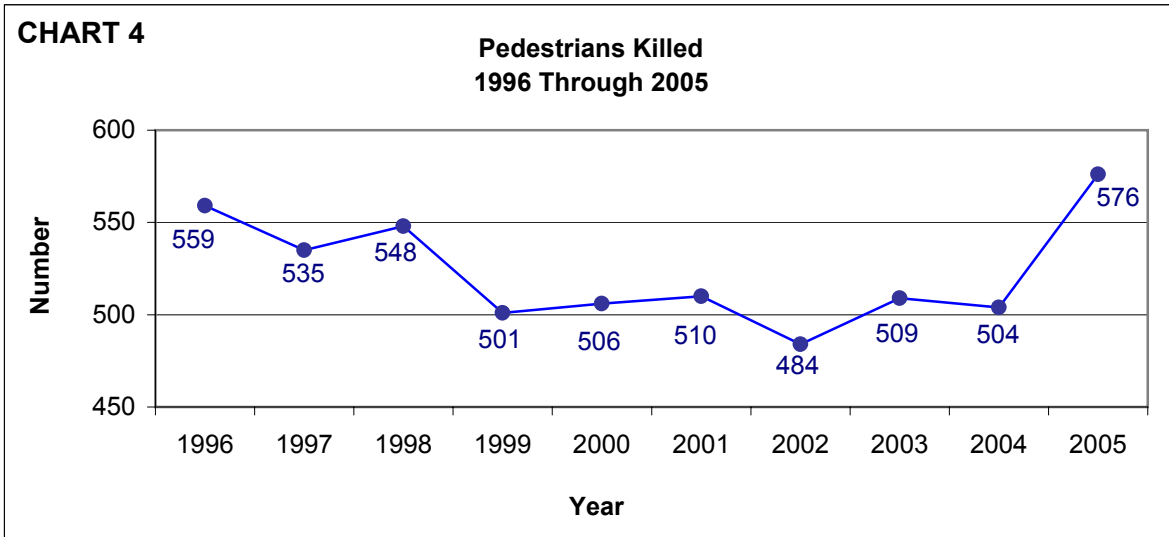
TABLE 15 Pedestrians in Crashes By Injury
Severity and Percent Drinking

Injury Severity	Number Pedestrians	Number Drinking	Percent Drinking
No Injury	563	45	7.99
Possible Injury	2,584	153	5.92
Non-Incapacitating Injury	3,496	306	8.75
Incapacitating Injury	1,895	305	16.09
Fatal Injury	576	226	39.24
Non-Traffic Fatality	24	5	20.83
Unknown	3	1	33.33
Total	9,141	1,041	11.39

NOTE: Drinking is a major problem with pedestrians in traffic crashes. 11.39% (1,041) of all pedestrians in crashes (9,141) had been drinking and 39.24% (226) of all pedestrians killed (576) had been drinking.

Pedestrian Crash Trend

2005 Florida Traffic Crash Statistics



Truck Passengers

2005 Florida Traffic Crash Statistics

TABLE 16 Passengers Riding in Beds of Trucks by Age and Truck Types

Age Groups	Light (Pickup) Trucks				All Types of Trucks*			
	Killed	%	Injured	%	Killed	%	Injured	%
0-4	0	0.00	6	2.54	0	0.00	6	2.26
5-9	0	0.00	17	7.20	0	0.00	17	6.42
10-14	0	0.00	22	9.32	0	0.00	22	8.30
15-19	3	21.43	59	25.00	3	20.00	60	22.64
20-24	4	28.57	28	11.86	4	26.67	29	10.94
25-34	0	0.00	36	15.25	1	6.67	44	16.60
35-44	4	28.57	25	10.59	4	26.67	31	11.70
45-54	3	21.43	15	6.36	3	20.00	24	9.06
55-64	0	0.00	6	2.54	0	0.00	8	3.02
65-74	0	0.00	2	0.85	0	0.00	3	1.13
75-84	0	0.00	1	0.42	0	0.00	1	0.38
85+	0	0.00	0	0.00	0	0.00	0	0.00
Unknown	0	0.00	19	8.05	0	0.00	20	7.55
TOTAL	14	100	236	100	15	100	265	100

* All Types of Trucks include light (pickup), medium, and heavy trucks. It does not include truck-tractor (cab).

Florida Motoring Environment

2005 Florida Traffic Crash Statistics

TABLE 17

Year	Licensed Drivers	Registered Vehicles ++	Vehicle Miles*	Crashes	Non-Fatal Injuries	Deaths	Mileage Death Rate**
1986	9,924,110	11,651,253	87,325	242,381	219,352	2,874	3.29
1987	10,241,063	11,738,273	92,865	240,429	215,886	2,891	3.11
1988	10,648,019	11,997,948	105,030	256,543	230,738	3,152	3.00
1989	11,109,288	12,276,272	108,876	252,439	230,060	3,033	2.79
1990	11,612,402	12,465,790	109,997	216,245	214,208	2,951	2.68
1991	12,170,821	11,184,146+	113,484	195,312	195,122	2,523	2.22
1992	11,550,126	11,205,298	114,000	196,176	205,432	2,480	2.18
1993	11,767,409	11,159,938	119,768	199,039	212,497	2,719	2.27
1994	11,992,578	11,393,982	120,929	206,183	223,458	2,722	2.25
1995	12,019,156	11,557,811	127,800	228,589	233,900	2,847	2.23
1996	12,343,598	12,003,930	129,637	241,377	243,320	2,806	2.16
1997	12,691,835	12,170,375	133,276	240,639	240,001	2,811	2.11
1998	13,012,132	11,277,808	136,680	245,440	241,863	2,889	2.11
1999	13,398,895	11,611,993	140,868	243,409	232,225	2,920	2.07
2000	14,041,846	11,948,485	149,857	246,541	231,588	2,999	2.00
2001	14,346,373	13,448,202	171,029	256,169	234,600	3,013	1.76
2002	14,604,720	12,989,278	178,680	250,470	229,611	3,143	1.76
2003	14,847,416	14,080,886	185,642	243,294	221,639	3,179	1.71
2004	15,007,005	14,512,264	196,722	252,902	227,192	3,257	1.66
2005	15,272,680	15,062,993	200,974	268,605	233,930	3,533	1.76

* In Millions

** Per 100 Million Vehicle Miles of Travel

+ Decrease Reflects Change in Accounting Method

++ Beginning in Year 1998, Does Not Include Count of Trailers with Tags

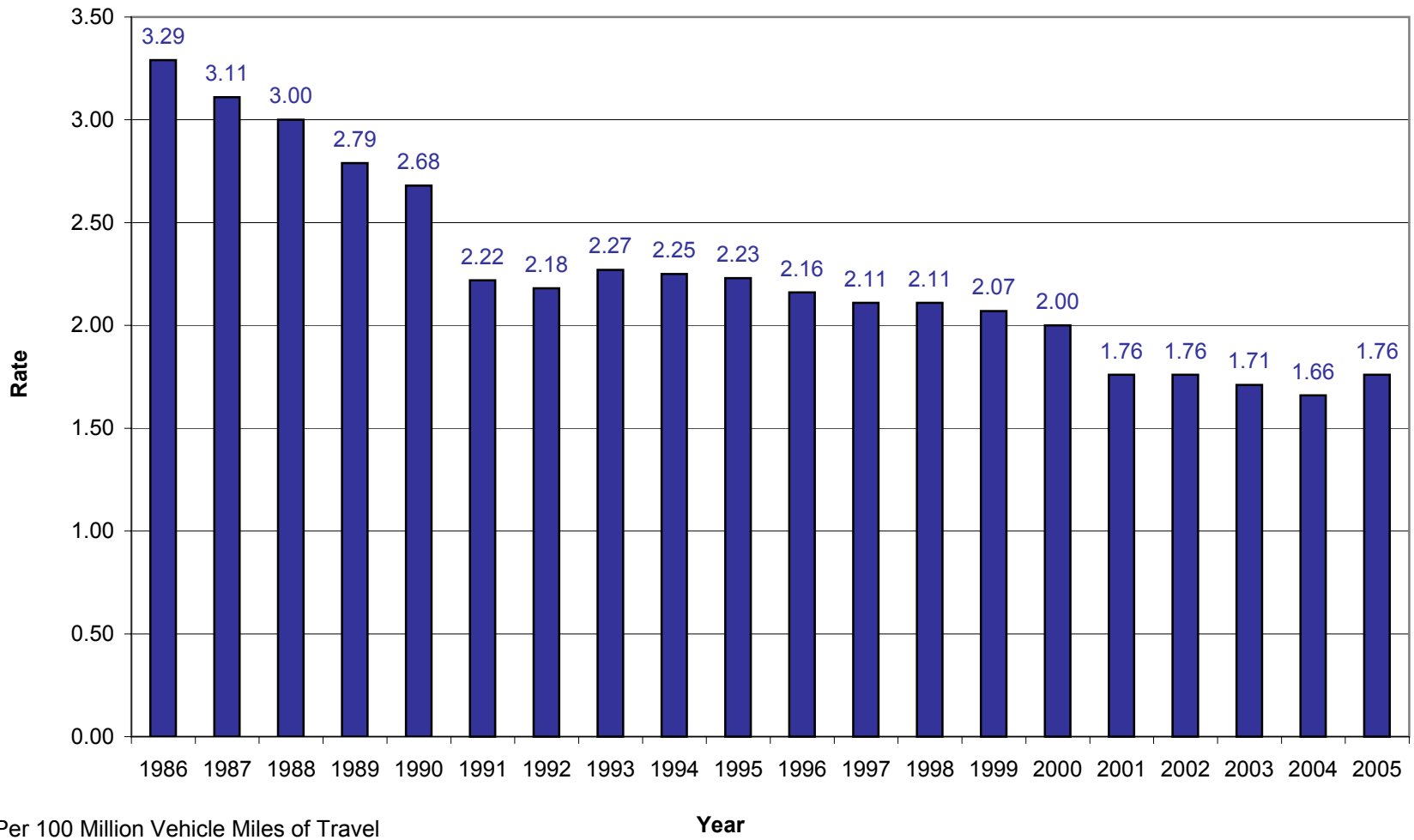
NOTE: All 1992 data in this publication has been updated from preliminary figures published in the *Department of Highway Safety and Motor Vehicles Traffic Crash Data, 1992*. Figures from the 1992 publication should not be used for year-to-year comparisons.

Mileage Death Rate

2005 Florida Traffic Crash Statistics

CHART 7

Mileage Death Rate*



Holiday Traffic Fatalities

2005 Florida Traffic Crash Statistics

TABLE 18

HOLIDAY PERIOD		2001	2002	2003	2004	2005
New Year	Hours	96	96	48	48	72
	Fatalities	30	33	20	25	38
	Rate*	0.31	0.34	0.42	0.52	0.53
	Alcohol Related Fatalities	10	7	11	11	14
Memorial Day	Hours	96	96	96	96	96
	Fatalities	45	30	46	41	44
	Rate*	0.47	0.31	0.48	0.43	0.46
	Alcohol Related Fatalities	20	8	24	17	15
Independence Day	Hours	48	48	96	96	96
	Fatalities	20	7	30	42	31
	Rate*	0.42	0.15	0.31	0.44	0.32
	Alcohol Related Fatalities	12	4	14	14	13
Labor Day	Hours	96	96	96	96	96
	Fatalities	22	42	36	23	44
	Rate*	0.23	0.44	0.38	0.24	0.46
	Alcohol Related Fatalities	8	18	17	7	23
Thanksgiving	Hours	120	120	120	120	120
	Fatalities	36	49	48	55	66
	Rate*	0.30	0.41	0.40	0.46	0.55
	Alcohol Related Fatalities	17	22	14	24	30
Christmas	Hours	96	48	48	72	96
	Fatalities	42	19	18	33	40
	Rate*	0.44	0.40	0.38	0.46	0.42
	Alcohol Related Fatalities	14	3	4	15	15
All Days in Year	Hours	8,760	8,760	8,760	8,784	8,760
	Fatalities	3,013	3,143	3,179	3,257	3,533
	Rate*	0.34	0.36	0.36	0.37	0.40
	Alcohol Related Fatalities	1,000	1,007	1,096	1,093	1,239

* Fatalities Per Hour

NOTE: Thanksgiving 2005 Holiday experienced the highest fatality rate per hour (0.55) with 66 people killed in the 120 hour holiday period. 45.5% (30) of these fatalities had alcohol involved in the crash.

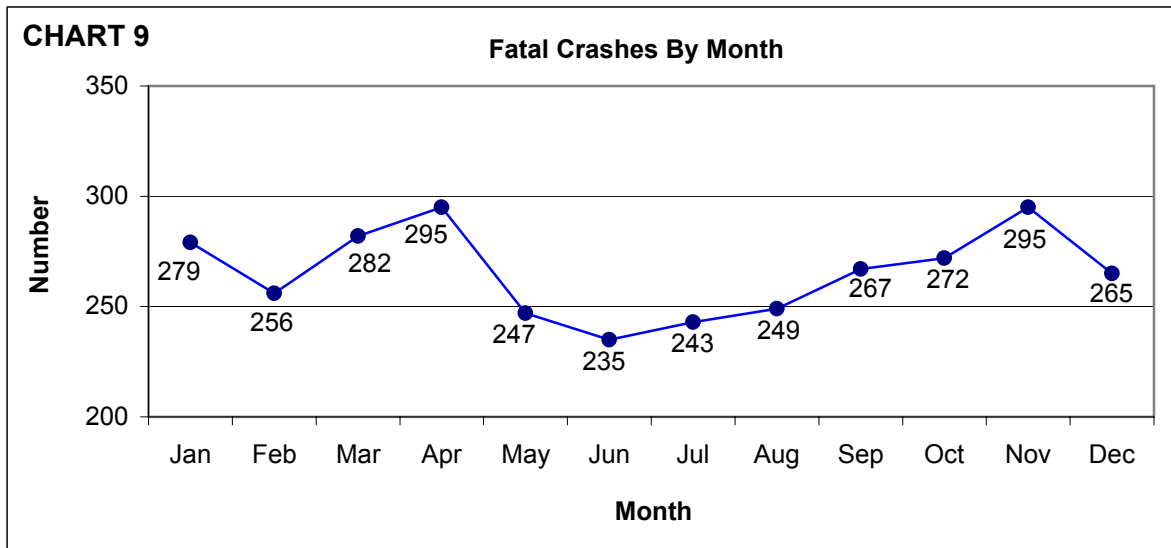
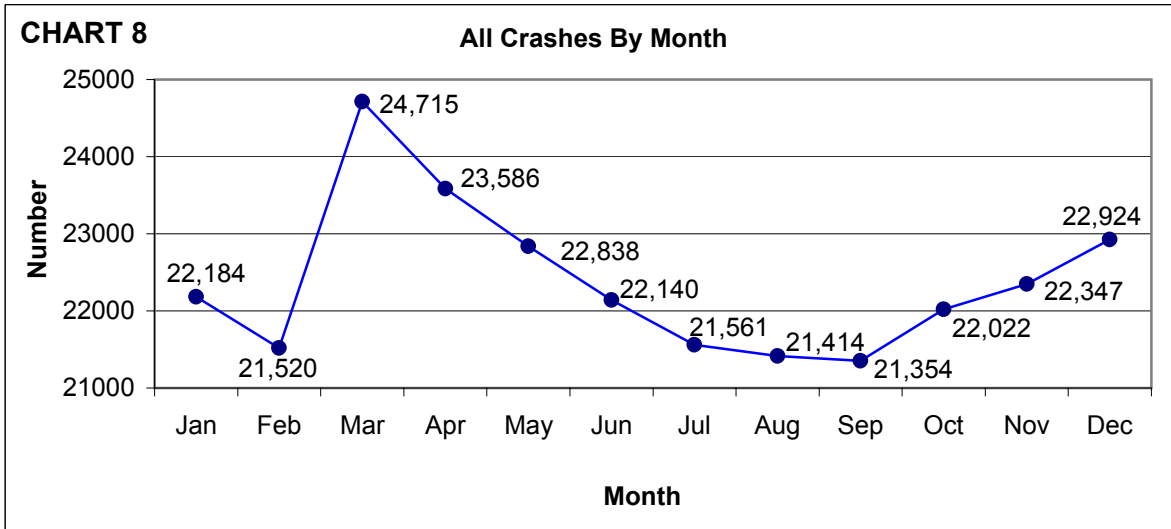
Traffic Crashes by Day of Week/Time of Day

2005 Florida Traffic Crash Statistics

TABLE 19
Motor Vehicle Crashes by Day of Week and Time of Day

Time of Crash Hour Beginning	Total		Monday		Tuesday		Wednesday		Thursday		Friday		Saturday		Sunday		
	All	Fatal	All	Fatal	All	Fatal	All	Fatal	All	Fatal	All	Fatal	All	Fatal	All	Fatal	
Before noon	Midnight	6,865	142	780	15	615	12	678	17	802	12	888	21	1,592	31	1,510	34
	1:00	5,596	145	508	9	453	11	486	14	604	20	734	20	1,462	29	1,349	42
	2:00	5,690	147	510	15	454	11	431	5	554	14	746	19	1,567	43	1,428	40
	3:00	4,247	97	400	9	295	6	295	5	391	11	551	15	1,168	22	1,147	29
	4:00	3,317	75	340	6	311	9	278	8	305	5	429	8	795	25	859	14
	5:00	3,767	95	416	8	419	14	438	14	500	16	536	9	752	21	706	13
	6:00	6,994	111	1,040	20	1,213	23	1,201	14	1,074	19	1,174	13	758	11	534	11
	7:00	11,171	90	1,841	15	1,984	9	1,989	19	2,035	11	1,866	15	832	10	624	11
	8:00	11,658	75	1,893	13	2,159	9	2,041	12	1,994	13	1,877	7	1,006	11	688	10
	9:00	10,178	96	1,554	10	1,665	12	1,665	14	1,552	17	1,600	21	1,274	8	868	14
	10:00	10,705	100	1,603	17	1,650	9	1,599	13	1,511	13	1,728	16	1,532	17	1,082	15
11:00	12,110	113	1,790	16	1,777	14	1,715	20	1,698	21	1,985	11	1,816	17	1,329	14	
After noon	Noon	14,279	126	1,991	14	2,174	6	2,036	24	2,111	22	2,289	18	2,139	21	1,539	21
	1:00	14,642	124	2,139	10	2,094	20	2,139	17	2,149	13	2,382	24	2,092	18	1,647	22
	2:00	16,638	148	2,472	21	2,473	28	2,402	15	2,391	20	2,800	22	2,310	18	1,790	24
	3:00	18,879	161	2,771	27	2,832	27	2,822	15	2,827	23	3,332	29	2,390	25	1,905	15
	4:00	19,553	146	2,922	23	3,003	30	2,960	17	2,924	11	3,428	16	2,405	19	1,911	30
	5:00	19,774	146	3,055	25	3,154	21	3,072	14	3,081	16	3,332	18	2,179	23	1,901	29
	6:00	16,843	178	2,449	34	2,410	23	2,417	14	2,503	22	2,849	17	2,185	33	2,030	35
	7:00	13,080	183	1,627	29	1,736	13	1,738	19	1,874	23	2,220	20	2,099	43	1,786	36
	8:00	11,199	195	1,427	21	1,437	20	1,538	26	1,523	23	1,868	30	1,838	43	1,568	32
	9:00	10,339	169	1,273	22	1,264	22	1,366	16	1,436	27	1,779	24	1,846	26	1,375	32
	10:00	9,142	156	1,016	16	1,025	10	1,077	22	1,244	17	1,830	31	1,780	32	1,170	28
	11:00	7,680	144	743	11	780	12	866	20	981	23	1,606	20	1,700	32	1,004	26
	Not Stated	4,259	23	596	2	560	3	555	1	543	5	653	5	699	2	653	5
Total	268,605	3,185	37,156	408	37,937	374	37,804	375	38,607	417	44,482	449	40,216	580	32,403	582	

NOTE: Friday, during the 4 p.m. hour, had the highest number of all types of crashes (3,428). Saturday had three different times with 43 fatal crashes which is the highest number of fatal crashes in Florida. The times are Saturday, 2 a.m.; 7 p.m.; and 8 p.m. Sunday, during the 1 a.m. hour, was second with 42 fatal crashes.



Contributing Causes*

2005 Florida Traffic Crash Statistics

TABLE 20 Contributing Causes of Drivers in Crashes

Contributing Cause	Type of Crash					
	Fatal	%	Injury	%	Vehicle and/or Property Damage Only	%
Careless Driving	1,066	26.04	56,739	37.20	18,611	36.13
Failed/Yield Right-of-Way	471	11.51	28,633	18.77	6,946	13.49
Improper Backing	7	0.17	1,658	1.09	1,176	2.28
Improper Lane Change	81	1.98	4,521	2.96	1,861	3.61
Improper Turn	64	1.56	5,129	3.36	1,628	3.16
Alcohol-Under Influence	513	12.53	3,791	2.49	3,673	7.13
Drugs-Under Influence	157	3.84	311	0.20	253	0.49
Alcohol & Drugs-Under Influence	160	3.91	572	0.38	558	1.08
Followed Too Closely	8	0.20	6,384	4.19	2,103	4.08
Disregarded Traffic Signal	96	2.35	6,300	4.13	1,399	2.72
Exceeded Safe Speed Limit	308	7.53	4,086	2.68	1,285	2.49
Exceeded Stated Speed Limit	73	1.78	2,749	1.80	685	1.33
Disregarded Stop Sign	39	0.95	1,494	0.98	652	1.27
Failed to Maintain Equipment	48	1.17	766	0.50	252	0.49
Improper Passing	148	3.62	1,219	0.80	348	0.68
Drove Left of Center	199	4.86	1,085	0.71	225	0.44
Obstructing Traffic	15	0.37	377	0.25	143	0.28
Improper Load	4	0.10	159	0.10	104	0.20
Disregard Other Traffic Control	11	0.27	490	0.32	161	0.31
Driving Wrong Side/Way	55	1.34	869	0.57	206	0.40
Fleeing Police	13	0.32	322	0.21	214	0.42
Vehicle Modified	0	0.00	28	0.02	4	0.01
Driver Distraction	18	0.44	1,527	1.00	480	0.93
All Other	539	13.17	23,299	15.28	8,539	16.58
Total	4,093	100	152,508	100	51,506	100

* This table lists contributing causes reported by the investigating officer for drivers in traffic crashes. There can be up to three contributing causes per driver.

Environmental Causes

2005 Florida Traffic Crash Statistics

TABLE 21 **Lighting Conditions at the Time of Crash**

Lighting Conditions	All Crashes	Fatal Crashes	Injury Crashes	Vehicle and/or Property Damage Only Crashes
Daylight	171,505	1,418	101,596	68,491
Dusk	7,332	86	4,003	3,243
Dawn	3,717	63	2,058	1,596
Darkness	81,445	1,596	39,247	40,602
Unknown	4,606	22	975	3,609
Total	268,605	3,185	147,879	117,541

TABLE 22 **Road Surface Conditions at the Time of Crash**

Surface Conditions	All Crashes	Fatal Crashes	Injury Crashes	Vehicle and/or Property Damage Only Crashes
Dry	223,504	2,733	123,315	97,456
Wet	39,809	412	22,482	16,915
Slippery	1,509	18	890	601
Icy	66	0	30	36
Other	3,717	22	1,162	2,533
Total	268,605	3,185	147,879	117,541

Vehicle Harmful Events*

2005 Florida Traffic Crash Statistics

TABLE 23

Vehicle Harmful Events	Type of Crash					
	Fatal	%	Injury	%	Vehicle and/or Property Damage Only	%
Collision With MV in Transport (Rear-end)	459	6.44	76,369	25.23	26,104	20.74
Collision With MV in Transport (Head-on)	434	6.09	8,457	2.79	2,439	1.94
Collision With MV in Transport (Angle)	1,223	17.17	49,362	16.31	16,144	12.83
Collision With MV in Transport (Left Turn)	313	4.39	20,047	6.62	5,750	4.57
Collision With MV in Transport (Right Turn)	16	0.22	2,361	0.78	1,467	1.17
Collision With MV in Transport (Sideswipe)	181	2.54	11,031	3.64	8,912	7.08
Collision With MV in Transport (Backed Into)	5	0.07	1,612	0.53	2,105	1.67
Collision With Parked Car	52	0.73	2,436	0.80	1,985	1.58
Collision With MV on Other Roadway	91	1.28	8,648	2.86	3,581	2.85
Collision With Pedestrian	472	6.63	4,781	1.58	70	0.06
Collision With Bicycle	119	1.67	3,699	1.22	190	0.15
Collision With Moped	4	0.06	166	0.05	19	0.02
Collision With Train	6	0.08	28	0.01	35	0.03
Collision With Animal	4	0.06	316	0.10	212	0.17
Collision With Fixed Object	1,257	17.64	25,724	8.50	12,082	9.60
Collision With Moveable Object On Road	37	0.52	995	0.33	1,279	1.02
Collision With Fixed Object Above Road	43	0.60	1,328	0.44	757	0.60
Ran Into Ditch/Culvert	231	3.24	4,831	1.60	2,018	1.60
Ran Off Road Into Water	89	1.25	796	0.26	501	0.40
Overtuned	817	11.47	9,973	3.29	1,812	1.44
Occupant Fell from Vehicle	211	2.96	2,184	0.72	57	0.05
Tractor/Trailer Jackknifed	10	0.14	183	0.06	224	0.18
Fire	99	1.39	207	0.07	249	0.20
Explosion	2	0.03	5	0.00	2	0.00
Downhill Runaway	0	0.00	17	0.01	6	0.00
Cargo Loss or Shift	8	0.11	191	0.06	202	0.16
Separation of Units	5	0.07	86	0.03	79	0.06
Median Crossover	61	0.86	747	0.25	273	0.22
All Other	875	12.28	66,148	21.85	37,304	29.64
Total	7,124	100	302,728	100	125,858	100

* This table lists harmful events reported by the investigating officer for vehicles in traffic crashes. There can be up to four harmful events per vehicle.

Vehicle and Truck Information

2005 Florida Traffic Crash Statistics

TABLE 24 Vehicle Types Involved in Crashes*

Vehicle Type	All Crashes	Fatal Crashes	Injury Crashes	Vehicle and/or Property Damage Only Crashes
Automobile	251,800	2,470	173,011	76,319
Passenger Van	29,927	319	21,214	8,394
Light Truck (2 rear tires)	73,020	1,030	50,026	21,964
Medium Truck (4 rear tires)	5,637	115	3,628	1,894
Heavy Truck	5,739	171	3,358	2,210
Truck-Tractor (Cab)	5,506	158	3,035	2,313
Motor Home (RV)	243	7	136	100
Bus (driver + seats for 9-15)	452	6	261	185
Bus (driver + seats for over 15)	2,288	24	1,341	923
Bicycle	4,959	122	4,573	264
Motorcycle	8,430	498	7,524	408
Moped	754	9	713	32
All Terrain Vehicle	721	24	640	57
Train	50	6	16	28
Low Speed Vehicle	151	3	124	24
Other	5,825	47	3,740	2,038
Unknown Vehicle Type	194	2	192	0
Total	395,696	5,011	273,532	117,153

* This table lists the vehicle types and the number of vehicles within each type, that were involved in crashes, by type of crash. For clarification purposes, there were 5,011 vehicles involved in fatal crashes, not 5,011 fatal crashes or fatalities. For example, if one passenger van and one motorcycle were in the same fatal crash, then one passenger van is counted in the 319 passenger vans in fatal crashes and one motorcycle is counted in the 498 motorcycles in fatal crashes. It does not mean 319 people were killed in passenger vans and 498 people were killed on motorcycles.

Vehicle and Truck Information

2005 Florida Traffic Crash Statistics

TABLE 25 Contributing Causes of Drivers in Truck Crashes*

Contributing Cause	Type of Truck**			
	Light Truck	Medium Truck	Heavy Truck	Truck Tractor (Cab)
Careless Driving	15,490	1,097	1,184	1,073
Failed/Yield Right-of-Way	6,081	407	282	244
Improper Backing	648	140	135	83
Improper Lane Change	1,019	134	174	227
Improper Turn	1,235	90	107	162
Alcohol-Under Influence	2,133	60	13	12
Drugs-Under Influence	172	5	3	1
Alcohol & Drugs-Under Influence	330	11	1	1
Followed Too Closely	1,725	145	125	75
Disregarded Traffic Signal	1,360	77	85	48
Exceeded Safe Speed Limit	1,147	57	87	81
Exceeded Stated Speed Limit	611	36	20	13
Disregarded Stop Sign	438	64	121	67
Failed to Maintain Equipment	206	11	16	12
Improper Passing	403	22	24	18
Drove Left of Center	275	13	3	3
Obstructing Traffic	86	12	16	13
Improper Load	124	15	34	35
Disregard Other Traffic Control	100	9	8	12
Driving Wrong Side/Way	162	8	8	1
Fleeing Police	112	4	1	3
Vehicle Modified	9	1	0	0
Driver Distraction	439	17	16	16
All Other	5,490	574	580	466
Total	39,795	3,009	3,043	2,666

* This table lists contributing causes reported by the investigating officer for drivers in traffic crashes. There can be up to three contributing causes per driver.

** Type of Truck	Description
Light Truck/Pickup	2 rear tires
Medium Truck	4 rear tires
Heavy Truck	2 or more rear axles
Truck Tractor	Cab - Bobtail

County Data

2005 Florida Traffic Crash Statistics

TABLE 26

5 YEAR CRASH HISTORY BY COUNTY

COUNTY	2001	2002	2003	2004	2005	COUNTY	2001	2002	2003	2004	2005
ALACHUA	4,007	4,140	3,937	3,928	4,301	LEVY	412	407	416	444	517
BAKER	240	234	220	270	286	LIBERTY	55	70	65	64	69
BAY	1,996	2,296	2,223	2,503	2,559	MADISON	222	244	234	239	318
BRADFORD	353	306	341	267	341	MANATEE	3,640	3,537	3,700	3,777	3,987
BREVARD	4,672	4,515	4,562	4,532	4,754	MARION	2,979	3,320	3,476	3,512	4,483
BROWARD	28,262	27,096	26,444	26,627	27,399	MARTIN	1,637	1,725	1,659	1,789	1,801
CALHOUN	113	105	98	99	105	MIAMI-DADE	54,519	49,922	45,731	46,166	48,537
CHARLOTTE	1,661	1,702	1,818	2,053	2,182	MONROE	1,608	1,649	1,610	1,548	1,473
CITRUS	1,064	860	809	1,091	968	NASSAU	580	581	460	496	599
CLAY	1,289	1,863	1,762	1,880	1,486	OKALOOSA	2,025	2,048	2,074	2,174	2,190
COLLIER	3,003	2,901	2,737	2,738	2,912	OKEECHOBEE	308	373	406	363	394
COLUMBIA	806	828	801	861	667	ORANGE	16,003	14,918	14,654	15,893	17,843
DE SOTO	356	295	303	391	367	OSCEOLA	2,304	2,081	1,973	2,950	3,020
DIXIE	129	143	182	136	153	PALM BEACH	15,731	14,906	15,409	15,778	16,526
DUVAL	14,852	15,099	13,435	14,116	15,761	PASCO	3,806	3,956	3,999	5,634	6,048
ESCAMBIA	3,828	3,944	4,296	4,377	5,290	PINELLAS	14,776	14,019	13,550	13,823	14,194
FLAGLER	326	460	508	609	805	POLK	6,553	6,606	6,635	7,522	7,948
FRANKLIN	103	126	107	95	93	PUTNAM	998	918	855	944	1,024
GADSDEN	696	647	704	711	650	ST. JOHNS	1,532	1,562	1,870	1,660	1,850
GILCHRIST	152	146	183	167	140	ST. LUCIE	2,229	2,093	2,074	2,409	2,914
GLADES	142	112	115	120	118	SANTA ROSA	1,157	1,184	1,259	1,402	1,543
GULF	88	119	97	96	90	SARASOTA	3,687	3,724	3,631	3,507	3,809
HAMILTON	137	156	148	159	114	SEMINOLE	3,188	2,980	2,972	2,945	3,228
HARDEE	330	297	268	285	376	SUMTER	509	528	547	687	659
HENDRY	303	332	355	351	399	SUWANNEE	379	416	389	417	347
HERNANDO	1,285	1,361	1,292	1,460	1,592	TAYLOR	219	246	242	244	235
HIGHLANDS	699	732	770	826	854	UNION	116	90	90	92	85
HILLSBOROUGH	20,604	21,609	21,242	21,722	23,329	VOLUSIA	6,621	6,570	6,244	6,332	6,524
HOLMES	143	126	147	128	149	WAKULLA	224	251	255	186	199
INDIAN RIVER	1,479	1,435	1,375	1,445	1,522	WALTON	519	516	567	628	684
JACKSON	504	521	523	513	605	WASHINGTON	204	188	174	218	238
JEFFERSON	188	162	131	153	166	UNKNOWN	8	0	2	9	27
LAFAYETTE	51	59	59	57	59	STATEWIDE	256,169	250,470	243,294	252,902	268,605
LAKE	2,331	2,390	2,409	2,497	2,642						
LEE	5,525	5,634	5,963	5,834	6,237						
LEON	5,704	6,091	5,708	5,953	5,821						

County Data

2005 Florida Traffic Crash Statistics

TABLE 27 5 YEAR ALCOHOL-RELATED CRASH HISTORY BY COUNTY

COUNTY	2001	2002	2003	2004	2005	COUNTY	2001	2002	2003	2004	2005
ALACHUA	381	355	339	349	359	LEVY	73	47	66	59	65
BAKER	38	33	34	40	31	LIBERTY	14	12	20	10	12
BAY	363	371	380	447	438	MADISON	25	26	32	23	37
BRADFORD	48	27	52	27	30	MANATEE	560	421	442	488	529
BREVARD	729	673	686	627	684	MARION	313	278	315	309	289
BROWARD	2,026	1,619	1,821	1,773	1,759	MARTIN	237	247	241	233	275
CALHOUN	32	20	15	22	18	MIAMI-DADE	2,314	1,876	2,027	1,915	2,117
CHARLOTTE	203	181	191	211	209	MONROE	264	244	267	282	258
CITRUS	153	141	125	152	147	NASSAU	94	80	90	77	104
CLAY	180	201	203	210	197	OKALOOSA	321	324	352	340	379
COLLIER	472	426	413	431	411	OKEECHOBEE	57	62	70	61	64
COLUMBIA	117	122	113	133	98	ORANGE	1,382	1,052	1,193	1,287	1,353
DE SOTO	58	37	31	56	46	OSCEOLA	244	194	182	246	254
DIXIE	28	23	34	28	32	PALM BEACH	1,439	1,283	1,415	1,339	1,419
DUVAL	1,298	1,177	1,159	1,245	1,300	PASCO	506	483	516	581	588
ESCAMBIA	486	515	602	536	674	PINELLAS	1,802	1,560	1,631	1,610	1,631
FLAGLER	52	49	68	78	108	POLK	660	577	597	649	711
FRANKLIN	27	38	29	33	26	PUTNAM	160	109	128	141	120
GADSDEN	111	92	89	104	85	ST. JOHNS	230	199	248	227	285
GILCHRIST	31	23	37	25	21	ST. LUCIE	237	239	238	263	322
GLADES	22	17	16	20	22	SANTA ROSA	142	143	135	159	165
GULF	20	24	20	21	21	SARASOTA	565	478	493	452	506
HAMILTON	17	27	18	28	12	SEMINOLE	373	321	412	437	439
HARDEE	28	26	33	31	37	SUMTER	64	56	44	69	59
HENDRY	47	52	45	56	52	SUWANNEE	62	55	59	64	67
HERNANDO	186	183	174	202	204	TAYLOR	36	43	36	43	34
HIGHLANDS	81	86	79	82	98	UNION	22	12	16	12	14
HILLSBOROUGH	2,112	1,939	1,986	1,976	1,939	VOLUSIA	792	736	738	739	745
HOLMES	27	24	18	30	20	WAKULLA	62	58	66	51	36
INDIAN RIVER	163	144	144	144	174	WALTON	69	85	88	98	107
JACKSON	66	82	79	84	65	WASHINGTON	29	31	28	35	35
JEFFERSON	23	28	12	16	24	UNKNOWN	0	0	0	2	4
LAFAYETTE	6	11	13	6	15	STATEWIDE	24,411	21,533	22,752	23,013	23,864
LAKE	271	281	271	288	293						
LEE	806	686	800	765	756						
LEON	555	469	438	436	436						

County Data

2005 Florida Traffic Crash Statistics

TABLE 28

5 YEAR FATALITY HISTORY BY COUNTY

COUNTY	2001	2002	2003	2004	2005	COUNTY	2001	2002	2003	2004	2005
ALACHUA	50	35	29	50	36	LEVY	16	13	15	14	29
BAKER	6	13	12	5	11	LIBERTY	1	2	7	1	1
BAY	34	26	38	37	33	MADISON	11	10	8	10	15
BRADFORD	7	7	14	2	8	MANATEE	59	43	77	61	70
BREVARD	79	113	87	80	94	MARION	86	82	115	87	105
BROWARD	199	184	185	202	263	MARTIN	23	32	33	50	26
CALHOUN	6	1	5	6	6	MIAMI-DADE	313	353	325	318	336
CHARLOTTE	20	24	19	37	45	MONROE	23	19	26	30	23
CITRUS	21	33	32	38	26	NASSAU	20	11	14	11	13
CLAY	18	20	17	30	32	OKALOOSA	29	36	27	8	39
COLLIER	66	64	79	57	55	OKEECHOBEE	16	12	21	14	20
COLUMBIA	21	29	32	32	29	ORANGE	169	164	169	186	194
DE SOTO	10	13	11	14	18	OSCEOLA	52	74	56	74	68
DIXIE	7	4	8	4	11	PALM BEACH	197	198	208	178	195
DUVAL	119	118	122	131	156	PASCO	102	97	83	78	83
ESCAMBIA	47	45	42	50	70	PINELLAS	100	119	103	118	107
FLAGLER	16	16	17	20	20	POLK	111	127	116	142	143
FRANKLIN	2	5	5	3	2	PUTNAM	24	27	24	25	22
GADSDEN	23	13	19	25	28	ST. JOHNS	30	36	31	39	42
GILCHRIST	3	6	8	6	4	ST. LUCIE	58	48	42	46	53
GLADES	9	8	6	10	4	SANTA ROSA	15	21	38	21	19
GULF	4	2	6	4	2	SARASOTA	41	48	71	53	58
HAMILTON	3	13	10	15	3	SEMINOLE	44	33	24	62	39
HARDEE	19	9	9	10	9	SUMTER	19	27	13	22	22
HENDRY	19	16	13	26	30	SUWANNEE	10	23	14	19	26
HERNANDO	25	25	34	45	31	TAYLOR	5	7	8	5	6
HIGHLANDS	21	35	21	20	33	UNION	3	4	4	4	3
HILLSBOROUGH	177	223	198	189	207	VOLUSIA	96	112	91	131	134
HOLMES	7	10	7	5	3	WAKULLA	5	4	9	2	4
INDIAN RIVER	32	28	42	41	32	WALTON	15	17	20	22	31
JACKSON	22	17	24	21	16	WASHINGTON	18	7	3	9	13
JEFFERSON	9	11	4	9	8	UNKNOWN	0	0	0	0	0
LAFAYETTE	2	2	0	1	2	STATEWIDE	3,013	3,143	3,179	3,257	3,533
LAKE	61	71	72	67	75						
LEE	113	71	121	108	150						
LEON	25	27	36	17	42						

TABLE 29 5 YEAR ALCOHOL-RELATED FATALITY HISTORY BY COUNTY

COUNTY	2001	2002	2003	2004	2005	COUNTY	2001	2002	2003	2004	2005
ALACHUA	17	9	12	12	14	LEVY	6	9	4	4	11
BAKER	5	4	9	1	2	LIBERTY	1	1	6	0	0
BAY	15	8	15	23	19	MADISON	7	3	1	1	7
BRADFORD	5	4	8	1	6	MANATEE	27	12	24	19	27
BREVARD	31	35	36	30	33	MARION	38	33	49	29	38
BROWARD	52	29	59	53	78	MARTIN	2	10	6	14	11
CALHOUN	4	0	2	2	1	MIAMI-DADE	70	84	78	78	74
CHARLOTTE	7	4	6	15	20	MONROE	10	10	6	16	12
CITRUS	7	7	7	13	10	NASSAU	7	4	12	4	6
CLAY	4	5	7	17	14	OKALOOSA	6	14	12	2	12
COLLIER	17	16	21	13	17	OKEECHOBEE	4	6	11	5	6
COLUMBIA	9	8	10	8	10	ORANGE	65	64	66	74	75
DE SOTO	5	4	7	8	11	OSCEOLA	16	28	23	17	25
DIXIE	4	3	4	2	4	PALM BEACH	58	58	54	62	67
DUVAL	50	38	35	49	67	PASCO	34	33	33	33	30
ESCAMBIA	24	17	20	22	22	PINELLAS	33	51	37	48	39
FLAGLER	7	8	8	5	3	POLK	31	38	36	40	49
FRANKLIN	2	1	2	3	1	PUTNAM	11	11	11	8	11
GADSDEN	10	5	7	6	17	ST. JOHNS	5	17	9	11	16
GILCHRIST	2	3	1	1	3	ST. LUCIE	16	14	13	4	12
GLADES	6	6	3	3	2	SANTA ROSA	6	11	10	7	8
GULF	3	1	5	0	2	SARASOTA	13	16	34	20	15
HAMILTON	0	2	5	8	2	SEMINOLE	12	3	12	24	15
HARDEE	3	1	3	5	5	SUMTER	4	6	2	8	3
HENDRY	11	9	5	8	7	SUWANNEE	6	5	8	5	11
HERNANDO	3	3	7	9	9	TAYLOR	1	2	3	2	2
HIGHLANDS	10	10	7	4	16	UNION	1	1	1	1	1
HILLSBOROUGH	62	79	73	75	59	VOLUSIA	30	48	42	60	55
HOLMES	4	5	2	3	0	WAKULLA	3	1	5	2	2
INDIAN RIVER	11	6	9	10	13	WALTON	5	10	8	8	10
JACKSON	7	7	7	8	5	WASHINGTON	2	4	2	2	5
JEFFERSON	0	3	2	4	5	UNKNOWN	0	0	0	0	0
LAFAYETTE	2	0	0	0	1	STATEWIDE	1,000	1,007	1,096	1,093	1,239
LAKE	21	27	20	24	31						
LEE	42	24	42	32	54						
LEON	8	9	12	8	21						

County Data

2005 Florida Traffic Crash Statistics

TABLE 30

5 YEAR INJURY HISTORY BY COUNTY

COUNTY	2001	2002	2003	2004	2005	COUNTY	2001	2002	2003	2004	2005
ALACHUA	3,176	3,164	2,955	2,814	2,991	LEVY	472	437	455	523	571
BAKER	265	266	251	260	328	LIBERTY	70	91	68	79	68
BAY	1,908	2,132	2,121	2,214	2,179	MADISON	261	275	241	311	348
BRADFORD	321	319	327	250	306	MANATEE	3,120	3,090	3,123	3,251	3,349
BREVARD	4,850	4,787	4,932	4,760	4,544	MARION	3,636	3,738	3,839	3,574	4,898
BROWARD	25,530	24,887	24,023	23,600	22,880	MARTIN	1,479	1,535	1,496	1,486	1,434
CALHOUN	132	125	128	129	122	MIAMI-DADE	43,954	41,699	37,676	37,955	37,879
CHARLOTTE	1,502	1,474	1,489	1,643	1,867	MONROE	1,387	1,386	1,348	1,203	1,165
CITRUS	1,086	911	956	1,232	1,040	NASSAU	567	585	439	519	577
CLAY	1,208	1,494	1,269	1,291	1,369	OKALOOSA	1,799	1,923	1,891	1,853	1,899
COLLIER	2,722	2,575	2,333	2,482	2,388	OKEECHOBEE	354	421	467	373	400
COLUMBIA	888	1,034	930	1,006	709	ORANGE	16,581	15,344	14,986	15,009	15,894
DE SOTO	467	319	307	401	414	OSCEOLA	2,543	2,416	2,053	3,132	3,013
DIXIE	135	136	140	151	122	PALM BEACH	15,570	14,677	14,876	15,694	15,894
DUVAL	11,053	11,457	9,778	10,455	11,274	PASCO	4,526	4,323	4,435	6,862	8,033
ESCAMBIA	4,388	4,440	4,744	4,834	5,358	PINELLAS	13,312	12,147	11,310	11,593	12,089
FLAGLER	440	634	638	721	865	POLK	6,806	7,027	6,888	7,355	7,197
FRANKLIN	120	132	99	93	83	PUTNAM	879	744	825	891	882
GADSDEN	650	700	668	766	732	ST. JOHNS	1,555	1,569	1,981	1,576	1,821
GILCHRIST	144	154	164	174	117	ST. LUCIE	2,279	2,143	2,164	2,178	2,360
GLADES	128	114	84	126	134	SANTA ROSA	1,572	1,552	1,690	1,710	1,841
GULF	86	129	105	88	81	SARASOTA	3,390	3,455	3,357	3,088	3,273
HAMILTON	167	151	144	145	108	SEMINOLE	2,770	2,757	2,707	2,527	2,656
HARDEE	406	339	239	327	381	SUMTER	624	643	682	789	677
HENDRY	275	361	342	364	397	SUWANNEE	434	455	374	438	398
HERNANDO	1,597	1,692	1,672	1,956	1,982	TAYLOR	221	225	244	302	255
HIGHLANDS	787	736	763	814	724	UNION	126	91	112	91	86
HILLSBOROUGH	19,022	19,214	19,063	18,408	19,617	VOLUSIA	5,760	5,671	5,629	5,406	5,594
HOLMES	155	164	190	183	183	WAKULLA	259	274	292	196	208
INDIAN RIVER	1,326	1,321	1,273	1,316	1,411	WALTON	703	584	673	672	663
JACKSON	614	543	666	591	717	WASHINGTON	237	235	174	241	272
JEFFERSON	254	205	137	191	168	UNKNOWN	7	0	8	19	30
LAFAYETTE	53	62	40	77	54	STATEWIDE	234,600	229,611	221,639	227,192	233,930
LAKE	2,357	2,346	2,442	2,561	2,700						
LEE	4,967	5,096	5,571	5,240	5,686						
LEON	4,168	4,486	4,153	4,633	4,175						

County Data

2005 Florida Traffic Crash Statistics

TABLE 31 5 YEAR ALCOHOL-RELATED INJURY HISTORY BY COUNTY

COUNTY	2001	2002	2003	2004	2005	COUNTY	2001	2002	2003	2004	2005
ALACHUA	269	237	228	235	192	LEVY	84	51	55	61	64
BAKER	47	26	32	34	28	LIBERTY	17	16	14	9	10
BAY	249	260	243	314	311	MADISON	29	11	29	35	34
BRADFORD	43	28	47	23	23	MANATEE	387	320	295	378	355
BREVARD	562	525	502	457	426	MARION	324	281	300	286	282
BROWARD	1,713	1,350	1,475	1,377	1,424	MARTIN	153	131	159	146	165
CALHOUN	31	23	17	30	13	MIAMI-DADE	2,040	1,530	1,606	1,597	1,635
CHARLOTTE	180	127	150	181	191	MONROE	203	151	185	172	149
CITRUS	164	126	92	105	114	NASSAU	84	67	60	64	89
CLAY	132	128	124	134	112	OKALOOSA	203	251	203	191	212
COLLIER	370	285	325	289	244	OKEECHOBEE	59	58	64	41	42
COLUMBIA	116	117	95	102	94	ORANGE	1,181	872	1,007	990	1,038
DE SOTO	100	25	29	40	46	OSCEOLA	221	163	161	230	193
DIXIE	25	18	24	19	28	PALM BEACH	1,208	1,025	1,076	1,131	1,170
DUVAL	905	778	776	847	805	PASCO	434	383	449	545	614
ESCAMBIA	448	439	482	477	537	PINELLAS	1,433	1,218	1,180	1,193	1,162
FLAGLER	56	48	67	81	101	POLK	519	515	475	467	600
FRANKLIN	25	26	25	27	24	PUTNAM	147	76	126	126	87
GADSDEN	109	102	76	111	94	ST. JOHNS	186	140	201	167	226
GILCHRIST	24	23	30	21	19	ST. LUCIE	180	163	179	163	206
GLADES	16	20	15	15	24	SANTA ROSA	148	156	121	169	151
GULF	17	23	21	8	23	SARASOTA	417	338	320	322	349
HAMILTON	12	18	18	14	10	SEMINOLE	258	198	266	255	246
HARDEE	21	30	35	14	46	SUMTER	66	54	31	52	51
HENDRY	36	59	28	46	32	SUWANNEE	63	47	47	46	56
HERNANDO	184	143	142	165	162	TAYLOR	23	33	27	43	44
HIGHLANDS	58	74	55	59	64	UNION	26	12	26	8	14
HILLSBOROUGH	1,779	1,512	1,442	1,432	1,332	VOLUSIA	611	548	544	510	545
HOLMES	18	10	17	30	19	WAKULLA	50	42	58	28	31
INDIAN RIVER	130	122	96	106	128	WALTON	75	81	80	83	85
JACKSON	65	65	75	78	51	WASHINGTON	23	29	25	33	32
JEFFERSON	28	25	13	12	27	UNKNOWN	0	0	0	2	3
LAFAYETTE	6	11	9	12	11	STATEWIDE	20,001	16,864	17,379	17,580	17,783
LAKE	207	219	210	237	223						
LEE	625	524	676	540	557						
LEON	379	358	319	365	308						

5 YEAR VEHICLE AND/OR PROPERTY DAMAGE ONLY CRASH
HISTORY BY COUNTY

TABLE 32

COUNTY	2001	2002	2003	2004	2005	COUNTY	2001	2002	2003	2004	2005
ALACHUA	1,867	1,944	1,926	1,960	2,168	LEVY	128	134	151	155	196
BAKER	79	75	63	98	94	LIBERTY	12	15	15	15	21
BAY	761	933	903	1,068	1,147	MADISON	66	83	75	62	99
BRADFORD	131	122	130	105	154	MANATEE	1,581	1,553	1,554	1,629	1,850
BREVARD	1,619	1,466	1,393	1,484	1,730	MARION	919	1,132	1,183	1,335	1,673
BROWARD	11,853	11,077	10,889	11,330	12,284	MARTIN	707	720	695	782	835
CALHOUN	25	27	18	16	28	MIAMI-DADE	27,825	24,717	22,670	22,930	24,735
CHARLOTTE	717	736	867	958	981	MONROE	639	658	638	611	576
CITRUS	387	275	247	360	279	NASSAU	203	215	176	174	219
CLAY	491	868	904	989	541	OKALOOSA	842	798	856	915	912
COLLIER	1,287	1,267	1,203	1,219	1,316	OKEECHOBEE	95	118	120	128	143
COLUMBIA	245	204	228	268	216	ORANGE	5,617	5,166	5,087	6,264	7,320
DE SOTO	103	94	113	128	127	OSCEOLA	755	651	685	1,068	1,126
DIXIE	37	55	81	47	56	PALM BEACH	5,830	5,488	5,722	5,845	6,472
DUVAL	7,399	7,405	6,759	7,040	8,088	PASCO	1,195	1,345	1,390	1,881	1,853
ESCAMBIA	1,082	1,182	1,438	1,393	1,933	PINELLAS	6,304	6,026	5,898	6,058	6,135
FLAGLER	55	102	124	143	225	POLK	2,391	2,347	2,356	2,938	3,251
FRANKLIN	32	37	33	30	39	PUTNAM	415	420	302	337	428
GADSDEN	264	214	280	234	205	ST. JOHNS	578	572	637	624	710
GILCHRIST	52	48	69	62	63	ST. LUCIE	840	796	773	991	1,301
GLADES	52	40	51	37	39	SANTA ROSA	255	304	286	387	470
GULF	29	28	23	34	31	SARASOTA	1,397	1,433	1,432	1,408	1,593
HAMILTON	29	47	51	62	49	SEMINOLE	1,281	1,134	1,148	1,180	1,365
HARDEE	101	95	108	96	142	SUMTER	162	154	159	212	223
HENDRY	110	122	126	118	146	SUWANNEE	118	119	129	148	114
HERNANDO	287	310	281	315	411	TAYLOR	82	96	87	73	90
HIGHLANDS	225	271	298	292	359	UNION	31	21	19	26	24
HILLSBOROUGH	8,477	9,153	8,989	9,583	10,403	VOLUSIA	2,764	2,677	2,374	2,581	2,727
HOLMES	37	40	27	26	33	WAKULLA	76	84	72	65	73
INDIAN RIVER	669	636	561	596	655	WALTON	119	173	177	241	255
JACKSON	155	165	143	144	175	WASHINGTON	49	46	51	63	72
JEFFERSON	43	34	36	40	60	UNKNOWN	4	0	0	1	10
LAFAYETTE	15	16	31	16	19	STATEWIDE	108,244	104,662	101,523	107,578	117,541
LAKE	879	896	862	940	995						
LEE	2,284	2,272	2,356	2,299	2,485						
LEON	3,086	3,211	2,995	2,921	2,994						

TABLE 33 5 YEAR MOTORCYCLE FATALITY HISTORY BY COUNTY

COUNTY	2001	2002	2003	2004	2005	COUNTY	2001	2002	2003	2004	2005
ALACHUA	1	1	2	2	1	LEVY	5	0	0	2	3
BAKER	0	0	0	0	1	LIBERTY	0	1	0	0	0
BAY	5	2	4	4	2	MADISON	1	0	0	0	0
BRADFORD	1	0	1	1	0	MANATEE	5	4	8	7	10
BREVARD	7	7	10	12	13	MARION	10	5	14	9	14
BROWARD	23	29	23	30	41	MARTIN	3	3	2	6	2
CALHOUN	0	0	0	1	0	MIAMI-DADE	33	27	43	42	45
CHARLOTTE	3	3	4	4	13	MONROE	3	1	2	6	2
CITRUS	1	3	5	5	2	NASSAU	1	1	2	0	0
CLAY	2	2	5	5	5	OKALOOSA	3	3	2	1	4
COLLIER	2	4	6	2	2	OKEECHOBEE	1	1	3	2	1
COLUMBIA	0	0	0	4	0	ORANGE	5	13	16	27	21
DE SOTO	0	0	1	0	0	OSCEOLA	2	2	5	5	5
DIXIE	3	0	0	2	0	PALM BEACH	13	23	16	21	24
DUVAL	8	12	16	15	23	PASCO	5	9	9	6	12
ESCAMBIA	4	5	6	8	9	PINELLAS	10	12	22	17	17
FLAGLER	0	4	2	3	3	POLK	5	6	8	17	14
FRANKLIN	0	0	2	0	0	PUTNAM	2	3	1	1	2
GADSDEN	1	0	1	3	0	ST. JOHNS	2	5	5	5	7
GILCHRIST	1	0	0	0	1	ST. LUCIE	4	7	1	3	6
GLADES	0	1	0	0	0	SANTA ROSA	1	2	2	1	4
GULF	0	0	0	0	1	SARASOTA	6	3	13	9	6
HAMILTON	0	0	1	0	0	SEMINOLE	7	3	3	8	6
HARDEE	1	1	0	0	0	SUMTER	0	0	0	1	1
HENDRY	1	0	0	1	1	SUWANNEE	1	1	1	1	0
HERNANDO	2	2	4	6	4	TAYLOR	0	0	0	0	0
HIGHLANDS	2	2	1	4	3	UNION	0	0	0	1	1
HILLSBOROUGH	14	22	24	18	42	VOLUSIA	15	21	16	32	33
HOLMES	1	0	0	1	1	WAKULLA	1	0	1	0	1
INDIAN RIVER	1	2	0	2	3	WALTON	0	0	0	2	2
JACKSON	2	0	1	0	1	WASHINGTON	2	0	0	1	1
JEFFERSON	1	0	0	0	0	UNKNOWN	0	0	0	0	0
LAFAYETTE	0	0	0	0	0	STATEWIDE	252	274	339	388	441
LAKE	7	5	4	7	9						
LEE	9	9	17	14	13						
LEON	3	2	4	1	3						

County Data

2005 Florida Traffic Crash Statistics

TABLE 34 5 YEAR MOTORCYCLE INJURY HISTORY BY COUNTY

COUNTY	2001	2002	2003	2004	2005	COUNTY	2001	2002	2003	2004	2005
ALACHUA	45	73	76	78	63	LEVY	15	9	14	9	8
BAKER	4	1	2	5	8	LIBERTY	0	1	3	4	1
BAY	47	84	69	101	100	MADISON	3	1	2	2	7
BRADFORD	4	9	7	8	7	MANATEE	78	76	94	128	99
BREVARD	186	155	220	230	228	MARION	63	82	99	88	133
BROWARD	473	453	513	578	593	MARTIN	32	42	53	59	44
CALHOUN	2	4	3	5	3	MIAMI-DADE	680	622	715	753	818
CHARLOTTE	47	40	44	54	82	MONROE	209	227	209	223	221
CITRUS	30	35	36	44	52	NASSAU	8	17	11	16	15
CLAY	40	46	53	70	67	OKALOOSA	38	49	52	66	64
COLLIER	45	65	60	53	94	OKEECHOBEE	7	9	18	6	10
COLUMBIA	14	24	18	19	18	ORANGE	264	312	357	422	472
DE SOTO	7	7	7	12	7	OSCEOLA	52	61	48	84	84
DIXIE	4	3	6	3	3	PALM BEACH	270	298	341	353	388
DUVAL	274	319	351	327	328	PASCO	68	99	139	174	226
ESCAMBIA	103	78	100	102	141	PINELLAS	289	317	337	346	420
FLAGLER	30	34	26	32	48	POLK	134	161	153	176	214
FRANKLIN	2	4	6	5	3	PUTNAM	29	15	23	23	37
GADSDEN	11	11	10	17	11	ST. JOHNS	61	76	86	60	84
GILCHRIST	1	6	3	3	6	ST. LUCIE	54	23	51	66	86
GLADES	4	2	4	4	3	SANTA ROSA	24	22	32	47	42
GULF	2	1	2	1	2	SARASOTA	79	94	87	88	128
HAMILTON	1	4	0	3	3	SEMINOLE	95	97	93	121	131
HARDEE	5	5	3	6	13	SUMTER	12	10	13	17	19
HENDRY	4	6	7	10	12	SUWANNEE	4	6	7	5	6
HERNANDO	51	45	47	60	71	TAYLOR	1	6	2	5	4
HIGHLANDS	15	19	16	20	27	UNION	2	0	1	3	1
HILLSBOROUGH	317	346	435	439	503	VOLUSIA	440	437	435	461	519
HOLMES	2	2	4	7	5	WAKULLA	4	5	10	5	14
INDIAN RIVER	27	25	33	31	36	WALTON	14	14	15	14	28
JACKSON	7	4	7	6	20	WASHINGTON	1	6	7	7	4
JEFFERSON	5	3	1	6	1	UNKNOWN	0	0	0	0	0
LAFAYETTE	0	2	1	1	1						
LAKE	79	62	68	108	113						
LEE	117	139	145	178	193	STATEWIDE	5,101	5,384	5,973	6,558	7,282
LEON	66	74	83	101	90						

TABLE 35 5 YEAR BICYCLE FATALITY HISTORY BY COUNTY

COUNTY	2001	2002	2003	2004	2005	COUNTY	2001	2002	2003	2004	2005
ALACHUA	4	2	2	3	0	LEVY	0	0	0	0	0
BAKER	0	0	0	0	0	LIBERTY	0	0	0	0	0
BAY	3	1	2	0	1	MADISON	0	0	0	0	0
BRADFORD	0	0	0	0	0	MANATEE	3	2	1	1	4
BREVARD	2	3	1	2	3	MARION	4	2	2	3	0
BROWARD	6	4	5	6	8	MARTIN	1	0	2	2	2
CALHOUN	1	0	0	0	0	MIAMI-DADE	10	17	11	6	8
CHARLOTTE	0	2	1	1	0	MONROE	0	1	1	5	1
CITRUS	0	3	0	0	1	NASSAU	0	0	0	1	0
CLAY	0	1	0	0	0	OKALOOSA	0	1	1	0	0
COLLIER	4	5	2	1	5	OKEECHOBEE	1	0	2	1	0
COLUMBIA	0	1	2	1	1	ORANGE	7	6	5	8	10
DE SOTO	0	0	2	0	1	OSCEOLA	3	3	1	1	3
DIXIE	0	0	0	0	0	PALM BEACH	11	8	9	8	8
DUVAL	3	2	1	6	3	PASCO	3	4	3	6	1
ESCAMBIA	1	1	2	2	3	PINELLAS	7	6	5	13	7
FLAGLER	1	1	1	1	1	POLK	4	1	2	3	6
FRANKLIN	0	0	0	0	0	PUTNAM	1	0	0	1	0
GADSDEN	0	0	0	0	0	ST. JOHNS	2	1	2	3	3
GILCHRIST	0	0	0	0	0	ST. LUCIE	2	1	1	2	2
GLADES	0	0	0	0	0	SANTA ROSA	0	1	2	1	0
GULF	0	0	0	0	0	SARASOTA	1	1	5	5	3
HAMILTON	0	0	0	0	0	SEMINOLE	0	0	1	2	4
HARDEE	0	0	0	0	0	SUMTER	0	1	0	0	1
HENDRY	0	0	1	0	1	SUWANNEE	0	0	0	0	0
HERNANDO	1	1	1	1	1	TAYLOR	0	0	0	1	1
HIGHLANDS	1	0	0	0	0	UNION	0	0	0	0	0
HILLSBOROUGH	9	9	9	10	10	VOLUSIA	4	2	2	1	1
HOLMES	0	0	0	0	0	WAKULLA	0	0	0	0	0
INDIAN RIVER	1	0	0	1	0	WALTON	0	0	0	1	1
JACKSON	0	0	0	0	0	WASHINGTON	0	0	0	0	0
JEFFERSON	0	0	0	0	0	UNKNOWN	0	0	0	0	0
LAFAYETTE	0	0	0	0	0	STATEWIDE	107	108	95	119	119
LAKE	2	5	1	3	3						
LEE	4	7	4	6	9						
LEON	0	2	0	0	2						

County Data

2005 Florida Traffic Crash Statistics

TABLE 36

5 YEAR BICYCLE INJURY HISTORY BY COUNTY

COUNTY	2001	2002	2003	2004	2005	COUNTY	2001	2002	2003	2004	2005
ALACHUA	102	121	107	80	66	LEVY	3	4	3	2	4
BAKER	4	2	6	4	2	LIBERTY	1	1	0	0	0
BAY	36	45	43	41	30	MADISON	3	0	2	4	2
BRADFORD	0	1	5	2	4	MANATEE	107	103	111	142	103
BREVARD	130	139	146	120	137	MARION	25	33	37	51	55
BROWARD	597	660	669	672	530	MARTIN	41	48	42	47	49
CALHOUN	2	0	1	1	0	MIAMI-DADE	543	566	596	508	444
CHARLOTTE	29	34	39	38	32	MONROE	83	98	93	100	92
CITRUS	10	15	14	18	13	NASSAU	3	9	4	6	10
CLAY	26	31	16	39	34	OKALOOSA	29	46	31	30	32
COLLIER	90	99	111	77	80	OKEECHOBEE	4	2	2	3	3
COLUMBIA	9	4	11	4	6	ORANGE	275	268	332	283	305
DE SOTO	6	10	10	7	5	OSCEOLA	45	38	38	47	48
DIXIE	0	0	2	0	1	PALM BEACH	362	421	378	380	383
DUVAL	218	254	211	230	221	PASCO	65	97	107	127	115
ESCAMBIA	75	69	84	72	74	PINELLAS	390	401	460	398	404
FLAGLER	6	12	9	15	13	POLK	92	115	112	90	108
FRANKLIN	3	2	0	3	1	PUTNAM	14	12	8	8	4
GADSDEN	1	1	8	0	5	ST. JOHNS	36	44	44	41	39
GILCHRIST	2	1	0	0	0	ST. LUCIE	37	47	51	39	37
GLADES	3	0	0	0	0	SANTA ROSA	9	12	23	13	12
GULF	0	2	2	0	0	SARASOTA	134	135	128	126	145
HAMILTON	1	1	0	2	0	SEMINOLE	39	77	69	68	64
HARDEE	3	4	0	4	3	SUMTER	2	8	6	5	4
HENDRY	4	7	8	2	3	SUWANNEE	3	3	0	2	2
HERNANDO	18	15	22	23	15	TAYLOR	2	2	4	1	1
HIGHLANDS	10	6	9	8	7	UNION	2	0	0	0	0
HILLSBOROUGH	323	417	355	401	418	VOLUSIA	184	187	172	167	142
HOLMES	1	0	0	0	0	WAKULLA	0	0	1	2	2
INDIAN RIVER	30	28	31	31	24	WALTON	1	4	7	9	12
JACKSON	4	1	4	1	1	WASHINGTON	0	1	2	2	1
JEFFERSON	2	0	1	0	0	UNKNOWN	0	0	1	0	0
LAFAYETTE	0	0	0	0	0	STATEWIDE	4,476	4,970	4,991	4,820	4,515
LAKE	30	29	35	26	22						
LEE	126	133	138	130	83						
LEON	41	45	30	68	63						

TABLE 37

5 YEAR PEDESTRIAN FATALITY HISTORY BY COUNTY

COUNTY	2001	2002	2003	2004	2005	COUNTY	2001	2002	2003	2004	2005
ALACHUA	4	2	3	5	7	LEVY	1	1	0	1	1
BAKER	0	1	0	0	0	LIBERTY	0	1	2	0	0
BAY	4	4	6	4	8	MADISON	0	0	0	0	0
BRADFORD	1	1	0	0	2	MANATEE	12	5	14	9	11
BREVARD	12	11	13	15	18	MARION	14	10	9	9	12
BROWARD	42	36	43	38	41	MARTIN	4	7	3	4	5
CALHOUN	0	0	0	2	0	MIAMI-DADE	71	82	74	64	81
CHARLOTTE	1	0	4	1	6	MONROE	4	1	5	5	3
CITRUS	4	5	6	8	3	NASSAU	3	1	2	1	2
CLAY	3	0	1	7	5	OKALOOSA	3	7	2	0	6
COLLIER	6	4	8	4	3	OKEECHOBEE	3	1	1	1	3
COLUMBIA	3	1	3	3	3	ORANGE	40	39	40	31	42
DE SOTO	1	0	0	2	0	OSCEOLA	6	5	6	7	9
DIXIE	1	0	1	0	0	PALM BEACH	35	25	44	28	36
DUVAL	23	21	16	31	34	PASCO	19	24	17	28	15
ESCAMBIA	6	10	7	6	12	PINELLAS	19	31	27	31	31
FLAGLER	0	1	3	1	2	POLK	13	15	13	15	23
FRANKLIN	1	0	0	0	0	PUTNAM	6	3	5	6	4
GADSDEN	3	0	3	2	2	ST. JOHNS	4	4	1	6	2
GILCHRIST	0	0	0	1	0	ST. LUCIE	7	6	3	4	11
GLADES	1	0	0	1	0	SANTA ROSA	4	5	5	4	1
GULF	1	0	0	0	0	SARASOTA	7	9	14	8	11
HAMILTON	0	0	0	0	0	SEMINOLE	7	6	3	9	8
HARDEE	0	3	0	2	3	SUMTER	3	2	2	2	0
HENDRY	3	3	2	1	3	SUWANNEE	1	2	1	3	1
HERNANDO	4	2	7	8	3	TAYLOR	0	1	0	1	1
HIGHLANDS	4	4	0	1	5	UNION	0	0	0	1	0
HILLSBOROUGH	40	36	36	40	28	VOLUSIA	18	20	16	17	17
HOLMES	1	0	1	0	0	WAKULLA	1	0	1	0	0
INDIAN RIVER	6	1	2	2	3	WALTON	2	2	6	3	2
JACKSON	1	2	2	1	0	WASHINGTON	0	0	0	1	0
JEFFERSON	1	1	0	0	0	UNKNOWN	0	0	0	0	0
LAFAYETTE	0	0	0	0	0	STATEWIDE	510	484	509	504	576
LAKE	8	7	4	5	10						
LEE	16	11	18	10	32						
LEON	2	2	4	4	5						

County Data

2005 Florida Traffic Crash Statistics

TABLE 38

5 YEAR PEDESTRIAN INJURY HISTORY BY COUNTY

COUNTY	2001	2002	2003	2004	2005	COUNTY	2001	2002	2003	2004	2005
ALACHUA	103	97	95	113	133	LEVY	6	7	6	5	10
BAKER	3	1	7	8	4	LIBERTY	0	1	0	1	0
BAY	62	67	73	81	92	MADISON	2	2	6	2	8
BRADFORD	11	10	8	9	7	MANATEE	139	130	102	117	120
BREVARD	151	175	155	175	162	MARION	88	74	67	79	93
BROWARD	993	938	1,040	923	956	MARTIN	35	42	39	42	54
CALHOUN	1	0	2	1	2	MIAMI-DADE	1,717	1,571	1,473	1,405	1,484
CHARLOTTE	32	47	49	45	60	MONROE	44	55	61	53	51
CITRUS	27	19	21	33	36	NASSAU	12	18	11	18	14
CLAY	43	49	44	53	41	OKALOOSA	58	52	43	50	50
COLLIER	109	73	84	74	97	OKEECHOBEE	15	9	11	5	7
COLUMBIA	19	19	11	11	17	ORANGE	560	494	467	506	564
DE SOTO	12	11	10	13	13	OSCEOLA	80	69	64	88	107
DIXIE	1	2	3	1	3	PALM BEACH	625	502	552	632	608
DUVAL	408	345	317	329	390	PASCO	124	123	124	152	146
ESCAMBIA	110	121	121	144	140	PINELLAS	438	443	393	423	436
FLAGLER	15	7	16	21	19	POLK	180	176	181	204	215
FRANKLIN	2	2	2	1	3	PUTNAM	30	29	35	29	20
GADSDEN	13	9	15	14	11	ST. JOHNS	27	41	47	36	53
GILCHRIST	3	2	5	0	2	ST. LUCIE	68	62	72	83	97
GLADES	2	2	0	3	4	SANTA ROSA	25	24	20	29	34
GULF	1	0	6	6	0	SARASOTA	117	124	124	104	118
HAMILTON	3	0	2	4	1	SEMINOLE	100	106	103	109	102
HARDEE	15	6	11	6	5	SUMTER	5	13	9	18	14
HENDRY	7	19	9	8	15	SUWANNEE	4	7	10	6	7
HERNANDO	49	44	39	44	52	TAYLOR	3	4	6	2	1
HIGHLANDS	16	23	13	20	15	UNION	1	0	1	0	2
HILLSBOROUGH	577	544	554	514	571	VOLUSIA	223	227	240	223	208
HOLMES	1	2	3	2	1	WAKULLA	2	8	1	1	6
INDIAN RIVER	26	26	39	42	32	WALTON	10	7	17	7	7
JACKSON	10	6	6	6	13	WASHINGTON	5	3	4	5	4
JEFFERSON	0	1	1	2	1	UNKNOWN	0	0	4	10	3
LAFAYETTE	2	2	1	0	1	STATEWIDE	7,894	7,447	7,449	7,551	7,975
LAKE	52	58	59	60	67						
LEE	164	178	219	216	224						
LEON	108	119	116	125	142						

County Data

2005 Florida Traffic Crash Statistics

TABLE 39

5 YEAR CMV-RELATED CRASH HISTORY BY COUNTY

COUNTY	2001	2002	2003	2004	2005	COUNTY	2001	2002	2003	2004	2005
ALACHUA	285	297	313	360	388	LEVY	33	30	36	40	49
BAKER	29	42	23	28	51	LIBERTY	8	12	6	7	11
BAY	117	116	128	150	172	MADISON	30	35	26	33	52
BRADFORD	49	45	42	37	61	MANATEE	262	242	270	280	310
BREVARD	301	281	323	340	351	MARION	245	275	326	383	478
BROWARD	1,834	1,774	1,867	1,825	1,963	MARTIN	115	147	163	185	183
CALHOUN	7	12	16	11	9	MIAMI-DADE	3,624	3,458	3,087	3,251	3,648
CHARLOTTE	93	127	149	252	282	MONROE	104	117	111	92	114
CITRUS	83	61	49	67	62	NASSAU	73	83	72	80	83
CLAY	87	134	109	124	99	OKALOOSA	117	101	117	133	116
COLLIER	255	256	244	229	303	OKEECHOBEE	28	52	52	56	63
COLUMBIA	95	105	94	102	91	ORANGE	1,077	1,124	997	1,226	1,415
DE SOTO	36	36	46	55	53	OSCEOLA	202	196	225	335	337
DIXIE	15	13	15	12	17	PALM BEACH	1,207	1,267	1,360	1,429	1,602
DUVAL	1,150	1,141	1,018	1,246	1,469	PASCO	248	258	293	468	472
ESCAMBIA	207	224	231	279	342	PINELLAS	824	723	734	794	876
FLAGLER	22	59	66	78	115	POLK	639	653	753	878	974
FRANKLIN	7	12	7	5	3	PUTNAM	89	78	71	90	97
GADSDEN	91	76	84	93	78	ST. JOHNS	150	193	290	220	254
GILCHRIST	9	4	12	16	9	ST. LUCIE	188	234	173	245	330
GLADES	35	32	33	29	30	SANTA ROSA	66	95	86	141	160
GULF	4	9	3	8	8	SARASOTA	227	256	276	301	360
HAMILTON	26	22	20	28	25	SEMINOLE	229	230	208	206	239
HARDEE	45	41	42	53	45	SUMTER	77	87	85	116	125
HENDRY	53	49	66	56	70	SUWANNEE	34	42	45	44	44
HERNANDO	96	115	90	139	141	TAYLOR	18	32	16	19	33
HIGHLANDS	92	102	108	112	108	UNION	17	14	18	17	14
HILLSBOROUGH	1,509	1,575	1,566	1,734	1,878	VOLUSIA	375	416	425	445	475
HOLMES	11	10	11	13	15	WAKULLA	16	14	15	12	15
INDIAN RIVER	100	115	113	134	139	WALTON	51	47	44	58	65
JACKSON	50	49	51	52	64	WASHINGTON	17	13	13	25	24
JEFFERSON	33	19	18	25	27	UNKNOWN	0	0	1	0	2
LAFAYETTE	9	4	7	3	8	STATEWIDE	18,194	18,479	18,456	20,443	22,804
LAKE	243	225	266	301	331						
LEE	408	461	528	537	665						
LEON	318	312	304	301	312						

County Data

2005 Florida Traffic Crash Statistics

TABLE 40

5 YEAR CMV-RELATED FATALITY HISTORY BY COUNTY

COUNTY	2001	2002	2003	2004	2005	COUNTY	2001	2002	2003	2004	2005
ALACHUA	13	9	9	14	9	LEVY	1	2	0	6	5
BAKER	1	5	0	0	2	LIBERTY	0	0	1	0	1
BAY	4	0	3	3	2	MADISON	1	3	1	2	2
BRADFORD	0	0	2	0	1	MANATEE	11	3	8	5	10
BREVARD	7	18	15	17	12	MARION	15	5	22	9	10
BROWARD	11	31	19	23	31	MARTIN	3	5	7	8	3
CALHOUN	1	1	1	0	1	MIAMI-DADE	37	54	42	31	51
CHARLOTTE	3	7	3	9	8	MONROE	7	5	8	4	4
CITRUS	1	2	4	3	1	NASSAU	2	2	4	2	2
CLAY	2	9	3	4	5	OKALOOSA	4	2	7	2	4
COLLIER	10	13	12	5	9	OKEECHOBEE	5	6	3	5	9
COLUMBIA	2	8	8	5	6	ORANGE	22	21	19	18	22
DE SOTO	4	2	2	5	6	OSCEOLA	15	10	11	13	12
DIXIE	1	0	1	3	1	PALM BEACH	35	31	35	27	25
DUVAL	23	17	21	16	28	PASCO	16	8	13	13	18
ESCAMBIA	3	5	6	2	9	PINELLAS	11	9	7	8	9
FLAGLER	4	2	4	2	7	POLK	24	28	21	42	30
FRANKLIN	0	1	0	0	0	PUTNAM	5	5	6	3	3
GADSDEN	4	4	4	5	2	ST. JOHNS	11	7	5	5	6
GILCHRIST	1	0	1	0	0	ST. LUCIE	6	13	6	12	10
GLADES	2	4	2	4	2	SANTA ROSA	3	5	4	3	1
GULF	0	1	0	0	1	SARASOTA	5	4	9	6	9
HAMILTON	1	0	2	8	0	SEMINOLE	6	5	6	7	6
HARDEE	10	1	3	1	1	SUMTER	3	8	2	4	3
HENDRY	9	1	3	5	3	SUWANNEE	0	0	1	6	5
HERNANDO	4	3	2	7	7	TAYLOR	1	0	0	0	0
HIGHLANDS	5	9	3	4	7	UNION	0	1	3	0	0
HILLSBOROUGH	17	28	29	24	31	VOLUSIA	13	15	6	15	23
HOLMES	0	0	3	0	2	WAKULLA	1	2	1	0	0
INDIAN RIVER	8	3	6	6	6	WALTON	4	1	3	6	4
JACKSON	1	1	3	3	4	WASHINGTON	2	0	0	2	5
JEFFERSON	3	2	0	1	1	UNKNOWN	0	0	0	0	0
LAFAYETTE	0	0	0	0	0	STATEWIDE	445	472	465	467	536
LAKE	8	10	15	10	12						
LEE	8	11	13	12	23						
LEON	5	4	2	2	4						

County Data

2005 Florida Traffic Crash Statistics

TABLE 41 5 YEAR CMV-RELATED INJURY HISTORY BY COUNTY

COUNTY	2001	2002	2003	2004	2005	COUNTY	2001	2002	2003	2004	2005
ALACHUA	245	278	237	249	276	LEVY	40	29	31	43	90
BAKER	23	36	25	25	40	LIBERTY	6	21	4	7	7
BAY	101	86	130	128	143	MADISON	32	34	30	30	42
BRADFORD	41	37	43	27	59	MANATEE	224	235	214	240	268
BREVARD	341	287	335	351	293	MARION	340	414	340	396	478
BROWARD	1,775	1,602	1,714	1,579	1,513	MARTIN	118	140	115	144	151
CALHOUN	12	11	37	8	16	MIAMI-DADE	3,202	3,129	2,752	2,877	2,981
CHARLOTTE	106	84	96	162	190	MONROE	125	87	67	74	98
CITRUS	62	53	109	63	53	NASSAU	68	72	52	71	79
CLAY	76	130	73	87	96	OKALOOSA	116	95	106	129	111
COLLIER	234	230	215	227	215	OKEECHOBEE	38	58	38	55	65
COLUMBIA	104	133	115	123	57	ORANGE	1,073	1,137	1,035	1,251	1,203
DE SOTO	47	32	29	57	52	OSCEOLA	174	209	200	290	238
DIXIE	16	13	6	18	12	PALM BEACH	1,194	1,154	1,217	1,326	1,483
DUVAL	906	934	816	1,039	1,252	PASCO	303	242	413	543	745
ESCAMBIA	240	244	269	280	314	PINELLAS	795	612	586	581	646
FLAGLER	31	120	62	61	90	POLK	679	624	795	782	729
FRANKLIN	10	9	6	6	1	PUTNAM	69	56	63	53	69
GADSDEN	74	86	69	93	76	ST. JOHNS	140	173	232	184	194
GILCHRIST	9	4	8	10	5	ST. LUCIE	199	207	148	173	250
GLADES	37	20	17	24	31	SANTA ROSA	72	130	98	125	169
GULF	2	5	4	4	4	SARASOTA	190	261	258	239	268
HAMILTON	32	16	8	27	13	SEMINOLE	171	223	199	165	157
HARDEE	65	48	38	49	41	SUMTER	90	93	102	86	110
HENDRY	36	50	58	50	64	SUWANNEE	57	26	32	56	53
HERNANDO	96	126	130	147	150	TAYLOR	7	30	15	17	26
HIGHLANDS	119	94	127	85	90	UNION	15	12	16	17	10
HILLSBOROUGH	1,342	1,336	1,524	1,357	1,429	VOLUSIA	328	363	348	375	400
HOLMES	13	10	17	22	15	WAKULLA	34	13	9	13	25
INDIAN RIVER	85	117	84	107	125	WALTON	60	42	59	90	59
JACKSON	66	43	66	33	51	WASHINGTON	19	15	10	30	30
JEFFERSON	34	19	19	21	24						
LAFAYETTE	5	2	5	2	7	UNKNOWN	0	0	2	0	1
LAKE	237	180	247	330	328						
LEE	387	392	468	474	650	STATEWIDE	17,289	17,088	17,026	18,053	19,213
LEON	302	285	234	266	203						

Alcohol-Related Crashes By City/Locality

2005 Florida Traffic Crash Statistics

TABLE 42

Locality	County	Total Crashes	Alcohol-Related Crashes		Locality	County	Total Crashes	Alcohol-Related Crashes	
			Related Crashes	as % of Total				Related Crashes	as % of Total
Alachua	Alachua	152	16	10.53	Branford	Suwannee	3	0	0.00
Alford	Jackson	2	0	0.00	Brent	Escambia	130	9	6.92
Altamonte Springs	Seminole	475	62	13.05	Briny Breezes	Palm Beach	7	1	14.29
Altha	Calhoun	3	1	33.33	Bristol	Liberty	8	2	25.00
Anna Maria	Manatee	13	2	15.38	Broadview	Broward	3	0	0.00
Apalachicola	Franklin	6	2	33.33	Bronson	Levy	31	3	9.68
Apopka	Orange	264	17	6.44	Brooksville	Hernando	127	15	11.81
Arcadia	DeSoto	97	6	6.19	Browns Village	Miami-Dade	1	0	0.00
Archer	Alachua	11	1	9.09	Buena Vista	Pasco	1	0	0.00
Atlantic Beach	Duval	119	31	26.05	Bunnell	Flagler	63	10	15.87
Atlantis	Palm Beach	22	5	22.73	Bushnell	Sumter	37	3	8.11
Auburndale	Polk	248	16	6.45	Callahan	Nassau	22	6	27.27
Aventura	Miami-Dade	798	35	4.39	Calloway	Bay	85	18	21.18
Avon Park	Highlands	143	10	6.99	Cantonment	Escambia	37	3	8.11
Azalea Park	Orange	1	0	0.00	Cape Canaveral	Brevard	73	12	16.44
Bal Harbour	Miami-Dade	37	2	5.41	Cape Coral	Lee	1,059	96	9.07
Baldwin	Duval	15	1	6.67	Carol City	Miami-Dade	227	14	6.17
Bartow	Polk	247	13	5.26	Carrabelle	Franklin	5	1	20.00
Bascom	Jackson	1	0	0.00	Carver Ranch Estates	Broward	5	0	0.00
Bay Harbor Islands	Miami-Dade	33	1	3.03	Caryville	Washington	33	4	12.12
Bay Lake	Orange	18	1	5.56	Casselberry	Seminole	212	49	23.11
Bayard	Duval	2	1	50.00	Cedar Grove	Bay	63	10	15.87
Bayshore Gardens	Manatee	1	0	0.00	Cedar Hammock/Bradenton Shor	Manatee	1	0	0.00
Bell	Gilchrist	1	0	0.00	Cedar Key	Levy	2	1	50.00
Belle Glade	Palm Beach	143	6	4.20	Center Hill	Sumter	2	0	0.00
Belle Isle	Orange	6	0	0.00	Century	Escambia	6	0	0.00
Belleair	Pinellas	1	0	0.00	Chattahoochee	Gadsden	19	2	10.53
Belleair Beach	Pinellas	15	3	20.00	Chiefland	Levy	75	4	5.33
Belleair Bluffs	Pinellas	30	1	3.33	Cinco Bayou	Okaloosa	5	1	20.00
Belleview	Marion	112	5	4.46	Clair-Mel	Hillsborough	1	1	100.00
Beverly Beach	Flagler	3	0	0.00	Clearwater	Pinellas	1,618	222	13.72
Biscayne Gardens	Miami-Dade	2	0	0.00	Clermont	Lake	245	18	7.35
Biscayne Park	Miami-Dade	9	0	0.00	Clewiston	Hendry	68	4	5.88
Blountstown	Calhoun	16	1	6.25	Cloud Lake	Palm Beach	1	0	0.00
Boca Chica	Monroe	1	0	0.00	Cocoa	Brevard	451	45	9.98
Boca Chica NAS	Monroe	1	0	0.00	Cocoa Beach	Brevard	267	45	16.85
Boca Raton	Palm Beach	1,472	100	6.79	Coconut Creek	Broward	647	51	7.88
Bonifay	Holmes	2	0	0.00	Coleman	Sumter	2	0	0.00
Bonita Springs	Lee	168	32	19.05	Collier Manor/Cresthaven	Broward	22	3	13.64
Booker	Bradford	1	1	100.00	Conway	Orange	2	0	0.00
Bowling Green	Hardee	31	3	9.68	Cooper City	Broward	285	32	11.23
Boynton Beach	Palm Beach	1,174	90	7.67	Coral Gables	Miami-Dade	975	58	5.95
Bradenton	Manatee	282	26	9.22	Coral Springs	Broward	1,472	65	4.42
Bradenton Beach	Manatee	8	3	37.50	Coral Way Village	Miami-Dade	27	0	0.00
Brandon	Hillsborough	134	9	6.72	Cottdonale	Jackson	2	1	50.00

Alcohol-Related Crashes By City/Locality

2005 Florida Traffic Crash Statistics

TABLE 42

Locality	County	Total Crashes	Alcohol-Related Crashes		Locality	County	Total Crashes	Alcohol-Related Crashes	
			Related Crashes	as % of Total				Related Crashes	as % of Total
Crawfordville	Wakulla	15	1	6.67	Florida Atlantic University	Palm Beach	57	1	1.75
Crescent City	Putnam	44	3	6.82	Florida City	Miami-Dade	277	9	3.25
Crestview	Okaloosa	347	19	5.48	Florida International University	Miami-Dade	39	0	0.00
Cross City	Dixie	10	0	0.00	Florida School for Deaf/Blind	St. Johns	1	0	0.00
Cross City AF Station	Dixie	1	0	0.00	Florida State University	Leon	39	4	10.26
Crystal River	Citrus	157	21	13.38	Fort Lauderdale	Broward	4,245	319	7.51
Cutler Ridge	Miami-Dade	35	3	8.57	Fort Meade	Polk	60	2	3.33
Dade City	Pasco	187	7	3.74	Fort Myers	Lee	2,312	201	8.69
Dania Beach	Broward	638	52	8.15	Fort Myers Beach	Lee	44	12	27.27
Davenport	Polk	2	0	0.00	Fort Myers SE	Lee	4	0	0.00
Davie	Broward	2,028	167	8.23	Fort Myers Village/Pin Mn	Lee	18	3	16.67
Daytona Beach	Volusia	2,190	190	8.68	Fort Pierce	St. Lucie	723	44	6.09
Daytona Beach Shores	Volusia	32	9	28.13	Fort Pierce NW	St. Lucie	24	3	12.50
De Leon Springs	Volusia	12	2	16.67	Fort Walton Beach	Okaloosa	375	51	13.60
DeBary	Volusia	72	6	8.33	Freeport	Walton	21	3	14.29
Deerfield Beach	Broward	1,417	93	6.56	Frostproof	Polk	14	0	0.00
Defuniak Springs	Walton	128	11	8.59	Fruitland Park	Lake	66	4	6.06
DeLand	Volusia	339	26	7.67	Gainesville	Alachua	2,379	185	7.78
Delray Beach	Palm Beach	879	87	9.90	Gifford	Indian River	1	0	0.00
Deltona	Volusia	542	67	12.36	Glen Ridge	Palm Beach	1	0	0.00
Destin	Walton	5	2	40.00	Glen St. Mary	Baker	8	0	0.00
Dinsmore	Duval	7	0	0.00	Golden Beach	Miami-Dade	7	0	0.00
Doctors Inlet	Clay	1	1	100.00	Golden Glades	Miami-Dade	19	1	5.26
Doral	Miami-Dade	239	6	2.51	Golfview	Palm Beach	2	0	0.00
Dundee	Polk	72	7	9.72	Goulds	Miami-Dade	22	1	4.55
Dunedin	Pinellas	416	43	10.34	Graceville	Jackson	13	4	30.77
Dunnellon	Marion	1	0	0.00	Grand Ridge	Jackson	5	0	0.00
Duval County School PD	Duval	11	2	18.18	Green Cove Springs	Clay	87	6	6.90
Eagle Lake	Polk	11	1	9.09	Greenacres City	Palm Beach	310	38	12.26
East Naples	Collier	377	40	10.61	Greensboro	Gadsden	6	1	16.67
Eastpoint	Franklin	12	4	33.33	Greenville	Madison	5	2	40.00
Eatonville	Orange	4	0	0.00	Groveland	Lake	69	4	5.80
Ebro	Washington	5	0	0.00	Gulf Breeze	Santa Rosa	111	14	12.61
Edgewater	Volusia	251	31	12.35	Gulf Gate Estates	Sarasota	4	0	0.00
Edgewood	Orange	59	2	3.39	Gulf Stream	Palm Beach	8	0	0.00
Englewood	Sarasota	7	2	28.57	Gulfport	Pinellas	89	8	8.99
Englewood	Charlotte	165	7	4.24	Hacienda	Broward	1	0	0.00
Eustis	Lake	180	20	11.11	Haines City	Polk	359	42	11.70
Everglades	Collier	8	1	12.50	Hallandale	Broward	577	26	4.51
Fanning Springs	Levy	2	1	50.00	Hampton	Bradford	9	2	22.22
Fanning Springs	Gilchrist	1	1	100.00	Hastings	St. Johns	6	0	0.00
Fellsmere	Indian River	38	9	23.68	Havana	Gadsden	3	0	0.00
Fernandina Beach	Nassau	107	15	14.02	Haverhill	Palm Beach	12	0	0.00
Flagler Beach	Flagler	23	1	4.35	Hawthorne	Alachua	28	2	7.14
Florida A&M University	Leon	47	3	6.38	Hialeah	Miami-Dade	4,192	156	3.72

Alcohol-Related Crashes By City/Locality

2005 Florida Traffic Crash Statistics

TABLE 42

Locality	County	Total Crashes	Alcohol-Related Crashes		Locality	County	Total Crashes	Alcohol-Related Crashes	
			Related Crashes	as % of Total				Related Crashes	as % of Total
Hialeah Gardens	Miami-Dade	212	12	5.66	Keystone Heights	Clay	10	1	10.00
Highland Beach	Palm Beach	17	0	0.00	Kissimmee	Osceola	536	54	10.07
Hilliard	Nassau	17	2	11.76	La Belle	Hendry	54	7	12.96
Hillsboro Beach	Broward	15	1	6.67	La Crosse	Alachua	1	0	0.00
Hobe Sound	Martin	83	11	13.25	Lady Lake	Lake	153	15	9.80
Holden Hills	Orange	4	0	0.00	Lake Alfred	Polk	4	0	0.00
Holly Hill	Volusia	216	17	7.87	Lake Buena Vista	Orange	54	5	9.26
Hollywood	Broward	2,422	131	5.41	Lake Butler	Union	18	1	5.56
Hollywood Ridge Farm	Broward	1	0	0.00	Lake Carroll	Hillsborough	2	0	0.00
Holmes Beach	Manatee	32	4	12.50	Lake City	Columbia	250	28	11.20
Homestead	Miami-Dade	433	65	15.01	Lake Clark Shores	Palm Beach	7	1	14.29
Homestead AFB	Miami-Dade	3	0	0.00	Lake Forest	Broward	2	0	0.00
Homosassa Springs	Citrus	12	1	8.33	Lake Hamilton	Polk	35	3	8.57
Howey-in-the-Hills	Lake	4	0	0.00	Lake Helen	Volusia	12	2	16.67
Hypoluxo	Palm Beach	23	4	17.39	Lake Holloway	Polk	4	0	0.00
Immolakee	Collier	235	37	15.74	Lake Magdalene	Hillsborough	4	0	0.00
Indialantic	Brevard	26	6	23.08	Lake Mary	Seminole	130	24	18.46
Indian Creek Village	Miami-Dade	10	0	0.00	Lake Park	Palm Beach	118	9	7.63
Indian Harbour Beach	Brevard	50	5	10.00	Lake Placid	Highlands	57	6	10.53
Indian River Shores	Indian River	14	0	0.00	Lake Wales	Polk	230	19	8.26
Indian Rocks Beach	Pinellas	47	11	23.40	Lake Worth	Palm Beach	986	111	11.26
Indian Shores	Pinellas	13	2	15.38	Lakeland	Polk	1,362	153	11.23
Indiantown	Martin	64	18	28.13	Land O' Lakes	Pasco	49	2	4.08
Inglis	Levy	14	1	7.14	Lantana	Palm Beach	298	16	5.37
Interlachen	Putnam	17	3	17.65	Largo	Pinellas	1,089	156	14.33
Inverness	Citrus	88	10	11.36	Lauderdale by the Sea	Broward	88	5	5.68
Islamorada	Monroe	107	22	20.56	Lauderdale Lakes	Broward	292	10	3.42
Jacksonville	Duval	14,790	1,121	7.58	Lauderhill	Broward	613	26	4.24
Jacksonville Beach	Duval	715	122	17.06	Laurel Hill	Okaloosa	3	0	0.00
Jasper	Hamilton	28	4	14.29	Lawtey	Bradford	4	1	25.00
Jay	Santa Rosa	2	0	0.00	Layton	Monroe	3	0	0.00
Jennings	Hamilton	5	2	40.00	Lazy Lake Village	Broward	1	0	0.00
Jensen Beach	Martin	149	34	22.82	Lealman	Pinellas	17	4	23.53
June Park	Brevard	1	0	0.00	Lee	Madison	2	0	0.00
Juno Beach	Palm Beach	30	10	33.33	Lee County Airport Police	Lee	32	0	0.00
Jupiter	Palm Beach	504	45	8.93	Leesburg	Lake	284	32	11.27
Jupiter Inlet Colony	Palm Beach	1	0	0.00	Lehigh Acres	Lee	76	19	25.00
Jupiter Island	Martin	5	2	40.00	Leisure City	Miami-Dade	4	0	0.00
Kendall	Miami-Dade	332	9	2.71	Lighthouse Point	Broward	197	12	6.09
Kennedy Space Center	Brevard	27	4	14.81	Live Oak	Suwannee	104	24	23.08
Kenneth City	Pinellas	61	8	13.11	Longboat Key	Manatee	7	1	14.29
Key Biscayne	Miami-Dade	75	4	5.33	Longboat Key	Sarasota	12	2	16.67
Key Colony Beach	Monroe	6	2	33.33	Longwood	Seminole	247	33	13.36
Key Largo	Monroe	183	24	13.11	Lynn Haven	Bay	151	10	6.62
Key West	Monroe	704	140	19.89	Macclenny	Baker	65	6	9.23

Alcohol-Related Crashes By City/Locality

2005 Florida Traffic Crash Statistics

TABLE 42

Locality	County	Total Crashes	Alcohol-Related Crashes		Locality	County	Total Crashes	Alcohol-Related Crashes	
			Related Crashes	as % of Total				Related Crashes	as % of Total
MacDill AFB	Hillsborough	2	0	0.00	Naples	Collier	319	39	12.23
Madeira Beach	Pinellas	90	15	16.67	Naranja	Miami-Dade	4	0	0.00
Madison	Madison	49	4	8.16	Neptune Beach	Duval	66	21	31.82
Maitland	Orange	186	27	14.52	New Port Richey	Pasco	312	45	14.42
Malabar	Brevard	17	4	23.53	New Smyrna Beach	Volusia	364	50	13.74
Malone	Jackson	1	0	0.00	Newberry	Alachua	44	6	13.64
Mandarin	Duval	2	0	0.00	Niceville	Okaloosa	129	21	16.28
Mangonia Park	Palm Beach	81	4	4.94	Nokomis/Laurel	Sarasota	2	1	50.00
Marathon	Monroe	138	18	13.04	North Andrews Garden	Broward	2	0	0.00
Margate	Broward	544	62	11.40	North Bay Village	Miami-Dade	43	4	9.30
Marianna	Jackson	107	7	6.54	North Fort Myers	Lee	65	10	15.38
Mary Esther	Okaloosa	41	6	14.63	North Lauderdale	Broward	293	17	5.80
Mascotte	Lake	41	5	12.20	North Miami	Miami-Dade	1,750	39	2.23
Mayo	Lafayette	10	3	30.00	North Miami Beach	Miami-Dade	753	37	4.91
McCoy AFB	Orange	1	0	0.00	North Naples	Collier	208	34	16.35
Medley	Miami-Dade	157	0	0.00	North Palm Beach	Palm Beach	153	15	9.80
Melbourne	Brevard	701	120	17.12	North Port	Sarasota	296	41	13.85
Melbourne Beach	Brevard	19	4	21.05	North Redington Beach	Pinellas	8	1	12.50
Melbourne Village	Brevard	15	1	6.67	Norwood	Miami-Dade	3	0	0.00
Merritt Island	Brevard	372	53	14.25	Oak Hill	Volusia	6	2	33.33
Mexico Beach	Bay	17	3	17.65	Oakland	Orange	43	2	4.65
Miami	Miami-Dade	10,814	501	4.63	Oakland Park	Broward	1,054	68	6.45
Miami Beach	Miami-Dade	2,433	225	9.25	Ocala	Marion	1,302	72	5.53
Miami-Dade County School PD	Miami-Dade	106	3	4.94	Ocean Breeze Park	Martin	2	0	0.00
Miami Gardens	Miami-Dade	396	11	2.78	Ocean City	Okaloosa	11	2	18.18
Miami Lakes	Miami-Dade	494	21	4.25	Ocean Ridge	Palm Beach	8	0	0.00
Miami Shores	Miami-Dade	135	5	3.70	Ocoee	Orange	258	20	7.75
Miami Springs	Miami-Dade	85	13	15.29	Ojus	Miami-Dade	3	0	0.00
Miami TP	Miami-Dade	14	0	0.00	Okeechobee	Okeechobee	120	14	11.67
Micanopy	Alachua	6	0	0.00	Oldsmar	Pinellas	255	43	16.86
Miccosukee Indian Reservation	Miami-Dade	10	1	10.00	Opa Locka	Miami-Dade	68	5	7.35
Middleburg	Clay	8	0	0.00	Orange City	Volusia	174	10	5.75
Midway	Gadsden	48	4	8.33	Orange Park	Clay	99	14	14.14
Milton	Santa Rosa	184	8	4.35	Orlando	Orange	5,735	377	6.57
Mims	Brevard	41	9	21.95	Orlovista	Orange	8	0	0.00
Minneola	Lake	15	0	0.00	Ormond Beach	Volusia	434	66	15.21
Miramar	Broward	865	45	5.20	Ormond By The Sea	Volusia	3	0	0.00
Monticello	Jefferson	5	1	20.00	Oviedo	Seminole	134	16	11.94
Montverde	Lake	1	1	100.00	Pahokee	Palm Beach	10	2	20.00
Moore Haven	Glades	13	4	30.77	Palatka	Putnam	306	20	6.54
Mount Dora	Orange	2	0	0.00	Palm Bay	Brevard	639	90	14.08
Mount Dora	Lake	235	31	13.19	Palm Beach	Palm Beach	84	9	10.71
Mulberry	Polk	35	2	5.71	Palm Beach AFB	Palm Beach	18	1	5.56
Munson Island	Monroe	1	0	0.00	Palm Beach Gardens	Palm Beach	629	38	6.04
Myrtle Grove	Escambia	20	5	25.00	Palm Beach School Board	Palm Beach	3	0	0.00

Alcohol-Related Crashes By City/Locality

2005 Florida Traffic Crash Statistics

TABLE 42

Locality	County	Total Crashes	Alcohol-Related Crashes		Locality	County	Total Crashes	Alcohol-Related Crashes	
			Related Crashes	as % of Total				Related Crashes	as % of Total
Palm Beach Shores	Palm Beach	4	0	0.00	Raiford	Union	5	0	0.00
Palm City	Martin	115	23	20.00	Reddick	Marion	1	0	0.00
Palm River/Clair Mel	Hillsborough	2	0	0.00	Redington Beach	Pinellas	6	0	0.00
Palm Springs	Palm Beach	7	1	14.29	Redington Shores	Pinellas	12	2	16.67
Palmetto	Manatee	212	15	7.08	Richmond Heights	Miami-Dade	318	7	2.20
Palmetto Bay	Miami-Dade	104	3	2.88	Ridgewood Heights	Sarasota	2	0	0.00
Palmetto Estates	Miami-Dade	13	1	7.69	Riverland	Broward	1	0	0.00
Panama City	Bay	1,208	150	12.42	Riviera Beach	Palm Beach	710	48	6.76
Panama City Beach	Bay	272	57	20.96	Rockledge	Brevard	119	5	4.20
Parker	Bay	45	9	20.00	Royal Palm Beach	Palm Beach	371	42	11.32
Parkland	Broward	67	5	7.46	Ruskin	Hillsborough	14	2	14.29
Parrish	Manatee	1	0	0.00	Safety Harbor	Pinellas	175	24	13.71
Patrick AFB	Brevard	1	0	0.00	Saint Leo	Pasco	14	1	7.14
Paxton	Walton	2	0	0.00	San Antonio	Pasco	17	1	5.88
Pembroke Park	Broward	209	15	7.18	Sanford	Seminole	613	62	10.11
Pembroke Pines	Broward	1,769	64	3.62	Sanibel	Lee	29	6	20.69
Penny Farms	Clay	1	0	0.00	Santa Fe Community College	Alachua	15	0	0.00
Pensacola	Escambia	789	122	15.46	Santa Rosa Beach	Walton	10	1	10.00
Perrine	Miami-Dade	8	1	12.50	Sarasota	Sarasota	1,147	123	10.72
Perry	Taylor	108	8	7.41	Sarasota South	Sarasota	11	0	0.00
Pierson	Volusia	6	0	0.00	Satellite Beach	Brevard	69	14	20.29
Pine Crest Village	Miami-Dade	36	2	5.56	Sea Ranch Lakes	Broward	11	1	9.09
Pine Hills	Orange	8	0	0.00	Sebastian	Indian River	72	10	13.89
Pinellas Park	Pinellas	826	116	14.04	Sebring	Highlands	92	12	13.04
Pinewood	Miami-Dade	1	0	0.00	Seminole	Pinellas	356	38	10.67
Plant City	Hillsborough	419	27	6.44	Seminole Indian Reservation	Broward	147	25	17.01
Plantation	Broward	953	69	7.24	Seminole Park	Pinellas	15	0	0.00
Plantation	Monroe	2	1	50.00	Seville	Volusia	3	0	0.00
Polk City	Polk	11	3	27.27	Sewalls Point	Martin	14	3	21.43
Pompano Beach	Broward	2,312	138	5.97	Shalimar	Okaloosa	24	6	25.00
Pompano Beach Highlands	Broward	8	0	0.00	Silver Springs Shore	Marion	9	0	0.00
Ponce De Leon	Holmes	4	0	0.00	Sky Lake	Orange	1	0	0.00
Ponce Inlet	Volusia	15	5	33.33	Sneads	Jackson	5	0	0.00
Ponte Vedra	St. Johns	14	3	21.43	Sopchoppy	Wakulla	2	0	0.00
Port Charlotte	Sarasota	5	0	0.00	South Bay	Palm Beach	45	1	2.22
Port Charlotte	Charlotte	726	44	6.06	South Daytona	Volusia	138	23	16.67
Port Orange	Volusia	305	48	15.74	South Miami	Miami-Dade	267	14	5.24
Port Richey	Pasco	173	21	12.14	South Miami Heights	Miami-Dade	16	0	0.00
Port Saint Joe	Gulf	15	4	26.67	South Palm Beach	Palm Beach	2	0	0.00
Port Salerno	Martin	74	15	20.27	South Pasadena	Pinellas	71	7	9.86
Port St. Lucie	St. Lucie	962	119	12.37	South Patrick Shores	Brevard	2	0	0.00
Port Washington	Walton	1	1	100.00	Springfield	Bay	3	1	33.33
Progress Village	Hillsborough	3	0	0.00	St. Augustine	St. Johns	221	54	24.43
Punta Gorda	Charlotte	113	17	15.04	St. Augustine Beach	St. Johns	59	15	25.42
Quincy	Gadsden	116	8	6.90	St. Cloud	Osceola	314	35	11.15

Alcohol-Related Crashes By City/Locality

2005 Florida Traffic Crash Statistics

TABLE 42

Locality	County	Total Crashes	Alcohol-Related Crashes		Locality	County	Total Crashes	Alcohol-Related Crashes	
			Related Crashes	as % of Total				Related Crashes	as % of Total
St. Lucie Village	St. Lucie	1	0	0.00	Wauchula	Hardee	123	6	4.88
St. Pete/Clearwater Airport	Pinellas	2	0	0.00	Wausau	Washington	1	0	0.00
St. Petersburg	Pinellas	4,128	411	9.96	Weekiwachee	Hernando	6	3	50.00
St. Petersburg Beach	Pinellas	148	32	21.62	Wellington	Palm Beach	237	13	5.49
Starke	Bradford	159	6	3.77	West Bradenton	Manatee	583	35	6.00
Steinhatchee	Taylor	4	3	75.00	West Eau Gallie	Brevard	1	0	0.00
Stuart	Martin	532	72	13.53	West Hollywood	Broward	1	0	0.00
Sunny Isles	Miami-Dade	152	15	9.87	West Melbourne	Brevard	110	17	15.45
Sunrise	Broward	711	37	5.20	West Miami	Miami-Dade	56	2	3.57
Surfside	Miami-Dade	62	4	6.45	West Palm Beach	Palm Beach	2,045	166	8.12
Sweetwater	Miami-Dade	100	8	8.00	West Park	Broward	109	10	9.17
Tallahassee	Leon	4,577	290	6.34	West Pensacola	Escambia	90	12	13.33
Tamarac	Broward	755	24	3.18	Weston	Broward	275	19	6.91
Tampa	Hillsborough	9,826	725	7.38	Westville	Holmes	1	1	100.00
Tampa International Airport	Hillsborough	78	5	6.41	Westwood Lakes	Miami-Dade	417	10	2.40
Tarpon Springs	Pinellas	407	48	11.79	Wewahitchka	Gulf	6	0	0.00
Tavares	Lake	135	9	6.67	Wildwood	Sumter	39	3	7.69
Tavernier	Monroe	38	10	26.32	Williston	Levy	36	1	2.78
Temple Terrace	Hillsborough	280	20	7.14	Wilton Manors	Broward	152	22	14.47
Tequesta Village	Palm Beach	19	5	26.32	Windermere	Orange	25	0	0.00
Tice	Lee	4	1	25.00	Winter Garden	Orange	283	25	8.83
Titusville	Brevard	442	63	14.25	Winter Haven	Polk	402	39	9.70
Treasure Island	Pinellas	76	19	25.00	Winter Park	Orange	325	45	13.85
Trenton	Gilchrist	5	2	40.00	Winter Springs	Seminole	86	10	11.63
Uleta	Miami-Dade	213	6	2.82	Worthing Springs	Union	3	0	0.00
Umatilla	Lake	24	2	8.33	Yankeetown	Levy	1	0	0.00
Union Park	Orange	1	0	0.00	Yulee	Nassau	23	3	13.04
University of Central Florida	Orange	27	2	7.41	Zephyrhills	Pasco	233	10	4.29
University of Florida	Alachua	39	3	7.69	Zolfo Springs	Hardee	5	1	20.00
University of Miami	Miami-Dade	21	0	0.00					
University of North Florida	Duval	14	0	0.00					
University of South Florida	Hillsborough	119	4	3.36					
University of Tampa	Hillsborough	1	0	0.00					
University of West Florida	Escambia	7	0	0.00					
Valparaiso	Okaloosa	41	2	4.88					
Venice	Sarasota	257	23	8.95					
Venice South	Sarasota	7	1	14.29					
Vernon	Washington	5	0	0.00					
Vero Beach	Indian River	375	32	8.53					
Virginia Gardens	Miami-Dade	5	0	0.00					
Wabasso	Indian River	1	0	0.00					
Wahneta	Polk	1	0	0.00					
Wakulla	Wakulla	1	0	0.00					
Waldo	Alachua	1	0	0.00					
Warrington	Escambia	20	4	20.00					