



Traffic Crash Statistics Report 2006

A Compilation of Motor Vehicle Crash Data
From the Florida Crash Records Database

Electra Theodorides-Bustle
Executive Director

*Our Mission: Providing Highway Safety and Security through
Excellence in Service, Education and Enforcement*

2006 FLORIDA TRAFFIC CRASH STATISTICS

Traffic crashes	256,200
Drivers involved	370,035
Average crashes per day	702
Mileage Death Rate (per 100 million VMT)	1.65
Fatalities	3,365
Fatal crashes	3,084
Injuries	214,914
Injury crashes	137,282
Property damage only crashes	115,834
Alcohol-related fatalities	1,099
Alcohol-related injuries	16,319
Alcohol-related crashes	22,858
Alcohol-related fatal crashes	1,007
Alcohol-related injury crashes	10,439
Drug-related fatalities	202
Drug-related injuries	953
Drug-related crashes	1,193
Pedestrians killed	546
Pedestrians injured	7,754
Pedestrian crashes	8,346
Bicyclists killed	124
Bicycle passengers killed	2
Bicyclists injured	4,227
Bicycle passengers injured	39
Bicycle crashes	4,611
Motorcyclists killed	521
Motorcycle passengers killed	29
Motorcyclists injured	7,934
Motorcycle passengers injured	835
Motorcycle crashes	8,990



State of Florida
DEPARTMENT OF
HIGHWAY SAFETY AND MOTOR VEHICLES



ELECTRA THEODORIDES-BUSTLE
Executive Director

Office of Executive Director
Neil Kirkman Building
2900 Apalachee Parkway
Tallahassee, Florida 32399-0500
(850) 617-3100

Charlie Crist, *Governor*
Bill McCollum, *Attorney General*
Alex Sink, *Chief Financial Officer*
Charles H. Bronson, *Commissioner of Agriculture*

Dear Reader:

In accordance with Florida Statute 316.069, the Department of Highway Safety and Motor Vehicles is presenting the 2006 Florida Traffic Crash Statistics Report. The report contains data from the Department's crash database, compiled from traffic crash reports from state and local law enforcement agencies.

- Fatalities as a result of traffic crashes on Florida roadways decreased to 3,365 in 2006 from 3,533 in 2005 **For the first time in more than 10 years traffic fatalities have decreased from the previous year
- State Mileage Death Rate decreased to 1.65 deaths per 100 million vehicle miles traveled in 2006 (the lowest in state history) from 1.76 in 2005
- Traffic fatalities of drivers and passengers not using seat belts, in belt equipped vehicles, decreased to 1,301 in 2006 from 1,444 in 2005
- Alcohol related fatalities decreased to 1,099 in 2006 from 1,239 in 2005
- Motorcyclist and passenger fatalities increased to 550 in 2006 from 477 in 2005
- Bicyclist and passenger fatalities increased to 126 in 2006 from 119 in 2005
- Pedestrian fatalities decreased to 546 in 2006 from 576 in 2005

The tables in this report are used to assist in understanding problems and creating solutions that could help reduce the number of deaths and injuries on Florida's highways and roads. If additional information is needed you may contact this office via e-mail at omrd@hsmv.state.fl.us.

We hope you find this publication useful.

Sincerely,

Electra Theodorides-Bustle
Executive Director

TABLE OF CONTENTS

2006 Florida Traffic Crash Statistics

Source of Data	4
Definition of Terms	5
State of Florida Summary	7
Safety Equipment Use/Injury Levels	
Equipment Use by Drivers	10
Equipment Use by Vehicle Passengers	10
Equipment Use by Drivers and Vehicle Passengers	10
Equipment Use by Motorcyclists and Their Passengers	11
Equipment Use by Bicyclists and Their Passengers	11
Injuries and Fatalities by Miscellaneous Vehicles	12
Summary of Injuries and Fatalities	12
Motorcyclists and Bicyclists Crash Trends	
Motorcyclists and Bicyclists Killed	13
Motorcyclists and Bicyclists Injured	13
Motorcycle Crash Trend	
Motorcycle Crashes	14
Safety Equipment Use and Child Passengers	
Child Restraint Device and Safety Belt Use by Passenger Age Groups	15
Child Passengers Injured or Killed	15
Age of Drivers in Crashes	
Crash Rates for Florida Resident Drivers in Crashes by Age Groups	16
Crash Rates for Florida Resident Drinking Drivers in Crashes by Age Groups	16
Selected Age Groups	
Crash Rates for Florida Resident Drivers in Crashes for a Selected Age Group (15 - 29)	17
Crash Rates for Florida Resident Drivers in Crashes for a Selected Age Group (70 - 90+)	17
Crash Rates for Florida Resident Drinking Drivers in Crashes for a Selected Age Group (15 - 29)	18
Crash Rates for Florida Resident Drinking Drivers in Crashes for a Selected Age Group (70 - 90+)	18
Driver Profile	
Drivers Killed or Injured by Residence and Gender	19
Drivers Killed or Injured by Residence	19
Drivers Killed or Injured by Age Groups	19
Persons in Crashes by Age and Gender	
Persons Killed	20
Persons Injured	21
Pedestrian Behavior	
Pedestrians Killed in Crashes by Age and Type of Actions	22
Pedestrians Injured in Crashes by Age and Type of Actions	23
Pedestrians in Crashes by Age and Percent Drinking	24
Pedestrians in Crashes by Injury Severity and Percent Drinking	24
Pedestrian Crash Trend	
Pedestrians Killed	25
Pedestrians Injured	25
Pedestrian Fatality Rate	25

TABLE OF CONTENTS (Continued)

2006 Florida Traffic Crash Statistics

Truck Passengers	
Passengers Riding in Beds of Trucks by Age and Truck Types	26
Florida Motoring Environment	
Motoring Environment	27
Mileage Death Rate	28
Holiday Traffic Fatalities	29
Traffic Crashes by Day of Week and Time of Day	
All Crashes/Fatal Crashes	30
Traffic Crashes by Month	
All Crashes	31
Fatal Crashes	31
Contributing Causes	
Contributing Causes of Drivers in Crashes	32
Environmental Causes	
Lighting Conditions at the Time of Crash	33
Road Surface Conditions at the Time of Crash	33
Vehicle Harmful Events	
Vehicle Harmful Events	34
Vehicle and Truck Information	
Vehicle Types Involved in Crashes	35
Contributing Causes of Drivers in Truck Crashes	36
County Data (2002 through 2006)	
Crash History	37
Alcohol-Related Crash History	38
Fatality History	39
Alcohol-Related Fatality History	40
Injury History	41
Alcohol-Related Injury History	42
Vehicle and/or Property Damage Only Crash History	43
Motorcyclist Fatality History	44
Motorcyclist Injury History	45
Bicyclist Fatality History	46
Bicyclist Injury History	47
Pedestrian Fatality History	48
Pedestrian Injury History	49
CMV-Related Crash History	50
CMV-Related Fatality History	51
CMV-Related Injury History	52
Alcohol-Related Crashes by City/Locality	
Total Crashes and Alcohol-Related Crashes by City/Locality	53
Appendix	
Florida Traffic Crash Report Forms	

Source of Data

2006 Florida Traffic Crash Statistics

The information contained in this Traffic Crash Statistics booklet is extracted from law enforcement agency long-form reports of traffic crashes. A law enforcement officer must submit a long-form crash report when investigating:

- Motor vehicle crashes resulting in death or personal injury, or
- Motor vehicle crashes in which one or more of the following conditions occur:
 - Leaving the scene involving damage to an attended vehicle or property (Section 316.061 (1), F.S.), or
 - Driving while under the influence of alcoholic beverages, chemical substances, or controlled substances or with an unlawful blood alcohol level (Section 316.193, F.S.).

An investigating officer may report other traffic crashes on the long-form crash report. In particular, applicable statutes specify an officer's discretion to submit a long-form report in crashes where a vehicle is rendered inoperable to the degree that a wrecker is required to remove it from traffic.

Statutory revisions in 1983 and 1989 reduced the number of non-injury crashes required to be reported to the Department. Any presentation of historical data that includes such crashes, such as total traffic crash counts, will reflect these changes. Data on traffic crashes involving death, injury, or other criteria for law enforcement long-form reports as outlined above are not affected.

Definition of Terms

2006 Florida Traffic Crash Statistics

The following terms are defined as they apply to the crash data presented in this publication. These definitions may differ from legal or other uses of the same terms.

Alcohol-related traffic crash	A crash involving a driver and/or pedestrian for whom alcohol use was reported (does not presume intoxication).
Bicycle	A vehicle propelled solely by human power or a motorized bicycle propelled by a combination of human power and an electric helper motor rated at 200 watts or less (this term does not include a vehicle with a seat height less than 26 inches from the ground when the seat is adjusted to its highest position, or a scooter or similar device).
Bicyclist	The driver of a bicycle. A passenger on a bicycle is considered a vehicle passenger.
Commercial motor vehicle (CMV)	Means any motor vehicle or motor vehicle combination used on the streets or highways which: 1) has a gross, declared, or actual weight rating of 26,001 pounds or more; 2) is designed to transport more than 15 persons, including the driver; or 3) is transporting hazardous materials and is required to be placarded.
Driver	Unless otherwise indicated, the operator of a motor vehicle or bicycle. Driver data typically exclude uninjured persons presumed to have been operating hit-and-run, phantom, or properly parked vehicles.
Drinking driver	Indicates investigating officer's judgment on whether a driver was using alcohol. Codes include alcohol-under influence, alcohol and drugs-under influence, and had been drinking.
Fatal traffic crash	A traffic crash that results in one or more fatalities within thirty days of occurrence.
Harmful events	Identifies the first and subsequent harmful events for each vehicle in a traffic crash.
Injury	Hurt, damage, or loss sustained by a person as a result of a traffic crash. Definitions for the various injury levels are as follows:
<i>Possible injury</i>	<i>No visible signs of injury but complaint of pain or momentary unconsciousness.</i>

Definition of Terms

(Continued)

2006 Florida Traffic Crash Statistics

<i>Non-incapacitating injury</i>	<i>Any visible injuries such as bruises, abrasions, limping, etc.</i>
<i>Incapacitating injury</i>	<i>Any visible signs of injury from a crash and person(s) had to be carried from the scene.</i>
<i>Total injury</i>	<i>The sum of possible, non-incapacitating, and incapacitating injuries.</i>
Injury crash	A non-fatal traffic crash that results in one or more injuries.
Long form	Refers to a crash report prepared by a law enforcement officer where there has been a crash resulting in bodily injury, the death of a person or where a specified criminal offense has been committed.
Moped	A motor-powered cycle with a pedal-activated motor and a maximum of two brake horsepower.
Motor vehicle	Any motorized vehicle not operating on rails.
Motorcycle	A motor vehicle, with a seat or saddle for the driver's use, traveling with no more than three wheels in contact with the ground, excluding a tractor or a moped.
Motorcyclist	The driver of a motorcycle. A passenger on a motorcycle is considered a vehicle passenger.
Short form	Refers to a crash report in which the threshold of the long form does not apply. Therefore, a long form report is not prepared. In crashes where apparent damage is less than \$500, the law enforcement officer shall provide each party involved in the crash a short form prescribed by the state, to be completed by each party of the parties.
Traffic crash	A crash involving at least one motor vehicle on a roadway that is open to the public.
Traffic fatality	The death of a person as a direct result of a traffic crash within thirty days of the crash occurrence.
Vehicle and/or property damage only crash	Loss of all or part of an individual's vehicle and/or property resulting from a traffic crash not involving injury to a person.
Vehicle occupants	Drivers and passengers of automobiles, vans, trucks, buses, and motor homes.

State of Florida Summary

2006 Florida Traffic Crash Statistics

ALL CRASHES

Compared to 2005, there was a **4.6% decrease** in traffic crashes investigated and reported.

Traffic crashes	256,200
Drivers involved	370,035
Average crashes per day	702
Mileage Death Rate (per 100 million VMT)	1.65

FATALITIES AND FATAL CRASHES

Compared to 2005, there was an **4.8% decrease** in traffic fatalities.

Fatalities	3,365
Fatal crashes	3,084

INJURIES AND INJURY CRASHES

Compared to 2005, there was a **8.1% decrease** in traffic injuries.

Possible injuries	115,762
Non-incapacitating injuries	71,232
Incapacitating injuries	27,920
Total injuries	214,914
Injury crashes	137,282

ALCOHOL-RELATED FATALITIES, INJURIES, AND CRASHES

32.7% of traffic fatalities and 8.9% of traffic crashes were alcohol-related.

Alcohol-related fatalities	1,099
Alcohol-related injuries	16,319
Alcohol-related crashes	22,858
Alcohol-related fatal crashes	1,007
Alcohol-related injury crashes	10,439

CRASH ENVIRONMENTS

58.8% of all crashes occurred in primarily business areas, while 59.9% of fatal crashes were in open country and residential areas.

Crashes in Business Areas	150,694
Crashes in Residential Areas	74,263
Crashes in Open Country	31,241
Fatal Crashes in Business Areas	1,236
Fatal Crashes in Residential Areas	814
Fatal Crashes in Open Country	1,034

State of Florida Summary

2006 Florida Traffic Crash Statistics

PEDESTRIAN CRASHES

16.2% of all traffic fatalities were pedestrians.

Pedestrians killed	546
Pedestrians injured	7,754
Pedestrian crashes	8,346

Drinking is a major problem with pedestrians in traffic crashes. 11.32% (1,001) of all pedestrians in crashes (8,839) had been drinking and 34.07% (186) of all pedestrian fatalities (546) had been drinking.

BICYCLE CRASHES

3.7% of all traffic fatalities were bicycle drivers and their passengers.

Bicyclists killed	124
Bicycle passengers killed	2
Bicyclists injured	4,227
Bicycle passengers injured	39
Bicycle crashes	4,611

MOTORCYCLE CRASHES

16.3% of all traffic fatalities were motorcycle drivers and their passengers.

Motorcyclists killed	521
Motorcycle passengers killed	29
Motorcyclists injured	7,934
Motorcycle passengers injured	835
Motorcycle crashes	8,990

SAFETY EQUIPMENT USAGE

In 2006, Florida experienced 2,103 traffic deaths of drivers and passengers in Seat Belt Equipped Vehicles (SBEV). The tragic note of this, is 61.9% (1,301) of these people killed were not wearing seat belts.

Sixty-one percent of motorcyclists and their passengers killed were wearing helmets while 12% of bicyclists killed were wearing helmets. Thirty-nine percent of motorcyclists and their passengers killed were not wearing helmets while 88% of bicyclists killed were not wearing helmets.

Seventy-two percent (79 of 110) of the children ages 0 to 17 years old killed were not using safety equipment.

AGE OF FLORIDA RESIDENT DRIVERS IN CRASHES

Drivers in the age group of 15 to 19 years old have the highest rate per 10,000 licensed drivers of crash involvement (454.42) and drivers 20 to 24 years old have the highest rate in fatal crashes (5.23).

Drivers in the age group of 20 to 24 years old who had been drinking had the highest rate per 10,000 licensed drivers of crash involvement (25.43) and the highest rate in fatal crashes (1.36).

Drivers 18 years of age had the highest rate of crash involvement in all crashes (576.78) and in fatal crashes (7.56).

Of drinking drivers in crashes, 21 year old drivers had the highest involvement rate in all crashes (31.00) and in fatal crashes (1.70).

HOLIDAY TRAFFIC FATALITIES

Memorial Day 2006 Holiday experienced the highest fatality rate per hour (0.56) with 54 people killed in the 96 hour holiday period. 59.3% (32) of these fatalities had alcohol involved in the crash.

DAY AND TIME OF CRASHES

Friday, during the 5 p.m. hour, had the highest number of all types of crashes (3,294). Sunday, during the 2 a.m. hour, the highest number of fatal crashes (48). Saturday, during the 2 a.m. hour, was second with 40 fatal crashes in Florida.

Safety Equipment Use/ Injury Levels

2006 Florida Traffic Crash Statistics

TABLE 1* **Comparative Safety Equipment Use By Drivers**

	No Injury	%	Possible Injury	%	Non- Incapac- itating Injury	%	Incapac- itating Injury	%	Fatal	%	Injury Not Stated	%	Total
Safety Belt	95,424	43.39	26,448	35.44	12,383	29.40	3,612	23.80	181	12.33	3	0.37	138,051
Belt & Bag-Deployed	16,113	7.33	11,849	15.88	11,175	26.53	4,261	28.07	276	18.80	1	0.12	43,675
Belt & Bag-Not Deployed	93,614	42.57	29,806	39.94	12,772	30.32	4,118	27.13	125	8.51	4	0.49	140,439
Not Using Safety Equipment	12,014	5.46	4,267	5.72	4,034	9.58	2,256	14.86	618	42.10	8	0.99	23,197
Air Bag Only-Deployed	590	0.27	588	0.79	635	1.51	316	2.08	88	5.99	1	0.12	2,218
Air Bag Only-Not Deployed	2,000	0.91	962	1.29	1,001	2.38	561	3.70	172	11.72	3	0.37	4,699
Use Not Stated	148	0.07	705	0.94	124	0.29	55	0.36	8	0.54	792	97.54	1,832
TOTAL	219,903	100	74,625	100	42,124	100	15,179	100	1,468	100	812	100	354,111

Comparative Safety Equipment Use By Vehicle Passengers

	No Injury	%	Possible Injury	%	Non- Incapac- itating Injury	%	Incapac- itating Injury	%	Fatal	%	Injury Not Stated	%	Total
Safety Belt	51,374	45.28	15,587	44.37	7,035	38.09	1,939	28.74	97	15.28	0	0.00	76,032
Belt & Bag-Deployed	3,820	3.37	2,932	8.35	2,631	14.24	1,087	16.11	69	10.87	0	0.00	10,539
Belt & Bag-Not Deployed	25,851	22.79	9,374	26.68	4,154	22.49	1,299	19.26	40	6.30	0	0.00	40,718
Child Restraint	6,989	6.16	1,583	4.51	405	2.19	121	1.79	5	0.79	0	0.00	9,103
Child Restraint/Belt	1,470	1.30	352	1.00	101	0.55	19	0.28	1	0.16	0	0.00	1,943
Child Restraint/Bag-Deployed	87	0.08	61	0.17	27	0.15	11	0.16	0	0.00	0	0.00	186
Child Restraint/Bag-Not Deployed	809	0.71	233	0.66	50	0.27	16	0.24	0	0.00	0	0.00	1,108
Not Using Safety Equipment	21,495	18.95	4,312	12.27	3,370	18.25	1,870	27.72	344	54.17	0	0.00	31,391
Air Bag Only-Deployed	200	0.18	147	0.42	184	1.00	95	1.41	17	2.68	0	0.00	643
Air Bag Only-Not Deployed	1,331	1.17	549	1.56	503	2.72	283	4.20	62	9.76	0	0.00	2,728
Use Not Stated	20	0.02	3	0.01	10	0.05	6	0.09	0	0.00	0	0.00	39
TOTAL	113,446	100	35,133	100	18,470	100	6,746	100	635	100	0	0	174,430

TABLE 1A* **Comparative Safety Equipment Use By Drivers and Vehicle Passengers**

	No Injury	%	Possible Injury	%	Non- Incapac- itating Injury	%	Incapac- itating Injury	%	Fatal	%	Injury Not Stated	%	Total
Safety Belt	146,798	44.04	42,035	38.30	19,418	32.05	5,551	25.32	278	13.22	3	0.37	214,083
Belt & Bag-Deployed	19,933	5.98	14,781	13.47	13,806	22.78	5,348	24.39	345	16.41	1	0.12	54,214
Belt & Bag-Not Deployed	119,465	35.84	39,180	35.70	16,926	27.93	5,417	24.71	165	7.85	4	0.49	181,157
Child Restraint	6,989	2.10	1,583	1.44	405	0.67	121	0.55	5	0.24	0	0.00	9,103
Child Restraint/Belt	1,470	0.44	352	0.32	101	0.17	19	0.09	1	0.05	0	0.00	1,943
Child Restraint/Bag-Deployed	87	0.03	61	0.06	27	0.04	11	0.05	0	0.00	0	0.00	186
Child Restraint/Bag-Not Deployed	809	0.24	233	0.21	50	0.08	16	0.07	0	0.00	0	0.00	1,108
Not Using Safety Equipment	33,509	10.05	8,579	7.82	7,404	12.22	4,126	18.82	962	45.74	8	0.99	54,588
Air Bag Only-Deployed	790	0.24	735	0.67	819	1.35	411	1.87	105	4.99	1	0.12	2,861
Air Bag Only-Not Deployed	3,331	1.00	1,511	1.38	1,504	2.48	844	3.85	234	11.13	3	0.37	7,427
Use Not Stated	168	0.05	708	0.65	134	0.22	61	0.28	8	0.38	792	97.54	1,871
TOTAL	333,349	100	109,758	100	60,594	100	21,925	100	2,103	100	812	100	528,541

* Both tables refer to Seat Belt Equipped Vehicles (SBEV) which include vehicle types: automobiles, vans, trucks, motor homes, and buses.

NOTE: In 2006, Florida experienced 2,103 traffic deaths of drivers and passengers in SBEV. The tragic note of this, is 61.9% (1,301) of these people killed were not wearing seat belts.

Safety Equipment Use/ Injury Levels*

2006 Florida Traffic Crash Statistics

TABLE 1B Comparative Safety Equipment Use By Motorcyclists and Their Passengers

	No Injury	%	Possible Injury	%	Non-Incapacitating Injury	%	Incapacitating Injury	%	Fatal	%	Injury Not Stated	%	Total
With Safety Helmet													
Driver	443	47.89	838	49.79	2,294	54.23	1,541	53.96	322	58.55	6	100.00	5,444
Passenger	58	6.27	90	5.35	237	5.60	139	4.87	12	2.18	0	0.00	536
SUBTOTAL	501	54.16	928	55.14	2,531	59.83	1,680	58.82	334	60.73	6	100.00	5,980
Without Safety Helmet													
Driver	342	36.97	663	39.39	1,503	35.53	1,075	37.64	199	36.18	0	0.00	3,782
Passenger	82	8.86	74	4.40	194	4.59	101	3.54	17	3.09	0	0.00	468
SUBTOTAL	424	45.84	737	43.79	1,697	40.12	1,176	41.18	216	39.27	0	0.00	4,250
Use Not Stated													
Driver	0	0.00	18	1.07	2	0.05	0	0.00	0	0.00	0	0.00	20
Passenger	0	0.00	0	0.00	0	0.00	0	0.00	0	0.00	0	0.00	0
SUBTOTAL	0	0.00	18	1.07	2	0.05	0	0.00	0	0.00	0	0.00	20
TOTAL	925	100	1,683	100	4,230	100	2,856	100	550	100	6	100	10,250

TABLE 1C Comparative Safety Equipment Use By Bicyclists and Their Passengers

	No Injury	%	Possible Injury	%	Non-Incapacitating Injury	%	Incapacitating Injury	%	Fatal	%	Injury Not Stated	%	Total
With Safety Helmet													
Driver	30	8.80	128	9.60	284	13.20	89	11.41	14	11.11	0	0.00	545
Passenger	0	0.00	0	0.00	2	0.09	0	0.00	1	0.79	0	0.00	3
SUBTOTAL	30	8.80	128	9.60	286	13.29	89	11.41	15	11.90	0	0.00	548
Without Safety Helmet													
Driver	277	81.23	1,171	87.78	1,843	85.64	684	87.69	110	87.30	0	0.00	4,085
Passenger	34	9.97	16	1.20	16	0.74	5	0.64	1	0.79	0	0.00	72
SUBTOTAL	311	91.20	1,187	88.98	1,859	86.38	689	88.33	111	88.10	0	0.00	4,157
Use Not Stated													
Driver	0	0.00	19	1.42	7	0.33	2	0.26	0	0.00	0	0.00	28
Passenger	0	0.00	0	0.00	0	0.00	0	0.00	0	0.00	0	0.00	0
SUBTOTAL	0	0.00	19	1.42	7	0.33	2	0.26	0	0.00	0	0.00	28
TOTAL	341	100	1,334	100	2,152	100	780	100	126	100	0	0	4,733

* Injuries reported for motorcyclists and bicyclists include head and other bodily injuries.

NOTE: Sixty-one percent of motorcyclists and their passengers killed were wearing helmets while 12% of bicyclists killed were wearing helmets. Thirty-nine percent of motorcyclists and their passengers killed were not wearing helmets while 88% of bicyclists killed were not wearing helmets.

Safety Equipment Use/ Injury Levels

2006 Florida Traffic Crash Statistics

TABLE 1D INJURIES AND FATALITIES BY MISCELLANEOUS VEHICLES

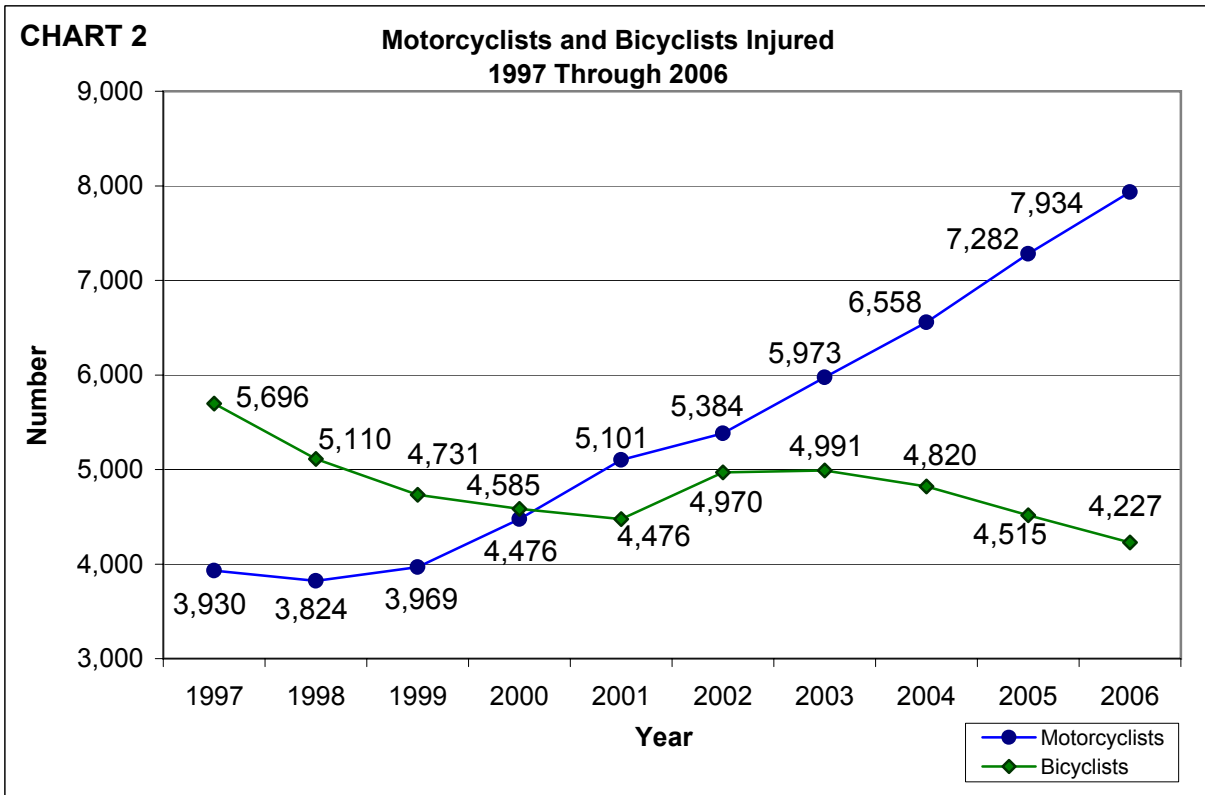
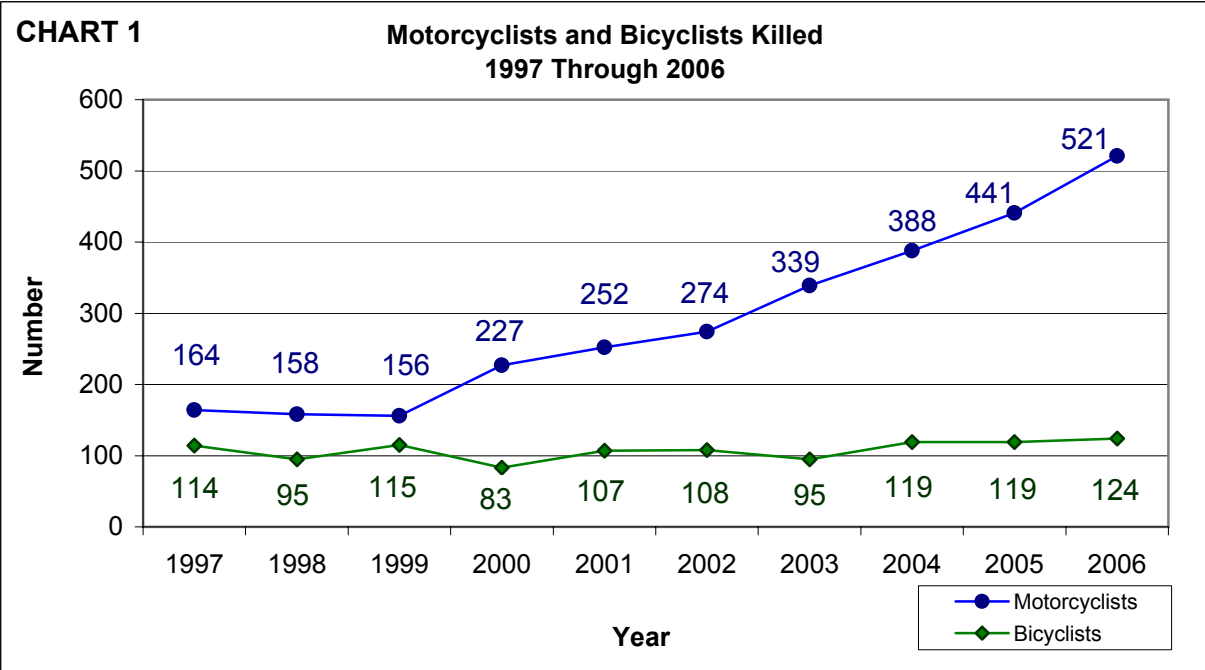
	No Injury	%	Possible Injury	%	Non-Incapacitating Injury	%	Incapacitating Injury	%	Fatal	%	Injury Not Stated	%	Total
Moped													
Driver	76	83.52	159	88.83	346	91.53	130	90.28	8	88.89	0	0.00	719
Passenger	15	16.48	20	11.17	32	8.47	14	9.72	1	11.11	0	0.00	82
SUBTOTAL	91	100	179	100	378	100	144	100	9	100	0	0	801
All Terrain Vehicle													
Driver	193	63.07	115	68.05	237	75.00	200	75.47	18	81.82	0	0.00	763
Passenger	113	36.93	54	31.95	79	25.00	65	24.53	4	18.18	0	0.00	315
SUBTOTAL	306	100	169	100	316	100	265	100	22	100	0	0	1,078
Train													
Driver	38	57.58	1	100.00	0	0.00	0	0.00	0	0.00	0	0.00	39
Passenger	28	42.42	0	0.00	0	0.00	0	0.00	1	0.00	0	0.00	29
SUBTOTAL	66	100	1	100	0	0	0	0	1	0	0	0	68
Low Speed Vehicle													
Driver	62	72.94	34	54.84	51	83.61	30	81.08	6	100.00	0	0.00	183
Passenger	23	27.06	28	45.16	10	16.39	7	18.92	0	0.00	0	0.00	68
SUBTOTAL	85	100	62	100	61	100	37	100	6	100	0	0	251
Unknown Vehicle Type													
Driver	0	0.00	122	66.30	22	50.00	5	62.50	1	50.00	0	0.00	150
Passenger	385	100.00	62	33.70	22	50.00	3	37.50	1	50.00	0	0.00	473
SUBTOTAL	385	100	184	100	44	100	8	100	2	100	0	0	623
TOTAL	933		595		799		454		40		0		2,821

TABLE 1E SUMMARY OF INJURIES AND FATALITIES

	No Injury	%	Possible Injury	%	Non-Incapacitating Injury	%	Incapacitating Injury	%	Fatal	%	Injury Not Stated	%	Total
Table 1A	333,349	99.21	109,758	94.81	60,594	85.07	21,925	78.53	2,103	62.50	812	94.97	528,541
Table 1B	925	0.28	1,683	1.45	4,230	5.94	2,856	10.23	550	16.34	6	0.70	10,250
Table 1C	341	0.10	1,334	1.15	2,152	3.02	780	2.79	126	3.74	0	0.00	4,733
Table 1D	933	0.28	595	0.51	799	1.12	454	1.63	40	1.19	0	0.00	2,821
Pedestrians	468	0.14	2,392	2.07	3,457	4.85	1,905	6.82	546	16.23	37	4.33	8,805
TOTAL	336,016	100	115,762	100	71,232	100	27,920	100	3,365	100	855	100	555,150

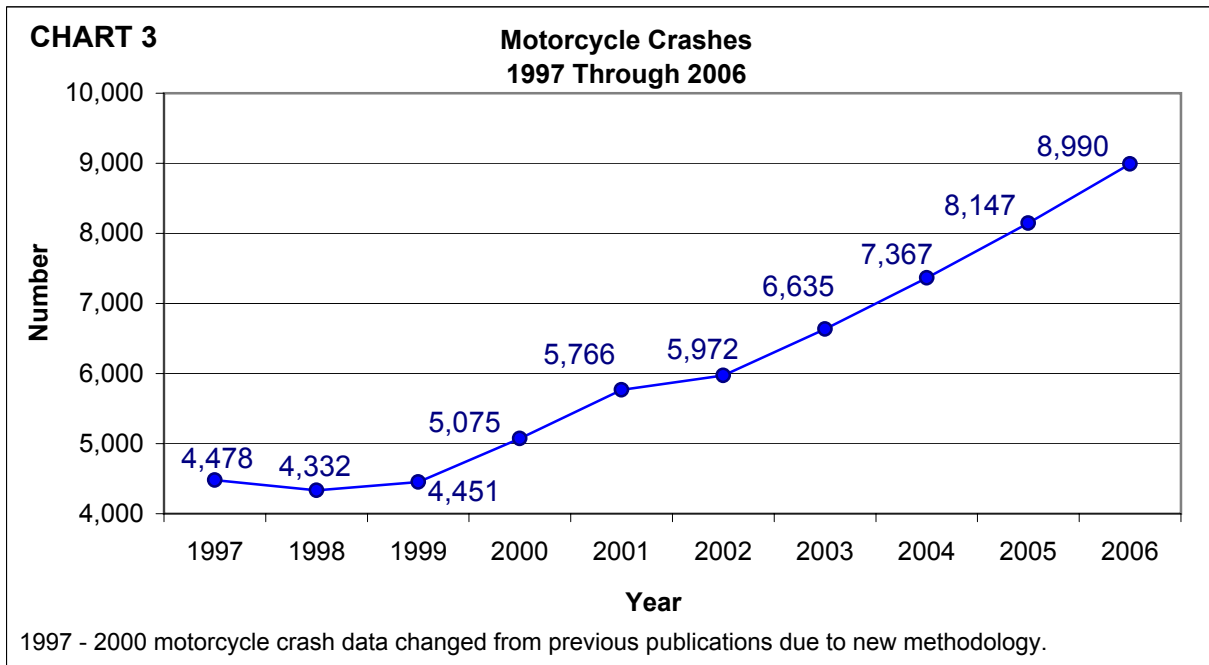
Motorcyclists and Bicyclists Crash Trends

2006 Florida Traffic Crash Statistics



Motorcycle Crash Trend

2006 Florida Traffic Crash Statistics



Safety Equipment Use and Child Passengers*

2006 Florida Traffic Crash Statistics

**Child Restraint Device and Safety Belt Use
By Passenger Age Groups**

TABLE 2

Age Group	No Injury	%	Injury	%	Fatal	%	Injury Not Stated	%
0 to 3								
With Restraint	8,426	94.95	2,614	90.39	7	50.00	0	0.00
Without Restraint	442	4.98	278	9.61	7	50.00	0	0.00
Use Not Stated	6	0.07	0	0.00	0	0.00	0	0.00
Total	8,874	100	2,892	100	14	100	0	0
4 to 5								
With Restraint	3,827	88.98	1,346	87.18	2	22.22	0	0.00
Without Restraint	474	11.02	197	12.76	7	77.78	0	0.00
Use Not Stated	0	0.00	1	0.06	0	0.00	0	0.00
Total	4,301	100	1,544	100	9	100	0	0
6 to 17								
With Restraint	24,210	73.82	11,392	79.99	22	25.29	0	0.00
Without Restraint	8,585	26.18	2,847	19.99	65	74.71	0	0.00
Use Not Stated	3	0.01	3	0.02	0	0.00	0	0.00
Total	32,798	100	14,242	100	87	100	0	0

NOTE: 71.8% (79 of 110) of the children ages 0 to 17 years old killed were not using safety equipment.

**Child Passengers Injured or Killed
1997 Through 2006**

TABLE 3

Year	Age Group By Injury Level												
	Injury						Fatal						
	0 to 3	%	4 to 5	%	6 to 17	%	0 to 3	%	4 to 5	%	6 to 17	%	Total
1997	2,740	9.70	2,215	11.90	19,610	11.50	12	6.52	9	9.47	104	9.65	24,690
1998	2,572	9.10	2,186	11.75	19,791	11.60	19	10.33	12	12.63	97	9.00	24,677
1999	2,554	9.04	2,003	10.76	19,565	11.47	15	8.15	9	9.47	120	11.13	24,266
2000	2,642	9.35	1,939	10.42	17,684	10.37	15	8.15	8	8.42	121	11.22	22,409
2001	2,731	9.67	1,925	10.35	18,035	10.57	12	6.52	7	7.37	109	10.11	22,819
2002	2,957	10.47	1,545	8.30	14,811	8.68	24	13.04	9	9.47	105	9.74	19,451
2003	3,139	11.11	1,591	8.55	15,202	8.91	21	11.41	6	6.32	97	9.00	20,056
2004	2,951	10.44	1,780	9.57	15,642	9.17	25	13.59	13	13.68	121	11.22	20,532
2005	3,076	10.89	1,879	10.10	15,992	9.38	27	14.67	13	13.68	117	10.85	21,104
2006	2,892	10.24	1,544	8.30	14,242	8.35	14	7.61	9	9.47	87	8.07	18,788
Total	28,254	100	18,607	100	170,574	100	184	100	95	100	1,078	100	218,792

* Does not include passengers of bicycles, motorcycles, or all-terrain vehicles on both tables.

Age of Drivers in Crashes*

2006 Florida Traffic Crash Statistics

TABLE 4 Crash Rates for Florida Resident Drivers in Crashes By Age Groups

Age Groups	Driver Licenses Issued	Drivers in All Crashes	Rate Per 10,000 Licensed Drivers	Drivers in Fatal Crashes	Rate Per 10,000 Licensed Drivers
Under 15	0	557		5	
15-19	814,801	37,026	454.42	417	5.12
20-24	1,268,947	49,537	390.38	664	5.23
25-29	1,379,556	38,029	275.66	489	3.54
30-34	1,332,098	32,809	246.30	386	2.90
35-39	1,443,198	33,256	230.43	387	2.68
40-44	1,521,072	33,561	220.64	405	2.66
45-49	1,490,568	29,660	198.98	342	2.29
50-54	1,324,172	24,284	183.39	306	2.31
55-59	1,198,687	19,130	159.59	241	2.01
60-64	1,019,457	13,375	131.20	176	1.73
65-69	813,056	9,278	114.11	132	1.62
70-74	658,663	6,915	104.99	104	1.58
75-79	557,202	5,748	103.16	105	1.88
80-84	397,602	3,978	100.05	74	1.86
85-89	201,612	1,891	93.79	57	2.83
90+	71,187	569	79.93	18	2.53
Unknown	0	3,750		20	
TOTAL	15,491,878	343,353	221.63	4,328	2.79

NOTE: Drivers 15 to 19 years of age have the highest rate per 10,000 licensed drivers of crash involvement (454.42) and drivers 20 to 24 years of age have the highest rate in fatal crashes (5.23).

TABLE 5 Crash Rates for Florida Resident Drinking Drivers in Crashes By Age Groups

Age Groups	Driver Licenses Issued	Drinking Drivers in All Crashes	Rate Per 10,000 Licensed Drivers	Drinking Drivers in Fatal Crashes	Rate Per 10,000 Licensed Drivers
Under 15	0	15		0	
15-19	814,801	1,090	13.38	58	0.71
20-24	1,268,947	3,227	25.43	173	1.36
25-29	1,379,556	2,304	16.70	113	0.82
30-34	1,332,098	1,617	12.14	67	0.50
35-39	1,443,198	1,568	10.86	79	0.55
40-44	1,521,072	1,707	11.22	73	0.48
45-49	1,490,568	1,542	10.35	56	0.38
50-54	1,324,172	990	7.48	35	0.26
55-59	1,198,687	655	5.46	35	0.29
60-64	1,019,457	345	3.38	19	0.19
65-69	813,056	198	2.44	10	0.12
70-74	658,663	122	1.85	6	0.09
75-79	557,202	72	1.29	6	0.11
80-84	397,602	37	0.93	1	0.03
85-89	201,612	12	0.60	1	0.05
90+	71,187	8	1.12	2	0.28
Unknown	0	203		5	
TOTAL	15,491,878	15,712	10.14	739	0.48

NOTE: Drivers 20 to 24 years of age who had been drinking had the highest rate per 10,000 licensed drivers of crash involvement (25.43) and the highest rate in fatal crashes (1.36).

* Does not include drivers of bicycles, mopeds, ATVs, or trains in "all crashes" and in "fatal crashes" categories on both tables.

Selected Age Groups*

2006 Florida Traffic Crash Statistics

TABLE 6
Crash Rates for Florida Resident Drivers
In Crashes for a Selected Age Group (15 - 29)

Age of Driver	Driver Licenses Issued	Drivers in All Crashes	Rate Per 10,000 Licensed Drivers	Drivers in Fatal Crashes	Rate Per 10,000 Licensed Drivers
15	76,238	564	73.98	6	0.79
16	142,082	5,122	360.50	44	3.10
17	173,701	8,356	481.06	88	5.07
18	202,364	11,672	576.78	153	7.56
19	220,416	11,312	513.21	126	5.72
20	231,789	10,852	468.18	121	5.22
21	247,066	10,466	423.61	143	5.79
22	257,060	9,839	382.75	137	5.33
23	260,841	9,244	354.39	133	5.10
24	272,191	9,136	335.65	130	4.78
25	277,454	8,344	300.73	111	4.00
26	282,172	8,042	285.00	103	3.65
27	276,951	7,490	270.44	83	3.00
28	271,784	7,104	261.38	98	3.61
29	271,195	7,049	259.92	94	3.47

NOTE: Drivers 18 years of age had the highest rate of crash involvement in all crashes (576.78) and in fatal crashes (7.56).

TABLE 6A
Crash Rates for Florida Resident Drivers
In Crashes for a Selected Age Group (70 - 90+)

Age of Driver	Driver Licenses Issued	Drivers in All Crashes	Rate Per 10,000 Licensed Drivers	Drivers in Fatal Crashes	Rate Per 10,000 Licensed Drivers
70	143,580	1,578	109.90	26	1.81
71	137,538	1,448	105.28	16	1.16
72	131,252	1,366	104.07	21	1.60
73	122,021	1,268	103.92	23	1.88
74	124,272	1,255	100.99	18	1.45
75	117,814	1,230	104.40	17	1.44
76	119,027	1,146	96.28	25	2.10
77	109,909	1,143	104.00	23	2.09
78	108,598	1,184	109.03	20	1.84
79	101,854	1,045	102.60	20	1.96
80	94,657	922	97.40	17	1.80
81	86,460	944	109.18	22	2.54
82	81,373	775	95.24	14	1.72
83	70,719	712	100.68	10	1.41
84	64,393	625	97.06	11	1.71
85	56,843	557	97.99	12	2.11
86	49,166	467	94.98	17	3.46
87	37,344	350	93.72	5	1.34
88	33,063	305	92.25	14	4.23
89	25,196	212	84.14	9	3.57
90+	71,187	569	79.93	18	2.53

NOTE: Drivers 70 years of age have the highest rate of crash involvement in all crashes (109.90) but 88 year old drivers had the highest rate of involvement in fatal crashes (4.23).

* Does not include drivers of bicycles, mopeds, ATVs, or trains in "all crashes" and in "fatal crashes" categories on both tables.

Selected Age Groups*

2006 Florida Traffic Crash Statistics

TABLE 7
Crash Rates for Florida Resident Drinking Drivers
In Crashes for a Selected Age Group (15 - 29)

Age of Driver	Driver Licenses Issued	Drinking Drivers in All Crashes	Rate Per 10,000 Licensed Drivers	Drinking Drivers in Fatal Crashes	Rate Per 10,000 Licensed Drivers
15	76,238	19	2.49	1	0.13
16	142,082	65	4.57	2	0.14
17	173,701	163	9.38	7	0.40
18	202,364	374	18.48	22	1.09
19	220,416	469	21.28	26	1.18
20	231,789	517	22.30	27	1.16
21	247,066	766	31.00	42	1.70
22	257,060	692	26.92	38	1.48
23	260,841	637	24.42	33	1.27
24	272,191	615	22.59	33	1.21
25	277,454	553	19.93	26	0.94
26	282,172	540	19.14	26	0.92
27	276,951	448	16.18	17	0.61
28	271,784	398	14.64	20	0.74
29	271,195	365	13.46	24	0.88

NOTE: 21 year old drinking drivers had the highest involvement rate in all crashes (31.00) and in fatal crashes (1.70).

TABLE 7A
Crash Rates for Florida Resident Drinking Drivers
In Crashes for a Selected Age Group (70 - 90+)

Age of Driver	Driver Licenses Issued	Drinking Drivers in All Crashes	Rate Per 10,000 Licensed Drivers	Drinking Drivers in Fatal Crashes	Rate Per 10,000 Licensed Drivers
70	143,580	25	1.74	1	0.07
71	137,538	33	2.40	0	0.00
72	131,252	28	2.13	1	0.08
73	122,021	20	1.64	4	0.33
74	124,272	16	1.29	0	0.00
75	117,814	18	1.53	3	0.25
76	119,027	15	1.26	2	0.17
77	109,909	18	1.64	1	0.09
78	108,598	16	1.47	0	0.00
79	101,854	5	0.49	0	0.00
80	94,657	7	0.74	1	0.11
81	86,460	16	1.85	0	0.00
82	81,373	1	0.12	0	0.00
83	70,719	8	1.13	0	0.00
84	64,393	5	0.78	0	0.00
85	56,843	3	0.53	0	0.00
86	49,166	1	0.20	0	0.00
87	37,344	3	0.80	0	0.00
88	33,063	4	1.21	1	0.30
89	25,196	1	0.40	0	0.00
90+	71,187	8	1.12	2	0.28

NOTE: 71 year old drinking drivers had the highest involvement rate in all crashes (2.40) and the 73 year old drinking drivers had the highest involvement rate in fatal crashes (.33).

* Does not include drivers of bicycles, mopeds, ATVs, or trains in "all crashes" and in "fatal crashes" categories on both tables.

TABLE 8 Drivers Killed or Injured By Residence and Gender

Residence	Male				Female				Unknown Gender			
	Killed	% Killed	Injured	% Injured	Killed	% Killed	Injured	% Injured	Killed	% Killed	Injured	% Injured
County of Crash	1,237	73.59	59,699	77.60	345	74.35	56,411	83.05	1	100.00	22	3.20
Non-Resident of County	349	20.76	12,741	16.56	98	21.12	9,335	13.74	0	0.00	1	0.15
Non-Resident of State	78	4.64	3,304	4.29	21	4.53	1,815	2.67	0	0.00	0	0.00
Foreign	5	0.30	390	0.51	0	0.00	150	0.22	0	0.00	0	0.00
Unknown	12	0.71	795	1.03	0	0.00	213	0.31	0	0.00	665	96.66
Total	1,681	100	76,929	100	464	100	67,924	100	1	0	688	100

TABLE 8A Drivers Killed or Injured By Residence

Residence	All Drivers Involved	% All	Drivers Killed	% Killed	Drivers Injured	% Injured
County of Crash	291,078	78.66	1,583	73.77	116,132	79.79
Non-Resident of County	58,154	15.72	447	20.83	22,077	15.17
Non-Resident of State	15,554	4.20	99	4.61	5,119	3.52
Foreign	1,802	0.49	5	0.23	540	0.37
Unknown	3,447	0.93	12	0.56	1,673	1.15
Total	370,035	100	2,146	100	145,541	100

TABLE 9 Drivers Killed or Injured By Age Groups

Age	All Drivers Involved	% All	Drivers Killed	% Killed	Drivers Injured	% Injured
Under 15	1,494	0.40	10	0.47	1,196	0.82
15	772	0.21	7	0.33	430	0.30
16	5,367	1.45	17	0.79	2,049	1.41
17	8,616	2.33	32	1.49	3,355	2.31
18	12,181	3.29	65	3.03	4,889	3.36
19	11,889	3.21	70	3.26	4,771	3.28
20	11,444	3.09	51	2.38	4,649	3.19
21 - 24	41,048	11.09	297	13.84	16,421	11.28
25 - 34	75,303	20.35	380	17.71	28,814	19.80
35 - 44	71,315	19.27	340	15.84	26,805	18.42
45 - 54	57,978	15.67	324	15.10	22,569	15.51
55 - 64	35,265	9.53	212	9.88	14,060	9.66
65 - 74	17,840	4.82	145	6.76	7,255	4.98
75 - 84	10,538	2.85	119	5.55	4,373	3.00
85-89	2,000	0.54	41	1.91	878	0.60
90+	613	0.17	17	0.79	246	0.17
Unknown	6,372	1.72	19	0.89	2,781	1.91
Total	370,035	100	2,146	100	145,541	100

* Includes bicycle drivers on all three tables.

Persons in Crashes by Age and Gender

2006 Florida Traffic Crash Statistics

TABLE 10

Persons Killed

Age Groups	Total Killed	Drivers				Motorcyclists*				Bicyclists*				Passengers				Pedestrians			
		Total	Male	Female	Unk	Total	Male	Female	Unk	Total	Male	Female	Unk	Total	Male	Female	Unk	Total	Male	Female	Unk
0 - 4	30	0	0	0	0	0	0	0	0	0	0	0	0	20	8	12	0	10	8	2	0
5 - 9	28	0	0	0	0	0	0	0	0	4	4	0	0	17	7	10	0	7	6	1	0
10 - 14	44	2	2	0	0	1	1	0	0	3	2	1	0	30	8	22	0	8	6	2	0
15	24	5	3	2	0	0	0	0	0	2	2	0	0	11	8	3	0	6	6	0	0
16	42	16	12	4	0	0	0	0	0	1	1	0	0	19	8	11	0	6	3	3	0
17	51	30	21	9	0	2	2	0	0	0	0	0	0	17	7	10	0	2	1	1	0
18	93	48	41	7	0	16	16	0	0	1	1	0	0	23	18	5	0	5	2	3	0
19	105	55	45	10	0	15	15	0	0	0	0	0	0	28	17	11	0	7	5	2	0
20	84	36	28	8	0	13	13	0	0	2	2	0	0	29	19	10	0	4	4	0	0
21 - 24	412	195	145	50	0	95	95	0	0	7	7	0	0	88	57	31	0	27	23	4	0
25 - 34	549	249	189	60	0	118	115	3	0	13	12	1	0	100	67	33	0	69	55	14	0
35 - 44	501	222	148	74	0	90	87	3	0	28	26	2	0	73	38	35	0	88	63	25	0
45 - 54	483	216	157	58	1	84	77	7	0	24	22	2	0	47	18	29	0	112	91	21	0
55 - 64	339	137	89	48	0	56	54	2	0	19	19	0	0	50	17	33	0	77	54	23	0
65 - 74	217	116	73	43	0	20	18	2	0	9	9	0	0	39	12	27	0	33	23	10	0
75 - 84	196	107	64	43	0	5	5	0	0	7	5	2	0	36	9	27	0	41	22	19	0
85-89	60	40	23	17	0	0	0	0	0	1	0	1	0	11	5	6	0	8	3	5	0
90+	29	17	14	3	0	0	0	0	0	0	0	0	0	10	2	8	0	2	2	0	0
Unknown	78	10	8	2	0	6	6	0	0	3	3	0	0	25	18	7	0	34	27	7	0
Total	3,365	1,501	1,062	438	1	521	504	17	0	124	115	9	0	673	343	330	0	546	404	142	0

* Passengers of Motorcycles and Bicycles are included in the Passengers' columns.

Persons in Crashes by Age and Gender

2006 Florida Traffic Crash Statistics

TABLE 11 **Persons Injured**

Age Groups	Total Injured	Drivers				Motorcyclists*				Bicyclists*				Passengers				Pedestrians			
		Total	Male	Female	Unk	Total	Male	Female	Unk	Total	Male	Female	Unk	Total	Male	Female	Unk	Total	Male	Female	Unk
0 - 4	3,889	25	13	12	0	2	2	0	0	7	6	1	0	3,661	1,823	1,838	0	194	120	74	0
5 - 9	4,910	95	56	39	0	6	6	0	0	190	151	39	0	4,247	2,070	2,177	0	372	242	127	3
10 - 14	6,409	287	193	94	0	63	53	10	0	521	412	109	0	4,968	2,147	2,821	0	570	345	224	1
15	2,411	260	160	100	0	30	25	5	0	140	121	19	0	1,775	697	1,078	0	206	131	75	0
16	4,386	1,905	908	997	0	35	31	4	0	109	88	21	0	2,157	916	1,241	0	180	94	86	0
17	5,708	3,164	1,549	1,615	0	98	90	8	0	93	76	17	0	2,177	960	1,217	0	176	102	74	0
18	7,245	4,626	2,294	2,332	0	166	150	16	0	97	77	20	0	2,189	989	1,200	0	167	93	74	0
19	6,849	4,421	2,149	2,272	0	250	241	9	0	100	78	22	0	1,917	850	1,067	0	161	97	63	1
20	6,474	4,267	2,075	2,192	0	289	269	20	0	93	70	23	0	1,693	778	915	0	132	77	55	0
21 - 24	22,462	15,062	7,328	7,732	2	1,090	1,044	46	0	269	209	60	0	5,493	2,662	2,831	0	548	338	208	2
25 - 34	37,625	26,670	13,148	13,516	6	1,601	1,515	86	0	543	432	111	0	7,835	3,556	4,279	0	976	634	338	4
35 - 44	33,689	24,543	11,995	12,548	0	1,558	1,407	151	0	704	557	147	0	5,758	2,309	3,449	0	1,126	678	445	3
45 - 54	28,631	20,354	9,927	10,426	1	1,534	1,362	171	1	681	554	127	0	4,924	1,548	3,376	0	1,138	697	436	5
55 - 64	18,174	12,945	6,617	6,328	0	806	764	42	0	309	257	52	0	3,423	881	2,542	0	691	388	300	3
65 - 74	10,257	6,897	3,750	3,147	0	204	196	8	0	154	133	21	0	2,558	642	1,916	0	444	249	194	1
75 - 84	6,480	4,273	2,269	2,004	0	39	37	2	0	61	50	11	0	1,775	414	1,361	0	332	157	174	1
85-89	1,361	857	429	428	0	5	5	0	0	16	13	3	0	394	131	263	0	89	42	47	0
90+	470	239	122	117	0	2	2	0	0	5	4	1	0	177	55	122	0	47	25	22	0
Unknown	7,484	2,490	1,212	618	660	156	135	7	14	135	113	18	4	4,498	1,881	2,617	0	205	144	59	2
Total	214,914	133,380	66,194	66,517	669	7,934	7,334	585	15	4,227	3,401	822	4	61,619	25,309	36,310	0	7,754	4,653	3,075	26

* Passengers of Motorcycles and Bicycles are included in the Passengers' columns.

Pedestrian Behavior

2006 Florida Traffic Crash Statistics

TABLE 12 Pedestrians Killed in Crashes By Age and Type of Actions

Age Group	Pedestrian Actions																				Total Killed		
	Cross Not at Intersection	%	Cross at Mid-Block Intersection	%	Cross at Intersection	%	Walk Along Road With Traffic	%	Walk Along Road Against Traffic	%	Working on Veh. in Road	%	Working in Road	%	Standing or Playing in Road	%	Standing in Pedestrian Island	%	All Other	%		Unk	%
0 - 4	4	1.69	0	0.00	0	0.00	0	0.00	0	0.00	0	0.00	0	0.00	3	8.33	0	0.00	3	3.19	0	0.00	10
5 - 9	0	0.00	1	7.69	0	0.00	1	2.56	0	0.00	0	0.00	0	0.00	1	2.78	0	0.00	4	4.26	0	0.00	7
10 - 14	3	1.27	0	0.00	2	2.50	1	2.56	0	0.00	0	0.00	0	0.00	2	5.56	0	0.00	0	0.00	0	0.00	8
15 - 19	13	5.49	1	7.69	3	3.75	1	2.56	0	0.00	0	0.00	0	0.00	2	5.56	0	0.00	4	4.26	2	7.14	26
20 - 24	9	3.80	1	7.69	4	5.00	3	7.69	0	0.00	1	33.33	0	0.00	2	5.56	0	0.00	10	10.64	1	3.57	31
25 - 34	36	15.19	1	7.69	4	5.00	6	15.38	2	20.00	0	0.00	1	16.67	6	16.67	0	0.00	9	9.57	4	14.29	69
35 - 44	35	14.77	1	7.69	14	17.50	9	23.08	3	30.00	0	0.00	2	33.33	8	22.22	0	0.00	11	11.70	5	17.86	88
45 - 54	47	19.83	2	15.38	16	20.00	7	17.95	2	20.00	1	33.33	0	0.00	5	13.89	0	0.00	23	24.47	9	32.14	112
55 - 64	39	16.46	1	7.69	13	16.25	2	5.13	1	10.00	1	33.33	1	16.67	4	11.11	0	0.00	11	11.70	4	14.29	77
65 - 74	16	6.75	1	7.69	6	7.50	2	5.13	1	10.00	0	0.00	1	16.67	0	0.00	0	0.00	6	6.38	0	0.00	33
75 - 84	16	6.75	3	23.08	13	16.25	2	5.13	1	10.00	0	0.00	0	0.00	1	2.78	0	0.00	4	4.26	1	3.57	41
85-89	5	2.11	0	0.00	1	1.25	0	0.00	0	0.00	0	0.00	1	16.67	1	2.78	0	0.00	0	0.00	0	0.00	8
90+	1	0.42	0	0.00	1	1.25	0	0.00	0	0.00	0	0.00	0	0.00	0	0.00	0	0.00	0	0.00	0	0.00	2
Unknown	13	5.49	1	7.69	3	3.75	5	12.82	0	0.00	0	0.00	0	0.00	1	2.78	0	0.00	9	9.57	2	7.14	34
Total	237	100	13	100	80	100	39	100	10	100	3	100	6	100	36	100	0	0	94	100	28	100	546

Pedestrian Behavior

2006 Florida Traffic Crash Statistics

TABLE 13 Pedestrians Injured in Crashes By Age and Type of Actions

Age Group	Pedestrian Actions																						Total Injured
	Cross Not at Intersection	%	Cross at Mid-Block Intersection	%	Cross at Intersection	%	Walk Along Road With Traffic	%	Walk Along Road Against Traffic	%	Working on Veh. in Road	%	Working in Road	%	Standing or Playing in Road	%	Standing in Pedestrian Island	%	All Other	%	Unk	%	
0 - 4	46	2.51	1	0.39	13	1.05	2	0.44	0	0.00	0	0.00	0	0.00	30	7.89	0	0.00	86	3.12	16	3.30	194
5 - 9	120	6.54	10	3.91	39	3.15	8	1.76	1	0.60	0	0.00	2	1.65	48	12.63	2	6.90	113	4.10	29	5.98	372
10 - 14	172	9.37	30	11.72	114	9.19	28	6.17	16	9.52	0	0.00	0	0.00	26	6.84	3	10.34	140	5.08	41	8.45	570
15 - 19	210	11.44	36	14.06	148	11.94	90	19.82	25	14.88	3	9.38	3	2.48	61	16.05	1	3.45	265	9.62	48	9.90	890
20 - 24	144	7.85	20	7.81	113	9.11	44	9.69	17	10.12	5	15.63	16	13.22	38	10.00	5	17.24	235	8.53	43	8.87	680
25 - 34	194	10.57	28	10.94	118	9.52	66	14.54	18	10.71	3	9.38	26	21.49	44	11.58	2	6.90	423	15.36	54	11.13	976
35 - 44	268	14.60	25	9.77	157	12.66	75	16.52	33	19.64	11	34.38	36	29.75	54	14.21	6	20.69	385	13.98	76	15.67	1,126
45 - 54	263	14.33	27	10.55	203	16.37	70	15.42	16	9.52	3	9.38	20	16.53	44	11.58	2	6.90	419	15.21	71	14.64	1,138
55 - 64	164	8.94	29	11.33	156	12.58	17	3.74	17	10.12	4	12.50	6	4.96	13	3.42	6	20.69	243	8.82	36	7.42	691
65 - 74	96	5.23	24	9.38	77	6.21	29	6.39	10	5.95	2	6.25	5	4.13	9	2.37	0	0.00	167	6.06	25	5.15	444
75 - 84	71	3.87	11	4.30	60	4.84	15	3.30	6	3.57	0	0.00	2	1.65	4	1.05	1	3.45	137	4.97	25	5.15	332
85-89	16	0.87	2	0.78	9	0.73	4	0.88	3	1.79	0	0.00	1	0.83	2	0.53	1	3.45	40	1.45	11	2.27	89
90+	11	0.60	4	1.56	8	0.65	0	0.00	0	0.00	0	0.00	1	0.83	0	0.00	0	0.00	22	0.80	1	0.21	47
Unknown	60	3.27	9	3.52	25	2.02	6	1.32	6	3.57	1	3.13	3	2.48	7	1.84	0	0.00	79	2.87	9	1.86	205
Total	1,835	100	256	100	1,240	100	454	100	168	100	32	100	121	100	380	100	29	100	2,754	100	485	100	7,754

Pedestrian Behavior

2006 Florida Traffic Crash Statistics

TABLE 14 Pedestrians in Crashes By Age
and Percent Drinking

Age Group	Number Pedestrians	Number Drinking	Percent Drinking
0 - 4	225	0	0.00
5 - 9	391	3	0.77
10 - 14	611	3	0.49
15 - 19	975	32	3.28
20 - 24	780	128	16.41
25 - 29	597	93	15.58
30 - 34	527	80	15.18
35 - 39	562	91	16.19
40 - 44	727	156	21.46
45 - 49	711	139	19.55
50 - 54	602	103	17.11
55 - 59	468	57	12.18
60 - 64	336	31	9.23
65 - 69	283	12	4.24
70 - 74	208	14	6.73
75 - 79	207	7	3.38
80 - 84	176	0	0.00
85-89	99	3	3.03
90+	51	2	3.92
Unknown	303	47	15.51
Total	8,839	1,001	11.32

TABLE 15 Pedestrians in Crashes By Injury
Severity and Percent Drinking

Injury Severity	Number Pedestrians	Number Drinking	Percent Drinking
No Injury	468	42	8.97
Possible Injury	2,392	139	5.81
Non-Incapacitating Injury	3,457	328	9.49
Incapacitating Injury	1,905	293	15.38
Fatal Injury	546	186	34.07
Non-Traffic Fatality	34	11	32.35
Unknown	37	2	5.41
Total	8,839	1,001	11.32

NOTE: Drinking is a major problem with pedestrians in traffic crashes. 11.32% (1,001) of all pedestrians in crashes (8,839) had been drinking and 34.07% (186) of all pedestrian fatalities (546) had been drinking.

CHART 4

**Pedestrians Killed
1997 Through 2006**

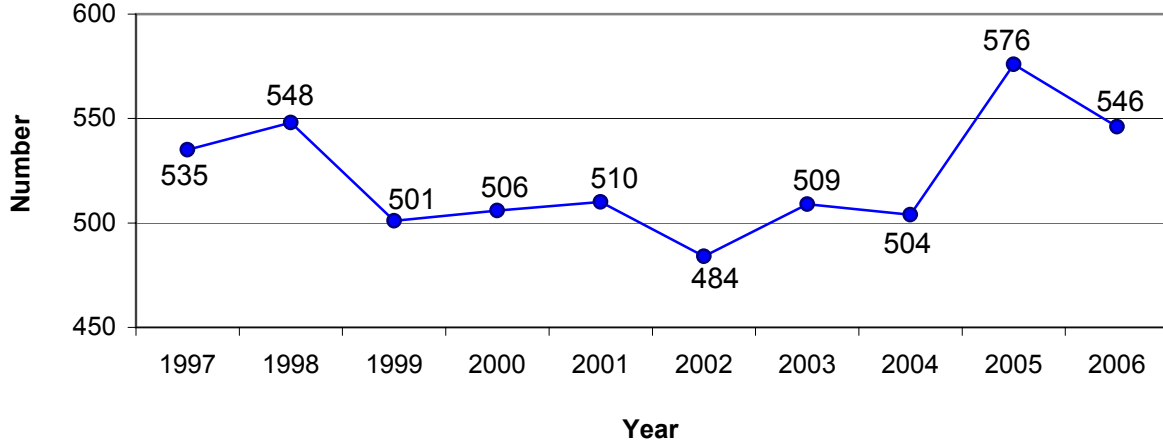


CHART 5

**Pedestrians Injured
1997 Through 2006**

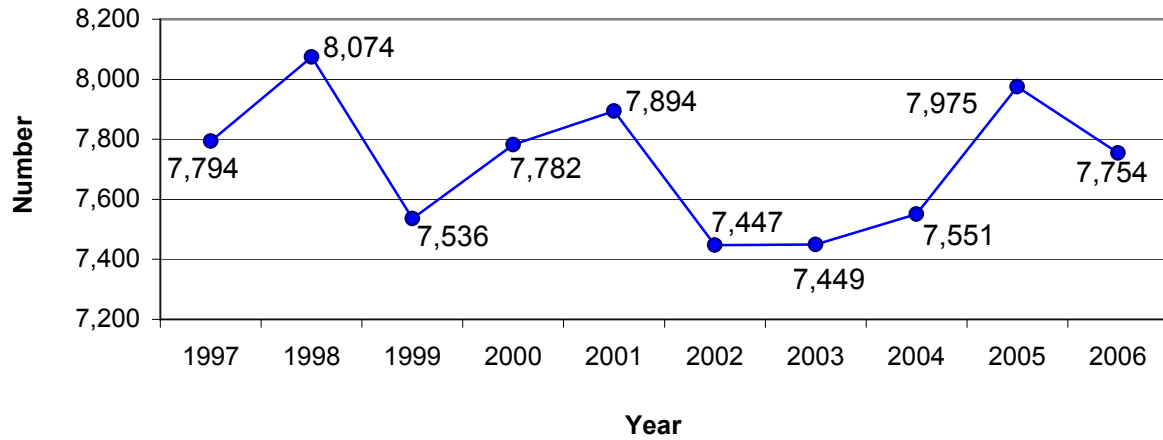
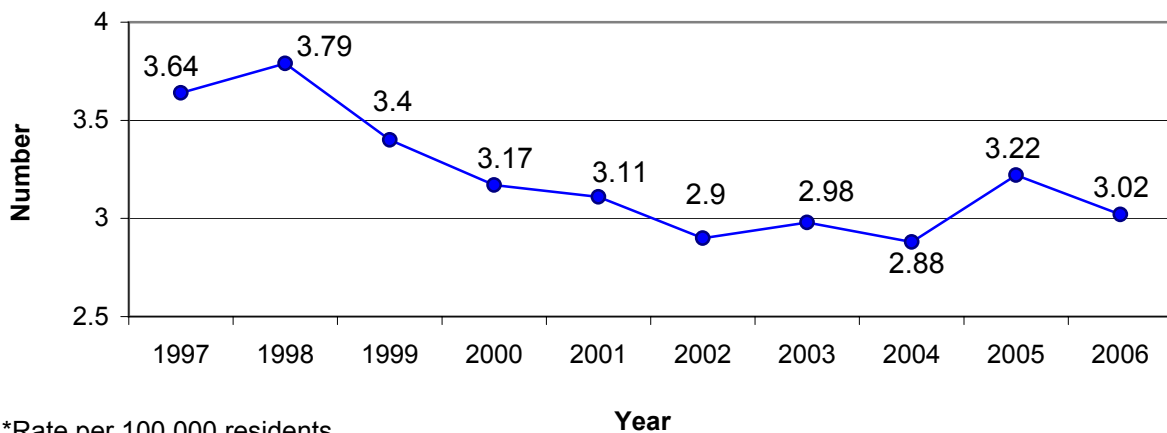


CHART 6

**Pedestrian Fatality Rate*
1997 Through 2006**



*Rate per 100,000 residents.

Truck Passengers

2006 Florida Traffic Crash Statistics

TABLE 16 Passengers Riding in Beds of Trucks by Age and Truck Types

Age Groups	Light (Pickup) Trucks				All Types of Trucks*			
	Killed	%	Injured	%	Killed	%	Injured	%
0-4	0	0.00	10	4.39	0	0.00	10	3.76
5-9	0	0.00	18	7.89	0	0.00	18	6.77
10-14	0	0.00	24	10.53	0	0.00	24	9.02
15-19	2	25.00	58	25.44	2	25.00	63	23.68
20-24	1	12.50	35	15.35	1	12.50	42	15.79
25-34	1	12.50	32	14.04	1	12.50	38	14.29
35-44	2	25.00	24	10.53	2	25.00	36	13.53
45-54	1	12.50	13	5.70	1	12.50	16	6.02
55-64	0	0.00	1	0.44	0	0.00	3	1.13
65-74	1	12.50	4	1.75	1	12.50	4	1.50
75-84	0	0.00	0	0.00	0	0.00	0	0.00
85-89	0	0.00	0	0.00	0	0.00	0	0.00
90+	0	0.00	0	0.00	0	0.00	0	0.00
Unknown	0	0.00	9	3.95	0	0.00	12	4.51
TOTAL	8	100	228	100	8	100	266	100

* All Types of Trucks include light (pickup), medium, and heavy trucks. It does not include truck-tractor (cab).

Florida Motoring Environment

2006 Florida Traffic Crash Statistics

TABLE 17

Year	Licensed Drivers	Registered Vehicles ++	Vehicle Miles*	Crashes	Non-Fatal Injuries	Deaths	Mileage Death Rate**
1987	10,241,063	11,738,273	92,865	240,429	215,886	2,891	3.11
1988	10,648,019	11,997,948	105,030	256,543	230,738	3,152	3.00
1989	11,109,288	12,276,272	108,876	252,439	230,060	3,033	2.79
1990	11,612,402	12,465,790	109,997	216,245	214,208	2,951	2.68
1991	12,170,821	11,184,146+	113,484	195,312	195,122	2,523	2.22
1992	11,550,126	11,205,298	114,000	196,176	205,432	2,480	2.18
1993	11,767,409	11,159,938	119,768	199,039	212,497	2,719	2.27
1994	11,992,578	11,393,982	120,929	206,183	223,458	2,722	2.25
1995	12,019,156	11,557,811	127,800	228,589	233,900	2,847	2.23
1996	12,343,598	12,003,930	129,637	241,377	243,320	2,806	2.16
1997	12,691,835	12,170,375	133,276	240,639	240,001	2,811	2.11
1998	13,012,132	11,277,808	136,680	245,440	241,863	2,889	2.11
1999	13,398,895	11,611,993	140,868	243,409	232,225	2,920	2.07
2000	14,041,846	11,948,485	149,857	246,541	231,588	2,999	2.00
2001	14,346,373	13,448,202	171,029	256,169	234,600	3,013	1.76
2002	14,604,720	12,989,278	178,680	250,470	229,611	3,143	1.76
2003	14,847,416	14,080,886	185,642	243,294	221,639	3,179	1.71
2004	15,007,005	14,512,264	196,722	252,902	227,192	3,257	1.66
2005	15,272,680	15,062,993	200,974	268,605	233,930	3,533	1.76
2006	15,491,878	15,612,161	203,783	256,200	214,914	3,365	1.65

* In Millions

** Per 100 Million Vehicle Miles of Travel

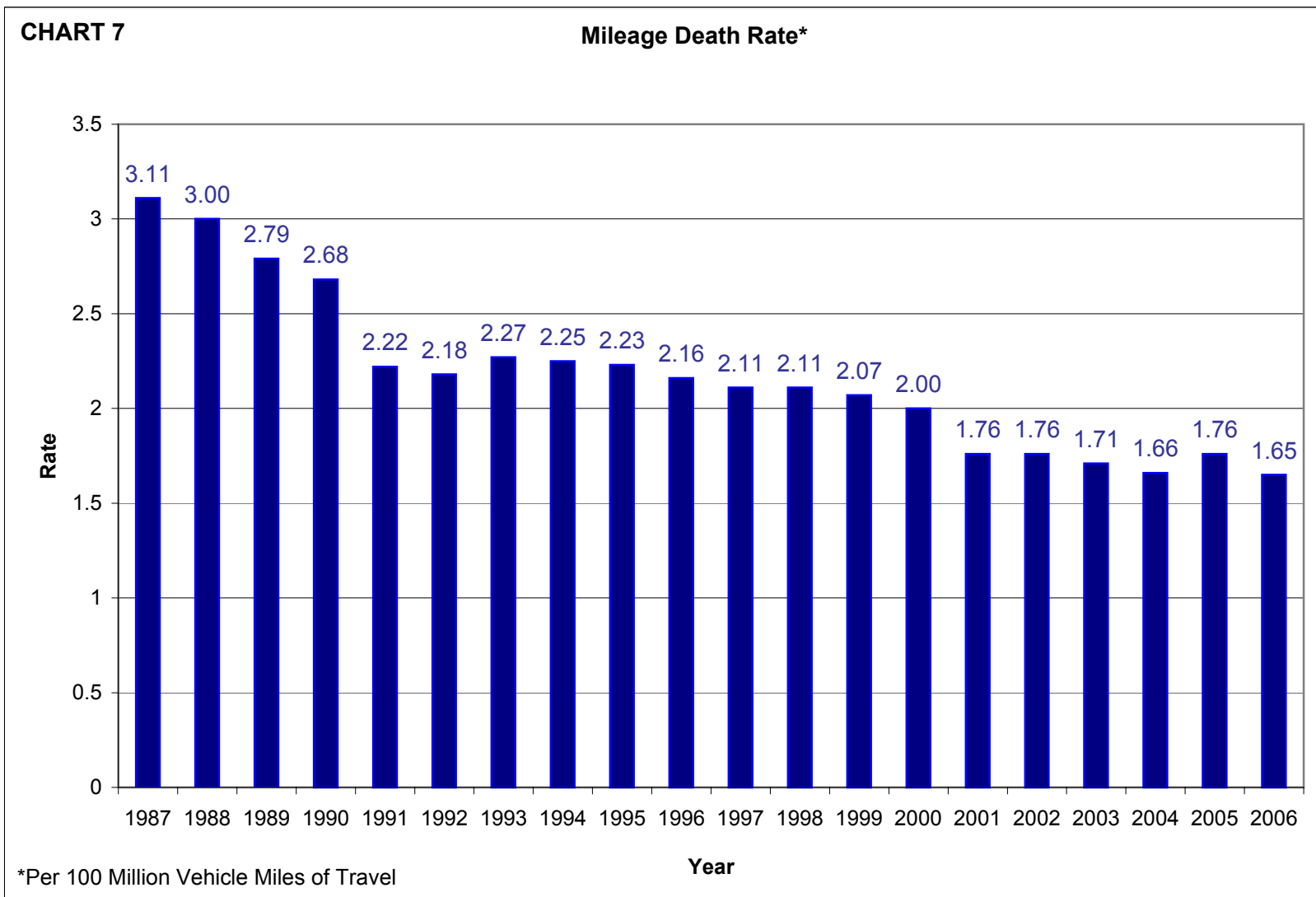
+ Decrease Reflects Change in Accounting Method

++ Beginning in Year 1998, Does Not Include Count of Trailers with Tags

NOTE: All 1992 data in this publication has been updated from preliminary figures published in the *Department of Highway Safety and Motor Vehicles Traffic Crash Data, 1992*. Figures from the 1992 publication should not be used for year-to-year comparisons.

Mileage Death Rate

2006 Florida Traffic Crash Statistics



Holiday Traffic Fatalities

2006 Florida Traffic Crash Statistics

TABLE 18

HOLIDAY PERIOD		2002	2003	2004	2005	2006
New Year	Hours	96	48	48	72	96
	Fatalities	33	20	25	38	34
	Rate*	0.34	0.42	0.52	0.53	0.35
	Alcohol Related Fatalities	7	11	11	14	12
Memorial Day	Hours	96	96	96	96	96
	Fatalities	30	46	41	44	54
	Rate*	0.31	0.48	0.43	0.46	0.56
	Alcohol Related Fatalities	8	24	17	15	32
Independence Day	Hours	48	96	96	96	120
	Fatalities	7	30	42	31	48
	Rate*	0.15	0.31	0.44	0.32	0.40
	Alcohol Related Fatalities	4	14	14	13	27
Labor Day	Hours	96	96	96	96	96
	Fatalities	42	36	23	44	24
	Rate*	0.44	0.38	0.24	0.46	0.25
	Alcohol Related Fatalities	18	17	7	23	9
Thanksgiving	Hours	120	120	120	120	120
	Fatalities	49	48	55	66	48
	Rate*	0.41	0.40	0.46	0.55	0.40
	Alcohol Related Fatalities	22	14	24	30	20
Christmas	Hours	48	48	72	96	96
	Fatalities	19	18	33	40	45
	Rate*	0.40	0.38	0.46	0.42	0.47
	Alcohol Related Fatalities	3	4	15	15	17
All Days in Year	Hours	8,760	8,760	8,784	8,760	8,760
	Fatalities	3,143	3,179	3,257	3,533	3,365
	Rate*	0.36	0.36	0.37	0.40	0.38
	Alcohol Related Fatalities	1,007	1,096	1,093	1,239	1,099

* Fatalities Per Hour

NOTE: Memorial Day 2006 Holiday experienced the highest fatality rate per hour (0.56) with 54 people killed in the 96 hour holiday period. 59.3% (32) of these fatalities had alcohol involved in the crash.

Traffic Crashes by Day of Week/Time of Day

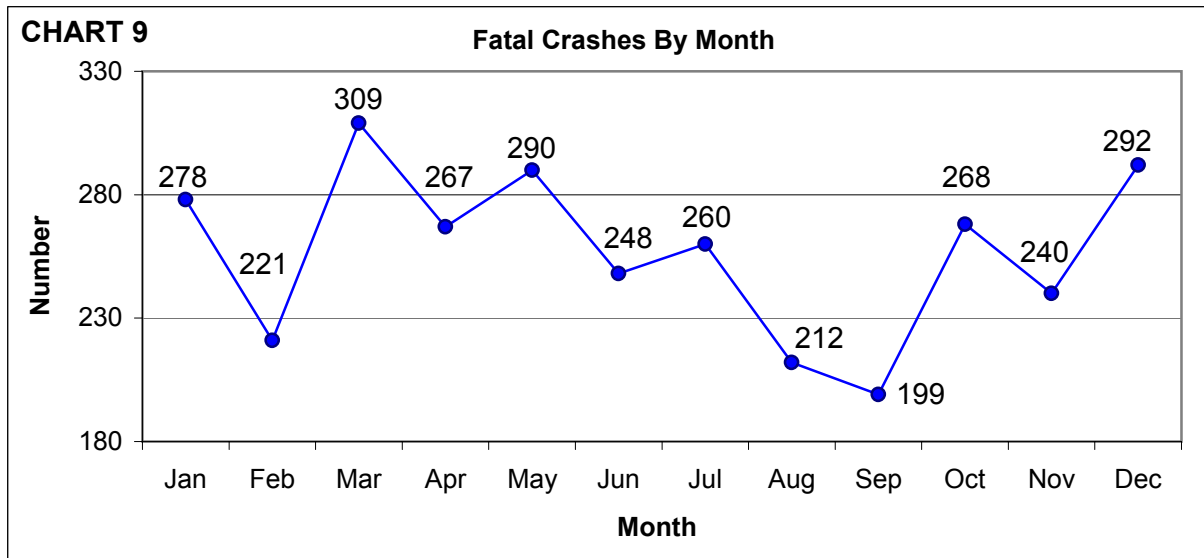
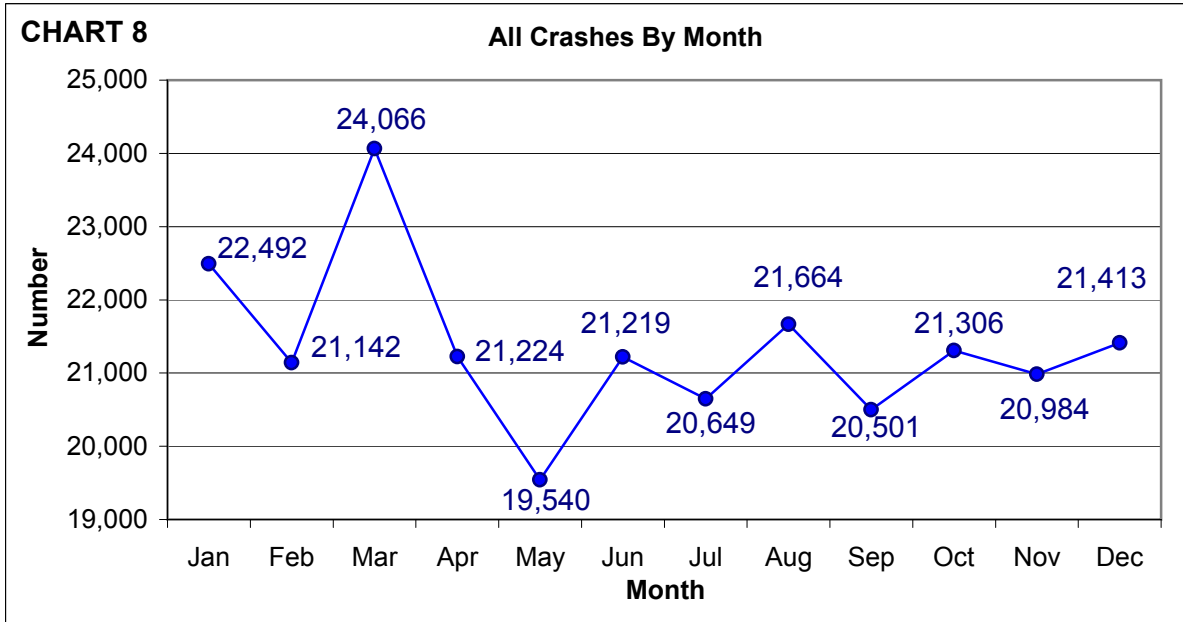
2006 Florida Traffic Crash Statistics

Motor Vehicle Crashes by Day of Week and Time of Day

TABLE 19

Time of Crash Hour Beginning	Total		Monday		Tuesday		Wednesday		Thursday		Friday		Saturday		Sunday		
	All	Fatal	All	Fatal	All	Fatal	All	Fatal	All	Fatal	All	Fatal	All	Fatal	All	Fatal	
Before noon	Midnight	6,660	134	721	17	605	14	653	7	733	12	883	16	1,601	36	1,464	32
	1:00	5,463	125	552	8	435	16	461	11	575	12	685	14	1,315	28	1,440	36
	2:00	5,757	150	463	13	429	6	452	9	557	16	730	18	1,561	40	1,565	48
	3:00	4,143	93	364	9	299	7	353	8	426	9	485	18	1,059	22	1,157	20
	4:00	3,265	82	338	8	257	3	244	9	294	4	412	9	831	25	889	24
	5:00	3,492	90	454	14	387	14	394	10	436	8	452	19	665	12	704	13
	6:00	6,864	132	1,138	28	1,110	13	1,126	19	1,157	25	1,040	8	712	23	581	16
	7:00	10,837	76	1,854	15	1,907	10	1,902	14	2,024	12	1,785	8	771	10	594	7
	8:00	11,287	78	1,825	11	2,065	24	1,989	11	1,928	9	1,862	12	939	4	679	7
	9:00	9,613	83	1,528	17	1,548	14	1,481	10	1,529	7	1,511	10	1,192	8	824	17
	10:00	10,081	98	1,540	14	1,529	15	1,468	8	1,448	15	1,665	12	1,462	23	969	11
11:00	11,461	111	1,637	10	1,677	15	1,691	15	1,564	14	1,845	18	1,787	23	1,260	16	
After noon	Noon	13,538	108	1,955	20	1,926	10	1,994	13	1,947	11	2,169	14	1,966	22	1,581	18
	1:00	13,993	130	1,958	18	2,062	9	2,012	22	2,096	20	2,230	20	2,060	20	1,575	21
	2:00	15,551	122	2,314	10	2,273	26	2,247	14	2,314	17	2,520	20	2,060	13	1,823	22
	3:00	17,489	142	2,668	18	2,597	13	2,542	20	2,689	22	3,018	32	2,186	19	1,789	18
	4:00	18,020	150	2,750	13	2,792	20	2,589	14	2,711	28	3,156	22	2,136	27	1,886	26
	5:00	18,550	124	2,782	8	2,969	17	2,878	18	2,885	22	3,294	14	1,957	20	1,785	25
	6:00	15,824	177	2,227	21	2,301	20	2,269	25	2,271	25	2,721	29	2,139	30	1,896	27
	7:00	12,362	180	1,566	20	1,635	23	1,582	23	1,758	23	2,080	28	1,955	30	1,786	33
	8:00	10,543	183	1,392	35	1,285	17	1,388	22	1,360	16	1,833	31	1,718	32	1,567	30
	9:00	10,099	201	1,223	22	1,232	24	1,285	30	1,368	21	1,847	30	1,769	38	1,375	36
	10:00	8,786	155	941	12	981	13	993	18	1,196	25	1,785	35	1,688	23	1,202	29
	11:00	7,468	132	744	13	743	16	808	11	996	18	1,654	25	1,540	25	983	24
	Not Stated	5,054	28	709	1	649	2	695	1	711	3	743	4	796	9	751	8
Total	256,200	3,084	35,643	375	35,693	361	35,496	362	36,973	394	42,405	466	37,865	562	32,125	564	

NOTE: Friday, during the 5 p.m. hour, had the highest number of all types of crashes (3,294). Sunday, during the 2 a.m. hour, had the highest number of fatal crashes (48). Saturday, during the 2 a.m. hour, came in second with 40 fatal crashes in Florida.



Contributing Causes*

2006 Florida Traffic Crash Statistics

TABLE 20 Contributing Causes of Drivers in Crashes

Contributing Cause	Type of Crash					
	Fatal	%	Injury	%	Vehicle and/or Property Damage Only	%
Careless Driving	1,102	26.33	52,439	37.12	18,345	36.36
Failed/Yield Right-of-Way	444	10.61	26,439	18.71	6,822	13.52
Improper Backing	3	0.07	1,577	1.12	1,224	2.43
Improper Lane Change	86	2.05	4,155	2.94	1,785	3.54
Improper Turn	67	1.60	4,674	3.31	1,549	3.07
Alcohol-Under Influence	517	12.35	3,644	2.58	3,468	6.87
Drugs-Under Influence	156	3.73	316	0.22	298	0.59
Alcohol & Drugs-Under Influence	142	3.39	570	0.40	554	1.10
Followed Too Closely	8	0.19	5,795	4.10	1,933	3.83
Disregarded Traffic Signal	123	2.94	5,844	4.14	1,419	2.81
Exceeded Safe Speed Limit	291	6.95	3,894	2.76	1,067	2.12
Exceeded Stated Speed Limit	68	1.62	2,553	1.81	631	1.25
Disregarded Stop Sign	43	1.03	1,306	0.92	628	1.24
Failed to Maintain Equipment	38	0.91	721	0.51	272	0.54
Improper Passing	137	3.27	1,186	0.84	347	0.69
Drove Left of Center	280	6.69	1,046	0.74	235	0.47
Obstructing Traffic	13	0.31	373	0.26	118	0.23
Improper Load	4	0.10	134	0.09	90	0.18
Disregard Other Traffic Control	18	0.43	486	0.34	160	0.32
Driving Wrong Side/Way	56	1.34	806	0.57	226	0.45
Fleeing Police	18	0.43	314	0.22	187	0.37
Vehicle Modified	5	0.12	16	0.01	8	0.02
Driver Distraction	26	0.62	1,364	0.97	461	0.91
All Other	540	12.90	21,623	15.31	8,620	17.09
Total	4,185	100	141,275	100	50,447	100

* This table lists contributing causes of drivers in traffic crashes. There can be up to three contributing causes per driver.

Environmental Causes

2006 Florida Traffic Crash Statistics

TABLE 21 **Lighting Conditions at the Time of Crash**

Lighting Conditions	All Crashes	Fatal Crashes	Injury Crashes	Vehicle and/or Property Damage Only Crashes
Daylight	163,048	1,342	93,824	67,882
Dusk	6,749	75	3,651	3,023
Dawn	3,583	59	1,963	1,561
Darkness	78,418	1,585	37,033	39,800
Unknown	4,402	23	811	3,568
Total	256,200	3,084	137,282	115,834

TABLE 22 **Road Surface Conditions at the Time of Crash**

Surface Conditions	All Crashes	Fatal Crashes	Injury Crashes	Vehicle and/or Property Damage Only Crashes
Dry	223,247	2,772	119,879	100,596
Wet	28,370	287	15,693	12,390
Slippery	1,278	7	750	521
Icy	46	0	28	18
Other	3,259	18	932	2,309
Total	256,200	3,084	137,282	115,834

Vehicle Harmful Events*

2006 Florida Traffic Crash Statistics

TABLE 23

Vehicle Harmful Events	Type of Crash					
	Fatal	%	Injury	%	Vehicle and/or Property Damage Only	%
Collision With MV in Transport (Rear-end)	460	6.56	70,667	25.21	26,213	21.38
Collision With MV in Transport (Head-on)	422	6.02	8,366	2.99	2,459	2.01
Collision With MV in Transport (Angle)	1,167	16.65	47,713	17.02	16,789	13.69
Collision With MV in Transport (Left Turn)	295	4.21	17,782	6.34	5,240	4.27
Collision With MV in Transport (Right Turn)	10	0.14	2,007	0.72	1,288	1.05
Collision With MV in Transport (Sideswipe)	193	2.75	10,152	3.62	9,225	7.52
Collision With MV in Transport (Backed Into)	2	0.03	1,564	0.56	2,082	1.70
Collision With Parked Car	48	0.68	2,345	0.84	2,109	1.72
Collision With MV on Other Roadway	91	1.30	9,331	3.33	4,129	3.37
Collision With Pedestrian	435	6.21	4,506	1.61	65	0.05
Collision With Bicycle	126	1.80	3,736	1.33	198	0.16
Collision With Moped	4	0.06	151	0.05	16	0.01
Collision With Train	2	0.03	41	0.01	42	0.03
Collision With Animal	12	0.17	306	0.11	180	0.15
Collision With Fixed Object	1,237	17.65	25,326	9.04	12,086	9.86
Collision With Moveable Object On Road	33	0.47	950	0.34	1,258	1.03
Collision With Fixed Object Above Road	53	0.76	1,244	0.44	783	0.64
Ran Into Ditch/Culvert	217	3.10	4,517	1.61	1,780	1.45
Ran Off Road Into Water	65	0.93	710	0.25	396	0.32
Overtuned	826	11.78	10,255	3.66	1,839	1.50
Occupant Fell from Vehicle	278	3.97	2,336	0.83	61	0.05
Tractor/Trailer Jackknifed	14	0.20	134	0.05	160	0.13
Fire	116	1.65	223	0.08	251	0.20
Explosion**	1	0.01	4	0.00	3	0.00
Downhill Runaway**	0	0.00	20	0.01	5	0.00
Cargo Loss or Shift	3	0.04	217	0.08	201	0.16
Separation of Units	5	0.07	88	0.03	78	0.06
Median Crossover	63	0.90	694	0.25	319	0.26
All Other	832	11.87	54,879	19.58	33,370	27.21
Total	7,010	100	280,264	100	122,625	100

* This table lists harmful events reported by the investigating officer for vehicles in traffic crashes. There can be up to four harmful events per vehicle.

** Occasionally, the number of crashes is so small that the percentage is less than one-hundredth of one percent and with only two decimal places, the percentage is reflected as 0.00.

Vehicle and Truck Information

2006 Florida Traffic Crash Statistics

TABLE 24 Vehicle Types Involved in Crashes

Vehicle Type	Number of Vehicles			
	All Crashes	Fatal Crashes	Injury Crashes	Vehicle and/or Property Damage Only Crashes
Automobile	235,067	2,369	157,915	74,783
Passenger Van	26,692	301	18,572	7,819
Light Truck (2 rear tires)	69,729	956	47,160	21,613
Medium Truck (4 rear tires)	5,150	80	3,224	1,846
Heavy Truck	5,189	118	3,034	2,037
Truck-Tractor (Cab)	4,978	170	2,658	2,150
Motor Home (RV)	225	7	117	101
Bus (driver + seats for 9-15)	434	2	253	179
Bus (driver + seats for over 15)	2,080	30	1,104	946
Bicycle	4,665	130	4,271	264
Motorcycle	9,259	578	8,182	499
Moped	721	9	665	47
All Terrain Vehicle	771	23	684	64
Train	39	0	17	22
Low Speed Vehicle	184	8	151	25
Other	4,702	46	3,071	1,585
Unknown Vehicle Type	150	3	147	0
Total	370,035	4,830	251,225	113,980

Vehicle and Truck Information

2006 Florida Traffic Crash Statistics

TABLE 25 Contributing Causes of Drivers in Truck Crashes*

Contributing Cause	Type of Truck**			
	Light Truck	Medium Truck	Heavy Truck	Truck Tractor (Cab)
Careless Driving	15,072	986	1,013	967
Failed/Yield Right-of-Way	5,920	344	257	195
Improper Backing	607	114	147	78
Improper Lane Change	964	132	189	254
Improper Turn	1,078	103	117	129
Alcohol-Under Influence	2,035	62	10	4
Drugs-Under Influence	187	5	1	7
Alcohol & Drugs-Under Influence	326	6	1	1
Followed Too Closely	1,569	114	105	71
Disregarded Traffic Signal	1,360	90	72	45
Exceeded Safe Speed Limit	1,051	41	58	72
Exceeded Stated Speed Limit	604	26	23	15
Disregarded Stop Sign	401	55	79	52
Failed to Maintain Equipment	204	8	15	12
Improper Passing	394	12	17	18
Drove Left of Center	286	9	10	4
Obstructing Traffic	94	10	14	16
Improper Load	105	28	24	29
Disregard Other Traffic Control	123	9	4	6
Driving Wrong Side/Way	143	10	6	2
Fleeing Police	93	1	0	0
Vehicle Modified	7	1	0	0
Driver Distraction	405	27	13	11
All Other	5,203	455	493	451
Total	38,231	2,648	2,668	2,439

* This table lists contributing causes of drivers in traffic crashes. There can be up to three contributing causes per driver.

** Type of Truck	Description
Light Truck/Pickup	2 rear tires
Medium Truck	4 rear tires
Heavy Truck	2 or more rear axles
Truck Tractor	Cab - Bobtail

County Data

2006 Florida Traffic Crash Statistics

TABLE 26 5 YEAR CRASH HISTORY BY COUNTY

COUNTY	2002	2003	2004	2005	2006	COUNTY	2002	2003	2004	2005	2006
ALACHUA	4,140	3,937	3,928	4,301	4,221	LEVY	407	416	444	517	456
BAKER	234	220	270	286	272	LIBERTY	70	65	64	69	62
BAY	2,296	2,223	2,503	2,559	2,596	MADISON	244	234	239	318	277
BRADFORD	306	341	267	341	360	MANATEE	3,537	3,700	3,777	3,987	3,993
BREVARD	4,515	4,562	4,532	4,754	4,544	MARION	3,320	3,476	3,512	4,483	4,193
BROWARD	27,096	26,444	26,627	27,399	26,441	MARTIN	1,725	1,659	1,789	1,801	1,570
CALHOUN	105	98	99	105	76	MIAMI-DADE	49,922	45,731	46,166	48,537	42,582
CHARLOTTE	1,702	1,818	2,053	2,182	2,064	MONROE	1,649	1,610	1,548	1,473	1,337
CITRUS	860	809	1,091	968	981	NASSAU	581	460	496	599	571
CLAY	1,863	1,762	1,880	1,486	1,454	OKALOOSA	2,048	2,074	2,174	2,190	2,050
COLLIER	2,901	2,737	2,738	2,912	2,705	OKEECHOBEE	373	406	363	394	425
COLUMBIA	828	801	861	667	808	ORANGE	14,918	14,654	15,893	17,843	17,506
DE SOTO	295	303	391	367	382	OSCEOLA	2,081	1,973	2,950	3,020	3,002
DIXIE	143	182	136	153	132	PALM BEACH	14,906	15,409	15,778	16,526	14,948
DUVAL	15,099	13,435	14,116	15,761	15,440	PASCO	3,956	3,999	5,634	6,048	6,202
ESCAMBIA	3,944	4,296	4,377	5,290	4,722	PINELLAS	14,019	13,550	13,823	14,194	13,939
FLAGLER	460	508	609	805	822	POLK	6,606	6,635	7,522	7,948	7,623
FRANKLIN	126	107	95	93	77	PUTNAM	918	855	944	1,024	1,014
GADSDEN	647	704	711	650	575	ST. JOHNS	1,562	1,870	1,660	1,850	1,908
GILCHRIST	146	183	167	140	131	ST. LUCIE	2,093	2,074	2,409	2,914	2,535
GLADES	112	115	120	118	167	SANTA ROSA	1,184	1,259	1,402	1,543	1,541
GULF	119	97	96	90	92	SARASOTA	3,724	3,631	3,507	3,809	3,593
HAMILTON	156	148	159	114	208	SEMINOLE	2,980	2,972	2,945	3,228	2,906
HARDEE	297	268	285	376	352	SUMTER	528	547	687	659	766
HENDRY	332	355	351	399	390	SUWANNEE	416	389	417	347	463
HERNANDO	1,361	1,292	1,460	1,592	1,758	TAYLOR	246	242	244	235	246
HIGHLANDS	732	770	826	854	859	UNION	90	90	92	85	103
HILLSBOROUGH	21,609	21,242	21,722	23,329	23,971	VOLUSIA	6,570	6,244	6,332	6,524	6,552
HOLMES	126	147	128	149	152	WAKULLA	251	255	186	199	212
INDIAN RIVER	1,435	1,375	1,445	1,522	1,532	WALTON	516	567	628	684	654
JACKSON	521	523	513	605	546	WASHINGTON	188	174	218	238	263
JEFFERSON	162	131	153	166	163	UNKNOWN	0	2	9	27	22
LAFAYETTE	59	59	57	59	81	STATEWIDE	250,470	243,294	252,902	268,605	256,200
LAKE	2,390	2,409	2,497	2,642	2,700						
LEE	5,634	5,963	5,834	6,237	5,625						
LEON	6,091	5,708	5,953	5,821	5,287						

County Data

2006 Florida Traffic Crash Statistics

TABLE 27 5 YEAR ALCOHOL-RELATED CRASH HISTORY BY COUNTY

COUNTY	2002	2003	2004	2005	2006	COUNTY	2002	2003	2004	2005	2006
ALACHUA	355	339	349	359	304	LEVY	47	66	59	65	59
BAKER	33	34	40	31	45	LIBERTY	12	20	10	12	5
BAY	371	380	447	438	405	MADISON	26	32	23	37	30
BRADFORD	27	52	27	30	40	MANATEE	421	442	488	529	554
BREVARD	673	686	627	684	676	MARION	278	315	309	289	294
BROWARD	1,619	1,821	1,773	1,759	1,684	MARTIN	247	241	233	275	232
CALHOUN	20	15	22	18	14	MIAMI-DADE	1,876	2,027	1,915	2,117	1,792
CHARLOTTE	181	191	211	209	211	MONROE	244	267	282	258	223
CITRUS	141	125	152	147	157	NASSAU	80	90	77	104	84
CLAY	201	203	210	197	188	OKALOOSA	324	352	340	379	333
COLLIER	426	413	431	411	372	OKEECHOBEE	62	70	61	64	70
COLUMBIA	122	113	133	98	122	ORANGE	1,052	1,193	1,287	1,353	1,322
DE SOTO	37	31	56	46	52	OSCEOLA	194	182	246	254	243
DIXIE	23	34	28	32	31	PALM BEACH	1,283	1,415	1,339	1,419	1,265
DUVAL	1,177	1,159	1,245	1,300	1,287	PASCO	483	516	581	588	593
ESCAMBIA	515	602	536	674	683	PINELLAS	1,560	1,631	1,610	1,631	1,533
FLAGLER	49	68	78	108	109	POLK	577	597	649	711	687
FRANKLIN	38	29	33	26	17	PUTNAM	109	128	141	120	124
GADSDEN	92	89	104	85	87	ST. JOHNS	199	248	227	285	271
GILCHRIST	23	37	25	21	20	ST. LUCIE	239	238	263	322	283
GLADES	17	16	20	22	17	SANTA ROSA	143	135	159	165	219
GULF	24	20	21	21	22	SARASOTA	478	493	452	506	457
HAMILTON	27	18	28	12	25	SEMINOLE	321	412	437	439	430
HARDEE	26	33	31	37	44	SUMTER	56	44	69	59	74
HENDRY	52	45	56	52	59	SUWANNEE	55	59	64	67	80
HERNANDO	183	174	202	204	199	TAYLOR	43	36	43	34	42
HIGHLANDS	86	79	82	98	91	UNION	12	16	12	14	13
HILLSBOROUGH	1,939	1,986	1,976	1,939	1,937	VOLUSIA	736	738	739	745	771
HOLMES	24	18	30	20	23	WAKULLA	58	66	51	36	45
INDIAN RIVER	144	144	144	174	189	WALTON	85	88	98	107	88
JACKSON	82	79	84	65	62	WASHINGTON	31	28	35	35	45
JEFFERSON	28	12	16	24	29	UNKNOWN	0	0	2	4	2
LAFAYETTE	11	13	6	15	15	STATEWIDE	21,533	22,752	23,013	23,864	22,858
LAKE	281	271	288	293	303						
LEE	686	800	765	756	654						
LEON	469	438	436	436	422						

County Data

2006 Florida Traffic Crash Statistics

TABLE 28

5 YEAR FATALITY HISTORY BY COUNTY

COUNTY	2002	2003	2004	2005	2006	COUNTY	2002	2003	2004	2005	2006
ALACHUA	35	29	50	36	43	LEVY	13	15	14	29	13
BAKER	13	12	5	11	17	LIBERTY	2	7	1	1	4
BAY	26	38	37	33	46	MADISON	10	8	10	15	11
BRADFORD	7	14	2	8	8	MANATEE	43	77	61	70	56
BREVARD	113	87	80	94	98	MARION	82	115	87	105	67
BROWARD	184	185	202	263	256	MARTIN	32	33	50	26	32
CALHOUN	1	5	6	6	4	MIAMI-DADE	353	325	318	336	347
CHARLOTTE	24	19	37	45	32	MONROE	19	26	30	23	23
CITRUS	33	32	38	26	32	NASSAU	11	14	11	13	20
CLAY	20	17	30	32	27	OKALOOSA	36	27	8	39	25
COLLIER	64	79	57	55	56	OKEECHOBEE	12	21	14	20	19
COLUMBIA	29	32	32	29	29	ORANGE	164	169	186	194	184
DE SOTO	13	11	14	18	18	OSCEOLA	74	56	74	68	65
DIXIE	4	8	4	11	11	PALM BEACH	198	208	178	195	212
DUVAL	118	122	131	156	144	PASCO	97	83	78	83	96
ESCAMBIA	45	42	50	70	37	PINELLAS	119	103	118	107	120
FLAGLER	16	17	20	20	30	POLK	127	116	142	143	159
FRANKLIN	5	5	3	2	3	PUTNAM	27	24	25	22	24
GADSDEN	13	19	25	28	22	ST. JOHNS	36	31	39	42	20
GILCHRIST	6	8	6	4	3	ST. LUCIE	48	42	46	53	51
GLADES	8	6	10	4	8	SANTA ROSA	21	38	21	19	25
GULF	2	6	4	2	1	SARASOTA	48	71	53	58	55
HAMILTON	13	10	15	3	4	SEMINOLE	33	24	62	39	39
HARDEE	9	9	10	9	6	SUMTER	27	13	22	22	25
HENDRY	16	13	26	30	23	SUWANNEE	23	14	19	26	22
HERNANDO	25	34	45	31	33	TAYLOR	7	8	5	6	4
HIGHLANDS	35	21	20	33	21	UNION	4	4	4	3	10
HILLSBOROUGH	223	198	189	207	191	VOLUSIA	112	91	131	134	122
HOLMES	10	7	5	3	9	WAKULLA	4	9	2	4	4
INDIAN RIVER	28	42	41	32	27	WALTON	17	20	22	31	23
JACKSON	17	24	21	16	19	WASHINGTON	7	3	9	13	11
JEFFERSON	11	4	9	8	12	UNKNOWN	0	0	0	0	0
LAFAYETTE	2	0	1	2	1	STATEWIDE	3,143	3,179	3,257	3,533	3,365
LAKE	71	72	67	75	57						
LEE	71	121	108	150	121						
LEON	27	36	17	42	28						

County Data

2006 Florida Traffic Crash Statistics

TABLE 29 5 YEAR ALCOHOL-RELATED FATALITY HISTORY BY COUNTY

COUNTY	2002	2003	2004	2005	2006	COUNTY	2002	2003	2004	2005	2006
ALACHUA	9	12	12	14	17	LEVY	9	4	4	11	6
BAKER	4	9	1	2	4	LIBERTY	1	6	0	0	0
BAY	8	15	23	19	24	MADISON	3	1	1	7	2
BRADFORD	4	8	1	6	3	MANATEE	12	24	19	27	19
BREVARD	35	36	30	33	43	MARION	33	49	29	38	25
BROWARD	29	59	53	78	59	MARTIN	10	6	14	11	12
CALHOUN	0	2	2	1	1	MIAMI-DADE	84	78	78	74	75
CHARLOTTE	4	6	15	20	11	MONROE	10	6	16	12	12
CITRUS	7	7	13	10	11	NASSAU	4	12	4	6	7
CLAY	5	7	17	14	11	OKALOOSA	14	12	2	12	14
COLLIER	16	21	13	17	16	OKEECHOBEE	6	11	5	6	8
COLUMBIA	8	10	8	10	8	ORANGE	64	66	74	75	64
DE SOTO	4	7	8	11	0	OSCEOLA	28	23	17	25	20
DIXIE	3	4	2	4	9	PALM BEACH	58	54	62	67	62
DUVAL	38	35	49	67	55	PASCO	33	33	33	30	38
ESCAMBIA	17	20	22	22	15	PINELLAS	51	37	48	39	48
FLAGLER	8	8	5	3	12	POLK	38	36	40	49	41
FRANKLIN	1	2	3	1	1	PUTNAM	11	11	8	11	9
GADSDEN	5	7	6	17	11	ST. JOHNS	17	9	11	16	5
GILCHRIST	3	1	1	3	0	ST. LUCIE	14	13	4	12	17
GLADES	6	3	3	2	4	SANTA ROSA	11	10	7	8	11
GULF	1	5	0	2	0	SARASOTA	16	34	20	15	17
HAMILTON	2	5	8	2	2	SEMINOLE	3	12	24	15	13
HARDEE	1	3	5	5	2	SUMTER	6	2	8	3	6
HENDRY	9	5	8	7	11	SUWANNEE	5	8	5	11	10
HERNANDO	3	7	9	9	9	TAYLOR	2	3	2	2	3
HIGHLANDS	10	7	4	16	9	UNION	1	1	1	1	2
HILLSBOROUGH	79	73	75	59	60	VOLUSIA	48	42	60	55	50
HOLMES	5	2	3	0	1	WAKULLA	1	5	2	2	2
INDIAN RIVER	6	9	10	13	5	WALTON	10	8	8	10	11
JACKSON	7	7	8	5	4	WASHINGTON	4	2	2	5	3
JEFFERSON	3	2	4	5	5	UNKNOWN	0	0	0	0	0
LAFAYETTE	0	0	0	1	0	STATEWIDE	1,007	1,096	1,093	1,239	1,099
LAKE	27	20	24	31	15						
LEE	24	42	32	54	40						
LEON	9	12	8	21	9						

County Data

2006 Florida Traffic Crash Statistics

TABLE 30

5 YEAR INJURY HISTORY BY COUNTY

COUNTY	2002	2003	2004	2005	2006	COUNTY	2002	2003	2004	2005	2006
ALACHUA	3,164	2,955	2,814	2,991	3,128	LEVY	437	455	523	571	439
BAKER	266	251	260	328	318	LIBERTY	91	68	79	68	93
BAY	2,132	2,121	2,214	2,179	2,117	MADISON	275	241	311	348	278
BRADFORD	319	327	250	306	330	MANATEE	3,090	3,123	3,251	3,349	3,095
BREVARD	4,787	4,932	4,760	4,544	4,284	MARION	3,738	3,839	3,574	4,898	4,205
BROWARD	24,887	24,023	23,600	22,880	20,376	MARTIN	1,535	1,496	1,486	1,434	1,245
CALHOUN	125	128	129	122	89	MIAMI-DADE	41,699	37,676	37,955	37,879	31,030
CHARLOTTE	1,474	1,489	1,643	1,867	1,724	MONROE	1,386	1,348	1,203	1,165	1,152
CITRUS	911	956	1,232	1,040	1,026	NASSAU	585	439	519	577	601
CLAY	1,494	1,269	1,291	1,369	1,297	OKALOOSA	1,923	1,891	1,853	1,899	1,650
COLLIER	2,575	2,333	2,482	2,388	2,276	OKEECHOBEE	421	467	373	400	446
COLUMBIA	1,034	930	1,006	709	867	ORANGE	15,344	14,986	15,009	15,894	15,148
DE SOTO	319	307	401	414	461	OSCEOLA	2,416	2,053	3,132	3,013	2,978
DIXIE	136	140	151	122	125	PALM BEACH	14,677	14,876	15,694	15,894	13,278
DUVAL	11,457	9,778	10,455	11,274	10,946	PASCO	4,323	4,435	6,862	8,033	7,397
ESCAMBIA	4,440	4,744	4,834	5,358	4,329	PINELLAS	12,147	11,310	11,593	12,089	11,681
FLAGLER	634	638	721	865	890	POLK	7,027	6,888	7,355	7,197	7,018
FRANKLIN	132	99	93	83	69	PUTNAM	744	825	891	882	877
GADSDEN	700	668	766	732	608	ST. JOHNS	1,569	1,981	1,576	1,821	1,781
GILCHRIST	154	164	174	117	164	ST. LUCIE	2,143	2,164	2,178	2,360	2,015
GLADES	114	84	126	134	145	SANTA ROSA	1,552	1,690	1,710	1,841	1,827
GULF	129	105	88	81	83	SARASOTA	3,455	3,357	3,088	3,273	2,977
HAMILTON	151	144	145	108	221	SEMINOLE	2,757	2,707	2,527	2,656	2,383
HARDEE	339	239	327	381	347	SUMTER	643	682	789	677	863
HENDRY	361	342	364	397	388	SUWANNEE	455	374	438	398	474
HERNANDO	1,692	1,672	1,956	1,982	2,149	TAYLOR	225	244	302	255	202
HIGHLANDS	736	763	814	724	746	UNION	91	112	91	86	125
HILLSBOROUGH	19,214	19,063	18,408	19,617	20,174	VOLUSIA	5,671	5,629	5,406	5,594	5,579
HOLMES	164	190	183	183	197	WAKULLA	274	292	196	208	188
INDIAN RIVER	1,321	1,273	1,316	1,411	1,511	WALTON	584	673	672	663	589
JACKSON	543	666	591	717	567	WASHINGTON	235	174	241	272	283
JEFFERSON	205	137	191	168	181	UNKNOWN	0	8	19	30	21
LAFAYETTE	62	40	77	54	65	STATEWIDE	229,611	221,639	227,192	233,930	214,914
LAKE	2,346	2,442	2,561	2,700	2,523						
LEE	5,096	5,571	5,240	5,686	4,698						
LEON	4,486	4,153	4,633	4,175	3,577						

County Data

2006 Florida Traffic Crash Statistics

TABLE 31 5 YEAR ALCOHOL-RELATED INJURY HISTORY BY COUNTY

COUNTY	2002	2003	2004	2005	2006	COUNTY	2002	2003	2004	2005	2006
ALACHUA	237	228	235	192	171	LEVY	51	55	61	64	58
BAKER	26	32	34	28	47	LIBERTY	16	14	9	10	5
BAY	260	243	314	311	259	MADISON	11	29	35	34	27
BRADFORD	28	47	23	23	40	MANATEE	320	295	378	355	356
BREVARD	525	502	457	426	481	MARION	281	300	286	282	241
BROWARD	1,350	1,475	1,377	1,424	1,282	MARTIN	131	159	146	165	126
CALHOUN	23	17	30	13	18	MIAMI-DADE	1,530	1,606	1,597	1,635	1,286
CHARLOTTE	127	150	181	191	175	MONROE	151	185	172	149	143
CITRUS	126	92	105	114	112	NASSAU	67	60	64	89	63
CLAY	128	124	134	112	120	OKALOOSA	251	203	191	212	212
COLLIER	285	325	289	244	235	OKEECHOBEE	58	64	41	42	60
COLUMBIA	117	95	102	94	106	ORANGE	872	1,007	990	1,038	952
DE SOTO	25	29	40	46	45	OSCEOLA	163	161	230	193	189
DIXIE	18	24	19	28	30	PALM BEACH	1,025	1,076	1,131	1,170	945
DUVAL	778	776	847	805	787	PASCO	383	449	545	614	539
ESCAMBIA	439	482	477	537	495	PINELLAS	1,218	1,180	1,193	1,162	987
FLAGLER	48	67	81	101	78	POLK	515	475	467	600	477
FRANKLIN	26	25	27	24	10	PUTNAM	76	126	126	87	134
GADSDEN	102	76	111	94	91	ST. JOHNS	140	201	167	226	232
GILCHRIST	23	30	21	19	22	ST. LUCIE	163	179	163	206	153
GLADES	20	15	15	24	10	SANTA ROSA	156	121	169	151	196
GULF	23	21	8	23	19	SARASOTA	338	320	322	349	310
HAMILTON	18	18	14	10	16	SEMINOLE	198	266	255	246	283
HARDEE	30	35	14	46	41	SUMTER	54	31	52	51	81
HENDRY	59	28	46	32	52	SUWANNEE	47	47	46	56	61
HERNANDO	143	142	165	162	156	TAYLOR	33	27	43	44	37
HIGHLANDS	74	55	59	64	70	UNION	12	26	8	14	12
HILLSBOROUGH	1,512	1,442	1,432	1,332	1,273	VOLUSIA	548	544	510	545	605
HOLMES	10	17	30	19	23	WAKULLA	42	58	28	31	21
INDIAN RIVER	122	96	106	128	151	WALTON	81	80	83	85	56
JACKSON	65	75	78	51	52	WASHINGTON	29	25	33	32	43
JEFFERSON	25	13	12	27	29	UNKNOWN	0	0	2	3	3
LAFAYETTE	11	9	12	11	6	STATEWIDE	16,864	17,379	17,580	17,783	16,319
LAKE	219	210	237	223	202						
LEE	524	676	540	557	468						
LEON	358	319	365	308	254						

5 YEAR VEHICLE AND/OR PROPERTY DAMAGE ONLY CRASH
HISTORY BY COUNTY

TABLE 32

COUNTY	2002	2003	2004	2005	2006	COUNTY	2002	2003	2004	2005	2006
ALACHUA	1,944	1,926	1,960	2,168	2,004	LEVY	134	151	155	196	180
BAKER	75	63	98	94	98	LIBERTY	15	15	15	21	14
BAY	933	903	1,068	1,147	1,251	MADISON	83	75	62	99	96
BRADFORD	122	130	105	154	148	MANATEE	1,553	1,554	1,629	1,850	1,921
BREVARD	1,466	1,393	1,484	1,730	1,706	MARION	1,132	1,183	1,335	1,673	1,647
BROWARD	11,077	10,889	11,330	12,284	12,768	MARTIN	720	695	782	835	737
CALHOUN	27	18	16	28	21	MIAMI-DADE	24,717	22,670	22,930	24,735	22,702
CHARLOTTE	736	867	958	981	969	MONROE	658	638	611	576	551
CITRUS	275	247	360	279	308	NASSAU	215	176	174	219	197
CLAY	868	904	989	541	594	OKALOOSA	798	856	915	912	910
COLLIER	1,267	1,203	1,219	1,316	1,190	OKEECHOBEE	118	120	128	143	157
COLUMBIA	204	228	268	216	273	ORANGE	5,166	5,087	6,264	7,320	7,475
DE SOTO	94	113	128	127	119	OSCEOLA	651	685	1,068	1,126	1,141
DIXIE	55	81	47	56	45	PALM BEACH	5,488	5,722	5,845	6,472	6,256
DUVAL	7,405	6,759	7,040	8,088	7,945	PASCO	1,345	1,390	1,881	1,853	2,120
ESCAMBIA	1,182	1,438	1,393	1,933	1,934	PINELLAS	6,026	5,898	6,058	6,135	6,160
FLAGLER	102	124	143	225	222	POLK	2,347	2,356	2,938	3,251	3,096
FRANKLIN	37	33	30	39	25	PUTNAM	420	302	337	428	441
GADSDEN	214	280	234	205	196	ST. JOHNS	572	637	624	710	745
GILCHRIST	48	69	62	63	37	ST. LUCIE	796	773	991	1,301	1,089
GLADES	40	51	37	39	64	SANTA ROSA	304	286	387	470	489
GULF	28	23	34	31	35	SARASOTA	1,433	1,432	1,408	1,593	1,586
HAMILTON	47	51	62	49	82	SEMINOLE	1,134	1,148	1,180	1,365	1,274
HARDEE	95	108	96	142	131	SUMTER	154	159	212	223	266
HENDRY	122	126	118	146	137	SUWANNEE	119	129	148	114	160
HERNANDO	310	281	315	411	442	TAYLOR	96	87	73	90	106
HIGHLANDS	271	298	292	359	356	UNION	21	19	26	24	29
HILLSBOROUGH	9,153	8,989	9,583	10,403	10,708	VOLUSIA	2,677	2,374	2,581	2,727	2,764
HOLMES	40	27	26	33	28	WAKULLA	84	72	65	73	97
INDIAN RIVER	636	561	596	655	628	WALTON	173	177	241	255	267
JACKSON	165	143	144	175	163	WASHINGTON	46	51	63	72	70
JEFFERSON	34	36	40	60	56	UNKNOWN	0	0	1	10	10
LAFAYETTE	16	31	16	19	40	STATEWIDE	104,662	101,523	107,578	117,541	115,834
LAKE	896	862	940	995	1,126						
LEE	2,272	2,356	2,299	2,485	2,375						
LEON	3,211	2,995	2,921	2,994	2,857						

TABLE 33 5 YEAR MOTORCYCLIST FATALITY HISTORY BY COUNTY

COUNTY	2002	2003	2004	2005	2006	COUNTY	2002	2003	2004	2005	2006
ALACHUA	1	2	2	1	3	LEVY	0	0	2	3	4
BAKER	0	0	0	1	2	LIBERTY	1	0	0	0	0
BAY	2	4	4	2	11	MADISON	0	0	0	0	1
BRADFORD	0	1	1	0	2	MANATEE	4	8	7	10	8
BREVARD	7	10	12	13	25	MARION	5	14	9	14	8
BROWARD	29	23	30	41	44	MARTIN	3	2	6	2	7
CALHOUN	0	0	1	0	1	MIAMI-DADE	27	43	42	45	61
CHARLOTTE	3	4	4	13	5	MONROE	1	2	6	2	3
CITRUS	3	5	5	2	3	NASSAU	1	2	0	0	0
CLAY	2	5	5	5	4	OKALOOSA	3	2	1	4	3
COLLIER	4	6	2	2	6	OKEECHOBEE	1	3	2	1	0
COLUMBIA	0	0	4	0	3	ORANGE	13	16	27	21	32
DE SOTO	0	1	0	0	1	OSCEOLA	2	5	5	5	11
DIXIE	0	0	2	0	1	PALM BEACH	23	16	21	24	28
DUVAL	12	16	15	23	22	PASCO	9	9	6	12	13
ESCAMBIA	5	6	8	9	4	PINELLAS	12	22	17	17	24
FLAGLER	4	2	3	3	11	POLK	6	8	17	14	21
FRANKLIN	0	2	0	0	0	PUTNAM	3	1	1	2	0
GADSDEN	0	1	3	0	0	ST. JOHNS	5	5	5	7	1
GILCHRIST	0	0	0	1	0	ST. LUCIE	7	1	3	6	3
GLADES	1	0	0	0	0	SANTA ROSA	2	2	1	4	2
GULF	0	0	0	1	0	SARASOTA	3	13	9	6	5
HAMILTON	0	1	0	0	0	SEMINOLE	3	3	8	6	8
HARDEE	1	0	0	0	0	SUMTER	0	0	1	1	3
HENDRY	0	0	1	1	2	SUWANNEE	1	1	1	0	2
HERNANDO	2	4	6	4	4	TAYLOR	0	0	0	0	0
HIGHLANDS	2	1	4	3	5	UNION	0	0	1	1	0
HILLSBOROUGH	22	24	18	42	37	VOLUSIA	21	16	32	33	34
HOLMES	0	0	1	1	1	WAKULLA	0	1	0	1	1
INDIAN RIVER	2	0	2	3	1	WALTON	0	0	2	2	2
JACKSON	0	1	0	1	0	WASHINGTON	0	0	1	1	1
JEFFERSON	0	0	0	0	1						
LAFAYETTE	0	0	0	0	0	UNKNOWN	0	0	0	0	0
LAKE	5	4	7	9	11						
LEE	9	17	14	13	18	STATEWIDE	274	339	388	441	521
LEON	2	4	1	3	7						

County Data

2006 Florida Traffic Crash Statistics

TABLE 34 5 YEAR MOTORCYCLIST INJURY HISTORY BY COUNTY

COUNTY	2002	2003	2004	2005	2006	COUNTY	2002	2003	2004	2005	2006
ALACHUA	73	76	78	63	101	LEVY	9	14	9	8	17
BAKER	1	2	5	8	2	LIBERTY	1	3	4	1	1
BAY	84	69	101	100	137	MADISON	1	2	2	7	3
BRADFORD	9	7	8	7	12	MANATEE	76	94	128	99	131
BREVARD	155	220	230	228	262	MARION	82	99	88	133	188
BROWARD	453	513	578	593	616	MARTIN	42	53	59	44	77
CALHOUN	4	3	5	3	2	MIAMI-DADE	622	715	753	818	712
CHARLOTTE	40	44	54	82	84	MONROE	227	209	223	221	202
CITRUS	35	36	44	52	67	NASSAU	17	11	16	15	37
CLAY	46	53	70	67	52	OKALOOSA	49	52	66	64	59
COLLIER	65	60	53	94	79	OKEECHOBEE	9	18	6	10	17
COLUMBIA	24	18	19	18	26	ORANGE	312	357	422	472	507
DE SOTO	7	7	12	7	15	OSCEOLA	61	48	84	84	113
DIXIE	3	6	3	3	3	PALM BEACH	298	341	353	388	330
DUVAL	319	351	327	328	395	PASCO	99	139	174	226	253
ESCAMBIA	78	100	102	141	155	PINELLAS	317	337	346	420	465
FLAGLER	34	26	32	48	72	POLK	161	153	176	214	263
FRANKLIN	4	6	5	3	0	PUTNAM	15	23	23	37	39
GADSDEN	11	10	17	11	15	ST. JOHNS	76	86	60	84	78
GILCHRIST	6	3	3	6	5	ST. LUCIE	23	51	66	86	106
GLADES	2	4	4	3	4	SANTA ROSA	22	32	47	42	67
GULF	1	2	1	2	1	SARASOTA	94	87	88	128	125
HAMILTON	4	0	3	3	10	SEMINOLE	97	93	121	131	148
HARDEE	5	3	6	13	10	SUMTER	10	13	17	19	33
HENDRY	6	7	10	12	11	SUWANNEE	6	7	5	6	10
HERNANDO	45	47	60	71	100	TAYLOR	6	2	5	4	5
HIGHLANDS	19	16	20	27	43	UNION	0	1	3	1	2
HILLSBOROUGH	346	435	439	503	616	VOLUSIA	437	435	461	519	538
HOLMES	2	4	7	5	5	WAKULLA	5	10	5	14	9
INDIAN RIVER	25	33	31	36	48	WALTON	14	15	14	28	27
JACKSON	4	7	6	20	16	WASHINGTON	6	7	7	4	7
JEFFERSON	3	1	6	1	2	UNKNOWN	0	0	0	0	2
LAFAYETTE	2	1	1	1	0						
LAKE	62	68	108	113	129						
LEE	139	145	178	193	180	STATEWIDE	5,384	5,973	6,558	7,282	7,934
LEON	74	83	101	90	88						

County Data

2006 Florida Traffic Crash Statistics

TABLE 35 5 YEAR BICYCLIST FATALITY HISTORY BY COUNTY

COUNTY	2002	2003	2004	2005	2006	COUNTY	2002	2003	2004	2005	2006
ALACHUA	2	2	3	0	2	LEVY	0	0	0	0	0
BAKER	0	0	0	0	0	LIBERTY	0	0	0	0	0
BAY	1	2	0	1	3	MADISON	0	0	0	0	0
BRADFORD	0	0	0	0	0	MANATEE	2	1	1	4	6
BREVARD	3	1	2	3	5	MARION	2	2	3	0	2
BROWARD	4	5	6	8	12	MARTIN	0	2	2	2	2
CALHOUN	0	0	0	0	0	MIAMI-DADE	17	11	6	8	8
CHARLOTTE	2	1	1	0	0	MONROE	1	1	5	1	2
CITRUS	3	0	0	1	0	NASSAU	0	0	1	0	0
CLAY	1	0	0	0	0	OKALOOSA	1	1	0	0	3
COLLIER	5	2	1	5	3	OKEECHOBEE	0	2	1	0	1
COLUMBIA	1	2	1	1	1	ORANGE	6	5	8	10	10
DE SOTO	0	2	0	1	1	OSCEOLA	3	1	1	3	2
DIXIE	0	0	0	0	0	PALM BEACH	8	9	8	8	9
DUVAL	2	1	6	3	7	PASCO	4	3	6	1	2
ESCAMBIA	1	2	2	3	1	PINELLAS	6	5	13	7	5
FLAGLER	1	1	1	1	1	POLK	1	2	3	6	3
FRANKLIN	0	0	0	0	0	PUTNAM	0	0	1	0	0
GADSDEN	0	0	0	0	0	ST. JOHNS	1	2	3	3	0
GILCHRIST	0	0	0	0	0	ST. LUCIE	1	1	2	2	2
GLADES	0	0	0	0	0	SANTA ROSA	1	2	1	0	0
GULF	0	0	0	0	0	SARASOTA	1	5	5	3	5
HAMILTON	0	0	0	0	0	SEMINOLE	0	1	2	4	2
HARDEE	0	0	0	0	0	SUMTER	1	0	0	1	0
HENDRY	0	1	0	1	1	SUWANNEE	0	0	0	0	0
HERNANDO	1	1	1	1	0	TAYLOR	0	0	1	1	0
HIGHLANDS	0	0	0	0	2	UNION	0	0	0	0	0
HILLSBOROUGH	9	9	10	10	7	VOLUSIA	2	2	1	1	2
HOLMES	0	0	0	0	0	WAKULLA	0	0	0	0	0
INDIAN RIVER	0	0	1	0	2	WALTON	0	0	1	1	0
JACKSON	0	0	0	0	0	WASHINGTON	0	0	0	0	0
JEFFERSON	0	0	0	0	1						
LAFAYETTE	0	0	0	0	0	UNKNOWN	0	0	0	0	0
LAKE	5	1	3	3	1						
LEE	7	4	6	9	7	STATEWIDE	108	95	119	119	124
LEON	2	0	0	2	1						

County Data

2006 Florida Traffic Crash Statistics

TABLE 36

5 YEAR BICYCLIST INJURY HISTORY BY COUNTY

COUNTY	2002	2003	2004	2005	2006	COUNTY	2002	2003	2004	2005	2006
ALACHUA	121	107	80	66	86	LEVY	4	3	2	4	2
BAKER	2	6	4	2	0	LIBERTY	1	0	0	0	0
BAY	45	43	41	30	36	MADISON	0	2	4	2	2
BRADFORD	1	5	2	4	2	MANATEE	103	111	142	103	96
BREVARD	139	146	120	137	101	MARION	33	37	51	55	45
BROWARD	660	669	672	530	489	MARTIN	48	42	47	49	37
CALHOUN	0	1	1	0	0	MIAMI-DADE	566	596	508	444	391
CHARLOTTE	34	39	38	32	47	MONROE	98	93	100	92	84
CITRUS	15	14	18	13	10	NASSAU	9	4	6	10	6
CLAY	31	16	39	34	16	OKALOOSA	46	31	30	32	37
COLLIER	99	111	77	80	73	OKEECHOBEE	2	2	3	3	3
COLUMBIA	4	11	4	6	13	ORANGE	268	332	283	305	282
DE SOTO	10	10	7	5	7	OSCEOLA	38	38	47	48	39
DIXIE	0	2	0	1	0	PALM BEACH	421	378	380	383	338
DUVAL	254	211	230	221	208	PASCO	97	107	127	115	95
ESCAMBIA	69	84	72	74	77	PINELLAS	401	460	398	404	402
FLAGLER	12	9	15	13	13	POLK	115	112	90	108	108
FRANKLIN	2	0	3	1	0	PUTNAM	12	8	8	4	5
GADSDEN	1	8	0	5	2	ST. JOHNS	44	44	41	39	52
GILCHRIST	1	0	0	0	0	ST. LUCIE	47	51	39	37	46
GLADES	0	0	0	0	0	SANTA ROSA	12	23	13	12	21
GULF	2	2	0	0	0	SARASOTA	135	128	126	145	124
HAMILTON	1	0	2	0	0	SEMINOLE	77	69	68	64	61
HARDEE	4	0	4	3	2	SUMTER	8	6	5	4	7
HENDRY	7	8	2	3	6	SUWANNEE	3	0	2	2	2
HERNANDO	15	22	23	15	24	TAYLOR	2	4	1	1	2
HIGHLANDS	6	9	8	7	9	UNION	0	0	0	0	1
HILLSBOROUGH	417	355	401	418	365	VOLUSIA	187	172	167	142	134
HOLMES	0	0	0	0	0	WAKULLA	0	1	2	2	2
INDIAN RIVER	28	31	31	24	33	WALTON	4	7	9	12	7
JACKSON	1	4	1	1	2	WASHINGTON	1	2	2	1	2
JEFFERSON	0	1	0	0	0	UNKNOWN	0	1	0	0	0
LAFAYETTE	0	0	0	0	0	STATEWIDE	4,970	4,991	4,820	4,515	4,227
LAKE	29	35	26	22	32						
LEE	133	138	130	83	78						
LEON	45	30	68	63	63						

County Data

2006 Florida Traffic Crash Statistics

TABLE 37 5 YEAR PEDESTRIAN FATALITY HISTORY BY COUNTY

COUNTY	2002	2003	2004	2005	2006	COUNTY	2002	2003	2004	2005	2006
ALACHUA	2	3	5	7	5	LEVY	1	0	1	1	2
BAKER	1	0	0	0	1	LIBERTY	1	2	0	0	0
BAY	4	6	4	8	14	MADISON	0	0	0	0	0
BRADFORD	1	0	0	2	1	MANATEE	5	14	9	11	5
BREVARD	11	13	15	18	17	MARION	10	9	9	12	10
BROWARD	36	43	38	41	50	MARTIN	7	3	4	5	7
CALHOUN	0	0	2	0	0	MIAMI-DADE	82	74	64	81	90
CHARLOTTE	0	4	1	6	6	MONROE	1	5	5	3	4
CITRUS	5	6	8	3	4	NASSAU	1	2	1	2	3
CLAY	0	1	7	5	3	OKALOOSA	7	2	0	6	4
COLLIER	4	8	4	3	6	OKEECHOBEE	1	1	1	3	4
COLUMBIA	1	3	3	3	1	ORANGE	39	40	31	42	42
DE SOTO	0	0	2	0	1	OSCEOLA	5	6	7	9	1
DIXIE	0	1	0	0	0	PALM BEACH	25	44	28	36	39
DUVAL	21	16	31	34	26	PASCO	24	17	28	15	24
ESCAMBIA	10	7	6	12	8	PINELLAS	31	27	31	31	30
FLAGLER	1	3	1	2	0	POLK	15	13	15	23	18
FRANKLIN	0	0	0	0	1	PUTNAM	3	5	6	4	2
GADSDEN	0	3	2	2	1	ST. JOHNS	4	1	6	2	3
GILCHRIST	0	0	1	0	0	ST. LUCIE	6	3	4	11	7
GLADES	0	0	1	0	0	SANTA ROSA	5	5	4	1	3
GULF	0	0	0	0	0	SARASOTA	9	14	8	11	5
HAMILTON	0	0	0	0	0	SEMINOLE	6	3	9	8	5
HARDEE	3	0	2	3	3	SUMTER	2	2	2	0	2
HENDRY	3	2	1	3	1	SUWANNEE	2	1	3	1	2
HERNANDO	2	7	8	3	3	TAYLOR	1	0	1	1	1
HIGHLANDS	4	0	1	5	0	UNION	0	0	1	0	0
HILLSBOROUGH	36	36	40	28	31	VOLUSIA	20	16	17	17	16
HOLMES	0	1	0	0	0	WAKULLA	0	1	0	0	0
INDIAN RIVER	1	2	2	3	2	WALTON	2	6	3	2	0
JACKSON	2	2	1	0	2	WASHINGTON	0	0	1	0	0
JEFFERSON	1	0	0	0	2	UNKNOWN	0	0	0	0	0
LAFAYETTE	0	0	0	0	0	STATEWIDE	484	509	504	576	546
LAKE	7	4	5	10	3						
LEE	11	18	10	32	23						
LEON	2	4	4	5	2						

TABLE 38 5 YEAR PEDESTRIAN INJURY HISTORY BY COUNTY

COUNTY	2002	2003	2004	2005	2006	COUNTY	2002	2003	2004	2005	2006
ALACHUA	97	95	113	133	150	LEVY	7	6	5	10	5
BAKER	1	7	8	4	3	LIBERTY	1	0	1	0	1
BAY	67	73	81	92	66	MADISON	2	6	2	8	2
BRADFORD	10	8	9	7	8	MANATEE	130	102	117	120	116
BREVARD	175	155	175	162	149	MARION	74	67	79	93	83
BROWARD	938	1,040	923	956	908	MARTIN	42	39	42	54	49
CALHOUN	0	2	1	2	0	MIAMI-DADE	1,571	1,473	1,405	1,484	1,329
CHARLOTTE	47	49	45	60	43	MONROE	55	61	53	51	42
CITRUS	19	21	33	36	16	NASSAU	18	11	18	14	21
CLAY	49	44	53	41	45	OKALOOSA	52	43	50	50	57
COLLIER	73	84	74	97	100	OKEECHOBEE	9	11	5	7	12
COLUMBIA	19	11	11	17	10	ORANGE	494	467	506	564	551
DE SOTO	11	10	13	13	12	OSCEOLA	69	64	88	107	111
DIXIE	2	3	1	3	3	PALM BEACH	502	552	632	608	660
DUVAL	345	317	329	390	409	PASCO	123	124	152	146	147
ESCAMBIA	121	121	144	140	148	PINELLAS	443	393	423	436	443
FLAGLER	7	16	21	19	18	POLK	176	181	204	215	176
FRANKLIN	2	2	1	3	1	PUTNAM	29	35	29	20	20
GADSDEN	9	15	14	11	14	ST. JOHNS	41	47	36	53	56
GILCHRIST	2	5	0	2	2	ST. LUCIE	62	72	83	97	81
GLADES	2	0	3	4	5	SANTA ROSA	24	20	29	34	33
GULF	0	6	6	0	2	SARASOTA	124	124	104	118	121
HAMILTON	0	2	4	1	1	SEMINOLE	106	103	109	102	96
HARDEE	6	11	6	5	7	SUMTER	13	9	18	14	14
HENDRY	19	9	8	15	11	SUWANNEE	7	10	6	7	9
HERNANDO	44	39	44	52	58	TAYLOR	4	6	2	1	3
HIGHLANDS	23	13	20	15	19	UNION	0	1	0	2	1
HILLSBOROUGH	544	554	514	571	632	VOLUSIA	227	240	223	208	235
HOLMES	2	3	2	1	1	WAKULLA	8	1	1	6	3
INDIAN RIVER	26	39	42	32	38	WALTON	7	17	7	7	10
JACKSON	6	6	6	13	11	WASHINGTON	3	4	5	4	7
JEFFERSON	1	1	2	1	0	UNKNOWN	0	4	10	3	0
LAFAYETTE	2	1	0	1	0	STATEWIDE	7,447	7,449	7,551	7,975	7,754
LAKE	58	59	60	67	69						
LEE	178	219	216	224	176						
LEON	119	116	125	142	125						

County Data

2006 Florida Traffic Crash Statistics

TABLE 39 5 YEAR CMV-RELATED CRASH HISTORY BY COUNTY

COUNTY	2002	2003	2004	2005	2006	COUNTY	2002	2003	2004	2005	2006
ALACHUA	297	313	360	388	357	LEVY	30	36	40	49	33
BAKER	42	23	28	51	41	LIBERTY	12	6	7	11	8
BAY	116	128	150	172	178	MADISON	35	26	33	52	28
BRADFORD	45	42	37	61	38	MANATEE	242	270	280	310	305
BREVARD	281	323	340	351	333	MARION	275	326	383	478	421
BROWARD	1,774	1,867	1,825	1,963	1,875	MARTIN	147	163	185	183	161
CALHOUN	12	16	11	9	11	MIAMI-DADE	3,458	3,087	3,251	3,648	3,018
CHARLOTTE	127	149	252	282	221	MONROE	117	111	92	114	120
CITRUS	61	49	67	62	70	NASSAU	83	72	80	83	82
CLAY	134	109	124	99	119	OKALOOSA	101	117	133	116	132
COLLIER	256	244	229	303	240	OKEECHOBEE	52	52	56	63	67
COLUMBIA	105	94	102	91	111	ORANGE	1,124	997	1,226	1,415	1,350
DE SOTO	36	46	55	53	49	OSCEOLA	196	225	335	337	372
DIXIE	13	15	12	17	10	PALM BEACH	1,267	1,360	1,429	1,602	1,352
DUVAL	1,141	1,018	1,246	1,469	1,316	PASCO	258	293	468	472	419
ESCAMBIA	224	231	279	342	292	PINELLAS	723	734	794	876	833
FLAGLER	59	66	78	115	104	POLK	653	753	878	974	822
FRANKLIN	12	7	5	3	6	PUTNAM	78	71	90	97	96
GADSDEN	76	84	93	78	77	ST. JOHNS	193	290	220	254	239
GILCHRIST	4	12	16	9	9	ST. LUCIE	234	173	245	330	250
GLADES	32	33	29	30	46	SANTA ROSA	95	86	141	160	133
GULF	9	3	8	8	10	SARASOTA	256	276	301	360	278
HAMILTON	22	20	28	25	38	SEMINOLE	230	208	206	239	190
HARDEE	41	42	53	45	52	SUMTER	87	85	116	125	148
HENDRY	49	66	56	70	70	SUWANNEE	42	45	44	44	68
HERNANDO	115	90	139	141	153	TAYLOR	32	16	19	33	26
HIGHLANDS	102	108	112	108	108	UNION	14	18	17	14	11
HILLSBOROUGH	1,575	1,566	1,734	1,878	1,809	VOLUSIA	416	425	445	475	479
HOLMES	10	11	13	15	15	WAKULLA	14	15	12	15	8
INDIAN RIVER	115	113	134	139	153	WALTON	47	44	58	65	72
JACKSON	49	51	52	64	73	WASHINGTON	13	13	25	24	7
JEFFERSON	19	18	25	27	30	UNKNOWN	0	1	0	2	2
LAFAYETTE	4	7	3	8	17	STATEWIDE	18,479	18,456	20,443	22,804	20,774
LAKE	225	266	301	331	346						
LEE	461	528	537	665	573						
LEON	312	304	301	312	294						

County Data

2006 Florida Traffic Crash Statistics

TABLE 40

5 YEAR CMV-RELATED FATALITY HISTORY BY COUNTY

COUNTY	2002	2003	2004	2005	2006	COUNTY	2002	2003	2004	2005	2006
ALACHUA	9	9	14	9	5	LEVY	2	0	6	5	1
BAKER	5	0	0	2	6	LIBERTY	0	1	0	1	0
BAY	0	3	3	2	3	MADISON	3	1	2	2	3
BRADFORD	0	2	0	1	1	MANATEE	3	8	5	10	9
BREVARD	18	15	17	12	15	MARION	5	22	9	10	8
BROWARD	31	19	23	31	28	MARTIN	5	7	8	3	4
CALHOUN	1	1	0	1	0	MIAMI-DADE	54	42	31	51	41
CHARLOTTE	7	3	9	8	8	MONROE	5	8	4	4	3
CITRUS	2	4	3	1	6	NASSAU	2	4	2	2	3
CLAY	9	3	4	5	4	OKALOOSA	2	7	2	4	2
COLLIER	13	12	5	9	9	OKEECHOBEE	6	3	5	9	2
COLUMBIA	8	8	5	6	5	ORANGE	21	19	18	22	11
DE SOTO	2	2	5	6	5	OSCEOLA	10	11	13	12	16
DIXIE	0	1	3	1	0	PALM BEACH	31	35	27	25	32
DUVAL	17	21	16	28	26	PASCO	8	13	13	18	13
ESCAMBIA	5	6	2	9	5	PINELLAS	9	7	8	9	7
FLAGLER	2	4	2	7	3	POLK	28	21	42	30	28
FRANKLIN	1	0	0	0	0	PUTNAM	5	6	3	3	2
GADSDEN	4	4	5	2	1	ST. JOHNS	7	5	5	6	3
GILCHRIST	0	1	0	0	2	ST. LUCIE	13	6	12	10	7
GLADES	4	2	4	2	3	SANTA ROSA	5	4	3	1	6
GULF	1	0	0	1	0	SARASOTA	4	9	6	9	2
HAMILTON	0	2	8	0	1	SEMINOLE	5	6	7	6	1
HARDEE	1	3	1	1	1	SUMTER	8	2	4	3	4
HENDRY	1	3	5	3	6	SUWANNEE	0	1	6	5	2
HERNANDO	3	2	7	7	5	TAYLOR	0	0	0	0	0
HIGHLANDS	9	3	4	7	2	UNION	1	3	0	0	7
HILLSBOROUGH	28	29	24	31	15	VOLUSIA	15	6	15	23	13
HOLMES	0	3	0	2	1	WAKULLA	2	1	0	0	0
INDIAN RIVER	3	6	6	6	2	WALTON	1	3	6	4	6
JACKSON	1	3	3	4	5	WASHINGTON	0	0	2	5	0
JEFFERSON	2	0	1	1	1	UNKNOWN	0	0	0	0	0
LAFAYETTE	0	0	0	0	1	STATEWIDE	472	465	467	536	436
LAKE	10	15	10	12	10						
LEE	11	13	12	23	13						
LEON	4	2	2	4	2						

TABLE 41 5 YEAR CMV-RELATED INJURY HISTORY BY COUNTY

COUNTY	2002	2003	2004	2005	2006	COUNTY	2002	2003	2004	2005	2006
ALACHUA	278	237	249	276	261	LEVY	29	31	43	90	25
BAKER	36	25	25	40	36	LIBERTY	21	4	7	7	5
BAY	86	130	128	143	158	MADISON	34	30	30	42	20
BRADFORD	37	43	27	59	30	MANATEE	235	214	240	268	219
BREVARD	287	335	351	293	321	MARION	414	340	396	478	387
BROWARD	1,602	1,714	1,579	1,513	1,396	MARTIN	140	115	144	151	108
CALHOUN	11	37	8	16	13	MIAMI-DADE	3,129	2,752	2,877	2,981	2,395
CHARLOTTE	84	96	162	190	158	MONROE	87	67	74	98	124
CITRUS	53	109	63	53	50	NASSAU	72	52	71	79	107
CLAY	130	73	87	96	69	OKALOOSA	95	106	129	111	109
COLLIER	230	215	227	215	190	OKEECHOBEE	58	38	55	65	85
COLUMBIA	133	115	123	57	103	ORANGE	1,137	1,035	1,251	1,203	1,169
DE SOTO	32	29	57	52	55	OSCEOLA	209	200	290	238	321
DIXIE	13	6	18	12	8	PALM BEACH	1,154	1,217	1,326	1,483	1,146
DUVAL	934	816	1,039	1,252	1,088	PASCO	242	413	543	745	510
ESCAMBIA	244	269	280	314	235	PINELLAS	612	586	581	646	669
FLAGLER	120	62	61	90	92	POLK	624	795	782	729	624
FRANKLIN	9	6	6	1	6	PUTNAM	56	63	53	69	74
GADSDEN	86	69	93	76	68	ST. JOHNS	173	232	184	194	147
GILCHRIST	4	8	10	5	8	ST. LUCIE	207	148	173	250	186
GLADES	20	17	24	31	33	SANTA ROSA	130	98	125	169	150
GULF	5	4	4	4	10	SARASOTA	261	258	239	268	171
HAMILTON	16	8	27	13	24	SEMINOLE	223	199	165	157	127
HARDEE	48	38	49	41	41	SUMTER	93	102	86	110	129
HENDRY	50	58	50	64	50	SUWANNEE	26	32	56	53	38
HERNANDO	126	130	147	150	155	TAYLOR	30	15	17	26	12
HIGHLANDS	94	127	85	90	86	UNION	12	16	17	10	19
HILLSBOROUGH	1,336	1,524	1,357	1,429	1,441	VOLUSIA	363	348	375	400	363
HOLMES	10	17	22	15	12	WAKULLA	13	9	13	25	11
INDIAN RIVER	117	84	107	125	169	WALTON	42	59	90	59	57
JACKSON	43	66	33	51	52	WASHINGTON	15	10	30	30	8
JEFFERSON	19	19	21	24	30	UNKNOWN	0	2	0	1	1
LAFAYETTE	2	5	2	7	8	STATEWIDE	17,088	17,026	18,053	19,213	16,942
LAKE	180	247	330	328	322						
LEE	392	468	474	650	414						
LEON	285	234	266	203	234						

Alcohol-Related Crashes By City/Locality

2006 Florida Traffic Crash Statistics

TABLE 42

Locality	County	Alcohol-Related Crashes			Locality	County	Alcohol-Related Crashes		
		Total Crashes	Related Crashes	as % of Total			Total Crashes	Related Crashes	as % of Total
Alachua	Alachua	159	7	4.40	Bronson	Levy	15	0	0.00
Alford	Jackson	1	1	100.00	Brooksville	Hernando	111	19	17.12
Altamonte Springs	Seminole	385	58	15.06	Browardale	Broward	1	1	100.00
Altha	Calhoun	2	0	0.00	Buena Vista	Pasco	3	0	0.00
Anna Maria	Manatee	9	0	0.00	Bunche Park	Miami-Dade	7	0	0.00
Apalachicola	Franklin	4	1	25.00	Bunnell	Flagler	94	15	15.96
Apopka	Orange	322	39	12.11	Bushnell	Sumter	25	1	4.00
Arcadia	DeSoto	83	8	9.64	Callahan	Nassau	20	2	10.00
Archer	Alachua	19	3	15.79	Calloway	Bay	101	13	12.87
Astula	Lake	3	1	33.33	Cantonment	Escambia	60	8	13.33
Atlantic Beach	Duval	113	28	24.78	Cape Canaveral	Brevard	83	24	28.92
Atlantis	Palm Beach	40	5	12.50	Cape Coral	Lee	906	104	11.48
Auburndale	Polk	233	28	12.02	Carol City	Miami-Dade	98	1	1.02
Aventura	Miami-Dade	752	25	3.32	Carver Ranch Estates	Broward	1	0	0.00
Avon Park	Highlands	120	11	9.17	Caryville	Washington	35	6	17.14
Bal Harbour	Miami-Dade	40	3	7.50	Casselberry	Seminole	248	46	18.55
Baldwin	Duval	8	1	12.50	Cecil Field NAS	Duval	1	0	0.00
Bartow	Polk	271	17	6.27	Cedar Grove	Bay	50	9	18.00
Bay Harbor Islands	Miami-Dade	28	1	3.57	Cedar Hammock/Bradenton Shores	Manatee	1	1	100.00
Bay Lake	Orange	9	0	0.00	Cedar Key	Levy	1	0	0.00
Bayard	Duval	3	0	0.00	Center Hill	Sumter	1	0	0.00
Belle Glade	Palm Beach	156	10	6.41	Century	Escambia	11	0	0.00
Belle Isle	Orange	5	0	0.00	Chattahoochee	Gadsden	21	3	14.29
Belleair	Pinellas	11	2	18.18	Chiefland	Levy	64	6	9.38
Belleair Beach	Pinellas	13	0	0.00	Cinco Bayou	Okaloosa	3	2	66.67
Belleair Bluffs	Pinellas	26	2	7.69	Clair-Mel	Hillsborough	1	0	0.00
Belleview	Marion	146	4	2.74	Clearwater	Pinellas	1,647	248	15.06
Beverly Beach	Flagler	2	0	0.00	Clermont	Lake	263	14	5.32
Biscayne Gardens	Miami-Dade	1	0	0.00	Clewiston	Hendry	64	6	9.38
Biscayne Park	Miami-Dade	2	0	0.00	Cocoa	Brevard	387	35	9.04
Blountstown	Calhoun	9	0	0.00	Cocoa Beach	Brevard	278	55	19.78
Boca Raton	Palm Beach	1,520	75	4.93	Coconut Creek	Broward	602	50	8.31
Bonifay	Holmes	1	0	0.00	Coconut Grove	Miami-Dade	87	0	0.00
Bonita Springs	Lee	153	15	9.80	Coleman	Sumter	3	0	0.00
Booker	Bradford	5	4	80.00	Collier Manor/Cresthaven	Broward	10	2	20.00
Bowling Green	Hardee	26	8	30.77	Conway	Orange	6	1	16.67
Boynton Beach	Palm Beach	923	76	8.23	Cooper City	Broward	313	21	6.71
Bradenton	Manatee	373	31	8.31	Coral Gables	Miami-Dade	921	49	5.32
Bradenton Beach	Manatee	24	8	33.33	Coral Springs	Broward	1,500	55	3.67
Brandon	Hillsborough	164	12	7.32	Coral Way Village	Miami-Dade	20	0	0.00
Branford	Suwannee	7	1	14.29	Cottondale	Jackson	3	0	0.00
Brent	Escambia	108	8	7.41	Crawfordville	Wakulla	25	7	28.00
Briny Breezes	Palm Beach	3	1	33.33	Crescent City	Putnam	40	5	12.50
Bristol	Liberty	9	0	0.00	Crestview	Okaloosa	384	29	7.55
Broadview	Broward	2	0	0.00	Cross City	Dixie	5	0	0.00

Alcohol-Related Crashes By City/Locality

2006 Florida Traffic Crash Statistics

TABLE 42

Locality	County	Total Crashes	Alcohol-Related Crashes		Locality	County	Total Crashes	Alcohol-Related Crashes	
			Related Crashes	as % of Total				Related Crashes	as % of Total
Crystal River	Citrus	121	17	14.05	Florida Institute of Technology	Brevard	1	0	0.00
Cutler Ridge	Miami-Dade	44	0	0.00	Florida International University	Miami-Dade	16	0	0.00
Dade City	Pasco	218	9	4.13	Florida State University	Leon	23	3	13.04
Dade County School PD	Miami-Dade	70	1	1.43	Fort Lauderdale	Broward	3,999	288	7.20
Dania Beach	Broward	532	30	5.64	Fort Meade	Polk	47	4	8.51
Davenport	Polk	2	0	0.00	Fort Myers	Lee	2,213	173	7.82
Davie	Broward	1,828	156	8.53	Fort Myers Beach	Lee	40	12	30.00
Daytona Beach	Volusia	2,010	153	7.61	Fort Myers SE	Lee	1	0	0.00
Daytona Beach Shores	Volusia	45	13	28.89	Fort Myers SW	Lee	1	0	0.00
De Leon Springs	Volusia	7	0	0.00	Fort Myers Village/Pin Mn	Lee	2	1	50.00
DeBary	Volusia	78	4	5.13	Fort Pierce	St. Lucie	690	65	9.42
Deerfield Beach	Broward	1,403	93	6.63	Fort Pierce NW	St. Lucie	15	1	6.67
Defuniak Springs	Walton	42	3	7.14	Fort Walton Beach	Okaloosa	337	42	12.46
DeLand	Volusia	395	37	9.37	Freeport	Walton	25	2	8.00
Delray Beach	Palm Beach	867	87	10.03	Frostproof	Polk	19	4	21.05
Deltona	Volusia	510	62	12.16	Fruitland Park	Lake	64	7	10.94
Destin	Okaloosa	227	59	25.99	Gainesville	Alachua	2,364	174	7.36
Doral	Miami-Dade	617	27	4.38	Glen Ridge	Palm Beach	1	0	0.00
Dundee	Polk	65	3	4.62	Glen St. Mary	Baker	2	0	0.00
Dunedin	Pinellas	438	48	10.96	Golden Beach	Miami-Dade	13	2	15.38
Dunnellon	Marion	2	0	0.00	Golden Glades	Miami-Dade	7	1	14.29
Eagle Lake	Polk	20	1	5.00	Golf Village	Palm Beach	1	0	0.00
Eagle Peak	Polk	1	0	0.00	Golfview	Palm Beach	1	0	0.00
East Auburndale	Polk	1	0	0.00	Goulds	Miami-Dade	16	1	6.25
East Naples	Collier	133	14	10.53	Graceville	Jackson	12	3	25.00
Eastpoint	Franklin	17	7	41.18	Grand Ridge	Jackson	3	0	0.00
Eatonville	Orange	1	0	0.00	Green Cove Springs	Clay	102	5	4.90
Ebro	Washington	6	1	16.67	Greenacres City	Palm Beach	276	27	9.78
Edgewater	Volusia	187	28	14.97	Greensboro	Gadsden	1	0	0.00
Edgewood	Orange	45	3	6.67	Greenville	Madison	6	2	33.33
El Portal	Miami-Dade	4	0	0.00	Gretna	Gadsden	4	0	0.00
Englewood	Sarasota	6	1	16.67	Groveland	Lake	75	4	5.33
Englewood	Charlotte	75	7	9.33	Gulf Breeze	Santa Rosa	105	14	13.33
Eto	Holmes	2	0	0.00	Gulf Stream	Palm Beach	9	3	33.33
Eustis	Lake	170	24	14.12	Gulfport	Pinellas	81	7	8.64
Everglades	Collier	6	3	50.00	Haines City	Polk	355	24	6.76
Fanning Springs	Levy	7	4	57.14	Hallandale	Broward	568	50	8.80
Fanning Springs	Gilchrist	2	0	0.00	Hampton	Bradford	2	0	0.00
Fellsmere	Indian River	17	2	11.76	Hastings	St. Johns	5	1	20.00
Fernandina Beach	Nassau	108	23	21.30	Havana	Gadsden	4	1	25.00
Flagler Beach	Flagler	25	5	20.00	Haverhill	Palm Beach	11	2	18.18
Floralia	Walton	1	0	0.00	Hawthorne	Alachua	24	1	4.17
Florida A&M University	Leon	30	0	0.00	Hialeah	Miami-Dade	3,657	144	3.94
Florida Atlantic University	Palm Beach	46	3	6.52	Hialeah Gardens	Miami-Dade	197	6	3.05
Florida City	Miami-Dade	267	16	5.99	High Springs	Alachua	2	0	0.00

Alcohol-Related Crashes By City/Locality

2006 Florida Traffic Crash Statistics

TABLE 42

Locality	County	Alcohol-Related Crashes			Locality	County	Alcohol-Related Crashes		
		Total Crashes	Related Crashes	as % of Total			Total Crashes	Related Crashes	as % of Total
Highland Beach	Palm Beach	11	1	9.09	Kissimmee	Osceola	495	41	8.28
Hilliard	Nassau	13	5	38.46	La Belle	Hendry	49	7	14.29
Hillsboro Beach	Broward	13	0	0.00	La Crosse	Alachua	1	0	0.00
Hobe Sound	Martin	54	13	24.07	Lady Lake	Lake	153	6	3.92
Holden Hills	Orange	1	0	0.00	Lake Alfred	Polk	3	1	33.33
Holly Hill	Volusia	197	28	14.21	Lake Buena Vista	Orange	52	3	5.77
Hollywood	Broward	2,455	157	6.40	Lake Butler	Union	25	3	12.00
Holmes Beach	Manatee	30	4	13.33	Lake Carroll	Hillsborough	1	0	0.00
Homestead	Miami-Dade	505	56	11.09	Lake City	Columbia	169	19	11.24
Homosassa Springs	Citrus	35	7	20.00	Lake Clark Shores	Palm Beach	11	1	9.09
Horseshoe Beach	Dixie	1	0	0.00	Lake Hamilton	Polk	41	2	4.88
Howey-in-the-Hills	Lake	14	0	0.00	Lake Helen	Volusia	15	5	33.33
Hypoluxo	Palm Beach	13	2	15.38	Lake Magdalene	Hillsborough	1	0	0.00
Immolakee	Collier	192	39	20.31	Lake Mary	Seminole	91	20	21.98
Indialantic	Brevard	24	4	16.67	Lake Park	Palm Beach	106	8	7.55
Indian Creek Village	Miami-Dade	5	0	0.00	Lake Placid	Highlands	71	3	4.23
Indian Harbour Beach	Brevard	27	2	7.41	Lake Wales	Polk	132	12	9.09
Indian River Shores	Indian River	17	3	17.65	Lake Worth	Palm Beach	797	93	11.67
Indian Rocks Beach	Pinellas	40	11	27.50	Lakeland	Polk	1,307	179	13.70
Indian Shores	Pinellas	10	4	40.00	Land O' Lakes	Pasco	130	9	6.92
Indiantown	Martin	53	16	30.19	Lantana	Palm Beach	271	17	6.27
Inglis	Levy	7	2	28.57	Largo	Pinellas	1,083	145	13.39
Interlachen	Putnam	14	3	21.43	Lauderdale by the Sea	Broward	63	4	6.35
Inverness	Citrus	114	16	14.04	Lauderdale Lakes	Broward	441	20	4.54
Islamorada	Monroe	96	14	14.58	Lauderhill	Broward	627	29	4.63
Islandia	Miami-Dade	3	0	0.00	Laurel Hill	Okaloosa	1	0	0.00
Jacksonville	Duval	14,642	1,144	7.81	Lawtey	Bradford	9	0	0.00
Jacksonville Beach	Duval	577	92	15.94	Layton	Monroe	2	1	50.00
Jacksonville Duval Co Sch Brd PD	Duval	7	0	0.00	Lazy Lake Village	Broward	2	1	50.00
Jacksonville NAS	Duval	2	1	50.00	Lealman	Pinellas	2	0	0.00
Jasper	Hamilton	32	1	3.13	Lee County Airport Police	Lee	16	0	0.00
Jay	Santa Rosa	2	0	0.00	Leesburg	Lake	296	47	15.88
Jennings	Hamilton	4	1	25.00	Lehigh Acres	Lee	72	15	20.83
Jensen Beach	Martin	127	21	16.54	Leisure City	Miami-Dade	5	1	20.00
Juno Beach	Palm Beach	42	5	11.90	Lighthouse Point	Broward	159	17	10.69
Jupiter	Palm Beach	468	78	16.67	Live Oak	Suwannee	98	18	18.37
Jupiter Inlet Colony	Palm Beach	1	0	0.00	Longboat Key	Manatee	14	2	14.29
Jupiter Island	Martin	10	0	0.00	Longboat Key	Sarasota	23	3	13.04
Kendall	Miami-Dade	137	9	6.57	Longwood	Seminole	190	26	13.68
Kennedy Space Center	Brevard	19	3	15.79	Lynn Haven	Bay	165	8	4.85
Kenneth City	Pinellas	41	4	9.76	Macclenny	Baker	63	7	11.11
Key Biscayne	Miami-Dade	40	1	2.50	Madeira Beach	Pinellas	87	16	18.39
Key Largo	Monroe	181	24	13.26	Madison	Madison	44	2	4.55
Key West	Monroe	631	119	18.86	Maitland	Orange	208	33	15.87
Keystone Heights	Clay	13	3	23.08	Malabar	Brevard	17	2	11.76

Alcohol-Related Crashes By City/Locality

2006 Florida Traffic Crash Statistics

TABLE 42

Locality	County	Total Crashes	Alcohol-Related Crashes		Locality	County	Total Crashes	Alcohol-Related Crashes	
			Related Crashes	as % of Total				Related Crashes	as % of Total
Malone	Jackson	1	0	0.00	Newberry	Alachua	26	3	11.54
Mandarin	Duval	2	0	0.00	Niceville	Okaloosa	125	12	9.60
Mangonia Park	Palm Beach	83	4	4.82	Nokomis/Laurel	Sarasota	3	0	0.00
Marathon	Monroe	135	19	14.07	North Bay	Miami-Dade	1	0	0.00
Margate	Broward	525	49	9.33	North Bay Village	Miami-Dade	48	5	10.42
Marianna	Jackson	63	2	3.17	North Fort Myers	Lee	31	4	12.90
Mary Esther	Okaloosa	29	3	10.34	North Lauderdale	Broward	302	13	4.30
Mascotte	Lake	36	7	19.44	North Miami	Miami-Dade	1,484	33	2.22
Mayo	Lafayette	17	4	23.53	North Miami Beach	Miami-Dade	743	25	3.36
McCoy AFB	Orange	1	1	100.00	North Naples	Collier	101	27	26.73
McIntosh	Marion	1	0	0.00	North Palm Beach	Palm Beach	122	9	7.38
Medley	Miami-Dade	123	6	4.88	North Port	Sarasota	356	47	13.20
Melbourne	Brevard	733	109	14.87	North Redington Beach	Pinellas	6	0	0.00
Melbourne AA	Brevard	1	0	0.00	Norwood	Miami-Dade	1	0	0.00
Melbourne Beach	Brevard	17	6	35.29	Oak Hill	Volusia	11	3	27.27
Melbourne Village	Brevard	3	0	0.00	Oakland	Orange	42	0	0.00
Merritt Island	Brevard	363	60	16.53	Oakland Park	Broward	842	64	7.60
Mexico Beach	Bay	10	1	10.00	Ocala	Marion	1,369	87	6.36
Miami	Miami-Dade	8,921	342	3.83	Ocean Breeze Park	Martin	1	0	0.00
Miami Beach	Miami-Dade	2,346	231	9.85	Ocean City	Okaloosa	1	0	0.00
Miami Gardens	Miami-Dade	1,166	28	2.40	Ocean Ridge	Palm Beach	10	1	10.00
Miami Lakes	Miami-Dade	388	15	3.87	Ocean Ridge Park	Martin	1	1	100.00
Miami Shores	Miami-Dade	112	1	0.89	Ocoee	Orange	289	17	5.88
Miami Springs	Miami-Dade	97	3	3.09	Ojus	Miami-Dade	1	0	0.00
Miami TP	Miami-Dade	6	1	16.67	Okeechobee	Okeechobee	108	14	12.96
Micanopy	Alachua	6	0	0.00	Oldsmar	Pinellas	218	26	11.93
Miccosukee Indian Reservation	Miami-Dade	15	3	20.00	Olympia Heights	Miami-Dade	2	1	50.00
Middleburg	Clay	31	4	12.90	Oneco	Manatee	1	0	0.00
Midway	Gadsden	54	10	18.52	Opa Locka	Miami-Dade	87	5	5.75
Milton	Santa Rosa	173	20	11.56	Orange City	Volusia	199	18	9.05
Mims	Brevard	50	5	10.00	Orange Park	Clay	126	15	11.90
Minneola	Lake	27	3	11.11	Orlando	Orange	5,712	367	6.43
Miramar	Broward	794	53	6.68	Orlando TP	Orange	1	0	0.00
Monticello	Jefferson	4	0	0.00	Orlovista	Orange	2	1	50.00
Montverde	Lake	4	0	0.00	Ormond Beach	Volusia	440	57	12.95
Moore Haven	Glades	16	3	18.75	Ormond By The Sea	Volusia	7	2	28.57
Mount Dora	Orange	1	0	0.00	Otter Creek	Levy	4	1	25.00
Mount Dora	Lake	263	32	12.17	Oviedo	Seminole	143	13	9.09
Mulberry	Polk	20	2	10.00	Pahokee	Palm Beach	35	1	2.86
Myrtle Grove	Escambia	16	3	18.75	Palatka	Putnam	327	9	2.75
Naples	Collier	307	32	10.42	Palm Bay	Brevard	616	83	13.47
Naranja	Miami-Dade	10	0	0.00	Palm Beach	Palm Beach	91	11	12.09
Neptune Beach	Duval	62	17	27.42	Palm Beach AFB	Palm Beach	13	0	0.00
New Port Richey	Pasco	326	61	18.71	Palm Beach Gardens	Palm Beach	445	52	11.69
New Smyrna Beach	Volusia	378	63	16.67	Palm Beach Shores	Palm Beach	5	1	20.00

Alcohol-Related Crashes By City/Locality

2006 Florida Traffic Crash Statistics

TABLE 42

Locality	County	Total Crashes	Alcohol-Related Crashes	Alcohol-Related Crashes as % of Total	Locality	County	Total Crashes	Alcohol-Related Crashes	Alcohol-Related Crashes as % of Total
Palm City	Martin	70	14	20.00	Redington Shores	Pinellas	14	6	42.86
Palm River/Clair Mel	Hillsborough	1	0	0.00	Richmond Heights	Miami-Dade	207	2	0.97
Palm Shores	Brevard	2	0	0.00	Riviera Beach	Palm Beach	572	40	6.99
Palm Springs	Palm Beach	145	16	11.03	Rockledge	Brevard	100	12	12.00
Palmetto	Manatee	242	24	9.92	Royal Palm Beach	Palm Beach	329	43	13.07
Palmetto Bay	Miami-Dade	235	6	2.55	Ruskin	Hillsborough	24	3	12.50
Palmetto Estates	Miami-Dade	1	0	0.00	Safety Harbor	Pinellas	170	24	14.12
Panama City	Bay	1,219	121	9.93	Saint Leo	Pasco	6	0	0.00
Panama City Beach	Bay	276	55	19.93	San Antonio	Pasco	16	0	0.00
Parker	Bay	36	6	16.67	Sanford	Seminole	523	69	13.19
Parkland	Broward	35	2	5.71	Sanibel	Lee	38	6	15.79
Parrish	Manatee	1	0	0.00	Santa Fe Community College	Alachua	3	0	0.00
Patrick AFB	Brevard	1	0	0.00	Santa Rosa Beach	Walton	26	6	23.08
Paxton	Walton	2	0	0.00	Sarasota	Sarasota	991	94	9.49
Pembroke Park	Broward	172	14	8.14	Sarasota South	Sarasota	3	0	0.00
Pembroke Pines	Broward	1,728	66	3.82	Sarasota Southeast	Sarasota	1	0	0.00
Penny Farms	Clay	1	0	0.00	Sarasota-Manatee Airport	Sarasota	7	1	14.29
Pensacola	Escambia	1,059	163	15.39	Satellite Beach	Brevard	64	14	21.88
Perrine	Miami-Dade	5	0	0.00	Sea Ranch Lakes	Broward	2	0	0.00
Perry	Taylor	123	10	8.13	Sebastian	Indian River	89	15	16.85
Pierson	Volusia	9	1	11.11	Sebring	Highlands	135	13	9.63
Pine Crest Village	Miami-Dade	84	1	1.19	Seminole	Pinellas	335	44	13.13
Pine Hills	Orange	1	0	0.00	Seminole Indian Reservation	Broward	182	25	13.74
Pinellas Park	Pinellas	1,032	112	10.85	Seminole Park	Pinellas	10	1	10.00
Pinewood	Miami-Dade	3	0	0.00	Seville	Volusia	1	0	0.00
Plant City	Hillsborough	430	34	7.91	Sewalls Point	Martin	13	1	7.69
Plantation	Broward	959	65	6.78	Shalimar	Okaloosa	29	4	13.79
Polk City	Polk	7	2	28.57	Silver Springs Shore	Marion	6	1	16.67
Pompano Beach	Broward	2,353	134	5.69	Sky Lake	Orange	1	0	0.00
Pompano Beach Highlands	Broward	9	1	11.11	Sneads	Jackson	5	1	20.00
Ponce De Leon	Holmes	6	0	0.00	Sopchoppy	Wakulla	3	1	33.33
Ponce Inlet	Volusia	13	2	15.38	South Bay	Palm Beach	27	1	3.70
Ponte Vedra	St. Johns	13	3	23.08	South Daytona	Volusia	127	27	21.26
Port Charlotte	Sarasota	2	0	0.00	South Miami	Miami-Dade	269	13	4.83
Port Charlotte	Charlotte	379	22	5.80	South Miami Heights	Miami-Dade	5	0	0.00
Port Orange	Volusia	328	45	13.72	South Palm Beach	Palm Beach	2	0	0.00
Port Richey	Pasco	158	19	12.03	South Pasadena	Pinellas	99	9	9.09
Port Saint Joe	Gulf	25	6	24.00	South Patrick Shores	Brevard	3	0	0.00
Port Salerno	Martin	34	9	26.47	Springfield	Bay	5	1	20.00
Port St. Lucie	St. Lucie	891	107	12.01	St. Augustine	St. Johns	232	51	21.98
Punta Gorda	Charlotte	124	16	12.90	St. Augustine Beach	St. Johns	42	5	11.90
Quincy	Gadsden	91	10	10.99	St. Cloud	Osceola	354	26	7.34
Raiford	Union	1	0	0.00	St. Lucie Village	St. Lucie	1	0	0.00
Reddick	Marion	1	1	100.00	St. Pete/Clearwater Airport	Pinellas	1	0	0.00
Redington Beach	Pinellas	3	1	33.33	St. Petersburg	Pinellas	3,894	359	9.22

Alcohol-Related Crashes By City/Locality

2006 Florida Traffic Crash Statistics

TABLE 42

Locality	County	Total Crashes	Alcohol-Related Crashes		Locality	County	Total Crashes	Alcohol-Related Crashes	
			Related Crashes	as % of Total				Related Crashes	as % of Total
St. Petersburg Beach	Pinellas	121	24	19.83	West Hollywood	Broward	4	0	0.00
Starke	Bradford	142	7	4.93	West Melbourne	Brevard	106	15	14.15
Steinhatchee	Taylor	3	1	33.33	West Miami	Miami-Dade	60	1	1.67
Stuart	Martin	456	56	12.28	West Palm Beach	Palm Beach	1,681	150	8.92
Sunny Isles	Miami-Dade	198	15	7.58	West Park	Broward	198	13	6.57
Sunrise	Broward	661	22	3.33	West Pensacola	Escambia	150	12	8.00
Surfside	Miami-Dade	53	5	9.43	Weston	Broward	452	23	5.09
Sweetwater	Miami-Dade	143	6	4.20	Westville	Holmes	1	0	0.00
Tallahassee	Leon	4,378	312	7.13	Wewahitchka	Gulf	4	1	25.00
Tamarac	Broward	761	31	4.07	Wildwood	Sumter	49	3	6.12
Tampa	Hillsborough	10,075	690	6.85	Williston	Levy	33	2	6.06
Tampa International Airport	Hillsborough	61	4	6.56	Wilton Manors	Broward	187	20	10.70
Tarpon Springs	Pinellas	397	43	10.83	Windermere	Orange	23	4	17.39
Tavares	Lake	120	13	10.83	Winter Garden	Orange	314	28	8.92
Tavernier	Monroe	27	2	7.41	Winter Haven	Polk	461	30	6.51
Temple Terrace	Hillsborough	261	18	6.90	Winter Park	Orange	265	28	10.57
Tequesta Village	Palm Beach	24	3	12.50	Winter Springs	Seminole	80	6	7.50
Tice	Lee	1	1	100.00	Worthing Springs	Union	2	0	0.00
Titusville	Brevard	466	55	11.80	Yankeetown	Levy	1	1	100.00
Treasure Island	Pinellas	84	21	25.00	Yulee	Nassau	43	6	13.95
Trenton	Gilchrist	14	0	0.00	Zephyrhills	Pasco	246	17	6.91
Tyndall AFB	Bay	1	0	0.00	Zolfo Springs	Hardee	8	1	12.50
Uleta	Miami-Dade	2	0	0.00					
Umatilla	Lake	26	1	3.85					
University of Central Florida	Orange	25	2	8.00					
University of Florida	Alachua	42	3	7.14					
University of Miami	Miami-Dade	11	0	0.00					
University of South Florida	Hillsborough	73	1	1.37					
University of Tampa	Hillsborough	1	0	0.00					
University of West Florida	Escambia	4	0	0.00					
Valparaiso	Okaloosa	38	4	10.53					
Venice	Sarasota	228	16	7.02					
Venice South	Sarasota	2	0	0.00					
Vernon	Washington	4	0	0.00					
Vero Beach	Indian River	401	45	11.22					
Vero Beach South	Indian River	1	1	100.00					
Wahneta	Polk	2	0	0.00					
Waldo	Alachua	2	0	0.00					
Warrington	Escambia	11	0	0.00					
Wauchula	Hardee	81	7	8.64					
Wausau	Washington	1	0	0.00					
Webster	Sumter	2	1	50.00					
Weekiwachee	Hernando	4	2	50.00					
Wellington	Palm Beach	261	24	9.20					
West Bradenton	Manatee	362	42	11.60					

FLORIDA TRAFFIC CRASH REPORT

LONG FORM

MAIL TO: DEPT. OF HIGHWAY SAFETY & MOTOR VEHICLES, TRAFFIC CRASH RECORDS, NEIL KIRKMAN BUILDING, TALLAHASSEE, FL 32399-0537

DO NOT WRITE IN THIS SPACE

Time & Location	DATE OF CRASH	TIME OF CRASH	TIME OFFICER NOTIFIED	TIME OFFICER ARRIVED	INVEST. AGENCY REPORT NUMBER	HSMV CRASH REPORT NUMBER 76063003	
	COUNTY / CITY CODE	FEET or MILE(S)	N S E W	CITY OR TOWN	(Check if in City or Town)	COUNTY	
	AT NODE NO.	FEET or MILE(S)	FROM NODE NO.	NEXT NODE NO.	NO. OF LANES	1. DIVIDED 2. UNDIVIDED	ON STREET, ROAD OR HIGHWAY
	AT THE INTERSECTION OF (street, road or highway)	FEET	MILE(S)	N S E W	FROM INTERSECTION OF (street, road or highway)		

Section 1 Vehicle Pedestrian	DRIVER ACTION	1. Phantom 2. Hit & Run 3. N/A	YEAR	MAKE	TYPE	USE	VEH. LICENSE NUMBER	STATE	VEHICLE IDENTIFICATION NUMBER	2 3 4 5 6 7 8 9 10 11 12 13 14 15 16 17 18 19 20 21	18. Undercarriage 19. Overturn 20. Windshield 21. Trailer			
	TRAILER OR TOWED VEHICLE INFORMATION									SHOW FIRST POINT OF VEHICLE				
	VEHICLE TRAVELLING	ON	AT	Est. MPH	Posted Speed	EST. VEHICLE DAMAGE	1. Disabling 2. Functional 3. No Damage	EST. TRAILER DAMAGE	DAMAGE AND CIRCLE	DAMAGED AREA(S)				
	MOTOR VEHICLE INSURANCE COMPANY (LIABILITY OR PIP)		POLICY NUMBER	VEHICLE REMOVED BY:		1. Tow Rotation List	3. Driver							
	NAME OF VEHICLE OWNER (Check Box If Same As Driver)	<input type="checkbox"/>	CURRENT ADDRESS (Number and Street)	CITY AND STATE		ZIP CODE								
	NAME OF OWNER (Trailer or Towed Vehicle)		CURRENT ADDRESS (Number and Street)	CITY AND STATE		ZIP CODE								
	NAME OF MOTOR CARRIER (Commercial Vehicle Only)		CURRENT ADDRESS (Number and Street)	CITY, STATE AND ZIP CODE		US DOT or ICC MC IDENTIFICATION NUMBERS								
	NAME OF DRIVER (Take From Driver License) / PEDESTRIAN		CURRENT ADDRESS (Number and Street)	CITY, STATE & ZIP CODE		DATE OF BIRTH								
	DRIVER LICENSE NUMBER	STATE	DL TYPE	REQ. END.	ALC/DRUG TEST TYPE	RESULTS	ALC/DRUG	PHYS. DEF.	RES.	RACE	SEX	INJ.	S. EQUIP.	EJECT.
	HAZARDOUS MATERIALS BEING TRANSPORTED	PLACARDED	IF YES, INDICATE NAME OR 4 DIGIT NUMBER FROM DIAMOND OR BOX ON PLACARD, AND 1 DIGIT NUMBER FROM BOTTOM OF DIAMOND			WAS HAZARDOUS MATERIAL SPILLED?	RECOMMEND DRIVER RE-EXAM, IF YES EXPLAIN IN NARRATIVE	DRIVER'S PHONE NO.						

Section 2 Vehicle Pedestrian	DRIVER ACTION	1. Phantom 2. Hit & Run 3. N/A	YEAR	MAKE	TYPE	USE	VEH. LICENSE NUMBER	STATE	VEHICLE IDENTIFICATION NUMBER	2 3 4 5 6 7 8 9 10 11 12 13 14 15 16 17 18 19 20 21	18. Undercarriage 19. Overturn 20. Windshield 21. Trailer			
	TRAILER OR TOWED VEHICLE INFORMATION									SHOW FIRST POINT OF VEHICLE				
	VEHICLE TRAVELLING	ON	AT	Est. MPH	Posted Speed	EST. VEHICLE DAMAGE	1. Disabling 2. Functional 3. No Damage	EST. TRAILER DAMAGE	DAMAGE AND CIRCLE	DAMAGED AREA(S)				
	MOTOR VEHICLE INSURANCE COMPANY (LIABILITY OR PIP)		POLICY NUMBER	VEHICLE REMOVED BY:		1. Tow Rotation List	3. Driver							
	NAME OF VEHICLE OWNER (Check Box If Same As Driver)	<input type="checkbox"/>	CURRENT ADDRESS (Number and Street)	CITY AND STATE		ZIP CODE								
	NAME OF OWNER (Trailer or Towed Vehicle)		CURRENT ADDRESS (Number and Street)	CITY AND STATE		ZIP CODE								
	NAME OF MOTOR CARRIER (Commercial Vehicle Only)		CURRENT ADDRESS (Number and Street)	CITY, STATE AND ZIP CODE		US DOT or ICC MC IDENTIFICATION NUMBERS								
	NAME OF DRIVER (Take From Driver License) / PEDESTRIAN		CURRENT ADDRESS (Number and Street)	CITY, STATE & ZIP CODE		DATE OF BIRTH								
	DRIVER LICENSE NUMBER	STATE	DL TYPE	REQ. END.	ALC/DRUG TEST TYPE	RESULTS	ALC/DRUG	PHYS. DEF.	RES.	RACE	SEX	INJ.	S. EQUIP.	EJECT.
	WAS HAZARDOUS MATERIAL BEING TRANSPORTED	PLACARDED	IF YES, INDICATE NAME OR FOUR DIGIT NUMBER FROM DIAMOND OR BOX ON PLACARD, AND 1 DIGIT NUMBER FROM BOTTOM OF DIAMOND			WAS HAZARDOUS MATERIAL SPILLED?	RECOMMEND DRIVER RE-EXAM, IF YES EXPLAIN IN NARRATIVE	DRIVER'S PHONE NO.						

Code Information	VEHICLE TYPE	VEHICLE USE	TRAILER TYPE	RESIDENCE (Driver / Ped.)	PHYSICAL DEFECTS	ALCOHOL / DRUG USE	LOCATION IN VEHICLE
01	Automobile	Private Transportation	Single Semi Trailer	1 County of Crash	1 No Defects Known	1 Not Drinking or Using Drugs	1 Front Left
02	Van	Commercial Passengers	Tandem Semi Trailer	2 Elsewhere in State	2 Eyesight Defect	2 Alcohol - Under Influence	2 Front Center
03	Light Truck / P.U. - 2 or 4 rear tires	Commercial Cargo	Tank Trailer	3 Non-Resident Out of State	3 Fatigue / Asleep	3 Drugs - Under Influence	3 Front Right
04	Medium Truck - 4 rear tires	Public Transportation	Saddle Mount / Flatbed	4 Foreign 5 Unknown	4 Hearing Defect	4 Alcohol & Drugs - Under Influence	4 Rear Left
05	Heavy Truck - 2 or more rear axles	Public School Bus	Boat Trailer	DL TYPE	5 Illness	5 Had Been Drinking	5 Rear Center
06	Tractor (Cab-Boat)	Private School Bus	Utility Trailer	1 A 2 B 3 C	6 Seizure, Epilepsy, Blackout	6 Pending ALC/DRUG Test Results	6 Rear Right
07	Motor Home (RV)	Ambulance	House Trailer	1 White	7 Other Physical Defect	1 Not In use	7 In Body Of Truck
08	Bus (driver + seats for 9-15)	Law Enforcement	Pole Trailer	2 Black	INJURY SEVERITY	2 Seat Belt / Shoulder Harness	8 Bus Passenger
09	Bus (driver + seats for over 15)	Fire / Rescue	Towed Vehicle	3 Hispanic	1 None	3 Child Restraint	9 Other
10	Bicycle	Military	Auto Transport	4 Other	2 Possible	4 Air Bag - Deployed	EJECTED
11	Motorcycle	Other Government	Other	5 E/ Oper.-Rest.	3 Non-Incapacitating	5 Air Bag - Not Deployed	1 No
12	Moped	Dump		7 None	4 Incapacitating	6 Safety Helmet	2 Yes
13	All Terrain Vehicle	Concrete Mixer		REQUIRED ENDORSEMENTS	5 Fatal (Within 30 Days)	7 Eye Protection	3 Partial
14	Train	Garbage or Refuse		1 Yes	6 Non-Traffic Fatality		
15	Low Speed Vehicle	Cargo Van		2 No			
77	Other	Other		3 No Endorsement Required			

DRIVER ACTION	1. Phantom <input type="checkbox"/>	YEAR	MAKE	TYPE	USE	VEH. LICENSE NUMBER	STATE	VEHICLE IDENTIFICATION NUMBER	
	2. Hit & Run <input type="checkbox"/>								
TRAILER OR TOWED VEHICLE INFORMATION				TRAILER TYPE					SHOW FIRST POINT OF VEHICLE DAMAGE AND CIRCLE DAMAGED AREA(S)

Vehicle	VEHICLE TRAVELLING	ON	AT	Est. MPH	Posted Speed	EST. VEHICLE DAMAGE	1. Disabling <input type="checkbox"/>	EST. TRAILER DAMAGE	3. Driver <input type="checkbox"/>
	N S E W						2. Functional <input type="checkbox"/>		4. Other <input type="checkbox"/>
Pedestrian	MOTOR VEHICLE INSURANCE COMPANY (LIABILITY OR PIP)		POLICY NUMBER		VEHICLE REMOVED BY:		1. Tow Rotation List		
	NAME OF VEHICLE OWNER (Check Box If Same As Driver) <input type="checkbox"/>		CURRENT ADDRESS (Number and Street)		CITY AND STATE		2. Tow Owner's Request		

# 1	PROPERTY DAMAGED - OTHER THAN VEHICLES	EST. AMOUNT	OWNER'S NAME	ADDRESS	CITY	STATE	ZIP
		\$					
# 2	PROPERTY DAMAGED - OTHER THAN VEHICLES	EST. AMOUNT	OWNER'S NAME	ADDRESS	CITY	STATE	ZIP
		\$					

CONTRIBUTING CAUSES - DRIVER / PEDESTRIAN 01 No Improper Driving / Action <input type="checkbox"/> <input type="checkbox"/> <input type="checkbox"/> 02 Careless Driving (Explain in Narrative) <input type="checkbox"/> <input type="checkbox"/> <input type="checkbox"/> 03 Failed To Yield Right - of - Way <input type="checkbox"/> <input type="checkbox"/> <input type="checkbox"/> 04 Improper Backing <input type="checkbox"/> <input type="checkbox"/> <input type="checkbox"/> 05 Improper Lane Change <input type="checkbox"/> <input type="checkbox"/> <input type="checkbox"/> 06 Improper Turn <input type="checkbox"/> <input type="checkbox"/> <input type="checkbox"/> 07 Alcohol - Under Influence <input type="checkbox"/> <input type="checkbox"/> <input type="checkbox"/> 08 Drugs - Under Influence <input type="checkbox"/> <input type="checkbox"/> <input type="checkbox"/> 09 Alcohol & Drugs - Under Influence <input type="checkbox"/> <input type="checkbox"/> <input type="checkbox"/> 10 Followed Too Closely <input type="checkbox"/> <input type="checkbox"/> <input type="checkbox"/> 11 Disregarded Traffic Signal <input type="checkbox"/> <input type="checkbox"/> <input type="checkbox"/> 12 Exceeded Safe Speed Limit <input type="checkbox"/> <input type="checkbox"/> <input type="checkbox"/> 13 Disregarded Stop Sign <input type="checkbox"/> <input type="checkbox"/> <input type="checkbox"/> 14 Failed To Maintain Equip. / Vehicle <input type="checkbox"/> <input type="checkbox"/> <input type="checkbox"/> 15 Improper Passing <input type="checkbox"/> <input type="checkbox"/> <input type="checkbox"/> 16 Drove Left of Center <input type="checkbox"/> <input type="checkbox"/> <input type="checkbox"/> 17 Exceeded Stated Speed Limit <input type="checkbox"/> <input type="checkbox"/> <input type="checkbox"/> 18 Obstructing Traffic <input type="checkbox"/> <input type="checkbox"/> <input type="checkbox"/>			VEHICLE DEFECT 01 No Defects <input type="checkbox"/> <input type="checkbox"/> <input type="checkbox"/> 02 Def. Brakes <input type="checkbox"/> <input type="checkbox"/> <input type="checkbox"/> 03 Worn / Smooth Tires <input type="checkbox"/> <input type="checkbox"/> <input type="checkbox"/> 04 Defective / Improper Lights <input type="checkbox"/> <input type="checkbox"/> <input type="checkbox"/> 05 Puncture / Blowout <input type="checkbox"/> <input type="checkbox"/> <input type="checkbox"/> 06 Steering Mech. <input type="checkbox"/> <input type="checkbox"/> <input type="checkbox"/> 07 Windshield Wipers <input type="checkbox"/> <input type="checkbox"/> <input type="checkbox"/> 08 Equipment / Vehicle Defect <input type="checkbox"/> <input type="checkbox"/> <input type="checkbox"/> 77 All Other (Explain in Narrative) <input type="checkbox"/> <input type="checkbox"/> <input type="checkbox"/>			VEHICLE MOVEMENT 01 Straight Ahead <input type="checkbox"/> <input type="checkbox"/> <input type="checkbox"/> 02 Slowing / Stopped / Stalled <input type="checkbox"/> <input type="checkbox"/> <input type="checkbox"/> 03 Making Left Turn <input type="checkbox"/> <input type="checkbox"/> <input type="checkbox"/> 04 Backing <input type="checkbox"/> <input type="checkbox"/> <input type="checkbox"/> 05 Making Right Turn <input type="checkbox"/> <input type="checkbox"/> <input type="checkbox"/> 06 Changing Lanes <input type="checkbox"/> <input type="checkbox"/> <input type="checkbox"/> 07 Entering / Leaving / Parking Space <input type="checkbox"/> <input type="checkbox"/> <input type="checkbox"/> 08 Properly Parked <input type="checkbox"/> <input type="checkbox"/> <input type="checkbox"/> 09 Improperly Parked <input type="checkbox"/> <input type="checkbox"/> <input type="checkbox"/> 10 Making U-Turn <input type="checkbox"/> <input type="checkbox"/> <input type="checkbox"/>			VEHICLE SPECIAL FUNCTIONS 1 None <input type="checkbox"/> <input type="checkbox"/> <input type="checkbox"/> 2 Farm <input type="checkbox"/> <input type="checkbox"/> <input type="checkbox"/> 3 Police Pursuit <input type="checkbox"/> <input type="checkbox"/> <input type="checkbox"/> 4 Recreational <input type="checkbox"/> <input type="checkbox"/> <input type="checkbox"/> 5 Emergency Operation <input type="checkbox"/> <input type="checkbox"/> <input type="checkbox"/> 6 Construction / Maintenance <input type="checkbox"/> <input type="checkbox"/> <input type="checkbox"/>					
POINT OF COLLISION 01 On Road <input type="checkbox"/> <input type="checkbox"/> <input type="checkbox"/> 02 Not On Road <input type="checkbox"/> <input type="checkbox"/> <input type="checkbox"/> 03 Shoulder <input type="checkbox"/> <input type="checkbox"/> <input type="checkbox"/> 04 Median <input type="checkbox"/> <input type="checkbox"/> <input type="checkbox"/> 05 Turn Lane <input type="checkbox"/> <input type="checkbox"/> <input type="checkbox"/>			WORK AREA 01 None <input type="checkbox"/> <input type="checkbox"/> <input type="checkbox"/> 02 Nearby <input type="checkbox"/> <input type="checkbox"/> <input type="checkbox"/> 03 Entered <input type="checkbox"/> <input type="checkbox"/> <input type="checkbox"/>			PEDESTRIAN ACTION 01 Crossing Not at Intersection <input type="checkbox"/> <input type="checkbox"/> <input type="checkbox"/> 02 Crossing at Mid-block Crosswalk <input type="checkbox"/> <input type="checkbox"/> <input type="checkbox"/> 03 Crossing at Intersection <input type="checkbox"/> <input type="checkbox"/> <input type="checkbox"/> 04 Walking Along Road With Traffic <input type="checkbox"/> <input type="checkbox"/> <input type="checkbox"/> 05 Walking Along Road Against Traffic <input type="checkbox"/> <input type="checkbox"/> <input type="checkbox"/> 06 Working on Vehicle In Road <input type="checkbox"/> <input type="checkbox"/> <input type="checkbox"/>			SOURCE OF CARRIER INFORMATION 1 Not Applicable <input type="checkbox"/> <input type="checkbox"/> <input type="checkbox"/> 2 Shipping Papers <input type="checkbox"/> <input type="checkbox"/> <input type="checkbox"/> 3 Vehicle Side <input type="checkbox"/> <input type="checkbox"/> <input type="checkbox"/> 4 Driver <input type="checkbox"/> <input type="checkbox"/> <input type="checkbox"/> 5 Other <input type="checkbox"/> <input type="checkbox"/> <input type="checkbox"/>					
FIRST / SUBSEQUENT HARMFUL EVENT(S) 01 Collision With MV in Transport(Rear End) <input type="checkbox"/> <input type="checkbox"/> <input type="checkbox"/> 02 Collision With MV in Transport(Head On) <input type="checkbox"/> <input type="checkbox"/> <input type="checkbox"/> 03 Collision With MV in Transport(Angle) <input type="checkbox"/> <input type="checkbox"/> <input type="checkbox"/> 04 Collision With MV in Transport(Left Turn) <input type="checkbox"/> <input type="checkbox"/> <input type="checkbox"/> 05 Collision With MV in Transport(Right Turn) <input type="checkbox"/> <input type="checkbox"/> <input type="checkbox"/> 06 Collision With MV in Transport(Sideswipe) <input type="checkbox"/> <input type="checkbox"/> <input type="checkbox"/> 07 Collision With MV in Transport(Backed Into) <input type="checkbox"/> <input type="checkbox"/> <input type="checkbox"/> 08 Collision With Parked Car <input type="checkbox"/> <input type="checkbox"/> <input type="checkbox"/> 09 Collision With MV on Roadway <input type="checkbox"/> <input type="checkbox"/> <input type="checkbox"/> 10 Collision With Pedestrian <input type="checkbox"/> <input type="checkbox"/> <input type="checkbox"/> 11 Collision With Bicycle <input type="checkbox"/> <input type="checkbox"/> <input type="checkbox"/> 12 Collision With Bicycle (Bike Lane) <input type="checkbox"/> <input type="checkbox"/> <input type="checkbox"/> 13 Collision With Moped <input type="checkbox"/> <input type="checkbox"/> <input type="checkbox"/> 14 Collision With Train <input type="checkbox"/> <input type="checkbox"/> <input type="checkbox"/>			15 Collision With Animal <input type="checkbox"/> <input type="checkbox"/> <input type="checkbox"/> 16 MV Hit Sign / Sign Post <input type="checkbox"/> <input type="checkbox"/> <input type="checkbox"/> 17 MV Hit Utility Pole / Light Pole <input type="checkbox"/> <input type="checkbox"/> <input type="checkbox"/> 18 MV Hit Guardrail <input type="checkbox"/> <input type="checkbox"/> <input type="checkbox"/> 19 MV Hit Fence <input type="checkbox"/> <input type="checkbox"/> <input type="checkbox"/> 20 MV Hit Concrete Barrier Wall <input type="checkbox"/> <input type="checkbox"/> <input type="checkbox"/> 21 MV Hit Bridge/Pier/Abutment/Rail <input type="checkbox"/> <input type="checkbox"/> <input type="checkbox"/> 22 MV Hit Tree /Shrubbery <input type="checkbox"/> <input type="checkbox"/> <input type="checkbox"/> 23 Collision With Construction Barricade Sign <input type="checkbox"/> <input type="checkbox"/> <input type="checkbox"/> 24 Collision With Traffic Gate <input type="checkbox"/> <input type="checkbox"/> <input type="checkbox"/> 25 Collision With Crash Attenuators <input type="checkbox"/> <input type="checkbox"/> <input type="checkbox"/> 26 Collision With Fixed Object Above Road <input type="checkbox"/> <input type="checkbox"/> <input type="checkbox"/> 27 MV Hit Other Fixed Object <input type="checkbox"/> <input type="checkbox"/> <input type="checkbox"/> 28 Collision With Moveable Object On Road <input type="checkbox"/> <input type="checkbox"/> <input type="checkbox"/>			ROAD SYSTEM IDENTIFIER 01 Interstate <input type="checkbox"/> <input type="checkbox"/> <input type="checkbox"/> 02 U.S. <input type="checkbox"/> <input type="checkbox"/> <input type="checkbox"/> 03 State <input type="checkbox"/> <input type="checkbox"/> <input type="checkbox"/> 04 County <input type="checkbox"/> <input type="checkbox"/> <input type="checkbox"/> 05 Local <input type="checkbox"/> <input type="checkbox"/> <input type="checkbox"/> 06 Turnpike / Toll <input type="checkbox"/> <input type="checkbox"/> <input type="checkbox"/> 07 Forest Road <input type="checkbox"/> <input type="checkbox"/> <input type="checkbox"/> 08 Private Roadway <input type="checkbox"/> <input type="checkbox"/> <input type="checkbox"/> 09 In Road <input type="checkbox"/> <input type="checkbox"/> <input type="checkbox"/> 10 Standing/Playing <input type="checkbox"/> <input type="checkbox"/> <input type="checkbox"/> 11 In Road <input type="checkbox"/> <input type="checkbox"/> <input type="checkbox"/> 12 Driverless or Runaway Vehicle <input type="checkbox"/> <input type="checkbox"/> <input type="checkbox"/> 13 All Other (Explain in Narrative) <input type="checkbox"/> <input type="checkbox"/> <input type="checkbox"/>			LIGHTING CONDITION 01 Daylight <input type="checkbox"/> <input type="checkbox"/> <input type="checkbox"/> 02 Dusk <input type="checkbox"/> <input type="checkbox"/> <input type="checkbox"/> 03 Dawn <input type="checkbox"/> <input type="checkbox"/> <input type="checkbox"/> 04 Dark (Street Light) <input type="checkbox"/> <input type="checkbox"/> <input type="checkbox"/> 05 Dark (No Street Light) <input type="checkbox"/> <input type="checkbox"/> <input type="checkbox"/> 06 Unknown <input type="checkbox"/> <input type="checkbox"/> <input type="checkbox"/>					
ROAD CONDITIONS AT TIME OF CRASH 01 No Defects <input type="checkbox"/> <input type="checkbox"/> <input type="checkbox"/> 02 Obstruction With Warning <input type="checkbox"/> <input type="checkbox"/> <input type="checkbox"/> 03 Obstruction Without Warning <input type="checkbox"/> <input type="checkbox"/> <input type="checkbox"/> 04 Road Under Repair / Construction <input type="checkbox"/> <input type="checkbox"/> <input type="checkbox"/> 05 Loose Surface Materials <input type="checkbox"/> <input type="checkbox"/> <input type="checkbox"/> 06 Shoulders - Soft / Low / High <input type="checkbox"/> <input type="checkbox"/> <input type="checkbox"/> 07 Holes / Ruts / Unsafe Paved Edge <input type="checkbox"/> <input type="checkbox"/> <input type="checkbox"/> 08 Standing Water <input type="checkbox"/> <input type="checkbox"/> <input type="checkbox"/> 09 Worn / Polished Road Surface <input type="checkbox"/> <input type="checkbox"/> <input type="checkbox"/> 77 All Other (Explain in Narrative) <input type="checkbox"/> <input type="checkbox"/> <input type="checkbox"/>			VISION OBSTRUCTED 01 Vision Not Obscured <input type="checkbox"/> <input type="checkbox"/> <input type="checkbox"/> 02 Inclement Weather <input type="checkbox"/> <input type="checkbox"/> <input type="checkbox"/> 03 Parked / Stopped Vehicle <input type="checkbox"/> <input type="checkbox"/> <input type="checkbox"/> 04 Trees / Crops / Bushes <input type="checkbox"/> <input type="checkbox"/> <input type="checkbox"/> 05 Load On Vehicle <input type="checkbox"/> <input type="checkbox"/> <input type="checkbox"/> 06 Building / Fixed Object <input type="checkbox"/> <input type="checkbox"/> <input type="checkbox"/> 07 Signs / Billboards <input type="checkbox"/> <input type="checkbox"/> <input type="checkbox"/> 08 Fog <input type="checkbox"/> <input type="checkbox"/> <input type="checkbox"/> 09 Smoke <input type="checkbox"/> <input type="checkbox"/> <input type="checkbox"/> 10 Glare <input type="checkbox"/> <input type="checkbox"/> <input type="checkbox"/>			TRAFFIC CONTROL 01 No Control <input type="checkbox"/> <input type="checkbox"/> <input type="checkbox"/> 02 Special Speed Zone <input type="checkbox"/> <input type="checkbox"/> <input type="checkbox"/> 03 Speed Control Sign <input type="checkbox"/> <input type="checkbox"/> <input type="checkbox"/> 04 School Zone <input type="checkbox"/> <input type="checkbox"/> <input type="checkbox"/> 05 Traffic Signal <input type="checkbox"/> <input type="checkbox"/> <input type="checkbox"/> 06 Stop Sign <input type="checkbox"/> <input type="checkbox"/> <input type="checkbox"/> 07 Yield Sign <input type="checkbox"/> <input type="checkbox"/> <input type="checkbox"/> 08 Flashing Light <input type="checkbox"/> <input type="checkbox"/> <input type="checkbox"/> 09 Railroad Signal <input type="checkbox"/> <input type="checkbox"/> <input type="checkbox"/> 10 Officer / Guard / Flagperson <input type="checkbox"/> <input type="checkbox"/> <input type="checkbox"/>			SITE LOCATION 01 Not At Intersection / RR X-ing / Bridge <input type="checkbox"/> <input type="checkbox"/> <input type="checkbox"/> 02 At Intersection <input type="checkbox"/> <input type="checkbox"/> <input type="checkbox"/> 03 Influenced By Intersection <input type="checkbox"/> <input type="checkbox"/> <input type="checkbox"/> 04 Driveway Access <input type="checkbox"/> <input type="checkbox"/> <input type="checkbox"/> 05 Railroad <input type="checkbox"/> <input type="checkbox"/> <input type="checkbox"/> 06 Bridge <input type="checkbox"/> <input type="checkbox"/> <input type="checkbox"/> 07 Entrance Ramp <input type="checkbox"/> <input type="checkbox"/> <input type="checkbox"/> 08 Exit Ramp <input type="checkbox"/> <input type="checkbox"/> <input type="checkbox"/> 09 Parking Lot - Public <input type="checkbox"/> <input type="checkbox"/> <input type="checkbox"/> 10 Parking Lot - Private <input type="checkbox"/> <input type="checkbox"/> <input type="checkbox"/>			TRAFFICWAY CHARACTER 01. Straight - Level <input type="checkbox"/> <input type="checkbox"/> <input type="checkbox"/> 02. Straight - Upgrade / Downgrade <input type="checkbox"/> <input type="checkbox"/> <input type="checkbox"/> 03. Curve - Level <input type="checkbox"/> <input type="checkbox"/> <input type="checkbox"/> 04. Curve - Upgrade / Downgrade <input type="checkbox"/> <input type="checkbox"/> <input type="checkbox"/> TYPE SHOULDER 01. Paved <input type="checkbox"/> <input type="checkbox"/> <input type="checkbox"/> 02. Unpaved <input type="checkbox"/> <input type="checkbox"/> <input type="checkbox"/> 03. Curb <input type="checkbox"/> <input type="checkbox"/> <input type="checkbox"/>		

Violator(s)	SECTION #	NAME OF VIOLATOR	FL STATUTE NUMBER	CHARGE	CITATION NUMBER
	SECTION #	NAME OF VIOLATOR	FL STATUTE NUMBER	CHARGE	CITATION NUMBER
	SECTION #	NAME OF VIOLATOR	FL STATUTE NUMBER	CHARGE	CITATION NUMBER
	SECTION #	NAME OF VIOLATOR	FL STATUTE NUMBER	CHARGE	CITATION NUMBER

FLORIDA TRAFFIC CRASH REPORT NARRATIVE/DIAGRAM

MAIL TO: DEPARTMENT OF HIGHWAY SAFETY & MOTOR VEHICLES, TRAFFIC CRASH
RECORDS SECTION, NEIL KIRKMAN BUILDING, TALLAHASSEE, FL 32399-0500

DO NOT WRITE IN THIS SPACE

TIME EMS NOTIFIED (FATALITIES ONLY) <input type="checkbox"/> AM <input type="checkbox"/> PM	TIME EMS ARRIVED (FATALITIES ONLY) <input type="checkbox"/> AM <input type="checkbox"/> PM	DATE OF CRASH	COUNTY / CITY CODE	INVEST. AGENCY REPORT NUMBER	HSMV CRASH REPORT NUMBER
--	---	---------------	--------------------	------------------------------	--------------------------

(NARRATIVE)

SEC#	PASS#	PASSENGER'S NAME	CURRENT ADDRESS	CITY & STATE	ZIP CODE	DATE OF BIRTH	RACE	SEX	LOC	INJ	S. EQUIP.	EJECT.

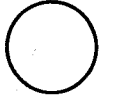
Violator(s)	SECTION #	NAME OF VIOLATOR	FL STATUTE NUMBER	CHARGE	CITATION NUMBER
	SECTION #	NAME OF VIOLATOR	FL STATUTE NUMBER	CHARGE	CITATION NUMBER

WITNESS NAME (1)	CURRENT ADDRESS	CITY & STATE	ZIP CODE	WITNESS NAME (2)	CURRENT ADDRESS	CITY & STATE	ZIP CODE
------------------	-----------------	--------------	----------	------------------	-----------------	--------------	----------

FIRST AID GIVEN BY - NAME	1. Physician or Nurse 2. Paramedic or EMT 3. Police Officer 4. Certified 1st Aider 5. Other	INJURED TAKEN TO:	BY - NAME
---------------------------	--	-------------------	-----------

WAS INVESTIGATION MADE AT SCENE? 1. YES <input type="checkbox"/> 2. NO <input type="checkbox"/>	IF NO, THEN WHERE?	IS INVESTIGATION COMPLETE? 1. YES <input type="checkbox"/> 2. NO <input type="checkbox"/>	IF NO, THEN WHY?	DATE OF REPORT	PHOTOS TAKEN 1. YES <input type="checkbox"/> 2. NO <input type="checkbox"/>	IF YES, BY WHOM? 1. INVESTIGATING AGENCY <input type="checkbox"/> 2. OTHER
INVESTIGATOR - RANK & SIGNATURE			ID/BADGE NUMBER	DEPARTMENT		FHP <input type="checkbox"/> SO <input type="checkbox"/> PD <input type="checkbox"/> OTHER <input type="checkbox"/>

DIAGRAM



INDICATE NORTH
WITH ARROW