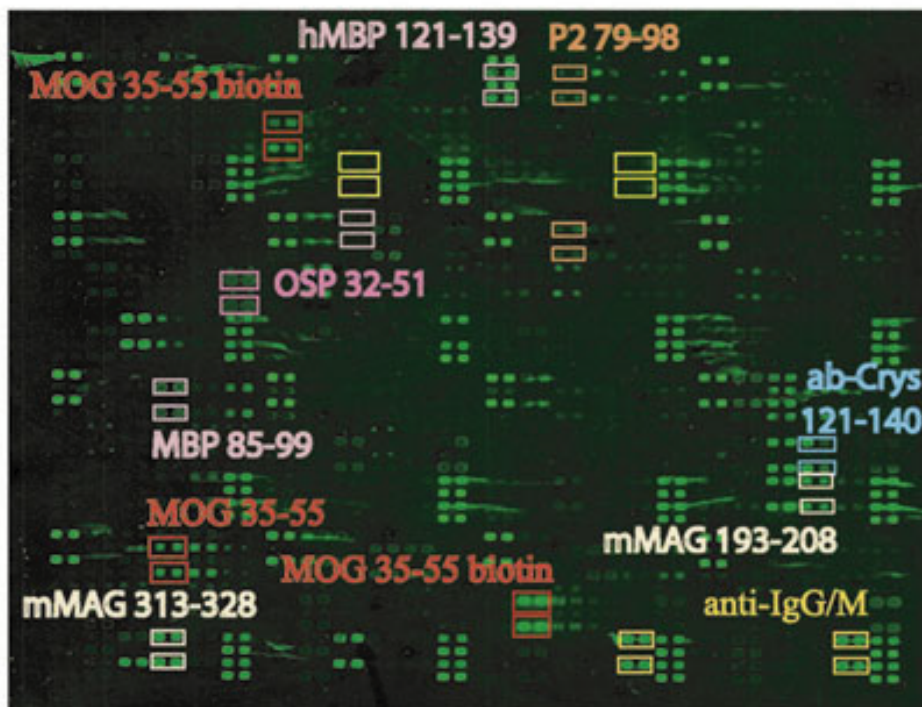


A



B

Supplementary Figure 1 Myelin arrays demonstrate autoantibody reactivity against MAG epitopes in EAE. Myelin arrays were probed with sera from an SJL mouse induced to develop EAE with PLP₁₃₉₋₁₅₁ (a) and healthy SJL control (b) sera. Reactive antigen features are highlighted.