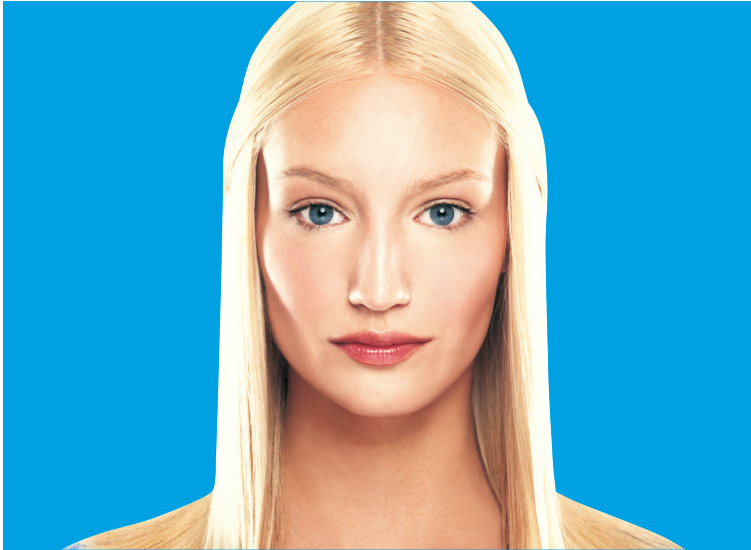




STAR NAIL®
international

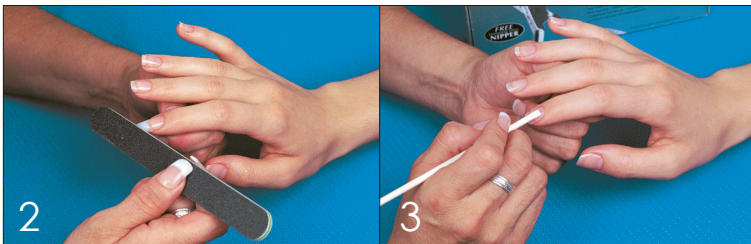
so fine acrylic dipping powder instructions



APPLICATION INSTRUCTIONS

1. Sanitize Hands - Have client scrub hands with Star Nail pH balanced Sani Scrub, dry thoroughly.

2. Prepare nails - Using a natural nail stone or new 180 grit zebra file or white block, remove the shine from the natural nail. Be sure to buff the entire nail plate, paying special attention to the nail grooves and cuticle area. This step is very important to ensure proper application.



3. Using a birchwood stick, plastic pusher or metal spoon pusher; gently push back cuticles and remove excess debris from the nail plate. Sanitize nails with Star Sani Spray antiseptic, spray the nail plate and wipe immediately with a lint-free pad to remove any remaining dust, debris and oil. Sani Spray will also serve to dehydrate and sanitize the nail. ***Note: If applying So Fine Dip System to natural nails (no tips) - go to step 6.**

4. Trim and shape the natural nails. Select a Star Nail tip style and size the best matches to the shape of the natural nail. A properly sized tip should cover no more than 1/3 of the nail bed and extend across the width of the nail from nail groove to nail groove without contacting the skin. Prepare tip as required to ensure a secure fit.

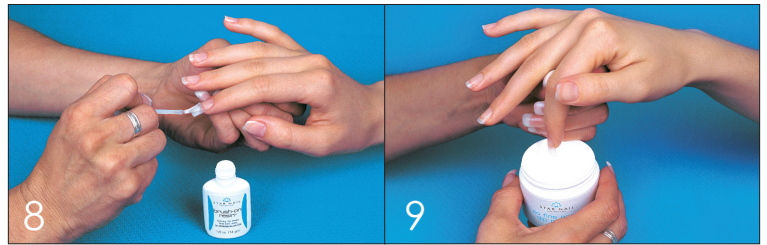


5. To adhere tip, apply a small amount of Star Nail Resin to the tip "well" area. Holding prepared tip at a 45 degree angle, press tip "well" section to the nail free edge. While applying pressure, rock the tip onto the natural nail to push out excess glue and air. Blend the tip to the natural nail and remove tip shine. Use Star Nail Tip Clipper to cut nail tips to desired length.

6. Brush on a coat of Brush On Resin over the nail and tip, staying 1/16" of an inch away from the sidewall and cuticle area.

7. Have client dip their nail into the So Fine Acrylic Dip powder and tap off the excess. (note: when your client is dipping into the powder; help guide them by having the client bend at the knuckle and gently enter the powder or gently roll her nail in it.)

8. Using the belly of the brush-on resin, dot the resin onto your first application of powder (do not use a stroking motion like you were polishing a nail) until powder is clear. Have the client dip the nail into the So Fine Acrylic Dip Powder and tap off the excess powder.



9. Repeat Step 8. You will now have 3 coats applied to the nails. Then using belly of the brush-on resin brush, dot the brush-on resin onto the powder and activate with Star Nail Gel Cure.

10. Finishing coat. Apply a coat of Brush-on resin (just as if you were polishing a nail) and activate with Star Nail Gel Cure. Wait 5 seconds and repeat. This will insure a smooth surface to the nail and less filing time.



11. (Optional): If you are concerned about cross-contamination, do not dip the finger into the powder. You can take a plastic eyedropper and draw the powder into the dropper and gently disperse over the nail every time the directions say to dip.

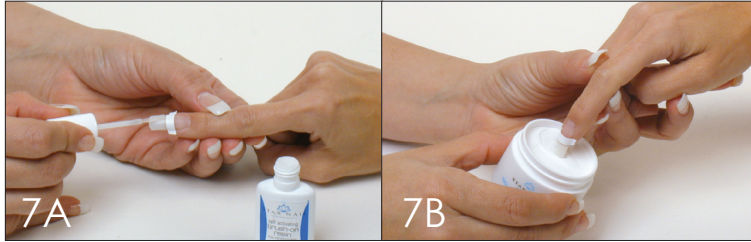
SO FINE PINK & WHITE SYSTEM

Follow the main instructions through step 5 then begin the following steps 6 through 9.



6. Apply So Fine Perfect Curve forms above the free edge as shown. Place forms on the nail to create the perfect "smile line". The bottom of the form should lay across the smile line.

7. White - First coat: Apply Brush-on Resin to the free edge; overlapping the form slightly. Dip into the White So Fine Powder and tap off the excess powder. White - Second coat: Dot the resin on, using the belly of the brush (do not brush as if you were polishing) then dip into the White So Fine Powder tap off the excess powder. Remove form. Third coat: no powder. Dot the resin on the free edge and activate with Star Nail Gel Cure.

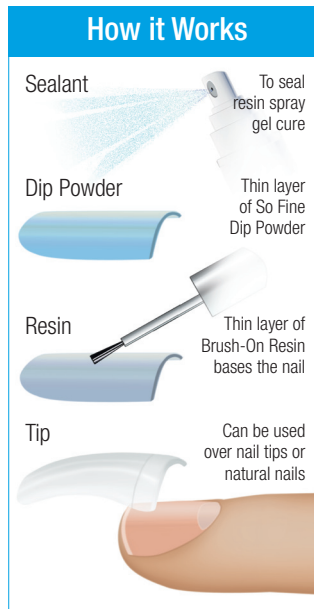


8. Pink - First coat: Turn the form around to cover the white tip area (or use a new form) and apply Brush-On Resin to the nail bed area overlapping the form slightly. Dip into the Pink So Fine Powder and tap off the excess powder. Pink: second coat: Dot the resin on the nail bed, using the belly of the brush and then dip into the Pink So Fine Powder tap off the excess powder. Remove form. Third coat: no Powder. Dot the resin on the nail bed and activate with Star Nail Gel Cure.



9. Finishing Coat: file the nail using 180-grit file to a smooth surface. Apply Brush-On Resin to the entire nail and dip into Clear So Fine Powder tap off the excess powder. Dot the resin on the entire nail and activate with Star Nail Gel Cure.

Brush the Brush-On Resin on the entire nail and activate with Star Nail Gel Cure. ***Optional application using pink and white So Fine Powder only: Follow step 7 adding 1 more coat of white So Fine Powder. Follow step 8 adding 1 more coat of pink So Fine Powder. Omit step 9. Finishing: Using 180-grit file and a white block file nail to a smooth surface.**



FINISHING

1. Using a 180 grit file or white block; shape the left and right side of the nail groove and the free edge of each nail. Finish by buffing to a shine with a tri-sided buffer or tri-sided buffer block. Use the white side first, grey second and dark grey last to bring up to a high gloss shine.

2. Finish by liberally applying cuticle oil to nails and cuticle. Massage the oil into the cuticles.

MAINTENANCE

Maintenance should be done when nails are cracked, chipped or grown out. So Fine nails should be maintained every 2-4 weeks.

1. Prepare nails for maintenance by sanitizing hands with pH balanced Sani Scrub. Remove polish and push back cuticles to fully expose new growth area. Lightly buff new nail growth area with a white block or 180 grit zebra file. Check the sides of the nail for loose product and file away with a coarse 100 or 180 grit file.

2. If any lifting has occurred anywhere on the nail, file the lifted product away and continue blending until you have reached firmly attached material.



3. On the two week fill, it is not necessary to dip into the powder. A fill-in can be performed by simply applying the Brush On Resin and activating with Gel cure and repeating this sequence until the desired thickness is achieved.

4. On the four week fill, perform steps 1 and 2. Then apply Brush On Resin to the new growth and nail; dip into the So Fine Acrylic Dipping powder. Spray with Gel Cure. Repeat. Finish as in main instructions.

REMOVAL

1. Place Acetone or Miracle Soak Off, in a glass bowl. Place marbles in the bowl to give your client something to do. Add a few drops of oil to help moisturize the skin.

2. Trim or file excess artificial nail length. With a coarse 80 or 100 grit file, roughen the surface of the nail while removing excess thickness. The less product there is to soak off, the faster the removal process. Always be careful not to file into the natural nail.

3. Have your client immerse her finger or fingertips into the bowl and cover with a terry cloth towel. DO NOT lift the nails out of the liquid to look at them during soaking as any re-exposure to the air will allow the product to begin hardening again. After 10 minutes, remove the towel and gently scrape at the nail surface with a manicure stick while the nails are still under the surface of the soaking agent. Keep the fingers in the removal solution until all of the remaining residue is dissolved and can be wiped from the nail with a paper towel. ***Tech Tip: If the soaking agent is warmed, it will reduce the amount of time required to dissolve the acrylic product. To gently warm the soaking solution, a heating pad can be placed under the soaking bowl. Alternatively, the soaking bowl can be placed within a second bowl of hot water creating a double boiler effect. NEVER attempt to heat any chemical in the microwave or on the stove.**

PRECAUTIONS

StarNail products were developed for use by professionals; a knowledge of their proper use is expected. Refer to application instructions and warning labels on each product. Store all chemicals tightly capped in their original containers and away from heat, humidity or direct sunlight. Keep out of reach of children at all times.

