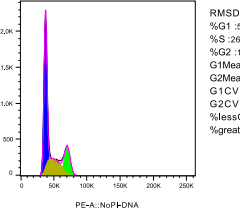
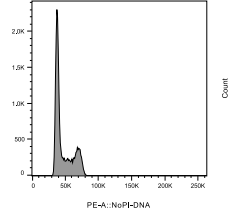
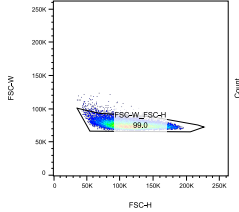
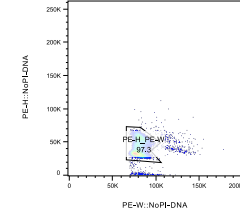
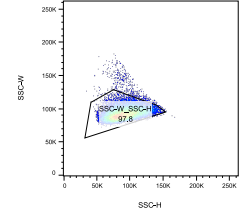
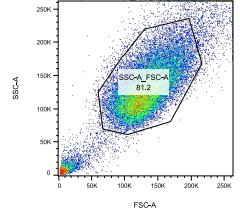
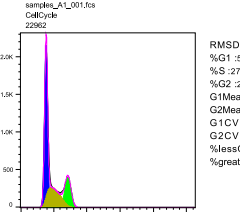
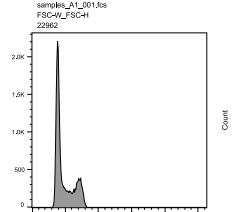
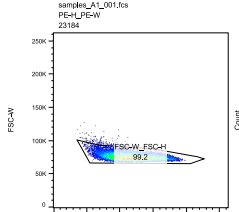
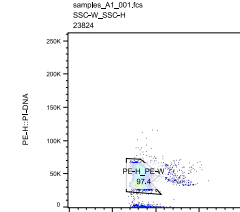
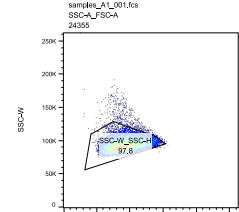
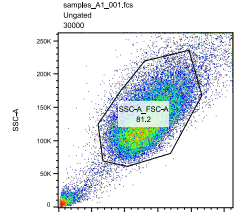


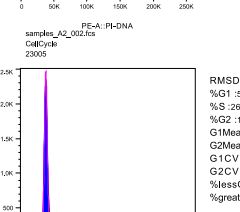
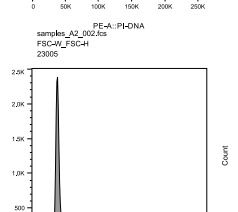
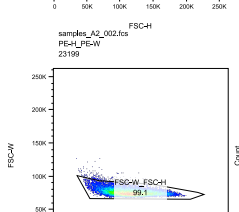
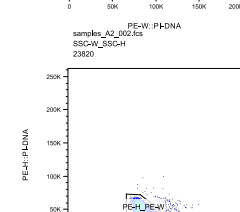
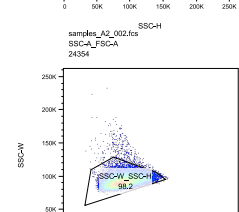
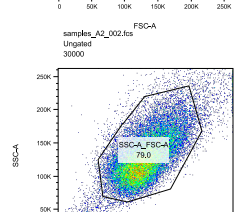
DIPG4_NS_No Dox



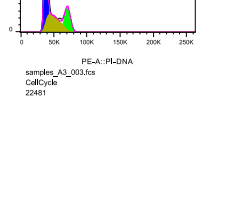
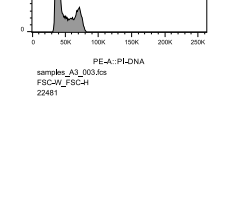
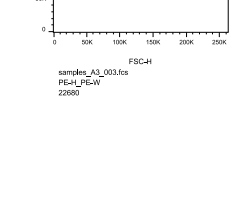
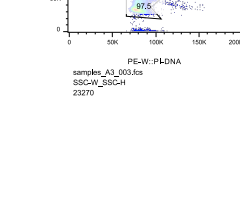
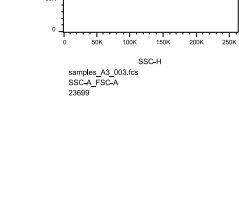
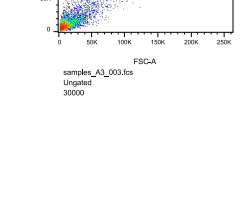
RMSD:4.69
%G1 :55.0
%S :26.5
%G2 :19.0
G1Mean :38091
G2Mean :70609
G1CV:3.20
G2CV:8.75
%lessG1 :-1.60
%greaterG2 :-0.67



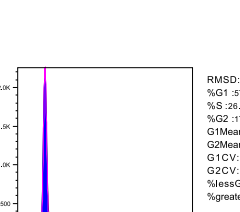
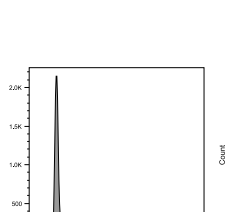
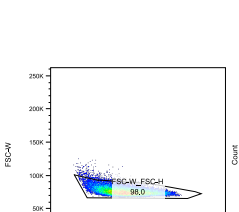
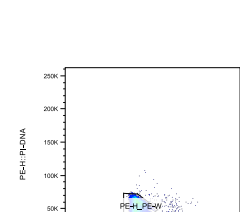
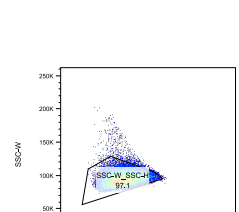
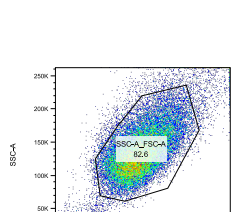
RMSD:4.60
%G1 :53.0
%S :27.4
%G2 :20.2
G1Mean :38914
G2Mean :71716
G1CV:8.13
G2CV:9.94
%lessG1 :-1.81
%greaterG2 :-0.58



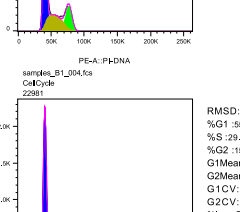
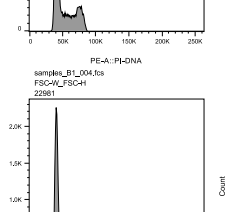
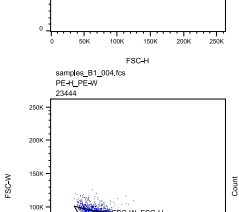
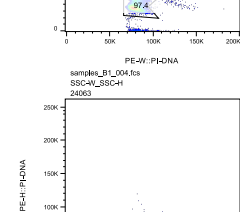
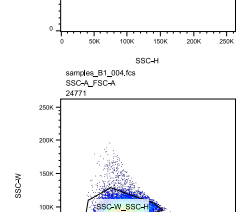
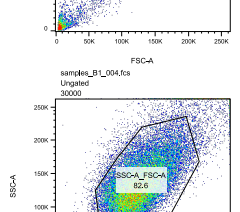
RMSD:4.69
%G1 :56.6
%S :26.7
%G2 :17.3
G1Mean :38400
G2Mean :71017
G1CV:7.86
G2CV:8.75
%lessG1 :-1.73
%greaterG2 :-0.54



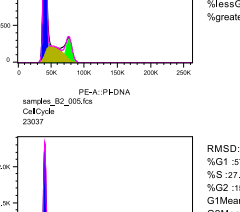
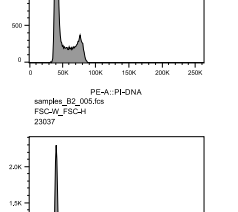
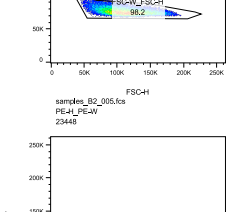
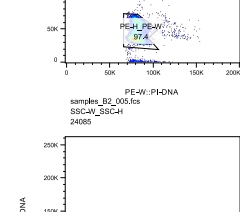
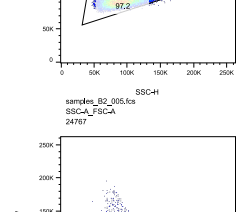
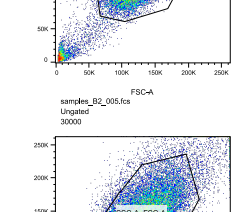
RMSD:4.69
%G1 :56.6
%S :26.7
%G2 :17.3
G1Mean :38400
G2Mean :71017
G1CV:7.86
G2CV:8.75
%lessG1 :-1.73
%greaterG2 :-0.54



RMSD:3.94
%G1 :57.3
%S :26.2
%G2 :17.0
G1Mean :41337
G2Mean :77110
G1CV:8.04
G2CV:8.60
%lessG1 :-1.16
%greaterG2 :-0.85



RMSD:4.48
%G1 :55.9
%S :29.1
%G2 :15.5
G1Mean :41160
G2Mean :77380
G1CV:7.91
G2CV:8.06
%lessG1 :-1.50
%greaterG2 :-0.94



RMSD:4.41
%G1 :57.1
%S :27.5
%G2 :15.9
G1Mean :41022
G2Mean :77111
G1CV:7.82
G2CV:8.13
%lessG1 :-1.38
%greaterG2 :-0.83

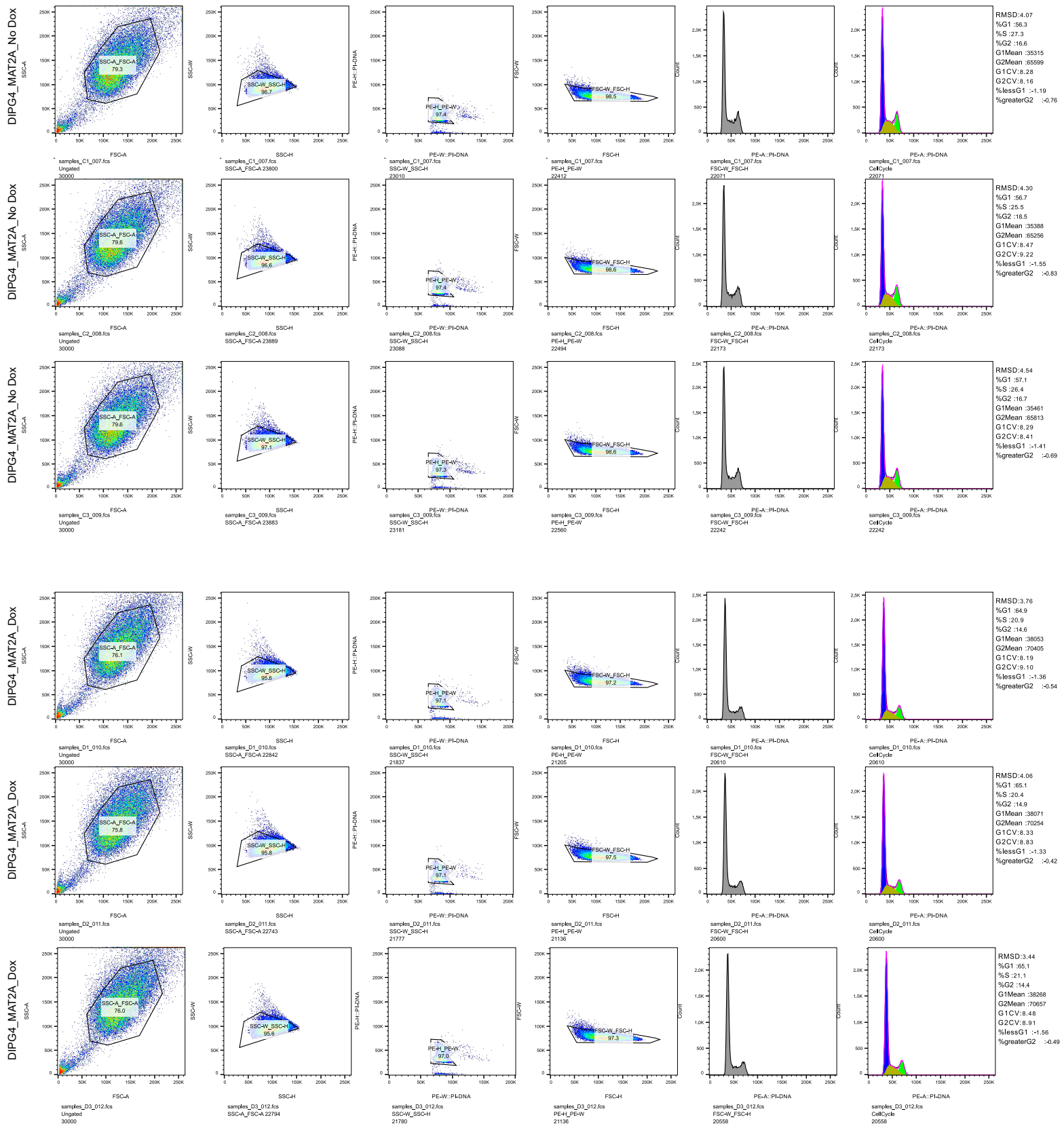
DIPG4_NS_No Dox

DIPG4_NS_No Dox

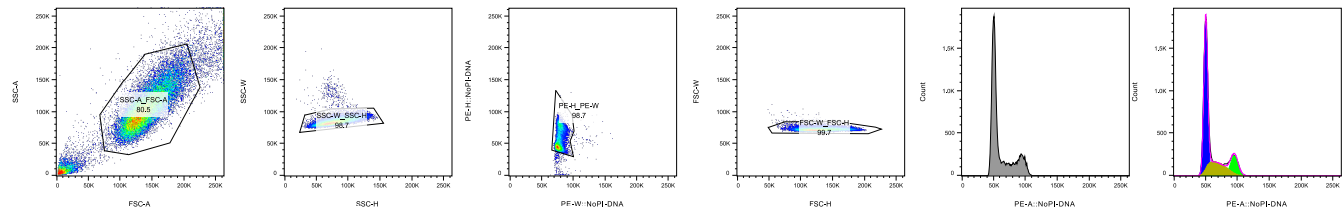
DIPG4_NS_Dox

DIPG4_NS_Dox

DIPG4_NS_Dox

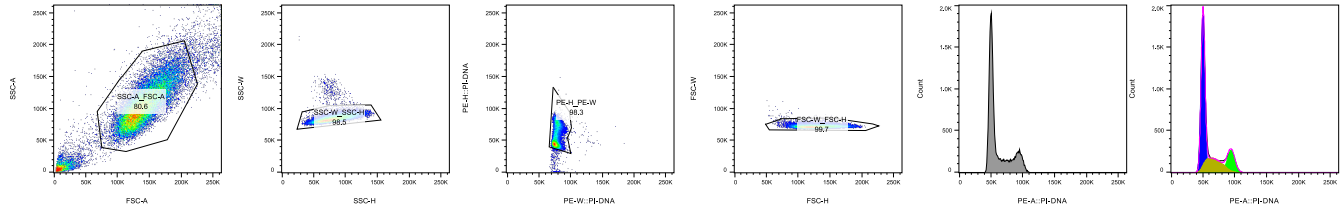


BT-245 Ns_No_Dox



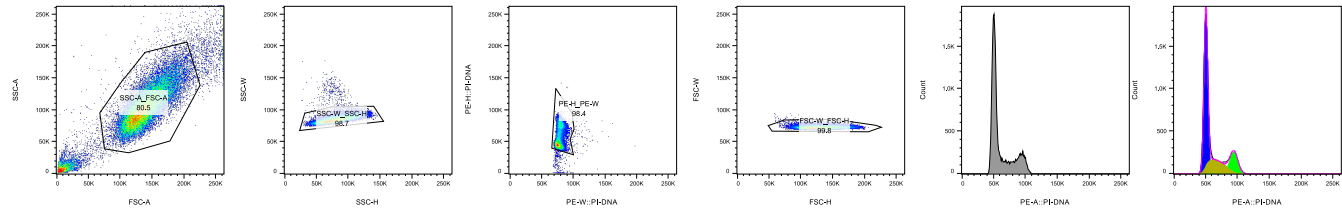
RMSD:3.58
 %G1 :98.3
 %S :24.9
 %G2 :1.7
 G1Mean :50688
 G2Mean :95517
 G1CV:8.35
 G2CV:8.69
 %lessG1 :-1.56
 %greaterG2 :-0.68

BT-245 Ns_No_Dox



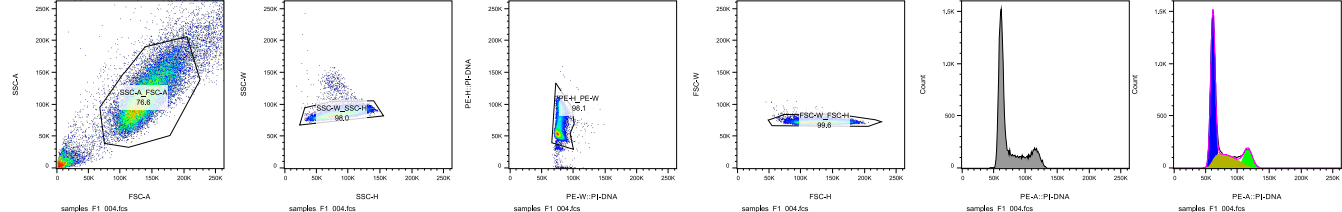
RMSD:3.43
 %G1 :98.3
 %S :23.9
 %G2 :1.6
 G1Mean :50569
 G2Mean :94510
 G1CV:8.24
 G2CV:8.80
 %lessG1 :-1.39
 %greaterG2 :-0.33

BT-245 Ns_No_Dox



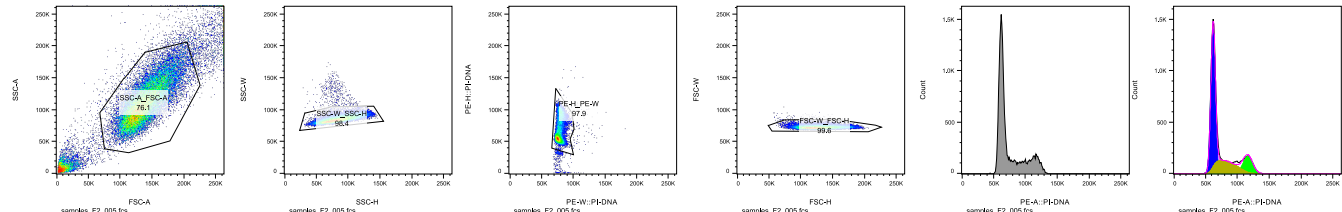
RMSD:4.04
 %G1 :98.5
 %S :22.8
 %G2 :1.1
 G1Mean :50896
 G2Mean :94720
 G1CV:8.32
 G2CV:8.36
 %lessG1 :-1.48
 %greaterG2 :-0.42

BT-245 Ns_No_Dox



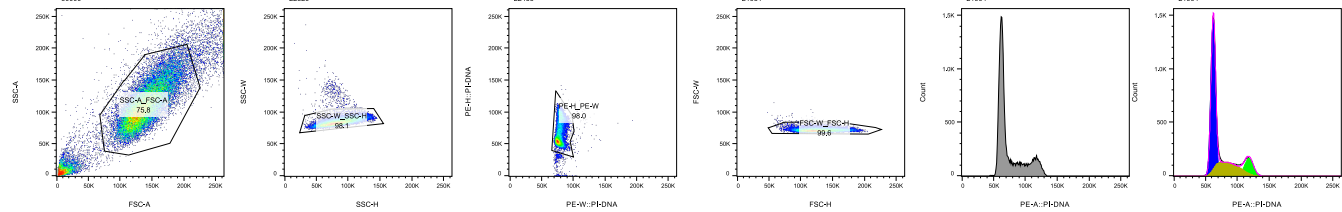
RMSD:3.65
 %G1 :98.1
 %S :26.6
 %G2 :14.3
 G1Mean :51884
 G2Mean :116739
 G1CV:7.85
 G2CV:8.37
 %lessG1 :-1.22
 %greaterG2 :-0.59

BT-245 Ns_No_Dox



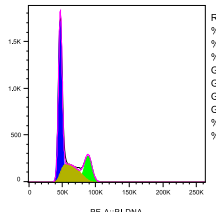
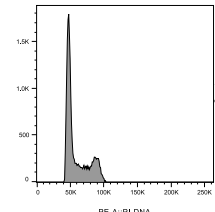
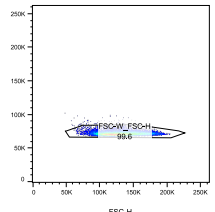
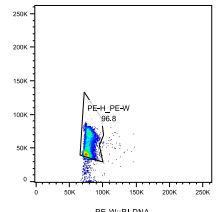
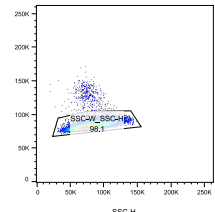
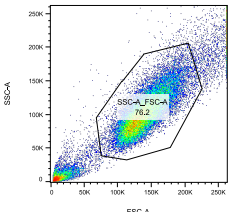
RMSD:3.42
 %G1 :98.6
 %S :25.2
 %G2 :15.5
 G1Mean :52275
 G2Mean :116532
 G1CV:7.90
 G2CV:8.19
 %lessG1 :-1.52
 %greaterG2 :-0.54

BT-245 Ns_No_Dox



RMSD:3.13
 %G1 :98.5
 %S :26.7
 %G2 :12.9
 G1Mean :52422
 G2Mean :115194
 G1CV:8.00
 G2CV:8.08
 %lessG1 :-1.19
 %greaterG2 :-0.72

BT-245 MAT2A
No_Dox



RMSD: 4.69
%G1 :55.4
%S :27.4
%G2 :18.0
G1Mean :47669
G2Mean :89018
G1 CV :7.94
G2 CV :8.75
%lessG1 :>-2.15
%greaterG2 :>-0.43

samples_G1_007.fcs
Ungated
30000

samples_G1_007.fcs
SSC-A_FSC-A
22873

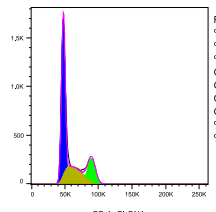
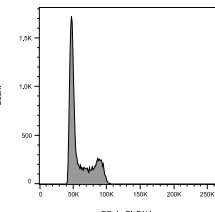
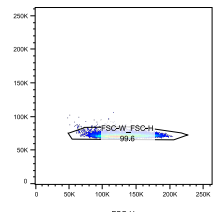
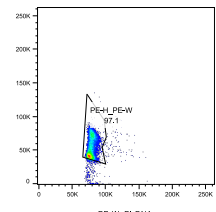
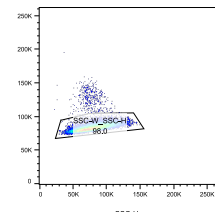
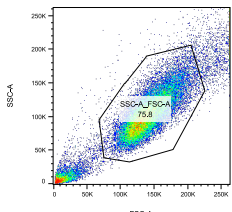
samples_G1_007.fcs
SSC-W_SSC-H
22429

samples_G1_007.fcs
PE-H_PE-W
21718

samples_G1_007.fcs
FSC-W_FSC-H
21628

samples_G1_007.fcs
CellCycle
21628

BT-245 MAT2A
No_Dox



RMSD: 4.79
%G1 :55.9
%S :26.6
%G2 :18.4
G1Mean :48128
G2Mean :89817
G1 CV :8.16
G2 CV :9.05
%lessG1 :>-2.10
%greaterG2 :>-0.50

samples_G2_008.fcs
Ungated
30000

samples_G2_008.fcs
SSC-A_FSC-A
22740

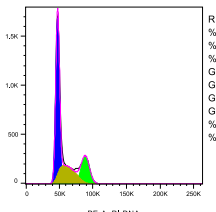
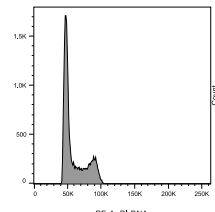
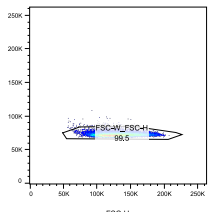
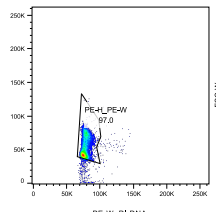
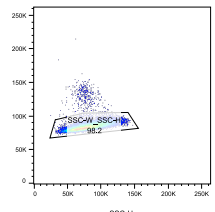
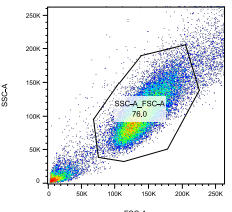
samples_G2_008.fcs
SSC-W_SSC-H
22291

samples_G2_008.fcs
PE-H_PE-W
21651

samples_G2_008.fcs
FSC-W_FSC-H
21564

samples_G2_008.fcs
CellCycle
21564

BT-245 MAT2A
No_Dox



RMSD: 5.80
%G1 :56.0
%S :25.2
%G2 :19.9
G1Mean :47887
G2Mean :88956
G1 CV :8.13
G2 CV :9.55
%lessG1 :>-2.23
%greaterG2 :>-0.28

samples_G3_009.fcs
Ungated
30000

samples_G3_009.fcs
SSC-A_FSC-A
22895

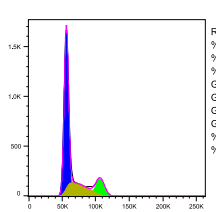
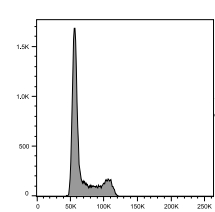
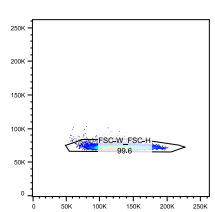
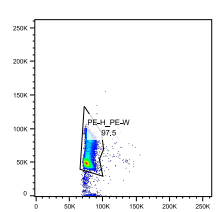
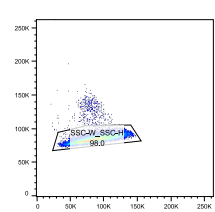
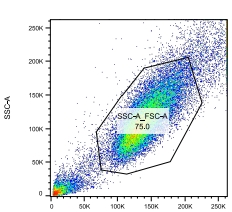
samples_G3_009.fcs
SSC-W_SSC-H
22396

samples_G3_009.fcs
PE-H_PE-W
21710

samples_G3_009.fcs
FSC-W_FSC-H
21619

samples_G3_009.fcs
CellCycle
21619

BT-245 MAT2A
Dox



RMSD: 3.23
%G1 :63.6
%S :23.2
%G2 :13.5
G1Mean :56676
G2Mean :106896
G1 CV :8.02
G2 CV :8.60
%lessG1 :>-1.41
%greaterG2 :>-0.47

samples_H1_010.fcs
Ungated
30000

samples_H1_010.fcs
SSC-A_FSC-A
22492

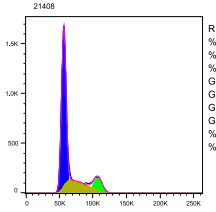
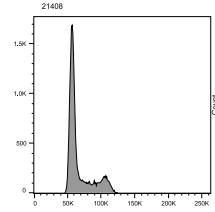
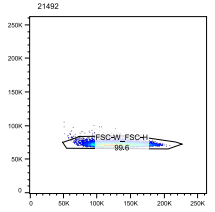
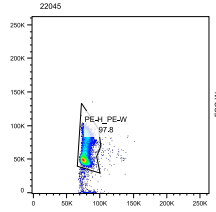
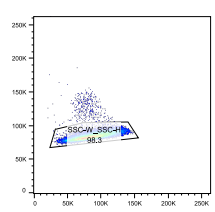
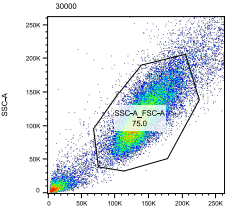
samples_H1_010.fcs
SSC-W_SSC-H
22445

samples_H1_010.fcs
PE-H_PE-W
21492

samples_H1_010.fcs
FSC-W_FSC-H
21408

samples_H1_010.fcs
CellCycle
21408

BT-245 MAT2A
Dox



RMSD: 2.93
%G1 :64.5
%S :23.9
%G2 :11.7
G1Mean :57047
G2Mean :107479
G1 CV :8.24
G2 CV :8.34
%lessG1 :>-1.40
%greaterG2 :>-0.53

samples_H2_011.fcs
Ungated
30000

samples_H2_011.fcs
SSC-A_FSC-A
22498

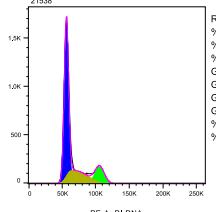
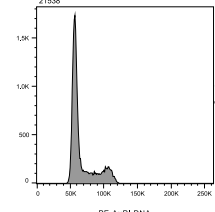
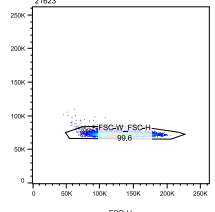
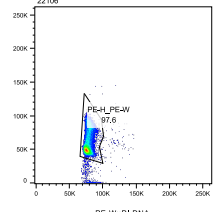
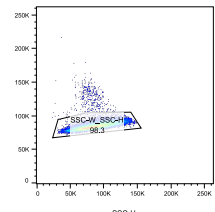
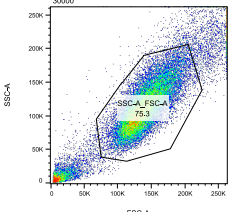
samples_H2_011.fcs
SSC-W_SSC-H
22109

samples_H2_011.fcs
PE-H_PE-W
21823

samples_H2_011.fcs
FSC-W_FSC-H
21538

samples_H2_011.fcs
CellCycle
21538

BT-245 MAT2A
Dox



RMSD: 3.44
%G1 :64.0
%S :21.9
%G2 :14.3
G1Mean :56773
G2Mean :105584
G1 CV :8.07
G2 CV :9.15
%lessG1 :>-1.30
%greaterG2 :>-0.27

samples_H3_012.fcs
Ungated
30000

samples_H3_012.fcs
SSC-A_FSC-A
22804

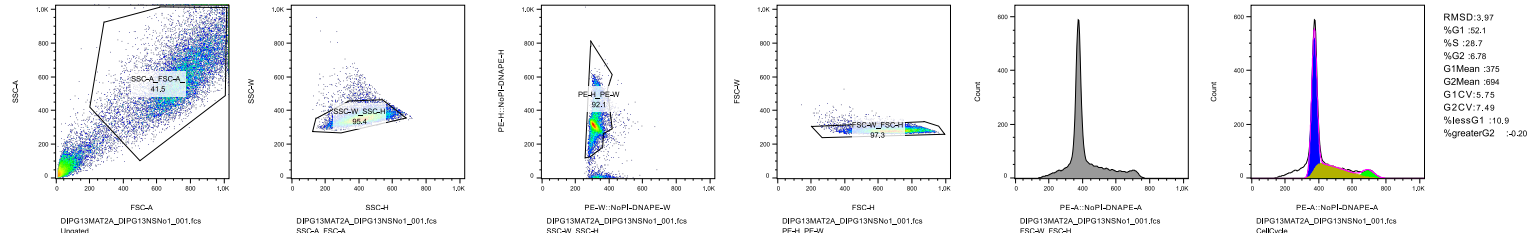
samples_H3_012.fcs
SSC-W_SSC-H
22210

samples_H3_012.fcs
PE-H_PE-W
21692

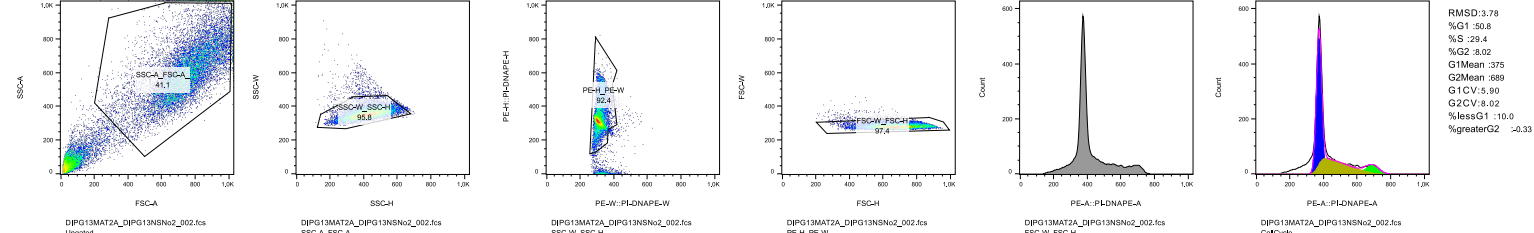
samples_H3_012.fcs
FSC-W_FSC-H
21595

samples_H3_012.fcs
CellCycle
21595

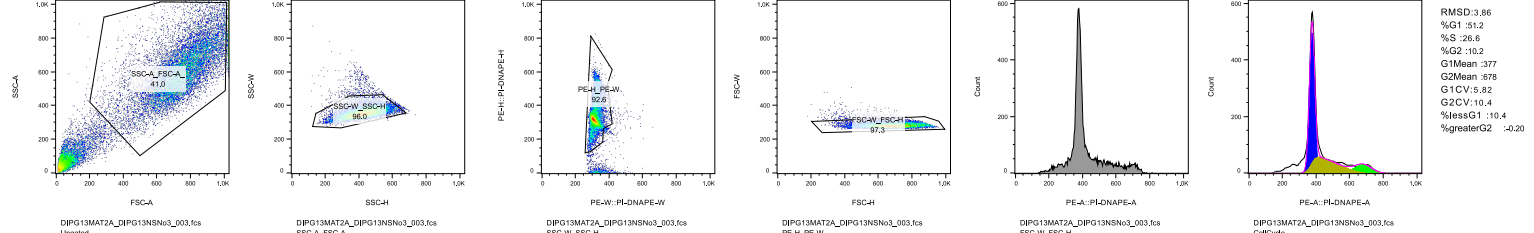
DIPG13_Ns_No_Dox



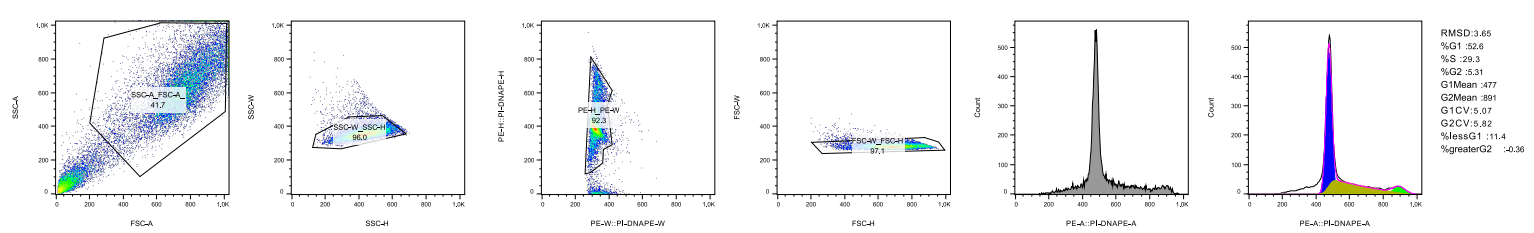
DIPG13_Ns_No_Dox



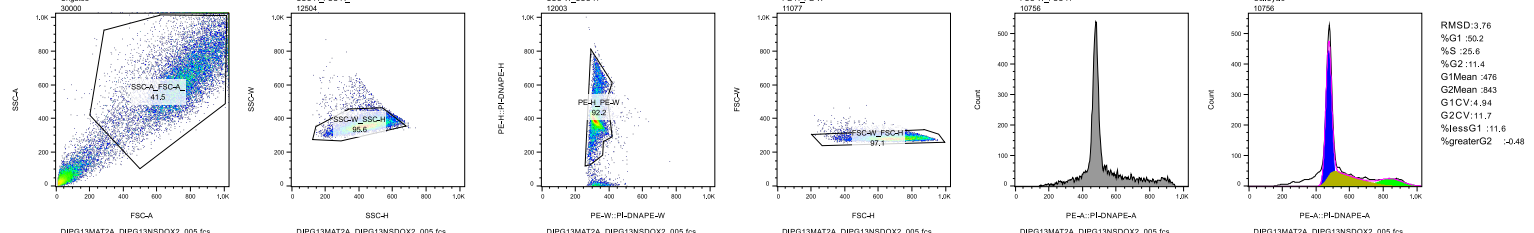
DIPG13_Ns_No_Dox



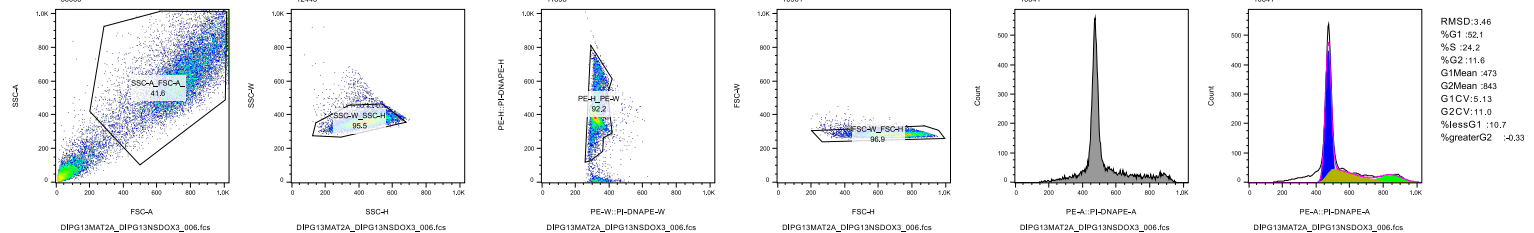
DIPG13_Ns_Dox



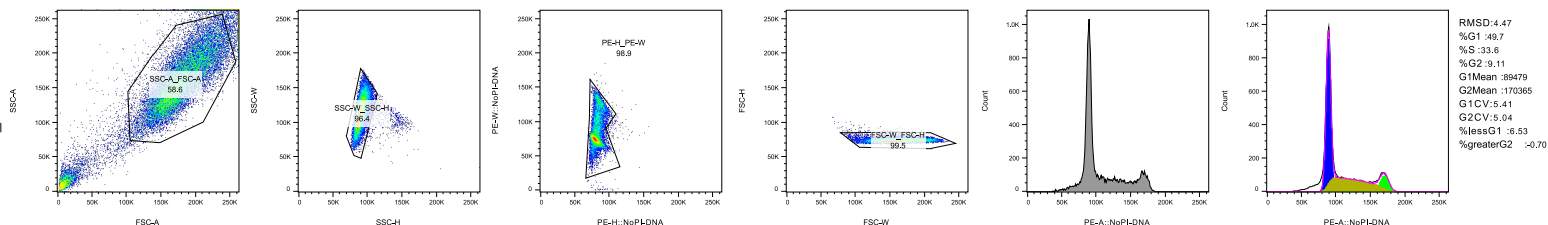
DIPG13_Ns_Dox



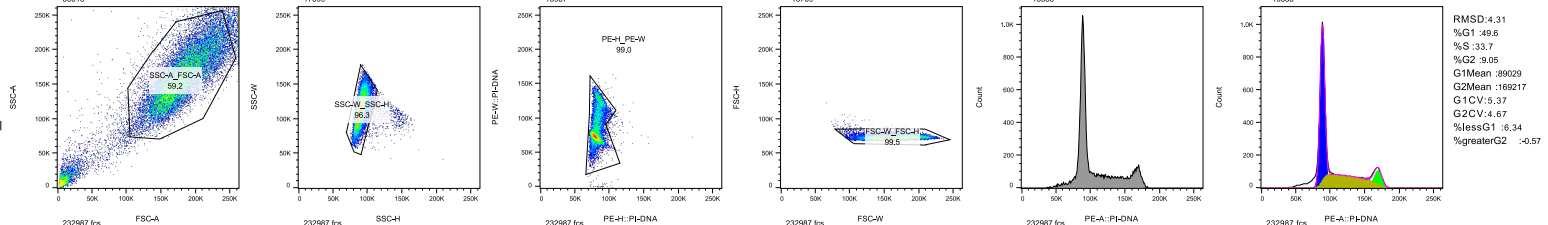
DIPG13_Ns_Dox



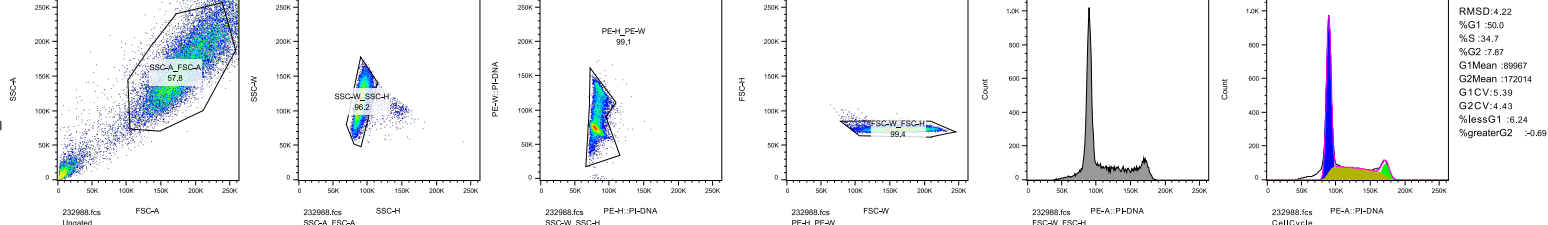
DIPG13_MATZA No Dox



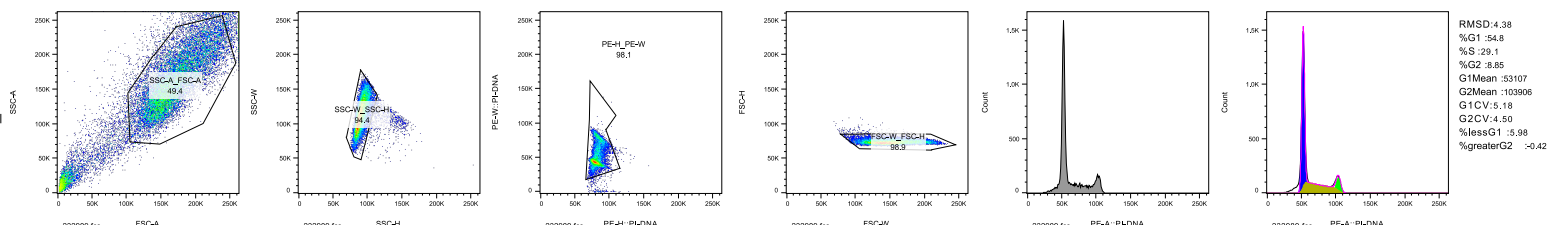
DIPG13_MATZA No Dox



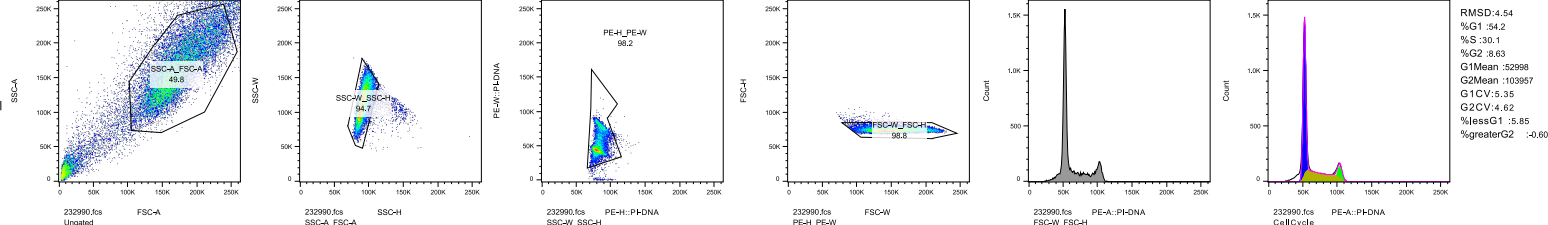
DIPG13_MATZA No Dox



DIPG13_MATZA Dox



DIPG13_MATZA Dox



DIPG13_MATZA Dox

