

29.03.24

Sudoku Mild No 14,793

6					2			
	1		5			2	3	
						4		5
			2		5	3		7
	8	9				5	1	
3		7	6		9			
9		1						
	7	4			6		2	
			7					1

Difficult No 14,794**Fiendish** No 14,795

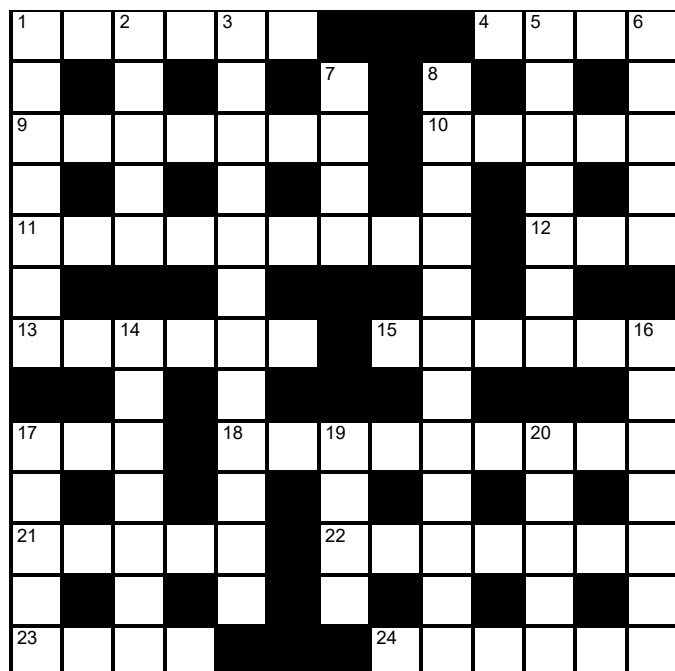
							1	8
		2						
	9		7		8			6
		9	1	3	6			
			9					
		4	5			3	2	
					5		8	4
3					1	7		
2		1				9		

© PUZZLER MEDIA

4	7					5		
		1		3				
5		9		4				2
			2					
						1	8	
9	8	7			1			
		2	4			7	9	
7			8					6
	6		9			2		5

Cluelines Stuck on Sudoku, Killer or KenKen? Call 0901 293 6263 before midnight to receive four clues for any of today's puzzles. Calls cost £1 plus your telephone company's network access charge. SP: Spoke, 0333 202 3390 (Mon-Fri 9am-5.30pm).

The Times Quick Cryptic No 2636 by Mara



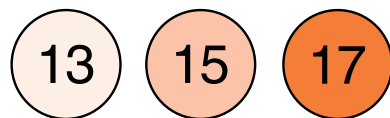
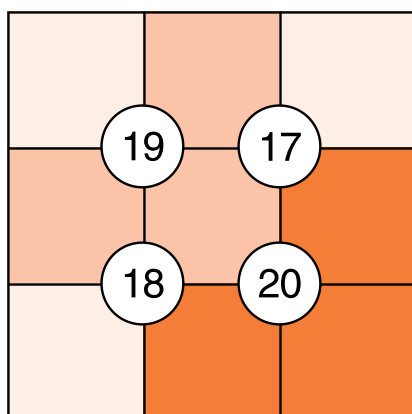
Across

- 1 Crime from girl of large proportions? (6)
- 4 Photograph game (4)
- 9 Finally, nosh in feeding container finished (7)
- 10 Wife in love mistreated one of five characters (5)
- 11 Different, Iceland? It is the same! (9)
- 12 Some steelyard in cathedral city (3)
- 13 Blabbing finally, informer is free (6)
- 15 Master mixed up class of similar ability (6)
- 17 Unfinished song expected (3)
- 18 Really, I find that hard to believe (9)
- 21 Super amount of cash (5)
- 22 Wheel around old ship (7)
- 23 Where tools may be left abandoned (4)
- 24 Book of songs, many strangely found in empty hotel (6)

Down

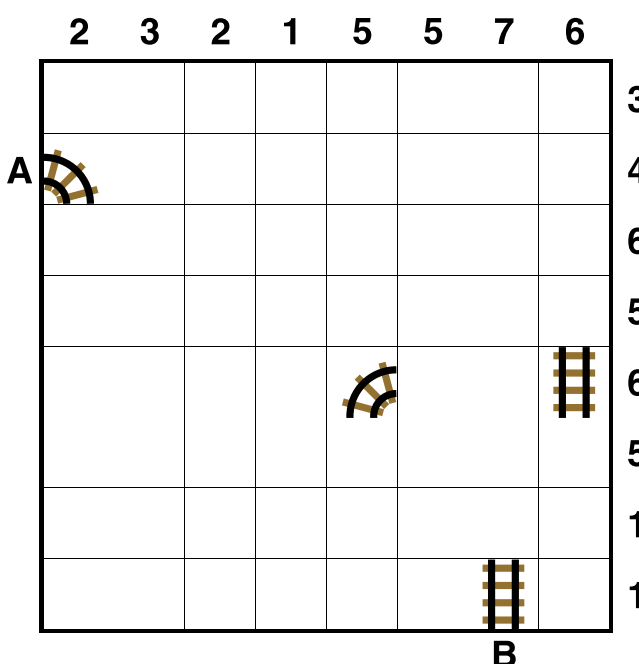
- 1 Washing that's delicate in sack (7)
- 2 Plant found in Beijing or Seoul (5)
- 3 Eccentric, tedious man in bank (12)
- 5 Non-existent location present at this moment? (7)
- 6 Close friend under pressure (5)
- 7 Smart nestling brushing off tail (4)
- 8 Leader having been deposed, insurrectionist changing (12)
- 14 Declare duration of life ordinary (7)
- 16 After month, test of municipal official (7)
- 17 French artist has wise decision initially overturned (5)
- 19 Seaside's sweet music? (4)
- 20 On a chair, an evil spirit (5)

Suko No 4076



Place the numbers 1 to 9 in the spaces so that the number in each circle is equal to the sum of the four surrounding spaces, and each colour total is correct

Train Tracks No 2206



Lay tracks to enable the train to travel from village A to village B. The numbers indicate how many sections of track go in each row and column. There are only straight sections and curved sections. The track cannot cross itself.

Word watch
David Parfitt

Azerty

- a From a Eurasian country
- b A keyboard layout
- c A measure of angular distance

Digamy

- a Illustrious reputation
- b A medicinal herb
- c A second marriage

Tao-tieh

- a A pack of divinatory cards
- b A monster with a head but no body
- c An Irish politician

Backgammon Chris Bray

Easter chouette

The gardens at Harbinger Hall looked magnificent in the early spring sunshine and a dozen children were happily hunting for Easter eggs. Sadly, the beauty and tranquillity of this scene were completely lost on the usual suspects, whose all-night chouette in the library was now in its 11th hour.

As we join it, the team (Black) have a back game structure but apparently insufficient timing to hold both anchors. The Itinerant Italian (II) was in the box as White and had doubled the team some time ago. The Dowager Duchess (DD) was team captain and the first to speak.

"I will be honest and say that I have no idea how to play this 63. We can't run all the way with a rear checker but, even so, I think we should break one of the anchors."

"I would agree," said Cautious Cuthbert (CC). "How about 23/20, 23/17?"

"Not a big enough play in my view," ventured Barry Bigplay (BB). "I like 23/17, 7/4. That way we keep the broken prime on our side of the

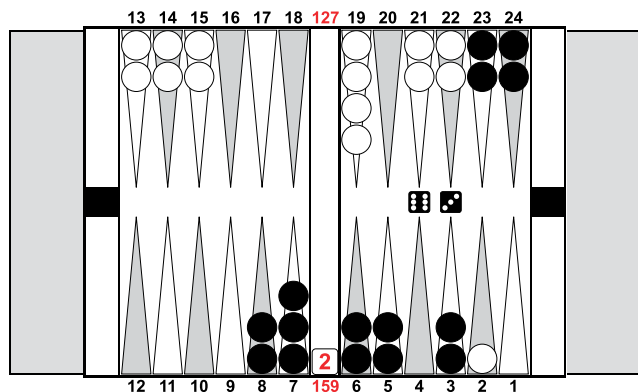
board and put the spare on our bar-point to work."

"Nice ideas," said DD, "but I still don't know the answer. What say you, EE?"

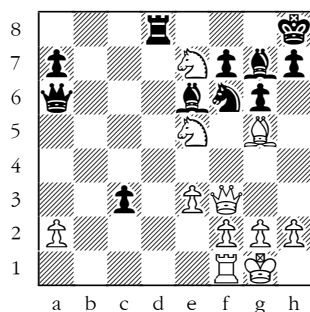
The Enigmatic Englishman had been silent up until this point but now he gave his opinion. "I think this is a very difficult problem. Because breaking an anchor leaves so many shots for White, perhaps we should keep both anchors, despite having such poor timing.

"I favour playing 8/5, 8/2*." Because of II's stripped outer board points, 8/5, 8/2* gives him some bad entering numbers, such as 32 and 52. But more importantly, if we are hit that could correct the timing for our back game. We might even get to make II's 5-pt, which would be useful. The second-best play is probably the very pure 8/2*, 7/4. I'll wager that will win us more games but lose us more gammons. We could even win the game by going forwards, but I stress that is unlikely. Our best game plan is to get a well-timed back game."

"I am still not happy, but I like your logic, EE," said DD. "Let's try 8/5, 8/2*."



Winning Move

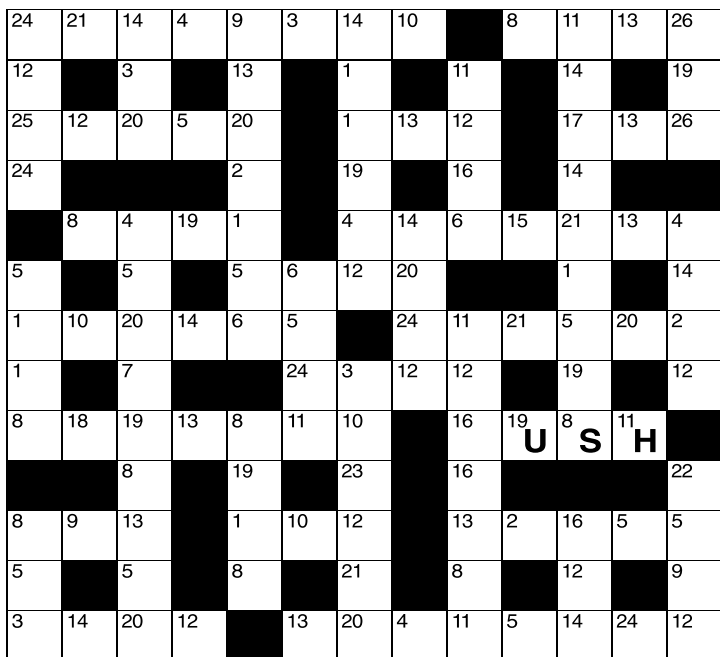


White to play.

This position is from Jumabayev-Ibadov, Titled Tuesday, chess.com 2024.

Some positions appear simple but when examined in greater detail reveal unexpected difficulties. Here 1 Bxf6 wins a piece and the reply 1... c2 does not appear at first sight to be much of a worry. However, it creates a lot of counterplay, eg 2 Rcl Qd6 is very awkward. What is a better first move for White?

Codeword No 5175



A B C D E F G H I J K L M N O P Q R S T U V W X Y Z

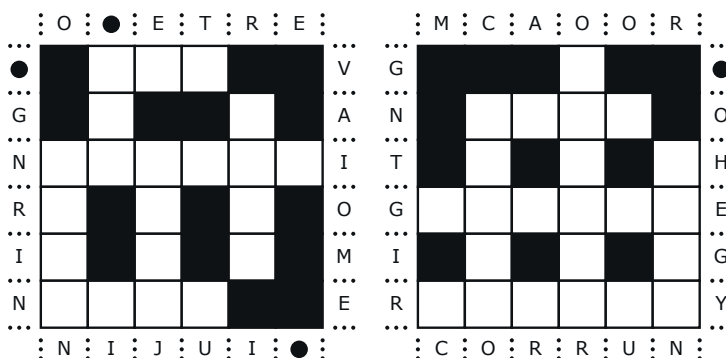
1	2	3	4	5	6	7	8	9	10	11	12	13
14	15	16	17	18	19	20	21	22	23	24	25	26

Every letter in this crossword-style grid is represented by a number from 1 to 26. Each letter of the alphabet appears in the grid at least once. Use the letters already provided to work out the identity of further letters. Enter letters in the main grid and the smaller reference grid until all 26 letters of the alphabet have been accounted for. Proper nouns are excluded. *Yesterday's solution, right*

Cluelines Stuck on Codeword? To receive 4 random clues call 0901 293 6262 or text TIMECODE to 64343. Calls cost £1 plus your telephone company's network access charge. Texts cost £1 plus your standard network charge. For the full solution call 0905 757 0142. Calls cost £1 per minute plus your telephone company's network access charge. SP: Spoke, 0333 202 3390 (Mon-Fri, 9am-5.30pm).

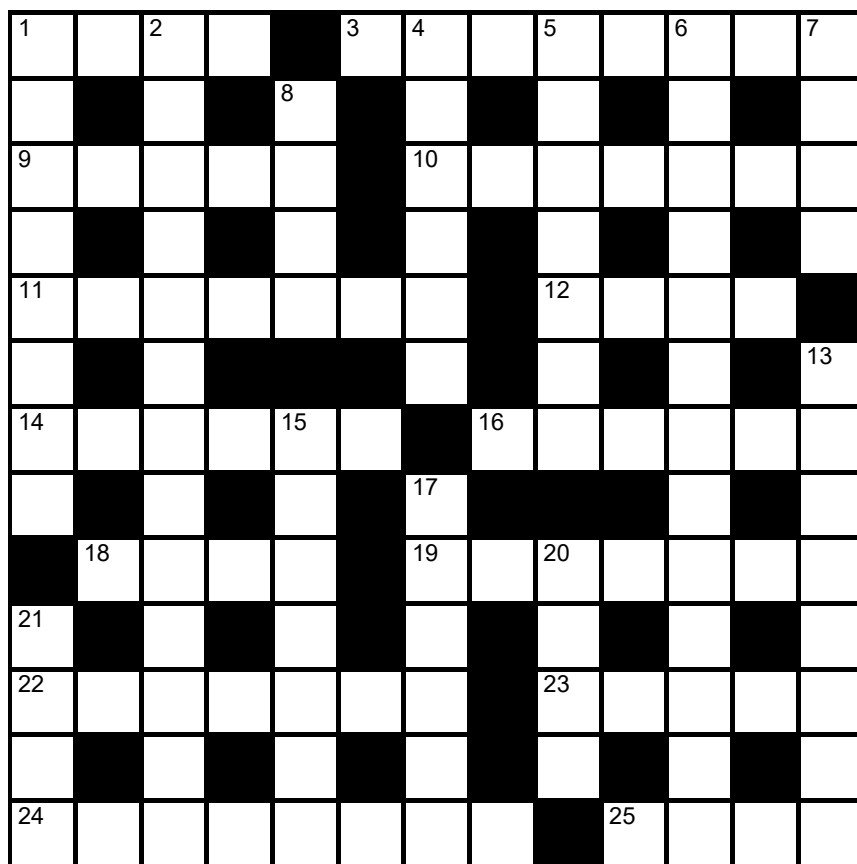
Lexica No 7329

No 7330



Slide the letters either horizontally or vertically back into the grid to produce a completed crossword. Letters are allowed to slide over other letters

times2 Crossword No 9491



Across

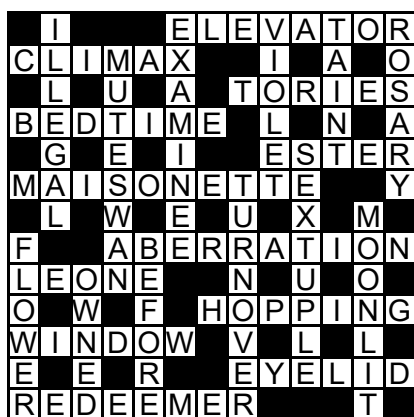
- 1 Fortune (4)
- 3 Well-mannered, obliging (8)
- 9 Birds in a gaggle or skein (5)
- 10 Push down (7)
- 11 V-shaped symbol (7)
- 12 Tropical hardwood (4)
- 14 Of the distant past (3-3)
- 16 Actively working (2,4)

- 18 South American country (4)
- 19 Large town's stronghold (7)
- 22 Construction built by social insects (3,4)
- 23 Given a monetary penalty (5)
- 24 Person tending a flock (8)
- 25 Current affairs (4)

Down

- 1 Academic in the field of formal reasoning (8)
- 2 Bright green liqueur (5,2,6)
- 4 Subdivision of Yorkshire (6)
- 5 Ship's winding apparatus (7)
- 6 Glut, surfeit (13)
- 7 Broad band of fabric (4)
- 8 Erode; NE English river (4)
- 13 Aegean island group (8)
- 15 Pertaining to yobbery (7)
- 17 Of the eye (6)
- 20 Erect clump of hair or grass (4)
- 21 Mandibles (4)

Solution to Crossword 9490



Need help with today's puzzle? Call 0905 757 0143 to check the answers. Calls cost £1 per minute plus your telephone company's network access charge. SP: Spoke, 0333 202 3390 (Mon-Fri 9am-5.30pm).

KenKen Difficult No 6167

2÷		3÷	1-	6+	8+
8+	60×				
			5-		15×
9+	24×		60×	24×	
	12+				3-
		2			

All the digits 1 to 6 must appear in every row and column. In each thick-line "block", the target number in the top left-hand corner is calculated from the digits in all the cells in the block, using the operation indicated by the symbol.

Futoshiki No 4715

		>		1
∇			∧	
			<	
	∇		∧	
	<			3
		∇	∧	∇

Fill the blank squares so that every row and column contains each of the numbers 1 to 5 once only. The symbols between the squares indicate whether a number is larger (>) or smaller (<) than the number next to it.

Kakuro No 3674

	14	17	16		36	4	3		36	16
23				7					17	
36				30					16	
			3				16			
		24				19				
42	16	25				25			4	7
17			29					4		
	13				7					
	4				4					
4			36					6	4	3
3			23				7			

Fill the grid using the numbers 1 to 9 only. The numbers in each horizontal or vertical run of white squares add up to the total in the triangle to its left or above it. The same number may occur more than once in a row or column, but not within the same run of white squares.

Quintagram®

Solve all five cryptic clues using each letter underneath once only

1 Way through mountains I don't know (4)

— — — —

2 Young person left in bed (4)

— — — —

3 Survivor transported men in storm (7)

— — — — — — —

4 French pupil books hotel: such a late hour! (8)

— — — — — — — —

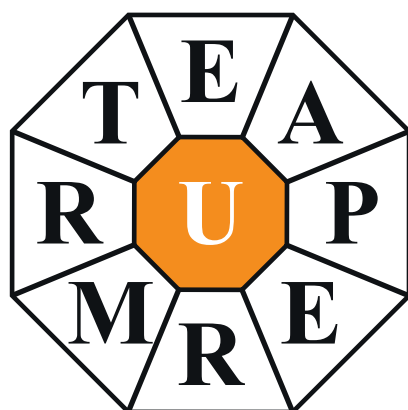
5 Larva mother found rolling around in her food (9)

A	A	A	B	C	E	E	E
E	E	G	H	H	L	L	M
M	N	N	N	O	P	R	R
R	S	S	T	T	T	U	V

Brain Trainer

EASY	120	$\times 2$	$-\frac{1}{4}$ OF IT	$\div 10$	HALF OF IT	$\times 3$	TREBLE IT	$+ 4$	$\div 5$	DOUBLE IT	ANSWER	
MEDIUM	184	$+ 42$	DOUBLE IT	$- 7$	$+\frac{3}{5}$ OF IT	$+ 23$	$\div 5$	$\times 6$	$- 114$	$\div 24$	ANSWER	
HARDER	9	CUBE IT	$+ 35$	$+\frac{3}{4}$ OF IT	$- 137$	$-\frac{4}{10}$ OF IT	$\div 15$	$+\frac{7}{8}$ OF IT	$\times 6$	DOUBLE IT	ANSWER	

Polygon

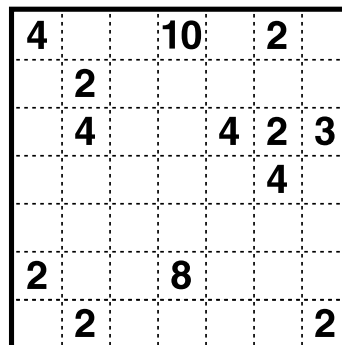


From these letters, make words of **four** or more letters, always including the central letter. Answers must be in the *Concise Oxford Dictionary*, excluding capitalised words, plurals, conjugated verbs (past tense etc), adverbs ending in LY, comparatives and superlatives. **How you rate** 15 words, average; 20, good; 26, very good; 33, excellent

Yesterday's answers

anti, **astonish**, hosta, iota, naos, oasis, oast, oath, saint, sans, santo, sash, sati, satin, shoat, snash, stain, stash, stoa, tash, tass, than, tian, tosa

Cell Blocks No 5058



Divide the grid into square or rectangular blocks, each containing one digit only. Every block must contain the number of cells indicated by the digit inside it.

Set Square No 3677

	$-$	1	$+$	$= 9$
$+$		$+$	\times	
7	\times		$-$	$= 26$
$-$		$+$	\div	
	$+$		$+$	$= 13$
$=$	11	$=$	12	$=$ 6

Enter each of the numbers from 1 to 9 in the grid, so that the six sums work. We've placed two numbers to get you started. Each sum should be calculated left to right or top to bottom.

Please note, BODMAS does not apply

Killer Moderate No 9388

15		21		4	13	7	8	
12	3					17	22	
	4	13	6		9			
17			7	25		21		
	13	11				7		
7			10		17	8	3	
	12					15		
		16		21	6	15	5	7
8								

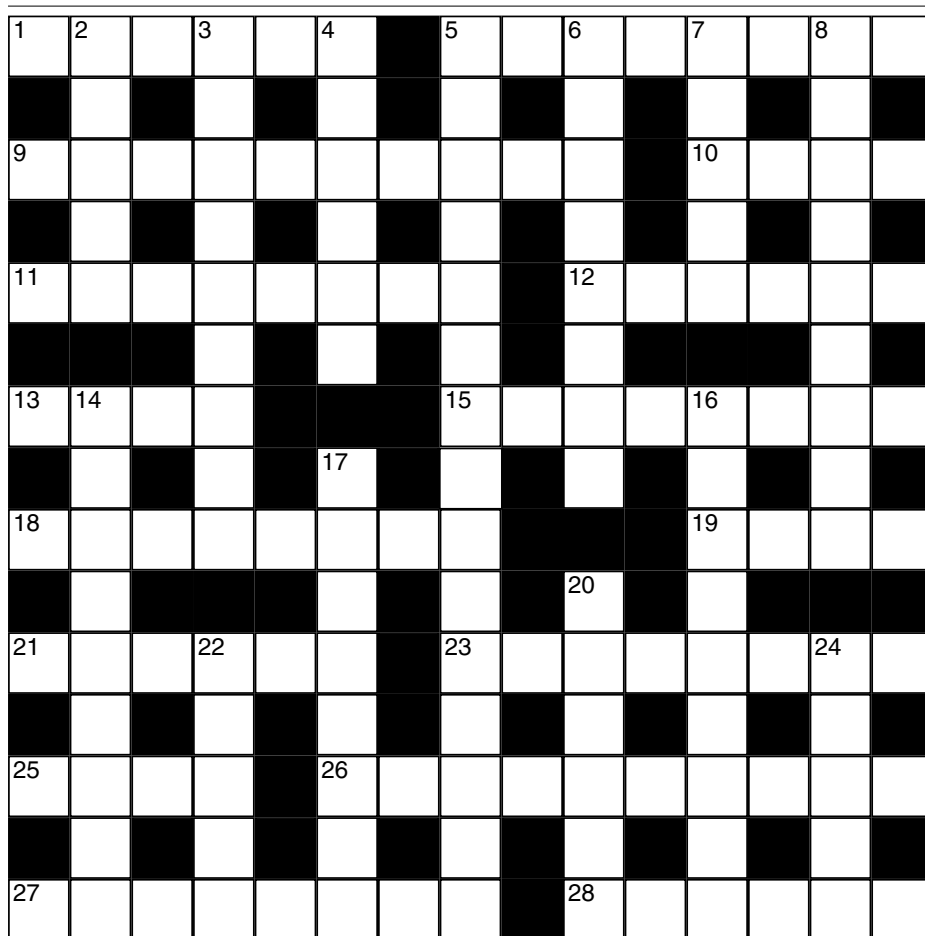
Killer Deadly No 9389

27		8			10		8	14
10				19	24			
	6			21		12	19	
18		9						
					20			
13	9	12		11		22	5	
		16	22			8		
				17				
17		14				14		

As with standard Sudoku, fill the grid so that every column, every row and every 3x3 box contains the digits 1 to 9. Each set of cells joined by dotted lines must add up to the target number in its top-left corner. Within each set of cells joined by dotted lines, a digit cannot be repeated.

Cluelines Stuck on Sudoku, Killer or KenKen? Call 0901 293 6263 before midnight to receive four clues for any of today's puzzles. Calls cost £1 plus your telephone company's network access charge. SP: Spoke, 0333 202 3390 (Mon-Fri 9am-5.30pm).

Times Crossword 28,877



ACROSS

- 1 Sawyer's rubbish leg-pull? On the contrary! (6)
- 5 Charming, animated young explorer visits Italian island on the way back (8)
- 9 Exaggerated performance from dame put him off (6,2,2)
- 10 Sticky stuff starts to get under new keyboard (4)
- 11 Conservative, having been found out, fell to pieces (8)
- 12 Soften some Lahore lentils (6)
- 13 Rodent, one escaping from silky fabric (4)
- 15 Elected Republican in Springfield is hard work (8)
- 18 Reportedly nothing large eaten by one American sea creature (8)
- 19 100ml drained from head swelling (4)
- 21 Monstrous female pair denied promotion (6)
- 23 Literary fragments smart guy introduced to workers (8)
- 25 American uncle knocked back first of home brew (4)
- 26 Criminal force probes chap instructed by director (10)
- 27 Seaside fanatic, we hear, that's brown dressed in shell suit (8)
- 28 English daisy festival (6)

DOWN

- 2 Tehran's ready to turn up in support of feminine talent (5)
- 3 Normandy favourite arrived right on time to receive honour (9)
- 4 Little squiffy? (6)
- 5 Saturday's client ordered a book case for a violinist (1,5,2,7)
- 6 Making show — and opera, potentially (2,6)
- 7 Guardian article on haircare product (5)
- 8 Learning about key battleground at the eastern front (9)
- 14 Pop called each day within confines of office (9)
- 16 Stretches grammatical constructions (9)
- 17 Florida witch doctor exorcising a bully (8)
- 20 Rhubarb cake (6)
- 22 What about time in charge of moral code? (5)
- 24 Slithy character burying Romeo's valuable collection (5)

Yesterday's solution 28,876



Check today's answers by ringing 0905 757 0141 by midnight. Calls cost £1 per minute plus your telephone company's network access charge. SP: Spoke 0333 202 3390.

Solutions

Quick Cryptic 2635

CRACKERS ADAM
OL E ORE A
NOISY PRESSEON
IG SE OCE
FUN INSURGENT
E G I N
RESENT HEATUP
C A N A
BEOUTOFIT TIN
A R U A A E A
MINARET TUNIC
B E E W E O E
INDY GARDENIA

Codeword 5174

FLEDGE SCREAM
OX U H A A
LOP SCHMALTZY
KE H A T H
SING CRITIQUE
Y S O M E U M
O V S N S T J
RHETORIC TAXI
A L U A T G
TRIBESMAN ITS
O C T T O A
REEFER MINNOW

Kakuro 3673

4	8	9	1	2	9	7
6	1	4	7	9	2	8
8	2	9	7	4	9	8
7	4	3	4	2		
9	5	3	2	1	7	9
8	7	3	1	4	2	5
4	1	2	6	8		
7	9	4	6	8	5	4
8	6	8	9	7	2	6
9	8	9	7	7	9	3

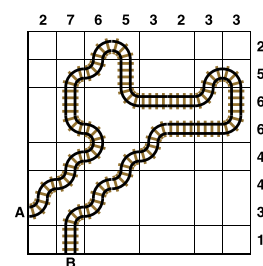
Sudoku 14,790

7	5	4	2	9	6	8	3	1
2	6	1	7	3	8	5	4	9
9	3	8	1	5	4	7	6	2
6	2	5	3	4	9	1	8	7
1	8	3	5	7	2	4	9	6
4	7	9	6	8	1	2	5	3
5	1	6	8	2	3	9	7	4
3	9	7	4	1	5	6	2	8
8	4	2	9	6	7	3	1	5

Tetonor 452

72	22	120	34
8 x 9	9 + 13	2 x 60	5 + 29
27	140	62	117
11 + 16	5 x 28	60 + 2	13 x 9
200	17	152	30
10 x 20	8 + 9	4 x 38	20 + 10
42	176	33	145
4 + 38	16 x 11	28 + 5	29 x 5

Train Tracks 2205



Sudoku 14,791

7	9	3	4	5	6	8	2	1
2	8	5	1	9	3	6	4	7
4	1	6	2	7	8	9	3	5
5	7	9	8	6	2	4	1	3
8	3	1	7	4	9	5	6	2
6	4	2	3	1	5	7	8	9
9	6	8	5	3	1	2	7	4
1	5	7	6	2	4	3	9	8
3	2	4	9	8	7	1	5	6

Cell Blocks 5057

	2	4		2
4				
			2	
		3		
				4
8	5	3		6
2			4	

Set Square 3676

4	x	6	-	1
x		+		+
8	x	5	-	3
-		x		x
2	+	9	x	7

Lexica 7327

C	R	A	Z	E
A				E
P	R	O	W	L
E			O	
			L	
S	T	U	F	F

Sudoku 14,792

5	3	8	2	1	4	7	9	6
7	6	2	5	3	9	8	1	4
4	1	9	7	8	6	5	2	3
8	9	3	1	2	7	4	6	5
2	4	7	3	6	5	1	8	9
6	5	1	9	4	8	2	3	7
3	7	5	8	9	2	6	4	1
9	8	4	6	5	1	3	7	2
1	2	6	4	7	3	9	5	8

Futoshiki 4714

4	5	3	2	>	1
2	1	5	4	3	
3	2	4	1	5	
5	4	1	<	3	>
1	3	2	<	5	4

KenKen 6166

3	2	6	5	4	1
6	3	2	4	1	5
1	4	3	2	5	6
4	6	5	1	2	3
5	1	4	6	3	2
2	5	1	3	6	4

Lexica 7328

S					
H	O	T	E	L	
A			A		I
P	I	S	T	O	N
E		I			K
D	I	R	T		

Today's solutions

Killer 9386

4	1	3	7	9	8	2	6	5
2	8	7	6	5	1	4	9	3
5	9	6	2	3	4	1	7	8
3	4	8	9	1	5	7	2	6
6	2	5	4	8	7	3	1	9
9	7	1	3	6	2	8	5	4
1	5	4	8	2	6	9	3	7
7	6	9	1	4	3	5	8	2
8	3	2	5	7	9	6	4	1

Killer 9387

2	1	3	9	7	8	4	5	6
5	7	8	6	4	2	1	9	3
6	9	4	5	1	3	7	2	8
8	3	9	1	6	7	2	4	5
4	6	5	2	8	9	3	1	7
1	2	7	3	5	4	6	8	9
9	5	1	7	2	6	8	3	4
3	8	6	4	9	1	5	7	2
7	4	2	8	3	5	9	6	1

Cryptic Quintagram

1 Pass
2 Colt
3 Remnant
4 Eleventh
5 Hamburger

Suko 4076

4	7	1
19	17	
5	3	6
18	20	
8	2	9

Brain Trainer

Easy 34
Medium 32
Harder 1,080

Word watch

Azerty (b) A keyboard layout (Collins)

Digamy (c) A second marriage (Chambers)

Tao-tieh (b) A monster with a head but no body (OED)

Chess — Winning Move

1 Qxf6! is very strong as Bxf7 3 Qxa6 and 1 ... Bxf6 2 Bxf6 is mate. Black was reduced to 1 ... Rf8 when White actually played the flashy 2 Ng4 but the simple 2 Qf4 would have been much better and would win easily