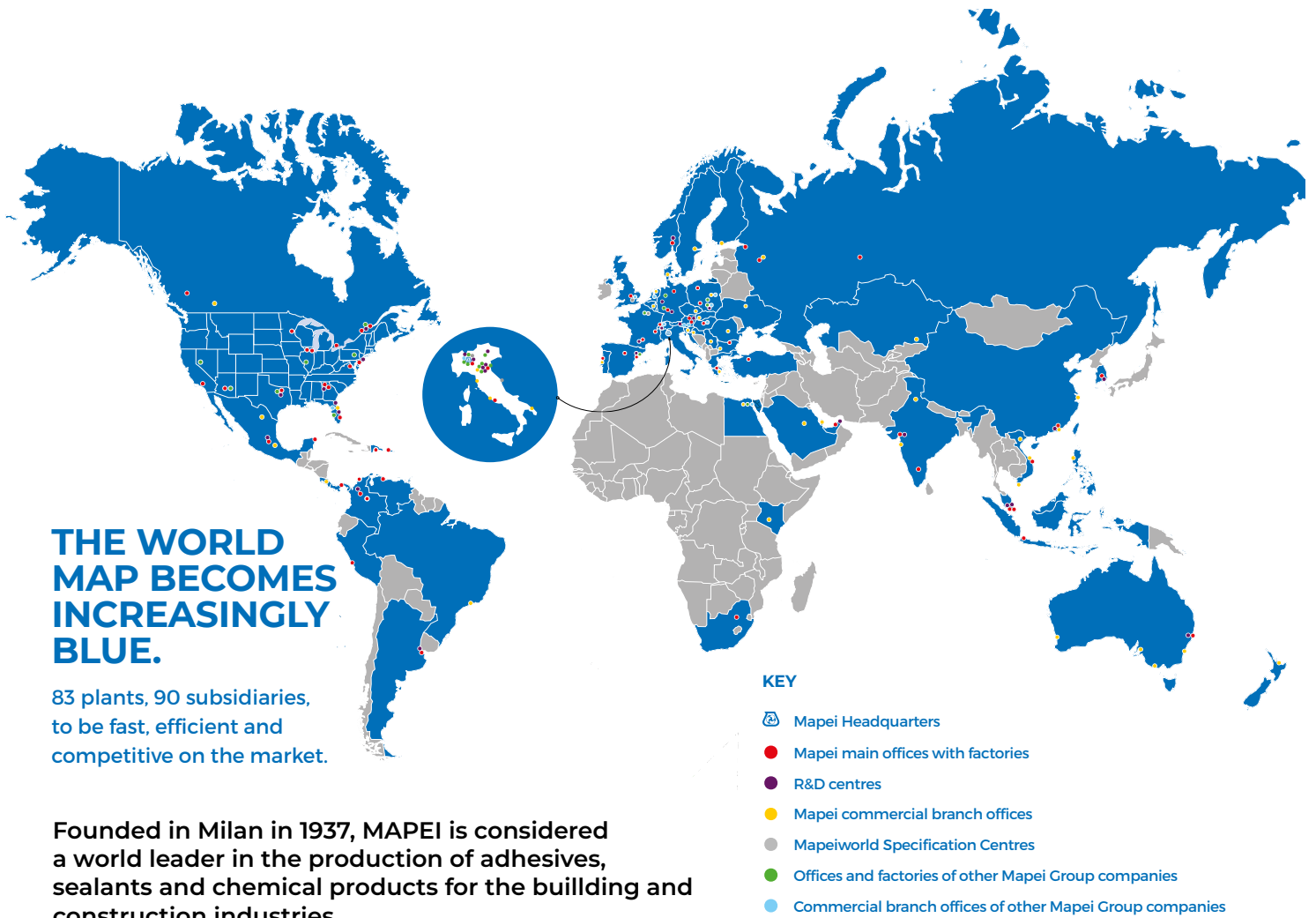


**GENERAL
CATALOGUE** 2021/2022



The MAPEI Facility in Roodekop, Germiston





Mapei in South Africa

MAPEI products have been distributed in South Africa since 2007 and through a combination of growth potential in Africa and the growing demand in South Africa, a fully-owned subsidiary – MAPEI South Africa (Pty) Ltd was opened in 2009 to service the Southern African market.

In 2017, after considerable investment from the group, MAPEI South Africa (Pty) Ltd purchased a new facility based in Roodekop, Germiston and became a full manufacturing subsidiary within the group. The subsidiary is backed by the group's unparalleled knowledge, technical experts, research capabilities and product specialists. Under the guidance of the group's central production and engineering teams, MAPEI South Africa (Pty) Ltd is manufacturing world class products for the local market, using local raw materials.

The new MAPEI facility includes state of the art production plants and technology. The company also invested heavily into other areas of the business, such as a world class QC laboratory, a 58 seater auditorium and training facility as well as other key areas within its operations.

The company has expanded its local footprint and has dedicated representatives nationwide.

MAPEI South Africa's product offerings available to the local market include, but are not limited to:

- Tile Adhesives and Grouts
- Concrete Repair and Strengthening Products
- Adhesives and Sealants for Luxury Vinyl Tiles (LVT), Textile and Resilient Products
- Waterproofing Systems and Sealants
- Flooring Systems and Solutions
- Admixtures for Concrete
- Cement Grinding Additives
- Products for Underground Construction
- Sports Flooring Solutions

10 **1 GENERAL BUILDING PRODUCTS**

- 10 1.1 Repair Mortars
- 11 1.2 Skimming Mortars
- 11 1.3 Cementitious Grouts
- 12 1.4 Epoxy Grout
- 13 1.5 Anti-Corrosion and Protective Coatings
- 14 1.6 Crack Repair
- 15 1.7 Chemical Anchors
- 15 1.8 Repair and Levelling Screeds
- 17 1.9 Bonding Promoters/ Primers
- 18 1.10 Soundproofing

23 **2 PRODUCTS FOR WATERPROOFING**

- 24 2.1 Cementitious Waterproofing
- 25 2.2 Emulsion Base Waterproofing
- 25 2.3 Synthetic Waterproofing
- 25 2.4 Water Repellents
- 26 2.5 PU Waterproofing Coatings
- 27 2.6 Primers / Bonding Promoters
- 29 2.7 Bandage Systems
- 30 2.8 Waterstops
- 31 2.9 Chemical Damp Course
- 32 2.10 Water Plugging
- 32 2.11 Waterproofing Misc.
- 34 2.12 Waterproof Coatings
- 34 2.13 Waterproofing Admixtures

37 **3 SEALANTS**

- 38 3.1 Sealants
- 40 3.2 Backing Cords for Joints

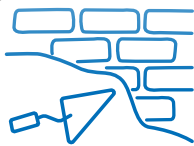
43 **4 TILE ADHESIVES AND GROUTS**

- 44 4.1 Screeds
- 44 4.2 Self-levelling Screeds
- 46 4.3 Primers
- 47 4.4 Standard Adhesives
- 47 4.5 Technical Adhesives
- 48 4.6 Technical Deformable Adhesives
- 49 4.7 Technical Fast-setting Adhesives and Levelling Compounds
- 49 4.8 Reaction Resin Adhesives
- 50 4.9 Cementitious Grouts
- 50 4.10 Epoxy Grouts

THE WORLDWIDE PARTNER IN CONSTRUCTION



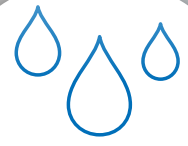
**Tile Adhesives
& Grouts**



**Concrete
Repair**



**Products
for Resilient,
LVT & Textile
Materials**



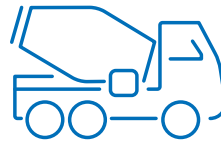
Waterproofing



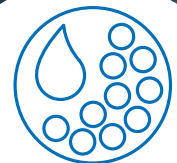
**Resin
Flooring**



Sealants



**Admixtures for
Concrete**



**Cement
Additives**



**Sports
Flooring
Solutions**



**Products for
Underground
Construction**

MAPEI is a trusted manufacturer and supplier of the highest quality building materials to the construction sector. The MAPEI Group consists of 90 subsidiaries with 83 plants in five continents.

Our team is committed to providing pre-sales advice, technical on-site support and training and after-sales support from the conception of your project to the completion.

With over 80 years in the construction industry, MAPEI is the worldwide partner in construction offering solutions from the foundation to the roof!

REBUILDING SOUTHERN AFRICA WITH MAPEI.

Learn more at mapei.co.za
Tel: + 27 11 552 8476
Email: info@mapei.co.za

 **MAPEI**[®]
ADHESIVES · SEALANTS · CHEMICAL PRODUCTS FOR BUILDING



51	4.11	Latex
52	4.12	Sealants for Tiles
52	4.13	Complementary Products for Laying Ceramic Tiles and Stone Materials
55	5	CEMENTITIOUS AND RESIN FLOORING
56	5.1	Screeds
56	5.2	Substrate Preparation
58	5.3	Primers / Bonding Promoters
59	5.4	Flooring Solutions
62	5.5	Auxiliary Products for Flooring
65	6	PRODUCTS FOR LVT, TEXTILE AND RESILIENT MATERIALS
66	6.1	Screeds
66	6.2	Self-levelling Screeds
68	6.3	Substrate Preparation
68	6.4	Primers / Bonding Promoters
70	6.5	Adhesives
72	6.6	Adhesive for Coving
73	6.7	Ancillary Products for LVT
75	7	PRODUCTS FOR DECORATIVE COATINGS
76	7.1	Wall Protection and Decorative Coatings
79	8	SOLUTIONS FOR SPORT AND RECREATION SURFACES
80	8.1	Base Preparation
80	8.2	Primers
80	8.3	Adhesives
81	8.4	Solutions for Installing Synthetic Turf
82	8.5	Mat Lay and Cushioned Floorings
82	8.6	Mapecoat TNS System
84		CONTACT US

FROM THE FOUNDATIONS TO THE ROOF, MAPEI IS YOUR CONSTRUCTION PARTNER

The **MAPEI** range of building products offers a broad range of solutions for new construction projects as well as repair and maintenance-based projects across the entire spectrum, our specifications are backed by our technical expertise and support.

MAPEI's extensive experience in the global market coupled with our commitment to Research and Development has enabled us to build a product offering that meets the highest quality standards and environmental demands worldwide.

Learn more at mapei.co.za
Tel: + 27 11 552 8476
Email: info@mapei.co.za

 **MAPEI**[®]
ADHESIVES • SEALANTS • CHEMICAL PRODUCTS FOR BUILDING



INDEX BY ALPHABET

PRODUCT NAME	PAGE/S	PRODUCT NAME	PAGE/S
A		A	
Adesilex G19	70/80	Kerapoxy Adhesive	49
Adesilex P4	49	Kerapoxy CQ	50
Adesilex P9	47	Kerapoxy Design	51
Adesilex P9 Express	47	Keraset-R	47
Adesilex PG4	13/29	L	
Antipluviol W	25	Lampocem ZA	10
Aquaflex Roof	34	Lamposilex ZA	32
Aquaflex Roof HR	34	Latex Plus	51
Aquaflex Roof Premium	34	M	
C		Mapeband	29
Copper Band	62	Mapeband Easy	29
D		Mapeband Flex Roll	29
Drain Front	32	Mapeband SA	30
Drain Vertical / Lateral	32	Mapeband TPE	30
Duresil EB	13	Mapecem Pronto	15/44/56/66
E		Mapecoat I 24	13/59
Eco Prim Grip Plus	17/46/68	Mapecoat 4 LVT	73
Eco Prim PU 1K	69	Mapecoat I 600 W	27/58/80
Elastocolor Tonachino Plus	76	Mapecoat I 620 W	59
Epojet LV	14	Mapecoat PU 20 N	26
Eporip	14/56/68	Mapecoat TNS Color	82
Eporip SCR	14/57/68	Mapecoat TNS Finish 1, 3, 4	82
F		Mapecoat TNS Grey Base Coat	83
Flexcolor 4 LVT	73	Mapecoat TNS Line	83
Fugolastic	51	Mapecoat TNS Primer EPW	80
I		Mapecoat TNS Urban	83
Idrocrete DM	34	Mapecoat TNS White Base Coat	83
Idrocrete KR 1000	35	Mapecolor CPU	62
Idroprimer	27	Mapecolor Paste	62
Idrosilex	35	Mapefer 1K	13
Idrostop	30	Mapefill GP	12
Idrostop Mastic	30	Mapefill ZA	11
Idrostop PVC BE	31	Mapefix EP 585	15
Idrostop PVC BI	31	Mapefix VE SF	15
Isolastic	51	Mapeflex Blackfill	38
K		Mapeflex PU 45 FT	38/52
Kerabond Plus	48	Mapeflex PU 50 SL	38
Kerabond T-R	48	Mapeflex PU 65	39
Kerabond T-R Express	48	Mapeflex PU 70 NS	39
Keracolor FF	50	Mapeflex PU 70 SL	39
Keraflex Maxi S1	48	Mapeflex PU S25	38
Keraflex S1 Express	49	Mapefloor CPU/COVE	59
Keralastic T	49	Mapefloor CPU/HD	59
		Mapefloor CPU/MF	60
		Mapafloor FC 200 ME	60
		Mapefloor I 300 SL	60
		Mapefloor I 320 SL CONCEPT	60
		Mapefloor I 360 AS	61

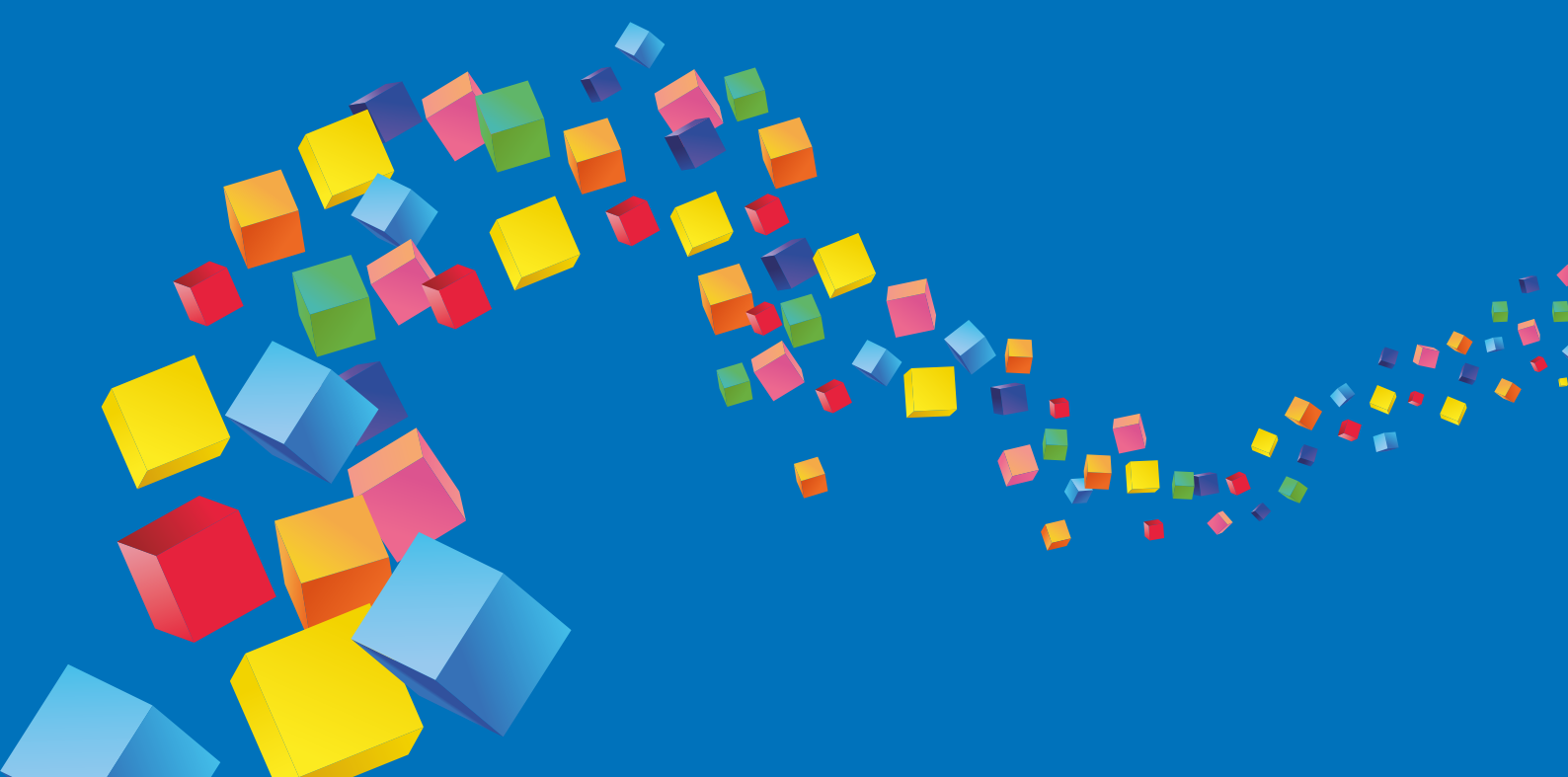
INDEX BY ALPHABET

PRODUCT NAME	PAGE/S	PRODUCT NAME	PAGE/S
Mapefloor I 390 EDF	61	Polypaint Alu	33
Mapefloor PU 400 LV	26/61	Polyprimer	27
Mapefloor PU 410	26/61	Primer 3296	28/46/58
Mapefoam	40	Primer G	18/46/69
Mapeguard UM 35	52	Primer Grip White	18/46/69
Mapegrout Hi-Flow ZA	10	Primer M	28/40
Mapegrout T40	10	Primer SN	28/58
Mapegrout T60 ZA	10	Primer W-AS	58
Mapelastic	24	Prosfas	57
Mapelastic Aquadefense	25	Purtop 400 M	26
Mapelastic Foundation	24	Purtop 1000	27
Mapelastic Guard	14		
Mapelastic Smart	24	Q	
Mapelux Lucida	62	Quarzolite Base Coat	76
Mapelux Opaca	63	Quarzolite Tonachino	76
Mapenet 150	33	Quarzolite Tonachino Plus	76
Mapeproof Swell	32		
MapePUR Universal Foam M	39	S	
Mapeset	47	Silexcolor Tonachino	77
Mapesil AC	40/52	Stabilcem SCC	12
Mapesil LM	52	Stabilcem T	12
Mapesilent Band R	18		
Mapesilent Comfort	19	T	
Mapesilent Panel	19	Topcem	16/44/56/66
Mapesilent Roll	19	Topcem Pronto	16/44/56/66
Mapesilent Tape	19	Triblock P	28/69
Mapesoil 100	80		
Mapesonic CR	20	U	
Mapesonic GD 4 LVT	20	Ultrabond 333	70
Mapesonic SA 4 LVT	20	Ultrabond Eco 4 LVT	70
Mapesonic Strip	20	Ultrabond Eco 530	70
Mapestop	31	Ultrabond Eco Contact	72
Mapestop Diffusion Kit	31	Ultrabond Eco MS 4 LVT	71
Mapetex 50	33	Ultrabond Eco MS 4 LVT Wall	71
Mapetex Sel	33	Ultrabond Eco PU 2K	50
Mapetex System	53	Ultrabond Eco S955 1K	71
Mapetop N AR6	57	Ultrabond Eco Tack	71
		Ultrabond Eco TX1	72
P		Ultrabond Eco V4 SP	72
Planex HR	15/44/66	Ultrabond Eco V4SP Conductive	72
Planicrete	17	Ultrabond Turf 2 Stars	81
Planicrete SP	18	Ultrabond Turf PU 1K	81
Planigrout 300	12	Ultrabond Turf Repair	81
Planipatch Fast Track	68	Ultrabond Turf Tape 300	81
Planiseal 88	24	Ultrabond Turf Tape Pro	82
Planiseal 288	25	Ultracolor Plus	50
Planitop 100	11	Ultraplan Contract	16/45/67
Planitop 110 ME	11	Ultraplan Eco 20	16/45/67
Planitop Smooth & Repair R4 ZA	11/57	Ultraplan Maxi	17/45/67
Plastimul DPC	25	Ultraplan Renovation	17/45/67



Planitop Smooth & Repair R4 ZA being applied to repaired wall

GENERAL BUILDING PRODUCTS



1. GENERAL BUILDING PRODUCTS

1.1 Repair Mortars



Lampocem ZA

Ready-to-use, quick-setting and hardening, anti-shrinkage hydraulic binder.



TECHNICAL DATA:

Maximum dimension of aggregate: < 0.1 mm.
EMICODE: EC1 Plus - very low emission.
Mixing ratio: 100 parts of LAMPOCEM with 20-21 parts of water.
Pot life of mix: approximately 1 minute (at +23°C).
Storage: 12 months.
Application: trowel or gauging trowel.
Consumption: 1.8 kg/dm³ of cavities to be filled.
Packaging: boxes of 4x5 kg alupacks.



Mapegrout Hi-Flow ZA

Fibre-reinforced, shrinkage-controlled mortar for repairing concrete.



TECHNICAL DATA:

Maximum dimension of aggregate: 2.5 mm.
Mixing ratio: 100 parts of MAPEGROUT HI-FLOW with 13-14 parts of water and 0.25% of MAPECURE SRA.
Pot life of mix: approximately 1 hour (at +20°C).
Minimum applicable thickness: 1 cm.
Maximum applicable thickness: 4 cm per layer.
Classification: EN 1504-3 - class R4 structural mortar.
Storage: 12 months.
Application: pouring into formwork.
Consumption: approximately 21 kg/m² per cm of thickness.
Packaging: 25 kg paper bags.



Mapegrout T40

Medium-strength (40 MPa), shrinkage-compensated fibre-reinforced thixotropic mortar for repairing concrete.



TECHNICAL DATA:

Maximum dimension of aggregate: 2.5 mm.
Mixing ratio: 100 parts of MAPEGROUT T40 with 15.5-16.5 parts of water.
Pot life of mix: approximately 1 hour (at +20°C).
Minimum applicable thickness: 1 cm.
Maximum applicable thickness: 3-3.5 cm per layer.
Classification: EN 1504-3 - class R3 structural mortar.
Storage: 12 months.
Application: gauging trowel, trowel or rendering machine.
Consumption: approximately 18.5 kg/m² per cm of thickness.
Packaging: 25 kg paper bags.



Mapegrout T60 ZA

Shrinkage-compensated, fibre-reinforced, chloride sulphate-resistant thixotropic mortar for repairing concrete.



TECHNICAL DATA:

Maximum dimension of aggregate: 2.5 mm.
Mixing ratio: 100 parts of MAPEGROUT T60 ZA with 16.5-17.5 parts of water and 0.25% of MAPECURE SRA.
Pot life of mix: approximately 1 hour (at +20°C).
Minimum applicable thickness: 1 cm.
Maximum applicable thickness: 4 cm per layer on vertical surfaces and 2 cm per layer on ceilings.
Classification: EN 1504-3 - class R4 structural mortar.
Storage: 12 months.
Application: gauging trowel, trowel or rendering machine.
Consumption: 18.5 kg/m² per cm of thickness.
Packaging: 25 kg paper bags.



Planitop Smooth & Repair R4 ZA

Rapid-setting shrinkage-compensated thixotropic fibre-reinforced class R4 structural cementitious mortar applied in a single layer from 3 to 40 mm thick for repairing and smoothing concrete.



TECHNICAL DATA:

Maximum size of aggregate: 1.2 mm.
Mixing ratio: 100 parts of PLANITOP SMOOTH & REPAIR R4 ZA with 16.5-17.5 parts of water.
Pot life of mix: approx. 15 mins. at +10°C to +25°C. The pot life of the mix may be extended by 15-20 mins. by adding the set retarding admixture MAPETARD ES (one 0.25 kg bottle per 25 kg bag of PLANITOP SMOOTH & REPAIR R4 ZA).
Minimum applicable thickness: 3 mm.
Maximum applicable thickness: 4 cm per layer.
Classification: EN 1504-3 - class R4 structural mortar; EN 1504-2 - coating (C) principles MC and IR.
EMICODE: EC1 Plus - very low emission.
Storage: 12 months.
Application: gauging trowel or trowel.
Consumption: approx. 17 kg/m² per cm of thickness.
Packaging: 25 kg paper bags and 5 kg alupacks.

1.2 Skimming Mortars



Planitop 100

Quick-setting, light-grey coloured fine mortar for repairing and smoothing concrete and render.



TECHNICAL DATA:

Maximum dimension of aggregate: 0.2 mm.
Mixing ratio: 100 parts of PLANITOP 100 with 26-27 parts of water.
Pot life of mix: 20-30 minutes (at +20°C).
Minimum applicable thickness: 1 mm.
Maximum applicable thickness: up to 30 mm if 30% sand is added.
Classification: EN 1504-2 - coating (C) principles MC and IR.
Storage: 12 months.
Application: trowel.
Consumption: 1.3 kg/m² per mm of thickness.
Packaging: 25 kg bags.



Planitop 110 ME

Single-component, normal setting cementitious mortar for smoothing concrete surfaces.

TECHNICAL DATA:

Colour of mix: Grey
Pot life of mix: approx. 1 hour.
Consistency of mix: Thixotropic - trowellable.
Surface drying time: 30 mins
Waiting time before applying coatings: 3 days
Application: N° 4, 5 or 6 notched trowel.
Storage: 12 months.
Consumption: 1.3 kg/m² per mm of thickness
Packaging: 20 kg paper bags

1.3 Cementitious Grouts



Mapefill ZA

Moderate performance fluid expansive mortar for anchoring objects in place.



TECHNICAL DATA:

Maximum dimension of aggregate: 2.5 mm.
Mixing ratio: 100 parts of MAPEFILL ZA with 14-15 parts of water.
Pot life of mix: approximately 1 hour (at +20°C).
Maximum applicable thickness: 6 cm per layer.
Classification: EN 1504-6.
Storage: 12 months.
Application: pouring.
Consumption: 1.95 kg/dm³ of cavities to be filled.
Packaging: 25 kg paper bags.



Mapefill GP

High-performance fluid expansive mortar for anchoring objects in place.



TECHNICAL DATA:

Maximum dimension of aggregate: 2.5 mm.
Mixing ratio: 100 parts of MAPEFILL GP with 14-15 parts of water.
Pot life of mix: approximately 1 hour (at +20°C).
Maximum applicable thickness: 6 cm per layer.
Classification: EN 1504-6.
Storage: 12 months.
Application: pouring.
Consumption: 1.95 kg/dm³ of cavities to be filled.
Packaging: 25 kg paper bags.



Stabilcem SCC

Cementitious Binder for manufacturing dimensionally stable self compacting concrete mixtures to repair concrete structures.

TECHNICAL DATA:

Consistency: Powder
Colour: Grey
Consumption:
 - Concrete with Dmax = 8mm : 600kg/m³
 - Concrete with Dmax = 20mm : 500-600kg/m³
Packaging: 20 kg paper bags



Stabilcem T

One-component pre-blended thixotropic mortar with controlled shrinkage for anchoring, by injection, tie rods and bolts in all types of grounds.



TECHNICAL DATA:

Consistency: Powder.
Colour: Grey.
Workability: approximately 90 minutes at +20°C.
Consumption: approximately 1.75 kg per litre of cavity 1750 kg/m³.
Packaging: 25kg paper bags.

1.4 Epoxy Grout



Planigrout 300

Three-component fluid epoxy mortar for anchorage work.



TECHNICAL DATA:

Maximum dimension of aggregate: 2 mm.
Mixing ratio:
 comp. A : comp. B : comp. C = 16 : 6 : 100.
Pot life of mix: 1 hour (at 23°C).
Maximum applicable thickness: 5 cm per layer.
Classification: EN 1504-6.
Storage: 12 months.
Application: pouring.
Consumption: 2 kg/m² per mm of thickness.
Packaging:
 12.2 kg kits:
 - 1.6 kg drums (comp. A);
 - 0.6 kg drums (comp. B);
 - 10 kg bags (comp. C).
 36.6 kg units:
 - 4.8 kg drums (comp. A);
 - 1.8 kg drums (comp. B);
 - 30 kg bags (comp. C).



Adesilex PG4

Two-component, thixotropic epoxy adhesive with modified rheology for bonding MAPEBAND, MAPEBAND TPE, PVC strips and Hypalon and for structural bonds.



TECHNICAL DATA:

Mixing ratio: comp. A : comp. B = 3 : 1.
Pot life of mix: 70 minutes (at +23°C).
Minimum applicable thickness: 1-2 mm.
Maximum applicable thickness: 1 cm per layer.
Classification: EN 1504-4.
Storage: 24 months.
Application: trowel.
Consumption: 1.60-1.65 kg/m² per mm of thickness.
Packaging:
2 kg kits:
– 1.5 kg drums (comp. A);
– 0.5 kg drums (comp. B).
6 kg kits:
– 4.5 kg drums (comp. A);
– 1.5 kg drums (comp. B).

1.5 Anti-Corrosion and Protective Coatings



Duresil EB

Two-component, anti-acid epoxy paint modified with hydro-carbide resin for protecting concrete and steel surfaces.



TECHNICAL DATA:

Consistency: component A fluid paste, component B fluid paste.
Colour: black and grey.
Density (g/cm³): component A 1.75, component B 1.40.
Dilution rate: ready to use.
Complete hardening time: 7 days.
Application temperature range: from +5°C to +30°C.
Cleaning: nitro solvent or xylol.
Storage: 12 months.
Application: roller, brush or spray.
Consumption: 0.4-0.45 kg/m² for approx. 250 µm thickness.
(for one coat of the product).
Packaging: 10 kg kits (A + B).



Mapecoat I 24

Two-component epoxy paint for anti-acid coatings on concrete surfaces.



TECHNICAL DATA:

Mixing ratio: comp. A : comp. B = 4 : 1.
Colour of mix: white, grey (Ral 7001) and Neutral and in RAL colours.
Application temperature range: from +5°C to +30°C.
Workability time: 30-40 minutes.
Setting time of film: 4-5 hours.
Waiting time between first and second coat: 6-24 hours.
Final hardening time: 3 days.
Storage: 24 months in its original sealed packaging.
Application: brush, roller or airless spray.
Consumption: 400-600 g/m² per coat.
Packaging:
– 5 kg kits (A+B);
– 15 kg kits (A+B).



Mapefer 1K

One-component, anti-corrosion cementitious mortar for steel reinforcement rods.



TECHNICAL DATA:

Maximum dimension of aggregate: 0.5 mm.
Mixing ratio: 100 parts of MAPEFER 1K with 20-22 parts of water.
Pot life of mix: approximately 1 hour (at +20°C).
Minimum applicable thickness: 2 mm.
Waiting time between each coat: approximately 2 hours.
Waiting time before applying mortar: 6-24 hours.
Classification: EN 1504-7.
Storage: 12 months.
Application: brush in two coats.
Consumption: 100 g/m for 8 mm diameter rebar (2 mm of product applied).
Packaging: boxes of 4x5 kg sachets.



Mapelastic Guard

Two-component, elastic cementitious mortar for protecting large concrete structures subjected to high stress.



TECHNICAL DATA:

Mixing ratio: 3 parts of MAPELASTIC GUARD comp. A with 1 part of MAPELASTIC GUARD comp. B.

Pot life of mix: approximately 1 h (at +20°C).

Minimum applicable thickness: 2 mm per layer.

Classification: EN 1504-2 - coating (C) principles PI, MC and IR.

Storage: 12 months (comp. A); 24 months (comp. B).

Application: trowel or by spray with a rendering machine.

Consumption:

– approximately 1.7 kg/m² per mm of thickness (by trowel).

– approximately 2.2 kg/m² per mm of thickness (by spray).

Packaging:

32 kg kits:

– 24 kg bags (comp. A);

– 8 kg tanks (comp. B).

1.6 Crack Repair



Epojet LV

Two-component epoxy resin with a very low viscosity for injecting into micro-cracks, also on wet surfaces.



TECHNICAL DATA:

Mixing ratio: comp. A : comp. B = 4 : 1.

Pot life of mix: 35 minutes (at +23°C).

Classification: EN 1504-5.

Storage: 24 months.

Application: injection or pouring.

Consumption:

– sealing cracks: 1.1 kg/l of cavities to be filled;

– bonding concrete to steel: 1.1 kg/m² per mm of thickness.

Packaging:

2.5 kg kits:

– 2 kg drums (comp. A);

– 0.5 kg bottles (comp. B).



Eporip

Two-component, solvent-free, epoxy adhesive for construction joints and monolithic sealing of cracks in screeds.



TECHNICAL DATA:

Mixing ratio: comp. A : comp. B = 3 : 1.

Pot life of mix: 30 minutes (at +23°C).

Classification: EN 1504-4.

Storage: 24 months.

Application: brush or pouring.

Consumption:

– second pours: 0.5-2 kg/m²;

– sealing cracks: 1.35 kg/l of cavities to be filled.

Packaging:

2 kg kits:

– 1.5 kg drums (comp. A);

– 0.5 kg drums (comp. B).

10 kg kits:

– 7.5 kg metal drums (comp. A);

– 2.5 kg drums (comp. B).



Eporip SCR

Two-component rapid-hardening silicate-urethane resin for sealing cracks and joints and carrying out small repairs.



TECHNICAL DATA:

Consistency: comp. A: liquid; comp. B: liquid.

Mixing ratio (in volume): comp. A : comp. B = 1 : 1.

Setting time: 45 mins.

Workability time: 10-12 mins.

Storage: 12 months.

Application: extruded through nozzle on can.

Packaging: boxes containing 6 (A+B) kits (comp. A: 300 ml; comp. B: 300 ml).

1.7 Chemical Anchors



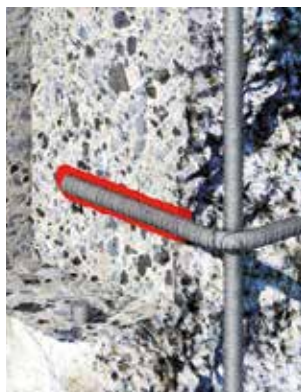
Mapefix VE SF

Styrene-free, hybrid vinyl resin-based chemical anchor for structural loads. Certified for threaded bar, construction bars and C1 seismic loads.



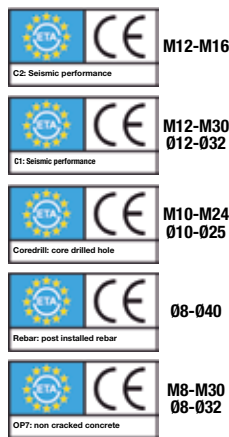
TECHNICAL DATA:

Suitable substrates: all solid and perforated substrates such as concrete and concrete derivatives, brickwork, mixed masonry, wood and rock.
Recommended penetration technique: drill, hammer drill.
Condition of hole for application: clean, dry, damp, wet or immersed underwater.
Workability time at +20°C: 30 mins.
Final hardening time at +20°C: 10 h (dry substrate), 20 h (wet substrate).
Certified bar diameter: from M8 to M30; from Ø8 to Ø32.
Certification: CE marking; ETA option 1 (anchors in tension and compressed zones); ETA option 7 (fasteners in compressive side); ETA Seismic performance C1; ETA option REBAR; fire resistance.
Application: extrusion gun.
Packaging: 300 ml, 420 ml.
Storage: 12 months (300 ml) or 18 months (420 ml) at +5°C - +25°C.



Mapefix EP 585

Pure epoxy, resin-based chemical anchor for structural loads. Certified for threaded bar, construction bars, core-drilled holes and C2 seismic loads.



TECHNICAL DATA:

Suitable substrates: all solid and perforated substrates such as concrete and concrete derivatives, brickwork, mixed masonry, wood and rock.
Recommended penetration technique: drill, hammer drill, core drilling, diamond-tipped tools.
Condition of hole for application: clean, dry, damp or wet.
Workability time at +20°C: 50 mins.
Final hardening time at +20°C: 16 h (dry substrate).
Certified bar diameter: from M8 to M30; from Ø8 to Ø32.
Certification: CE marking; ETA option 1 (anchors in tension and compressed zones); ETA option 7 (fasteners in compressive side); ETA Seismic performance C2; ETA option REBAR.
Application: extrusion gun.
Packaging: 585 ml.
Storage: 24 months at +5°C - +25°C.

1.8 Repair and Levelling Screeds



Mapecem Pronto

Pre-blended, ready-to-use, quick-setting and drying (24 hours), controlled-shrinkage mortar for screeds.



TECHNICAL DATA:

Mixing ratio: 1 x 25 kg bags of MAPECEM PRONTO with approximately 2.2 litres of water.
Workability time: 20-30 minutes.
Set to light foot traffic: after 2-3 hours.
Waiting time before laying:
 - 3 hours for ceramic tiles and stone material;
 - 24 hours for resilient and wood coverings.
Residual humidity after 24 h: less than 2%.
EMICODE: EC1 Plus - very low emission.
Storage: 12 months.
Application: tapping and flattening with a straight edge.
Consumption: 20 kg/m² per cm of thickness.
Packaging: 25 kg bags.



Planex HR

Rapid-drying, moisture-resistant, self-levelling smoothing compound for layers from 1 to 10 mm thick. Suitable for internal and external applications. Particularly recommended for use in areas where high resistance to static and dynamic loads is required. Suitable for substrates that are not completely dry or which have a high level of residual moisture.



TECHNICAL DATA:

Where to use: internal and external floors and walls for ceramic, natural stone, resilient and wooden coverings.
Workability time: 20-30 minutes.
Thickness applied: from 0 to 10 mm.
Set to light foot traffic: approx. 3 hours.
Waiting time before laying: 24-48 hours for ceramic tiles and natural stone, 12 hours for resilient coverings.
EMICODE: EC1 Plus - very low emission.
Colour: grey.
Storage: 12 months.
Application: rake, trowel or pump.
Consumption: 1.7 kg/m² per mm of thickness.
Packaging: 25 kg bags.



Topcem

Special normal-setting, quick-drying (4 days), controlled-shrinkage hydraulic binder for screeds.



TECHNICAL DATA:

Recommended mixing ratio: 200-250 kg of TOPCEM with 1 m³ of aggregates (diameter from 0 to 8 mm) and 110-130 kg of water for dry aggregates.
Workability time: 40-60 minutes.
Set to light foot traffic: after 12 hours.
Waiting time before laying: 24 hours for ceramic tiles, 2 days for natural stone and 4 days for resilient and wood coverings.
Residual humidity after 4 days: less than 2%.
EMICODE: EC1 Plus - very low emission.
Storage: 12 months.
Application: tapping and flattening with a straight edge.
Consumption: 2-2.5 kg/m² per cm of thickness.
Packaging: 20 kg bags



Topcem Pronto

Ready-to-use, normal-setting, controlled-shrinkage mortar with high thermal efficiency for quick-drying (4 days) screeds.



TECHNICAL DATA:

Mixing ratio: 1 x 25 kg bags of TOPCEM PRONTO with 1.7 litres of water.
Workability time: 60 minutes.
Set to light foot traffic: after 12 hours.
Waiting time before laying: 24 hours for ceramic tiles, 2 days for natural stone and 4 days for resilient and wood coverings.
Residual humidity after 4 days: less than 2%.
EMICODE: EC1 Plus - very low emission.
Storage: 12 months.
Application: tapping and flattening with a straight edge.
Consumption: 18-20 kg/m² per cm of thickness according to the grade of compacting.
Thermal efficiency: λ = 2,008 W/mK.
Packaging: 25 kg paper bags.



Ultraplan Contract

Self-levelling, ultra quick-hardening smoothing compound for thicknesses from 1 to 10 mm, with a very low emission of volatile organic compounds.



THECNICAL DATA:

Where to use: internal floors and walls, for ceramic, natural stone, resilient and wooden coatings.
Workability time: 20-30 min.
thickness applied: da 1 a 10 mm.
Set to light foot traffic: approx. 3 hours.
Waiting time before laying: 3-4 hours for stable and not sensitive to moisture ceramic and natural stone, 12 hours for resilient and wood coverings.
Colour: gray.
Storage: 12 months.
Application: trowel, rake or pump.
Consumption: 1.7 kg m² per mm of thickness.
Packaging: 25 kg bags.



Ultraplan Eco 20

Rapid hydrating, fast-drying self-levelling compound.

TECHNICAL DATA:

Consistency: fine powder.
Colour: pink.
Mixing ratio: 24-25 parts water per 100 parts by weight of ULTRAPLAN ECO 20.
Thickness per coat: from 1 to 10 mm.
Self-levelling: yes
Pot Life: 20 - 30 minutes.
Setting time: 45 - 60 minutes.
Set to light foot traffic: 3 hours.
Storage: 12 months.
Consumption: 1.6 kg/m² per mm of thickness.
Packaging: 20 kg paper bags.



Ultraplan Maxi

Self-levelling, ultra quick-hardening smoothing compound for thicknesses from 3 to 40 mm.



TECHNICAL DATA:

Where to use: internal floors for ceramic, natural stone, resilient and wooden coatings.

Workability time: 30-40 minutes.

Thickness applied: from 3 to 40 mm.

Set to light foot traffic: approx. 3 hours.

Waiting time before laying: from 12 to 24 hours for ceramic tiles and natural stone, from 24 to 72 hours for resilient and wood coverings (according to thickness).

Application: trowel or pump.

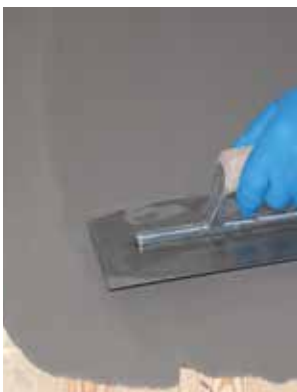
EMICODE: EC1 Plus - very low emission.

Colour: grey.

Storage: 12 months.

Consumption: 1.7 kg/m² per mm of thickness.

Packaging: 25 kg bags.



Ultraplan Renovation

Self-levelling fibre-reinforced rapid-hardening smoothing compound applied in layers 3 to 40 mm thick. Particularly suitable for levelling off existing substrates, even wooden substrates.



TECHNICAL DATA:

Areas of use: internal floors for installing ceramic, stone, resilient and wooden flooring.

Workability time: 30-40 minutes.

Thickness applied: 3 to 40 mm.

Set to foot traffic: approx. 3-12 hours (depending on thickness).

Waiting time before installation: from 3-4 to 12 hours for ceramic and stone and not sensitive to moisture stone; from 12 to 72 hours for resilients and wood (depending on thickness).

Application: spreader or pump.

EMICODE: EC1 Plus - very low emission.

Colour: grey.

Storage: 12 months.

Consumption: 1.8 kg/m² per mm of thickness.

Packaging: 25 kg bags.

1.9 Bonding Promoters/Primers



Eco Prim Grip Plus

Ready-to-use bonding promoter and primer made from synthetic acrylic resin and silica inerts with a very low emission level of volatile organic compounds (VOC) for render, smoothing and levelling compounds and adhesives for ceramic tiles.



TECHNICAL DATA:

Consistency: creamy liquid.

Colour: grey.

Waiting time before applying render: 15-20 minutes.

Waiting time before applying smoothing compounds: 30 minutes.

EMICODE: EC1 Plus - very low emission.

Storage: 12 months.

Application: roller or brush.

Consumption: 0.20-0.30 kg/m².

Packaging: 10 kg and 5 kg drums.



Planicrete

Synthetic rubber latex to improve adhesion and performances of cement mixes and prepare bonding slurries for screeds.

TECHNICAL DATA:

Consistency: fluid liquid.

Dry solids content: 36%.

Storage: 24 months.

Consumption:

– for adhesive slurry: 100-150 g/m²;

– to prepare screeds and render: 50-80 kg/m³.

Packaging: 5, 10 and 25 kg tanks and 12x1 kg packages.



Planicrete SP

Multipurpose latex additive for mortar and cementitious adhesives.

TECHNICAL DATA:

Consistency: Fluid liquid

Dry Solids content: 16%

Storage: 12 months in unopened original packaging

Consumption:

- As slurry bond / splatter-dash coat: 0,3kg per m²

- As floor and wall screed: 1kg per m² of 20mm thickness

Packaging: 25kg and 200kg drums.



Primer G

Synthetic resin primer in water dispersion with a very low content of volatile organic compounds (VOC).



TECHNICAL DATA:

Consistency: liquid.

Colour: blue.

Dilution rate: from 1:1 to 1: 3 with water according to the absorption of the substrate.

Drying time: 2 hours according to the dilution rate and the absorption of the substrate.

Application: brush.

EMICODE: EC1 Plus - very low emission.

Storage: 24 months. Protect from frost.

Consumption: 0.1-0.2 kg/m² according to use.

Packaging: 5, 10 and 25 kg drums and 12x1 kg boxes.



Primer Grip White

Multi-purpose, ready-to-use, synthetic resin-based bonding promoter in water dispersion with silica aggregates and very low emission of volatile organic compounds (VOC). For internal floors and walls. Suitable for improving the adhesion of the adhesives on non-absorbent surfaces and for the adhesion of self-levelling compounds.



TECHNICAL DATA:

Consistency: creamy liquid.

Colour: white.

Application: roller or brush.

Consumption: 0.2 and 0.3 kg/m², depending on the absorbency of the substrate.

Storage: 12 months in a dry area in its original, sealed packaging at a temperature of +5°C to +35°C.

Packaging: 10 kg drums.

1.10 Soundproofing



Mapesilent Band R

Closed-cell, expanded polyethylene adhesive band applied to perimeter walls and around the edges of elements which pass through screeds to avoid the formation of acoustic bridges.

TECHNICAL DATA:

Thickness: 5 mm.

Width at base: 50 mm.

Height: 100 mm / 160 mm.

Length: 50 m.

Packaging: cellophane package with 4 rolls 50 m long.



Mapesilent Comfort

Dry soundproofing system for floating screeds made from high density, closed-cell foam polyethylene sandwiched to a special protective film.

TECHNICAL DATA:

Thickness: 6 mm.
Compressibility (reduction in thickness when under load for a period of time): < 8%.
Thermal conductivity - λ : 0.04 W/mK.
Water vapour diffusion resistance factor - μ : > 2000.
Dynamic stiffness for calculation purposes (S'): 50 MN/m³.
Calculated reductions of impact noise from footsteps (ΔL_w): 23,5 dB.
Calculated noise level index of impact noise from footsteps ($L'n,w$): 58 dB (*).
Measured noise level index of impact noise from footsteps ($L'n,w$): 57 dB (*).

^(*) calculations and testing carried out on a 20+4 cm thick brick/cement floor slab, a 10 cm levelling layer over the system, a 5 cm thick cementitious screed and ceramic flooring.



Mapesilent Panel

Tiles with a bitumen and special polymer-based elasto-plastomeric membrane with polyester reinforcement, sandwiched to a resilient layer of polyester fibre.

TECHNICAL DATA:

Tensile strength:
 – longitudinal: 700 N/50 mm;
 – transversal: 500 N/50 mm.
Impact strength: 900 mm.
Resistance to static perforation: 15 kg.
Impermeability to water: > 100 KPa.
Reaction to fire: F.
Apparent dynamic stiffness ($S't$): 10 MN/m³.
Dynamic stiffness for calculation purposes (S'): 21 MN/m³.
Reduction of noise from footsteps when installed (ΔL_w): 42 dB.
Reduction of noise caused by footsteps under laboratory conditions ($\Delta L_w^{(*)}$): 24 dB.
Thermal resistance (R): 0.313 m²K/W.
Nominal thickness: 13 mm.
Format: 1000 mm x 1000 mm tiles.
Weight: 5 kg/m².
Packaging: pallets containing 75 m².

^(*) Measured in an independent laboratory on a 14 cm thick normalised reinforced concrete floor with a surface area of 10 m² and an upper acoustic chamber (according to UNI EN ISO 140-8).



Mapesilent Roll

Sheets with a bitumen and special polymer-based elasto-plastomeric membrane with polyester reinforcement sandwiched to a layer of resilient polyester fibre coated with blue, non-woven polypropylene fabric with a 5 cm wide self-adhesive border along the sides.

TECHNICAL DATA:

Tensile strength:
 – longitudinal: 700 N/50 mm.
 – transversal: 500 N/50 mm.
Impact strength: 900 mm.
Resistance to static perforation: 15 kg.
Impermeability to water: > 100 KPa.
Reaction to fire: F.
Apparent dynamic stiffness ($S't$): 15 MN/m³.
Dynamic stiffness for calculation purposes (S'): 47 MN/m³.
Reduction of noise from footsteps when installed (ΔL_w): 37 dB.
Reduction of noise caused by footsteps under laboratory conditions ($\Delta L_w^{(*)}$): 21 dB.
Thermal resistance (R): 0.145 m²K/W.
Nominal thickness: 8 mm.
Format: 10 x 1 m rolls with a 5 cm border along the sides.
Weight: 1.8 kg/m².
Packaging: pallets containing 160 m².

^(*) Measured in an independent laboratory on a 14 cm thick normalised reinforced concrete floor with a surface area of 10 m² and an upper acoustic chamber (according to EN ISO 140-8).



Mapesilent Tape

Adhesive sealing tape made in closed-cell expanded polyethylene.

TECHNICAL DATA:

Thickness: 3 mm.
Width: 100 mm.
Length: 25 m.
Packaging: boxes containing 12 rolls 25 m long.



Mapesonic CR

Soundproofing mat in sheets of rubber and cork applied on substrates before installing ceramic, stone, resilient and multi-layered wooden floors.



TECHNICAL DATA:

Thickness: 2 mm and 4 mm.

Format:

- 30 x 1 m sheets (2 mm thick);
- 20 x 1 m sheets (4 mm thick).

Reduction of noise from footsteps

EN ISO 140-8: 10 dB.

Density (kg/m³): 700.

Colours: brown-black.

Tensile strength EN ISO 1798 (N/mm²): 0.6.

Elongation at failure EN ISO 1798 (%): 20.

Reduction of noise from footsteps

EN ISO 140-8: 10 dB.

Certified: Technical Report N. PX21361-1.

EMICODE: EC1 Plus - very low emission.



Mapesonic GD 4 LVT

Acoustic underlayment for LVT.



TECHNICAL DATA:

Thickness: 1.5 mm.

Size: 10 m x 1 m sheets.

Weight: 1.1 kg/m².

Dimensional stability (ISO 23999): <0.2%.

Reduction of noise from footsteps (ISO 101401-1): 16 dB (for 2.5 mm thick LVT).

EMICODE: EC1 Plus - very low emission.



Mapesonic SA 4 LVT

Self-adhesive acoustic underlayment for LVT.



TECHNICAL DATA:

Thickness: 1.7 mm.

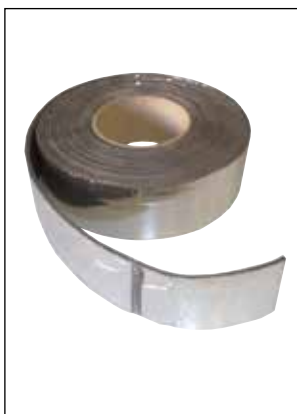
Size: 10 m x 1 m sheets.

Weight: 1.1 kg/m².

Dimensional stability (ISO 23999): <0.2%.

Reduction of noise from footsteps (ISO 101401-1): 16 dB (for 2.5 mm thick LVT).

EMICODE: EC1 Plus - very low emission.



Mapesonic Strip

Self-adhesive perimeter strip positioned around the edge of flooring and any pillars passing through the flooring to prevent the formation of acoustic bridges, specific for use with MAPESONIC CR.

TECHNICAL DATA:

Thickness: 3 mm.

Width: 5 cm.

Length: 11 m.

Packaging: boxes of 11 m 4 rolls.



PRESENTS

SOLUTIONS FOR SWIMMING POOLS



1 Primer 3296
Primer

2 Mapelastec Smart
Waterproofing Mortar

3 Mapenet 150
Reinforcing Mesh

5 Kerapoxy CQ
Epoxy Grout

4 Adesilex P9
Tile Adhesive

6 Mapeband Easy
Bandage

MAPEI offers a wide range of specific and durable waterproofing solutions for the construction and renovation of swimming pools.

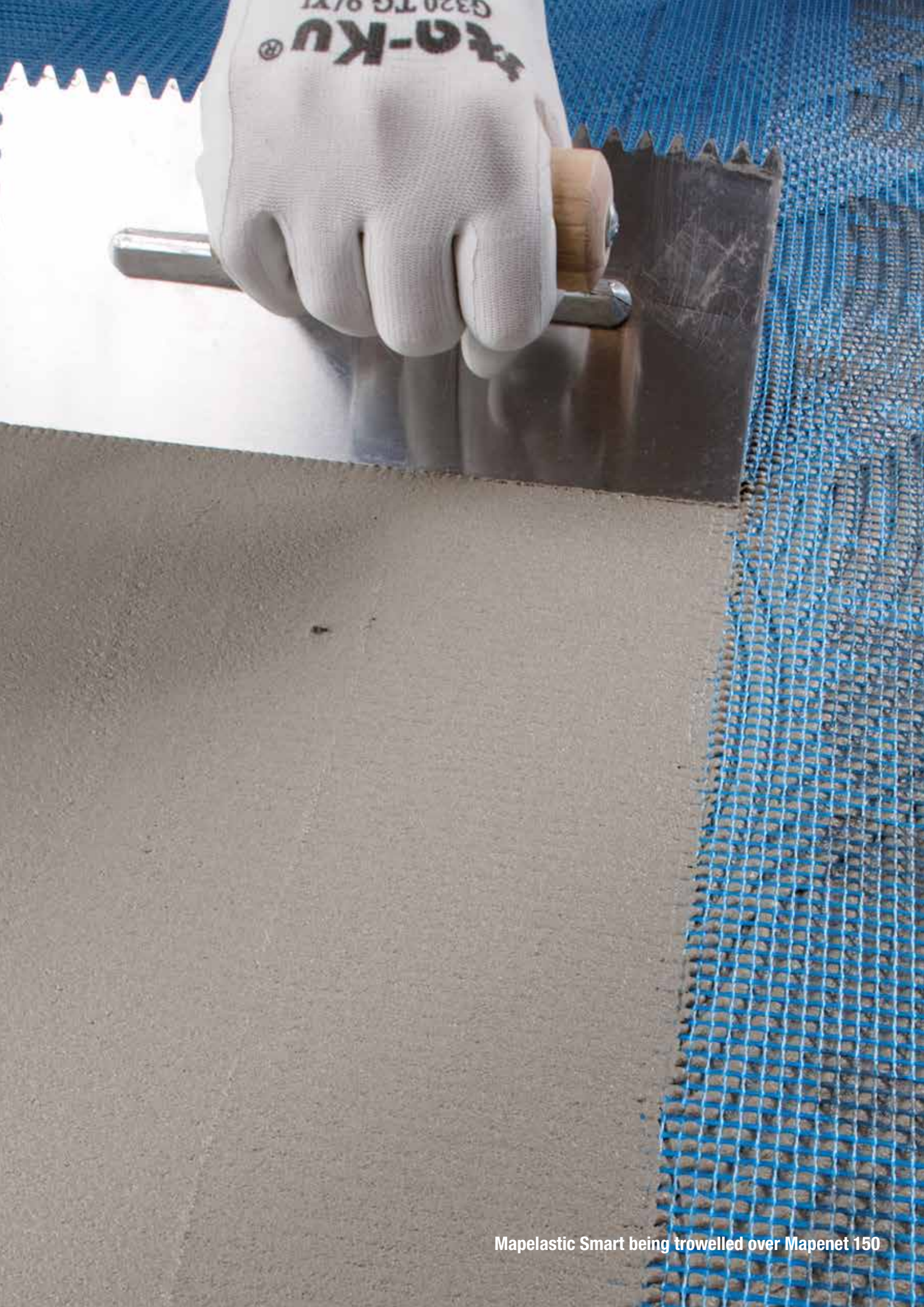
These solutions include technologically advanced product systems that are compatible with each other and meet the applicable technical and aesthetic requirements.

MAPEI products are indispensable in the construction industry as they are accompanied by technical solutions and comprehensive advice, making MAPEI your trusted partner in construction.



ADHESIVES · SEALANTS · CHEMICAL PRODUCTS FOR BUILDING





Mapelastic Smart being trowelled over Mapenet 150

PRODUCTS FOR WATERPROOFING



2. PRODUCTS FOR WATERPROOFING

2.1 Cementitious Waterproofing



Mapelastic

Two-component, flexible cementitious mortar for waterproofing balconies, terraces, bathrooms and swimming pools.



TECHNICAL DATA:

Consistency of mix: plastic-trowable.
Mixing ratio: comp. A: comp. B = 3 : 1.
Pot life of mix: approximately 1 hour.
Application temperature range: from +5°C to +35°C.
Minimum applicable thickness: 2 mm in 2 coats.
Classification: EN 1504-2 - coating (C) principles PI, MC and IR and EN 14891 norm.
EMICODE: EC1 Plus - very low emission.
Storage: 12 months comp. A, 24 months comp. B.
Application: trowel or by spray.
Consumption:
 – trowel: 1.7 kg/m² per mm of thickness;
 – spray: 2.2 kg/m² per mm of thickness.
Packaging:
 – 32 kg units: 24 kg bags + 8 kg drums;
 – 16 kg units: 2x6 kg sachets + 4 kg drums.



Mapelastic Foundation

Two-component, flexible cementitious mortar for waterproofing concrete surfaces subject to negative and positive hydraulic lift.



TECHNICAL DATA:

Consistency: thixotropic.
Mixing ratio: comp. A: comp. B = 2.2 : 1.
Pot life of mix: approximately 1 hour (at +20°C).
Application temperature range: from +5°C to +40°C.
Minimum applicable thickness: 2 mm in 2 coats.
Classification: EN 1504-2 - coating (C) principles PI, MC and IR and EN 14891 norm.
EMICODE: EC1 Plus - very low emission.
Storage: 12 months comp. A, 24 months comp. B.
Application: roller or spray.
Consumption:
 – by roller: 1.65 kg/m² per mm of thickness;
 – by spray: 2.2 kg/m² per mm of thickness.
Packaging:
 32 kg kits:
 – component A: 22 kg bags;
 – component B: 10 kg drums.



Mapelastic Smart

Two-component, high-flexibility cementitious mortar (with crack-bridging > 2 mm when reinforced with **Mapenet 150** or **Mapetex Sel**), applied by trowel or with a roller, for waterproofing balconies, terraces, bathrooms and swimming pools.



TECHNICAL DATA:

Consistency of mix: fluid-brushable.
Mixing ratio: comp. A: comp. B = 2 : 1.
Pot life of mix: approximately 1 hour.
Application temperature range: from +5°C to +40°C.
Minimum applicable thickness: 2 mm in 2 coats.
Classification: EN 1504-2 - coating (C) principles PI, MC and IR and EN 14891 norm.
EMICODE: EC1 Plus - very low emission.
Storage: 12 months comp. A, 24 months comp. B.
Application: brush, roller or spray.
Consumption:
 – trowel or roller: 1.6 kg/m² per mm of thickness;
 – spray: 2.2 kg/m² per mm of thickness.
Packaging: 30 kg units: 20 kg bags + 10 kg drums.



Planiseal 88

Single component osmotic cementitious mortar suitable for contact with drinking water, for waterproofing masonry and concrete structures (non-flexible).



TECHNICAL DATA:

Consistency: powder.
Pot life of mix: approx. 1 h.
Classification: EN 1504-2.
Storage: 12 months.
Consumption: 1.5 kg/m² per mm of thickness.
Packaging: 25 kg bags.



Planiseal 288

Two-component ductile cementitious mortar for waterproofing structures below ground level and storage tanks.



TECHNICAL DATA:

Consistency: fluid; applicable by brush.
Mixing ratio: comp. A : comp. B = 4 : 1.
Pot life of mix: approx. 1 h (at +20°C).
Application temperature: +5°C to +35°C.
Minimum applicable thickness: 2 mm in 2 coats.
Classification: EN 1504-2 - coating (C) principles MC and IR.
Storage: comp. A 12 months, comp. B 24 months.
Application: spreader, brush or roller.
Consumption: approx. 1.9 kg/m² per mm of thickness.
Packaging: 25 kg unit:
 – component A: 20 kg bag;
 – component B: 5 kg drum.

2.2 Emulsion Base Waterproofing



Plastimul DPC

Bitumen waterproofing emulsion for general purpose use.



TECHNICAL DATA:

Consistency: liquid.
Density: 1.1 g/cm³.
Dry solids content: approx. 40%.
Storage: 12 months.
Minimum application temperature: +5°C.
Consumption: approx. 2-4 m² per liter.
Packaging: 20 l drums. 200 l drums available on request.

2.3 Synthetic Waterproofing



Mapelastic AquaDefense

Ready-to-use, ultra quick-drying, flexible liquid membrane for waterproofing internal and external surfaces.



TECHNICAL DATA:

Consistency: paste.
Application temperature range: from +5°C to +35°C at +23°C and 50% R.H..
Waiting time between first and second coat: approximately 1 hour (at +23°C and 50% R.H.).
Waiting time before laying coating: 3-4 hours (at +23°C and 50% R.H.). Times refer to +23°C and 50% relative humidity of the air when the product is applied on dried screeds with a residual moisture lower than 3%.
Minimum applicable thickness: 0.8 mm in 2 coats.
Storage: 24 months.
Application: roller or brush.
Consumption: ±0,7 kg/m² in two coats.
Packaging: 3.5 kg and 15 kg drums.

2.4 Water Repellents



Antipluvio W

Transparent, silane and siloxane water-repellent impregnator in watery solution (available on request).



TECHNICAL DATA:

Consistency: fluid liquid.
Colour: milky.
Density (EN ISO 2811-1) (g/cm³): approx. 1.01.
Active substance content (%): 8.
Dilution rate: supplied ready to use.
Surface drying time: 1-2 hours.
Application temperature range: from +5°C to +35°C.
Cleaning: water.
Storage: 24 months.
Application: roller, brush or spray.
Consumption: 0.2-1 kg/m² (according to the porosity of the substrate).
Packaging: 10 kg.

2.5 PU Waterproofing Coatings



Mapecoat PU 20 N

Two-component coloured aliphatic polyurethane topcoat for membranes from the PURTOP polyurea range.

TECHNICAL DATA:

Consistency: liquid.
Colour: according to RAL colour available.
Mixing ratio A/B (by weight): 4.3:0.7.
Pot life of the mix: 60 minutes at +23°C.
Consumption: approx. 0.15-0.2 kg/m².
Storage: 12 months.
Packaging:
– 20 kg kit, comp. A 17.2 kg and comp. B 2.8 kg;



Mapefloor PU 400 LV

Two-component, self-levelling, neutral-coloured, highly flexible polyurethane waterproofer with fillers for external parking spaces.

TECHNICAL DATA:

Mixing ratio: comp. A : comp. B = 40 : 60.
Colour of mix: beige - grey.
Consistency of mix: self-levelling paste.
Pot life at +23°C: 20 minutes.
Dusty dry: 6 hours.
Set to light foot traffic: 8 hours.
Final hardening time: 16 hours.
Elongation (DIN 53504): approx. 750%.
Shore A hardness after 7 days: 55.
Storage: 12 months in its original sealed packaging.
Application: notched trowel.
Consumption: from 1.5 to 2 kg/m² according to the condition of the substrate.
Packaging: 20 kg kits (A + B).



Mapefloor PU 410

Two-component, self-levelling, neutral-coloured, fillerised flexible polyurethane waterproofer for internal parking spaces.

TECHNICAL DATA:

Mixing ratio: comp. A : comp. B = 16 : 3.9.
Colour of mix: neutral.
Consistency of mix: fluid.
Pot life at +20°C: 30 minutes.
Dusty dry: 2-4 hours.
Set to light foot traffic: 24 hours.
Final hardening time: 7 days.
Elongation (DIN 53504): approx. 112%.
Shore A hardness after 7 days: 90.
Storage: 12 months in its original sealed packaging.
Application: smooth or notched trowel.
Consumption: as an intermediate layer in the MAPEFLOOR PARKING SYSTEM HE: MAPEFLOOR PU 410 + MAPECOLOR PASTE: 1.0 kg/m².
Packaging: 19.9 kg kits (A + B).



Purtop 400 M

Two-component, solvent-free, spray applied, HYBRID polyurea membrane applied in situ using a high-pressure, bi-mixer type pump to form trafficable waterproof coatings on bridge decks and flat roofs.



TECHNICAL DATA:

A/B ratio (by volume): 100/100.
Classification: EN 1504-2.
Application: by spray with a high-pressure bi-mixer pump.
Consumption: 2.2 kg/m² per 2 mm of thickness.
Packaging:
– component A: 220 kg drums;
– component B: 225 kg drums.



Purtop 1000

Two-component, solvent-free, PURE polyurea membrane applied by spray with a high-pressure, bi-mixer type pump, to form waterproof coatings directly on site.



TECHNICAL DATA:

A/B ratio (by volume): 100/100.

Classification: EN 1504-2.

Application: by spray with a high-pressure bi-mixer pump.

Consumption: 2.2 kg/m² per 2 mm of thickness.

Packaging:

- component A: 220 kg drums;

- component B: 225 kg drums.

2.6 Primers/Bonding Promoters



Idroprimer

IDROPRIMER is a bituminous water based primer containing selected bitumen. Compared to the common solvents-based primers, IDROPRIMER has the advantage of not being flammable and odorless.

TECHNICAL DATA:

Appearance: liquid

Colour: brown

Ph at 20 °c: 8 - 11

Specific weight at

20 °C - en iso 2811-1: 1,02 (±0,03) kg/l

Dry solid contents at

130 °C - en iso 3251: 32 - 36%

Viscosity din 4 at

20 °C - en iso 2431: 18'' - 26''

Flammability: not flammable

Drying time 20 °c: 4 - 6 hours

Consumption related to the support : 200-300 g/m²

Shelf life in the original buckets: 12 months

Packaging: 20 kg drums & 5 kg buckets.



Polyprimer

POLYPRIMER is a bituminous solvent primer containing oxidized bitumen and a mix of technical quick drying solvents.

TECHNICAL DATA:

Appearance: liquid

Colour: black

Ph at 20 °c: neutral

Specific weight at 20 °c

en iso 2811-1: 0,93 (±0,03) kg/l

Dry solid contents at 130 °c

en iso 3251: 38 - 42%

Frass breaking point of

oxidized bitumen: -10 °c

Bitumen softening point: 90 - 100 °c

Penetration dow with

bitumen at 25 °c: 10 - 20 dmm

Minimum application temperature: +5 °c

Viscosity din 4 at 20 °c En iso 2431: 12 - 15''

Flash point in closed bucket: <23 °c

Flammability : >200 °c

Drying time at 20 °c: 2 - 4 hours

Consumption related to the support: 200 - 350 gr/m²

Shelf life in the original buckets: 24 months

Packaging: 20 kg drums & 5 kg buckets.



Mapecoat I 600 W

Two-component transparent epoxy primer in water dispersion for use with AQUAFLEX ROOF PREMIUM.

TECHNICAL DATA:

Consistency of mix: fluid.

Colour of mix: opaline.

Mixing ratio: comp. A: comp. B = 2.3 : 3.6.

Workability time: 2-3 hours.

Dust dry at +23°C and 50% R.H.: 3-4 hours (first coat); 6-8 hours (second coat).

Final hardening time: 7 days.

Application temperature range: from +8°C to +35°C.

Storage: 24 months in its original sealed packaging.

Application: roller, spray or airless spray.

Consumption: 0.15-0.25 kg/m², depending on the absorbency rate of diluted product.

Packaging: 5.9 kg kits and 11.8 kg kits (A + B).



Primer 3296

Acrylic primer in water dispersion with high penetration, consolidating and anti-dust properties for screeds

TECHNICAL DATA:

Consistency: liquid.

Colour: opaline.

Dilution ratio: as is, 1: 1 or 1:2 according to the absorption of the substrate.

Drying time: 1-5 days.

Waiting time before laying with vinyl adhesive: when dry.

Storage: 12 months.

Application: brush, roller or watering can.

Consumption: 0.1-0.5 kg/m².

Packaging: 5 and 10 kg drums.



Primer M

One-component solvent-free primer for overcoating polyurea sprays over each other.

TECHNICAL DATA:

Application of sealant: after 40 minutes.

Colour: brown.

Consumption: 5 - 10 g/m (1 cm - deep joint).

Packaging: 250 g bottles.



Primer SN

Two-component epoxy primer with fillers.



TECHNICAL DATA:

Mixing ratio: component A : component B = 80 : 20.

Colour of mix: neutral.

Consistency of the mix: viscous fluid.

Density of mix (kg/m³): 1500.

Viscosity of the mix (mPa·s): 1,100 ± 100 (# 3 - rpm 50).

Pot life: 30 min.

Application temperature range: from +8°C to +35°C.

Dust dry at +23°C and 50% R.H.: 6 hours.

Set to light foot traffic at +23°C and 50% R.H.: 24 hours.

Final setting time: 7 days.

Storage: 24 months in its original sealed packaging.

Application: flat American trowel or smooth trowel.

Consumption: 0.3-0.7 kg/m² per coat, depending on the absorbency and characteristics of the substrate.

Packaging: 20 kg kits (A+B); 5 kg kits (A+B).



Triblock P

Three-component epoxy-cementitious primer for non-absorbent priming of damp substrates.

TECHNICAL DATA:

Consistency: comp. A liquid; comp. B liquid; comp. C powder.

Colours: comp. A white; comp. B white; comp. C white.

Mixing ratio:

comp. A : comp. B : comp. C = 12 : 38 : 50.

Workability time: 30-40 minutes.

Waiting time between first and second coat: 4-6 hours.

Waiting time before laying floors or applying smoothing compound: 18 hours.

Maximum waiting time before laying floors or applying smoothing compound: 7 days.

Storage: 24 months.

Application: brush or roller.

Consumption: 0.5 kg/m².

Packaging: 5 kg drums (A+B+C).

2.7 Bandage Systems



Adesilex PG4

Two-component, thixotropic epoxy adhesive with modified rheology for bonding MAPEBAND, MAPEBAND TPE, PVC strips and Hypalon and for structural bonds.



TECHNICAL DATA:

Mixing ratio: comp. A : comp. B = 3 : 1.
Pot life of mix: 70 minutes (at +23°C).
Minimum applicable thickness: 1-2 mm.
Maximum applicable thickness: 1 cm per layer.
Classification: EN 1504-4.
Storage: 24 months.
Application: trowel.
Consumption: 1.60-1.65 kg/m² per mm of thickness.
Packaging:
6 kg kits:
– 4.5 kg drums (comp. A);
– 1.5 kg drums (comp. B).



Mapeband

Alkali-resistant rubber tape with felt for cementitious waterproofing systems and liquid sheaths.



TECHNICAL DATA:

In service temperature range: from -30°C to +60°C.
EMICODE: EC1 Plus - very low emission.
Packaging:
– 120 mmx50 m rolls;
– 120 mmx10 m rolls;
– 90° and 270° angular pieces;
– gaskets for outlets, sizes 120x120 mm and 400x400 mm;
– special cross and T pieces.



Mapeband Easy

Rubber tape sandwiched between two layers of non-woven polypropylene fabric to form elastic joints in waterproofing systems.



TECHNICAL DATA:

Type of material: rubber sandwiched between two layers of non-woven polypropylene fabric.
Thickness: 0.68 mm.
Width: 130 mm.
Tensile strength: 45 N/15 mm.
Elongation at failure: 315 %.
EMICODE: EC1 Plus - very low emission.
Packaging:
– 30 m long.
– 10 m long.



Mapeband Flex Roll

Tape for the flexible waterproofing of expansion joint and cracks.



TECHNICAL DATA:

Material: TPE.
Width: 200 mm, 300 mm, 400 mm, 600 mm and 800 mm (other sizes available upon request).
EMICODE: EC1 Plus - very low emission.
Thickness: 2 mm.
Packaging: 20 m rolls.



Mapeband SA

Self-adhesive, waterproof butyl tape with alkali-resistant, non-woven fabric for elastic waterproofing systems.



TECHNICAL DATA:

Density: 1.6 g/cm³.
Temperature of application: from +5°C to +30°C.
Width: 100 mm.
Thickness: approx. 2 mm.
EMICODE: EC1 Plus - very low emission.
Packaging: 25 m rolls.



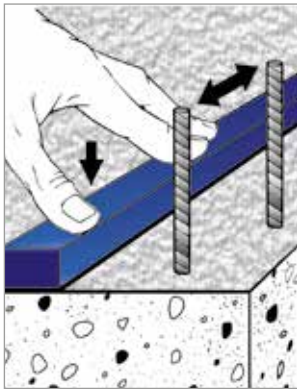
Mapeband TPE

TPE tape for flexible sealing and waterproofing of expansion joints and cracks subject to movement.

TECHNICAL DATA:

Sizes available:
 - 17 cm (MAPEBAND TPE 170);
 - 32.5 cm (MAPEBAND TPE 325).
Width of expanding zone:
 - MAPEBAND TPE 170: 50 mm;
 - MAPEBAND TPE 325: 165 mm.
Thickness: 1.2 mm.
Maximum elongation of expanding zone:
 - 5 mm (MAPEBAND TPE 170);
 - 10 mm (MAPEBAND TPE 325).
Packaging:
 - 30 m rolls (both 170 and 325 width versions);

2.8 Waterstops

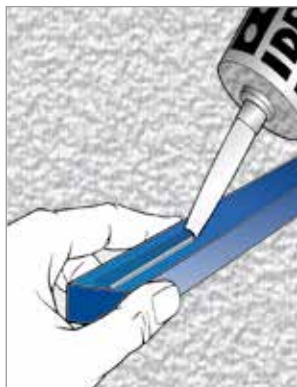


Idrostop

Hydrophilic, expanding rubber profiles for waterproof construction joints.

TECHNICAL DATA:

Shape: pre-formed tape.
Sizes available:
 20x10 mm (IDROSTOP 10);
 20x15 mm (IDROSTOP 15);
 20x25 mm (IDROSTOP 25).
Storage: 12 months.
Application temperature range using IDROSTOP MASTIC as an adhesive: from +10°C to +40°C.
Waiting time before casting if laying has been carried out using IDROSTOP MASTIC: 24 hours.
Waiting time before casting if fixed in place with nails or screws: not required.
Maximum width of joint: 7 mm.
Packaging:
 IDROSTOP 10: 6x10 m rolls;
 IDROSTOP 15: 6x7 m rolls;
 IDROSTOP 25: 6x5 m rolls.



Idrostop Mastic

One-component adhesive for laying IDROSTOP.



TECHNICAL DATA:

Consistency: thixotropic paste.
Dry solids content: 100%.
Storage: 18 months.
Application temperature range: from +5°C to +35°C.
Dust dry: 10 minutes.
Waiting time before casting: 24 hours.
Consumption: approximately 300 ml each 5 linear metres of IDROSTOP.
Packaging: boxes containing 12x300 ml cartridges.



Idrostop PVC BE

PVC waterstop with external lug for sealing structural joints.

TECHNICAL DATA:

Application: mechanically.

Packaging: IDROSTOP PVC BE is available in two sizes:

- IDROSTOP PVC BE20E (width 20 cm) in 15 m-long rolls;
- IDROSTOP PVC BE25C (width 25 cm) in 12 m-long rolls.



Idrostop PVC BI

PVC waterstop with internal lug for sealing structural joints.

TECHNICAL DATA:

Application: mechanically.

Packaging: IDROSTOP PVC BI is available in three sizes:

- IDROSTOP PVC BI20E (width 20 cm) in 15 m-long rolls;
- IDROSTOP PVC BI25E (width 25 cm) in 12 m-long rolls;
- IDROSTOP PVC BI25C (width 25 cm) in 12 m-long rolls.

2.9 Chemical Damp Course



Mapestop

Micro-emulsion, concentrated silane and siloxane used to form a chemical barrier against capillary rising damp in masonry.

TECHNICAL DATA:

Dimension of particles: 20-60 μm .

Mixing ratio in water: 1 : 15-19.

Silane/siloxane content: 100%.

Duration of solution: 24 hours.

Storage: 12 months.

Application: by gravity or suitable injection pump.

Consumption: according to the absorption of the masonry. Approximately 8-9 kg/m of solution for a 40 cm thick wall, corresponding to 0.4-0.6 kg of neat MAPESTOP.

Packaging: 1 kg metal can with spout.



Mapestop Diffusion Kit

Complete kit to create a slow-diffusion chemical barrier against capillary rising damp.

TECHNICAL DATA:

Packaging: cardboard box containing 8 of each of the following items:

- 1.5 litre diffuser in PE HD;
- galvanized support bracket;
- 100 cm long PVC tube (outside diameter 7 mm);
- \varnothing 12 mm injector;
- 50 cm long diffusing tube (outside diameter 11 mm);
- sealing plug.

2.10 Water Plugging



Lamposilex ZA

Ultra quick-setting and hardening hydraulic cement for blocking seeping water.

TECHNICAL DATA:

Consistency: fine powder.
Workability time at +20°C: approximately 1 minute.
Storage: 12 months.
Mixing ratio: 100 g of LAMPOSILEX with 28 g of water.
Minimum application temperature: +5°C.
Consumption: 1.8 kg/dm³ of cavities to be filled.
Packaging: 5 kg drums.



Mapeproof Swell

Extrudable, hydro-expansive, rubber-based hydrophilic sealant paste in tubes, applied using an extrusion gun.

TECHNICAL DATA:

Consistency: thixotropic paste.
Solubility: non-soluble in water.
Dry solids content: 90%.
Storage: 12 months.
Application temperature range: from +5°C to +40°C.
Volumetric expansion in water: minimum 100%.
Formation of skin: 180-200 min.
Polymerisation time: 2 mm every 9 hours.
Consumption: approximately 320 ml every 3 metres.
Shore A hardness (DIN 53505): 32.
Elongation (DIN 53504): > 700%.
Ultimate strength (DIN 53504): 2.5 N/mm².
Modulus of elasticity at 100% elongation (DIN 53504): 0.55 N/mm².
Tear strength (ISO 34-1): 10 N/mm.
Water-tightness: 1 atm.
Packaging: boxes containing 6 320 ml cartridges.

2.11 Waterproofing Misc.



Drain Front

TPE angular drain outlet pipe. To create water outlets on balconies.

TECHNICAL DATA:

Colour: ivory and copper.
Packaging: boxes of 5 pieces.



Drain Vertical/Drain Lateral

Outlet kit for installing floor drains, ideal for draining off water from terraces, balconies, bathrooms, boiler rooms, wash-rooms, etc.

TECHNICAL DATA:

Diameter: 50, 70 and 100 mm.
Packaging: 1 kg kits including:
– vertical or lateral polypropylene drain-pipe available in 3 diameters (50, 75 and 90 mm) for DRAIN LATERAL and 5 diameters (50-75-82-90-100 mm) for DRAIN VERTICAL, with a welded 400x400 mm polypropylene drain-cover;
– telescopic extension;
– “anti-odour” plug;
– removable stainless steel grate.



Mapetex 50

Non-woven polypropylene fabric (weight 50 g/m²) for reinforcing waterproof membranes, such as MAPELASTIC AQUADEFENSE or AQUAFLEX ROOF.

TECHNICAL DATA:

Weight (g/m²): 50.

Thickness (mm): 0.3.

Packaging: Available in 20cm x 25m rolls and 100cm x 25m rolls.



Mapenet 150

Alkali-resistant glass fibre mesh (in compliance with the ETAG 004 guide) for reinforcing protective waterproofing layers, anti-fracture membranes and thermal insulation systems.

TECHNICAL DATA:

Colour: blue.

Weight: 150 g/m² ± 5%.

Mesh size: 4x4.5 mm.

Storage: unlimited.

Packaging: 50 m x 1 m rolls.



Mapetex Sel

Macro-holed, non-woven polypropylene fabric for reinforcing waterproofing membranes.

TECHNICAL DATA:

Weight: 80 g/m².

Thickness: 0.6 mm.

Tensile strength: 5 KN/m.

Deformation at maximum strain:

– 90% in a longitudinal direction;

– 60% in a transversal direction.

Packaging: 25 m x 1 m rolls.



Polypaint ALU

Water-based bright silver protective paint for talc, sand and granulated membranes. It is also applied on bituminous torch-on membranes not protected.

TECHNICAL DATA:

Aspect: liquid

Colour: silver

Specific weight at 20 °c

norm en iso 2811-1: 1,05 (±0,03) kg/l

Solid contents at 130 °c Norm en iso 3251: 17%

Viscosity din 4 at 20 °c

norm en iso 2431: 17-23 seconds

Ph at 20 °c: 7-7,5

Drying time out of dust: about 30-60 minutes

Drying time in depth at 20 °c: about 2-3 hours

Flammability point in closed bucket: not flammable

Stability in original closed buckets: 12 months

Packaging: 20 kg drums & 5 kg buckets.

2.12 Waterproof Coatings



Aquaflex Roof

Ready-to-use, acrylic, flexible liquid membrane with fibres for continuous waterproofing layers on exposed external surfaces.



TECHNICAL DATA:

Consistency: paste.

Application temperature range: from +5°C to +35°C.

Waiting time between first and second coat: approximately 8-12 hours.

Set to light foot traffic: 12 hours at +23°C.

Minimum applicable thickness: 1 mm in 2 coats.

Colour: grey.

Storage: 24 months.

Application: roller, brush or trowel.

Consumption:

- waterproofing membrane: at least 2 kg/m²;
- protective finish on bituminous substrates:
 - approx. 0.5 kg/m² on smooth membranes
 - approx. 0.9 kg/m² on membranes with a slate-chip face.

Packaging: 20 kg drums.



Aquaflex Roof HR

Acrylic fibre-filled liquid membrane in water emulsion with high solar reflectance and thermal emittance with a solar reflectance index (SRI) of 105.



TECHNICAL DATA:

Consistency: paste.

Application temperature range: from +5°C to +35°C.

Waiting time between first and second coat: 8-12 hours.

Set to foot traffic: 12 hours at +23°C.

Colour: highly reflective white.

Storage: 24 months.

Application: roller, brush or trowel.

Consumption:

- waterproofing membrane: at least 2 kg/m²;
- protective finish on bituminous substrates:
 - approx. 0.5 kg/m² on smooth membranes
 - approx. 0.9 kg/m² on mineral-fined membranes.

Packaging: 20 kg drums.



Aquaflex Roof Premium

Ready-mixed, water-based, VOC-free polyurethane waterproof membrane resistant to foot traffic and standing water.



TECHNICAL DATA:

Consistency: paste.

Colour: high-reflectance white and RAL 7038 grey.

Density (g/cm³): 1.25.

Dry solids content (%): 60.

Application temperature: from +5°C to +35°C.

Consumption : protective finish or reflective coating on an old bitumen membrane: 0.9-1 kg/m²

Waterproof membrane: 1.5-2 kg/m².

Packaging: 20 kg drums.

2.13 Waterproofing Admixtures



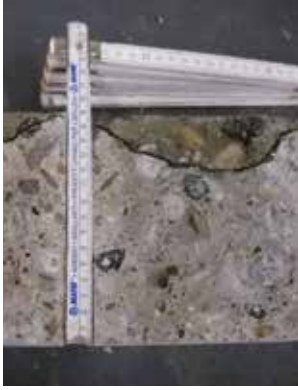
Idrocrete DM

Bulk water-repellent admixture. Particularly recommended for concrete with a damp earth consistency.

TECHNICAL DATA:

Dosage: from 0.2 to 0.6 kg every 100 kg of cement.

Packaging: 25 kg drums.



Idrocrete KR 1000

Powdered crystallising admixture to create waterproof concrete.

TECHNICAL DATA:

Dosage: 1 to 3 kg every 100 kg of cement.

Packaging: 20 kg bags and boxes of 4 x 4 kg water-soluble bags.



Idrosilex

Bulk powder or liquid admixture to create water-repellent mortars and plasters.

TECHNICAL DATA:

Consistency: powder or liquid.

Pot life of mix: approximately 1 hour.

Storage: 12 months.

Consumption:

- IDROSILEX LIQUID: 3-5 kg/m² every 100 kg of cement;
- IDROSILEX POWDER: 2-4 kg/m² every 100 kg of cement.

Packaging:

- IDROSILEX LIQUID: 12x1 kg boxes;
- IDROSILEX POWDER: boxes of 25x1 kg.



Mapeflex PU 45 FT being applied to seal a floor joint

SEALANTS



3. SEALANTS

3.1 Sealants



Mapeflex Blackfill

Bituminen sealant for bonding, repairing and fixing torch-on.

TECHNICAL DATA:

Movement in service: plastic product.

Dry solids content: 90%.

Elongation at failure: 65%.

Colours: black.

Application: extrusion gun, trowel.

Consumption: 3.0 linear metres per 300 ml cartridge (10x10 mm section).

Packaging: 300 ml cartridge.



Mapeflex PU 45 FT

Rapid-hardening paintable polyurethane sealant and adhesive with a high modulus of elasticity for movements up to 20%.

**TECHNICAL DATA:**

Movement in service: 20%.

Modulus of elasticity at 100% elongation: 0.70 N/mm².

Shore A hardness: 40.

Workability time: 35 mins.

Colours: white, 113 grey (cement grey) and black.

Application: 600 ml gun.

Consumption: 3.0 meters per 300 ml cartridge, 6.0 meters per 600 ml tube (10x10 mm section).

Packaging: 600 ml cartridges supplied in boxes of 20.



Mapeflex PU S25

General purpose, low modulus polyurethane sealant for joints for movements up to 25%.

TECHNICAL DATA:

Movement in service: 25%.

Modulus of elasticity at 100% elongation: 0.20 N/mm².

Shore A hardness: 20.

Colours: grey.

Application: manual or pneumatic 600 ml gun.

Consumption: according to the size of the joints.

Packaging: 600 ml soft-cartridges in boxes of 24.



Mapeflex PU 50 SL

Paintable, self-levelling polyurethane sealant with a low modulus of elasticity for movements up to 25%.

TECHNICAL DATA:

Movement in service: 25%.

Modulus of elasticity at 100% elongation: 0.25 N/mm².

Shore A hardness: 22.

Workability time: 2 hours.

Colour: 111 grey.

Application: by pouring with extrusion gun.

Consumption: 6.0 linear metres per 600 ml soft-cartridge (10x10 mm section).

Packaging: 600 ml soft-cartridges supplied in boxes of 20.



Mapeflex PU 65

Two-component, castable polyurethane sealant for sealing joints in roads up to surface level, mixed with QUARTZ 0.5 sand at a ratio of up to 1:1 by weight.



TECHNICAL DATA:

Shore A hardness: 80.
Workability time: 2-3 hours.
Colour: black.
Application: by pouring.
Consumption: 1.2 kg/linear metres (10x10 mm section).
Packaging: 10 kg drums (A+B)



Mapeflex PU 70 NS

Two-component, thixotropic, polyurethane sealant with low modulus of elasticity, resistant to hydrocarbons, for movements up to 25%.

TECHNICAL DATA:

Movement in service: 25%.
Modulus of elasticity at 100% elongation: 0.6 N/mm².
Shore A hardness: 30.
Workability time: 45 minutes.
Colour: black.
Application: spreader, extrusion gun.
Consumption: 0.15 kg/metre (10x10 mm section).
Packaging: 5 kg drums.
Customer order only.



Mapeflex PU 70 SL

Two-component free-flowing elastic polyurethane sealant with a low modulus of elasticity, for joints with movements up to 25% with low modulus of elasticity, resistant to hydrocarbons.

TECHNICAL DATA:

Movement in service: 25%.
Modulus of elasticity at 100% elongation: 0.30 N/mm².
Shore A hardness: 18.
Workability time: 45 mins.
Colours: black, grey.
Application: pouring, pressure pump.
Consumption: 0.15 kg/meter (10x10 mm section).
Packaging: 10 kg drums (A+B).
Customer order only.



MapePUR Universal Foam M

Multi-purpose expanding polyurethane foam for filling, soundproofing and insulating.

Available in gun version (MAPEPUR UNIVERSAL FOAM G) for use with a standard MAPEPUR GUN and hand-held spray can version (MAPEPUR UNIVERSAL FOAM M).

TECHNICAL DATA:

Free expansion: up to 45 litres.
Insulating capacity MAPEPUR UNIVERSAL FOAM G: 0.036 W/(m K).
Insulating capacity MAPEPUR UNIVERSAL FOAM M: 0.039 W/(m K).
Soundproofing capacity: 58 dB.
Full hardening time: 1.5/5 hours.
Colour: yellow.
Packaging: 750 ml spray can.



Mapesil AC

Pure, mould-resistant, acetic silicone sealant with BioBlock® technology for movements up to 25%.



TECHNICAL DATA:

Movement in service: 25%.

Modulus of elasticity at 100% elongation: 0.35 N/mm².

Shore A hardness: 20.

Workability time: 10 minutes.

Colours: 34 colours + transparent.

EMICODE: EC1 Plus - very low emission.

Application: extrusion gun.

Consumption: 3.1 linear metres per 310 ml cartridge (10x10 mm section).

Packaging: 310 ml cartridges.



Primer M

One-component solvent-free primer for polyurethane adhesives for non-absorbent surfaces.

TECHNICAL DATA:

Application of sealant: after 40 minutes.

Colour: brown.

Consumption: 5÷10 g/m (1 cm - deep joint).

Packaging: 250 g bottles.

3.2 Backing Cords for Joints



Mapefoam

Closed-cell, extruded foam polyethylene cord used as a support for elastomer sealants to gauge the correct size of flexible joints.

Supplied in hanks, total length proportional to the diameter.

TECHNICAL DATA:

Density: 40 kg/m³.

Tensile strength: 30 N/mm².

Water absorption: none.

Colour: grey.

In service temperature range: from -40°C to +80°C.

Packaging:

Ø 6 mm, boxes of 550 m - lengths of 100 m

Ø 10 mm, boxes of 550 m - lengths of 100 m

Ø 15 mm, boxes of 550 m - lengths of 100 m

Ø 20 mm, boxes of 350 m - lengths of 100 m

Ø 25 mm, boxes of 200 m - lengths of 100 m

Ø 30 mm, boxes of 160 m - lengths of 100 m

Ø 40 mm, boxes of 270 m - lengths of 100 m

HIGH-QUALITY TILE ADHESIVES

FOR INTERIOR & EXTERIOR APPLICATIONS



Adesilex P9 Tile Adhesives

Adesilex P9 is a range of high performance, polymer-modified cementitious tile adhesives from MAPEI, characterised by enhanced bond strength and extreme versatility for installing tiles on various internal substrates up to 1200 mm x 1200 mm, and external substrates up to 600 mm x 1200 mm.

This range of adhesives is ideal for floors that are subjected to high stresses and intense traffic. Set to light foot traffic after 12 hours, or speed up the setting time with the Fast Track® version in just 6 hours!

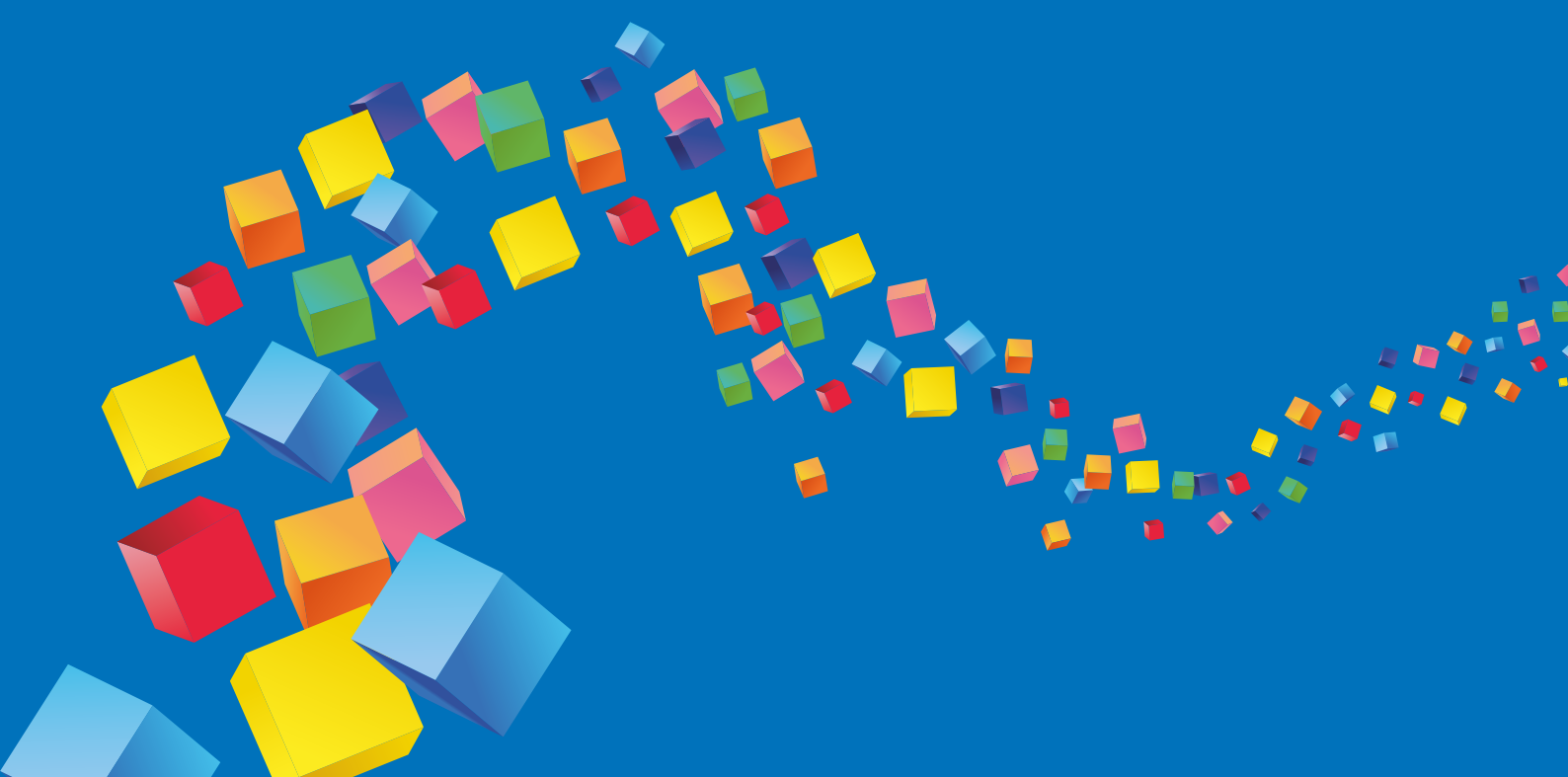
Learn more at mapei.co.za
 Tel: + 27 11 552 8476
 Email: info@mapei.co.za





Keraset-R being applied to wall for tiling

TILE ADHESIVES AND GROUTS



4. TILE ADHESIVES AND GROUTS

4.1 Screeds



Mapecem Pronto

Pre-blended, ready-to-use, quick-setting and drying (24 hours), controlled-shrinkage mortar for screeds.



TECHNICAL DATA:

Mixing ratio: 1 25 kg bag of MAPECEM PRONTO with approximately 2.2 litres of water.

Workability time: 20-30 minutes.

Set to light foot traffic: after 2-3 hours.

Waiting time before laying:

- 3 hours for ceramic tiles and stone material;
- 24 hours for resilient and wood coverings.

Residual humidity after 24 h.: less than 2%.

EMICODE: EC1 Plus - very low emission.

Storage: 12 months.

Application: tapping and flattening with a straight edge.

Consumption: 20 kg/m² per cm of thickness.

Packaging: 25 kg paper bags.



Topcem

Special normal-setting, quick-drying (4 days), controlled-shrinkage hydraulic binder for screeds.



TECHNICAL DATA:

Recommended mixing ratio: 200-250 kg of TOPCEM with 1 m³ of aggregates (diameter from 0 to 8 mm) and 110-130 kg of water for dry aggregates.

Workability time: 40-60 minutes.

Set to light foot traffic: after 12 hours.

Waiting time before laying: 24 hours for ceramic tiles, 2 days for natural stone and 4 days for resilient and wood coverings.

Residual humidity after 4 days: less than 2%.

EMICODE: EC1 Plus - very low emission.

Storage: 12 months.

Application: tapping and flattening with a straight edge.

Consumption: 2-2.5 kg/m² per cm of thickness.

Packaging: 20 kg bags



Topcem Pronto

Ready-to-use, normal-setting, controlled-shrinkage mortar with high thermal efficiency for quick-drying (4 days) screeds.



TECHNICAL DATA:

Mixing ratio: 1 25 kg bag of TOPCEM PRONTO with 1.7 litres of water.

Workability time: 60 minutes.

Set to light foot traffic: after 12 hours.

Waiting time before laying: 24 hours for ceramic tiles, 2 days for natural stone and 4 days for resilient and wood coverings.

Residual humidity after 4 days: less than 2%.

EMICODE: EC1 Plus - very low emission.

Storage: 12 months.

Application: tapping and flattening with a straight edge.

Consumption: 18-20 kg/m² per cm of thickness according to the grade of compacting.

Thermal efficiency: λ = 2,008 W/mK.

Packaging: 25 kg paper bags.

4.2 Self-levelling Screeds



Planex HR

Rapid-drying, moisture-resistant, self-levelling smoothing compound for layers from 1 to 10 mm thick. Suitable for internal and external applications. Particularly recommended for use in areas where high resistance to static and dynamic loads is required. Suitable for substrates that are not completely dry or which have a high level of residual moisture.



TECHNICAL DATA:

Where to use: internal and external floors and walls for ceramic, natural stone, resilient and wooden coverings.

Workability time: 20-30 minutes.

Thickness applied: from 0 to 10 mm.

Set to light foot traffic: approx. 3 hours.

Waiting time before laying: 24-48 hours for ceramic tiles and natural stone, 12 hours for resilient coverings.

EMICODE: EC1 Plus - very low emission.

Colour: grey.

Storage: 12 months.

Application: rake, trowel or pump.

Consumption: 1.7 kg/m² per mm of thickness.

Packaging: 25 kg bags.



Ultraplan Contract

Self-levelling, ultra quick-hardening smoothing compound for thicknesses from 1 to 10 mm, with a very low emission of volatile organic compounds.



TECHNICAL DATA:

Where to use: internal floors and walls, for ceramic, natural stone, resilient and wooden coatings.
Workability time: 20-30 min.
thickness applied: da 1 a 10 mm.
Set to light foot traffic: approx. 3 hours.
Waiting time before laying: 3-4 hours for stable and not sensitive to moisture ceramic and natural stone, 12 hours for resilient and wood coverings.
Colour: gray.
Storage: 12 months.
Application: trowel, rake or pump.
Consumption: 1.7 kg m² per mm of thickness.
Packaging: 25 kg bags.



Ultraplan Eco 20

Rapid hydrating, fast-drying self-levelling compound.

TECHNICAL DATA:

Consistency: fine powder.
Colour: pink.
Mixing ratio: 24-25 parts water per 100 parts by weight of ULTRAPLAN ECO 20.
Thickness per coat: from 1 to 10 mm.
Self-levelling: yes
Pot Life: 20 – 30 minutes.
Setting time: 45 – 60 minutes.
Set to light foot traffic: 3 hours.
Storage: 12 months.
Consumption: 1.6 kg/m² per mm of thickness.
Packaging: 20 kg paper bags.



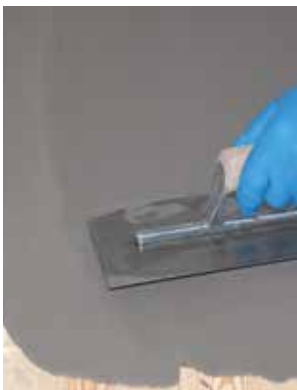
Ultraplan Maxi

Self-levelling, ultra quick-hardening smoothing compound for thicknesses from 3 to 40 mm.



TECHNICAL DATA:

Where to use: internal floors for ceramic, natural stone, resilient and wooden coatings.
Workability time: 30-40 minutes.
Thickness applied: from 3 to 40 mm.
Set to light foot traffic: approx. 3 hours.
Waiting time before laying: from 12 to 24 hours for ceramic tiles and natural stone, from 24 to 72 hours for resilient and wood coverings (according to thickness).
Application: trowel or pump.
EMICODE: EC1 Plus - very low emission.
Colour: grey.
Storage: 12 months.
Consumption: 1.7 kg/m² per mm of thickness.
Packaging: 25 kg paper bags.



Ultraplan Renovation

Self-levelling fibre-reinforced rapid-hardening smoothing compound applied in layers 3 to 40 mm thick. Particularly suitable for levelling off existing substrates, even wooden substrates.



TECHNICAL DATA:

Areas of use: internal floors for installing ceramic, stone, resilient and wooden flooring.
Workability time: 30-40 minutes.
Thickness applied: 3 to 40 mm.
Set to foot traffic: approx. 3-12 hours (depending on thickness).
Waiting time before installation: from 3-4 to 12 hours for ceramic and stable and not sensitive to moisture stone; from 12 to 72 hours for resilient and wood (depending on thickness).
Application: spreader or pump.
EMICODE: EC1 Plus - very low emission.
Colour: grey.
Storage: 12 months.
Consumption: 1.8 kg/m² per mm of thickness.
Packaging: 25 kg bags.

4.3 Primers



Eco Prim Grip Plus

Ready-to-use bonding promoter and primer made from synthetic acrylic resin and silica inerts with a very low emission level of volatile organic compounds (VOC) for render, smoothing and levelling compounds and adhesives for ceramic tiles.



TECHNICAL DATA:

Consistency: creamy liquid.
Colour: grey.
Waiting time before applying render: 15-20 minutes.
Waiting time before applying smoothing compounds: 30 minutes.
EMICODE: EC1 Plus - very low emission.
Storage: 12 months.
Application: roller or brush.
Consumption: 0.20-0.30 kg/m².
Packaging: 10 kg and 5 kg drums.



Primer 3296

Acrylic primer in water dispersion with high penetration, consolidating and anti-dust properties for screeds

TECHNICAL DATA:

Consistency: liquid.
Colour: opaline.
Dilution ratio: as is, 1: 1 or 1:2 according to the absorption of the substrate.
Drying time: 1-5 days.
Waiting time before laying with vinyl adhesive: when dry.
Storage: 12 months.
Application: brush, roller or watering can.
Consumption: 0.1-0.5 kg/m².
Packaging: 5 and 10 kg drums.



Primer G

Synthetic resin primer in water dispersion with a very low content of volatile organic compounds (VOC).



TECHNICAL DATA:

Consistency: liquid.
Colour: blue.
Dilution rate: from 1:1 to 1: 3 with water according to the absorption of the substrate.
Drying time: 2 hours according to the dilution rate and the absorption of the substrate.
Application: brush.
EMICODE: EC1 Plus - very low emission.
Storage: 24 months. Protect from frost.
Consumption: 0.1-0.2 kg/m² according to use.
Packaging: 5, 10 and 25 kg drums and 12x1 kg boxes.



Primer Grip White

Multi-purpose, ready-to-use, synthetic resin-based bonding promoter in water dispersion with silica aggregates and very low emission of volatile organic compounds (VOC). For internal floors and walls. Suitable for improving the adhesion of the adhesives on non-absorbent surfaces and for the adhesion of self-levelling compounds.



TECHNICAL DATA:

Consistency: creamy liquid.
Colour: white.
Application: roller or brush.
Consumption: 0.2 and 0.3 kg/m², depending on the absorbency of the substrate.
Storage: 12 months in a dry area in its original, sealed packaging at a temperature of +5°C to +35°C.
Packaging: 10 kg drums.

4.4 Standard Adhesives



Keraset-R

Cementitious adhesive for ceramic tiles and absorbent porcelain tiles.



TECHNICAL DATA:

Pot life of mix: 8 hours.

Open time: 20 minutes.

Waiting time before grouting:

- On walls: 12 hours

- On floors: 24 hours

Set to light foot traffic: approx. 24 hours.

Ready for use: approx. 14 days.

Colours: grey only.

Application: N° 4, 5 or 6 notched trowel.

EMICODE: EC1 Plus - very low emission.

Storage: 12 months.

Consumption: 2-5 kg/m².

Packaging: 20 kg paper bags.



Mapeset

Cementitious adhesive for ceramic tiles (Thickness of adhesive up to 5mm)



Technical Data

Pot life of mix: 8 hours

Open Time: 20 Minutes

Waiting time before grouting:

- On walls: 12 hours

- On floors: 24 hours

Set to light foot traffic: Approximately 24 hours

Ready for use: Approximately 14 days

Colours: Grey only

Application: No 4, 5 or 6 notched trowel

EMICODE: EC1 Plus – very low emission

Storage: 12 months

Consumption: 2-5 kg/m²

Packaging: 20 kg paper bags.

4.5 Technical Adhesives



Adesilex P9

High performance cementitious adhesive with no vertical slip and extended open time for ceramic and porcelain tiles and stone materials.



TECHNICAL DATA:

Pot life of mix: 8 hours

Open Time: 30 Minutes

Waiting time before grouting:

- On walls: 8 hours

- On floors: 12 hours

Set to light foot traffic: Approximately 12 hours

Ready for use: Approximately 14 days

Colours: Grey and white

Application: No 4, 5 or 6 notched trowel

EMICODE: EC1 Plus – very low emission

Storage: 12 months

Consumption: 2-5 kg/m²

Packaging: 5 kg and 20 kg bags.



Adesilex P9 Express

Fast setting high performance cementitious adhesive with no vertical slip and extended open time for porcelain tiles and stone materials.



TECHNICAL DATA:

Pot life of mix: 60 minutes

Open Time: 20 Minutes

Waiting time before grouting:

- On walls: 4 hours

- On floors: 6 hours

Set to light foot traffic: Approximately 6 hours

Ready for use: Approximately 14 days

Colours: Grey only

Application: No 4, 5 or 6 notched trowel

EMICODE: EC1 Plus – very low emission

Storage: 12 months

Consumption: 2-5 kg/m²

Packaging: 20 kg paper bags.



Kerabond Plus

High-performance cementitious adhesive with extended open time for ceramic, porcelain and non-sensitive stone materials.



TECHNICAL DATA:
Pot life of mix: 8 hours.
Open time: ≥ 30 minutes.
Waiting time before grouting:
 – on walls: 4-8 hours;
 – on floors: 24 hours.
Set to light foot traffic: approximately 24 hours.
Ready for service: approximately 14 days.
Colours: grey.
Application: N° 4, 5 or 6 notched spreader.
EMICODE: EC1 Plus - very low emission.
Storage: 12 months.
Consumption: 2-5 kg/m².
Packaging: 20 kg bags.



Kerabond T-R

Cementitious adhesive with no vertical slip for porcelain and ceramic tiles and non-sensitive stone materials.



TECHNICAL DATA:
Pot life of mix: 8 hours
Open Time: 20 Minutes
Waiting time before grouting:
 - On walls: 8 hours
 - On floors: 12 hours
Set to light foot traffic: Approximately 12 hours
Ready for use: Approximately 14 days
Colours: Grey only
Application: No 4, 5 or 6 notched trowel
EMICODE: EC1 Plus – very low emission
Storage: 12 months
Consumption: 2-5 kg/m²
Packaging: 20 kg paper bags.



Kerabond T-R Express

Fast setting adhesive with no vertical slip, extended open time, excellent workability for porcelain and ceramic tiles and non-sensitive stone materials.



TECHNICAL DATA:
Pot life of mix: 60 minutes
Open Time: 10 Minutes
Waiting time before grouting:
 - On walls: 4 hours
 - On floors: 6 hours
Set to light foot traffic: Approximately 6 hours
Ready for use: Approximately 7 days
Colours: Grey only
Application: No 4, 5 or 6 notched trowel
EMICODE: EC1 Plus – very low emission
Storage: 12 months
Consumption: 2-5 kg/m²
Packaging: 20 kg paper bags.

4.6 Technical Deformable Adhesives



Keraflex Maxi S1

High-performance, deformable cementitious adhesive with no vertical slip, extended open time, excellent workability for ceramic and porcelain tiles, particularly recommended for bonding large porcelain and natural stone tiles (thickness of adhesive from 3 to 15 mm). With very low emission of volatile organic compounds.



TECHNICAL DATA:
Pot life of mix: more than 8 hours.
Open time: > 30 minutes.
Waiting time before grouting:
 – on walls: 8 hours;
 – on floors: 12 hours.
Set to foot traffic: Approximately 12 hours.
Ready for use: Approximately 14 days.
Deformability according to EN 12004:
 S1 - deformable.
Colour: grey.
Application: N° 4, 5, 6 or 10 notched spreader.
EMICODE: EC1 Plus - very low emission.
Storage: 12 months.
Consumption: 1.2 kg/m² per mm of thickness.
Packaging: 20 kg paper bags.



Keraflex S1 Express

High performance deformable cementitious adhesive with extended open time and high wetting capacity for ceramic and porcelain tiles and stone materials. Particularly recommended for bonding porcelain tiles on large spreads of flooring, applied in layers of up to 10mm. With very low emissions of organic compounds.



TECHNICAL DATA:

Pot life of mix: 60 minutes
Open Time: 20 Minutes
Waiting time before grouting:
 - On walls: 4 hours
 - On floors: 6 hours
Set to light foot traffic: Approximately 6 hours
Ready for use: Approximately 7 days
Colours: Grey and white
Application: No 4, 5 or 6 notched trowel
EMICODE: EC1 Plus – very low emission
Storage: 12 months
Consumption: 2-5 kg/m²
Packaging: 20 kg paper bags.

4.7 Technical Fast-setting Adhesives and Levelling Compounds



Adesilex P4

High-performance, self-buttering, quick-setting grey cementitious adhesive for ceramic and porcelain tiles and stone material (thickness of adhesive from 3 to 20 mm). **N.B.** May also be used for smoothing internal and external surfaces.



TECHNICAL DATA:

Where to use: floors only.
Pot life of mix: more than 60 minutes.
Open time: 15 minutes.
Waiting time before grouting: 4 hours.
Set to light foot traffic: approximately 4 hours.
Ready for use: approximately 7 days.
Colour: grey.
Application: N° 6 or 10 notched rounded trowel.
EMICODE: EC1 Plus - very low emission.
Storage: 12 months.
Consumption: 4-10 kg/m².
Packaging: 20 kg bags.

4.8 Reaction Resin Adhesives



Keralastic T

Two-component, high-performance polyurethane adhesive with no vertical slip for ceramic tiles, porcelain tiles and stone material.



TECHNICAL DATA:

Open time: 50 minutes.
Waiting time before grouting: 12 hours.
Set to light foot traffic: approx. 12 hours.
Ready for use: approx. 7 days.
Deformability: highly deformable.
Colours: grey and white.
Application: N° 4 or 5 notched trowel.
Storage: 24 months.
Consumption: 2.5 -5 kg/m².
Packaging: 5 kg units (A:B = 94 : 6 parts by weight).



Kerapoxy Adhesive

Two-component epoxy adhesive with no vertical slip for ceramic tiles, porcelain tiles and stone material.



TECHNICAL DATA:

Pot life of mix: 45 minutes.
Open time: 60 minutes.
Set to light foot traffic: approx. 10-12 hours.
Ready for use: 2 days.
Colours: grey and white.
Application: suitable notched trowel.
Storage: 24 months.
Consumption: 1.5 kg/m² per mm of thickness.
Packaging: 10 kg units.



Ultrabond Eco PU 2K

Two-component, solvent-free, high performance, non-slip polyurethane adhesive with very low emission level of volatile organic compounds (VOC) for ceramic and stone tiles.



TECHNICAL DATA:

Open time: 20 minutes.
Waiting time before grouting: 12 hours.
Set to foot traffic: approx. 12 hours.
Ready for service: approx. 7 days.
Deformability: good.
Colours: grey and white.
Application: N° 4 or 5 notched spreader.
EMICODE: EC1 Plus - very low emission.
Storage: 12 months.
Consumption: 2.5 -5 kg/m².
Packaging: 5 kg kit (A:B = 88:12 parts in weight).

4.9 Cementitious Grouts



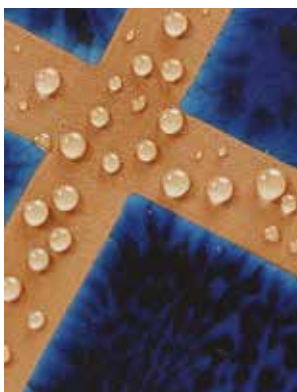
Keracolor FF

Pre-blended, high-performance, polymer-modified cementitious mortar with water-repellent DropEffect® technology for grouting joints up to 6 mm wide.



TECHNICAL DATA:

Pot life of mix: approx. 2 hours.
Waiting time before finishing: 10-20 minutes.
Set to light foot traffic: approx. 24 hours.
Ready for use: 7-10 days.
Colours: 13.
Application: rubber MAPEI trowel or rake.
Finishing: MAPEI sponge.
EMICODE: EC1 Plus - very low emission.
Storage: 12 months (20 kg bags), 24 months (5 kg bags).
Consumption: according to the size of the joints.
Packaging: 20 kg bags, 4x5 kg Alupack boxes and 8x2 kg Alupack boxes per colour.



Ultracolor Plus

High-performance, anti-efflorescence, quick-setting and drying polymer-modified mortar with water-repellent DropEffect® and mould-resistant BioBlock® technology for grouting joints 2 to 20 mm wide.



TECHNICAL DATA:

Pot life of mix: 20-25 minutes.
Waiting time before finishing: 15-30 minutes.
Set to light foot traffic: approx. 3 hours.
Ready for use: 24 hours (48 hours for basins and swimming pools).
Colours: 34.
Application: rubber trowel.
Finishing: MAPEI sponge.
EMICODE: EC1 Plus - very low emission.
Storage:
 - 12 months (23 kg bags);
 - 24 months (1 and 5 kg bags).
Consumption: according to the size of the joints.
Packaging: 4x5 kg Alupack and Alupack boxes, according to the colour.

4.10 Epoxy Grouts



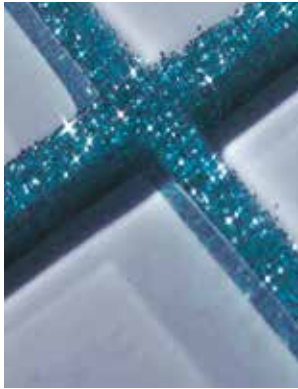
Kerapoxy CQ

Two-component epoxy grout, easy to apply and excellent cleanability, with a bacteriostatic agent and BioBlock® technology, ideal for grouting ceramic tiles and mosaics. Can also be used as an adhesive.



TECHNICAL DATA:

Pot life of mix: 45 minutes.
Set to light foot traffic: approx. 24 hours.
Ready for use: after 4 days surfaces may be exposed to chemicals.
Colours: 19.
Application: rubber MAPEI trowel.
Finishing: MAPEI cellulose sponge.
EMICODE: EC1 Plus - very low emission.
Storage: 24 months.
Consumption: according to the size of the joints.
Packaging: 3 kg units. 10 kg units available upon request.



Kerapoxy Design

Two-component, decorative, acid resistant epoxy grout (available in 32 different colours), ideal for glass mosaics. May also be used as an adhesive.



TECHNICAL DATA:

Pot life of mix: 45 minutes.
Open times: 30 minutes.
Set to light foot traffic: approx. 24 hours.
Ready for use: 4 days.
Colours: 32 different colours.
Application: a suitable trowel.
Emicode: EC1 Plus – very low emission.
Storage: 24 months.
Consumption:
 - For grouting: according to the size of the joints;
 - For bonding: 2-4kg/m².
Packaging: Two components - 3 kg units.

4.11 Latex



Fugolastic

Liquid polymeric additive for Keracolor FF.

TECHNICAL DATA OF FUGOLASTIC + KERACOLOR FF

Pot life of mix: approx. 2 hours.
Waiting time before finishing: 10-20 minutes.
Set to light foot traffic: approx. 24 hours.
Ready for use: 7-10 days.
Application: rubber MAPEI trowel or rake.
Finishing: MAPEI sponge or Scotch-Brite® pad.
Storage: 24 months. Protect from frost.
Consumption: according to the size of the joints.
Packaging: 1 kg, 5kg and 10 kg drums.



Isolastic

Isolastic is a latex additive used to impart elasticity to cement based adhesives. Isolastic is a type of latex mixed into Kerabond T-R, Kerabond T-R Express and Kerabond Plus undiluted or diluted 1:1 with water



Technical Data of KERABOND T-R and KERABOND T-R EXPRESS and KERABOND PLUS.

Pot life of mix: more than 8 hours
Open Time: 20 Minutes
Waiting time before grouting:
 - On walls: 4 – 8 hours
 - On floors: 6 - 12 hours
Set to light foot traffic: approximately 6 - 12 hours
Ready for use: Approximately 14 days
Deformability according to EN 12004: S2 – highly deformable
Application: No 4, 5 or 6 notched trowel
EMICODE: EC1 Plus – very low emission
Storage: 24 months. Protect from frost
Consumption: 1-2 kg/m²
Packaging: 25 kg drums



Latex Plus

Elasticising latex mixed with KERAFLEX S1 EXPRESS .

When KERAFLEX S1 EXPRESS is mixed with LATEX PLUS it forms a high-performance, quick-setting, highly-deformable adhesive (C2F/S2).



TECHNICAL DATA OF LATEX PLUS + KERAFLEX S1 EXPRESS:

Pot life of mix: 45 minutes.
Open time: 20 minutes.
Waiting time before grouting: 2-3 hours.
Set to light foot traffic: approx. 2-3 hours.
Ready for use: approx. 24 hours. (3 days for basins and swimming pools).
Deformability according to EN 12004: S2 - highly deformable.
Application: N° 4, 5, 6 or 10 notched trowel.
Storage (LATEX PLUS): 24 months. Protect from frost.
Consumption: to be calculated according to the amount of KERAFLEX S1 EXPRESS mixing ratio.
Packaging: 10 kg drums.

4.12 Sealants for Tiles



Mapeflex PU 45 FT

Rapid-hardening paintable polyurethane sealant and adhesive with a high modulus of elasticity for movements up to 20%.



TECHNICAL DATA:

Movement in service: 20%.
Modulus of elasticity at 100% elongation: 0.70 N/mm².
Shore A hardness: 40.
Workability time: 35 mins.
Colours: white, 111 grey, 113 grey, black.
Application: silicone gun.
Consumption: 3.0 meters per 300 ml cartridge, 6.0 meters per 600 ml tube (10x10 mm section).
Packaging: 300 ml cartridge, 600 ml tube.



Mapesil AC

Pure, mould-resistant, acetic silicone sealant with BioBlock® technology for movements up to 25%.



TECHNICAL DATA:

Movement in service: 25%.
Modulus of elasticity at 100% elongation: 0.35 N/mm².
Shore A hardness: 20.
Workability time: 10 minutes.
Colours: 34 colours + transparent.
EMICODE: EC1 Plus - very low emission.
Application: extrusion gun.
Consumption: 3.1 linear metres per 310 ml cartridge (10x10 mm section).
Packaging: 310 ml cartridges.



Mapesil LM

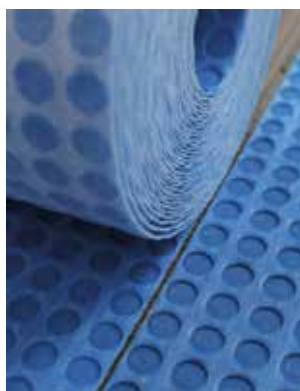
Neutral silicone mould-resistant sealant with BioBlock® technology for stone for movements up to 25%.



TECHNICAL DATA:

Movement in service: 25%.
Modulus of elasticity at 100% elongation: 0.35 N/mm².
Shore A hardness: 21.
Workability time: 15 minutes.
Colours: transparent, 100 white, 110 grey, 111 grey, 112 grey, 113 cement grey, 114 grey, 120 black, 130 jasmine and 132 beige (see "MAPEI Coloured Grouts").
EMICODE: EC1 Plus - very low emission.
Application: extrusion gun.
Consumption: 3.1 linear metres per 310 ml cartridge (10x10 mm section).
Packaging: 310 ml cartridges.

4.13 Complementary Products for Laying Ceramic Tiles and Stone Materials

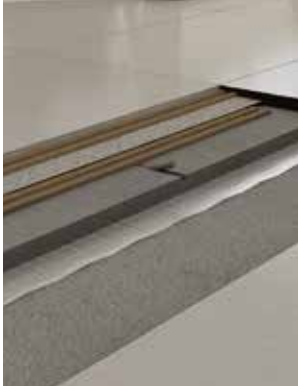


Mapeguard UM 35

Waterproofing, uncoupling and anti-fracture membrane for cracked and damp substrates and substrates that are not fully cured before installing ceramic and stone tiles for internal and external surfaces without having to copy the layout of distribution joints in the substrate..

TECHNICAL DATA:

Length: 30 m.
Width: 1 m.
Application: see technical Data Sheet.
Packaging: 30 m rolls.



Mapetex System

Removable anti-fracture system for laying ceramic and stone flooring.

TECHNICAL DATA:

- MAPETEX:
width: 100 cm and 200 cm.
- MAPETEX STRIP:
width: 50 mm and 410 mm.

Application: see Technical Data Sheet.

Packaging:

MAPETEX:

2 m x 50 m rolls;

1 m x 50 m rolls.

MAPETEX STRIP:

50 mm x 25 m rolls;

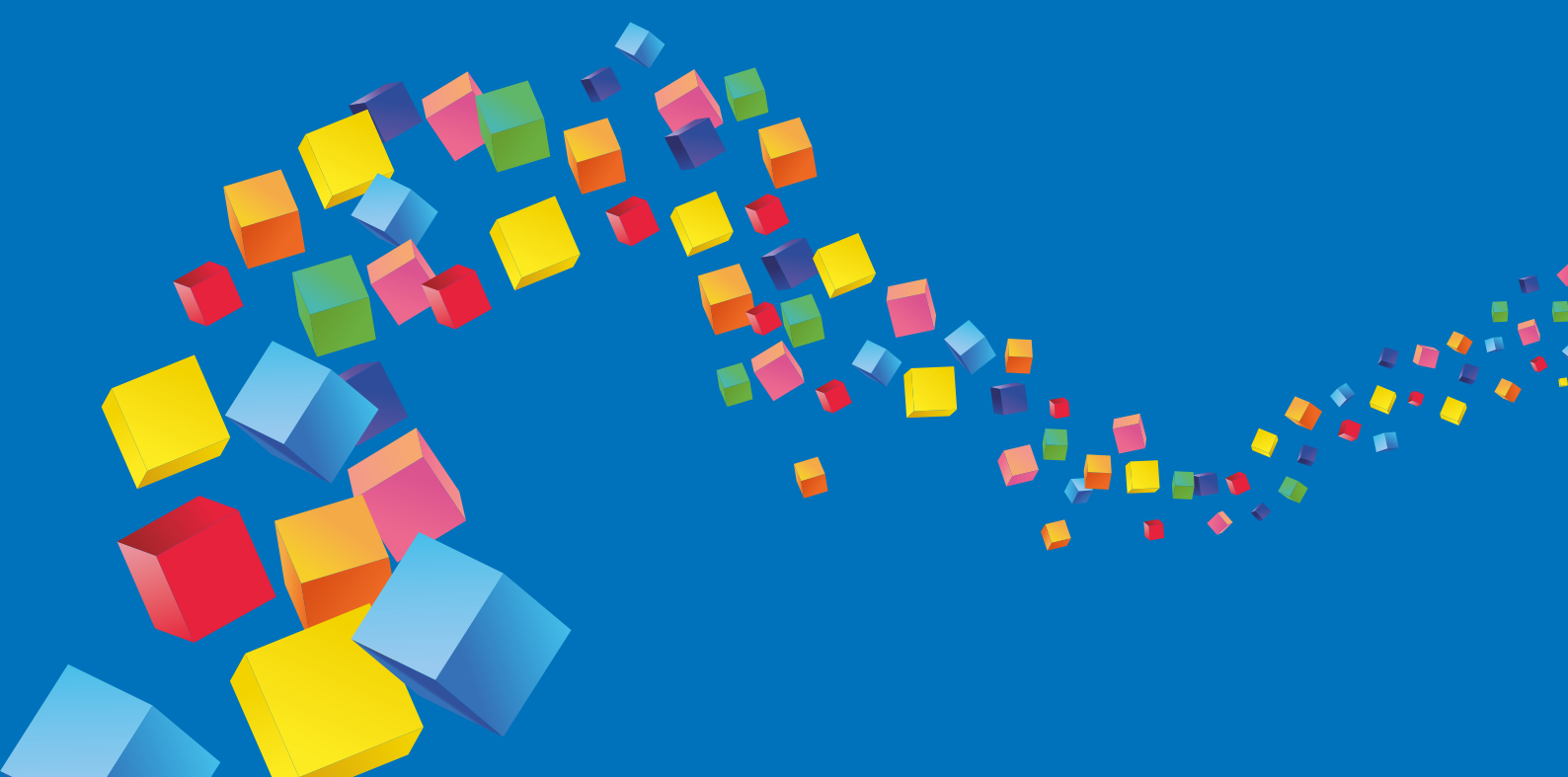
410 mm by 10 m rolls;

410 mm x 5 m rolls.



Ultratop Living being poured before being spread across floor

CEMENTITIOUS AND RESIN FLOORING



5. CEMENTITIOUS AND RESIN FLOORING

5.1 Screeds



Mapecem Pronto

Pre-blended, ready-to-use, quick-setting and drying (24 hours), controlled-shrinkage mortar for screeds.



TECHNICAL DATA:

Mixing ratio: 1 x 25 kg bags of MAPECEM PRONTO with approximately 2.2 litres of water.

Workability time: 20-30 minutes.

Set to light foot traffic: after 2-3 hours.

Waiting time before laying:

- 3 hours for ceramic tiles and stone material;
- 24 hours for resilient and wood coverings.

Residual humidity after 24 h.: less than 2%.

EMICODE: EC1 Plus - very low emission.

Storage: 12 months.

Application: tapping and flattening with a straight edge.

Consumption: 20 kg/m² per cm of thickness.

Packaging: 25 kg paper bags.



Topcem

Special normal-setting, quick-drying (4 days), controlled-shrinkage hydraulic binder for screeds.



TECHNICAL DATA:

Recommended mixing ratio: 200-250 kg of TOPCEM with 1 m³ of aggregates (diameter from 0 to 8 mm) and 110-130 kg of water for dry aggregates.

Workability time: 40-60 minutes.

Set to light foot traffic: after 12 hours.

Waiting time before laying: 24 hours for ceramic tiles, 2 days for natural stone and 4 days for resilient and wood coverings.

Residual humidity after 4 days: less than 2%.

EMICODE: EC1 Plus - very low emission.

Storage: 12 months.

Application: tapping and flattening with a straight edge.

Consumption: 2-2.5 kg/m² per cm of thickness.

Packaging: 20 kg bags



Topcem Pronto

Ready-to-use, normal-setting, controlled-shrinkage mortar with high thermal efficiency for quick-drying (4 days) screeds.



TECHNICAL DATA:

Mixing ratio: 1 x 25 kg bags of TOPCEM PRONTO with 1.7 litres of water.

Workability time: 60 minutes.

Set to light foot traffic: after 12 hours.

Waiting time before laying: 24 hours for ceramic tiles, 2 days for natural stone and 4 days for resilient and wood coverings.

Residual humidity after 4 days: less than 2%.

EMICODE: EC1 Plus - very low emission.

Storage: 12 months.

Application: tapping and flattening with a straight edge.

Consumption: 18-20 kg/m² per cm of thickness according to the grade of compacting.

Thermal efficiency: λ = 2,008 W/mK.

Packaging: 25 kg paper bags.

5.2 Substrate Preparation



Epriorip

Two-component, solvent-free, epoxy adhesive for construction joints and monolithic sealing of cracks in screeds.



TECHNICAL DATA:

Mixing ratio: comp. A : comp. B = 3 : 1.

Pot life of mix: 30 minutes (at +23°C).

Classification: EN 1504-4.

Storage: 24 months.

Application: brush or pouring.

Consumption:

- second pours: 0.5-2 kg/m²;
- sealing cracks: 1.35 kg/l of cavities to be filled.

Packaging:

- 2 kg kits:
 - 1.5 kg drums (comp. A);
 - 0.5 kg drums (comp. B).

- 10 kg kits:
 - 7.5 kg metal drums (comp. A);
 - 2.5 kg drums (comp. B).



Eprip SCR

Two-component rapid-hardening silicate-urethane resin for sealing cracks and joints and carrying out small repairs.



TECHNICAL DATA:

Consistency: comp. A: liquid; comp. B: liquid.
Mixing ratio (in volume): comp. A : comp. B = 1 : 1.
Setting time: 45 mins.
Workability time: 10-12 mins.
Storage: 12 months.
Application: extruded through nozzle on can.
Packaging: boxes containing 6 (A+B) kits (comp. A: 300 ml; comp. B: 300 ml).



Mapetop N AR6

Pre-blended, ready-to-use industrial hardener for concrete floors made from special quartz in a granulometric curve, Portland cement and special additives.



TECHNICAL DATA:

Colour of mix: light grey, anthracite, light green, brown and red.
Density of mix (kg/m³): 2,200.
pH of mix: >12.5.
Application temperature range: from +5°C to +35°C.
Compressive strength EN 13892/2 (N/mm²): 30 (after 1 day); 70 (after 28 days).
Flexural strength EN 13892/2 (N/mm²): 6 (after 1 day) 8 (after 28 days).
Bond strength on concrete (substrate in MC 0.40 - water/cement ratio = 0.40) according to EN 1766 (N/mm²): ≥ 2 (after 28 days).
Impermeability to water - penetration depth - EN 12390/8 (mm): < 5.
Coefficient of capillary absorption EN 1062/3 (kg/m²·h^{0.5}): < 0.1.
Böhme abrasion resistance EN 13892/3: Class 6.
Reaction to fire EN 13501: Euroclass A1fl.
Storage: 12 months in its original sealed packaging.
Application: by dusting.
Consumption:
 - manual application: from 1.5 to 2.5 kg/m² per coat;
 - mechanical application: from 3 to 5 kg/m².
Packaging: 25 kg bags.



Planitop Smooth & Repair R4 ZA

Rapid-setting shrinkage-compensated thixotropic fibre-reinforced class R4 structural cementitious mortar applied in a single layer from 3 to 40 mm thick for repairing and smoothing concrete.



TECHNICAL DATA:

Maximum size of aggregate: 1.2 mm.
Mixing ratio: 100 parts of PLANITOP SMOOTH & REPAIR R4 ZA with 16.5-17.5 parts of water.
Pot life of mix: approx. 15 mins. at +10°C to +25°C. The pot life of the mix may be extended by 15-20 mins. by adding the set retarding admixture MAPETARD ES (one 0.25 kg bottle per 25 kg bag of PLANITOP SMOOTH & REPAIR R4 ZA).
Minimum applicable thickness: 3 mm.
Maximum applicable thickness: 4 cm per layer.
Classification: EN 1504-3 - class R4 structural mortar; EN 1504-2 - coating (C) principles MC and IR.
EMICODE: EC1 Plus - very low emission.
Storage: 12 months.
Application: gauging trowel or trowel.
Consumption: approx. 17 kg/m² per cm of thickness.
Packaging: 25 kg paper bags and 5 kg alupacks.



Profas

Water-based, solvent-free consolidator with high penetration properties for cementitious substrates.

TECHNICAL DATA:

Consistency: liquid.
Colour: transparent.
Drying time: according to the absorptivity of the substrate.
Storage: 24 months. Protect from frost.
Application: brush, flat brush or roller
Consumption: 0.5-0.7 kg/m².
Packaging: 25 kg drums.

5.3 Primers/Bonding Promoters



Mapecoat I 600 W

Two-component transparent epoxy primer in water dispersion.

TECHNICAL DATA:

Consistency of mix: fluid.
Colour of mix: opaline.
Mixing ratio: comp. A: comp. B = 2.3 : 3.6.
Workability time: 2-3 hours.
Dust dry at +23°C and 50% R.H.: 3-4 hours (first coat); 6-8 hours (second coat).
Final hardening time: 7 days.
Application temperature range: from +8°C to +35°C.
Storage: 24 months in its original sealed packaging.
Application: roller, spray or airless spray.
Consumption: 0.150-0.250 kg/m², depending on the absorbency rate of the substrate.
Packaging: 5.9 kg kits and 11.8 kg kits (A + B).



Primer 3296

Acrylic primer in water dispersion with high penetration, consolidating and anti-dust properties for screeds

TECHNICAL DATA:

Consistency: liquid.
Colour: opaline.
Dilution ratio: as is, 1: 1 or 1:2 according to the absorption of the substrate.
Drying time: 1-5 days.
Waiting time before laying with vinyl adhesive: when dry.
Storage: 12 months.
Application: brush, roller or watering can.
Consumption: 0.1-0.5 kg/m².
Packaging: 5 and 10 kg drums.



Primer SN

Two-component epoxy primer with fillers.
 May be coloured with MAPECOLOR PASTE.



TECHNICAL DATA:

Mixing ratio: component A : component B = 80 : 20.
Colour of mix: neutral.
Consistency of the mix: viscous fluid.
Density of mix (kg/m³): 1500.
Viscosity of the mix (mPa·s): 1,100 ± 100 (# 3 - rpm 50).
Pot life: 30 min.
Application temperature range: from +8°C to +35°C.
Dust dry at +23°C and 50% R.H.: 6 hours.
Set to light foot traffic at +23°C and 50% R.H.: 24 hours.
Final setting time: 7 days.
Storage: 24 months in its original sealed packaging.
Application: flat American trowel or smooth trowel.
Consumption: 0.3-0.7 kg/m² per coat, depending on the absorbency and characteristics of the substrate.
Packaging: 20 kg kits (A+B); 5 kg kits (A+B).



Primer W-AS

Two-component epoxy primer in water dispersion for electrically conductive coatings.

TECHNICAL DATA:

Mixing ratio: comp. A : comp. B = 25 : 75.
Colour of mix: black.
Consistency of mix: fluid.
Density of mix (kg/m³): 1,220.
Viscosity of mix (mPa·s): 950 (# 4 - 50 rpm).
Workability time: +10°C: approx. 120 min. +20°C: approx. 90 min. +30°C: approx. 30 min.
Application temperature range: from +10°C to +30°C.
Electrical resistance: 10³<R_E<10⁴ Ohm (typical resistance at earthing points).
N.B.: these values may vary according to surrounding conditions (temperature and humidity) and the equipment used to take the readings.
Set to foot traffic: approx. 26 h at +10°C; approx 13 h at +20°C; approx 8 h at +30°C.
Storage: 12 months in its original packaging at a temperature of between +5°C and +30°C.
Consumption: 80-100 g/m².
Packaging: 8 kg kits (A+B).

5.4 Flooring Solutions



Mapecoat I 24

Two-component epoxy paint for anti-acid coatings on concrete surfaces.



TECHNICAL DATA:

Mixing ratio: comp. A : comp. B = 4 : 1.
Colour of mix: white, grey (Ral 7001), Neutral and in RAL colours.
Application temperature range: from +5°C to +30°C.
Workability time: 30-40 minutes.
Setting time of film: 4-5 hours.
Waiting time between first and second coat: 6-24 hours.
Final hardening time: 3 days.
Storage: 24 months in its original sealed packaging.
Application: brush, roller or airless spray.
Consumption: 400-600 g/m² per coat.
Packaging:
 - 5 kg kits (A+B);
 - 15 kg kits (A+B).



Mapecoat I 620 W

Two-component, shiny epoxy finish in water dispersion for anti-dust and anti-grease treatments on concrete floors, cementitious substrates and as a finishing coat on epoxy systems.



TECHNICAL DATA:

Mixing ratio: comp. A : comp. B = 50:100.
Colour of mix: opaline.
Consistency of mix: fluid.
Application temperature range: from +12°C to +30°C.
Workability time: 40 minutes.
Dusty dry: 3 hours.
Setting time: 8-9 hours.
Set to light foot traffic: 24 hours.
Final hardening time: 7 days.
Storage: 12 months in its original sealed packaging.
Application: short-haired or medium-haired roller or airless spray system.
Consumption: 0.100-0.250 kg/m² per coat according to the absorption of the substrate.
Packaging: 15 kg kits (A + B).



Mapefloor CPU/COVE

Three-component polyurethane/cement-based mortar for making covings and details.



TECHNICAL DATA:

Mixing ratio: A/B/C = 1.6/1.4/18 plus 0.25 parts by weight of MAPECOLOR PASTE.
Colour of mix: depending on the colour of MAPECOLOR PASTE used.
Pot life of mix at +20°C: 20 minutes.
Full hardening time: 5 days.
Compressive strength after 28 days (EN 196-1): ≥ 40 N/mm².
Shore D hardness after 28 days: 75-80.
Storage: 12 months in its original sealed packaging.
Application: suitable steel or plastic tools.
Consumption: according to the size and shape of the edge or corner to be blended: approx. 2 kg/l.
Packaging: 21 kg kits (A+B+C).



Mapefloor CPU/HD

Three-component, high-strength polyurethane-cement mortar with high resistance to chemicals for industrial floors, applied in thicknesses 6 to 9 mm. Complies with standards applied in the foodstuffs sector.



TECHNICAL DATA:

Mixing ratio: A/B/C = 2.6/2.7/20.5 plus 5 kg of MAPECOLOR CPU.
Colour of mix: grey, beige, ochre, red and green.
Consistency of mix: thick.
Pot life of mix at +20°C: 15 minutes.
Dust dry at +23°C and 50% R.H.: 2-4 hours.
Set to light foot traffic at +23°C and 50% R.H.: 8 hours.
Final hardening time: 4 days.
Slip resistance (pendulum test method EN 13036-4):
 - dry: 85 (class II);
 - wet: 60 (class I).
Storage: 12 months in its original sealed packaging.
Application: American smooth trowel.
Consumption: 2 kg/m² per mm of thickness.
Packaging: 25.8 kg kits (A+B+C).



Mapefloor CPU/MF

Three-component, self-levelling polyurethane-cement mortar with high resistance to chemicals for industrial floors, applied in thicknesses 3 to 6 mm. Complies with standards applied in the foodstuffs sector.



TECHNICAL DATA:

Mixing ratio: A/B/C = 5.2/5.4/20 plus 5 kg of MAPECOLOR CPU.
Colour of mix: grey, beige, ochre, red and green.
Consistency of mix: self-levelling fluid.
Pot life of mix at +20°C: 15 minutes.
Dust dry at +23°C and 50% R.H.: 2-4 hours.
Set to light foot traffic at +23°C and 50% R.H.: 24 hours.
Final hardening time: 4 days.
Compressive strength: 50 N/mm².
Flexural strength: 15 N/mm².
Storage: 12 months in its original sealed packaging.
Application: smooth trowel or rake with spacers.
Consumption: 1.7 kg/m² per mm of thickness.
Packaging: 30.6 kg kits (A+B+C).



Mapefloor FC 200 ME

Two-component epoxy formulate with 100% solid content used to create multi-layered resin coatings with an attractive smooth or non-slip surface.

TECHNICAL DATA:

Mixing ratio: comp. A: comp. B = 3:6:1.
Colour of mix: Ral colors - Please contact head office.
Density of mix: 1.57 kg/Lt.
Viscosity of mix: at 25°C (mPa.s): 5400.
Workability time: 60 minutes.
Set to light foot traffic at +25°C: 24 h.
Flexural strength (ASTM D790-99): >40 N/mm²
Compressive strength (ASTM C579-01/B): >80 N/mm²
Storage: 24 months in a dry area in its original, closed packaging.
Consumption: 0.15-0.35 kg/m² depending on the condition of the surface to be treated, absorbency, roughness, and the actual conditions on site.
Packaging: 25.5 kg kits (A+B = 22 kg+3.5 kg).



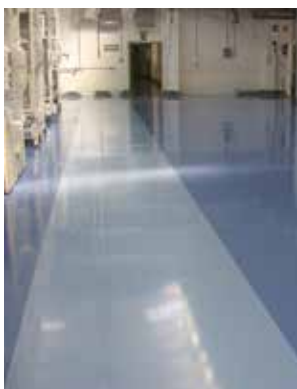
Mapefloor I 300 SL

Two-component, multi-purpose, neutral-coloured epoxy formulate for industrial floor coatings up to 4 mm thick. May be coloured with MAPECOLOR PASTE. Complies with standards applied in the foodstuffs sector.



TECHNICAL DATA:

Mixing ratio: comp. A : comp. B = 3 : 1.
Colour of mix: neutral.
Consistency of mix: fluid.
Dust dry at +23°C and 50% R.H.: 2-4 hours.
Set to light foot traffic at +23°C and 50% R.H.: 24 hours.
Final hardening time: 7 days.
Taber Test after 7 days (EN ISO 5470-1) CS17 disk, 1000 cycles, 1000 g at +23°C - 50% R.H.: 70 mg.
Storage: 24 months in its original sealed packaging.
Application: by roller or flat or notched trowel.
Consumption:
 - 2.0 kg/m² for 2 mm thick self-levelling coatings on substrates primed with PRIMER SN;
 - 0.9 kg/m² for intermediate layers in 3 mm thick non-slip coatings on substrates primed with PRIMER SN;
 - 0.6 kg/m² for finishing layers in 1 mm and 3 mm thick non-slip coatings on substrates primed with PRIMER SN.
Packaging: 20 kg kits (A+B).



Mapefloor I 320 SL CONCEPT

Self-levelling epoxy coating with a coloured granular finish for abrasion-resistant floors.



TECHNICAL DATA:

Mixing ratio: comp. A : comp. B = 100 : 22.
Colour of mix: light grey, dark grey, light blue, dark blue and red.
Consistency of mix: fluid.
Compressive strength after 7 days at +23°C (DIN EN 196-1): 52 N/mm².
Flexural strength after 7 days at +23°C (DIN EN 196-1): 31 N/mm².
Surface hardness (shore D): 75.
Taber Test (after 7 days, CS17 disk, 1000 cycles, 1000 g): 80 mg.
Storage: 12 months in its original sealed packaging.
Application: smooth trowel.
Consumption: 3 kg/m².
Packaging: 16.8 kg kits (A+B).



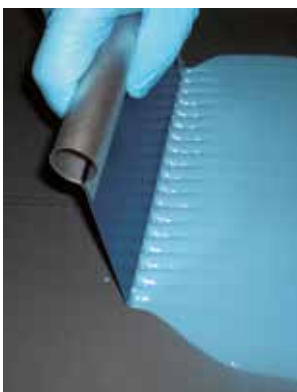
Mapefloor I 360 AS

Two-component, self-levelling epoxy formulate for high strength, electrically conductive coatings.



TECHNICAL DATA:

Mixing ratio: comp. A: comp. B = 80 : 20 by weight.
Colour of mix: neutral.
Consistency of mix: fluid.
Density of mix (kg/m³): 1,420.
Viscosity of mix (Pa·s): 1.5-2.5 (# 3 - 20 rpm).
Workability time: approx. 40 min. at +10°C; approx 25 min. at +20°C; approx 15 min. at +30°C.
Set to foot traffic: approx. 30 h at +10°C; approx 24 h at +20°C; approx 16 h at +30°C.
Electrical resistance (EN 1081) (Ohm): 10⁴ < R_E < 10⁶, these values may vary according to surrounding conditions (temperature and humidity) and the equipment used to take the readings.
Compressive strength after 28 days at +23°C (EN 196-1) (N/mm²): approx. 80 (MAPEFLOOR I 360 AS (without fillers)).
Flexural strength after 28 days at +23°C (EN 196-1) (N/mm²): approx. 40 (MAPEFLOOR I 360 AS (without fillers)).
Abrasion resistance - Taber abrasion meter (CS17 disk - 1,000 revs. - 1,000 g) after 7 days at 23°C (DIN 53109) (mg): 70.
Shore D hardness after 3 days at +23°C (DIN 53505): 77.
Adhesion to concrete (ISO 4624) (N/mm²): ≥ 1.5 (failure of concrete).
Storage: 24 months in its original packaging in a dry place at a temperature of between +5°C and +30°C.
Consumption: max. 2.5 kg/m².
Packaging: 20 kg kits (A + B).



Mapefloor I 390 EDF

Two-component, self-levelling epoxy formulate for high strength, dissipative coatings.



TECHNICAL DATA:

Mixing ratio: comp. A : comp. B = 80 : 20 by weight.
Colour of mix: neutral.
Consistency of mix: fluid.
Density of mix (kg/m³): 1,420.
Viscosity of mix (Pa·s): 1.5-2.5 (# 3 - 20 rpm).
Workability time: approx. 40 min. at +10°C; approx 25 min. at +20°C; approx 15 min. at +30°C.
Set to foot traffic: approx. 30 h at +10°C; approx 24 h at +20°C; approx 16 h at +30°C.
Electrical resistance (EN 1081) (Ohm): 10⁶ < R_E < 10⁹, these values may vary according to surrounding conditions (temperature and humidity) and the equipment used to take the readings.
Compressive strength after 28 days at +23°C (EN 196-1) (N/mm²): approx. 80 (MAPEFLOOR I 390 EDF (without fillers)).
Flexural strength after 28 days at +23°C (EN 196-1) (N/mm²): approx. 40 (MAPEFLOOR I 390 EDF (without fillers)).
Abrasion resistance - Taber abrasion meter (CS17 disk - 1,000 revs. - 1,000 g) after 7 days at +23°C (DIN 53109) (mg): 70.
Shore D hardness after 3 days at +23°C (DIN 53505): 77.
Adhesion to concrete (ISO 4624) (N/mm²): ≥ 1.5 (failure of concrete).
Storage: 24 months in its original packaging in a dry place at a temperature of between +5°C and +30°C.
Consumption: max. 2.5 kg/m².
Packaging: 20 kg kit (A + B).



Mapefloor PU 400 LV

Two-component, self-levelling, neutral-coloured, highly flexible polyurethane binder with fillers.



TECHNICAL DATA:

Mixing ratio: comp. A : comp. B = 40 : 60.
Colour of mix: beige - grey.
Consistency of mix: self-levelling paste.
Pot life at +23°C: 20 minutes.
Dusty dry: 6 hours.
Set to light foot traffic: 8 hours.
Final hardening time: 16 hours.
Elongation (DIN 53504): approx. 750%.
Shore A hardness after 7 days: 55.
Storage: 12 months in its original sealed packaging.
Application: notched trowel.
Consumption: from 1.5 to 2 kg/m² according to the condition of the substrate.
Packaging: 20 kg kits (A + B).



Mapefloor PU 410

Two-component, self-levelling, neutral-coloured, fillerized flexible polyurethane binder.



TECHNICAL DATA:

Mixing ratio: comp. A : comp. B = 16 : 3.9.
Colour of mix: neutral.
Consistency of mix: fluid.
Pot life at +20°C: 30 minutes.
Dusty dry: 2-4 hours.
Set to light foot traffic: 24 hours.
Final hardening time: 7 days.
Elongation (DIN 53504): approx. 112%.
Shore A hardness after 7 days: 90.
Storage: 12 months in its original sealed packaging.
Application: smooth or notched trowel.
Consumption: as an intermediate layer in the MAPEFLOOR PARKING SYSTEM HE: MAPEFLOOR PU 410 + MAPECOLOR PASTE: 1.0 kg/m².
Packaging: 19.9 kg kits (A + B).

5.5 Auxiliary Products for Flooring



Copper Band

Self-adhesive copper strip to make conductive and dissipative surfaces.

TECHNICAL DATA:

Length: 16.5 metres.

Width: 10 millimetres.

Packaging: cardboard box containing 20 bags with 1 roll of 16.5mx10mm COPPER BAND per bag.



Mapecolor CPU

Powder pigment for colouring MAPEFLOOR CPU/MF and MAPEFLOOR CPU/HD.

TECHNICAL DATA:

Colour: grey, beige, ochre yellow, red and green.

Bulk density: $1.4 \pm 0.05 \text{ g/cm}^3$.

Storage: 24 months in its original sealed packaging.

Application: mix with polyurethane/cement-based formulates.

Consumption: mix one 5 kg pack per kit of MAPEFLOOR CPU/MF or MAPEFLOOR CPU/HD.

Packaging: Boxes of 4x5 kg bags in alupack.



Mapecolor Paste

System for colouring MAPEFLOOR I 300 SL, MAPEFLOOR I 500 W, MAPEFLOOR PU 410, PRIMER SN, MAPEFLOOR DECOR 700, MAPEFLOOR I 360 AS and MAPEFLOOR I 390 EDF.

N.B.: other RAL colours available upon request (minimum quantity 25 kg).

TECHNICAL DATA:

Appearance: paste.

Colour: 19 different RAL colours.

Dry substances content (%): 99 ± 1 .

Application temperature range: from $+10^\circ\text{C}$ to $+30^\circ\text{C}$.

Storage: 24 months in its original sealed packaging.

Application: mixed with epoxy products during preparation.

Consumption: 0.7 kg per kit (A+B) of PRIMER SN, MAPEFLOOR I 300 SL and MAPEFLOOR I 500 W.

Packaging: 0.7 kg buckets.



Mapelux Lucida

Double-reticulation, high-strength shiny metallic wax.

TECHNICAL DATA:

Appearance: emulsion.

Colour: bluish-white.

Application temperature range: from $+10^\circ\text{C}$ to $+30^\circ\text{C}$.

pH: 8.4 ± 0.2 .

Storage: 12 months in their original, sealed packaging at a temperature of between $+10^\circ\text{C}$ and $+30^\circ\text{C}$. Protect from frost.

Application: special wax spreader.

Consumption: 50 g/m^2 .

Packaging: 10 kg tanks.



Mapelux Opaca

Double-reticulating, high-strength matt metallic wax.

TECHNICAL DATA:

Appearance: emulsion.

Colour: bluish-white.

Application temperature range: from +10°C to +30°C.

pH: 8.4 ± 0.2 .

Storage: 12 months in their original, sealed packaging at a temperature of between +10°C and +30°C. Protect from frost.

Application: special wax spreader.

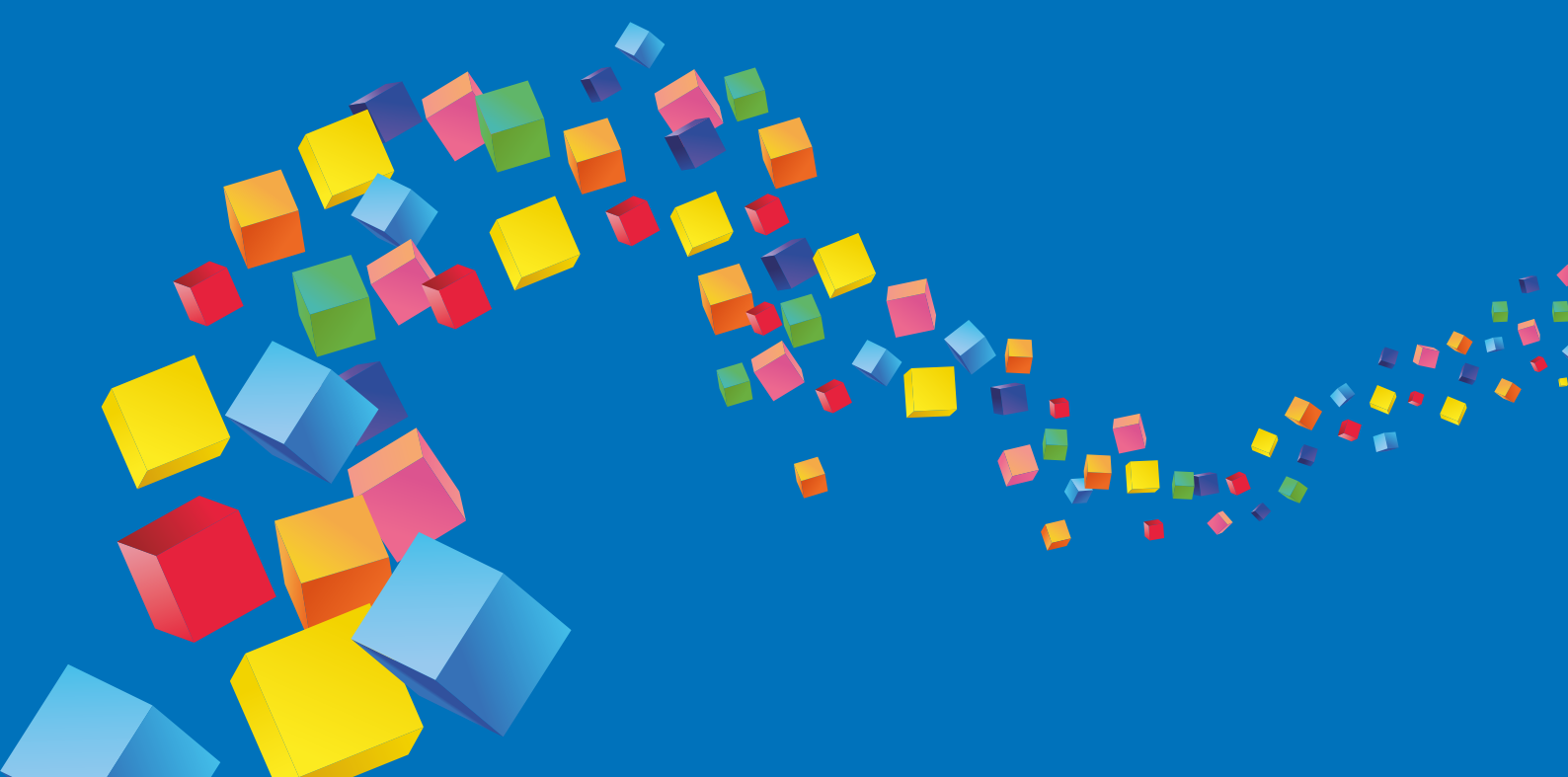
Consumption: 50 g/m².

Packaging: 10 kg drums.



Spot check of adhesives during flooring application

**PRODUCTS FOR LVT, TEXTILE
AND RESILIENT MATERIALS**



6. PRODUCTS FOR LVT, TEXTILE AND RESILIENT MATERIALS

6.1 Screeds



Mapecem Pronto

Pre-blended, ready-to-use, quick-setting and drying (24 hours), controlled-shrinkage mortar for screeds.



TECHNICAL DATA:

Mixing ratio: 1 x 25 kg bag of MAPECEM PRONTO with approximately 2.2 litres of water.

Workability time: 20-30 minutes.

Set to light foot traffic: after 2-3 hours.

Waiting time before laying:

- 3 hours for ceramic tiles and stone material;
- 24 hours for resilient and wood coverings.

Residual humidity after 24 h.: less than 2%.

EMICODE: EC1 Plus - very low emission.

Storage: 12 months.

Application: tapping and flattening with a straight edge.

Consumption: 20 kg/m² per cm of thickness.

Packaging: 25 kg paper bags.



Topcem

Special normal-setting, quick-drying (4 days), controlled-shrinkage hydraulic binder for screeds.



TECHNICAL DATA:

Recommended mixing ratio: 200-250 kg of TOPCEM with 1 m³ of aggregates (diameter from 0 to 8 mm) and 110-130 kg of water for dry aggregates.

Workability time: 40-60 minutes.

Set to light foot traffic: after 12 hours.

Waiting time before laying: 24 hours for ceramic tiles, 2 days for natural stone and 4 days for resilient and wood coverings.

Residual humidity after 4 days: less than 2%.

EMICODE: EC1 Plus - very low emission.

Storage: 12 months.

Application: tapping and flattening with a straight edge.

Consumption: 2-2.5 kg/m² per cm of thickness.

Packaging: 20 kg bags



Topcem Pronto

Ready-to-use, normal-setting, controlled-shrinkage mortar with high thermal efficiency for quick-drying (4 days) screeds.



TECHNICAL DATA:

Mixing ratio: 1 x 25 kg bags of TOPCEM PRONTO with 1.7 litres of water.

Workability time: 60 minutes.

Set to light foot traffic: after 12 hours.

Waiting time before laying: 24 hours for ceramic tiles, 2 days for natural stone and 4 days for resilient and wood coverings.

Residual humidity after 4 days: less than 2%.

EMICODE: EC1 Plus - very low emission.

Storage: 12 months.

Application: tapping and flattening with a straight edge.

Consumption: 18-20 kg/m² per cm of thickness according to the grade of compacting.

Thermal efficiency: λ = 2,008 W/mK.

Packaging: 25 kg bags.

6.2 Self-levelling Screeds



Planex HR

Rapid-drying, moisture-resistant, self-levelling smoothing compound for layers from 1 to 10 mm thick. Suitable for internal and external applications. Particularly recommended for use in areas where high resistance to static and dynamic loads is required. Suitable for substrates that are not completely dry or which have a high level of residual moisture.



TECHNICAL DATA:

Where to use: internal and external floors and walls for ceramic, natural stone, resilient and wooden coverings.

Workability time: 20-30 minutes.

Thickness applied: from 0 to 10 mm.

Set to light foot traffic: approx. 3 hours.

Waiting time before laying: 24-48 hours for ceramic tiles and natural stone, 12 hours for resilient coverings.

EMICODE: EC1 Plus - very low emission.

Colour: grey.

Storage: 12 months.

Application: rake, trowel or pump.

Consumption: 1.7 kg/m² per mm of thickness.

Packaging: 25 kg bags.



Ultraplan Contract

Self-levelling, ultra quick-hardening smoothing compound for thicknesses from 1 to 10 mm, with a very low emission of volatile organic compounds.



TECHNICAL DATA:

Where to use: internal floors and walls, for ceramic, natural stone, resilient and wooden coatings.
Workability time: 20-30 min.
thickness applied: da 1 a 10 mm.
Set to light foot traffic: approx. 3 hours.
Waiting time before laying: 3-4 hours for stable and not sensitive to moisture ceramic and natural stone, 12 hours for resilient and wood coverings.
Colour: gray.
Storage: 12 months.
Application: trowel, rake or pump.
Consumption: 1.7 kg m² per mm of thickness.
Packaging: 25 kg bags.



Ultraplan Eco 20

Rapid hydrating, fast-drying self-levelling compound.

TECHNICAL DATA:

Consistency: fine powder.
Colour: pink.
Mixing ratio: 24-25 parts water per 100 parts by weight of ULTRAPLAN ECO 20.
Thickness per coat: from 1 to 10 mm.
Self-levelling: yes
Pot Life: 20 – 30 minutes.
Setting time: 45 – 60 minutes.
Set to light foot traffic: 3 hours.
Storage: 12 months.
Consumption: 1.6 kg/m² per mm of thickness.
Packaging: 20 kg paper bags.



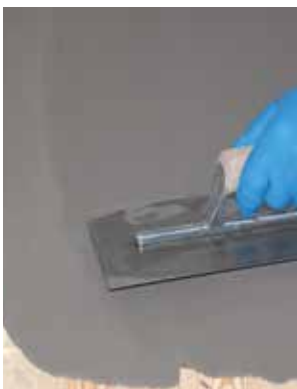
Ultraplan Maxi

Self-levelling, ultra quick-hardening smoothing compound for thicknesses from 3 to 40 mm.



TECHNICAL DATA:

Where to use: internal floors for ceramic, natural stone, resilient and wooden coatings.
Workability time: 30-40 minutes.
Thickness applied: from 3 to 40 mm.
Set to light foot traffic: approx. 3 hours.
Waiting time before laying: from 12 to 24 hours for ceramic tiles and natural stone, from 24 to 72 hours for resilient and wood coverings (according to thickness).
Application: trowel or pump.
EMICODE: EC1 Plus - very low emission.
Colour: grey.
Storage: 12 months.
Consumption: 1.7 kg/m² per mm of thickness.
Packaging: 25 kg bags.



Ultraplan Renovation

Self-levelling fibre-reinforced rapid-hardening smoothing compound applied in layers 3 to 40 mm thick. Particularly suitable for levelling off existing substrates, even wooden substrates.



TECHNICAL DATA:

Areas of use: internal floors for installing ceramic, stone, resilient and wooden flooring.
Workability time: 30-40 minutes.
Thickness applied: 3 to 40 mm.
Set to foot traffic: approx. 3-12 hours (depending on thickness).
Waiting time before installation: from 3-4 to 12 hours for ceramic and stable and not sensitive to moisture stone; from 12 to 72 hours for resilient and wood (depending on thickness).
Application: spreader or pump.
EMICODE: EC1 Plus - very low emission.
Colour: grey.
Storage: 12 months.
Consumption: 1.8 kg/m² per mm of thickness.
Packaging: 25 kg bags.

6.3 Substrate Preparation



Eporip

Two-component, solvent-free, epoxy adhesive for construction joints and monolithic sealing of cracks in screeds.



TECHNICAL DATA:

Mixing ratio: comp. A : comp. B = 3 : 1.

Pot life of mix: 60 minutes (at +23°C).

Classification: EN 1504-4.

Storage: 24 months.

Application: brush or pouring.

Consumption:

– second pours: 0.5-2 kg/m²;

– sealing cracks: 1.35 kg/l of cavities to be filled.

Packaging:

2 kg kits:

– 1.5 kg drums (comp. A);

– 0.5 kg drums (comp. B).

10 kg kits:

– 7.5 kg metal drums (comp. A);

– 2.5 kg drums (comp. B).



Eporip SCR

Two-component rapid-hardening urethane-silicate resin for sealing cracks and joints and carrying out small repairs.



TECHNICAL DATA:

Consistency: comp. A: liquid; comp. B: liquid.

Mixing ratio (in volume): comp. A : comp. B = 1 : 1.

Setting time: 45 mins.

Workability time: 10-12 mins.

Storage: 12 months.

Application: extruded through nozzle on can.

Packaging: boxes containing 6 (A+B) kits (comp. A: 300 ml; comp. B: 300 ml).



Planipatch Fast Track

Fine-grained, ultra quick-drying, thixotropic, cementitious smoothing compound.



TECHNICAL DATA:

Where to use: internal floors and walls for ceramic, natural stone, resilient and wooden coatings.

Workability time: approx. 10 minutes.

Thickness applied: from 0 to 25 mm.

Set to light foot traffic: approx. 1 hour.

Waiting time before laying: minimum 1 hour.

EMICODE: EC1 Plus - very low emission.

Colour: grey.

Storage: 12 months.

Application: trowel.

Consumption: 1.5 kg/m² per mm of thickness.

Packaging: 23 kg bags and 20 kg boxes containing 4x5 kg aluminium bags.

6.4 Primers/Bonding Promoters



Eco Prim Grip Plus

Ready-to-use bonding promoter and primer made from synthetic acrylic resin and silica inerts with a very low emission level of volatile organic compounds (VOC) for render, smoothing and levelling compounds and adhesives for ceramic tiles.



TECHNICAL DATA:

Consistency: creamy liquid.

Colour: grey.

Waiting time before applying render: 15-20 minutes.

Waiting time before applying smoothing compounds: 30 minutes.

EMICODE: EC1 Plus - very low emission.

Storage: 12 months.

Application: roller or brush.

Consumption: 0.20-0.30 kg/m².

Packaging: 10 kg and 5 kg drums.



Eco Prim PU 1K

One-component, solvent-free, moisture curing polyurethane primer with a very low emission level of volatile organic compounds (VOC) for consolidating and waterproofing cementitious screeds.



TECHNICAL DATA:

Consistency: liquid.

Colour: brown.

Set to light foot traffic: after 7-8 hours.

Waiting time before laying parquet using reactive adhesives: min. 24 hours, max. 3 days.

Waiting time before laying parquet or smoothing layer on surfaces sprinkled with quartz: 36 hours.

EMICODE: EC1 Plus - very low emission.

Storage: 12 months.

Application: roller or brush.

Consumption: 0.2-0.4 kg/m².

Packaging: 10 kg drums.



Primer G

Synthetic resin primer in water dispersion with a very low content of volatile organic compounds (VOC).



TECHNICAL DATA:

Consistency: liquid.

Colour: light blue.

Dilution rate: from 1:1 to 1:3 with water according to the absorption of the substrate.

Drying time: 2 hours according to the dilution rate and the absorption of the substrate.

Application: brush.

EMICODE: EC1 Plus - very low emission.

Storage: 24 months. Protect from frost.

Consumption: 0.1-0.2 kg/m² according to use.

Packaging: 5, 10 and 25 kg drums and 12x1 kg boxes.



Primer Grip White

Multi-purpose, ready-to-use, synthetic resin-based bonding promoter in water dispersion with silica aggregates and very low emission of volatile organic compounds (VOC). For internal floors and walls. Suitable for improving the adhesion of the adhesives on non-absorbent surfaces and for the adhesion of self-levelling compounds.



TECHNICAL DATA:

Consistency: creamy liquid.

Colour: white.

Application: roller or brush.

Consumption: 0.2 and 0.3 kg/m², depending on the absorbency of the substrate.

Storage: 12 months in a dry area in its original, sealed packaging at a temperature of +5°C to +35°C.

Packaging: 10 kg drums.



Triblock P

Three-component epoxy-cementitious primer for non-absorbent priming of damp substrates.

TECHNICAL DATA:

Consistency: comp. A liquid; comp. B liquid; comp. C powder.

Colours: comp. A white; comp. B white; comp. C white.

Mixing ratio:

comp. A : comp. B : comp. C = 12 : 38 : 50.

Workability time: 30-40 minutes.

Waiting time between first and second coat: 4-6 hours.

Waiting time before laying floors or applying smoothing compound: 18 hours.

Maximum waiting time before laying floors or applying smoothing compound: 7 days.

Storage: 24 months.

Application: brush or roller.

Consumption: 0.5 kg/m².

Packaging: 5 kg drums (A+B+C).

6.5 Adhesives



Adesilex G19

Two-component, epoxy-polyurethane adhesive for resilient and textile flooring on internal and external absorbent and non-absorbent substrates. Specifically developed for the installation of rubber athletic tracks.

TECHNICAL DATA:

Consistency: comp. A: thick paste; comp. B: fluid liquid.
Colour: comp. A: beige, red, green and black; comp. B: transparent.
Mixing ratio: comp. A: comp. B = 94 : 6.
Pot life of mix: 50-60 minutes.
Setting time: 9 hours.
Set to light foot traffic: 12-24 hours.
Ready for use: 3 days.
Storage: 24 months.
Consumption: 0,35-1,0 kg/m².
Packaging: 5 and 10 kg drums.



Ultrabond 333

Solvent-free, dispersion adhesive for vinyl and textile floor coverings.

TECHNICAL DATA:

Consistency: creamy paste.
Colour: light beige.
Waiting time: 10-20 min.
Open time: 30-40 min.
Walkability: after 3-5 hours.
Commissioning: after approximately 24-48 hours.
Storage: 12 months. Keep away from frost.
Consumption: 0,3-0,5 kg/m².
Packaging: 16 and 25 kg drums.



Ultrabond Eco 4 LVT

Fibre-reinforced LVT adhesive. Specifically developed for the installation of LVT floorings, it guarantees the highest performances in terms of adhesion and dimensional stability.



TECHNICAL DATA:

Consistency: creamy paste.
Colour: light beige.
Density (g/cm³): 1.20.
Waiting time: 0-10 minutes.
Open time: 20-30 minutes.
Set to light foot traffic: 3-5 hours.
Ready for use: 48-72 hours.
EMICODE: EC1 Plus - very low emission.
Storage: 12 months. Protect from frost.
Consumption: 0.25 to 0.30 kg/m².
Packaging: 14 kg drums.



Ultrabond Eco 530

Adhesive with high and fast initial bond. Suitable for the installation of linoleum on fresh adhesive film.



TECHNICAL DATA:

Consistency: creamy paste.
Colour: light beige.
Waiting time: 0-10 minutes.
Open time: 15-20 minutes.
Set to light foot traffic: 3-5 hours.
Ready for use: 24-48 hours.
EMICODE: EC1 Plus - very low emission.
Storage: 12 months in its original sealed packaging. Protect from frost.
Application: N° 2, 3 MAPEI trowels, TKB B1, B2.
Consumption: 0,3-0,45 kg/m².
Packaging: 16 kg drums.



Ultrabond Eco MS 4 LVT

One-component, polymer-silylate adhesive for LVT. Particularly suitable for laying LVT and PVC in wet environments. Available on request.



TECHNICAL DATA:
Consistency: creamy paste.
Colour: ivory.
Open time: 20-30 minutes.
Set to light foot traffic: 5 hours.
Ready for use: 24 hours.
EMICODE: EC1 Plus - very low emission.
Storage: 12 months.
Consumption: 0.25-0.45 kg/m².
Packaging: 15 kg drums.



Ultrabond Eco MS 4 LVT Wall

One-component, polymer-silylate adhesive for the installation of LVT on walls. Available on request.



TECHNICAL DATA:
Consistency: creamy paste.
Colour: ivory.
Open time: 20-30 minutes.
Ready for use: 24 hours.
EMICODE: EC1 Plus - very low emission.
Storage: 12 months.
Consumption: 0.25-0.45 kg/m².
Packaging: 7 kg drums.



Ultrabond Eco S955 1K

One-component, solvent-free, silylated polymer-based adhesive with very low emission level of volatile organic compounds, for all types of parquet.



TECHNICAL DATA:
Consistency: creamy paste.
Colour: beige.
Open time: 50-60 minutes.
Set to light foot traffic: after 12 hours.
Sanding: after 3 days.
EMICODE: EC1 Plus - very low emission.
Storage: 12 months in its original sealed packaging.
Consumption: 0,8-1,2 kg/m².
Packaging: 15 kg drums and 600 ml soft-cartridges.
Polishing: after 3 days.



Ultrabond Eco Tack

Adhesive with permanent tack in water dispersion with a very low emission of volatile organic compounds for self-laying textile squares.



TECHNICAL DATA:
Consistency: liquid.
Colour: light beige.
Waiting time: 30 minutes - 12 hours.
Set to light foot traffic: immediately after laying.
Ready for use: immediately after laying.
EMICODE: EC1 Plus - very low emission.
Storage: 12 months.
Application: by roller.
Consumption: 0.1-0.2 kg/m².
Packaging: 15 kg drums.



Ultrabond Eco TX1

Hard set "STANDARD" adhesive for textile and linoleum flooring.



TECHNICAL DATA:

Consistency: creamy paste.
Colour: light beige.
Waiting time: 0-10 minutes.
Open time: 10-20 minutes.
Set to light foot traffic: 3-5 hours.
Ready to use: 24-48 hours.
EMICODE: EC1 PLUS - very low emission.
Storage: 12 months. Protect from frost.
Application: n. 2, 3 MAPEI trowels, TKB A2,B1,B2.
Consumption: 350-500 g/m².
Packaging: 16 kg drums.



Ultrabond Eco V4SP

Multi-purpose, acrylic adhesive in water dispersion with a long open time and very low emission level of volatile organic compounds (VOC), for laying rubber, PVC, vinyl, polyolephinic, linoleum and carpet flooring.



TECHNICAL DATA:

Consistency: creamy paste.
Colour: light beige.
Waiting time: approximately 10-20 minutes.
Open time: 30-40 minutes.
Set to light foot traffic: after 3-5 hours.
Ready for use: 24-48 hours.
EMICODE: EC1 Plus - very low emission.
Storage: 12 months. Protect from frost.
Consumption: 0.25-0.5 kg/m².
Packaging: 14 kg drums.



Ultrabond Eco V4SP Conductive

Light-coloured adhesive in water dispersion for installing conductive floors with very low emission of volatile organic compounds (VOC).



TECHNICAL DATA:

Consistency: creamy paste.
Colour: light grey.
Waiting time: 0-10 minutes.
Open time: 15 minutes.
Set to light foot traffic: 3-5 hours.
Ready for use: 24-48 hours.
Electrical resistance: 100,000 ohm.
EMICODE: EC1 Plus - very low emission.
Storage: 12 months. Protect from frost.
Application: notched trowel.
Consumption: 200-450 g/m².
Packaging: 16 kg drums.

6.6 Adhesive for Coving



Ultrabond Eco Contact

Solvent-free contact adhesive for resilient and textile floor and wall coverings. ULTRABOND ECO CONTACT is a contact adhesive which has to be applied on both the substrate and the back of the material. It is suitable for bonding covings, fillets, steps and corner pieces.



TECHNICAL DATA:

Consistency: creamy paste.
Colour: white.
Waiting time: from 30 minutes to 2 hours depending on the type of application, temperature, environmental moisture and substrate absorption. Installation is possible even 18 hours after the spreading of the adhesive.
Set to light foot traffic: immediate.
EMICODE: EC1 Plus - very low emission.
Storage: 12 months in its original sealed packaging. Avoid prolonged exposure to frost.
Consumption: 0.15-0.2kg/m² per coat on every kind of surface.
Packaging: 10 and 5 kg drums.

6.7 Ancillary Products for LVT



Flexcolor 4 LVT

Ready to use grout for Luxury Vinyl Tiles.



TECHNICAL DATA:

Consistency: thick paste.

Colours: 112 medium grey, 114 anthracite, 120 black, 130 jasmine, 134 silk, 146 rich brown.

Waiting time before finishing operation: 10-15 minutes.

Set to light foot traffic: 24 hours.

Ready for use: 72 hours.

EMICODE: EC1 - very low emission.

Application: rubber float.

Cleaning and finishing: Scotch-Brite® pad and MAPEI sponge.

Storage: 12 months.

Consumption: according to the size of the joints.

Packaging: 1 and 5 kg drums.



Mapecoat 4 LVT

Two component aliphatic, anti-slip polyurethane finish in water dispersion for LVT.



TECHNICAL DATA:

Mixing ratio: 5/1.

Dust dry: 30 minutes.

Touch dry: 50 minutes.

Re-varnishing (if required): min. 2 hours - max. 48 hours (after more than 48 hours, the surface will need to be adequately prepared with a red or green ULTRACOAT PAD).

Set to light foot traffic: 16 hours.

Ready for use (also in contact with shower water): 24 hours.

EMICODE: EC1 - very low emission.

Gloss level (approximate value): 10-30 gloss.

Slip resistance according to DIN 51130 and AS 4586: R11.

Barefoot slip resistance according to DIN 51097 and AS 4586: A+B.

Slip resistance according to EN 13036-4 and AS 4586 (pendulum method): dry: 90; wet: 55.

Slip resistance (Method B.C.R.): leather, dry surface (μ): 0.56; rubber, dry surface (μ): 0.74; rubber, wet surface (μ): 0.81.

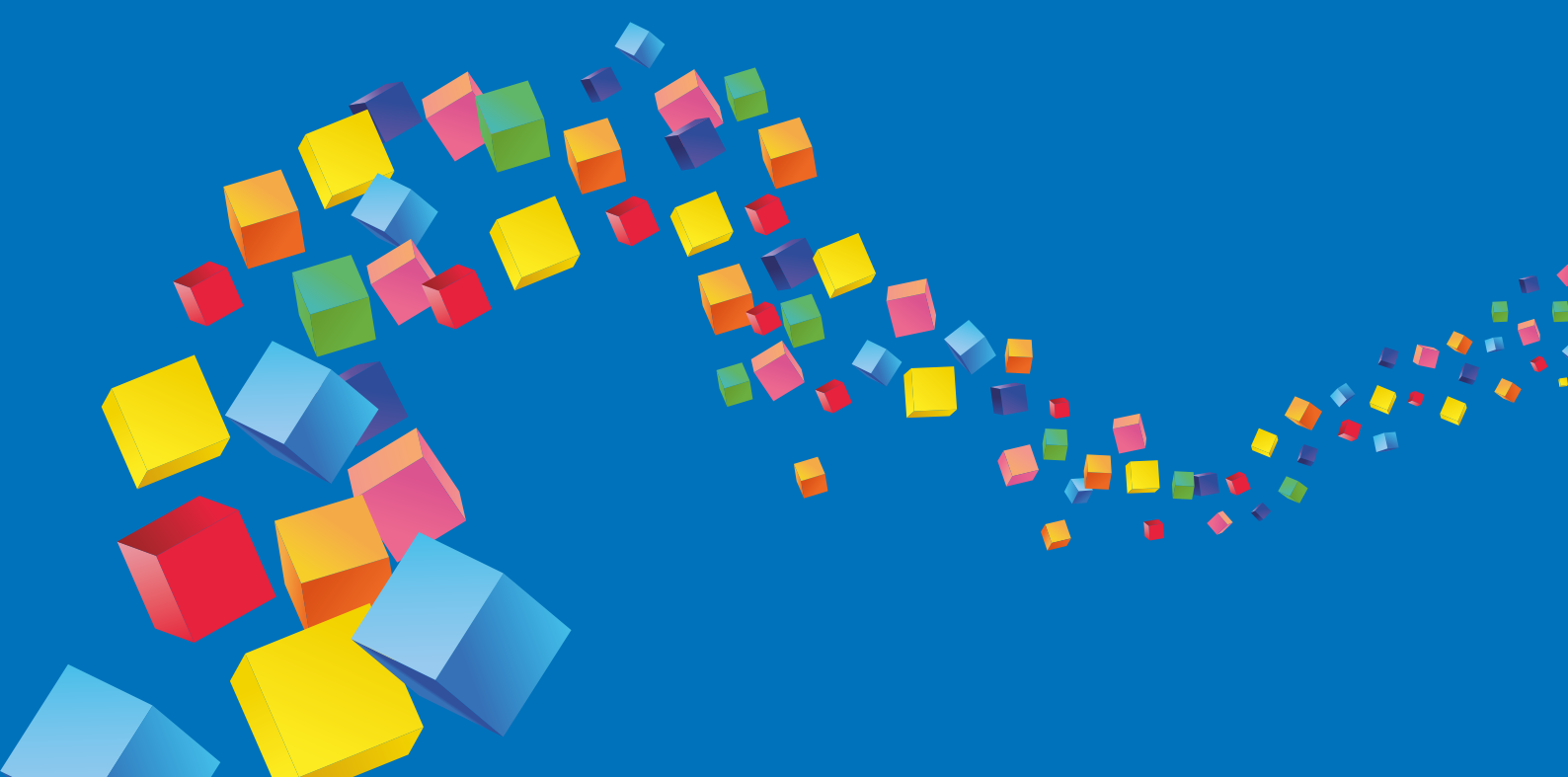
Consumption: 80-100 g/m².

Packaging: 1.2 kg kits (A + B).



Quarzolite Tonachino being applied by paint roller

**PRODUCTS FOR
DECORATIVE COATINGS**



7. PRODUCTS FOR DECORATIVE COATINGS

7.1 Wall Protection and Decorative Coatings



Elastocolor Tonachino Plus

Elastic, water-repellent, mildew and mould-resistant, hygienising, elastomeric coating product for internal and external surfaces.

Available in the following grain sizes:
1.2 mm.



TECHNICAL DATA:

Consistency: paste.

Colours: white or various colours using the **ColorMap®** automatic colouring system.

Density (EN ISO 2811-1) (g/cm³): approx. 1.70.

Dry solids content (EN ISO 3251) (%): approx. 83.

Dilution rate: ready to use (it can be diluted with 1-2% of water).

Recoat time: 12-24 hours.

Application temperature range: from +5°C to +35°C.

Cleaning: water.

Storage: 24 months.

Application: trowel.

Consumption: 1.2 mm: 1.9-2.3 kg/m².

Packaging: 20 kg.



Quarzolite Base Coat

Coloured acrylic undercoat with a smooth finish and good filling and adhesion promoting properties, for internal and external surfaces.

TECHNICAL DATA:

Consistency: thick liquid.

Colour: white or various colours using the **ColorMap®** automatic colouring system.

Density (EN ISO 2811-1) (g/cm³): approx. 1.58.

Dry solids content (EN ISO 3251) (%): approx. 67.

Dilution rate: as it is or diluted with 5-10% of water.

Recoat time: 24 hours.

Application temperature range: from +5°C to +35°C.

Cleaning: water.

Storage: 24 months.

Application: roller, brush or spray.

Consumption: 0.3-0.5 kg/m² per coat.

Packaging: 20 kg.



Quarzolite Tonachino

High-protection, thick-layered acrylic coating product with high filling properties for internal and external surfaces.

Available in the following granulometries:
0.7 mm, 1.2 mm, 1.5 mm and 2.0 mm.



TECHNICAL DATA:

Consistency: paste.

Colour: white or various colours using the **ColorMap®** automatic colouring system.

Density (EN ISO 2811-1) (g/cm³): approx. 1.65-1.95 (according to the grain size).

Dry solids content (EN ISO 3251) (%): approx. 85.

Dilution rate: supplied ready to use (it can be diluted with 1-2% of water).

Recoat time: 24 hours.

Application temperature range: from +5°C to +35°C.

Cleaning: water.

Storage: 24 months.

Application: trowel.

Consumption:

– 0.7 mm: 1.7-2.0 kg/m²;

– 1.2 mm: 1.9-2.3 kg/m²;

– 1.5 mm: 2.2-2.6 kg/m²;

– 2.0 mm: 3-3.5 kg/m².

Packaging: 20 kg.



Quarzolite Tonachino Plus

Highly protective, mould and mildew-resistant acrylic coating product with, for internal and external surfaces.

Available in the following granulometries:
1.2 mm and 1.5 mm.



TECHNICAL DATA:

Consistency: paste.

Colour: white or various colours using the **ColorMap®** automatic colouring system.

Density (EN ISO 2811-1) (g/cm³): approx. 1.55-1.85 (according to the grain size).

Dry solids content (EN ISO 3251) (%): approx. 85.

Dilution rate: supplied ready to use (it can be diluted with 1-2% of water).

Recoat time: 24 hours.

Application temperature range: from +5°C to +35°C.

Cleaning: water.

Storage: 24 months.

Application: trowel.

Consumption:

– 1.2 mm: 1.9-2.3 kg/m²;

– 1.5 mm: 2.2-2.6 kg/m².

Packaging: 20 kg.



Silexcolor Tonachino

Highly transpirant, thick-layered silicate coating product with high filling properties for internal and external surfaces in compliance with DIN 18363. Available in the following granulometries: 0.7 mm, 1.2 mm, 1.5 mm and 2.0 mm.

=



TECHNICAL DATA:

Consistency: paste.

Colour: white or various colours using the **ColorMap®** automatic colouring system.

Density (EN ISO 2811-1) (g/cm³): approx. 1.65-1.95 (according to the grain size).

Dry solids content (EN ISO 3251) (%): approx. 80.

Dilution rate: supplied ready to use (it can be diluted with 3-5% of SILEXCOLOR PRIMER).

Recoat time: 24 hours.

Application temperature range: from +8°C to +35°C.

Cleaning: water.

Storage: 12 months.

Application: trowel.

Consumption:

- 0.7 mm: 1.7-2.0 kg/m²;

- 1.2 mm: 1.9-2.3 kg/m²;

- 1.5 mm: 2.2-2.6 kg/m²;

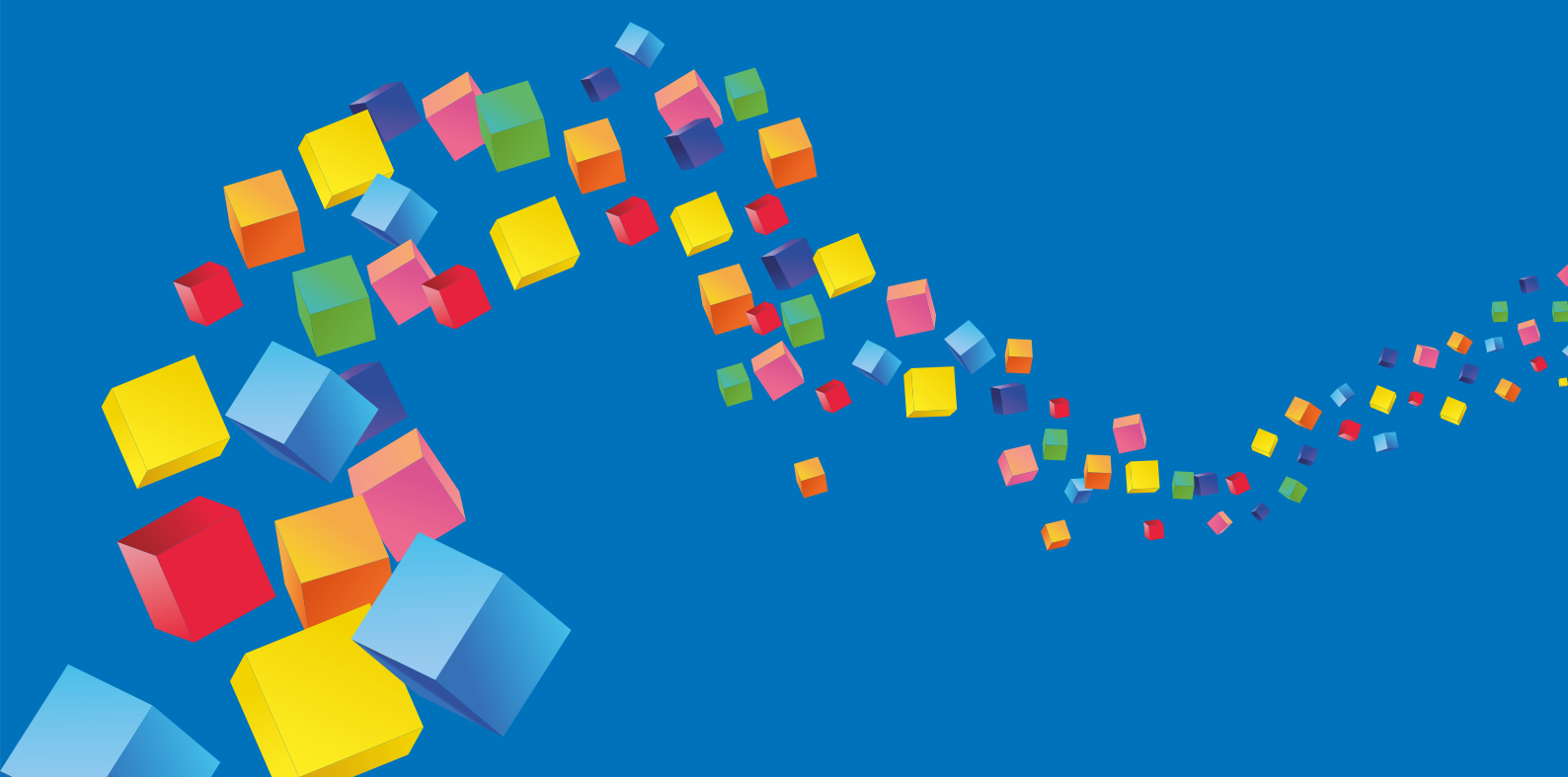
- 2.0 mm: 3.0-3.5 kg/m².

Packaging: 20 kg.



Synthetic turf being applied

**SOLUTIONS FOR
SPORT AND RECREATION SURFACES**



8. SOLUTIONS FOR SPORT AND RECREATION SURFACES

8.1 Base Preparation



Mapesoil 100

High-performance, fibre-reinforced powdered stabilising agent for sports sub-base construction surfaces.

TECHNICAL DATA:

Appearance: Powder with fibres.

Colour: whitish.

Packaging: 15 kg plastic bags, 500 kg big bags.

8.2 Primers



Mapecoat I 600 W

Two-component transparent epoxy primer in water dispersion.

TECHNICAL DATA:

Consistency of mix: fluid.

Colour of mix: opaline.

Mixing ratio: comp. A : comp. B = 2.3 : 3.6.

Workability time: 2-3 hours.

Dust dry at +23°C and 50% R.H.: 3-4 hours (first coat); 6-8 hours (second coat).

Final hardening time: 7 days.

Application temperature range: from +8°C to +35°C.

Storage: 24 months in its original sealed packaging.

Application: roller, spray or airless spray.

Consumption: 0.15-0.25 kg/m², depending on the absorbency rate of diluted product.

Packaging: 5.9 and 11.8 kg kits (A + B).



Mapecoat TNS primer EPW

Two-component, clear epoxy primer in water dispersion.

TECHNICAL DATA:

Consistency of mix: Fluid.

Workability time: 40-50 minutes.

Waiting time before applying finish: 5-6 hours.

Consumption:

- Approximately 0.1-0.2 kg/m², depending on the absorbency of the primer.

Packaging: 10 kg kit.

- Component A – 2 kg.

- Component B – 8 kg.

8.3 Adhesives



Adesilex G19

Two-component, epoxy-polyurethane adhesive for resilient and textile flooring on internal and external absorbent and non-absorbent substrates. Specifically developed for the installation of rubber athletic tracks and mat lay sport floorings.

TECHNICAL DATA:

Consistency: comp. A: thick paste; comp. B: fluid liquid.

Colour: comp. A: beige, red, green and black; comp. B: transparent.

Mixing ratio: comp. A: comp. B = 94 : 6.

Pot life of mix: 50-60 minutes.

Setting time: 9 hours.

Set to light foot traffic: 12-24 hours.

Ready for use: 3 days.

Storage: 24 months.

Application: nr. 1, 2, 3, 4 MAPEI notched trowel, TKB A1, A2, B1, B2, C1.

Consumption: 0,35-1,0 kg/m².

Packaging: 5 and 10 kg drums.

8.4 Solutions for Installing Synthetic turf



Ultrabond Turf 2 Stars

2-component, rapid-setting polyurethane adhesive with very low emission of volatile organic compounds (VOC) for bonding synthetic grass.



TECHNICAL DATA:

Consistency: comp. A: thick paste; comp. B: fluid liquid.
Colour: comp. A: green/red/white; comp. B: brown.
Inflammable: no.
Mixing ratio: comp. A : comp. B = 90 : 10.
Pot life of mix: 30 minutes.
Application temperature range: from +15°C to +35°C.
Open time: 40-45 minutes.
EMICODE: EC1 Plus - very low emission.
Set to light foot traffic: after 12-24 hours.
Storage: 12 months.
Application: N° 3 or 4 notched trowel.
Consumption: 0.4-0.5 kg per metre of 40 mm wide jointing strip (10 kg of adhesive for 20-25 metres).
Packaging: 15 kg plastic drums. Also available in 5 kg drums.



Ultrabond Turf PU 1K

One-component, ready-to-use, polyurethane adhesive for bonding seaming tape between sheets of synthetic grass.

TECHNICAL DATA:

Consistency: creamy paste.
Colour: green.
Inflammable: no.
Application temperature range: from +0°C to +35°C.
Open time: 30 minutes.
Set to light foot traffic: 12 hours.
Storage: 12 months.
Application: N° 3 or 4 notched trowel.
Consumption: 0.30-0.35 kg per linear metre of 40 cm wide jointing strip (10 kg of adhesive for 22-25 linear metres of jointing strip).
Packaging: 7 and 15 kg drums and 600 ml aluminium soft-cartridges.



Ultrabond Turf Repair

One component polyurethane adhesive with modified viscosity for repairing artificial turf surfaces.

TECHNICAL DATA:

Consistency: creamy paste.
Colour: green.
Inflammable: no.
Application temperature range: from +0°C to +35°C.
Set to light foot traffic: 12 hours.
Storage: 12 months.
Application: n° 3 or 4 notched trowel.
Consumption: depending on the seaming tape used for the repairing work.
Packaging: 300 ml cartridges.



Ultrabond Turf Tape 300

High performance seaming tape for sport flooring.

TECHNICAL DATA:

Thickness: 0.5 mm.
Height of roll: 300 mm.
Length of roll: 300 metres.



Ultrabond Turf Tape Pro

Jointing strip for fixing synthetic grass sheets in place and making out lines for various sporting disciplines. When used in combination with adhesives from the ULTRABOND TURF range, it complies with the new FIFA requirements.

TECHNICAL DATA:

Thickness: 0.36 mm.
Height of roll: 300 mm.
Length of roll: 300 metres.

8.5 Mat Lay and Cushioned Floorings



Mapecomfort R

Advanced cushioning SBR rubber mat for MAPECOAT TNS systems.

TECHNICAL DATA:

Type of material: Rolls, 20 m length, 1.5 m height.
Colour: Black.

8.6 Mapecoat TNS System



Mapecoat TNS Color

Smooth, fine-grained waterborne acrylic coloured top-coating.

TECHNICAL DATA:

Consistency: Thick liquid.
Elongation at failure DIN 53504 after 7 days at 23°C (%): 285.
Change in colour after 1,000 hours exposure to a weather-ometer (according to ASTM G 155 cycle 1):
 - blue: $\Delta E < 0.8$.
 - green: $\Delta E < 0.5$.
 - sky blue: $\Delta E < 0.5$.
 - red: $\Delta E < 0.5$.
 - white: $\Delta E < 0.5$.
Consumption:
 - Approximately 0.8 – 1.0 kg/m² for two / three coats.
Packaging: 20 kg plastic drums.



Mapecoat TNS finish 1.3.4

Textured sand-filled, waterborne acrylic coloured top-coating.

TECHNICAL DATA:

Consistency: Thick liquid.
Shore-A-Hardness: 60.
Elongation at failure DIN 53504 after 7 days at +23°C (%):
 - 140 (Mapecoat TNS Finish 1).
 - 115 (Mapecoat TNS Finish 3).
 - 115 (Mapecoat TNS Finish 4).
Change in colour after 1,000 hours exposure to a weather-ometer (according to ASTM G 155 cycle 1):
 - blue: $\Delta E < 0.8$.
 - green: $\Delta E < 0.5$.
 - sky blue: $\Delta E < 0.5$.
 - red: $\Delta E < 0.5$.
 - white: $\Delta E < 0.5$.
Consumption:
 - Mapecoat TNS Finish 1: approx.. 0.5 kg/m² per coat.
 - Mapecoat TNS Finish 3: approx.. 0.4 kg/m² per coat.
 - Mapecoat TNS Finish 4: approx.. 0.3 kg/m² per coat.
Packaging: 20 kg plastic drums.



Mapecoat TNS Grey Base Coat

Textured sand, rubber-filled waterborne elastic acrylic filler and base coating.

TECHNICAL DATA:

Consistency: Thick Liquid.

Elongation at failure DIN 53504 after 7 days at +23°C (%): 63.

Consumption:

- 2 kg/m² per 3/4 coats. Varies according to condition of surface and presence of flaws such as roughness, micro-cracks and gravel clusters.

Packaging: 20 kg plastic drums.



Mapecoat TNS Line

Waterborne acrylic coloured coating for line marking.

TECHNICAL DATA:

Consistency: Thick Liquid.

Change in colour after 1,000 hours exposure to a weather-ometer (according to ASTM G 155 cycle 1):

- White: $\Delta E < 0.5$.
- Yellow: $\Delta E < 1.0$.

Consumption:

- 0.2 – 0.4 kg/m² for two coats.

Packaging: 5 kg plastic drums.



Mapecoat TNS Urban

Acrylic resin based coloured coating in water dispersion with selected fillers, for coating cycle tracks, footpaths and urban features.

TECHNICAL DATA:

Consistency: Thick Liquid

Elongation at failure DIN 53504 after 7 days at +23°C (%): 110.

Change in colour after 1,000 hours exposure to a weather-ometer (according to ASTM G 155 cycle 1):

- blue: $\Delta E < 0.8$.
- green: $\Delta E < 0.5$.
- sky blue: $\Delta E < 0.5$.
- red: $\Delta E < 0.5$.
- white: $\Delta E < 0.5$.

Consumption:

- 2.0 -2.5 kg/m² for one basecoat and three top coats.

Packaging: 20 kg plastic drums.



Mapecoat TNS White Base coat

Sand-filled, semi-flexible acrylic filler and base coating.

TECHNICAL DATA:

Consistency: Thick Liquid.

Elongation at failure DIN 53504 after 7 days at +23°C (%): 46.

Consumption:

- 1.0 -1.5 kg/m² per coat. Varies according to condition of surface and possible presence of roughness, micro-cracks and gravel clusters.

Packaging: 20 kg plastic drums.

CONTACT US





For more information about any of the above products please consult with your technical sales representative or visit www.mapei.co.za

Tel: +27 11 552 8476

Email: info@mapei.co.za

50 Smith Road, Roodekop, Germiston, 1401.



ITALY

MAPEI S.P.A.

Con Socio Unico

HEAD OFFICE

Via Cafiero, 22 - 20158 Milan
Tel. +39 02 37673.1
Fax +39 02 37673.214
www.mapei.com - mapei@mapei.it

MAPEIWORLD MILAN SPECIFICATION CENTRE

Viale Jenner, 4 - 20159 Milan
Tel. +39 02 37673.1 - training@mapei.it

OFFICES IN MILAN

- Viale Jenner, 4 - 20159 Milan
Tel. +39 02 37673.1
Fax +39 02 37673.214
- Via Valtellina, 63 - 20159 Milan
Tel. +39 02 37673.1
Fax +39 02 37673.214

OFFICE IN ROME

Viale Libano, 28 - 00144 Rome
Tel. +39 06 5929211
Fax +39 06 59290337

OFFICE IN LECCE

Via Adriatica, 2 B (ang. viale Porta d'Europa) - 73100 Lecce
Tel. +39 0832 246551
Fax +39 0832 248472
ufficio.lecce@mapei.it

OFFICE IN CIVITANOVA MARCHE

Viale San Luigi Versilia, 38/40
62012 Civitanova Marche (MC)
Tel. +39 02 376 73 052
ufficio.civitanova@mapei.it

OFFICE IN PISA

Via di Gargalione, 9 - 56121 Pisa
Tel. +39 338 69 00 793
f.falciani@mapei.it

PLANTS

- Strada Provinciale, 159
20060 Robbiano di Mediglia (Milan)
Tel. +39 02 906911
Fax +39 02 90660575
- Via Mediana S.S. 148, km 81,3
04100 Latina
Tel. +39 0773 2548
Fax +39 0773 250391

DISTRIBUTION CENTRE IN SASSUOLO

Via Valle D'Aosta, 46
41049 Sassuolo (Modena)
Tel. +39 0536 803116
Fax +39 0536 805255

EUROPE

AUSTRIA

Mapei Austria GmbH
Nußdorf ob der Traisen
Tel. +43-2783-8891
Fax +43-2783-8891-125
www.mapei.at - office@mapei.at
Plants in Nußdorf ob der Traisen and Langenwang
Distribution centres in Vienna, Hall in Tyrol, Graz, Klagenfurt, Nußdorf and Langenwang

BELGIUM and LUXEMBOURG

Mapei Benelux SA/NV
Grâce-Hollogne
Tel. +32-4-2397070
Fax +32-4-2397071
www.mapei.be - mapei@mapei.be

BULGARIA

Mapei Bulgaria E.O.O.D.
Sofia
Tel. +359 (2) 4899775
Fax +359 (2) 4898723
www.mapei.bg - info@mapei.bg
Plant in Ruse

CROATIA

Mapei Croatia d.o.o.
Sveta Nedelja
Tel. +385-1-3647790
Fax +385-1-3647787
www.mapei.hr - mapei@mapei.hr

CZECH REPUBLIC

Mapei spol. s r.o.
Olomouc - Hodolany
Tel. +420-585-201-151
Fax +420-585-227-209
www.mapei.cz - info@mapei.cz

DENMARK

Mapei Denmark A/S
Vejen
Tel. +45 69 60 74 80
www.mapei.dk - post@mapei.dk

FINLAND

Mapei OY
Espoo
Tel. +358 9 867 8900
info@mapei.fi - www.mapei.fi

FRANCE

Mapei France S.A.
Saint-Alban
Tel. +33-5-61357305
Fax +33-5-61357314
www.mapei.fr - mapei@mapei.fr
Plants in Saint-Alban, Montgru Saint-Hilaire and Saint-Vulbas
MAPEIWORLD Paris
Specification Centre
Tel. +33-1-87448032
mapeiworld-paris@mapei.fr

GERMANY

Mapei GmbH
Großostheim
Tel. +49 6026/50197-0
Fax. +49 6026/50197-48
www.mapei.de - info@mapei.de
Plant in Weferlingen

GREECE

Mapei Hellas SA
Chalkida
Tel. +30-22620-71906
Fax +30-22620-71907
www.mapei.gr
mapeihellas@mapei.gr
Plant in Ritsona

HUNGARY

Mapei Kft.
Budaörs
Tel. +36-23-501670
Fax +36-23-501666
www.mapei.hu - mapei@mapei.hu
Plant in Sósokút

NORWAY

Mapei AS
Sagstua
Tel. +47 62 97 20 00
www.mapei.no - post@mapei.no
Plant in Sagstua

POLAND

Mapei Polska Sp. z o.o.
Gliwice
Tel. +48-32-7754450
Fax +48-32-7754471
Commercial office: Warsaw
Tel. +48-22-5954200
Fax +48-22-5954202
www.mapei.pl - info@mapei.pl
Plants in Gliwice and Barcin

PORTUGAL

Lusomapei S.A.
Custanheira do Ribatejo
Tel. +351 263 860 360
Fax +351 263 860 369
www.mapei.pt - geral@mapei.pt
Plant in Anadia

ROMANIA

Mapei Romania SRL
Bucharest
Tel. +40 21 311 78 19/20
Fax +40 21 311 78 21
www.mapei.ro
office@mapei.ro

RUSSIAN FEDERATION

AO Mapei
Moscow
Tel. +7-495-258-5520
Fax +7-495-258-5521
www.mapei.ru
info@mapei.ru
Plants in Stupino (Moscow region), Aramil (Ekaterinburg region) and Kikerino (S. Petersburg region)
Representative office in Almaty (Kazakhstan)

SERBIA

MAPEI SRB d.o.o. Beograd
Leštane, Beograd
Tel.: +381 (0)11 40 46 977
www.mapei.rs
office@mapei.rs
Distribution Centre in Leštane (Beograd)

SLOVAK REPUBLIC

Mapei SK s.r.o.
Ivanka pri Dunaji
Tel. +421-2-4020 4511
www.mapei.sk - office@mapei.sk

SLOVENIA

Mapei d.o.o.
Novo mesto
Tel. +386-1-7865050/51 - Fax +386-1-7865055
www.mapei.si - mapei@mapei.si
Distribution centre in Grosuplje

SPAIN

Mapei Spain SA
Santa Perpetua de Mogoda (Barcelona)
Tel. +34-93-3435050 - Fax +34-93-3024229
www.mapei.es - mapei@mapei.es
Plants in Amposta (Tarragona) and Cabanillas del Campo (Guadalajara)
Distribution Centres in Onda (Castellón) and Marratxí (Mallorca)

SWEDEN

Mapei AB
Bromma
Tel. +46-8-52509080
www.mapei.se - info@mapei.se

SWITZERLAND

Mapei Suisse SA
Sorens / FR
Tel. +41-26-9159000 - Fax +41-26-9159003
www.mapei.ch - info@mapei.ch
Plant in Sorens

THE NETHERLANDS

Mapei Nederland B.V.
Apeldoorn
Tel. +31-85 00 69 200 - Fax +31-85 00 69 299
www.mapei.nl - mapei@mapei.nl

TURKEY

Mapei Yapı Kimyasalları İnşaat San. ve Tic. A.Ş.
Ankara Office: Tel. +90 312 227 84 84
Fax +90 312 227 84 80 - info@mapei.com.tr
Istanbul Office: Tel. +90 216 455 02 12
Fax +90 216 455 02 26
infoistanbul@mapei.com.tr
Izmir Office: Tel. +90 232 502 35 02
infoizmir@mapei.com.tr
Polatlı plant: Tel. +90 312 626 51 52
Fax +90 312 626 50 85 - www.mapei.com.tr

UKRAINE

Mapei Ukraine LLC
Kyiv
Tel. +38 044 221 15 01
Fax +38 044 393 14 52
www.mapei.com.ua - office@mapei.ua
Distribution centre in Zazimje village

UNITED KINGDOM

Mapei U.K. Ltd
Halesowen
Tel. +44-121-5086970 - Fax +44-121-5086960
www.mapei.co.uk
info@mapei.co.uk
MAPEIWORLD London, Clerkenwell
Specification Centre
Tel. +44-203-302 9610
clerkenwell@mapei.co.uk
Plant and distribution centre in Halesowen

THE AMERICAS

ARGENTINA Mapei Argentina SA

Escobar, Buenos Aires
Tel./Fax +54 (348) 443-5000
www.mapei.com.ar
Plant in Escobar, Buenos Aires
Distribution centre in Córdoba

BRAZIL Mapei Brasil Materiais de Construção Ltda

São Paulo
Tel. +55 11 3386-5151
www.mapei.com.br
info@mapei.com.br

CANADA Mapei Inc.

Laval, Québec
Tel. +1-450-662-1212
Fax +1-450-662-0444
www.mapei.ca
Plants in Brampton (ON), Delta (BC), Laval (QC),
Maskinongé (QC)
Distribution centre in Calgary (AB)

COLOMBIA Mapei Colombia S.A.S.

La Estrella, Antioquia
Tel. +57-4-444 65 15
www.mapei.com.co - info@mapei.com.co
Distribution Centres in Bogotá and Barranquilla

COSTA RICA Mapei Construction Chemicals Panama S.A. (Costa Rica branch)

Lagunilla de Heredia
Tel. +506-2237-3689
mapeicostarica@mapei.com.pa

MEXICO Mapei de México, S.A. de C.V.

Querétaro, Qro.
Tel. +52 442 209 5022
01 800 696 27 34
www.mapei.mx
mercadotecniamx@mapei.com
Plants: Zimapan Hgo.; Cancún Q.R.
Distribution centre: Querétaro Qro.

PANAMA Mapei Construction Chemicals Panama S.A.

Panama City
Tel. +507 261 9549
Fax +507 261 9550
www.mapei.com.pa
mapeipanama@mapei.com.pa
Additive Plant in Panama City

PERU Mapei Perú SAC

Lurín - Lima
Tel. +51 1 500 6180
www.mapei.com.pe
info@mapei.com.pe
Plant in Lima

PUERTO RICO Mapei Caribe Inc.

Dorado
Tel. +1-787-270-4162 - Fax +1-787-883-1669
www.mapei.com/PR
Plant in Dorado

U.S.A. Mapei Corporation

Deerfield Beach, Florida
Tel. +1-954-246-8888
Fax +1-954-246-8800
www.mapei.us
Plants in Dalton (GA), Eagan (MN), Fort Lauderdale
(FL), Fredericksburg (VA), Garland (TX),
Swedesboro (NJ), Madison (IL), San Bernardino
(CA), Tempe (AZ) and West Chicago (IL)
Distribution centres in Calhoun (GA) and
Wildwood (FL)

VENEZUELA Mapei de Venezuela CA

Caracas
Tel. +58-212-991-1797
+58-212-991-9423
www.mapei.com.ve
mapeivenezuela@hotmail.com
Plant in Cagua Estado Aragua

ASIA

CHINA - Mapei Construction Materials (Guangzhou) Co. Ltd.

Guangzhou
Tel. +86-20 8365 3489
www.mapei.com.cn
enquiry@mapei.com.cn
Plant in Conghua (Guangzhou)

HONG KONG S.A.R. Mapei China Ltd

Hong Kong
Tel. +852-21486816 - Fax +852-25121328
www.mapei.com.hk
mapei@mapei.com.hk

INDIA - Mapei Construction Products India Pvt Ltd

Bangalore
Tel. +91 80 2222 1820, 2222 1840
Fax +91 80 2222 1810
www.mapei.co.in - infoindia@mapei.co.in
Plants in Bangalore and Vadodara
Offices in Mumbai and New Delhi

INDONESIA - PT MAPEI Indonesia Construction Solutions

Jakarta City Office
Tel. +62 21 782 6976
Cikarang Plant Office
Tel. +62 21 8911427
Fax +62 21 8990 6052
www.mapei.co.id - mapei@mapei.co.id
Plant in Lippo Cikarang, Bekasi

SOUTH KOREA - Mapei Korea Ltd.

Seoul
Tel. +82-2-2199-2000
Fax +82-2-2155-2060
www.mapei.co.kr - mapei@mapei.co.kr
Plant in Cheonan (Chungcheongnam-do)

MALAYSIA Mapei Malaysia Sdn Bhd

Petaling Jaya
Tel. +603-7842 9098
Fax +603-7842 6197
www.mapei.com.my - mapei@mapei.com.my
Plant in Nilai

PHILIPPINES Mapei Philippines Inc.

Binan Laguna
Tel. +63 049 250-2427
admin.ph@mapei.com.ph

QATAR - Mapei Doha L.L.C

Doha
Tel. +974 4 423 1308
Fax +974 4 423 1100
www.mapei.qa - info@mapei.qa

SAUDI ARABIA Mapei Saudia L.L.C

Riyadh
www.mapei.com.sa - info@mapei.com.sa

SINGAPORE Mapei Far East Pte Ltd

Singapore
Tel. +65-68623488
Fax +65-68621012 / 68621013
www.mapei.com.sg - mapei@mapei.com.sg
Plant in Singapore

UNITED ARAB EMIRATES Mapei Construction Chemicals L.L.C

Dubai
Tel. +971 4 815 6666 - Fax +971 4 885 8438
www.mapei.ae - info@mapei.ae
Plant in Dubai

VIETNAM - Mapei Vietnam Ltd

Quang Nam Province
Tel. +84-235-3565 801-7
Fax +84-235-3565 800
Northern Branch in Ha Noi Capital
Tel. +84-24-3928 7924-6
Fax +84-24-3824 8645
Central Branch in Da Nang City
Tel. +84-236-3565 001-4
Fax +84-236-3562 976
Southern Branch in Ho Chi Minh City
Tel. +84-28-3512 1045/6/7-3899 2845
Fax +84-28-3899 2842
www.mapei.com.vn - marketing@mapei.com.vn
Plant in Chu Lai

OCEANIA

AUSTRALIA Mapei Australia Pty Ltd

Brisbane
Tel. +61 7 3276 5000
Fax +61 7 3276 5076
www.mapei.com.au
sales@mapei.com.au
Plant in Wacol

NEW ZEALAND Mapei New Zealand Ltd

Auckland
Tel. +64-9-9211994
Fax +64-9-9211993
www.mapei.co.nz
enquiries@mapei.co.nz

AFRICA

EGYPT Mapei Egypt For Construction Chemicals S.A.E.

Cairo
Tel. +20 2 2537 0000
Fax +20 2 2537 0004
www.mapei.eg
info@mapei.eg

Kenya Mapei East Africa Ltd

Nairobi
P.O. Box 9436 - 00100
Tel. +254 709045000
www.mapei.co.ke
info@mapei.co.ke

SOUTH AFRICA Mapei South Africa (Pty) Ltd

Johannesburg
Tel. +27 11 5528476
Cape Town office
Tel. +27 11 552 8476
Fax +27 86 232 6931
www.mapei.co.za
info@mapei.co.za
Plant in Germiston

20 horizontal grey lines for writing notes.



ADHESIVES • SEALANTS • CHEMICAL PRODUCTS FOR BUILDING

HEAD OFFICE

MAPEI S.p.A.

Via Cafiero, 22 - 20158 Milan

Tel. +39-02-37673.1

mapei.com

mapei@mapei.it

MAPEI South Africa (Pty) Ltd.

50 Smith Road, Roodekop,

Germiston, South Africa

Tel. +27-11-552-8476

Fax +27-86-232-6931

mapei.co.za

info@mapei.co.za

