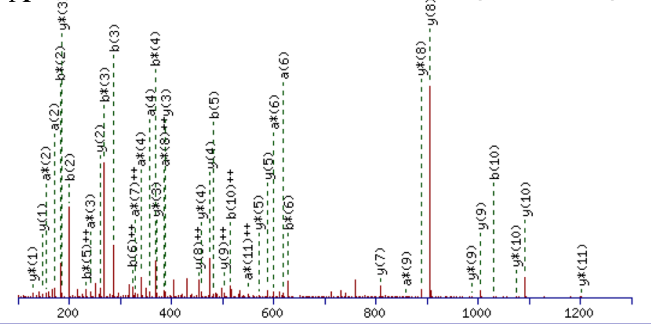
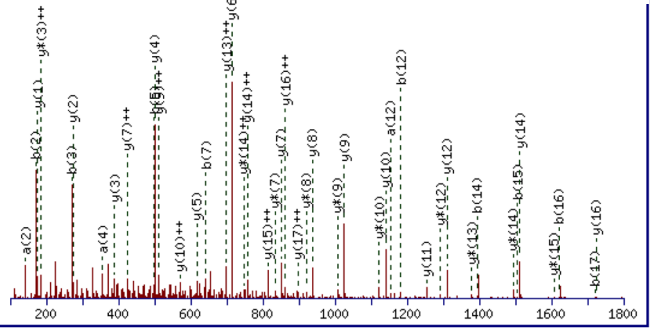


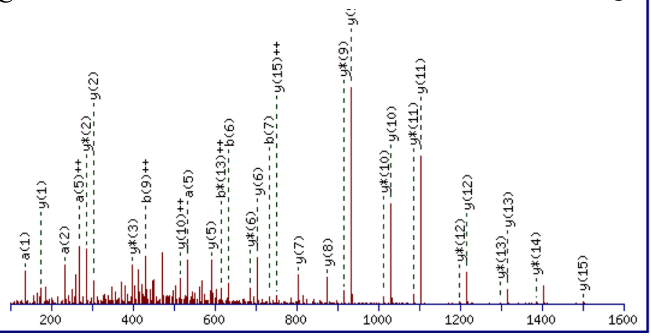
A **AQSVPYGISQIK**



B **VAVIDSGIDSSHPDLNVR**



C **YPSTIAVGAVNSSNQR**



AQSVPYGISQIKAPALHLSQGYTGSNVKVAVIDSGIDSSHPDLNVRGGASFVPSETNPYQDGSSHGTHVAGTIAALNNSIGVLGVAPSASLYAVKVLVDSTG	Majority
-----	-----
10 20 30 40 50 60 70 80 90 100	
1 AQSVPYGISQIKAPALHLSQGYTGSNVKVAVIDSGIDSSHPDLNVRGGASFVPSETNPYQDGSSHGTHVAGTIAALNNSIGVLGVAPSASLYAVKVLVDSTG	gil14422313
1 AQSVPYGISQIKAPALHLSQGYTGSNVKVAVIDSGIDSSHPDLNVRGGASFVPSETNPYQDGSSHGTHVAGTIAALNNSIGVLGVAPSASLYAVKVLVDSTG	Nk
1 AQSVPYGISQIK-----VAVIDSGIDSSHPDLNVR-----	Nk_frag
SGQYSWIIINGIEWAISNNMXVINMSLGGPSGSTALLKTVVDKAVSSGIWVAAAAGNEGSSGSSSTVGYPAKYPSTIAVGAVNSSNQRASFSSAGSELVDVMA	Majority
-----	-----
110 120 130 140 150 160 170 180 190 200	
101 SQQYSWIIINGIEWAISNNMGINMSLGGPSGSTALLKTVVDKAVSSGIWVAAAAGNEGSSGSSSTVGYPAKYPSTIAVGAVNSSNQRASFSSAGSELVDVMA	gil14422313
101 SQQYSWIIINGIEWAISNNMVDVINMSLGGPSGSTALLKTVVDKAVSSGIWVAAAAGNEGSSGSSSTVGYPAKYPSTIAVGAVNSSNQRASFSSAGSELVDVMA	Nk
31 SQQYSWIIINGIEWAISNNMVDVINMSLGGPSGSTALLKTVVDKAVSSGIWVAAAAGNEGSSGSSSTVGYPAKYPSTIAVGAVNSSNQR-----YPSTIAVGAVNSSNQR	Nk_frag
PGVSIQSTLPGGYGAYNGTSMATPHVAGAAALILSKHPTWTNAQVRDRLESTATYLGNSFYFGKGLINQVAAAQ	Majority
-----	-----
210 220 230 240 250 260 270	
201 PGVSIQSTLPGGYGAYNGTSMATPHVAGAAALILSKHPTWTNAQVRDRLESTATYLGNSFYFGKGLINQVAAAQ	gil14422313
201 PGVSIQSTLPGGYGAYNGTSMATPHVAGAAALILSKHPTWTNAQVRDRLESTATYLGNSFYFGKGLINQVAAAQ	Nk
46 PGVSIQSTLPGGYGAYNGTSMATPHVAGAAALILSKHPTWTNAQVRDRLESTATYLGNSFYFGKGLINQVAAAQ	Nk_frag