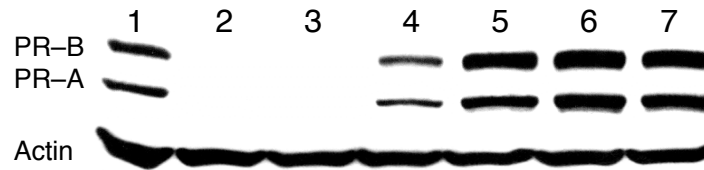


## Supplementary Figure 1.



**Supplementary Fig. 1. Increased expression of PR upon addition of selected RNAs in T47D breast cancer cells.** Western analysis. All RNAs were added to cells at 100 nM. Lane 1, RNA PRMM4. Lanes 2 and 3, siRNAs PRrna1 and PRrna2 that target PR mRNA; Lane 4 an antigene RNA (PR24) known to reduce PR expression; Lane 5, PR25; Lane 6, PR34, and Lane 7, PR44. RNA sequences are in **Table 1**.