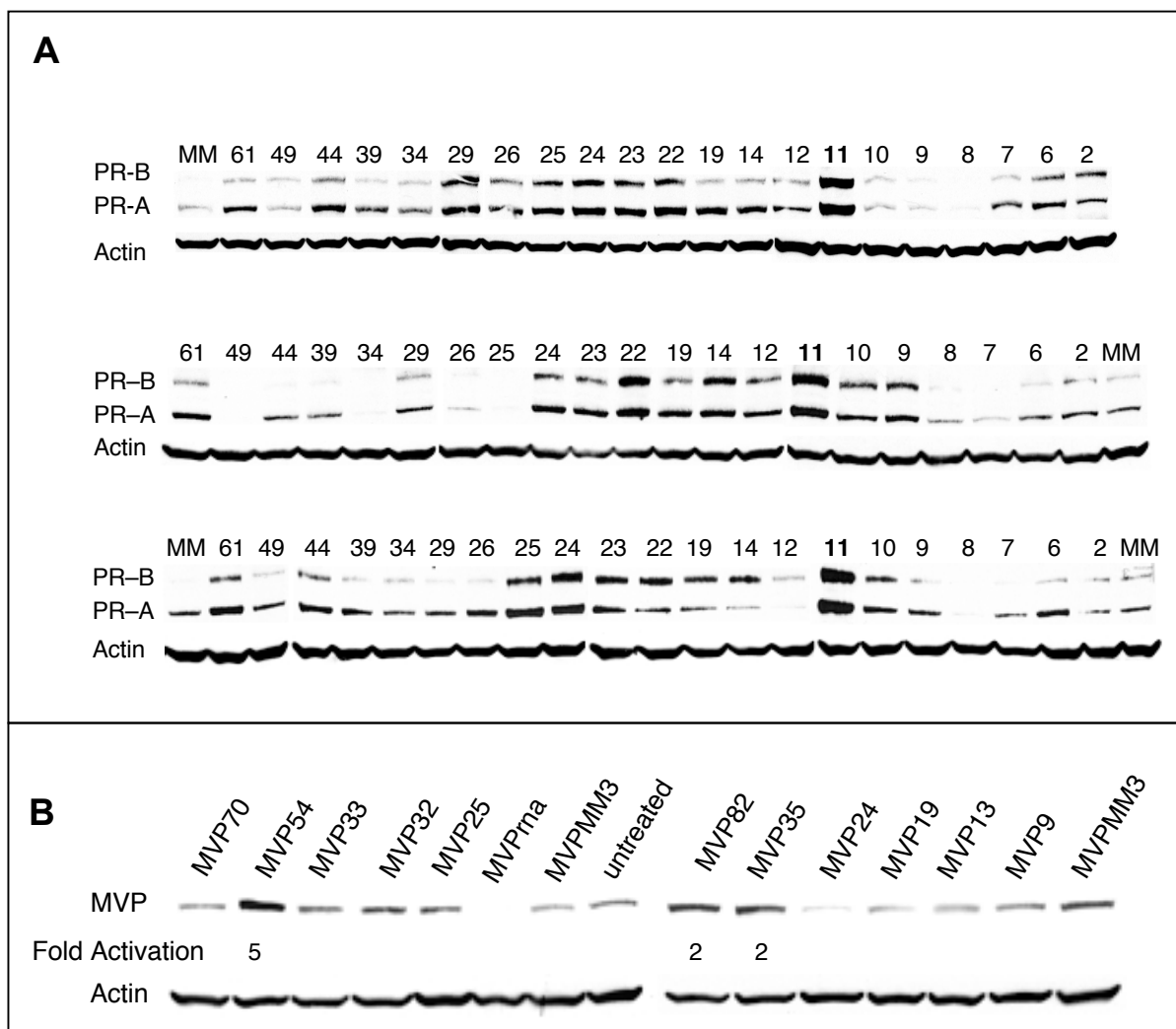


Supplementary Figure 2.



Supplementary Fig. 2. Reproducibility of probing the PR or MVP promoters with duplex RNAs (see also Fig. 2). **(A)** Three experiments showing the effect of duplex RNAs complementary to sequences throughout the -56 to +17 region of the PR promoter. Duplexes were present at 100 nM. Numbering denotes the most upstream base of the RNA. **(B)** Duplicate experiment showing the effect of duplex RNAs complementary to sequences throughout the -82 to +6 region of the MVP promoter. Duplexes were present at 100 nM. RNA sequences are in **Table 1**. MCF-7 cells were used for these experiments.