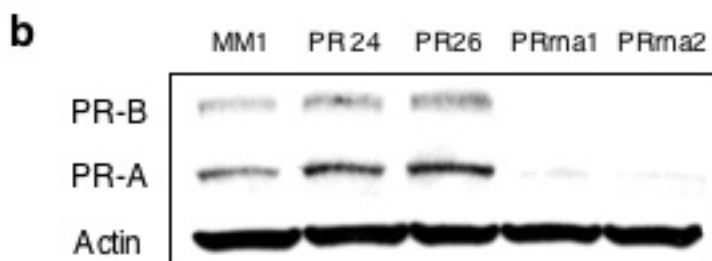
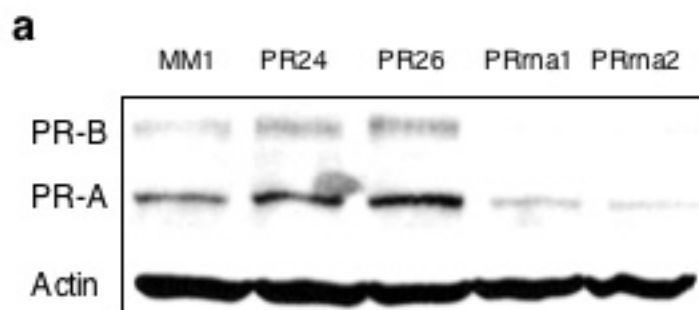


Supplementary Figure 1.



Supplementary Figure 1. Western analysis showing inhibition of PR in MCF-7 cells by mismatch containing RNA duplex MM1, agRNAs PR26 and PR24, and siRNAs PRma1 and PRma2. All RNAs were used at a concentration of **a**, 25 nM or **b**, 50 nM.