

importance of Long Island City is seen in the increase of its banks and branches...

ing business. The Long Island City Savings Bank has resources of \$4,750,000.

offices are at Broadway and Kent avenues. Manufacturers National Bank.

First National Bank OF BROOKLYN, N. Y.

Broadway and Kent Ave.

OFFICERS:

JOSEPH HUBER, President. MARSHALL S. DRIGGS, Vice President. WILLIAM S. IRISH, Cashier.

DIRECTORS:

Joseph Huber John W. Weber John J. Cooney Marshall S. Driggs Mortimer L. Reynolds Samuel H. Coombs Theodore F. Jackson Moses May Martin Joost

Individual and Firm Accounts Solicited.

Safe Deposit Vaults.

Boxes to Rent for \$5 a Year and Upwards.

THE WILLIAMSBURG SAVINGS BANK.



CORNER BROADWAY AND DRIGGS AVENUE, Borough of Brooklyn, City of New York.

Due Depositors \$51,500,000 Surplus Par Value of Securities \$6,479,612 Interest January 1st, 1908,

4%

TRUSTEES.

Extra B. Tuttle, Jeremiah V. Meserole, Peter M. Yocco, Edmund G. Buttner, Andrew D. Baird, Cornelius H. Hebout, Samuel M. Hecker, James R. Howe, John V. Jewell, James H. Post, James F. Broadnagen, Edward T. Horvill, Alfred Romer, Waldemar H. Hebout, Herbert F. Gunnison, Francis W. Young.

OFFICERS.

JEREMIAH V. MESEROLE, President. EZRA B. TUTTLE, Vice President. ANDREW D. BAIRD, Vice President. SAMUEL M. MEEKER, Secretary. WILLIAM F. BURNS, Cashier. CHAS. J. PASFIELD, Asst. Cashier.

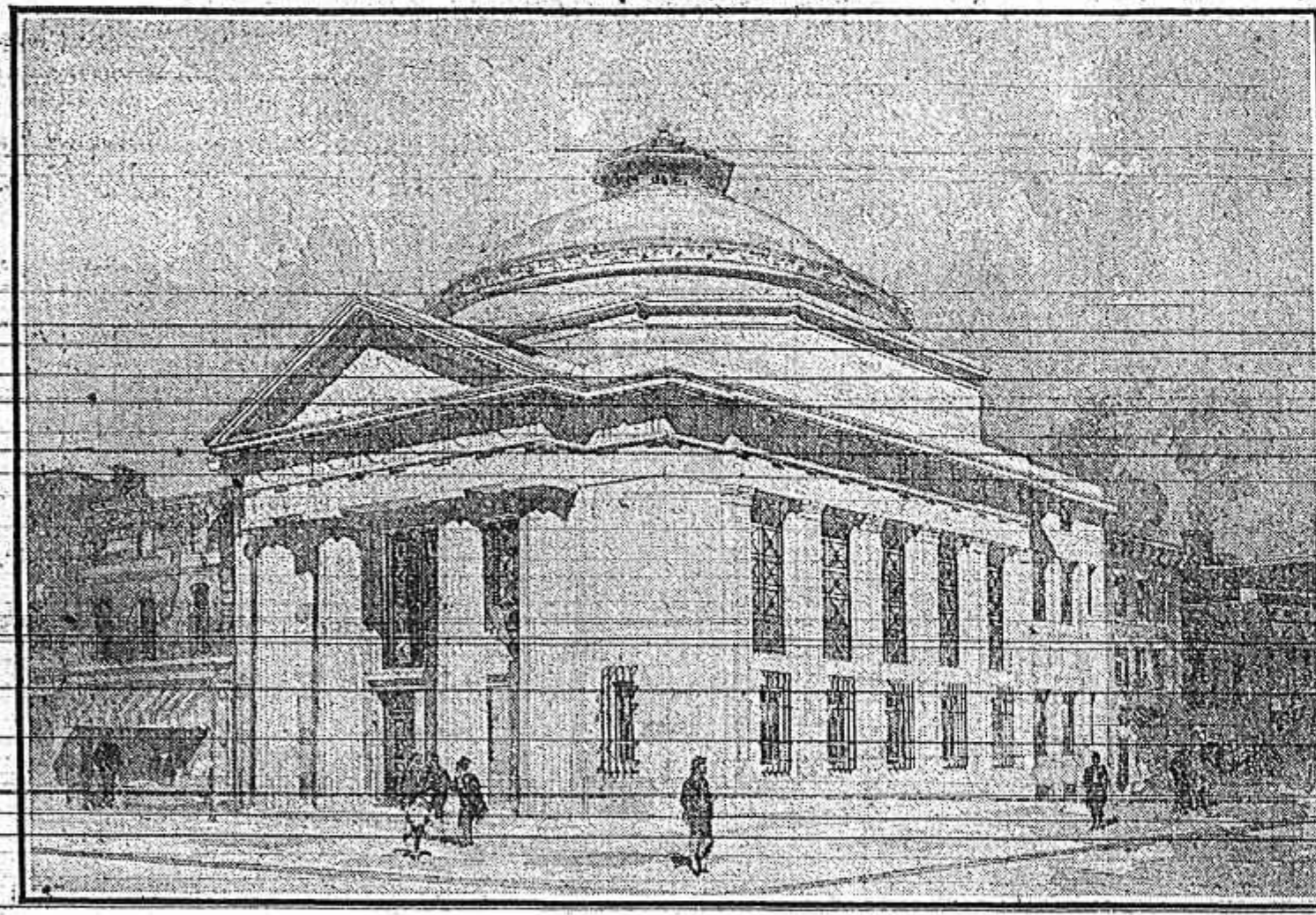
GROWTH OF FINANCIAL HOUSES IN EASTERN DISTRICT SECTION

To say that Brooklyn's prosperity in the banking world and its expansion in business and financial lines has in the past few years spread to the Eastern District section of the borough, is but putting it mildly.

The bank was organized in 1851, and thus is the oldest institution in the section. Old residents will remember the institution as having first been started in the basement of a church at the corner of South Third or Fourth streets.

There are at the present time only two state banks in operation in the section. These are the Broadway, situated at Broadway and Graham avenue, and the North Side, at 35 and 35 Grand street.

GREENPOINT SAVINGS BANK.



At the present day all this is changed. The growth of the banking world in the Eastern District has kept pace with the increase in business and population, and at the present time it is no longer to say that some of the strongest financial institutions in Brooklyn are located in the Eastern District.

ago it was decided to build an addition to the building occupied and since that time there has been a long way in order to do business with a business bank or a trust company.

insurance and Trust Company of Manhattan has a branch at 354 Broadway. The Williamsburg Trust, one of the largest in the city, with offices on the new Bridge Plaza, is now in the hands of a receiver, but there is every indication that such a condition is only temporary.

to become one of the large financial institutions in the borough. Since it was organized the company has built up deposits according to its last official report of nearly \$1,000,000, despite the fact that there were some withdrawals during the October and November crisis.

Smaller Financial Concerns. There are also along Broadway many smaller financial concerns. One of the features of the part of that thoroughfare between the ferry and Bedford avenue is the numerous insurance companies that have either a main office or a branch office along the route mentioned.

HOW THE EASTERN DISTRICT IS COVERED BY THE CHURCHES

To those who contemplate locating in the Eastern District and in Greenpoint, to whom many considerations of location and accommodation are offered, it is important to know that the territory is well covered with places in which the people may worship, according to the dictates of their consciences, the denominations being all well represented.

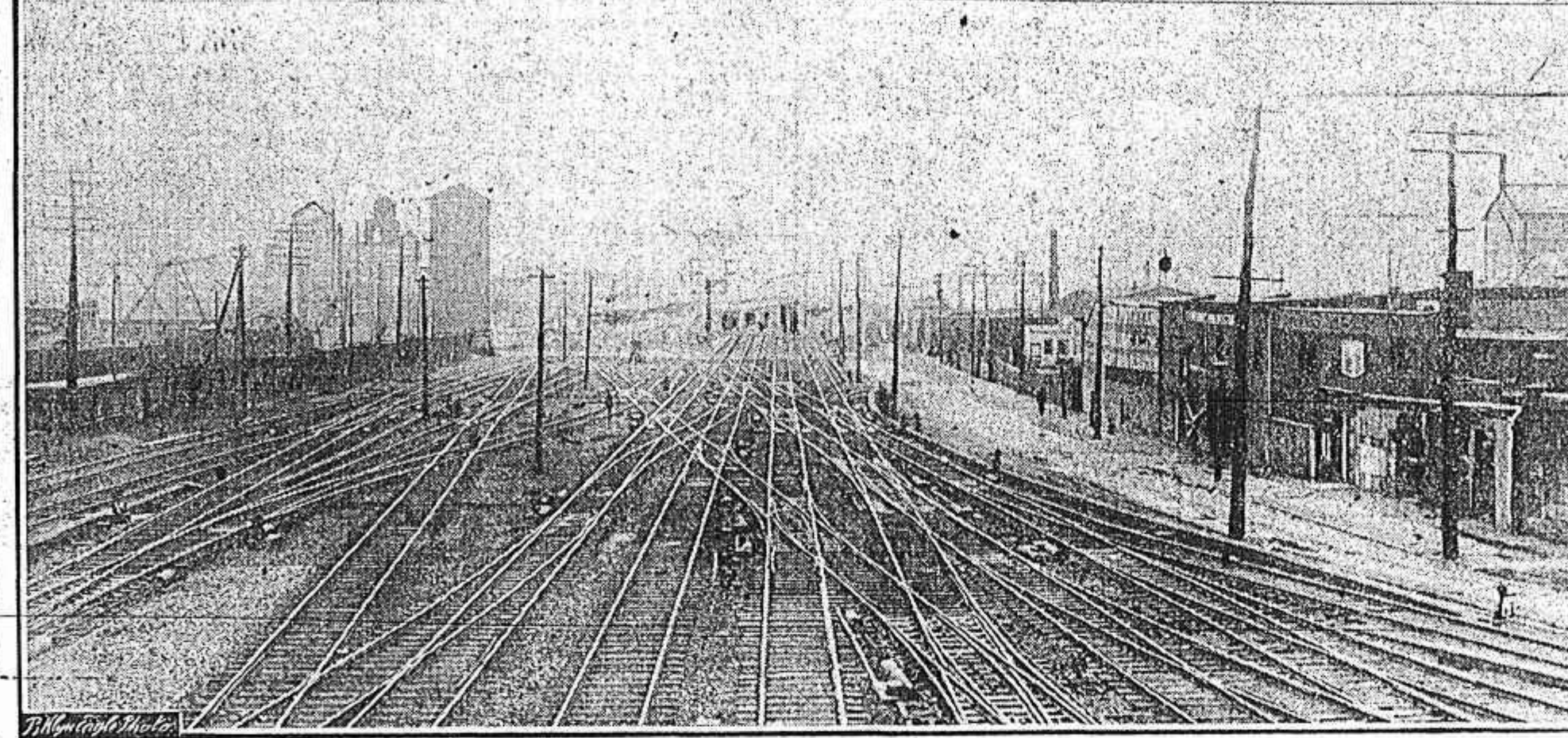
is the Eastern District Branch of the Young Men's Christian Association, the Williamsburg Central Mission and the Brooklyn Industrial School, for other churches of work.

At the present day all this is changed. The growth of the banking world in the Eastern District has kept pace with the increase in business and population, and at the present time it is no longer to say that some of the strongest financial institutions in Brooklyn are located in the Eastern District.

At the present day all this is changed. The growth of the banking world in the Eastern District has kept pace with the increase in business and population, and at the present time it is no longer to say that some of the strongest financial institutions in Brooklyn are located in the Eastern District.

At the present day all this is changed. The growth of the banking world in the Eastern District has kept pace with the increase in business and population, and at the present time it is no longer to say that some of the strongest financial institutions in Brooklyn are located in the Eastern District.

LONG ISLAND RAILROAD YARD FROM BRIDGE.



Growth in Banking Business.

The growth of the section in the banking world is represented in the following table, which shows the deposits of the important institutions at the end of 1907 and the deposits at the present day:

Table with columns for National Banks, State Banks, and Savings Banks, listing various banks and their deposits for 1907 and 1908.

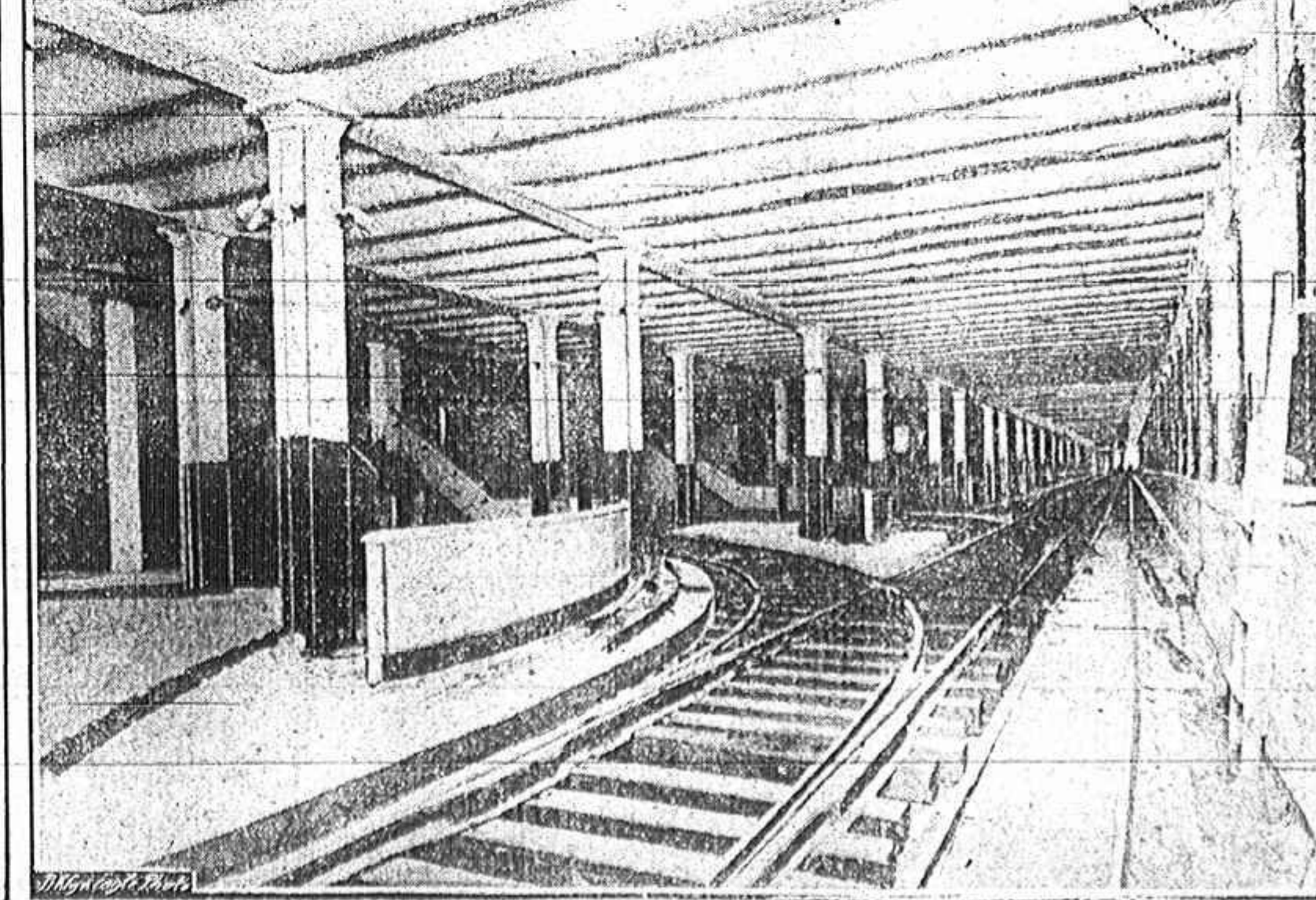
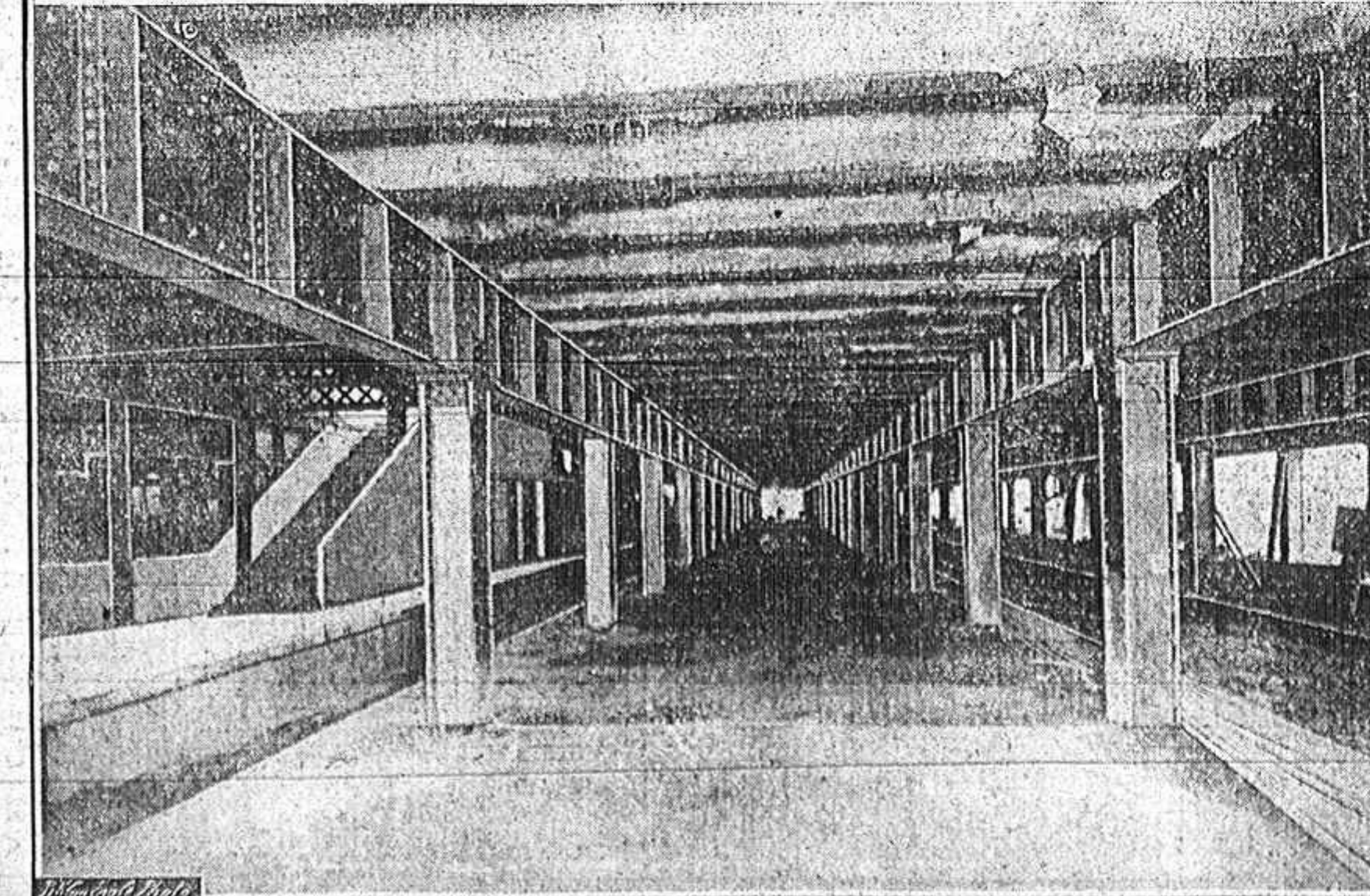
Bank was organized, the financial men of this section saw that there should be further banking facilities. Accordingly in 1902 the First National Bank was organized.

It serves is one to be proud of. The deposits of the institution have in the past eight years increased over 100 per cent.

corner of South Fifth street; Immanuel Lutheran, South Ninth street, near Driggs avenue; St. Peter's, Lutheran, Rodney street, near South Third; South Second Street Methodist, near Driggs avenue; South Third Street Presbyterian, near Driggs avenue; St. Mary, Queen of Angels, Catholic, and St. Francis Monastery, South Fourth street; St. Peter and Paul, Catholic, Wythe avenue, near South Second street, and the Congregation Beth Jacob, South Third street. Then there

North Sixth street; the Convent of Nuns of St. Dominic, and St. Dominic's School, Havemeyer street. There is Y. M. C. A. work and the Union Mission. Fifteenth Ward—Ainslie Street Baptist Church, near Graham avenue; Grace Episcopal, Consolida street, near Lorimer street; St. John's, Lutheran, Mauler street; Union Baptist Church; First Reformed Presbyterian, South First street, near Rodney; Old Bushwick Reformed, Bushwick avenue, near North Second

SUBWAY TERMINAL IN DELANCEY STREET FOR WILLIAMSBURG BRIDGE "L" AND TROLLEY LINES.



Bridge L Terminal.

View of Bridge L Terminal.