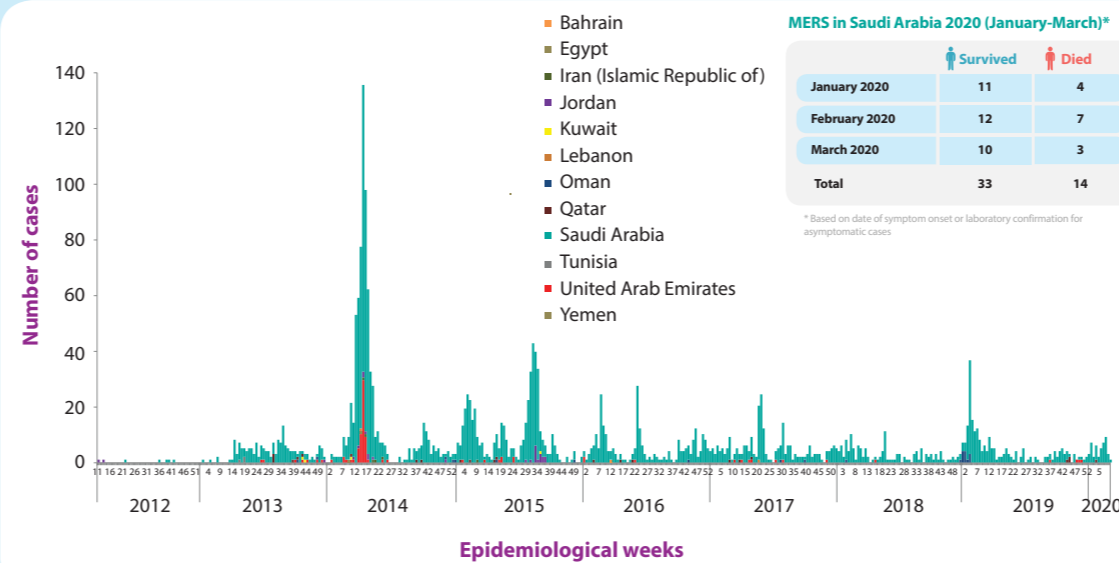


Highlights

- At the end of March 2020, a total of 2553 laboratory-confirmed cases of Middle East respiratory syndrome (MERS), including 876 associated deaths (case-fatality rate: 34.31%) were reported globally; the majority of these cases were reported from Saudi Arabia (2154 cases, including 798 related deaths with a case-fatality rate of 37.05%).
- During the month of March, a total of 15 laboratory-confirmed cases of MERS were reported globally. All the 15 cases were reported from Saudi Arabia with 5 associated death. There were no cluster of cases reported this month. Two case had history of contact with camels and/or consumption of their raw milk while the exposure history of the other cases is still under investigation. Only two cases reported this month were female and one case reported was non-national. No healthcare workers were affected this month.
- The demographic and epidemiological characteristics of reported cases, when compared during the same corresponding period of 2015 to 2020, do not show any significant difference or change.
- The age group 50–59 years continues to be at the highest risk for acquiring infection of primary cases. The age group 30–39 years is most at risk for secondary cases. The number of deaths is higher in the age group 50–59 years for primary cases and 70–79 years for secondary cases.

Distribution of MERS reported cases from EMR by week of onset, 2012-2020



Summary

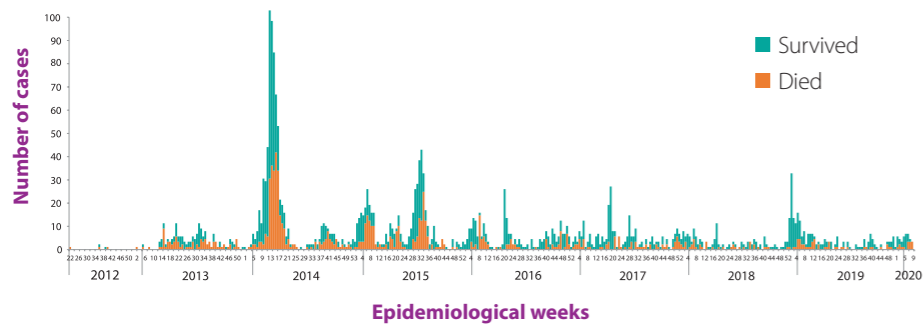
2553 Laboratory-confirmed cases reported since April 2012

876 deaths reported since April 2012

27 countries reported cases globally

12 countries reported cases since April 2012 in the Eastern Mediterranean Region

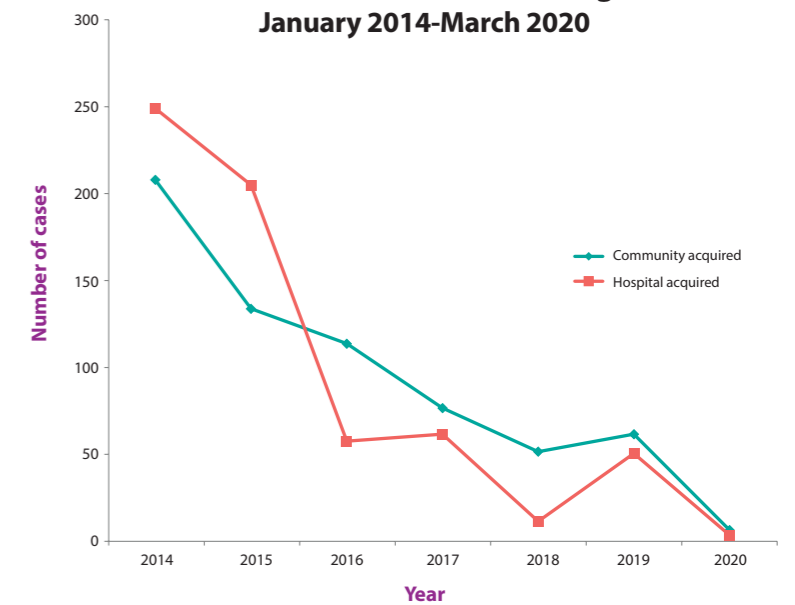
MERS cases reported from the Kingdom of Saudi Arabia by week of symptoms onset June 2012–March 2020



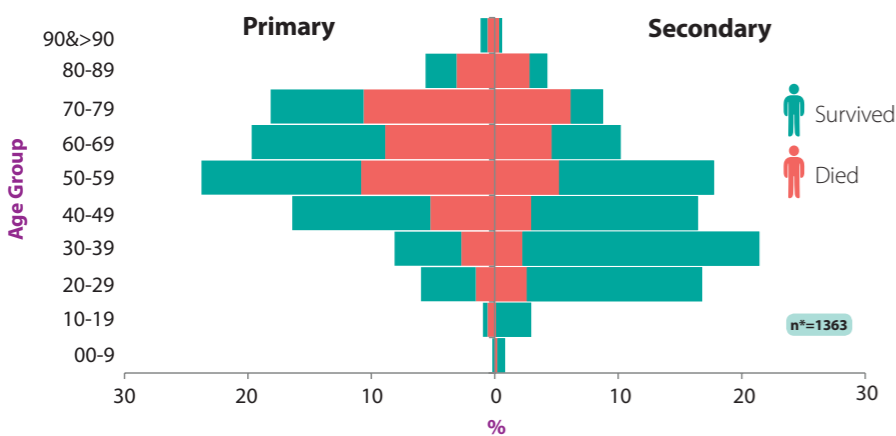
Characteristics of MERS cases reported from Kingdom of Saudi Arabia June 2012–March 2020

Type of case	2012	2013	2014	2015	2016	2017	2018	2019	2020	Grand Total
Missing		1	15	102	103	68	52	56	3	400
Primary	3	36	164	52	75	70	54	57	7	518
Secondary	2	93	264	222	60	90	35	75	4	845
Unknown		28	219	78	11	5	1	16	33	391
Grand Total	5	158	662	454	249	233	142	204	47	2154

Community versus hospital acquired MERS cases in Eastern Mediterranean Region January 2014–March 2020



Age and fatality distribution of primary and secondary cases of MERS reported from Saudi Arabia June 2012–March 2020



Epidemiological characteristics of MERS cases reported globally between October–March 2015 and October–March 2020

Characteristic	Oct 14–Mar 15	Oct 15–Mar 16	Oct 16–Mar 17	Oct 17–Mar 18	Oct 18–Mar 19	Oct 19–Mar 20
Number	232	123	120	105	139	82
Median age in years	55	53	57	55	51	57
Gender (% male)	75	71	77	76	76	80
% of Primary Cases	24	21	42	34	32	23
% of Secondary cases	36	36	10	13	50	10
(%) of Unknown Contact History	38	3	2	0	0	58
% of HCW	11	11	4	4	12	6
% Fatal	46	36	36	35	17	29

Cases of MERS in healthcare workers reported from Saudi Arabia, January 2013–March 2020

