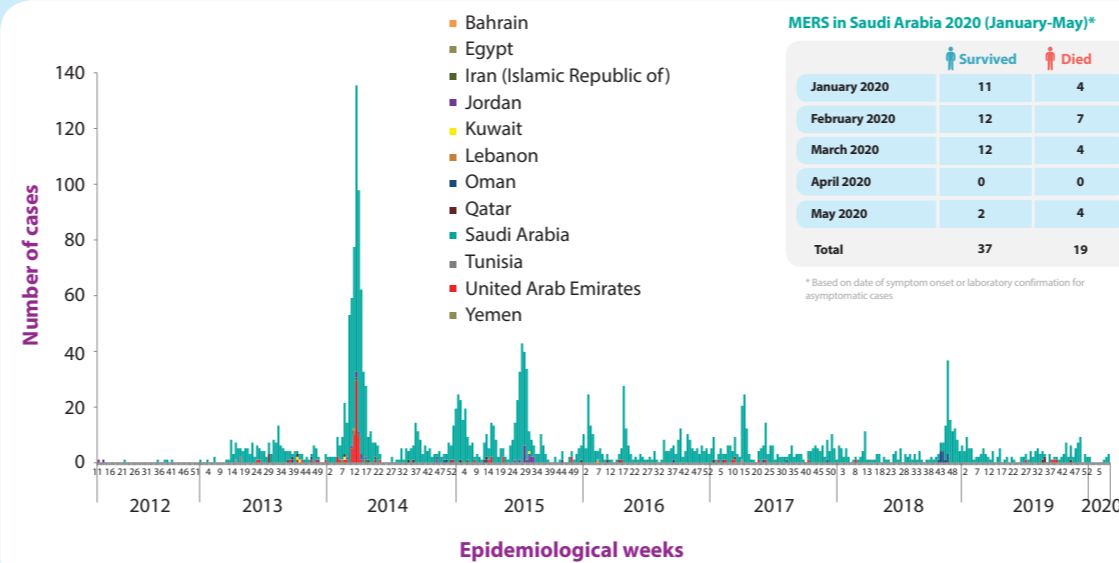


Highlights

- At the end of May 2020, a total of 2562 laboratory-confirmed cases of Middle East respiratory syndrome (MERS), including 881 associated deaths (case-fatality rate: 34.39%) were reported globally; the majority of these cases were reported from Saudi Arabia (2163 cases, including 803 related deaths with a case-fatality rate of 37.12%).
- During the month of May, a total of 6 laboratory-confirmed cases of MERS were reported globally. All the 6 cases were reported from Saudi Arabia with four associated deaths. The 6 reported cases were linked to a hospital cluster. 5 cases had history of contact with first reported case (probable index case). None of reported cases were female nor non-national. One healthcare worker was infected.
- The demographic and epidemiological characteristics of reported cases, when compared during the same corresponding period of 2015 to 2020, do not show any significant difference or change.
- The age group 50–59 years continues to be at the highest risk for acquiring infection of primary cases. The age group 30–39 years is most at risk for secondary cases. The number of deaths is higher in the age group 50–59 years for primary cases and 70–79 years for secondary cases.

Distribution of MERS reported cases from EMR by week of onset, 2012-2020



Summary

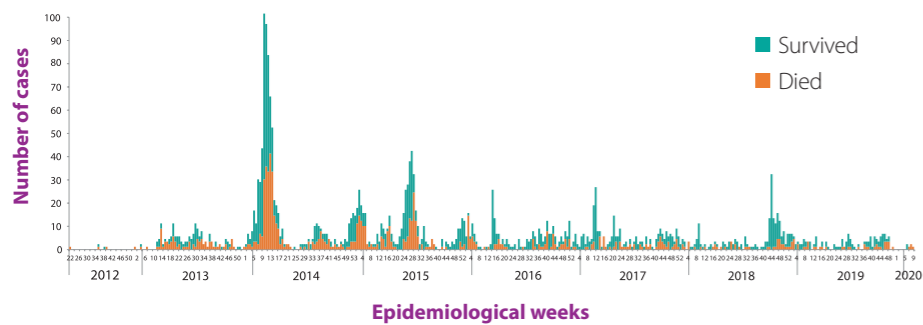
2562 Laboratory-confirmed cases reported since April 2012

881 deaths reported since April 2012

27 countries reported cases globally

12 countries reported cases since April 2012 in the Eastern Mediterranean Region

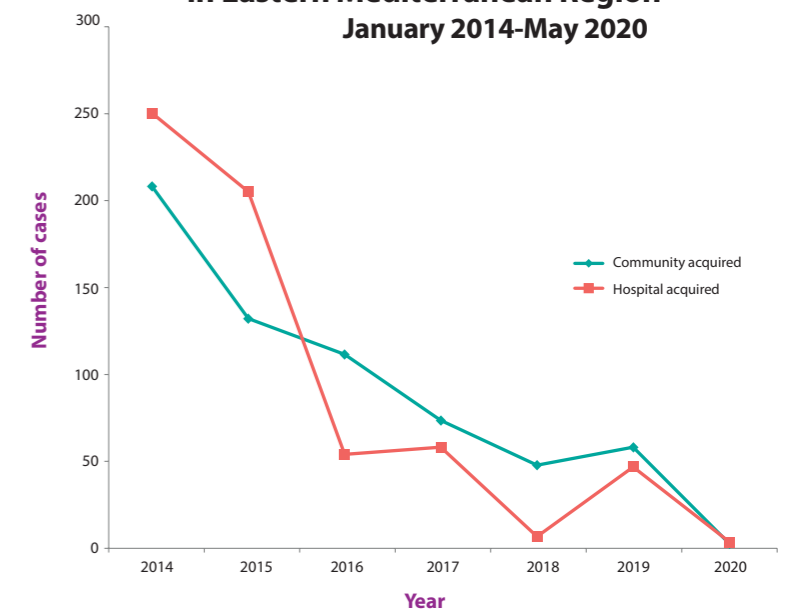
MERS cases reported from the Kingdom of Saudi Arabia by week of symptoms onset June 2012–May 2020



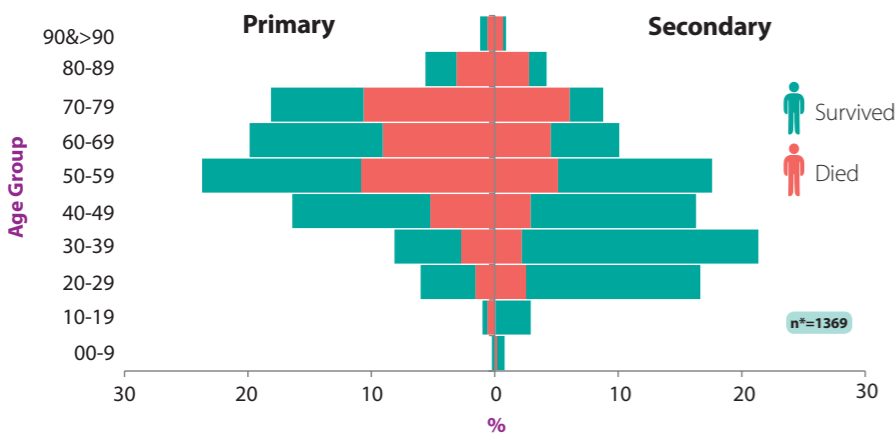
Characteristics of MERS cases reported from Kingdom of Saudi Arabia June 2012–May 2020

Type of case	2012	2013	2014	2015	2016	2017	2018	2019	2020	Grand Total
Missing		1	15	102	103	68	52	56	6	403
Primary	3	36	164	52	75	70	54	57	8	519
Secondary	2	93	264	222	60	90	35	75	9	850
Unknown		28	219	78	11	5	1	16	33	391
Grand Total	5	158	662	454	249	233	142	204	56	2163

Community versus hospital acquired MERS cases in Eastern Mediterranean Region January 2014–May 2020



Age and fatality distribution of primary and secondary cases of MERS reported from Saudi Arabia June 2012–May 2020



Epidemiological characteristics of MERS cases reported globally between December–May 2015 and December–May 2020

Characteristic	Dec 14 - May 15	Dec 15 - May 16	Dec 16 - May 17	Dec 17 - May 18	Dec 18 - May 19	Dec 19 - May 20
Number	279	114	123	104	168	61
Median age in years	55	55	55	54	51	58
Gender (% male)	74	82	78	79	76	80
% of Primary Cases	19	30	38	31	25	15
% of Secondary cases	37	26	23	24	49	15
(%) of Unknown Contact History	28	4	6	0	0	56
% of HCW	10	10	10	5	13	7
% Fatal	43	33	30	33	22	38

Cases of MERS in healthcare workers reported from Saudi Arabia, January 2013–May 2020

