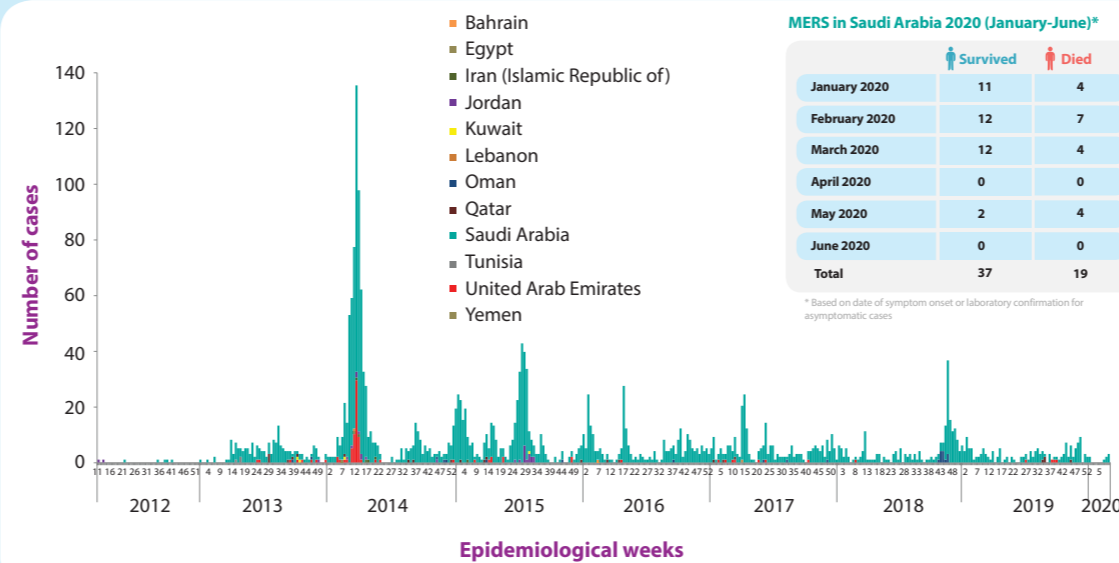


## Highlights

- At the end of June 2020, a total of 2562 laboratory-confirmed cases of Middle East respiratory syndrome (MERS), including 881 associated deaths (case-fatality rate: 34.39%) were reported globally; the majority of these cases were reported from Saudi Arabia (2163 cases, including 803 related deaths with a case-fatality rate of 37.12%).
- During the month of June, no cases were reported.
- The demographic and epidemiological characteristics of reported cases, when compared during the same corresponding period of 2015 to 2020, do not show any significant difference or change.
- The age group 50–59 years continues to be at the highest risk for acquiring infection of primary cases. The age group 30–39 years is most at risk for secondary cases. The number of deaths is higher in the age group 50–59 years for primary cases and 70–79 years for secondary cases.

## Distribution of MERS reported cases from EMR by week of onset, 2012-2020



## Summary

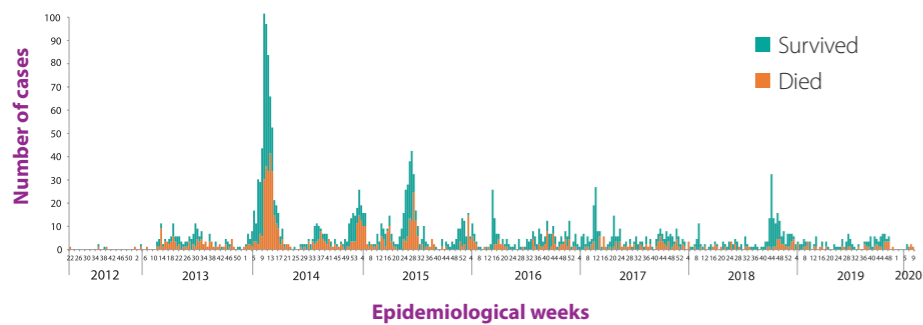
**2562** Laboratory-confirmed cases reported since April 2012

**881** deaths reported since April 2012

**27** countries reported cases globally

**12** countries reported cases since April 2012 in the Eastern Mediterranean Region

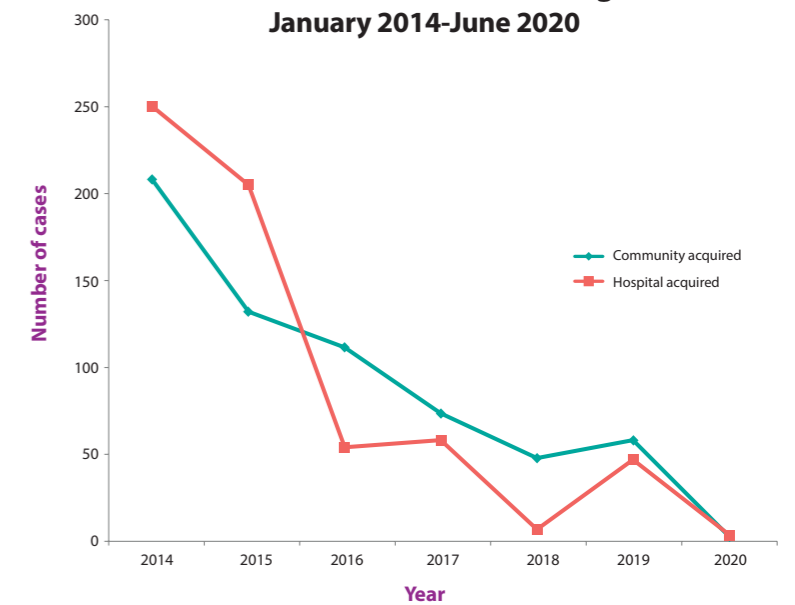
## MERS cases reported from the Kingdom of Saudi Arabia by week of symptoms onset June 2012–June 2020



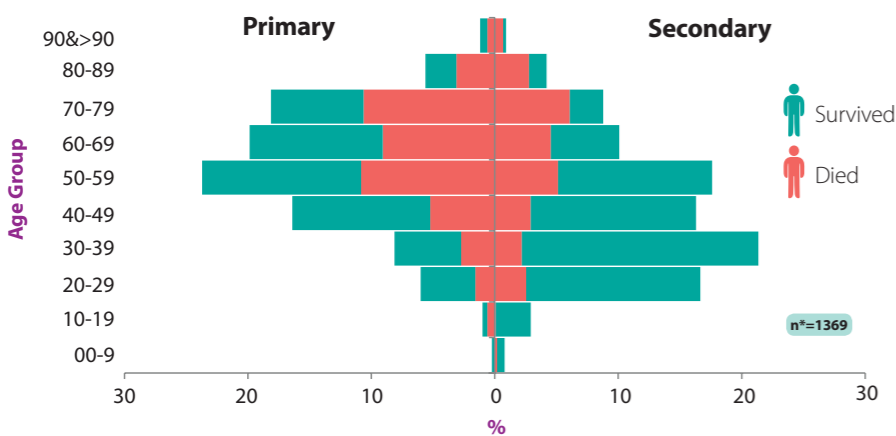
## Characteristics of MERS cases reported from Kingdom of Saudi Arabia June 2012–June 2020

Type of case	2012	2013	2014	2015	2016	2017	2018	2019	2020	Grand Total
Missing		1	15	102	103	68	52	56	6	403
Primary	3	36	164	52	75	70	54	57	8	519
Secondary	2	93	264	222	60	90	35	78	9	850
Unknown		28	219	78	11	5	1	16	33	391
<b>Grand Total</b>	<b>5</b>	<b>158</b>	<b>662</b>	<b>454</b>	<b>249</b>	<b>233</b>	<b>142</b>	<b>204</b>	<b>56</b>	<b>2163</b>

## Community versus hospital acquired MERS cases in Eastern Mediterranean Region January 2014–June 2020



## Age and fatality distribution of primary and secondary cases of MERS reported from Saudi Arabia June 2012–June 2020



## Epidemiological characteristics of MERS cases reported globally between January–June 2015 and January–June 2020

Characteristic	Jan - Jun 15	Jan - Jun 16	Jan - Jun 17	Jan - Jun 18	Jan - Jun 19	Jan - Jun 20
Number	420	161	153	96	170	57
Median age in years	55	4	51	54	51	58
Gender (% male)	68	71	73	80	76	81
% of Primary Cases	10	26	29	32	25	16
% of Secondary cases	27	31	46	26	49	16
(%) of Unknown Contact History	19	7	5	0	0	58
% of HCW	12	17	24	5	14	7
% Fatal	32	30	22	28	24	33

## Cases of MERS in healthcare workers reported from Saudi Arabia, January 2013–June 2020

