

The English Index of Multiple Deprivation (IMD) 2015

The official measure of relative deprivation for small areas

The IMD ranks each small area in England from:

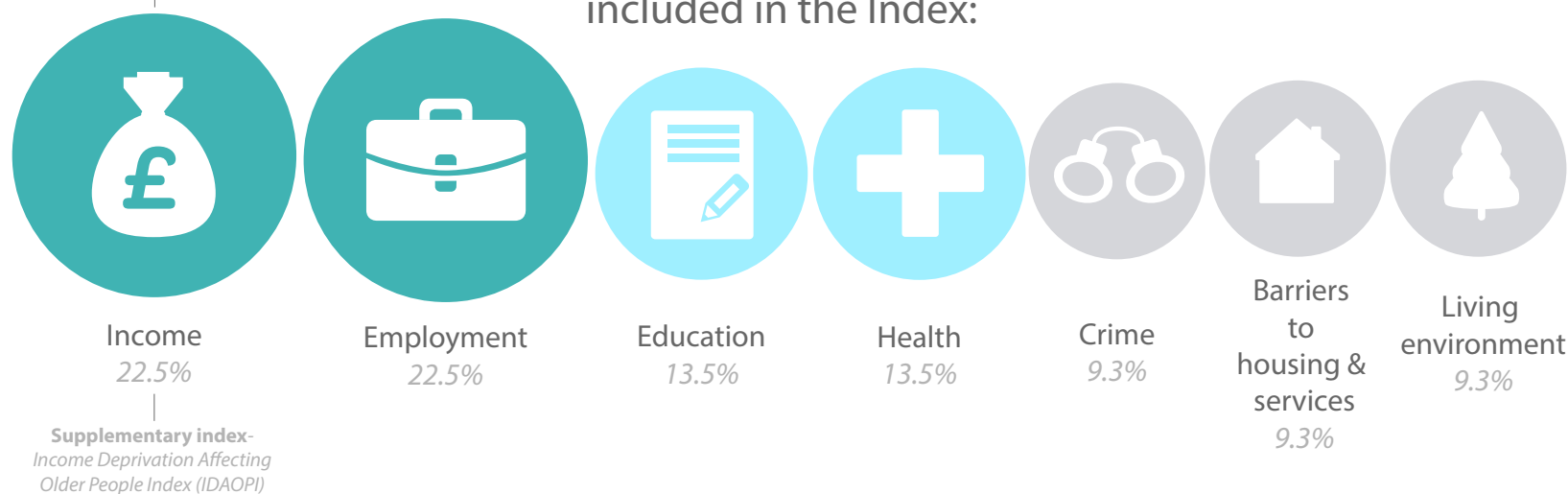
1st
most
deprived area



32,844th
least
deprived area

32,844 small areas (called Lower-layer Super Output Areas) in England with an average of 1,500 residents each

7 domains of deprivation included in the Index:



HOW CAN IT BE USED?



- | | |
|---|--|
| comparing small areas across England | quantifying how deprived a small area is |
| identifying the most deprived small areas | identifying deprived people |
| exploring the domains (or types) of deprivation | saying how affluent a place is |
| comparing larger areas e.g. local authorities | comparing with small areas in other UK countries |
| looking at changes in relative deprivation between versions (i.e. changes in ranks) | measuring real change in deprivation over time |



The English Index of Multiple Deprivation (IMD) 2015

The official measure of relative deprivation for small areas

Findings are available at:

<https://www.gov.uk/government/statistics/english-indices-of-deprivation-2015>

