

RESEARCH ARTICLE

Open Access

# Genetic diversity and domestication origin of tea plant *Camellia taliensis* (Theaceae) as revealed by microsatellite markers

Dong-wei Zhao<sup>1,2†</sup>, Jun-bo Yang<sup>3†</sup>, Shi-xiong Yang<sup>1\*</sup>, Kenji Kato<sup>4</sup> and Jian-ping Luo<sup>5</sup>

## Abstract

**Background:** Tea is one of the most popular beverages in the world. Many species in the *Thea* section of the *Camellia* genus can be processed for drinking and have been domesticated. However, few investigations have focused on the genetic consequence of domestication and geographic origin of landraces on tea plants using credible wild and planted populations of a single species. Here, *C. taliensis* provides us with a unique opportunity to explore these issues.

**Results:** Fourteen nuclear microsatellite loci were employed to determine the genetic diversity and domestication origin of *C. taliensis*, which were represented by 587 individuals from 25 wild, planted and recently domesticated populations. *C. taliensis* showed a moderate high level of overall genetic diversity. The greater reduction of genetic diversity and stronger genetic drift were detected in the wild group than in the recently domesticated group, indicating the loss of genetic diversity of wild populations due to overexploitation and habitat fragmentation. Instead of the endangered wild trees, recently domesticated individuals were used to compare with the planted trees for detecting the genetic consequence of domestication. A little and non-significant reduction in genetic diversity was found during domestication. The long life cycle, selection for leaf traits and gene flow between populations will delay the emergence of bottleneck in planted trees. Both phylogenetic and assignment analyses suggested that planted trees may have been domesticated from the adjacent central forest of western Yunnan and dispersed artificially to distant places.

**Conclusions:** This study contributes to the knowledge about levels and distribution of genetic diversity of *C. taliensis* and provides new insights into genetic consequence of domestication and geographic origin of planted trees of this species. As an endemic tea source plant, wild, planted and recently domesticated *C. taliensis* trees should all be protected for their unique genetic characteristics, which are valuable for tea breeding.

**Keywords:** *Camellia taliensis*, Domestication, Genetic diversity, Microsatellite, Tea plant

## Background

Plant domestication is one of the most important events in human history. People still depend on the staple cereal crops that were domesticated more than 6000 years ago in Central America [1], the Near East [2,3] and Eastern Asia [4]. In the initial domestication, the cultivated traits and genetic bottleneck may emerge in cultivars after over 1000

generations [3,5]. Reductions in genetic diversity have been found in cultivated rice [6,7], maize [8], soyabean [9,10] and other crops [11,12]. However, several instances in which no decline in the genetic diversity of planted populations occurred serve as a reminder of how complicated the situation is [13]. The biological nature of the plant whether it is annual or perennial, along with clonal propagation or sexual breeding, all have an effect on the results of domestication [14]. Differences in domestication activities, such as single or multiple domestication, also cause differences in the levels of genetic diversity in cultivars [15,16].

\* Correspondence: shxyang@mail.kib.ac.cn

†Equal contributors

<sup>1</sup>Key Laboratory for Plant Diversity and Biogeography of East Asia, Kunming Institute of Botany, Chinese Academy of Sciences, Kunming, Yunnan 650201, China

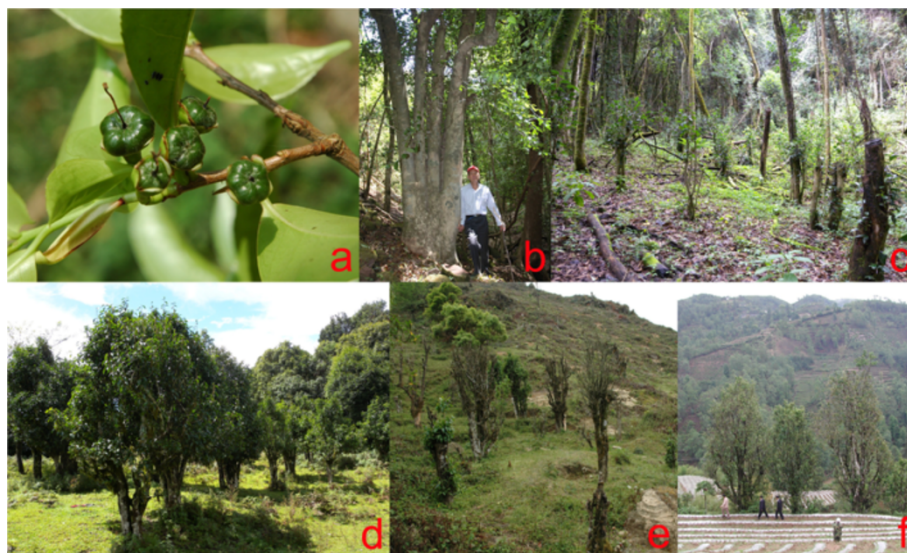
Full list of author information is available at the end of the article

Both vital food plants and species that can be used for medicine or beverages, such as tea, have been domesticated for convenience. Tea was used at least as far back as 2,000 years ago in China [17]. It is one of the most popular beverages and has generated health, wealth and job opportunities throughout the world [18-20]. There are approximately 120 species in the genus *Camellia* [21], but tea in its commercial beverage form is usually produced from *C. sinensis* (L.) O. Kuntze. Since about 400 years ago when the first tea was introduced into Europe [18], *C. sinensis* has been gradually familiar to worldwide people. However, *C. taliensis* (W. W. Smith) Melchior, an important plant for use in producing tea, has only been recognized outside of its native areas for a few decades [22,23]. Several studies have investigated the genetic diversity of wild and planted trees of *C. taliensis* [24-26], and some have detected a reduction in chloroplast DNA (cpDNA) diversity during domestication [25,26]. But none of these studies has given more details on the domestication origin of this plant. Though *C. sinensis* is cultivated worldwide, there has been almost no genetic research conducted to answer the domestication questions of it, because the credible wild population of *C. sinensis* has been seldom found [27]. However, *C. taliensis* provides a unique opportunity to document the domestication origin of tea plants.

*C. taliensis*, a shrub or small tree (2–10 m) native to the subtropical mountain evergreen forests at altitudes of 1300–2700 m, is endemic from western Yunnan province of China to northern Myanmar [21]. It is generally distinguishable from *C. sinensis* by its glabrous or sparsely pubescent terminal buds and five-loculed ovary

(Figure 1a). *C. sinensis* has silvery-grey sericeous terminal buds and a three-loculed ovary [21]. In western Yunnan where it is mainly found, *C. taliensis* is called 'ye cha' (wild tea) or 'ben shan cha' (local mountain tea) by the local people (Figure 1b and c) [26]. Its leaf has been collected to produce beverage that is alike the tea from *C. sinensis* var. *assamica* but has its specific characteristic constituents [28,29]. The tea probably made from *C. taliensis* was recorded 1300 years ago [17,30], and this species has been cultivated throughout western Yunnan at least for hundreds years [30]. However, many tea gardens of *C. taliensis* have been replaced by the gardens of *C. sinensis* var. *assamica* or disappeared, and the current cultivated plants of *C. taliensis* are mainly located in the Lancang River basin and Dali city [25,30].

About a dozen years ago, due to the high price that 'wild tea' commanded in the local market, a large number of *C. taliensis* trees in the natural forest were cut down to collect leaves [24,26]. And the phenomena of directly domesticating wild *C. taliensis* trees by clearing out the other plants on a parcel of natural forest and keeping only specimens of *C. taliensis* (Figure 1d) or digging out the wild trees and planting them in gardens (Figure 1e) had been found locally. We call these directly domesticated trees as 'recently domesticated'. The cultivated trees derived from the seeds that gathered in tea gardens are called 'planted' (Figure 1f) and trees lived in the natural forest are called 'wild' (Figure 1b and c). Unlike the cultivated traits such as non-shattering spikelet in rice [4], tea plants do not have the clear morphological characters that may differentiate cultivated from wild trees. Rigorous field investigations and local social



**Figure 1** *Camellia taliensis*. (a) A branch with young fruit showing the five-loculed ovary, (b) wild tree, (c) wild trees after felling, (d) *in situ* recently domesticated trees, (e) *ex situ* recently domesticated trees, (f) planted trees. Picture (c) was taken by DWZ; all other pictures were taken by SXY.

surveys are implemented to differentiate between cultivated and wild form of tea plants.

The archaeological evidence is usually crucial to document the domestication origins [4,31]. However, the archaeological findings associated with crop origins are limited. Widely used molecular genetics approaches such as microsatellites can now be used to determine domestication origins [32] to produce a more detailed crop history [16]. It will provide an accurate outline of the domestication process when genetic analyses are consistent with ethnobotanical approaches in the research [14]. In the present study, we provide the analyses of genetic diversity and population structure in the wild, planted and recently domesticated populations of *C. taliensis* based on 14 nuclear microsatellite makers. We aimed to assess the relative levels of genetic diversity of *C. taliensis* compared to that of *C. sinensis*, which have been investigated using landraces and improved cultivars [33,34]. Then, we discussed whether reduction of genetic diversity occurred in the planted populations of *C. taliensis* relative to the wild populations, and estimated the genetic consequence of domestication. Finally, we addressed the geographical origin of planted trees, and tried to discuss more details about the domestication process. As an endemic tea source plant, knowledge of population genetics and domestication history of *C. taliensis* is of great importance for the effective conservation and utilization of the landraces and wild germplasm and to facilitate the genetic improvement of tea plants.

## Results

### Genetic diversity and variance

A total of 178 alleles were detected in 25 populations of *C. taliensis* for the 14 loci analysed (Additional file 1). The average number of alleles per locus was 12.7. There were 15 private alleles in nine populations, including 12 alleles in the wild group and three alleles in the recently domesticated group. There were no private alleles in the planted group (Table 1), suggesting a common gene pool shared by planted and natural trees. The rare alleles (frequency  $\leq 0.05$ ) [35] accounted for 109 (61.2%) of the total 178 alleles revealed in all loci.

*C. taliensis* showed a moderate high level of overall gene diversity ( $H_S = 0.597$ ) (Table 1). For each population analysed, the highest level of genetic diversity was found in the YJD population (allelic richness corrected for sample size:  $A = 5.524$ ;  $H_S = 0.682$ ), and the lowest in the JCW population ( $A = 3.428$ ,  $H_S = 0.541$ ). Inbreeding coefficient ( $F_{is}$ ) values of 25 populations ranged from 0.029 to 0.275. The global  $F_{is}$  was 0.160, suggesting a low inbreeding rate in the populations of *C. taliensis*.

In the group comparison tests, the wild group contained the greatest number of rare alleles across all three

groups: only nine were absent from the wild group, whereas 40 were absent from the planted trees ( $\chi^2 = 25.30$ ,  $df = 1$ ,  $P < 0.001$ ) and 44 were absent from the recently domesticated individuals ( $\chi^2 = 30.54$ ,  $df = 1$ ,  $P < 0.001$ ). There was no significant difference in the number of rare alleles between the planted and recently domesticated groups ( $\chi^2 = 0.31$ ,  $df = 1$ ,  $P = 0.578$ ) (Table 2).  $A$  was significantly lower ( $P_{\text{one tailed}} < 0.05$ , 5000 permutations) in the wild group (4.400) than in the planted (4.911) or recently domesticated (4.993) groups.  $H_S$  was significantly higher ( $P_{\text{one tailed}} = 0.017$ ) in the recently domesticated group (0.634) than in the wild group (0.583). The group comparison tests of  $A$  and  $H_S$  indicated that wild populations had a lower level of genetic diversity compared with recently domesticated and planted populations. The observed heterozygosity ( $H_O$ ) and  $F_{is}$  showed no significant differences between the three groups ( $P_{\text{one tailed}} > 0.05$ ). The genetic differentiation ( $F_{st}$ ) was 70% higher in the wild group than in the planted or recently domesticated groups ( $P_{\text{one tailed}} \leq 0.01$ ) (Table 2), indicating the more genetic variation in the larger sample of wild group.

Subsample genetic comparisons were performed between the selected adjacent populations. In terms of the number of rare alleles absent, there was no significant difference detected in YXP and LLP versus YXW and GSW ( $\chi^2 = 3.19$ ,  $df = 1$ ,  $P = 0.074$ ) or in OJW and YJW versus OJD and YJD ( $\chi^2 = 3.39$ ,  $df = 1$ ,  $P = 0.065$ ). No significant difference was found in the comparisons to the other genetic parameters, including  $A$ ,  $H_S$ ,  $H_O$ ,  $F_{is}$  and  $F_{st}$  (Table 2), suggesting the similar levels of genetic diversity, inbreeding and genetic differentiation between adjacent populations.

In the Analysis of molecular variance (AMOVA), no variation was found among wild, planted and primary domesticated groups, suggesting the same genetic basis of these groups. Most of variation was detected within populations (70.6% within individuals and 16.5% among individuals within populations) and 12.9% of variation was found among populations (Table 3).

### Genetic drift of each population

The mean  $F$  values of the wild populations ranged from 0.0991 (MHW) to 0.2686 (JCW) with an average of 0.1656. The mean  $F$  values of the recently domesticated populations ranged from 0.0673 (YJD) to 0.1221 (LXD) with an average of 0.1072. Population YXP (0.0677) and DLP (0.1702) had the maximum and minimum mean  $F$  values, respectively, of the planted populations, and the average  $F$  value for this group was 0.1108 (Additional file 2). The genetic drift values suggested that the genetic composition of the wild populations had changed about 1.5-fold faster than that of the planted and recently domesticated populations since they diverged from the common ancestor.

**Table 1 Genetic diversity, inbreeding coefficient and number of private alleles in each population of *C. taliensis***

Group	Code	<i>n</i>	<i>A</i>	<i>H<sub>S</sub></i>	<i>H<sub>O</sub></i>	<i>F<sub>is</sub></i>	<i>N<sub>p</sub></i>
W	SJW	24	4.202 (0.545)	0.583 (0.072)	0.506 (0.062)	0.131 (0.094)	4
	YXW	23	4.923 (0.645)	0.603 (0.086)	0.504 (0.065)	0.164 (0.071)	1
	NMW	22	4.757 (0.522)	0.619 (0.061)	0.555 (0.058)	0.104 (0.120)	0
	GMW	24	4.515 (0.530)	0.598 (0.071)	0.482 (0.053)	0.195 (0.073)	1
	CYW	23	4.196 (0.617)	0.542 (0.087)	0.467 (0.063)	0.137 (0.080)	0
	MHW	22	5.400 (0.559)	0.668 (0.065)	0.600 (0.052)	0.102 (0.059)	2
	JCW	11	3.428 (0.388)	0.541 (0.059)	0.468 (0.073)	0.135 (0.103)	2
	MJW	24	4.662 (0.498)	0.632 (0.068)	0.538 (0.050)	0.149 (0.075)	0
	OJW	23	4.641 (0.577)	0.587 (0.076)	0.466 (0.057)	0.206 (0.070)	0
	LXW	32	4.592 (0.589)	0.549 (0.079)	0.476 (0.055)	0.133 (0.050)	2
	YJW	29	4.568 (0.492)	0.623 (0.069)	0.484 (0.059)	0.223 (0.060)	0
	LCW	23	4.143 (0.525)	0.561 (0.067)	0.462 (0.052)	0.176 (0.082)	0
	HQW	33	3.883 (0.482)	0.489 (0.062)	0.397 (0.040)	0.188 (0.057)	0
	TCW	24	3.994 (0.480)	0.551 (0.076)	0.400 (0.061)	0.275 (0.098)	0
	P	GSW	21	4.325 (0.481)	0.585 (0.073)	0.477 (0.057)	0.184 (0.078)
YDW		22	4.176 (0.517)	0.633 (0.055)	0.561 (0.051)	0.113 (0.111)	0
YXP		21	5.443 (0.664)	0.641 (0.075)	0.622 (0.064)	0.029 (0.068)	0
CNP		19	4.627 (0.571)	0.577 (0.083)	0.469 (0.070)	0.188 (0.096)	0
FQP		24	5.108 (0.648)	0.616 (0.076)	0.508 (0.057)	0.175 (0.088)	0
D	LLP	24	5.162 (0.663)	0.615 (0.072)	0.503 (0.058)	0.183 (0.085)	0
	DLP	23	4.215 (0.617)	0.568 (0.072)	0.494 (0.068)	0.129 (0.114)	0
	OJD	24	4.846 (0.526)	0.621 (0.069)	0.500 (0.058)	0.194 (0.071)	1
	LXD	24	4.745 (0.498)	0.618 (0.063)	0.488 (0.053)	0.211 (0.122)	1
Total	YJD	24	5.524 (0.647)	0.682 (0.072)	0.602 (0.049)	0.117 (0.062)	1
	ZKD	24	4.857 (0.640)	0.619 (0.068)	0.525 (0.054)	0.153 (0.091)	0
Total		587	6.778 (0.753)	0.597 (0.062)	0.502 (0.050)	0.160 (0.050)	-

Population means are followed by standard error in parentheses. *n*, number of individuals; *A*, allelic richness; *H<sub>S</sub>*, gene diversity; *H<sub>O</sub>*, observed heterozygosity; *F<sub>is</sub>*, inbreeding coefficient; and *N<sub>p</sub>*, number of private alleles.

**Table 2 Genetic structure and genetic diversity of wild (W), planted (P) and recently domesticated (D) populations**

Parameter		W	P	D	P		
					W vs. P	W vs. D	P vs. D
<i>N<sub>R</sub></i> absent	All	9	40	44	<0.001**	<0.001**	0.578
	Sub	70/77	57	64	0.074	0.065	-
<i>A</i>	All	4.400 (0.115)	4.911 (0.218)	4.993 (0.179)	0.026*	0.016*	0.401
	Sub	4.624 (0.299)/4.604 (0.036)	5.302 (0.141)	5.185 (0.339)	0.099	0.126	-
<i>H<sub>S</sub></i>	All	0.583 (0.011)	0.606 (0.014)	0.634 (0.016)	0.191	0.017*	0.190
	Sub	0.594 (0.009)/0.602 (0.018)	0.628 (0.013)	0.651 (0.030)	0.250	0.133	-
<i>H<sub>O</sub></i>	All	0.489 (0.013)	0.522 (0.027)	0.529 (0.026)	0.133	0.110	0.431
	Sub	0.491 (0.014)/0.474 (0.009)	0.565 (0.060)	0.551 (0.051)	0.097	0.089	-
<i>F<sub>is</sub></i>	All	0.161 (0.044)	0.139 (0.075)	0.166 (0.065)	0.184	0.442	0.203
	Sub	0.173 (0.067)/0.213 (0.058)	0.100 (0.071)	0.154 (0.054)	0.077	0.118	-
<i>F<sub>st</sub></i>	All	0.153 (0.010)	0.092 (0.019)	0.093 (0.011)	0.003**	0.010**	0.482
	Sub	0.147 (0.027)/0.160 (0.039)	0.071 (0.020)	0.077 (0.019)	0.100	0.083	-

*N<sub>R</sub>*, Number of rare alleles. All, comparisons performed between wild, planted and recently domesticated groups. Sub, means the subsample comparisons: YXP and LLP versus YXW and GSW, OJW and YJW versus OJD and YJD. Parameter means are followed by standard error in parentheses. Before '/', there are values of YXW and GSW; and after it, there are values of OJW and YJW. \**P* < 0.05, \*\**P* < 0.01.

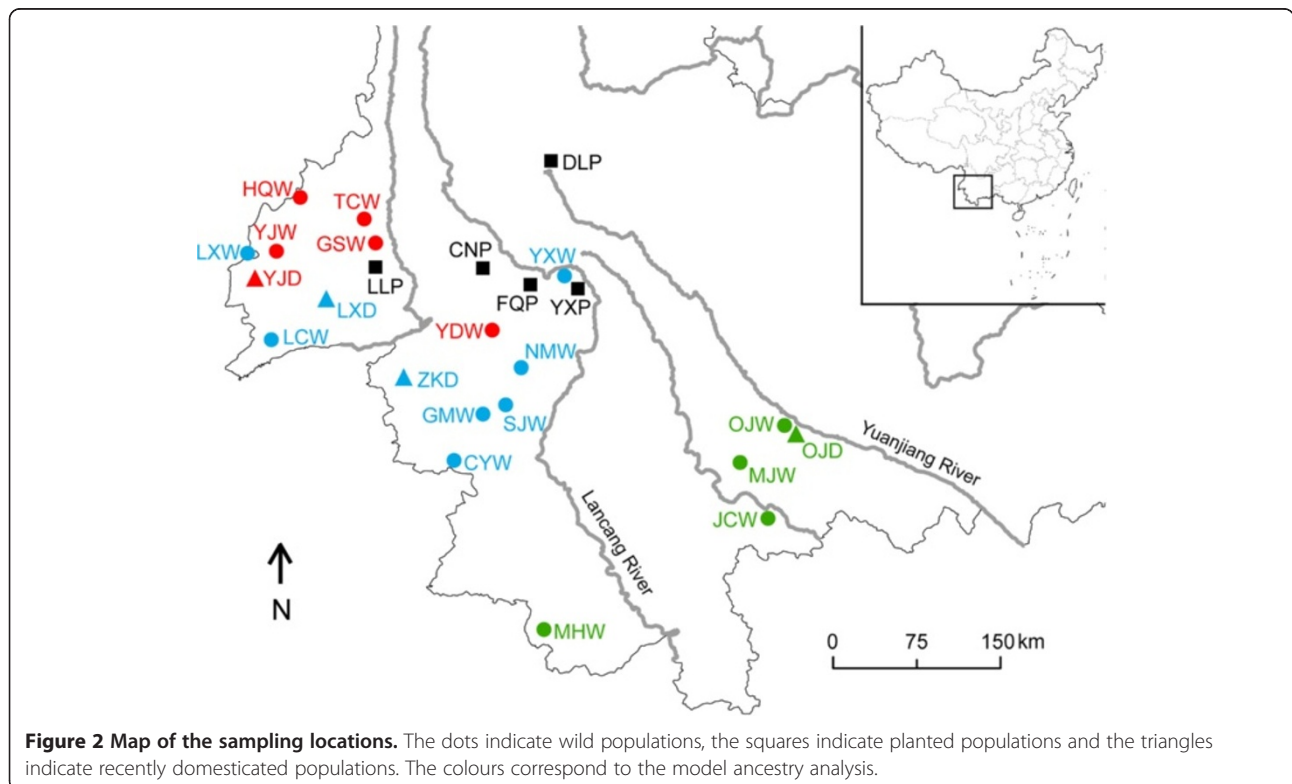
**Table 3 AMOVA for different regions divided in *C. taliensis***

Source of variation	d. f.	Sum of squares	Variance components	% of variation	Fixation indexes	P
Wild, planted and recently domesticated groups						
Among groups	2	65.2	0.00	0.0	$F_{rt} = -0.001$	0.880
Among populations within groups	22	727.2	0.63	12.9	$F_{sr} = 0.128$	0.001
Among individuals within populations	535	2704.1	0.81	16.5	$F_{is} = 0.190$	0.001
Within individuals	560	1927.5	3.44	70.6	$F_{it} = 0.293$	0.001
Total	1119	5423.9	4.87	100.0		
Geographical cluster I, II and III						
Among clusters	2	113.5	0.08	1.5	$F_{rt} = 0.015$	0.001
Among populations within clusters	22	678.8	0.58	11.8	$F_{sr} = 0.120$	0.001
Among individuals within populations	535	2704.1	0.81	16.5	$F_{is} = 0.190$	0.001
Within individuals	560	1927.5	3.44	70.2	$F_{it} = 0.298$	0.001
Total	1119	5423.9	4.90	100.0		

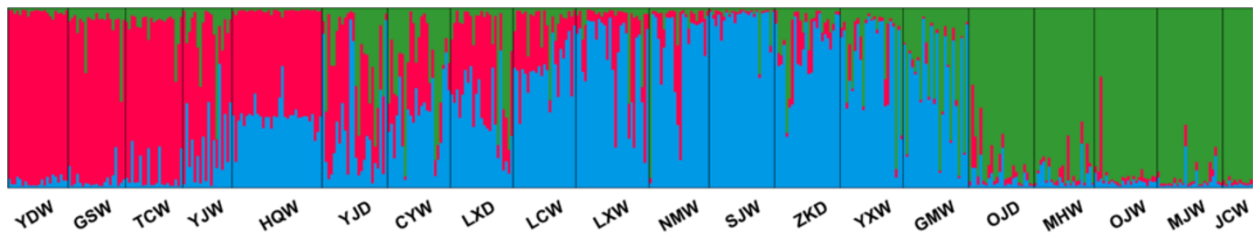
**Ancestry analysis of the planted individuals**

According to the  $\Delta K$  method [36] using STRUCTURE, the highest likelihood for  $K$  was 3 (Additional file 3). Three clusters were detected in the wild and recently domesticated individuals. Cluster I of five populations (OJW, OJD, MJW, JCW and MHW) was located in southern Yunnan. The other 15 populations that were located in western Yunnan and the surrounding area were assigned into two clusters: Cluster II (HQW, TCW, GSW, YJW, YJD and YDW) was located in the north-west of this area, and the other nine populations were

contained in the Cluster III (Figures 2 and 3). Planted individuals with no prior information were assigned to the three clusters. The most proportion of the planted trees genomes (62.4% of DLP, 54.6% of CNP, 51.1% of FQP, 45.4% of YXP and 25.9% of LLP) were assigned to the Cluster III, the less proportion of the planted trees genomes (63.9% of LLP, 36.6% of CNP, 34.1% of FQP, 31.4% of DLP and 27.7% of YXP) were assigned to the Cluster II and the least proportion (26.9% of YXP, 14.8% of FQP, 10.2% of LLP, 8.8% of CNP and 6.2% of DLP) to Cluster I (Figure 4). It indicated that the trees of



**Figure 2 Map of the sampling locations.** The dots indicate wild populations, the squares indicate planted populations and the triangles indicate recently domesticated populations. The colours correspond to the model ancestry analysis.



**Figure 3** Estimated population structure of the wild and recently domesticated *C. taliensis* with  $K = 3$ . The genome of each individual is represented by a vertical line that is divided into coloured segments in proportion to the estimated membership of each of three clusters: Cluster I (green), Cluster II (red) and Cluster III (blue).

population DLP, CNP, FQP and YXP were genetically similar to the natural individuals from Cluster III and trees of population LLP were genetically similar to those from Cluster II. However, 6.2%-26.9% of the genomes of planted trees were similar to those of Cluster I. AMOVA detected 1.5% of variation among these clusters of the whole samples, suggesting a weak differentiation at such level of *C. taliensis* (Table 3).

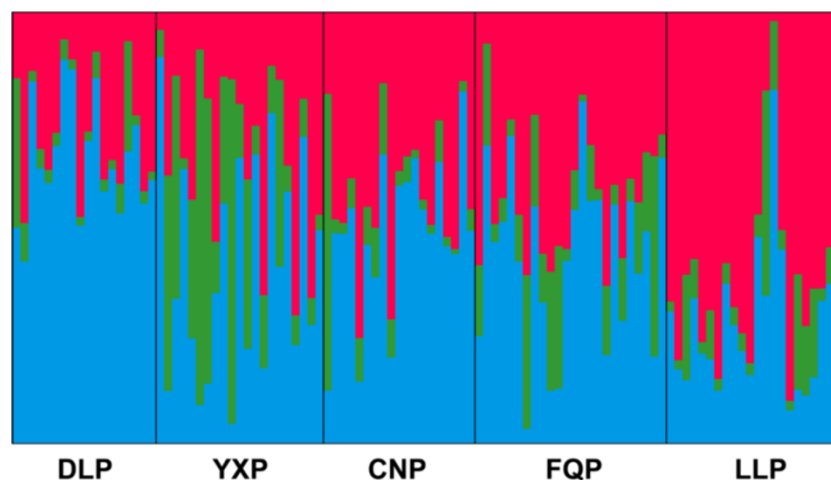
To illustrate further the phylogenetic relationship between wild, recently domesticated and planted populations, the Neighbor-joining method was employed to reconstruct the phylogenetic tree of all 25 populations. Population FQP and CNP were phylogenetically close with population NMW, population DLP was close with population YDW, population LLP was close to population GSW and TCW, and population YXP was close to population YXW, MHW, OJD and OJW (Figure 5). Combining the phylogenetic results with genotype assignment of planted trees, it was proposed that planted trees of *C. taliensis* might have been domesticated from the central forest of western Yunnan, around the geographic area of TCW, GSW, YDW, NMW and YXW (Figure 2), and dispersed artificially to distant places.

## Discussion

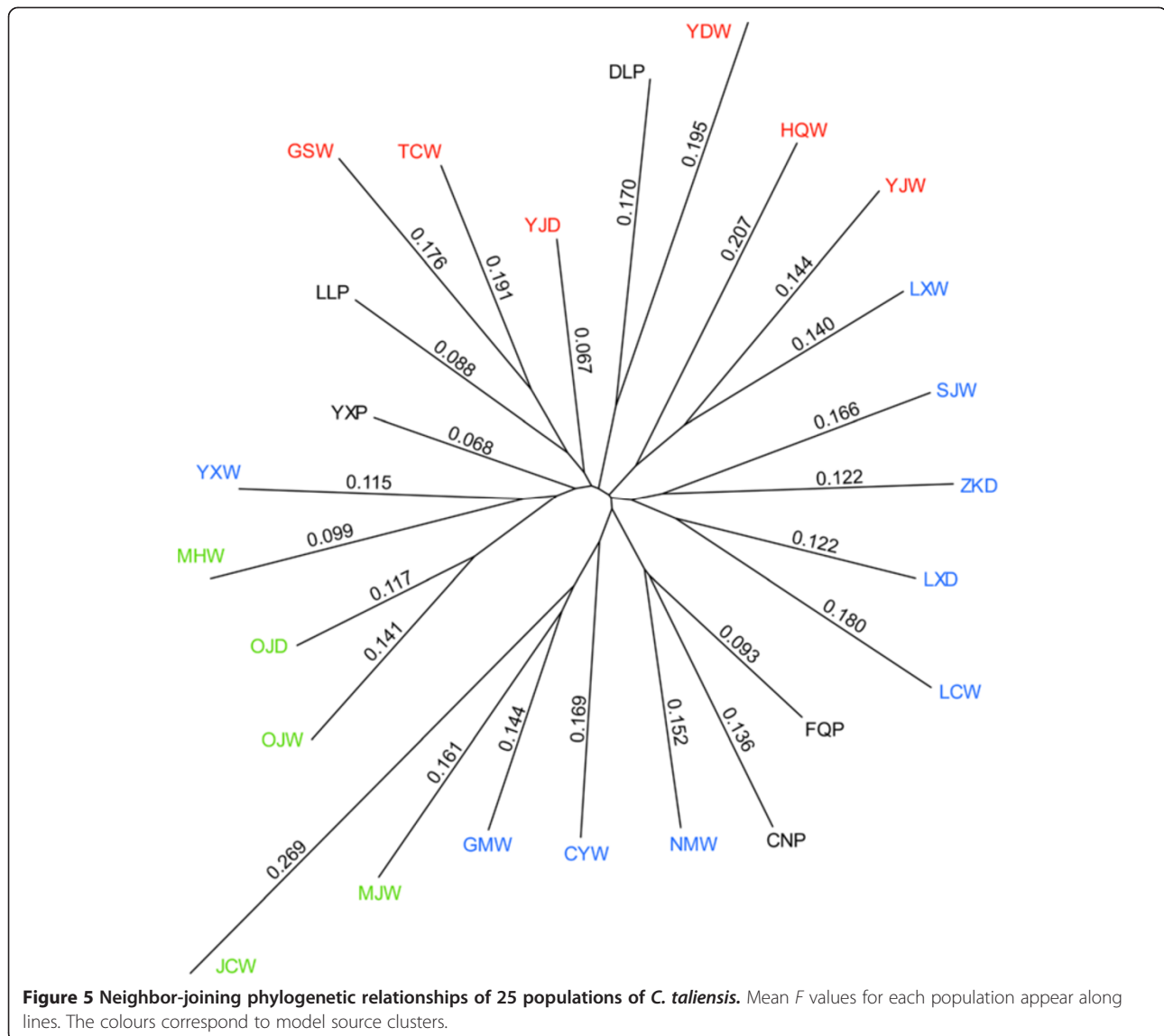
### Genetic diversity of *C. taliensis*

Microsatellites had a high variation in the tea plants [33,37,38] as well as in other species of *Camellia* [39,40]. The high level of haplotype diversity and nucleotide diversity was reported by the nuclear *PAL* and cpDNA *rpl32-trnL* in *C. taliensis* [26]. In the present study, the overall gene diversity in *C. taliensis* (0.597) (Table 1) was lower than that reported for *C. japonica* (0.84) [39]. The gene diversity of planted *C. taliensis* (0.606) was lower than that analysed in the cultivars and six of eight landraces of *C. sinensis* in Japan (0.617-0.723) [33] but higher than that revealed in the Chinese improved cultivars of *C. sinensis* (0.588) [34]. The landraces and wild tea plants reported by Yao et al. [34] were comprised by several different species of *Camellia*, which had higher gene diversity than *C. taliensis*.

Outcrossing breeding system, long life cycle and large geographic ranges may play central roles in shaping the high genetic diversity of tea plants [41]. The lower genetic differentiation means the higher gene flow between populations [42], indicating a majority of genetic diversity preserved within populations (Table 3) [20,26].



**Figure 4** Ancestry analysis of planted *C. taliensis*. Each genome of a planted individual is represented by a vertical line divided into coloured segments in proportion to the estimated ancestry of each source cluster.



However, human activities are the additional factors that have been impacting the genetic diversity of tea plants and the adverse effects of encroachment of humans are increasing continuously. Felling the wild trees of *C. taliensis* to collect leaves for producing the wild tea (Figure 1c) [24,26] and further deforestation to make way for farming, grazing and construction have caused persistent and serious damage to natural sources of this tea plant [43]. The lower genetic diversity and the higher  $F$  values in the wild populations may indicate the stronger genetic drift due to these causes (Table 2, Figure 5 and Additional file 2).

#### Genetic consequence of domestication

The genetic drift analysis (Figure 5, Additional file 2) and both the group and subsample tests showed a lower level of genetic diversity in the wild populations (Table 2).

Did they reveal that the planted populations have an advanced genetic diversity, which was exceptive in the plant domestication [5]? It is not possible to identify a real genetic consequence of domestication in the comparison of endangered wild populations [26] and protected planted populations. The decline in genetic diversity of wild trees introduced by human activity may mask the genetic bottleneck in planted individuals. However, the recently domesticated trees that came directly from the natural forest may partly represent the wild plants that were free from damage. Compared with the recently domesticated group, it indicates that the wild group has lost genetic diversity rather than the planted group has gained genetic diversity. Furthermore, although the differences of genetic diversity between planted and recently domesticated groups were not significant, the little reduction of  $A$  and  $H_S$  and slight growth of  $F$  value in planted

group would indicate a little but non-significant genetic bottleneck during the domestication, which suggests the complicated situation in the tea plants domestication (Table 2, Figure 5 and Additional file 2).

The information from both the chloroplast and nuclear genomes helped us to comprehensively understand the consequence of domestication. CpDNA *rpl32-trnL* intergenic spacer analyses showed a reduction of the genetic diversity during domestication with three planted populations and 21 wild populations of *C. taliensis* [25,26]. The maternal inheritance cpDNA analysis would suggest the limited seed sources of the planted *C. taliensis* during domestication. However, the analysis of cpDNA does not always give results that are consistent with the results analysed by nuclear DNA [44]. Almost the whole cpDNA variation (98.75%) was distributed among *C. taliensis* populations, which was contrastingly different from the results detected by nuclear DNA markers (Table 3) [26]. It may be rational to consider that the sampling number of populations will affect the comparison result of cpDNA diversity between different groups [44]. The loss of cpDNA diversity in the three planted populations compared with 21 wild populations may be partly derived from the much smaller number of planted populations.

Tea plants have 5–10 years long life cycle [45], and have been selected on the traits of leaf during their domestication. The artificial selection based on leaf characteristics may have less of an impact on the genomes of tea plants, especially as they are xenogamous plants and reproduce from seed. Additionally, the gene flow among local planted, wild and recently domesticated trees would introduce introgression among different groups and reduce the genetic difference (Table 3) [42]. The planted population of DLP, which is located at the northern frontier of the natural distribution of *C. taliensis* (Figure 2), is recorded as having a long period of cultivation [45]. We did not find wild *C. taliensis* trees in the local forests in the DLP area. Isolated from natural trees and long period of cultivation seem to be the major causes of the lowest genetic diversity and the highest drift values of population DLP among the planted populations (Table 1, Figure 5 and Additional file 2). Trees in population YXP had a high genetic diversity, which may be the result of gene flow between YXP and YXW. The tea garden from which population YXP was derived contained several cultivars of *C. sinensis*. Mixed cultivation may have made genetic introgression between the two species more feasible [46].

#### Geographical origins of the planted trees

In the present study, both phylogenetic and assignment analysis indicated that the planted trees of *C. taliensis* may be derived from the central forest of western

Yunnan and dispersed artificially to distant places (Figures 2, 3, 4 and 5). Four of five planted populations (LLP, CNP, FQP and YXP) came from this area, suggesting that *C. taliensis* has been mainly domesticated from the adjacent natural forests. This area has a long period of domesticating tea plants [30]. A legend of 'dou cha' (tea fight) could be heard in the village of population YXP. Taking with the tea and seeds, people came from different places gathered in the village for the tea fight. The person who won the competition had to supply their elite seeds of *C. taliensis* to others for planting [30]. Through these human activities, the landraces of *C. taliensis* had been selected and spread to the farther place. The artificial dispersal of landraces would explain the close genetic relationship between some planted trees in population YXP and the natural trees of Cluster I in southern Yunnan as well as the relationship between DLP and YDW (Figures 2, 4 and 5).

Most of the crops that spread worldwide due to their unique values were initially derived from the native habitats of their wild ancestors, which can be traced back through both archaeological and genetic approaches [16,31]. The *in situ* plant domestication process is still underway [47]. From the current activities of recent domestication, it may be reasonable to consider that the origin of planted trees of *C. taliensis* was not a single event but an extended multistage process in which wild trees added sequentially over hundreds of years. The non-significant reduction in genetic diversity of planted trees will support this inference (Table 2). However, in the field investigation and local social survey, we found that a large number of endemic planted trees of *C. taliensis* had been replaced by the endemic improved cultivars of *C. sinensis* var. *assamica* in the late one hundred years [25]. It suggested that improved cultivars of tea were valued for their higher quality. In the last dozen years, the domestication of wild *C. taliensis* was principally owing to the high price of wild tea that had been hyped with the cultural values and it was claimed to be produced without using pesticide and chemical fertilizers [24,26]. It is hard to believe that people were willing to abandon the improved landrace in their gardens but introduce the wild trees from the natural forests frequently during hundreds of years. It is considered that the more likely process is the successive domestication in tea gardens and accompanied occasional introduction of few wild seeds or seedlings of *C. taliensis*.

#### Conservation strategies and utilization in tea breeding

Although the planted and recently domesticated populations had a greater genetic diversity, it is the wild populations that have preserved the most private alleles and rare alleles, making them the most important reservoirs of genetic variation (Tables 1 and 2). Taking natural trees and planting them in private gardens or clearing



out other shrubs and transforming a plot of wild forest into one's own tea garden destroys not only wild resources of *C. taliensis*, but also the natural forest in general (Figure 1d and e). Without effective restriction, each individual action of initial domestication would add up to the substantial damage of common resources, not unlike the tragedy of the commons described by Hardin [48].

It is essential to conserve common natural resources, including wild tea plants, through efficient management. However, *C. taliensis* is an important landrace source that could generate new developments in tea breeding, for which wild genetic resources should be indispensable. The paradox of protection and production could be addressed through rapid reproduction from cuttings [49] of wild trees. The planted trees of *C. taliensis* should also be protected for their selected genetic characteristics and endemic culture, and they will facilitate the further breeding of tea plants.

## Conclusions

In this study, we firstly illustrated the domestication origin of a tea plant with genetic approaches. Fourteen nuclear microsatellite loci detected a moderate high genetic diversity in *C. taliensis*. Using the credible wild, planted and recently domesticated populations of this tea plant, we discussed the genetic consequence of domestication and geographic origin of the planted trees. Group and subsample tests indicated that a little and non-significant bottleneck occurred during the domestication. The phylogenetic and assignment analyses suggested that the planted trees may have been domesticated from the adjacent central forest of western Yunnan and dispersed artificially to distant places. As an important tea source plant in Yunnan province of China, *C. taliensis* should be protected and utilized for their unique genetic characteristics, which are valuable for the genetic improvement of tea plants. Our study will be helpful to distinguish the genetic results of different collection and domestication activities of tea plant, and will further give deep insights into the custom and history of tea domestication.

## Methods

### Sampling of *C. taliensis*

Our sampling localities encompassed almost the entire range of *C. taliensis* in western Yunnan and the surrounding areas (Figure 2, Additional file 4). Wild trees were sampled from the natural forests (Figure 1b and c). Planted trees were collected from tea gardens and identified as seedling plants (Figure 1f). Recently domesticated trees were sampled in tea gardens and the owners verified them as having come directly from natural forests (Figure 1d and e). We collected 587 individual plants from

16 wild populations (W), five planted populations (P) and four recently domesticated populations (D). Leaves were preserved in silica gel for DNA extraction. Voucher specimens were deposited at the Herbarium of the Kunming Institute of Botany, Chinese Academy of Sciences (KUN) (Additional file 4).

### DNA extraction and microsatellite analysis

Total genomic DNA was extracted using a modified protocol of Doyle and Doyle [50]. Thirty-seven primer sets were selected from the known microsatellite loci in *C. taliensis* [51], *C. sinensis* [37,52,53], *C. japonica* [54] and other species [55]. After the primary screening, we got 14 nuclear microsatellite loci in which only five primer sets were transferred from other species of *Camellia* as rest of the primer sets were developed in specific for *C. taliensis* (Additional file 1). In the selected 37 primer sets, there were two chloroplast microsatellite loci: ccmp6 [52] and PS-ID [55]. We had not found the mutation in PS-ID from primary screening, but had found one mutation in ccmp6. However, when we developed all 587 individual with ccmp6, there was only a single mutation in population TCW. So, these two chloroplast microsatellite loci had not been implemented in the subsequent analyses.

PCR amplification was carried out according to the standard protocol and the products were separated on 8% polyacrylamide denaturing gel by silver staining. Two or three samples of each primer set were sequenced to ensure the markers hitting the same microsatellites regions as reported. The alleles were scored according to the specific references that contained 1–5 alleles of each locus from single or mixed PCR products and the 100 bp DNA ladder (Tiangen Biotech, Beijing, China). About 30% of total data was performed additionally on the gel for cross and repeated scoring.

### Genetic diversity estimation

The differences between the number of rare alleles (frequency  $\leq 0.05$ ) [35] present in the wild populations, planted populations and recently domesticated populations were tested using a  $\chi^2$  contingency table test [56]. The allelic richness corrected for sample size ( $A$ ), the observed heterozygosity ( $H_O$ ), the gene diversity ( $H_S$ ) and the  $F$ -statistics were determined in FSTAT V2.9.3.2 [57]. This program was also used to perform comparison tests between each genetic parameter of the wild, planted and recently domesticated groups. The one-tailed  $P$  values were estimated using the random permutation method.

In the group comparison tests, the wide differences in number of trees between wild and planted groups as well as between wild and recently domesticated groups may bias the results. The subsample tests had been developed for avoiding this potential statistic bias and

achieving the more detailed results. Certain adjacent populations in different groups were selected to perform the subsample comparisons: YXP and LLP versus YXW and GSW, OJW and YJW versus OJD and YJD (Figure 2). These genetic comparisons were also carried out in FSTAT V2.9.3.2 [57].

#### Genetic drift analysis

The  $F$  model, performed with the program STRUCTURE V2.3.3 [58], was used to estimate the rate of drift away from a common ancestor for each wild, planted and recently domesticated populations. A Bayesian approach was implemented to infer the ancestral allele frequencies and the rates of drift away from the ancestral allelic state in each population ( $F$  values). For all pairs of wild, planted and recently domesticated populations, we set the prior mean  $F$  to 0.1. Three parallel Markov chains were run with a burn-in of  $10^4$  iterations and a run length of  $10^5$  iterations for each comparison. Regions of 90% credibility were computed from the distribution of  $F$  values estimated in the final run. The mean  $F$  values for each population were calculated across all runs and all other populations that belonged to different groups [32].

#### Ancestry analysis of the planted trees

Using the program STRUCTURE V2.3.3 [58,59], we estimated the number of genetic clusters of natural *C. taliensis* to which we would assign the planted trees. Both the wild and recently domesticated samples were included to estimate the genetic clusters, because the recently domesticated trees came directly from the natural forest and the broader natural samples would make the subsequence assignment analysis more accurate. We used the admixture model and assumed that the allele frequencies were correlated among the populations. The simulations were run with a burn-in of 500,000 iterations and a run length of  $10^6$  iterations from  $K = 1$  through 20. Runs for each  $K$  were replicated 10 times and the true  $K$  was determined according to the method described by Evanno et al. [36]. After deduction of true  $K$  value, the wild and recently domesticated individuals were specified as belonging to each of  $K$  clusters but no prior information was specified as to the origin of planted trees, which established a new dataset. Using this new dataset and the admixture model, ten parallel Markov chains were run for the correlated allele frequency models with a burn-in of 500,000 iterations and a run length of  $10^6$  iterations to estimate the proportion of every planted tree's genome possessing ancestry in each of  $K$  clusters [10,32]. The results of the genetic clustering and ancestry analysis were perfected in the programs CLUMPP V1.1.2 [60] and DISTRUCT [61].

#### Phylogenetic analysis

Genetic distances ( $D_A$ ) [62] between all 25 populations were calculated by DISPAN [63] with 1000 replicate bootstrap data sets. Using the pairwise  $D_A$ , the program MEGA 5.1 [64] was implemented to construct a Neighbor-joining tree of the 25 populations.

#### Analysis of molecular variance

Analysis of molecular variance (AMOVA) was performed with GENALEX 6.501 [65,66] to detect the proportion of variance of wild, planted and recently domesticated groups. After each planted population was assigned to the geographic cluster, GENALEX 6.501 was also implemented to analyse the proportion of genetic variance in these clusters.

#### Additional files

**Additional file 1: Description of the microsatellite loci.**

**Additional file 2: Results of the  $F$  model comparisons.** F1, F2 and F3 refer to the  $F$  values of the wild, planted and recently domesticated populations, respectively.

**Additional file 3: Results of detecting the true  $K$ .**

**Additional file 4: Sampling localities of *Camellia taliensis*.** Population LXW is located in Myanmar and the other populations are located in Yunnan province of China.

#### Competing interests

The authors declare that they have no competing interests.

#### Authors' contributions

DWZ participated in the field sample collection, carried out the molecular genetic studies, performed the statistical analysis and drafted the manuscript. JBY participated in the molecular genetic studies and statistical analysis. SXY designed the research, collected samples, participated in the molecular genetic studies and revised the manuscript. KK involved the molecular genetic studies and revised the manuscript. JPL involved the molecular genetic studies. All authors read and approved the final manuscript.

#### Acknowledgements

We thank Yanmin Wu and Yang Liu for helping to collect some of the samples, Hui Zhao and Xinyu Du for their help with the images, Dr. Hongtao Li, Dr. Rong Li, Yang Liu, Wei Fang and anonymous reviewers for their helpful suggestions on the manuscript, and Dr. Mike Poole for the language editing. This work was supported by the National Natural Science Foundation of China (31270246, 30870169) and grants from the Chinese Academy of Sciences through a Large-Scale Scientific Facilities' Research Project (2009-LSF-GBOWS-01), and partly funded by the Japan Society for the Promotion of Science (JSPS) Asian CORE Program entitled 'Cooperative Research and Educational Center for Important Plant Genetic Resources in East Asia'.

#### Author details

<sup>1</sup>Key Laboratory for Plant Diversity and Biogeography of East Asia, Kunming Institute of Botany, Chinese Academy of Sciences, Kunming, Yunnan 650201, China. <sup>2</sup>University of Chinese Academy of Sciences, Beijing 100049, China. <sup>3</sup>Germplasm Bank of Wild Species, Kunming Institute of Botany, Chinese Academy of Sciences, Kunming, Yunnan 650201, China. <sup>4</sup>Graduate School of Environmental and Life Science, Okayama University, 1-1-1 Tsushima-Naka, Okayama 700-8530, Japan. <sup>5</sup>School of Biotechnology and Food Engineering, Hefei University of Technology, Hefei, Anhui 230009, China.

Received: 4 October 2013 Accepted: 7 January 2014  
Published: 9 January 2014

## References

- Ranere AJ, Piperno DR, Holst I, Dickau R, Iriarte J: **The cultural and chronological context of early Holocene maize and squash domestication in the Central Balsas River Valley, Mexico.** *Proc Natl Acad Sci USA* 2009, **106**:5014–5018.
- Heun M, Schäfer-Pregl R, Klawan D, Castagna R, Accerbi M, Borghi B, Salamini F: **Site of einkorn wheat domestication identified by DNA fingerprinting.** *Science* 1997, **278**:1312–1314.
- Tanno KI, Willcox G: **How fast was wild wheat domesticated?** *Science* 1886, **2006**:311.
- Fuller DQ, Qin L, Zheng YF, Zhao ZJ, Chen XG, Hosoya LA, Sun GP: **The domestication process and domestication rate in rice: spikelet bases from the Lower Yangtze.** *Science* 2009, **323**:1607–1610.
- Doebley JF, Gaut BS, Smith BD: **The molecular genetics of crop domestication.** *Cell* 2006, **127**:1309–1321.
- Zhu QH, Zheng XM, Luo JC, Gaut BS, Ge S: **Multilocus analysis of nucleotide variation of *Oryza sativa* and its wild relatives: severe bottleneck during domestication of rice.** *Mol Biol Evol* 2007, **24**:875–888.
- Li ZM, Zheng XM, Ge S: **Genetic diversity and domestication history of African rice (*Oryza glaberrima*) as inferred from multiple gene sequences.** *Theor Appl Genet* 2011, **123**:21–31.
- Tenaillon M, U'Ren J, Tenaillon O, Gaut BS: **Selection versus demography: a multilocus investigation of the domestication process in maize.** *Mol Biol Evol* 2004, **21**:1214–1225.
- Hyten DL, Song QJ, Zhu YL, Choi IY, Nelson RL, Costa JM, Specht JE, Shoemaker RC, Cregan PB: **Impacts of genetic bottlenecks on soybean genome diversity.** *Proc Natl Acad Sci USA* 2006, **103**:16666–16671.
- Guo J, Wang YS, Song C, Zhou JF, Qiu LJ, Huang HW, Wang Y: **A single origin and moderate bottleneck during domestication of soybean (*Glycine max*): implications from microsatellites and nucleotide sequences.** *Ann Bot* 2010, **106**:505–514.
- Bourguiba H, Audergon JM, Krichen L, Trifi-Farah N, Mamouni A, Trabelsi S, D'Onofrio C, Asma BM, Santoni S, Khadari B: **Loss of genetic diversity as a signature of apricot domestication and diffusion into the Mediterranean Basin.** *BMC Plant Biol* 2012, **12**:49.
- Chapman MA, Burke JM: **DNA sequence diversity and the origin of cultivated safflower (*Carthamus tinctorius* L.; Asteraceae).** *BMC Plant Biol* 2007, **7**:60.
- Kelly BA, Hardy OJ, Bouvet JM: **Temporal and spatial genetic structure in *Vitellaria paradoxa* (shea tree) in an agroforestry system in southern Mali.** *Mol Ecol* 2004, **13**:1231–1240.
- Parra F, Casas A, Peñaloza-Ramírez JM, Cortés-Palomec AC, Rocha-Ramírez V, González-Rodríguez A: **Evolution under domestication: ongoing artificial selection and divergence of wild and managed *Stenocereus pruinosus* (Cactaceae) populations in the Tehuacán Valley, Mexico.** *Ann Bot* 2010, **106**:483–496.
- Miller A, Schaal B: **Domestication of a Mesoamerican cultivated fruit tree, *Spondias purpurea*.** *Proc Natl Acad Sci USA* 2005, **102**:12801–12806.
- Kilian B, Özkan H, Walthers A, Kohl J, Dagan T, Salamini F, Martin W: **Molecular diversity at 18 loci in 321 wild and 92 domesticated lines reveal no reduction of nucleotide diversity during *Triticum monococcum* (einkorn) domestication: implications for the origin of agriculture.** *Mol Biol Evol* 2007, **24**:2657–2668.
- Fang J: **No tea before the Warring States period.** *Agricultural History of China* 1998, **17**:6–14, 39.
- Jackson JR: **Tea.** *Nature* 1870, **2**:215–217.
- Jankun J, Selman SH, Swiercz R, Skrzypczak-Jankun E: **Why drinking green tea could prevent cancer.** *Nature* 1997, **387**:561.
- Paul S, Wachira FN, Powell W, Waugh R: **Diversity and genetic differentiation among populations of Indian and Kenyan tea [*Camellia sinensis* (L.) O. Kuntze] revealed by AFLP markers.** *Theor Appl Genet* 1997, **94**:255–263.
- Min TL, Bartholomew B: **Theaceae.** In *Flora of China. Volume 12*. Edited by Wu ZY, Raven PH, Hong DY. Beijing and St. Louis: Science Press and Missouri Botanical Garden; 2007:367–412.
- Kingdon-Ward F: **Does wild tea exist?** *Nature* 1950, **165**:297–299.
- Wight W, Barua PK: **What is Tea?** *Nature* 1957, **179**:506–507.
- Ji PZ, Wang YG, Jiang HB, Tang YC, Wang PS, Zhang J, Huang XQ: **Genetic diversity of *Camellia taliensis* from Yunnan province of China revealed by AFLP analysis.** *J Tea Sci* 2009, **29**:329–335.
- Liu Y, Yang SX, Gao LZ: **Comparative study on the chloroplast *RPL32-TRNL* nucleotide variation within and genetic differentiation among ancient tea plantations of *Camellia sinensis* var. *assamica* and *C. taliensis* (Theaceae) from Yunnan, China.** *Acta Botanica Yunnanica* 2010, **32**:427–434.
- Liu Y, Yang SX, Ji PZ, Gao LZ: **Phylogeography of *Camellia taliensis* (Theaceae) inferred from chloroplast and nuclear DNA: insights into evolutionary history and conservation.** *BMC Evol Biol* 2012, **12**:92.
- Chen J, Pei SJ: **Studies on the origin of tea cultivation.** *Acta Botanica Yunnanica* 2003, **Suppl XIV**:33–40.
- Gao DF, Zhang YJ, Yang CR, Chen KK, Jiang HJ: **Phenolic antioxidants from green tea produced from *Camellia taliensis*.** *J Agric Food Chem* 2008, **56**:7517–7521.
- Zhu LF, Dong HZ, Yang SX, Zhu HT, Xu M, Zeng SF, Yang CR, Zhang YJ: **Chemical compositions and antioxidant activity of essential oil from green tea produced from *Camellia taliensis* (Theaceae) in Yuanjiang, Southwestern China.** *Plant Divers Res* 2012, **34**:409–416.
- Yang CR, Zhang YJ, Gao DF, Chen KK, Jiang HJ: **Assessment of germplasm of *Camellia taliensis* and origin of cultivated *C. sinensis* var. *assamica*.** *Tea Sci Technol* 2008, **3**:1–4.
- Benz BF: **Archaeological evidence of teosinte domestication from Guila Naquitz, Oaxaca.** *Proc Natl Acad Sci USA* 2001, **98**:2104–2106.
- Harter AV, Gardner KA, Falush D, Lentz DL, Bye RA, Rieseberg LH: **Origin of extant domesticated sunflowers in eastern North America.** *Nature* 2004, **430**:201–205.
- Ohshako T, Ohgushi T, Motosugi H, Oka K: **Microsatellite variability within and among local landrace populations of tea, *Camellia sinensis* (L.) O. Kuntze, in Kyoto, Japan.** *Genet Resour Crop Evol* 2008, **55**:1047–1053.
- Yao MZ, Ma CL, Qiao TT, Jin JQ, Chen L: **Diversity distribution and population structure of tea germplasm in China revealed by EST-SSR markers.** *Tree Genet Genomes* 2012, **8**:205–220.
- White GM, Boshier DH, Powell W: **Genetic variation within a fragmented population of *Swietenia humilis* Zucc.** *Mol Ecol* 1999, **8**:1899–1909.
- Evanno G, Regnaut S, Goudet J: **Detecting the number of clusters of individuals using the software STRUCTURE: a simulation study.** *Mol Ecol* 2005, **14**:2611–2620.
- Freeman S, West J, James C, Lea V, Mayes S: **Isolation and characterization of highly polymorphic microsatellites in tea (*Camellia sinensis*).** *Mol Ecol Notes* 2004, **4**:324–326.
- Sharma RK, Bhardwaj P, Negi R, Mohapatra T, Ahuja PS: **Identification, characterization and utilization of unigenes derived microsatellite markers in tea (*Camellia sinensis* L.).** *BMC Plant Biol* 2009, **9**:53.
- Ueno S, Tomaru N, Yoshimaru H, Manabe T, Yamamoto S: **Genetic structure of *Camellia japonica* L. in an old-growth evergreen forest, Tsushima, Japan.** *Mol Ecol* 2000, **9**:647–656.
- Wei JQ, Chen ZY, Wang ZF, Tang H, Jiang YS, Wei X, Li XY, Qi XX: **Isolation and characterization of polymorphic microsatellite loci in *Camellia nitidissima* Chi (Theaceae).** *Am J Bot* 2010, **97**:e89–e90.
- Hamrick JL, Godt MJW, Sherman-Broyles SL: **Factors influencing levels of genetic diversity in woody plant species.** *New For* 1992, **6**:95–124.
- Hübner S, Günther T, Flavell A, Fridman E, Graner A, Korol A, Schmid KJ: **Islands and streams: clusters and gene flow in wild barley populations from the Levant.** *Mol Ecol* 2012, **21**:1115–1129.
- Jiang HB, Wang YG, Tang YC, Song WX, Li YY, Ji PZ, Huang XQ: **Investigation of wild tea plant (*Camellia taliensis*) germplasm resource from Yunnan, China.** *Southwest China J Agri Sci* 2009, **22**:1153–1157.
- Petit RJ, Duminil J, Fineschi S, Hampe A, Salvini D, Vendramin GG: **Comparative organization of chloroplast, mitochondrial and nuclear diversity in plant populations.** *Mol Ecol* 2005, **14**:689–701.
- Min TL: *Monograph of the Genus Camellia*. Kunming: Yunnan Science and Technology Press; 2000.
- Zhao DW, Yang SX: **Rediscovery of *Camellia grandibracteata* (Theaceae) with emendate description.** *J Trop Subtrop Bot* 2012, **20**:399–402.
- Casas A, Otero-Araiz A, Pérez-Negrón E, Valiente-Banuet A: **In situ management and domestication of plants in Mesoamerica.** *Ann Bot* 2007, **100**:1101–1115.
- Hardin G: **The tragedy of the commons.** *Science* 1968, **162**:1243–1248.

49. Qin XJ, Lin CC, Chen XQ: Studies on new techniques of cuttage reproduction and coming out from nursery rapidly of tea. *Chin Agri Sci Bull* 2004, **20**:224–226.
50. Doyle JJ, Doyle JL: A rapid DNA isolation procedure for small quantities of fresh leaf tissue. *Phytochem Bull* 1987, **19**:11–15.
51. Yang JB, Yang J, Li HT, Zhao Y, Yang SX: Isolation and characterization of 15 microsatellite markers from wild tea plant (*Camellia taliensis*) using FIASCO method. *Conserv Genet* 2009, **10**:1621–1623.
52. Kaundun SS, Matsumoto S: Heterologous nuclear and chloroplast microsatellite amplification and variation in tea, *Camellia sinensis*. *Genome* 2002, **45**:1041–1048.
53. Hung CY, Wang KH, Huang CC, Gong X, Ge XJ, Chiang TY: Isolation and characterization of 11 microsatellite loci from *Camellia sinensis* in Taiwan using PCR-based isolation of microsatellite arrays (PIMA). *Conserv Genet* 2008, **9**:779–781.
54. Ueno S, Yoshimaru H, Tomaru N, Yamamoto S: Development and characterization of microsatellite markers in *Camellia japonica* L. *Mol Ecol* 1999, **8**:335–346.
55. Nakamura I, Urairong H, Kameya N, Fukuta Y, Chitrakon S, Sato YI: Six different plastid subtypes were found in *O. sativa*–*O. rufipogon* complex. *Rice Gen Newslett* 1998, **15**:80–82.
56. Jump AS, Peñuelas J: Genetic effects of chronic habitat fragmentation in a wind-pollinated tree. *Proc Natl Acad Sci USA* 2006, **103**:8069–8100.
57. Goudet J: FSTAT (version 1.2): a computer program to calculate F-statistics. *J Hered* 1995, **86**:485–486.
58. Falush D, Stephens M, Pritchard JK: Inference of population structure using multilocus genotype data: linked loci and correlated allele frequencies. *Genetics* 2003, **164**:1567–1587.
59. Pritchard JK, Stephens M, Donnelly P: Inference of population structure using multilocus genotype data. *Genetics* 2000, **155**:945–959.
60. Jakobsson M, Rosenberg NA: CLUMPP: a cluster matching and permutation program for dealing with label switching and multimodality in analysis of population structure. *Bioinformatics* 2007, **23**:1801–1806.
61. Rosenberg NA: DISTRUCT: a program for the graphical display of population structure. *Mol Ecol Notes* 2004, **4**:137–138.
62. Nei M, Tajima F, Tateno Y: Accuracy of estimated phylogenetic trees from molecular data. *J Mol Evol* 1983, **19**:153–170.
63. Ota T: DISPAN: Genetic distance and phylogenetic analysis. [<http://www.softpedia.com/get/Science-CAD/DISPAN.shtml>]
64. Tamura K, Peterson D, Peterson N, Stecher G, Nei M, Kumar S: MEGA5: molecular evolutionary genetics analysis using maximum likelihood, evolutionary distance, and maximum parsimony methods. *Mol Biol Evol* 2011, **28**:2731–2739.
65. Peakall R, Smouse PE: GENALEX 6: genetic analysis in Excel. Population genetic software for teaching and research. *Mol Ecol Notes* 2006, **6**:288–295.
66. Peakall R, Smouse PE: GenAEx 6.5: genetic analysis in Excel. Population genetic software for teaching and research—an update. *Bioinformatics* 2012, **28**:2537–2539.

doi:10.1186/1471-2229-14-14

Cite this article as: Zhao et al.: Genetic diversity and domestication origin of tea plant *Camellia taliensis* (Theaceae) as revealed by microsatellite markers. *BMC Plant Biology* 2014 **14**:14.

Submit your next manuscript to BioMed Central and take full advantage of:

- Convenient online submission
- Thorough peer review
- No space constraints or color figure charges
- Immediate publication on acceptance
- Inclusion in PubMed, CAS, Scopus and Google Scholar
- Research which is freely available for redistribution

Submit your manuscript at  
[www.biomedcentral.com/submit](http://www.biomedcentral.com/submit)

