



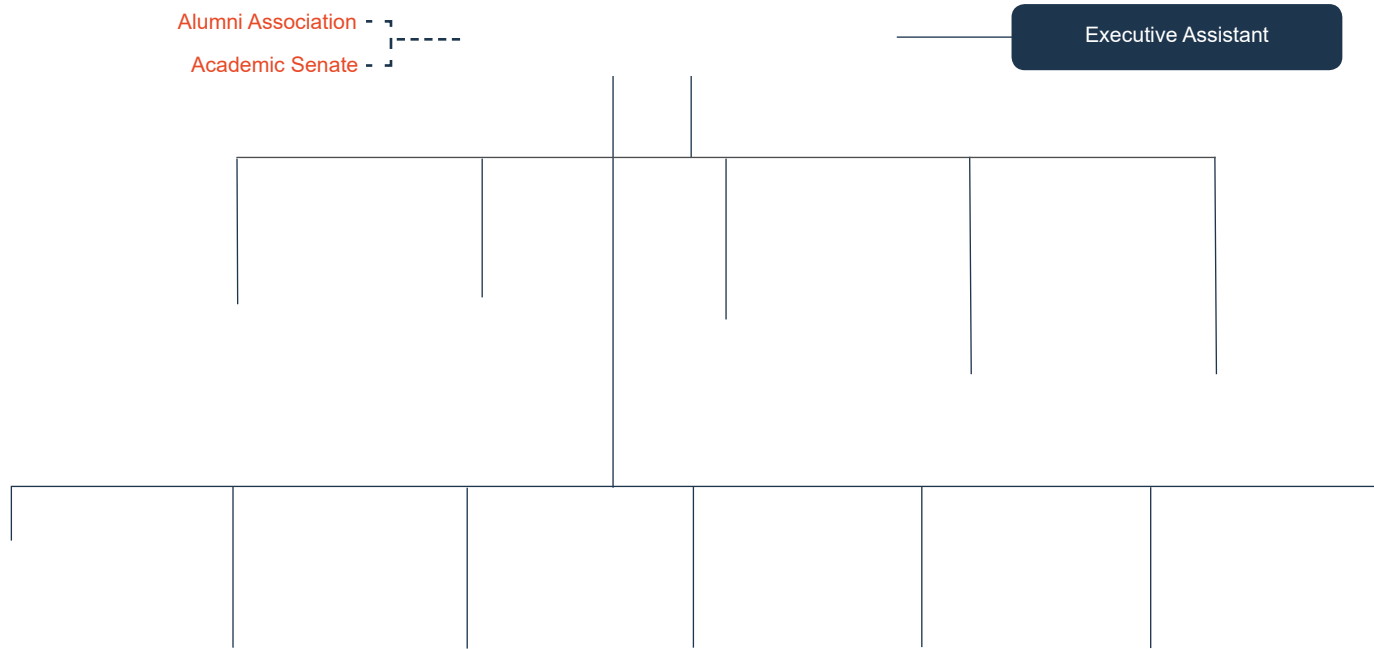
I
ILLINOIS



Administrative Organizational Chart

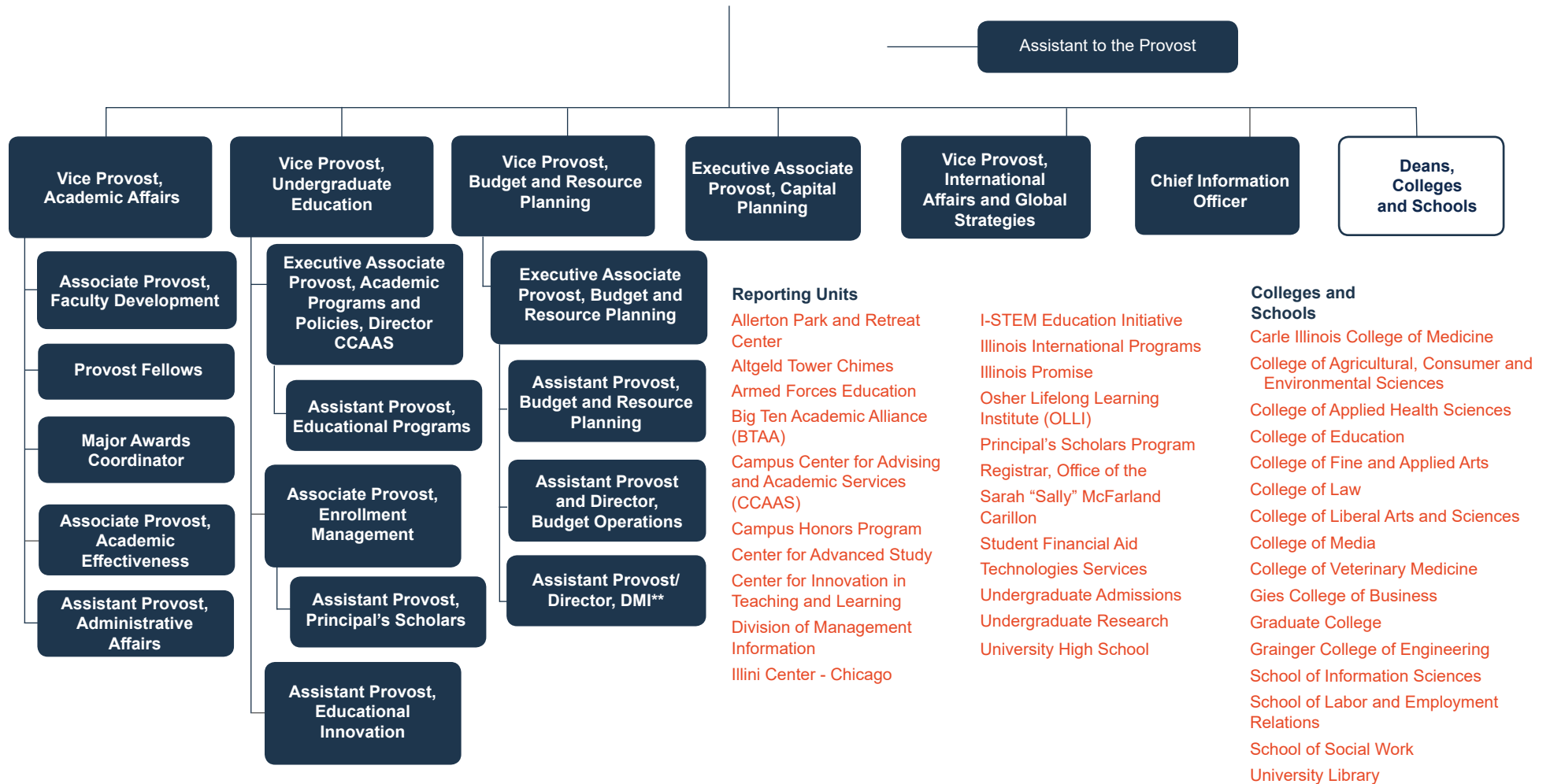
The University of Illinois at Urbana-Champaign is a large and complex institution. While our missions of learning, discovery and engagement are straightforward, how we organize ourselves to deliver them can sometimes be confusing. We hope this organizational chart helps to illustrate how our administration operates and how upper management allocates the roles and responsibilities of a very diverse university.

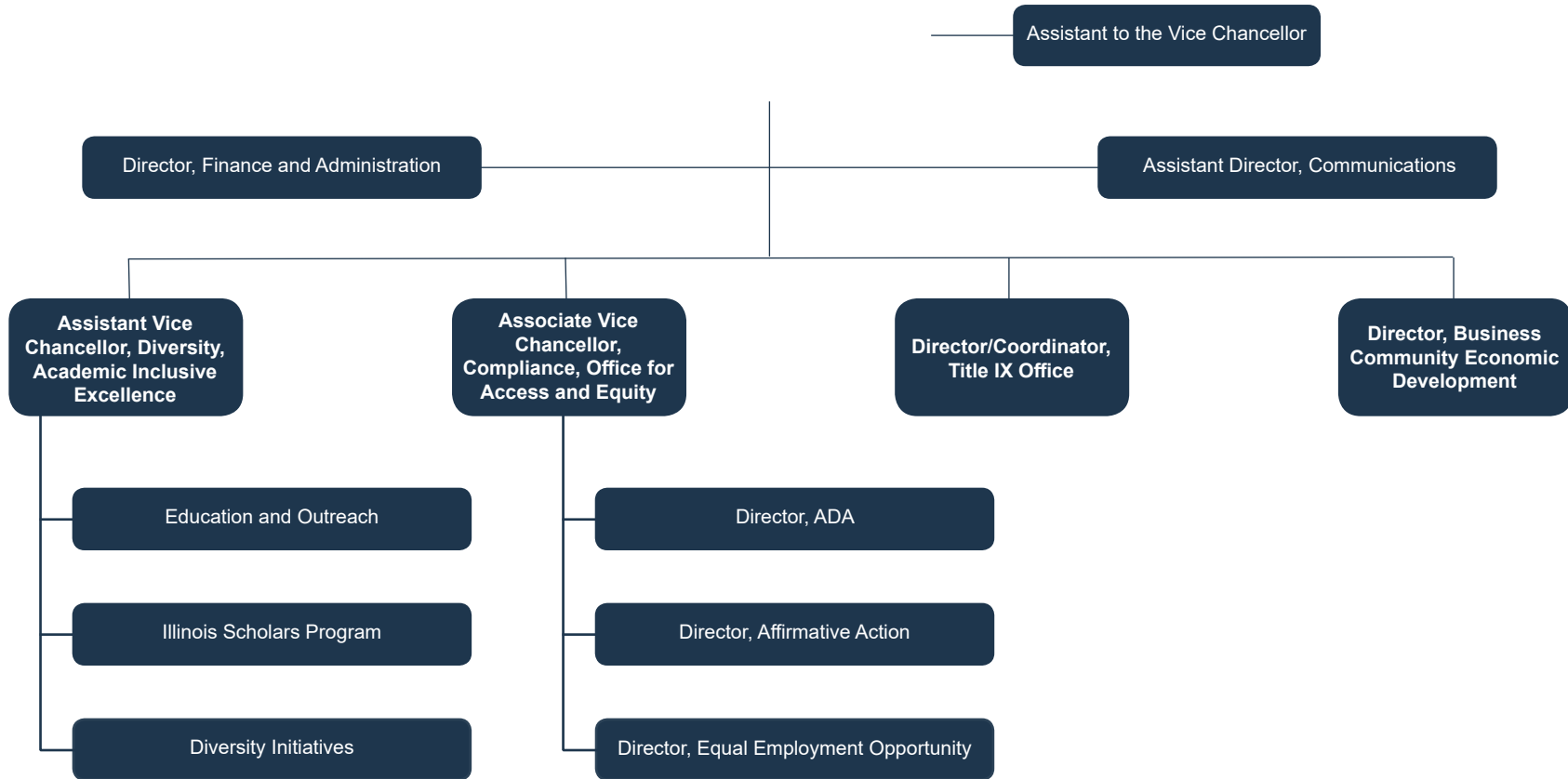


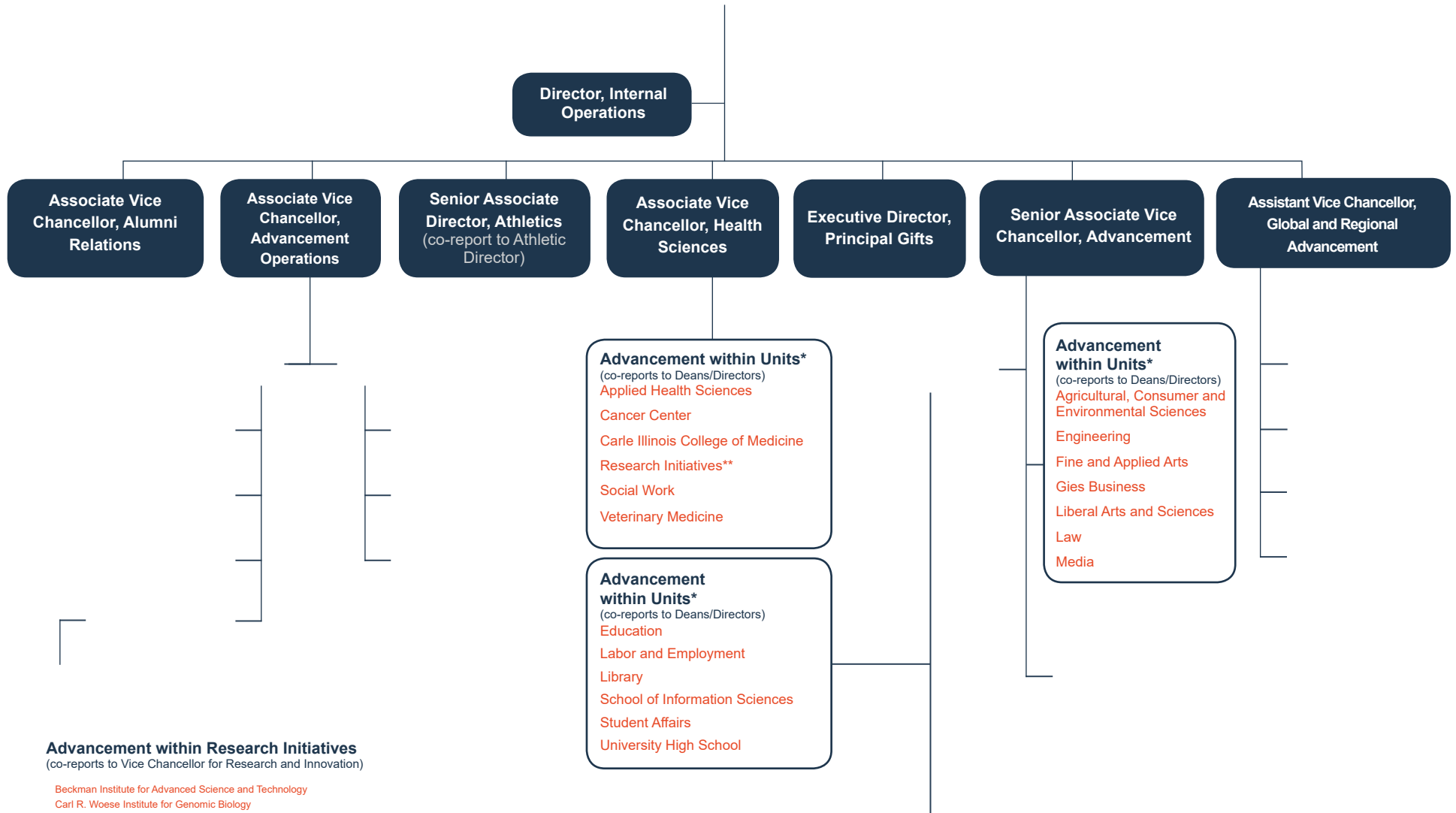


** Also serves as vice president of the University of Illinois system*



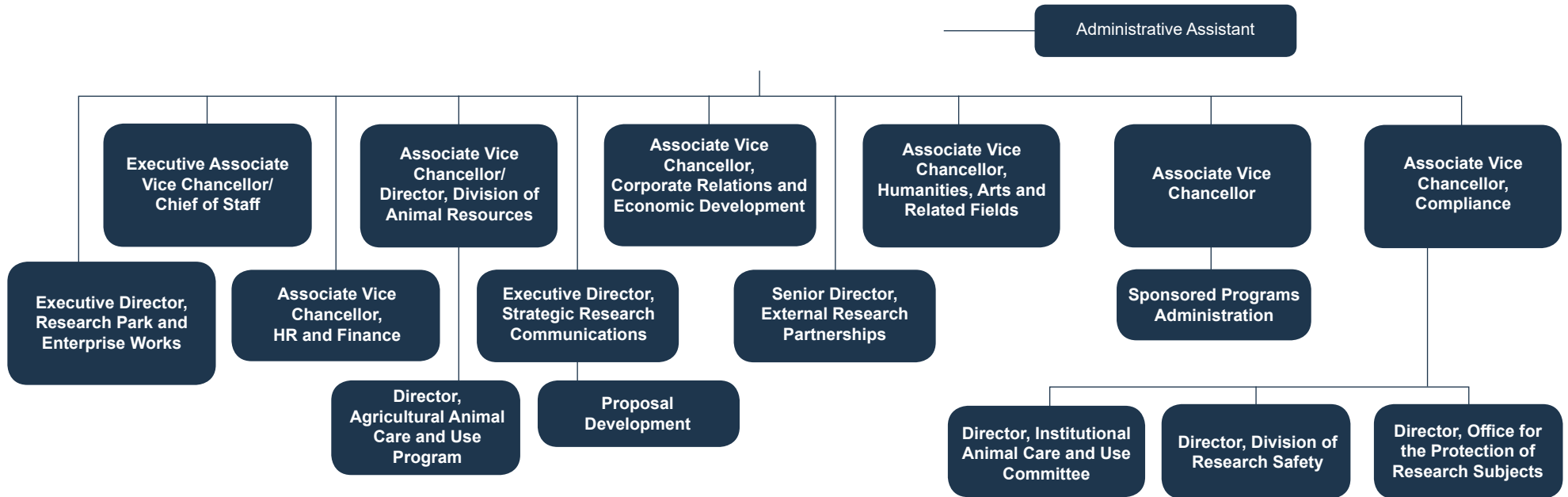




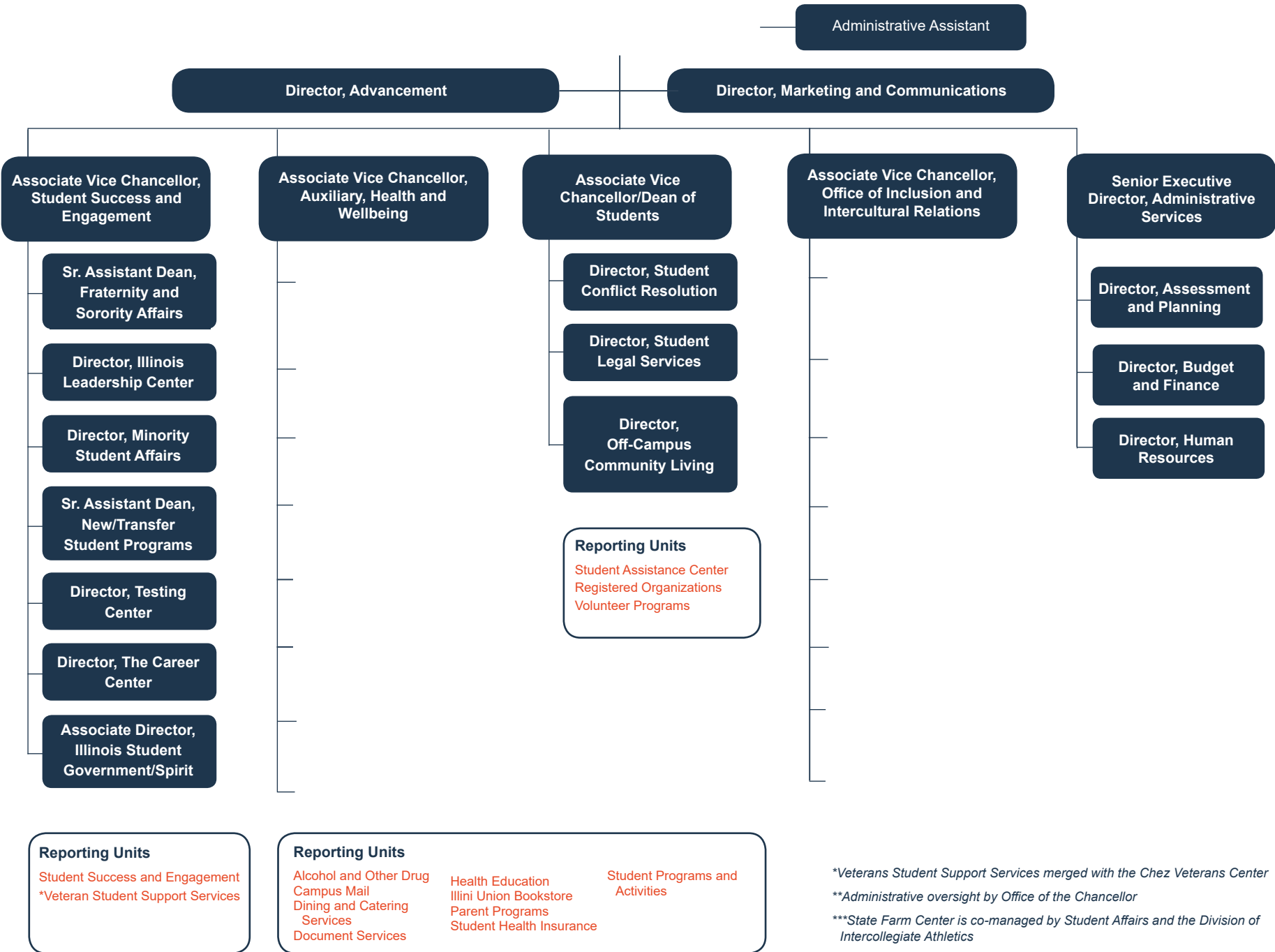


Advancement within Research Initiatives
(co-reports to Vice Chancellor for Research and Innovation)

- Beckman Institute for Advanced Science and Technology
- Carl R. Woese Institute for Genomic Biology
- Illinois Program for Research in the Humanities
- Institute for Sustainability, Energy and the Environment
- Interdisciplinary Health Sciences Institute
- National Center for the Supercomputing Applications
- Prairie Research Institute



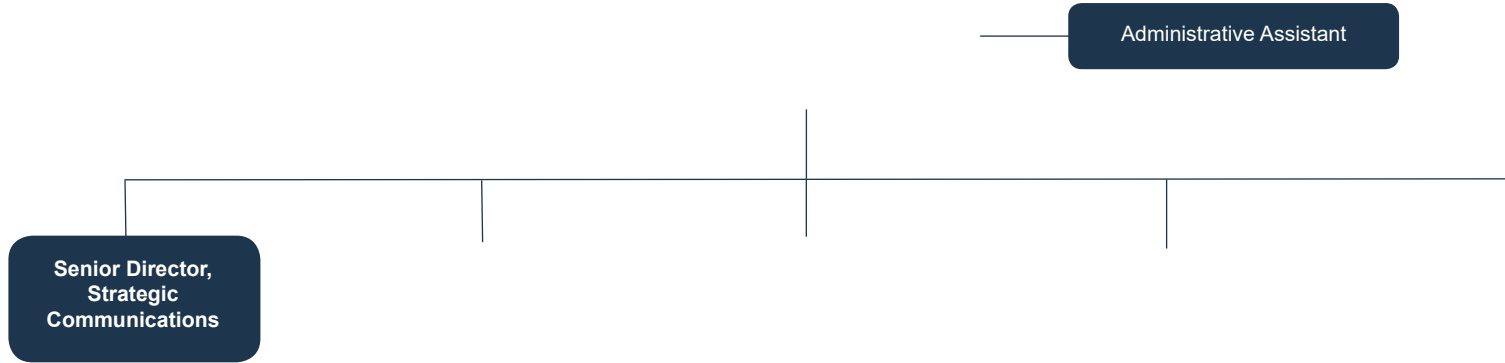
- Reporting Units**
- Beckman Institute for Advanced Science and Technology
 - Cancer Center at Illinois
 - Carl R. Woese Institute for Genomic Biology
 - Center for Social and Behavioral Science
 - Illinois Program for Research in the Humanities
 - Institute for Sustainability, Energy and Environment
 - Interdisciplinary Health Sciences Institute
 - National Center for Supercomputing Applications
 - Prairie Research Institute
 - Roy J. Carver Biotechnology Center

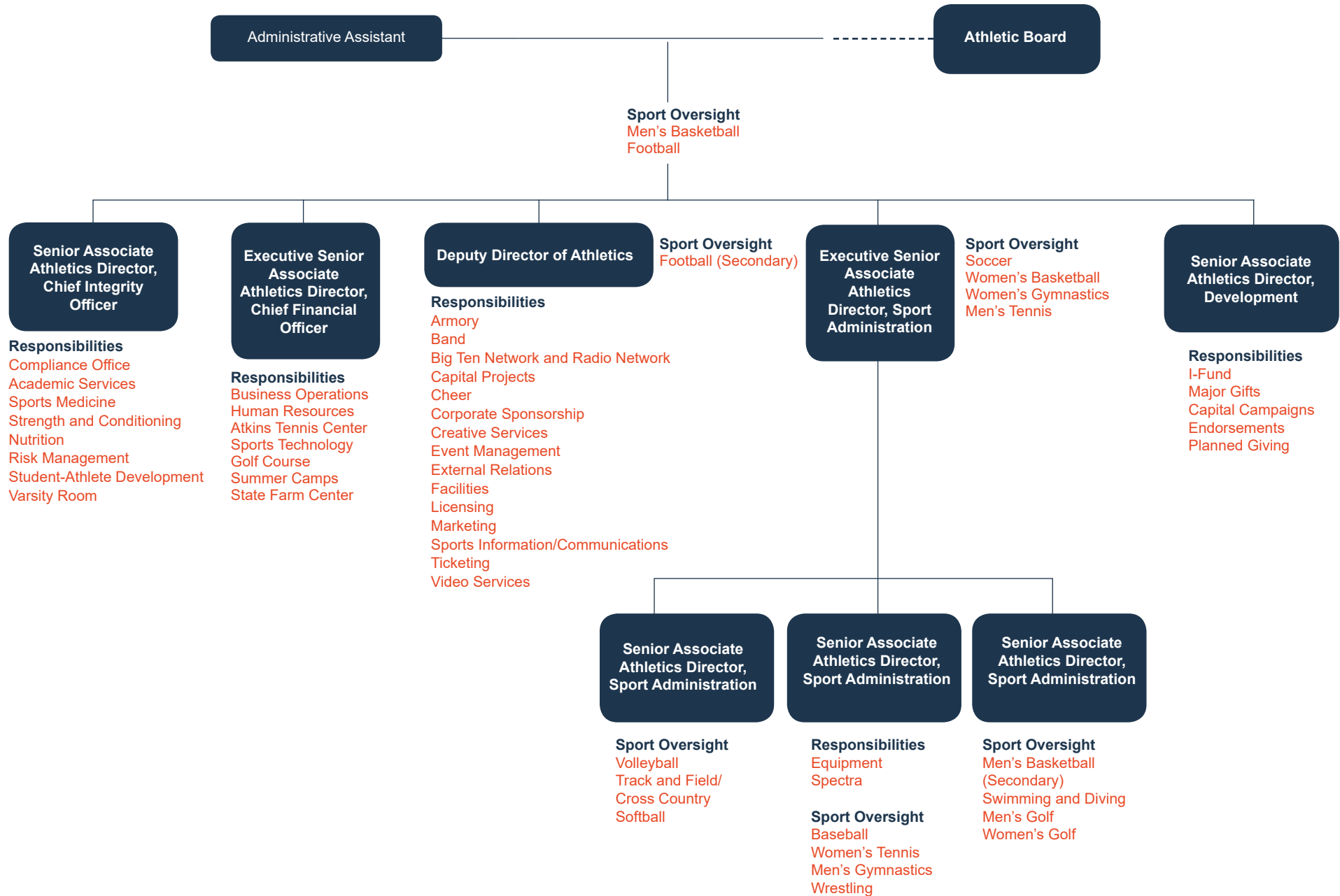


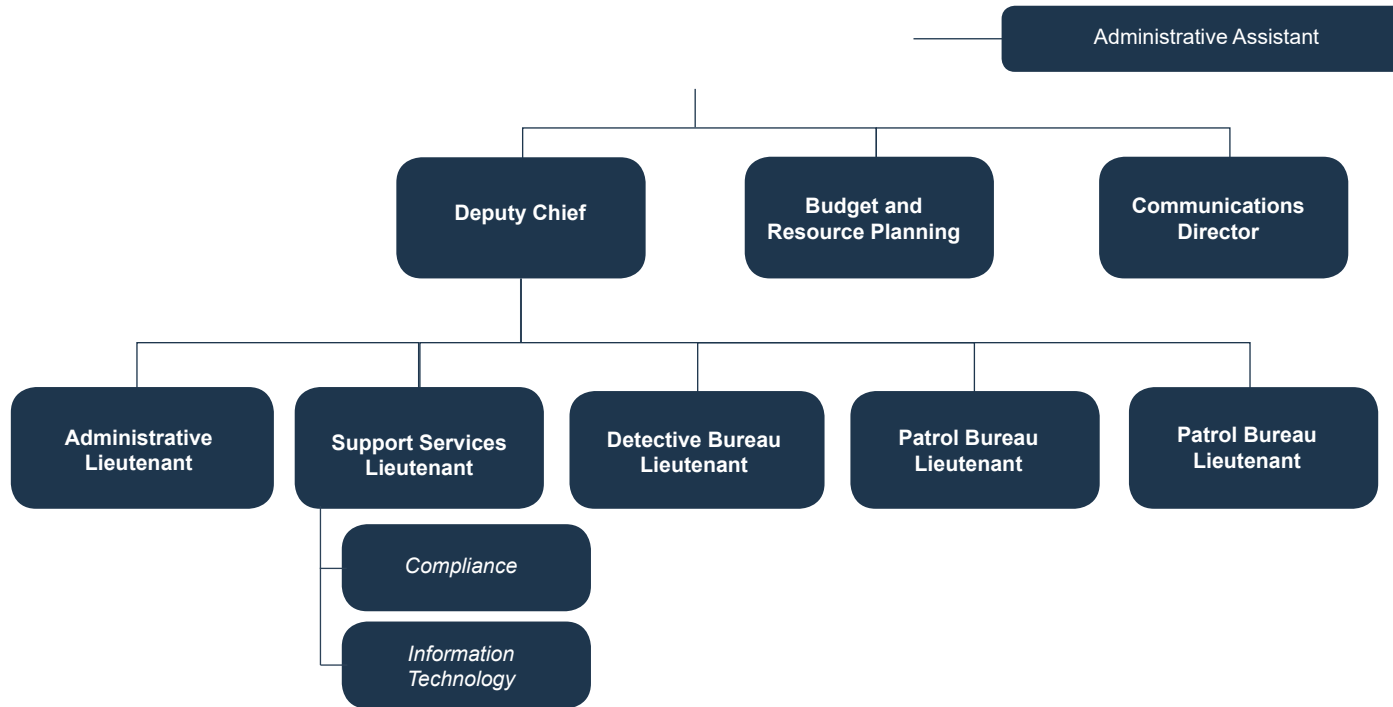
Reporting Units
 Student Success and Engagement
 *Veteran Student Support Services

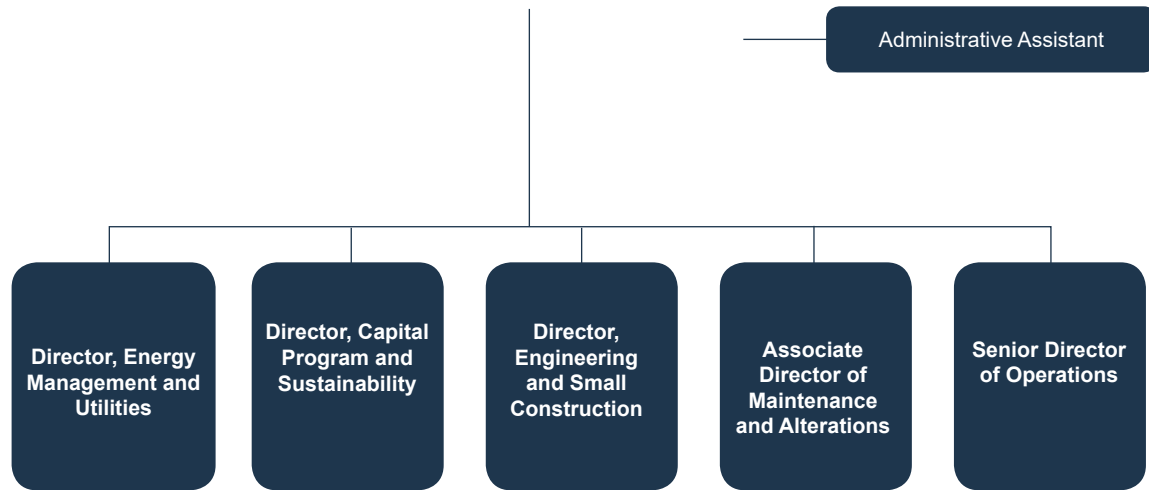
Reporting Units
 Alcohol and Other Drug Health Education Student Programs and Activities
 Campus Mail Illini Union Bookstore
 Dining and Catering Services Parent Programs
 Document Services Student Health Insurance

*Veterans Student Support Services merged with the Chez Veterans Center
 **Administrative oversight by Office of the Chancellor
 ***State Farm Center is co-managed by Student Affairs and the Division of Intercollegiate Athletics









Reporting Units

- Customer Relation and Communication
- HR, Diversity and Strategy
- Safety and Environmental Compliance
- Shared Administration Services
- Transportation and Building Services





Executive Associate Chancellor for Administration and University Relations

- Responsibilities**
 Academic Affairs Liaison
 Academic Senate Liaison
 Board of Trustees Liaison
 Campus Administrative Manual (CAM)
 Campus Charitable Fund Drive (CCFD)
 Campus and Community Day of Service
 Chancellor's Office Budget
 Community Relations Liaison
 Government Relations Liaison (State/Federal)
 Human Resources Liaison
 Local Government and Local Government Organizations
- Reporting Units**
 Academic Senate Office
 Community and Government Relations
 Office of Strategic Marketing and Branding
 Office of Special Events
 Public Engagement
 Swanlund HR Shared Service Center

Senior Associate Chancellor for Administration and Operations

- Responsibilities**
 Campus Operations
 Campus Threat Assessment Teams Liaison
 Emergency Management
 Intercollegiate Athletics Liaison
 Labor Relations Liaison
 Real Estate Liaison
- Reporting Units**
 Division of Public Safety
 Facilities and Services
 Illinois Fire Service Institute (IFSI)
 Parking Department
 Police Training Institute (PTI)
 Purchasing Department
 Willard Airport

Senior Associate Chancellor for Human Resources

- Responsibilities**
 BOT and Senate Liaison for Academic
 Staff Appointments
 Civil Service Administration
 Classification and Compensation
 Dual Career Program
 Employee Development and Learning
 Employee and Labor Relations
 Employee Representative Group Liaison (CAP and SAC)
 Extra Help Services
 Hiring Risk Assessment Review
 HR Technology
 Performance Management
 Policy Development and Administration
 Records and Appointment Processing
 Talent Recruitment and Assessment
 Union Contract Negotiations and Administration
 Wellbeing Services
- Reporting Units**
 Illinois Human Resources
 Business Operations
 Classification, Compensation, Records and Appointment Processing
 HR Policy and Administration
 Labor and Employee Relations
 Strategic Initiatives
 Talent Acquisition
 Faculty Staff Assistance Services