

Sudoku Mild No 14,844

			2		1	3		
	5			7				2
			6		5			1
1		2	4				3	6
	9				6	7		
3		4		2				
9				6			4	
			3			1		5
	3	6	8				7	

Fiendish No 14,845 **Super fiendish No 14,846**

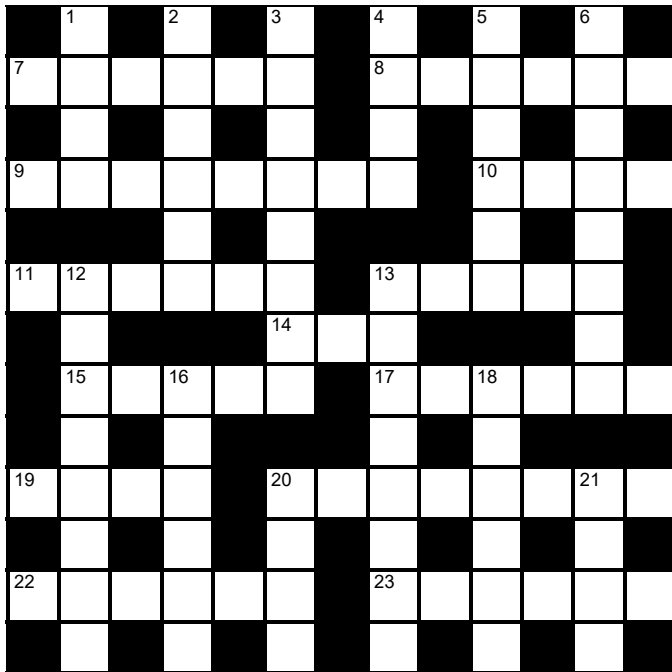
						1	5	
				1	2			6
			4				3	
		9						
	8				6	9	7	
	5			2		4	1	3
1				5	3			
8		7		9	4			
	3				8			

		3					5	
6						7		4
		7	6	1		9	8	
	9		8		5			
	7					4		
3		1			7	8		
		5	3			6		7
				4	8			
			1				3	

© PIZZLER MEDIA

Cluelines Stuck on Sudoku, Killer or KenKen? Call 0901 293 6263 before midnight to receive four clues for any of today's puzzles. Calls cost £1 plus your telephone company's network access charge. SP: Spoke, 0333 202 3390 (Mon-Fri 9am-5.30pm).

The Times Quick Cryptic No 2653 by Felix



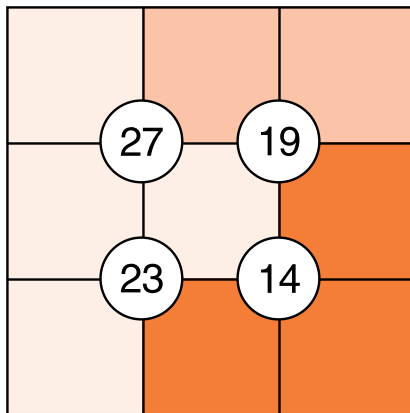
Across

- 7 Sounds and smells overwhelming one (6)
- 8 Women having ideals shattered (6)
- 9 Valuable park in very holy surroundings (8)
- 10 Head of science to take up chair (4)
- 11 Skilful band or society regularly appearing (6)
- 13 Information concerning class (5)
- 14 Reading or writing, perhaps, in each period (3)
- 15 Hence cover for firm (5)
- 17 Hustle harassed detective (6)
- 19 Wretched person without room (4)
- 20 Land found by swan swimming with boat (8)
- 22 After long time, clubs in New York providing service (6)
- 23 Extremely grasping relations in truth (6)

Down

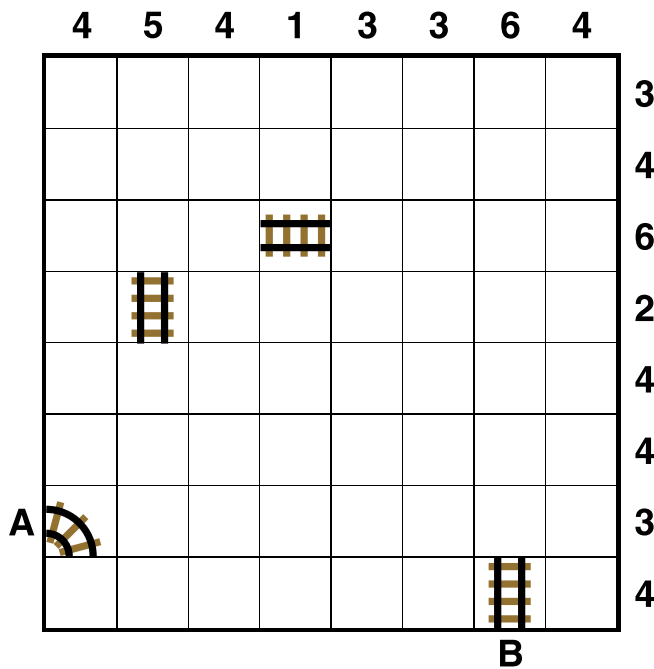
- 1 Swine, one who's uninteresting to listen to (4)
- 2 Old picture used in autopsy chosen (6)
- 3 Various roads set to be overhauled (8)
- 4 An advantage, being endlessly luxurious (4)
- 5 Strange youth? Very likely (4-2)
- 6 Last month, F Prefect's friend becoming corrupt! (8)
- 12 Remove dogsled I damaged (8)
- 13 Kaput goes vast heater! (3,5)
- 16 Bemoan unconvincing religious books (6)
- 18 Journalist having conflict with duke and king (6)
- 20 Accepts Yankee on board public transport (4)
- 21 Do, re, me, fa, so or la? (4)

Suko No 4093



Place the numbers 1 to 9 in the spaces so that the number in each circle is equal to the sum of the four surrounding spaces, and each colour total is correct

Train Tracks No 2222



Lay tracks to enable the train to travel from village A to village B. The numbers indicate how many sections of track go in each row and column. There are only straight sections and curved sections. The track cannot cross itself.

Word watch
David Parfitt

- Xyst**
 a A covered garden walk
 b A resonant wooden bar
 c A mythical river of the underworld
- Pilcrow**
 a A paragraph mark
 b A herring-like fish
 c The jackdaw
- Kennetic**
 a Having motion
 b Pertaining to the Thames or its tributaries
 c Of the acquisition of knowledge

Tetonor Tricky No 458

45	31	200	23
41	120	25	238
210	33	90	29
23	234	22	156

5				12	13	14		18		25	39
---	--	--	--	----	----	----	--	----	--	----	----

When complete, the strip below the grid can be split into eight pairs of numbers. Adding the numbers in a pair gives one of the 16 numbers in the grid. Multiplying them gives a different number in the grid. For example, a 4 and 6 in the strip could be paired to make 10 (4+6) and 24 (4x6) in the grid. Enter each sum below the corresponding number in the grid. The blanks in the strip must be deduced, bearing in mind the numbers are listed in ascending order.

The next Tetonor puzzle will appear on Tuesday

Codeword No 5192

	10	15	16	10	25	1	14		1	11	1	22
21		1		22		13		13		3		1
9	26	19	22	1	10	15		3	8	17	15	22
1		15		26		10		20		18		15
13	1	22	3	14		26	22	15	4	25	14	
5				24		13		10		26		21
15	17	4	3	14	2		9	3	10	14	15	23
22		25		1		13		25				17
	4	22	26	7	7	23		21	1	14	20	3
10		26		26		9		17		26		17
21	12	3	3	17		24	22	15	8	15	22	23
1		25		19		1		21		19		9
22	3	21	23		24	14	25	21	6	15	22	

⚡ B Ø D E F G H I J K L M N O P Q R S T U V W X Y Z

1	A	2	3	4	5	6	7	8	9	10	11	12	13	C
14	15	16	17	18	19	20	21	22	R	23	24	25	26	

Every letter in this crossword-style grid is represented by a number from 1 to 26. Each letter of the alphabet appears in the grid at least once. Use the letters already provided to work out the identity of further letters. Enter letters in the main grid and the smaller reference grid until all 26 letters of the alphabet have been accounted for. Proper nouns are excluded. *Yesterday's solution, right*

Cluelines **Stuck on Codeword?** To receive 4 random clues call 0901 293 6262 or text TIMECODE to 64343. Calls cost £1 plus your telephone company's network access charge. Texts cost £1 plus your standard network charge. For the full solution call 0905 757 0142. Calls cost £1 per minute plus your telephone company's network access charge. SP: Spoke, 0333 202 3390 (Mon-Fri, 9am-5.30pm).

Winning Move

8								
7								
6								
5								
4								
3								
2								
1								
	a	b	c	d	e	f	g	h

Black to play. This position is from Katkov-Veinberg, Team Championship, Israel 2024.

A moderately common theme in chess is that one player's queen invades the opposing position and wins material by snaffling a rook in the corner. The problem is that the queen is then badly out of play and sometimes, as here, can become trapped. How did Black send the cavalry to the rescue?

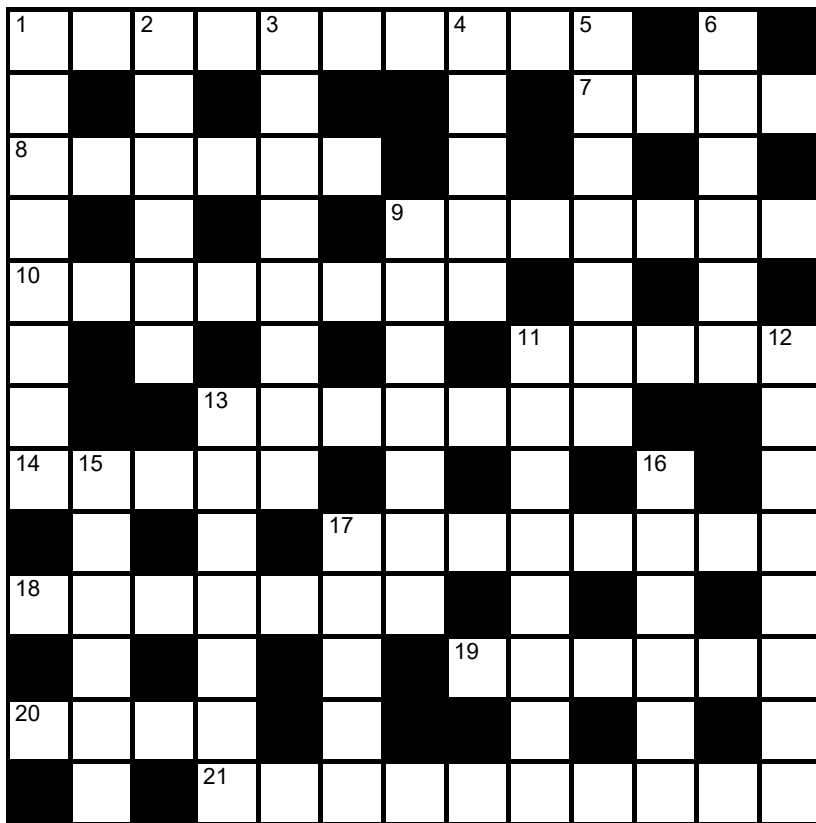
Lexica Easy No 7357

Hard No 7358

...	S	E	X	B	T	E	...	S	F	●	U	E	H	...
S							●	R						C
...							...	E	A					H
●							...	E	L					Y
N							...	A	A					E
E							...	N	A					R
Z							...	G	K					Y
A						
...	●	N	W	A	C	T	...	A	I	A	L	S	J	...

Slide the letters either horizontally or vertically back into the grid to produce a completed crossword. Letters are allowed to slide over other letters

times2 Crossword No 9508



Across

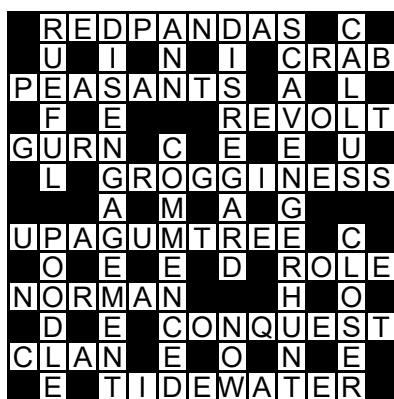
- 1 Tactful (10)
- 7 Person on a computer (4)
- 8 (Of feet) adapted for swimming (6)
- 9 Resolute, loyal (7)
- 10 Most important task (8)
- 11 18th-century Swiss mathematician (5)
- 13 Formal speech (7)

- 14 Ransack (5)
- 17 Unit of digital information (8)
- 18 Whale's layer of fat (7)
- 19 Goodness (6)
- 20 Former name of Thailand (4)
- 21 Habituated (to) (10)

Down

- 1 Cloudburst, deluge (8)
- 2 Open to all (6)
- 3 Supersede (an existing decision, rule or setting) (8)
- 4 Irritable, quarrelsome (5)
- 5 Type of cloud (7)
- 6 Save from danger (6)
- 9 First course (7)
- 11 Daydreamer (8)
- 12 Ecclesiastical title (8)
- 13 US Deep South state (7)
- 15 Decoratively embedded (6)
- 16 Methodical arrangement of interconnected parts (6)
- 17 Physician (5)

Solution to Crossword 9507



Need help with today's puzzle? Call 0905 757 0143 to check the answers. Calls cost £1 per minute plus your telephone company's network access charge. SP: Spoke, 0333 202 3390 (Mon-Fri 9am-5.30pm).

Brain Trainer

EASY	72	÷ 12	SQUARE IT	+ 9	$\frac{2}{5}$ OF IT	+ 9	$\frac{2}{3}$ OF IT	+ 16	÷ 2	+ 6	ANSWER	
MEDIUM	198	+ 77	$+\frac{2}{5}$ OF IT	x 2	30% OF IT	+ 87	x 2	$\frac{5}{6}$ OF IT	40% OF IT	- 77	ANSWER	
HARDER	265	x 3	$+\frac{1}{5}$ OF IT	x 4	- 998	$+\frac{1}{2}$ OF IT	+ 93	70% OF IT	- 712	$\frac{7}{8}$ OF IT	ANSWER	

Polygon



From these letters, make words of **four** or more letters, always including the central letter. Answers must be in the *Concise Oxford Dictionary*, excluding capitalised words, plurals, conjugated verbs (past tense etc), adverbs ending in LY, comparatives and superlatives.
How you rate 14 words, average; 19, good; 24, very good; 30, excellent

Yesterday's answers
 emotion, into, intone, meno, mention, mento, mono, monte, moon, moot, mote, motion, neon, nome, nomen, none, nonet, noni, noon, **noontime**, note, notion, omen, omit, onion, onto, tenon, tome, tone, tonne, toon

Cell Blocks No 5075

		2		2
		4		
		2	2	2
14				
	6			
		4	2	
			4	5

Divide the grid into square or rectangular blocks, each containing one digit only. Every block must contain the number of cells indicated by the digit inside it.

Set Square No 3694

	x		x	4	= 140
x		x		x	
	÷		+		= 10
x		-		-	
	-	3	x		= 36
=		=		=	
360		4		2	

Enter each of the numbers from 1 to 9 in the grid, so that the six sums work. We've placed two numbers to get you started. Each sum should be calculated left to right or top to bottom.

Please note, BODMAS does not apply

Killer Gentle No 9422

9			23	10		7	13	
14		15			9		3	
7			3			16	13	
12	8	5		9			17	
		17			15	11	4	
5	17	4	12				6	
			12	22	11		15	16
15		11			3			
5						11		

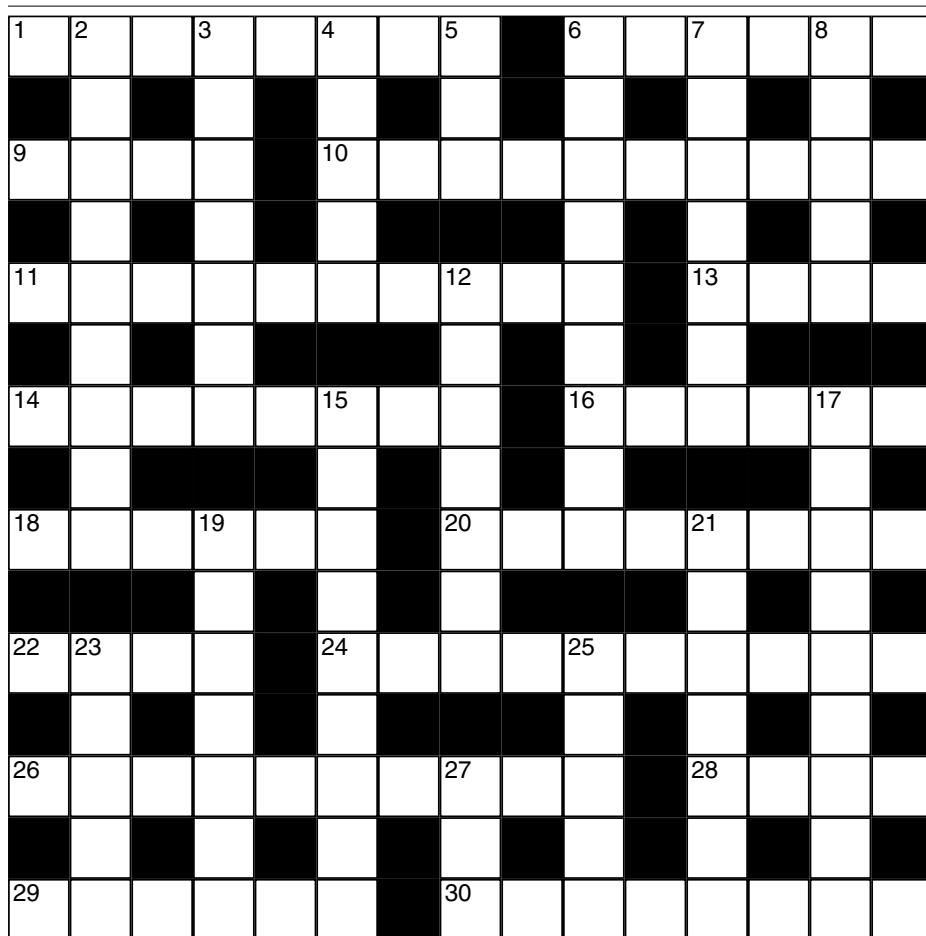
Killer Tough No 9423

12	18			20			14	
	7	20			19			
3				23				13
	20	15	13		21			
				10		36	23	
20		21						
				8			13	
7	13	19		7			4	6

As with standard Sudoku, fill the grid so that every column, every row and every 3x3 box contains the digits 1 to 9. Each set of cells joined by dotted lines must add up to the target number in its top-left corner. Within each set of cells joined by dotted lines, a digit cannot be repeated.

Cluelines Stuck on Sudoku, Killer or KenKen? Call 0901 293 6263 before midnight to receive four clues for any of today's puzzles. Calls cost £1 plus your telephone company's network access charge. SP: Spoke, 0333 202 3390 (Mon-Fri 9am-5.30pm).

Times Crossword 28,894



ACROSS

- 1 Book Hearts defender needing a way in (8)
- 6 Dark and small Iberian chap covering face (6)
- 9 Back from dig, strike kind of rock (4)
- 10 Soda with lime or rum for convenience (6,4)
- 11 Forbidden urge to which writer's admitted (10)
- 13 To boot leader of government out of Lagos, a new order's required (4)
- 14 American novelist caught in crime den (8)
- 16 One who copies head of Cardiff University's resumé (6)
- 18 One event with barristers concerning chambers (6)
- 20 One decides a set time, namely before holiday (3-5)
- 22 Ostentatiously good, a female performer with no regrets (4)
- 24 Summer problem of boater, say, catching English butterfly? (10)
- 26 Staying dry, mostly declining to conserve energy (2,3,5)
- 28 Duck eating river weed (4)
- 29 Save money in Asia the wrong way, creating dispute (6)
- 30 Organists wanting doughnut breaking the scales? (4,4)

DOWN

- 2 Expert handling bad reactions is to go for Parisian meat (9)
- 3 Rather dry month including odd times temperature drops (4-3)
- 4 Maybe bitter king secretes billions, having more upstairs? (5)
- 5 Nanny's little one is Josh (3)
- 6 Male dabbler left in tool store with tool (9)
- 7 Spread around centre of Croatian seaside resort (7)
- 8 Stands apart from British men put in the corner? (5)
- 12 Possibly battier accessory for father (7)
- 15 Calm down, maintaining strength completely (3,3,3)
- 17 Static car's plate seen in capital (9)
- 19 Lives, I see, with lover around Persian city (7)
- 21 Group of engineers with ruddy huge screen (7)
- 23 Asian region in Chennai? No, Islamabad, on reflection (5)
- 25 It restrains worker, perhaps a seasonal deliveryman (5)
- 27 He conceivably needs flag raised (3)

Yesterday's solution 28,893



Check today's answers by ringing 0905 757 0141 by midnight. Calls cost £1 per minute plus your telephone company's network access charge. SP: Spoke 0333 202 3390.

Solutions

Quick Cryptic 2652

F	E	A	S	T	I	C	E				
I	L	R	E	N	O	U	N	C	E	D	
G	U	L	L	Y	W	R	O	I			
U	I	S	P	A	C	E	S	U	I	T	
R	T	T	R	C	A	N	O				
E	W	E	I	N	D	I	C	A	T	O	R
	R	N	U	E							
S	T	A	R	G	A	Z	E	R	R	A	M
C	E	I	T	P	A						
R	E	I	G	N	I	T	E	S	O	R	
I	O	O	H	E	V	I	C	T			
M	O	N	A	S	T	E	R	Y			
P		Y	R	S	A	T	I	N			

Codeword 5191

Q	U	I	N	I	N	E	S	H	E	L	F
U	N	G	N	W	X	U					
A	R	G	O	N	T	R	A	P	P	E	R
L	L	I	I	G	L	Z					
I	D	E	N	T	I	T	A	T	E		
F	I	Y	B	I							
Y	A	R	R	O	C	A	T	N	A	P	
A	N	F	C	A	R						
L	U	D	O	C	O	C	K	A	T	O	O
I	D	P	E	C	I	V					
V	A	L	I	A	N	T	O	U	T	D	O
I	E	C	U	M	H	S					
D	O	D	G	Y	S	S	U	B	J	E	C

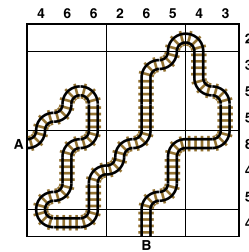
Kakuro 3690

9	7			1	2	8	7		
8	9	7		3	8	6	9	5	7
		2	4		9	7		8	9
7	3	1	2	4			4	6	8
9	7	3	1	8	6		7	9	
	9	5		9	7	2	1	3	6
9	8	4			3	4	2	1	5
7	5		1	3		1	3		
8	6	9	2	1	3		5	3	1
2	7		2	1			1	2	

Sudoku 14,841

1	6	9	4	7	2	5	3	8
3	7	5	9	6	8	1	4	2
4	2	8	3	5	1	7	9	6
8	5	1	2	3	9	6	7	4
2	4	6	8	1	7	3	5	9
9	3	7	5	4	6	2	8	1
6	8	2	7	9	5	4	1	3
7	9	4	1	2	3	8	6	5
5	1	3	6	8	4	9	2	7

Train Tracks 2221



Sudoku 14,842

3	9	5	7	4	2	6	1	8
4	7	6	1	8	9	5	3	2
1	8	2	6	5	3	4	9	7
9	2	8	5	3	6	1	7	4
6	1	7	8	2	4	3	5	9
5	4	3	9	7	1	2	8	6
7	6	9	4	1	5	8	2	3
8	3	1	2	6	7	9	4	5
2	5	4	3	9	8	7	6	1

Cell Blocks 5074

10									
						2	2		
4	10								
							4		
		4				4			
3	2		2	2					

Set Square 3693

8	÷	4	+	5
-		-		+
9	+	2	÷	1
+		+		÷
3	+	7	+	6

Lexica 7355

K	N	I	V	E	S
	E				K
A	T	E			A
W		N			T
E		V			E
D	R	Y			

Sudoku 14,843

5	1	7	9	4	6	3	8	2
6	4	8	7	2	3	5	9	1
2	3	9	5	8	1	6	4	7
4	5	6	8	1	7	2	3	9
8	9	1	6	3	2	7	5	4
3	7	2	4	5	9	1	6	8
7	8	3	2	9	5	4	1	6
1	6	4	3	7	8	9	2	5
9	2	5	1	6	4	8	7	3

Futoshiki 4731

3	5	1	2	4		
2	>	1	5	>	4	3
1	3	4	5	2		
5	4	2	3	>	1	
4	2	3	1	5		

KenKen 6183

3	2	1	5	6	4
4	5	6	2	1	3
2	6	4	3	5	1
6	3	5	1	4	2
5	1	2	4	3	6
1	4	3	6	2	5

Lexica 7356

	B		D		
	A	W	A	R	D
	C		N		R
	K		D	U	E
	C	E	L	L	A
	R		E	L	M

Today's solutions

Killer 9420

6	7	1	5	8	3	9	2	4
3	4	8	9	2	6	1	7	5
9	5	2	1	4	7	8	6	3
2	9	4	3	1	8	6	5	7
7	8	6	2	5	9	4	3	1
5	1	3	6	7	4	2	8	9
4	6	5	7	9	2	3	1	8
1	2	9	8	3	5	7	4	6
8	3	7	4	6	1	5	9	2

Killer 9421

4	5	2	1	8	3	9	7	6
9	7	1	6	5	2	4	8	3
3	8	6	7	4	9	5	1	2
2	1	7	8	9	5	3	6	4
6	4	9	3	2	1	7	5	8
8	3	5	4	6	7	1	2	9
5	9	4	2	7	8	6	3	1
1	6	8	5	3	4	2	9	7
7	2	3	9	1	6	8	4	5

Cryptic Quintagram

- 1 Flax
- 2 Redux
- 3 Hatbox
- 4 Fort Knox
- 5 Middlesex

Suko 4093

6	8	5
27	19	
9	4	2
23	14	
3	7	1

Brain Trainer

- Easy 23
- Medium 135
- Harder 2,023

Word watch

- Xyst** (a) A covered garden walk (*Collins*)
- Pilcrow** (a) A paragraph mark (*Chambers*)
- Kennetic** (c) Of the acquisition of knowledge (*OED*)

Chess — Winning Move

After 1 ... Rxe3+! the reply 2 Kxe3 allows 2 ... Qxf1 and Black wins easily. Therefore 2 Kf2 is forced but then 2 ... Bg3+ 3 Kg1 and now the black queen dramatically escapes imprisonment with 3 ... Qxf1+! 4 Kxf1 Rcl mate

Sudoku difficult

6				4	
	2				1
	8	4	5	9	
			3		
		8	6		2
	2		5	1	6
8	7		4		3
		6	8		5
2	3				9

Killer deadly

Fill the grid so that every column, every row and every 3x3 box contains the digits 1 to 9. Each set of cells joined by dotted lines must add up to the target number in its top-left corner. Within each set of cells joined by dotted lines, a digit cannot be repeated.

26		12		21	21		17	
			8				20	
11	11			30		22		
	10							
19							25	
	16		21			15		19
		17		18				
						8		
23			8		7			

Suko

30	18	
22	16	

10	15	20
----	----	----

Place the numbers 1 to 9 in the spaces so that the number in each circle is equal to the sum of the four surrounding spaces, and each colour total is correct

Codeword

Every letter in the crossword-style grid, right, is represented by a number from 1 to 26. Each letter of the alphabet appears in the grid at least once. Use the letters already provided to work out the identity of further letters. Enter letters in the main grid and the smaller reference grid until all 26 letters of the alphabet have been accounted for. Proper nouns are excluded.

	13	12	18	8	9	22	24		3	22	11	15
15		22				25		18		4		13
26	12	4	9	5	4	19		24	22	21	13	17
6		11		4		24		19		9		19
22	25	19	12	15		23	15	20	18	21	3	
8				6		3		22		15		15
19	20	17	22	12	21		13	12	15	3	22	24
24		15		4		14		15				15
	19	23	15	25	9	19		26	15	10	19	12
22		21		23		15		23		24		13
25	12	18	7	19		25	19	19	1	18	9	17
4		24		6		22				16		3
9	18	11	17		18	24	2	4	12	19	6	

A B C D E F G H I J K L M N O P Q R S T U V W X Y Z

1	2	3	4	5	6	7	8	9	S	10	11	12	13
14	15	16	17	18	19	20	21	22	23	24	25	26	

Mini Sudoku

Fill in the grid so that every column, every row and every 3x2 box contains the digits 1 to 6

					4
		2			1
	3		4		
		5	3		6
3	2		6		

Solutions in Monday's Times2

THE  TIMES

MindGames Thursday April 18 2024
Brain boost puzzles

Yesterday's solutions

SAMURAI

1	6	9	8	2	5	4	7	3	7	9	6	2	4	8	5	3	1
4	8	3	9	7	6	2	1	5	2	3	5	1	9	6	4	8	7
5	2	7	1	4	3	9	6	8	1	8	4	7	5	3	2	9	6
3	9	4	2	6	8	1	5	7	6	5	1	9	3	2	8	7	4
6	5	1	4	9	7	3	8	2	9	4	7	8	1	5	6	2	3
2	7	8	5	3	1	6	4	9	3	2	8	6	7	4	9	1	5
7	4	2	6	8	9	5	3	1	8	9	7	4	6	2	3	8	7
9	3	5	7	1	4	8	2	6	4	1	3	5	7	9	4	2	1
8	1	6	3	5	2	7	9	4	6	2	5	8	1	3	5	6	9
						4	7	8	2	6	9	3	5	1			
						6	5	9	3	7	1	2	4	8			
						2	1	3	5	8	4	7	9	6			
1	6	4	2	7	9	3	8	5	9	4	6	1	2	7	5	4	6
3	2	5	6	1	8	9	4	7	1	3	2	6	8	5	3	9	2
7	8	9	5	4	3	1	6	2	7	5	8	9	3	4	1	7	8
4	7	3	1	6	5	8	2	9				2	9	8	6	1	4
2	1	8	9	3	7	4	5	6				4	5	6	7	2	3
9	5	6	4	8	2	7	1	3				3	7	1	9	8	5
6	3	7	8	5	1	2	9	4				5	4	9	2	6	7
5	9	1	3	2	4	6	7	8				7	1	2	8	3	9
8	4	2	7	9	6	5	3	1				8	6	3	4	5	1

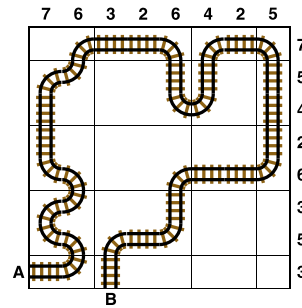
SUKO

9	8	4
7	5	6
3	1	2

MINI SUDOKU

6	1	2	4	3	5
5	4	3	1	6	2
3	2	6	5	1	4
4	5	1	6	2	3
1	3	5	2	4	6
2	6	4	3	5	1

TRAIN TRACKS



FUTOSHIKI

1	<	2	5	3	4	
			∨			
4	5	2	>	1	3	
			∨			
3	4	1	5	2		
5	3	4	>	2	1	
2	1	<	3	<	4	5

SUDOKU

7	6	3	1	8	2	5	4	9
1	5	9	4	6	7	2	3	8
2	8	4	3	5	9	1	6	7
9	1	6	8	4	3	7	5	2
5	3	2	7	9	6	8	1	4
8	4	7	5	2	1	3	9	6
3	9	1	2	7	4	6	8	5
6	2	5	9	1	8	4	7	3
4	7	8	6	3	5	9	2	1

KILLER

9	5	3	8	7	2	4	1	6
1	2	4	3	9	6	5	8	7
8	6	7	4	1	5	3	9	2
7	9	2	5	8	1	6	3	4
3	4	5	7	6	9	1	2	8
6	8	1	2	4	3	9	7	5
4	7	9	1	5	8	2	6	3
5	3	6	9	2	7	8	4	1
2	1	8	6	3	4	7	5	9

CODEWORD

	D	E	S	E	R	V	E	A	J	A	R	
S	Q			I	A		A		A		A	
U	N	U	S	U	A	L	N	I	C	E	R	
B	A	N	I		T		U		E			
S	A	L	V	O		F	R	I	Z	Z	Y	
I		R		Y		F			Z		C	
D	E	B	A	T	E		F	R	U	I	T	Y
Y	U		H		M		E				A	
G	R	O	O	V	E		E	L	F	I	N	
S	D		D		A		Z		E		I	
P	H	O	T	O		S	W	E	R	V	E	D
U	C		X		L				E		E	
R	A	K	E		M	Y	S	T	E	R	Y	