

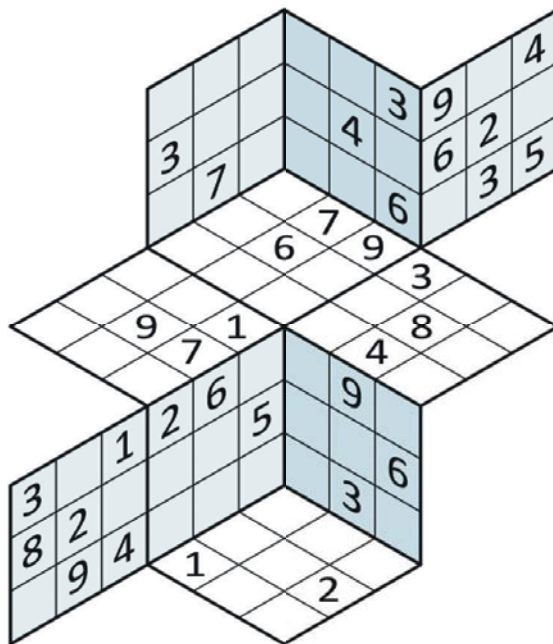
Samurai Sudoku No 922 — Medium

8	6		4	3	2			6		8				
4	1	6	5		7	9		8			9	5		
3	5				4			1			8	2		
			3	7				7		4	5		8	1
1					4	8			8	3		6		
		1				3			1	7	6		4	
8							9			9	2		5	
5		5			9		5			6	1			8
			9	1	5			2						
			4		3	9	1							
									3		1			8
3		8	7			7		8		5				6
8		2	5			6								
6		4	2	9				4		9				
	3		1	7				2	8					1
9	1		7	3						4	3			
6	8							3			6	7		
7	1				9			5	1		7	2	3	9
		9						9	7	8		5	2	

Tredoku

No 1836 — Hard

Tredoku is similar to Sudoku: the digits 1 to 9 must appear once only in each 3x3 box and in each line of nine consecutive cells. However, since the puzzle is three-dimensional, the lines may be straight or bent around angles. Follow each line's direction in search of clues.



Square Routes®

No 269 — Medium

Ian Simpson & Richard Heald

				*
*		*		
	*		*	
	*		*	
	*			*

FIRE
STATION
MASTER
PAGE
TURNER
PRIZE
FIGHTERS

Put one letter in each cell so that each word on the right can be spelt out by moving from cell to cell without using diagonal moves. You can use a cell more than once in a word (including backtracking into a cell you've just used), but double letters (eg, the LL in ALL) must use two adjacent cells. The words start in the coloured cells and the vowels are shown by asterisks.

Sudoku No 14,888 — Fiendish

		3	6	5			
	5	8		9		2	
			9				
2	1		4			8 5	
		9	1		6	2	
6							7
	4	2				3	9
	9	8				1	6

How to solve Sudoku. Fill the grid so that every column, every row and every 3x3 box contains the digits 1 to 9

Stuck on KenKen, Killer or Sudoku?

Call 0901 293 6263 before midnight to receive four clues for any of today's puzzles. Calls cost £1 plus your telephone company's network access charge. SP: Spoke, 0333 202 3390 (Mon-Fri 9am-5.30pm).

Killer No 9451 — Deadly

19		26	16		11		25	11
9			5	27		16	20	9
20								
			20					
13		22			8		22	
11	9					21		
			10		13	8		16
18								

Fill the grid so that every column, every row and every 3x3 box contains the digits 1 to 9. Each set of cells joined by dotted lines must add up to the target number in its top-left corner. Within each set of cells joined by dotted lines, a digit cannot be repeated. **For solutions to KenKen, Sudoku & Killer see Times2 on Monday**

KenKen No 6198 — Medium

48×			90×	20×	
3+	2-	3÷			
			2-		3÷
2-	13+		5-		
	30×		2÷	2÷	
		5		1-	

All the digits 1 to 6 must appear in every row and column. In each thick-line "block", the target number in the top left-hand corner is calculated from the digits in all the cells in the block, using the operation indicated by the symbol.

Cryptic Quintagram®

Solve all five cryptic clues using each letter underneath once only

- 1 With work coming later, not exactly busy (3)
- 2 Advantage with hotel being lavishly appointed (5)
- 3 Unexpected, awkward rub when fitting clothes (6)
- 4 Dancing, and leaving after function (8)
- 5 Start fighting judge, albeit not furiously (4,6)

—	—	—	—	—	—	—	—	—
A	A	A	B	B	C	E	G	
G	H	I	I	J	L	L	N	
N	N	O	O	O	P	P	P	
R	S	T	T	T	T	U	U	

Word Watch

David Parfitt

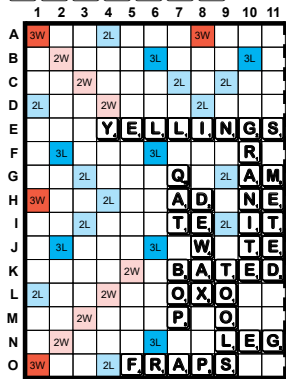
- Hawkshaw**
 - a. A dandelion
 - b. A heron
 - c. A detective
- Kobold**
 - a. A programming language
 - b. A Japanese cattle breed
 - c. A spirit of a mine
- Pereion**
 - a. A chargeless particle
 - b. A crustacean's thorax
 - c. A ritual bonfire
- Crepehanger**
 - a. An idler
 - b. A pessimist
 - c. An anticlimax

Scrabble® Paul Gallen

The current world Scrabble champion, David Eldar of Melbourne, is widely regarded as an accomplished poker player. There is no doubt that he uses many of his poker skills in his Scrabble endeavours. For example, he is not afraid to take calculated gambles in order to change the momentum of a game. One encounter in his recent win at the Australian National Scrabble Championship included two instances where he was happy to gamble in order to engineer a comeback.

In the first position, Eldar trailed by 61 points while holding the following rack.

A I M O S T U



There was no bonus word available, but Eldar needed such a play in order to get back into the game. He played OUMA

(D2a) for 28 points, keeping IST. The key feature of this move was that it allowed for plays in column I, hooking OUMA to form DOUMA or LOUMA. This was aggressive by Eldar as he did not hold a D or L, leaving himself open to a high-scoring response from his opponent. Can you find a more conservative play, using five tiles and scoring 27 points, which would have utilised all of his vowels?

The move worked out perfectly as Eldar's next rack was DEFIIST, allowing him to play FIDEIST (Bld) for 99 points. Despite this, his prospects of winning the game remained bleak as he trailed by 81 points with two tiles in the bag. He held the following rack.

E E H L N R U

Eldar played a speculative move, FEH (Bla), as shown below, in the hope of picking AO, the two remaining vowels in the bag. Incredibly, he drew these two tiles. His opponent blocked the possibility of ALEURON (A3a) before Eldar ended the game with the spectacular MYONEURAL (D4d) for 80 points to clinch the Australian national title.

Definitions
 OUMA a grandmother
 MYONEURAL of the nerves and muscles

Collins Official Scrabble Words is the word authority used. Word positions use the grid reference plus (a)cross or (d)own.

2L double letter square (dl) 3L triple letter square (tl) 2W double word square (dw) 3W triple word square (tw)



Letter values

- 1 point: A E I O U
- 4 points: F H V W Y
- 2 points: D G
- 3 points: B C M P
- 3 points: K = 5
- 4 points: J X = 8
- Q Z = 10

SCRABBLE® is a registered trademark of J. W. Spear & Sons Ltd ©Mattel 2024

Chess David Howell

A new dawn
 Chess is coming back to our TV screens. Four decades after the BBC aired *The Master Game* from 1976 to 1983, BBC 2 has commissioned a new eight-episode chess programme, *Chess Masters*, where successful applicants will vie for the title.

While details on the exact format are yet to be announced, it is likely viewers will be treated to an in-depth look into the pressures of competitive chess, complete with dramatic blunders and high emotion. The series — created by Curve Media — will hope to attract a new audience to chess, building on the runaway success of the Netflix hit *The Queen's Gambit*.

The original *Master Game* was a triumph of ingenuity at a time when TV special effects were in their infancy. Participants included the world champion Anatoly Karpov, as well as the renowned British grandmasters Tony Miles and Nigel Short. Players were shown battling it out in a live studio while talking through their thought processes.

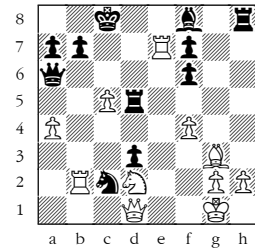
It was all smoke and mirrors, of course. The real games were played beforehand, and reenacted in the studio, with voiceovers added retrospectively. Certain players would attempt to use hindsight to put a positive sheen on their more questionable moves. In one episode, the Dutch grandmaster Jan Hein Donner said: "I will allow checkmate; it makes for good television." In reality, he had missed it.

Ironically, the *Master Game* episode that would have gained the biggest audience, the 1983 final between Karpov and Miles, was never broadcast on British TV due to a technicians' strike.

White: Anatoly Karpov
Black: Tony Miles
BBC Master Game Final, Bath 1983

Caro-Kann Defence
 1 e4 c6 2 d4 d5 3 Nd2 dxe4 4 Nxe4 Nf6 5 Nxf6+ gxf6 Capturing in this manner is provocative and geared towards chaos, often a good strategy against a superior opponent. Nowadays my favourite line, 5...exf6, maintaining a safer kingside, is more popular. 6 Nf3 Bf5 7 Bf4 Nd7 8 c3 Qb6 9 b4 One year later, a fully prepared Karpov improved with 9 Bd3 against Miles and won comfortably. 9...e5 10 Bg3 10 dxe5 fxe5 11 Nxe5? Bg7! is Black's crafty idea. 10...O-O-O An equally combative option was 10...a5. If 11 a3 axb4 12 axb4 Rxa1 13 Qxa1 Bxb4! 13 cxb4 Qxb4+ 14 Nd2 0-0 the white king is stranded. 11 Be2 h5 12 O-O Be4 13 Nd2 Opposite-side castling has produced the mess that Miles wanted. Though Karpov is objectively doing well, he is now forced to trade blows with the streetfighter from Birmingham. 13...Bd5 14 Bxh5 exd4 15 c4 Be6 16 a3 Ne5 17 Re1 d3 18 c5 Qb5 19 Rb1 Karpov spent 30 minutes on this move. 19...Bh6 20 a4 Qa6 21 f4 We start to see glimpses of Karpov's discomfort. He generally disliked being obliged to make

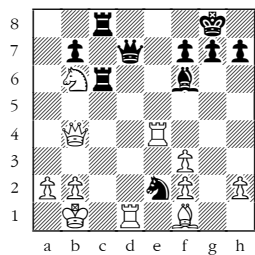
such committal decisions. 21...Nc4 22 b5 cxb5 23 Rxb5 Na3! Miles, playing confidently, had obtained a significant lead on the clock. 24 Rb2 Nc2 25 Bf3 Bd5 26 Re7 Bf8 27 Bxd5 Rxd5



As the pressure mounts, we see the first big error of the game. 28 Rbxb7? An incredible oversight for a world champion in his prime. Instead 28 Rxb7 Bxc5+ 29 Bf2 Bb6 leaves the position unclear. 28...Bxe7 29 Rxe7 Qc6 30 Rxf7 Rxc5 Black returns the favour. Better was 30...Nd4, threatening 31...Ne2+. 31 Qg4+ f5 32 Qg7? Panic under time pressure. Karpov falters again with only minutes left on his clock. 32 Rxf5 would have kept the position balanced. 32...Re8 33 h4 Ne3 Black has extra material and an ongoing attack. Miles makes no mistake. 34 Bf2 Rcl+ 35 Kh2 Ng4+ 36 Kg3 Nxf2 37 Nf3 Or 37 Kxf2 Re2+. 37...Ne4+ 38 Kh2 d2 39 Nxd2 Nxd2 White lost on time. Here Karpov's time ran out, but White's position is hopeless anyway.

Winning Move

White to Play. Variation from Short-Miles, Brighton 1984. Black has set up multiple deadly threats. How can White deal with these threats and emerge with a decisive advantage?

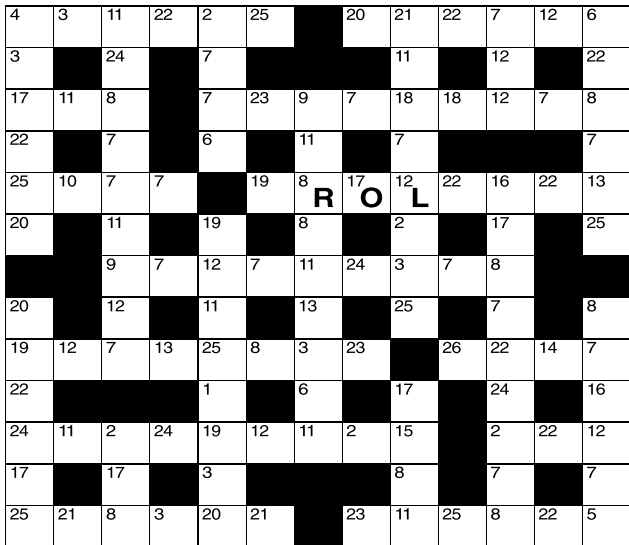


The first correct entry drawn on Thursday wins *The Times Mindset Puzzles Book 1* and *The Sunday Times Teasers Book 2*. Two runners-up will receive a book prize. Answers on a postcard to: The Times Winning Move, PO Box 2164, Colchester, Essex CO2 8LJ, or email to: winningmove@thetimes.co.uk. Open to 18+, UK and ROI residents only. The answer will be published next Saturday.

Solution to last week's puzzle: 1...Qa1! wins. For example, 2 Rxa1 e1Q+ 3 Rxel Rxel mate.

The winner is Gerry Devlin of Petersfield, Hants. The runners up are Philippe Auclair of London W14 and Michael Radcliffe of London SW11.

Codeword No 5206



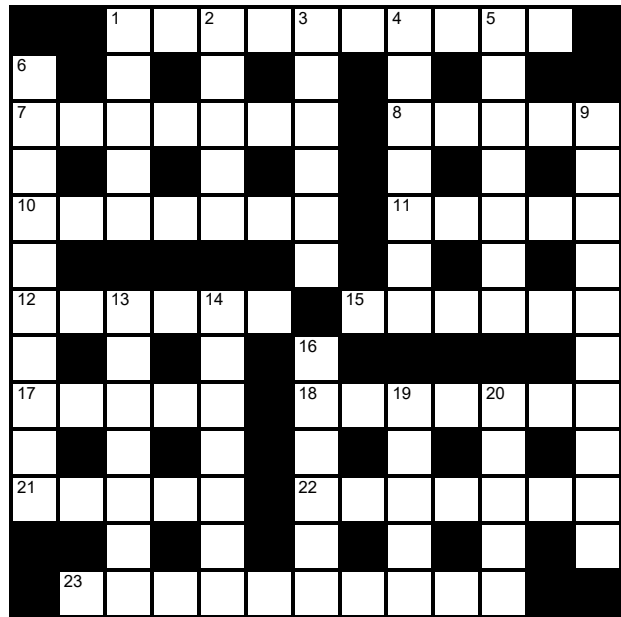
A B C D E F G H I J K L M N O P Q R S T U V W X Y Z

1	2	3	4	5	6	7	8	9	10	11	12	13			
14	15	16	17	O	18	19	20	R	21	22	23	L	24	25	26

Every letter in this crossword-style grid is represented by a number from 1 to 26. Each letter of the alphabet appears at least once. Use the letters already provided to work out further letters. Enter letters in the main grid and the smaller reference grid. Proper nouns are excluded.

Stuck on Codeword? To receive four random clues call 0901 293 6262 or text TIMECODE to 64343. Calls cost £1 plus your telephone company's network access charge. Texts cost £1 plus your standard network charge. For the full solution call 0905 757 0142. Calls cost £1 per minute plus your telephone company's network access charge. SP: Spoke, 0333 202 3390 (Mon-Fri, 9am-5.30pm).

times2 Crossword No 9522



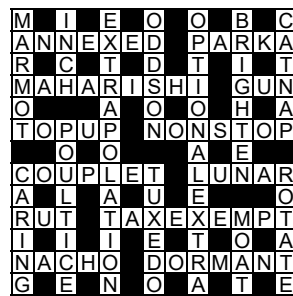
Across

- 1 One who has registered to receive a magazine, eg (10)
- 7 Kitchen tool (7)
- 8 Bury (5)
- 10 Catholic cleric's cap (I, not E) (7)
- 11 Leader of a pack of Cubs (5)
- 12 Improve the quality or value of (life, eg) (6)
- 15 Court fool (6)
- 17 Inspired by past styles (5)
- 18 Main bunch of riders in a cycle race (7)
- 21 Practical joke (5)
- 22 Imposing building (7)
- 23 Inert person's bulk; a ship's maximal mass of cargo (4,6)

Down

- 1 Derisive grin or scowl (5)
- 2 Attack on all sides (5)
- 3 Maria ---, 20th-century operatic soprano (6)
- 4 Mimic (7)
- 5 Ask earnestly, implore (7)
- 6 Packaging material (6,4)
- 9 Organised differently (10)
- 13 Relentless contest to get ahead in life (3,4)
- 14 Bent out of shape (7)
- 16 Geometric solid (6)
- 19 In a supine or prostrate position (5)
- 20 Surprising plot development (5)

Solution to Crossword 9521



Need help with today's puzzle? Call 0905 757 0143 to check the answers. Calls cost £1 per minute plus your telephone company's network access charge. SP: Spoke, 0333 202 3390 (Mon-Fri 9am-5.30pm).

Mindset by 700

1. Solve the wordsearch. Who is hiding?

Y A M D W
 O A R I T
 U H T V A
 B H D E R
 E C R O F

2. Trying to leave a desert, a translator went right 1 (R1), down 1 (D1), left 2 (L2), up 2 (U2), right 3 (R3), and down 3 (D3). What shortcut did their navigator friend take?

3. Who might be: BELT PALE KNOW BELT ?

Literary Quiz

The Times Literary Desk

New York, New York

Name the authors of these quintessentially Manhattan novels

- 1. Another Country, 1962
- 2. Rosemary's Baby, 1967
- 3. The New York Trilogy, 1987
- 4. Jazz, 1992

The Listener Crossword No 4814 **Business Tax Service** by Puffin

Senders of the first three correct entries drawn will receive *Brewer's Dictionary of Phrase and Fable* or may choose from a selection of other books (see below). Send your entry with contact details completed to: Listener Crossword 4814, 63 Green Lane, St Albans, Hertfordshire AL3 6HE, to arrive by May 16.

Prize options and more at listenercrossword.com

More information about Chambers books can be found at chambers.co.uk

1	2	3	4	5		6	7		8		9	10
11						12						
13						14		15				
16					17					18		
	19			20		21						
22			23									
24			25			26						
			27			28			29		30	
31							32		33			
					34		35	36			37	
38							39					
40							41					
42							43					

Name.....

Address.....

Postcode..... Phone/email.....

In every clue a word must be removed to enable solving. These words' first letters spell out the surnames, in order, of similar characters from a dramatic series. Highlight the surnames of three of their adversaries (each in a straight line, 21 cells in all) and also trace a line with left-right symmetry through seven cells, to represent the senior adversary's favourite two-word term for the characters. *The Chambers Dictionary* (2016) is the primary reference.

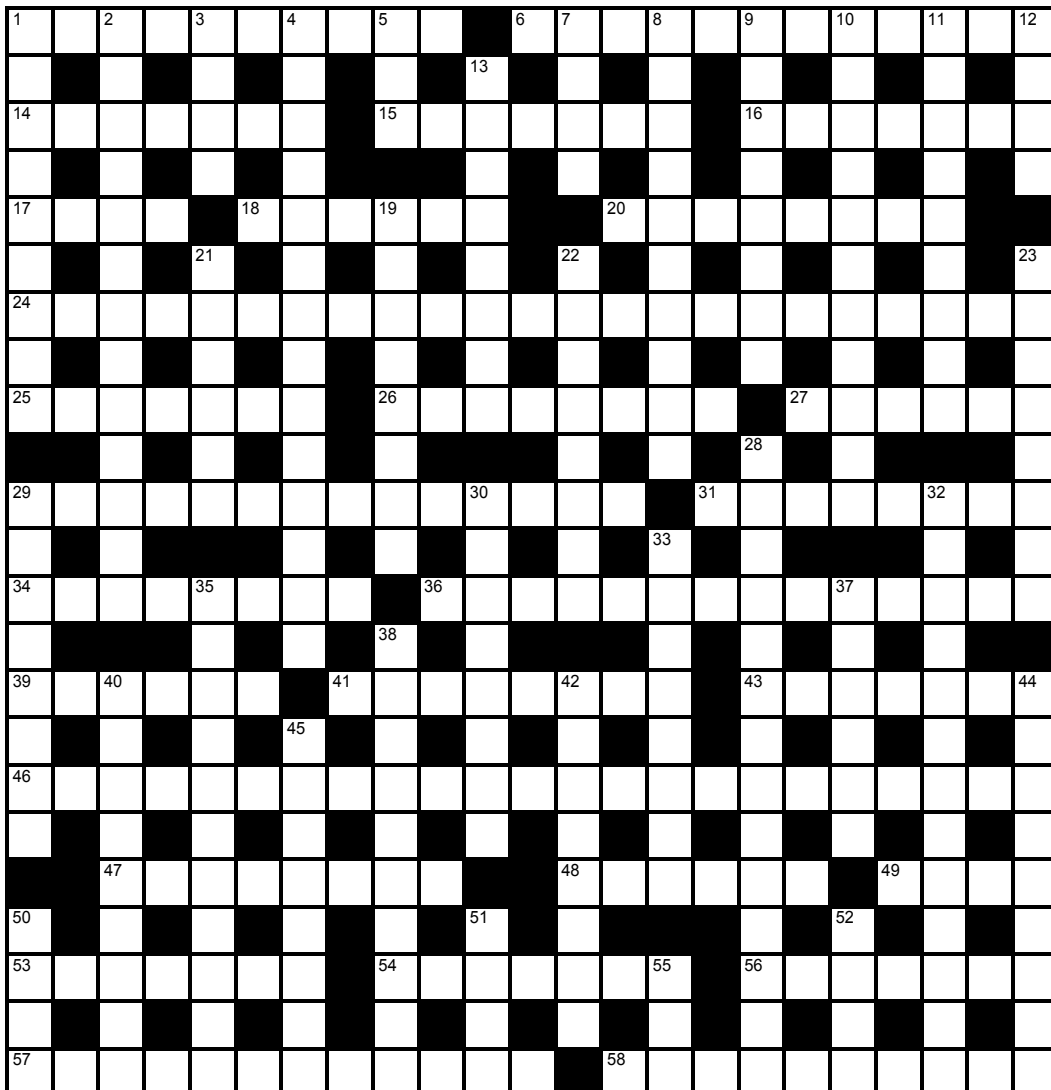
Across

- 1 Admiral guided fool's promotion targets (6)
- 7 To-do affects list shown by Häagen-Dazs (6)
- 11 Ornate border trims clear floor blocks (6)
- 12 Master single cycling English medleys (7)
- 13 Ladies score endless American byes (6)
- 14 Dutiful son of European fellow screwed up singular events (7)
- 16 Lyrically wooden dancer's poor entrechat (6)
- 19 Non-com such as prince never retreats (5)
- 21 Singers thinking church parts more select (7)
- 22 Will's bear ends Antigonus offstage, not initially (3)
- 23 Mushroom hues dressed some NBA stars (7)
- 24 Son cooks soup maigre, curried with seeds contained (13)
- 27 Obscene speakers mock lads opting out (7)
- 29 Hastens to hide ten special signs of doubt (3)
- 31 Fast war fleet delaying a navy troopship (7)
- 32 Writer angry about bear left in pit (5)
- 35 Unknown examiner loses natural right to be a French girl (6)
- 38 King Henry translated dual aged tongues (7)
- 39 More users like trees or dock round home (6)
- 40 One cannot have noticed prickle (7)
- 41 Thunder traps Poles in Glasgow (6)
- 42 Latitude darkens parts of Scotland (6)
- 43 Old Chinese stocks are no good to upper class in case of early closure (6)

Down

- 1 Parisian ruffian's father yells in pain (6)
- 2 Faulty start to exploring cause for swell (4)
- 3 I'm often playing with grandma's Indian drums (10)
- 4 Dismay for Edmund — half running repairs oddly deficient (5)
- 5 Slight breaking of laws to north, not east (4)
- 6 Pet dog's lead turns to exact short metre (6)
- 7 Vulgar tramps are not popular at shelters (4)
- 8 Pride caught thieves, Isaiah among them (7)
- 9 Fed up law decrees: use old deviation (9)
- 10 Early ale clearances: so begins bar time (7)
- 15 Pierre's silly, spoiling Valérie's ride out (7)
- 17 Local Tom'll like these new Irish records (4)
- 18 Reckoning half acre to matter in *Grand Designs* (10)
- 19 Stuff in varnish soils smooth area in bend (9)
- 20 Sadly log outré idea like Flattened Earth? (7)
- 24 Riotous roar in Oz for New-Age dawns (7)
- 25 Easily angered, Inland Revenue bill peacekeepers and dead bankrupts (7)
- 26 NY railroad: urban one's covered in trees (4)
- 28 College fellow supports clever article about SA mountains (6)
- 30 Kikuyu spread no more special language (6)
- 33 Entering square, 50 counter revolutionary (5)
- 34 Heavy knives cut line 42 twice over (4)
- 36 Puffin aboard Tube reviewed a long life (4)
- 37 A quite shrewd guide displays SA lizard (4)

Jumbo crossword No 1671



Prizes

The prize for each of the first correct solutions to the Cryptic and times2 Jumbo clues to be opened will be a collection of Times reference books – including *The Times Reference Atlas of the World*, *Collins English Dictionary & Thesaurus*, and *Bradford's Crossword Solver's Dictionary* published by HarperCollins. Entries should be marked "Cryptic" or "times2" and sent to: The Times Jumbo Crossword 1671, PO Box 2164, Colchester, Essex CO2 8LJ, or emailed to: jumbo@thetimes.co.uk, with "Cryptic 1671" or "times2 1671" in the subject line, to arrive by May 16. Open to 18+, UK & ROI residents only. The winners and the solutions will be published on May 18.

Name.....

Address.....

..... Postcode.....

Phone number.....

Across

- 1 Assess again or differently (2-8)
- 6 Californian city (3,9)
- 14 Chilli powder (7)
- 15 Telling a lie under oath (7)
- 16 Treater of teeth and gums (7)
- 17 Prepare for publication (4)
- 18 Go without food (6)
- 20 Area of a town or country (8)
- 24 Device that can drive an aircraft (14,9)
- 25 Region in a transistor (7)
- 26 Thin wire or thread (8)
- 27 Scots town that gave its name to a county (6)
- 29 Having a good opinion of one's character (4-10)
- 31 Support from below (8)
- 34 Forward section of a missile (4,4)
- 36 Plant with dark-centred flowers (5-4,5)
- 39 Stay (6)
- 41 Time of longest or shortest day (8)
- 43 Designed to reduce sliding (7)
- 46 New York gallery (12,6,2,3)

- 47 Conveying an opposite meaning to a literal reading (8)
- 48 Thomas —, 16th-century English composer (6)
- 49 Drawn metal; telegram (4)
- 53 Greed (7)
- 54 Submerge in liquid (7)
- 56 Free leaflet (7)
- 57 Person with a recurring urge to steal (12)
- 58 In a deliberate and precise manner (10)

Down

- 1 Exotic or obscure (9)
- 2 Greek abode of the blessed dead (7,6)
- 3 Pimplly condition (4)
- 4 Showing no initiative (14)
- 5 Highest point; child's toy (3)
- 7 Compound used in dyeing and tanning (4)
- 8 Illegally dumping waste (3-7)
- 9 Power of hearing (8)
- 10 Thoughtful for the feelings of others (11)

- 11 Tiny trace (9)
- 12 Cereal (4)
- 13 Eastern (8)
- 19 Made officially valid (8)
- 21 Public speaker (6)
- 22 Aid to memory (8)
- 23 (Of a horse) accustomed to being ridden (6,2)
- 28 Living on less food than is healthy (14)
- 29 Characteristic group of symptoms (8)
- 30 Magical charm (8)
- 32 Lacking courage or determination (13)
- 33 Change to an opposite direction (8)
- 35 Treater of feet (11)
- 37 Elder; first (6)
- 38 Act of being put forward as a candidate (10)
- 40 Convert from, eg, imperial units (9)
- 42 Not grown up (8)
- 44 Calmly and tolerantly (9)
- 45 Large theatre or stadium (8)
- 50 Perambulate (4)
- 51 Novel by Jane Austen (4)
- 52 Reverse the effects of (4)
- 55 Consume (3)

Bridge Andrew Robson

Most Powerful Hand of the Year must surely go to South on this week's deal from Reading Bridge Club and Loddon Vale members playing in an online Realbridge pairs. Wow — thank you to Mark Richardson for the details.

Dealer North Neither Vul

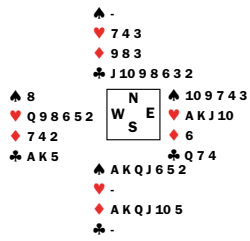


Table One

S W N E
3♣(1) Pass
7♠(2) end(3)

- (1) Featherlight but routine by the standards of most modern experts.
- (2) As, frankly, who would not.
- (3) Should East double? Not because of the top hearts — surely South is void — but because of the nasty surprise in spades.

"I've got less than nothing for you," said North as he tabled his paltry collection.

"Don't worry," thought declarer inwardly.

However, worrying was in order as spades split 5-1. The 84 per cent grand slam was wrecked.

"Perhaps I should have doubled," said East. Yes, after all he would not have minded a run-out to 7NT. Defeating 7♠ undoubled was an exact average; defeating it doubled was a near-top for E-W.

Table Two

S W N E
Pass 1♠(1)
7♦(2) end

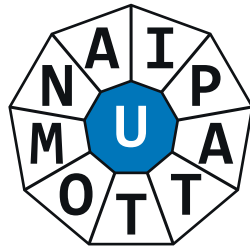
- (1) East would soon regret his slender opener. And, in truth, opening light in second hand, especially on a suit you don't want led, is not to be recommended.
- (2) Warned off 7♠ (likely 5-1 spade split), South tried a grand slam in his other suit. After all, if partner is very short in spades, he is likely to have a few diamonds.

Jackpot. The brilliant 7♦ bid by South, Litany Chompers, netted 1,440. Declarer made it by ruffing a spade in dummy. Unsurprisingly, this was the N-S top.

Two other entries on the traveller are worthy of note. One was 7♥ doubled by E-W, down only two and N-S +300. This is the literal par on the deal — E-W saving over 7♦ (or 6♠). The cheap save deserved to score a near-top for E-W but, because most N-Ss were going down in 7♠ (perhaps doubled), it scored well below average.

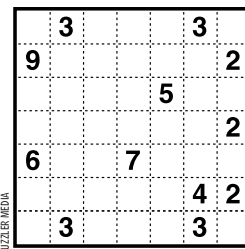
The other score of interest was 2♠ plus four — N-S +230. Fancy picking up the hand of a lifetime and stewing in 2♠. Although South scored about 70 per cent for his pains, I doubt he managed to hold back his disappointment at being left there. Perhaps the (uncontested) bidding proceeded Pass-2♣-2♦-2♠, North passing South's (forcing) bid.

Polygon Roger Phillips



Using the given letters no more than once, make as many words as possible of four or more letters, always including the central letter. Capitalised words, plurals, conjugated verbs (past tense etc), adverbs ending in LY, comparatives and superlatives are disallowed.
How you rate: 16 words average; 22, good; 30, very good; 38, excellent.

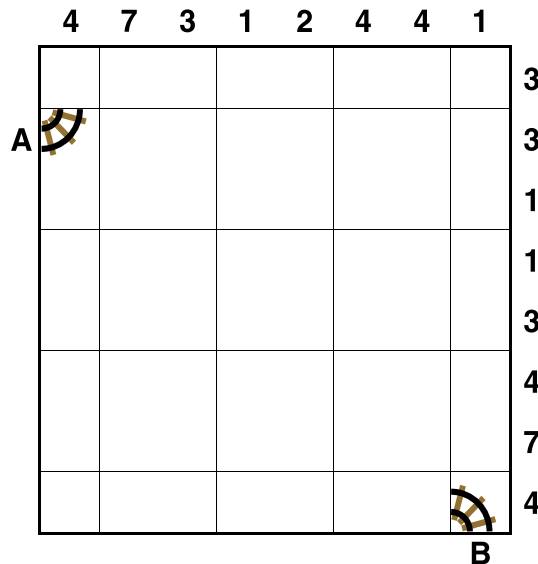
Cell Blocks 5089



Divide the grid into square or rectangular blocks, each containing one digit only. Every block must contain the number of cells indicated by the digit inside it.

Train Tracks
No 2236

Lay tracks to enable the train to travel from village A to village B. The numbers indicate how many sections of track go in each row and column. There are only straight sections and curved sections. The track cannot cross itself.
Solution on Monday



Solutions

Solution to last week's Samurai Sudoku

7	4	8	6	3	5	9	1	2	5	4	2	3	7	8	9	6	1
6	3	2	1	7	9	5	8	4	7	1	9	5	2	6	4	8	3
9	1	5	4	2	8	7	6	3	6	8	3	9	4	1	7	5	2
5	7	4	3	9	1	6	2	8	3	7	4	6	1	2	5	9	8
3	8	9	2	6	4	1	5	7	1	2	8	4	9	5	3	7	6
1	2	6	8	5	7	3	4	9	9	6	5	7	8	3	2	1	4
4	6	1	7	8	3	2	9	5	7	8	6	4	3	1	8	5	9
2	5	3	9	4	6	8	7	1	4	9	3	2	5	6	1	3	7
8	9	7	5	1	2	4	3	6	5	1	2	8	9	7	2	6	4
						9	8	4	2	7	5	1	6	3			
						5	6	2	1	3	8	7	4	9			
						3	1	7	9	6	4	5	2	8			
6	3	1	4	2	9	7	5	8	3	2	9	6	1	4	3	9	2
4	7	8	3	1	5	6	2	9	8	4	1	3	7	5	1	8	4
9	2	5	8	6	7	1	4	3	6	5	7	9	8	2	7	6	5
1	9	7	5	3	4	2	8	6				1	3	9	8	2	6
5	8	3	6	9	2	4	1	7				2	4	8	5	3	7
2	4	6	1	7	8	9	3	5				7	5	6	9	4	1
8	6	4	9	5	1	3	7	2				4	6	1	2	7	8
3	1	2	7	8	6	5	9	4				5	9	7	4	1	3
7	5	9	2	4	3	8	6	1				8	2	3	6	5	9

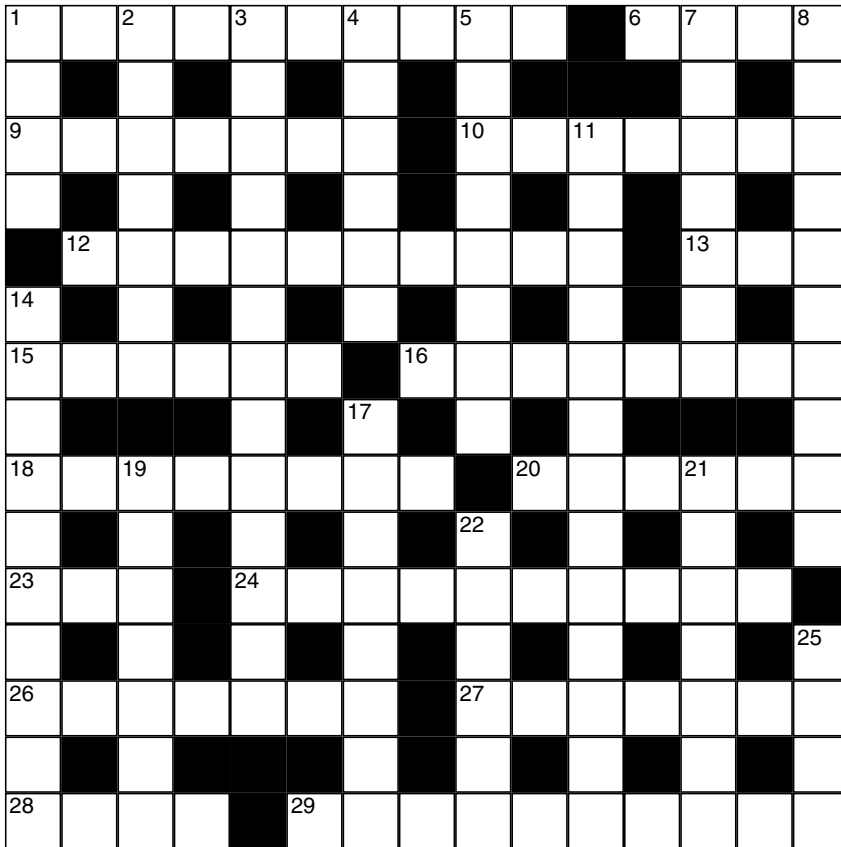
Our five-grid Sudoku will test your powers of logic and deduction.

Fill each grid so that every column, every row and every 3x3 box contains the digits 1 to 9. Where the puzzles overlap, the rows and columns do not go beyond their usual length. The interlocking nature of the grid gives you more clues — and more complexity.

Remember — don't try to solve each Sudoku grid in turn; the puzzle has to be tackled as a whole.

Stuck? Call 0901 293 6263 to receive four clues for today's Samurai Sudoku. Calls cost £1 plus your telephone company's network access charge. SP: Spoke, 0333 202 3390 (Mon-Fri 9am-5.30pm)

Times Crossword No 28,908



Across

- 1 Twisted frames corroded, left in a pitiful way (10)
- 6 Do some work in zoo — left tips (4)
- 9 You are initially baffled by fresh alarm (7)
- 10 Very loud on my watch, becoming calm (4,3)
- 12 Most ostentatious, hosting a party — or quite the opposite? (10)
- 13 Survivor shrugging off case of Catholic priest (3)
- 15 Two-hour passage opens legend etc of prophet (6)
- 16 Very small females dancing (8)
- 18 Note makers of shelter across lake put in pair separated by pond (8)
- 20 Scoop from barge last of coal (6)
- 23 Shrink perhaps from something false, retreating (3)
- 24 Become ally of Kuwait with the power to corrupt (4,2,4)

- 26 Broadcast returns with two German couples in resort area (7)
- 27 As masochist is perhaps speaking, gas produced! (7)
- 28 At the right time of the month, changing leader (4)
- 29 Names on envelopes potentially also put on notes and notices (10)

Down

- 1 Did keen team of ours put on training? (4)
- 2 After chopping, tree had connected with the ground (7)
- 3 Sudden switching of power on without gas hit production (4,2,7)
- 4 Army crooks? (6)
- 5 Was servant shortage observed? (8)
- 7 Invitation possibly to academy to pursue one place for launches (7)
- 8 Director raised cap before shoot, then turned evil! (10)
- 11 Unwelcome sign in golf store, keeping article in safe (3,2,3,5)
- 14 Ought to echo very left-wing bore (10)
- 17 Cards to give worker on board (8)
- 19 Impolite to give Latin numbers to country group! (7)
- 21 Corrupt jockey keeps at it, somehow (7)
- 22 Woolly judge quietly interrupting sounds indecisive (6)
- 25 Somewhere to eat a dog's dinner (4)

Solution No 28,907

T	O	A	S	T	Y	E	D	U	C	A	T	E	D
A	R	H	R	O	H	A	E						
C	O	M	M	U	T	E	D	I	A	G	R	A	M
I	I	G	G	D	R	S	E						
T	O	S	H	P	A	L	E	S	T	R	I	N	A
T	H	L	R	R									
C	H	I	C	A	N	E	R	A	T	O			
H	C	N											
A	M	E	N	D	F	A	C	E	S	A	V	E	R
R	S	A	A	E	O								
M	I	S	F	O	R	T	U	N	E	S	C	A	R
L	T	M	H	T	C	A	E						
E	P	I	C	E	N	E	O	N	E	S	T	E	P
S	L	S	A	N	L	O	L						
S	O	L	I	T	U	D	E	F	L	U	R	R	Y