

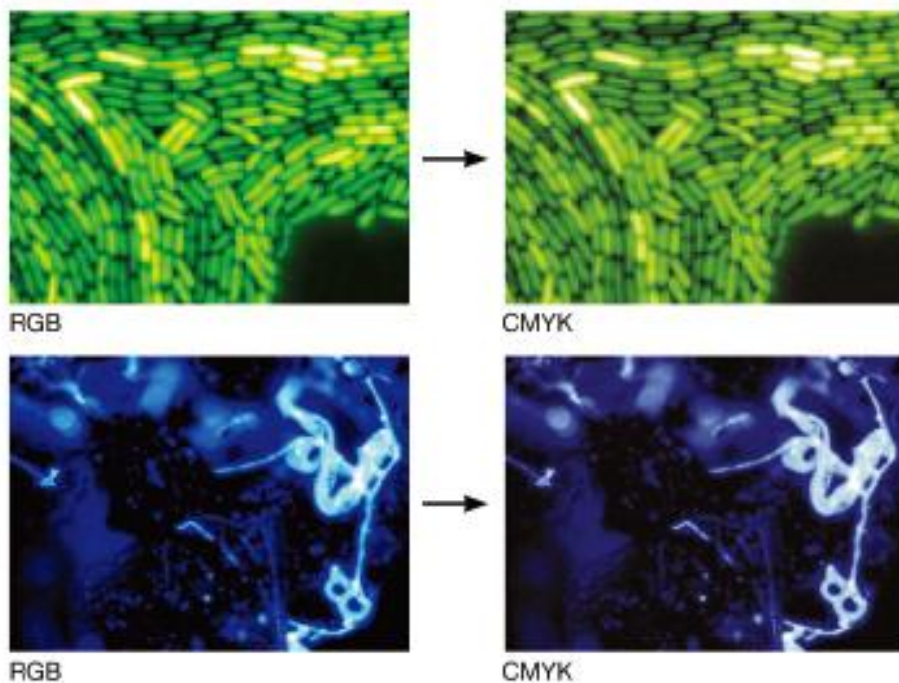
## Guidance for *AJA* figures preparation

Dear *AJA* authors,

After your manuscript is accepted by *AJA*, it is your high priority and important task to provide the high quality publishable figures. This guidance will help you to revise and modify your figures, make sure the article could be processed smoothly and quickly, and make sure that the final print of your article is with good quality.

### Colorful pictures

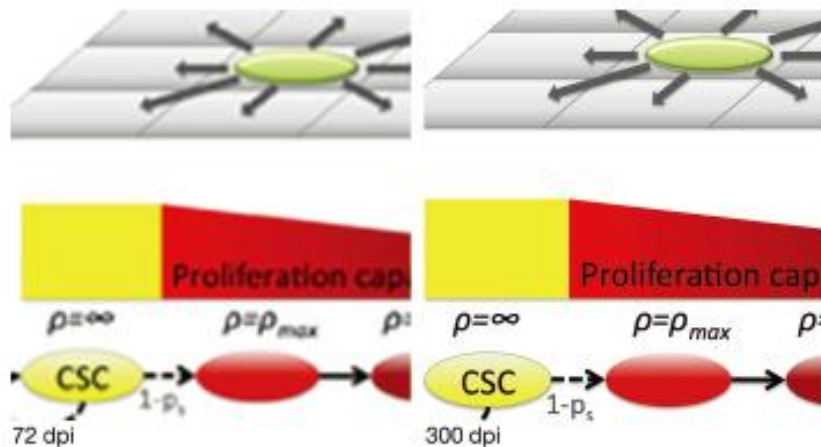
1. For the printing purpose, RGB mode needs to be transformed into the CMYK colorful mode. Please note that this change could decrease the vitality of the color, and make the trivial detail lack of the transparency. Please verify that you are satisfied with the transformed figures.
2. The following example display the same figure from the RGB mode to the CMYK mode, please note that there is loss of trivial detail during the transformation.



### Resolution

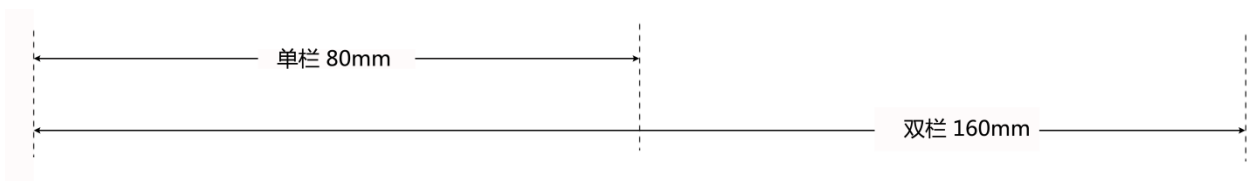
1. The resolution for all the figures should be 300dpi, otherwise they are not

- usable. Grayscale pictures (imprinting map, black and white drawings), at least 600 dpi. Line graphs, bar charts and illustration, at least 1000 dpi;
2. During the figure processing, it is impossible manually to increase the resolution of the figures;
  3. The following example displays the difference of the same figure of lower resolution and 300dpi.



### Figure size

Please provide the figures which are comparable as the actual printing sample. *AJA* requirements: 80mm (single column) or 160mm (double column).



### Line thickness

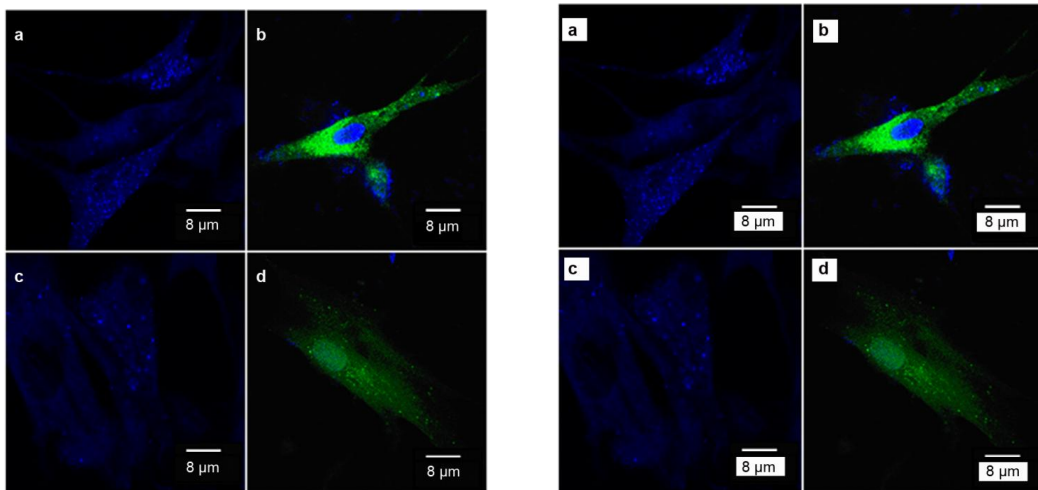
1. All the lines should be 1px or 2px;
2. Please do not change these lines

### Words

1. After the figure size is set (80mm for single column, 160mm for double column),

the words in the figures should be between 5-8pt;

2. Please label the lower case **a, b, c, d (in bold)**, for all the small panels of figures. For each figure, it is in Arial font, weight about 8pt, in bold and regular font. Please check that there is no obvious background contrast between "**a, b, c, d**" and the figures.
3. The words in the figures are in Arial font (the amino acid is in Courier font). The biggest is 7pt, and the smallest is 5pt. As long as the space is enough, try to choose the 7pt.
4. Do not change the words
5. In the following example, the left figures meet *AJA* requirements, however the right figure does not meet *AJA* requirements (there is no obvious background contrast between "**a, b, c, d**" and the figures).



### The format of the words

1. For the purpose of the publication, it is best to generate the TIFF and EPS files using the Photoshop or Illustrator software.
2. All the tiff files using Photoshop software should be kept as individual layers. All the words, arrows and other symbols are in one independent layer. (JPG files does not have individual layers, thus we do not recommend it).
3. We accept the ADOBE PDF file (please set it as the "print" or "publish

output" format), PowerPoint file, Word and Excel file. But all the pictures and elements should be editable (in another word, all the elements should be "not combined" ). Please also note these software only allow to generate the RGB color mode (not suitable for publishing). However, it is unpredictable to change from the RGB mode to the CMYK color mode, which is recommended by *AJA*.

4. For the photographs, they should be at least processed by the Adobe Photoshop 6. If the photograph has several layers, please save these layers as the PSD format. If there is no layer, please save it as the TIFF format. The lowest resolution is 300 dpi.
5. For the micrographs, in order to prevent the loss of the accurate scale during the submission, revision and printing, please draw with the scale bar after carefully transforming the amplification.
6. For the line graphs, charts, histograms and scatter diagrams, it is best to submit the format of Excel.
7. Please do not output the JPEG format from any SPSS/PASW statistical software. Because this output is automatically restricted to 96 dpi.

### **Chart**

1. Please submit the table in the WORD file or EXCEL file. Please avoid firstly changing the table to the figure and then transforming into the WORD file.
2. Please make sure the MS Office 2007 files to be 97-2003 version Office software.

### **Key reminders**

1. Colorful figures, at least 300 dpi; please change all the colorful figures into the CMYK mode; for the Grayscale pictures, imprinting map, black and white drawings, at least 600 dpi; Line graphs, bar charts and illustration, at least 1000 dpi;
2. For the figure which has multiple panels, please use the lower case a, b and c. Please use the Arial and regular font, in bold, 8pt. Please avoid to have the

obvious contrast between "a, b, c" and the figures.

3. Please avoid to mark on the shaded area or the texture area
4. Please submit the figures which have multiple layers
5. Please provide the scale bar for the micrographs.