

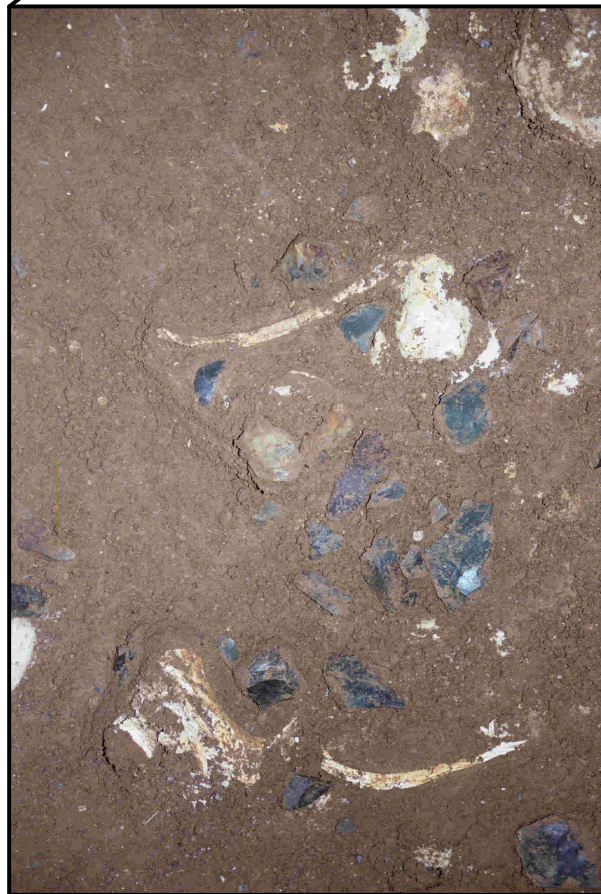
**Supplementary Figure A6.** Plan of Liang Bua showing the distribution of excavated sectors.



**Supplementary Figure A7.** General view of Liang Bua from the rear looking north. The open Sector VII/XI trench is located along the east wall of the cave on the lower right hand side. (Photo: M. J. Morwood).



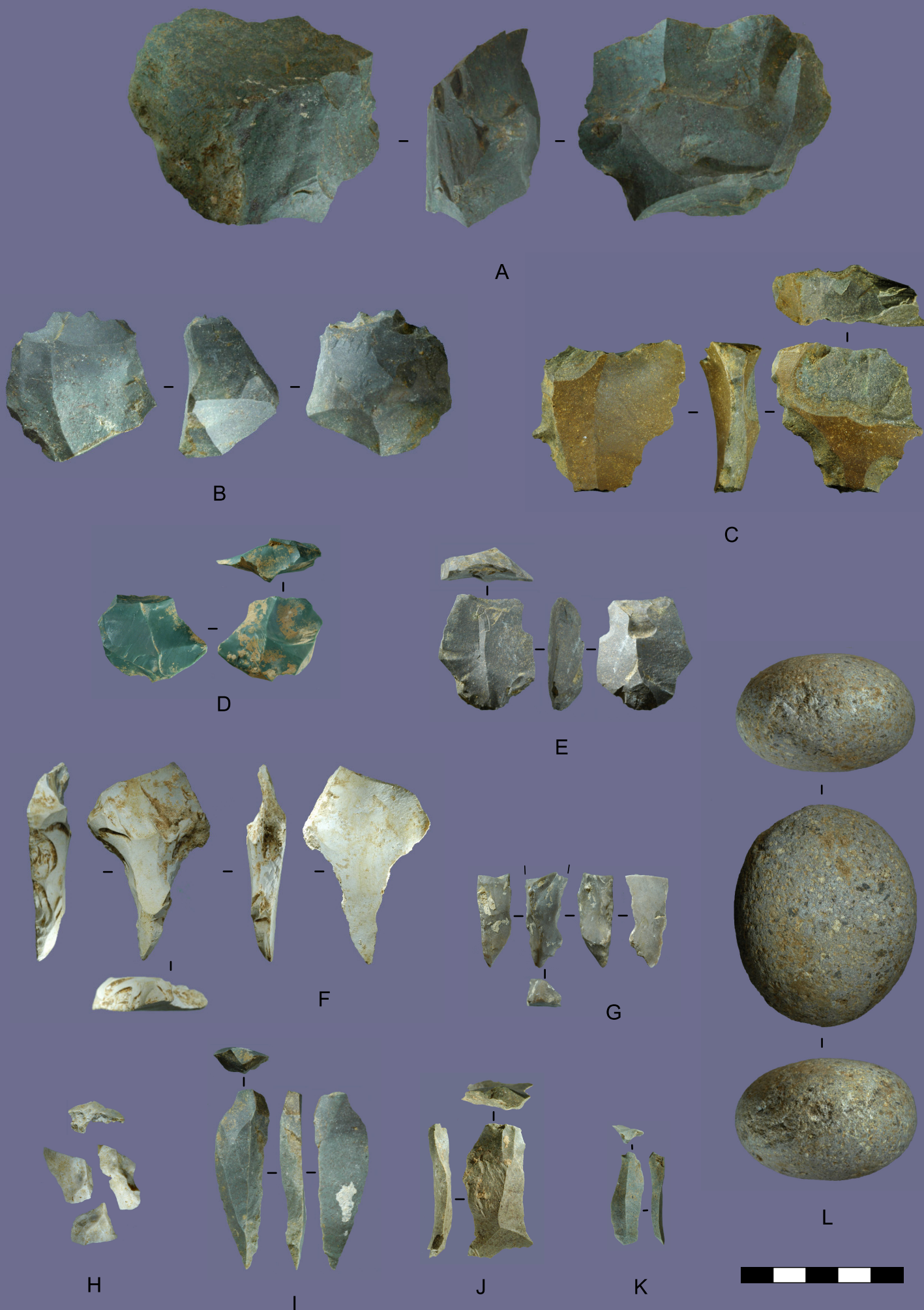
**Supplementary Figure A8.** General view of Sectors VII (bottom) and XI (top) during the 2004 excavation. (Photo: M. J. Morwood).



**Supplementary Figure A9.** Spit 48, Sector XI, during the 2004 excavation. Two juvenile *Stegodon* mandibles are indicated by arrows. The detail image shows the density of stone artefacts. (Photos: M. J. Morwood).



**Supplementary Figure A10.** Juvenile *Stegodon* jaw with associated stone artefacts, Sector XI, Liang Bua (Photo: Gert van den Bergh).



**Supplementary Figure A11.** Stone artefacts found in the Pleistocene deposits of Liang Bua. (A-D) Radial cores. (E) Bipolar core. (F-G) Perforators. (H) Burned chert fragments. (I-K) Blades. (L) Hammerstone. Scale 50 mm. (Photos: M. W. Moore).



**Figure A12.** 'White' tuffaceous silts in the northwest corner of Sector VII. These were deposited about 12-11 kyr BP. The remains of *Homo floresiensis* and *Stegodon* occur to the base of these silts, but are absent from overlying layers, which are characterised by the remains of extant fauna and modern humans. (Photo: M. J. Morwood).