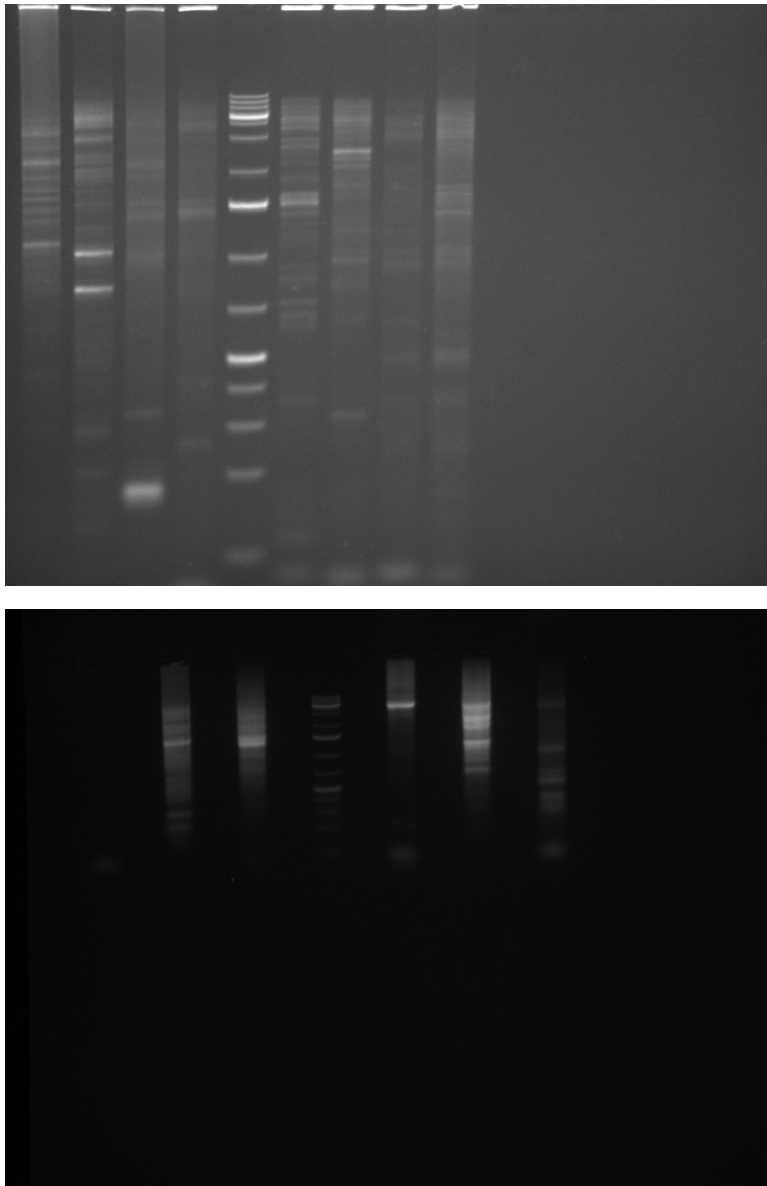


Supplementary information

Multiple wheat genomes reveal global variation in modern breeding

In the format provided by the authors and unedited



Supplementary Figure 1 | Original gel source data used for spanning the breakpoint for the 7B/5B translocation. Images were cropped and used in the construction of Extended Data Figure 9. A DNA ladder is included in the middle of each image for approximating the size of the amplicons.