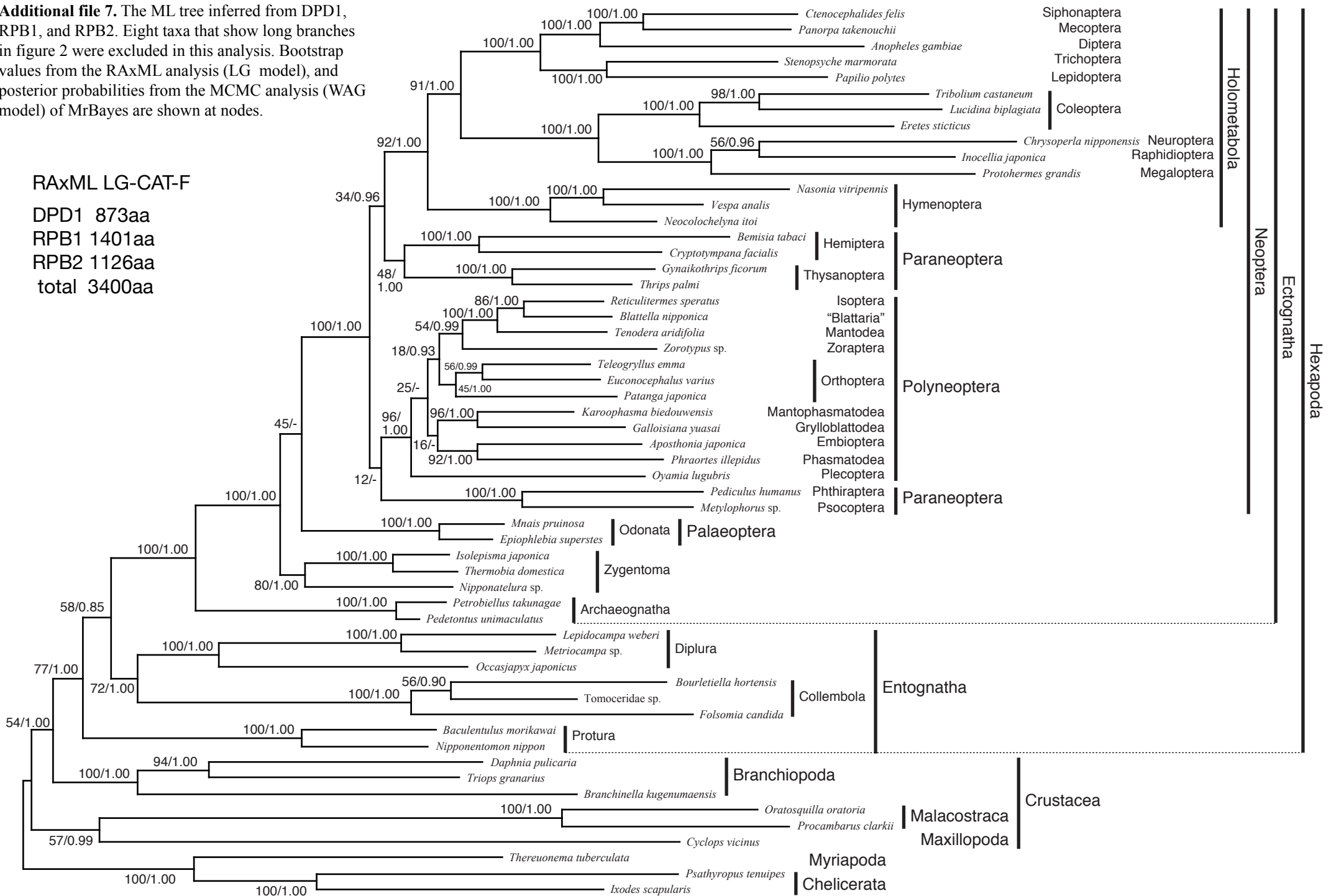


Additional file 7. The ML tree inferred from DPD1, RPB1, and RPB2. Eight taxa that show long branches in figure 2 were excluded in this analysis. Bootstrap values from the RAxML analysis (LG model), and posterior probabilities from the MCMC analysis (WAG model) of MrBayes are shown at nodes.

RAxML LG-CAT-F

DPD1 873aa
 RPB1 1401aa
 RPB2 1126aa
 total 3400aa



0.05