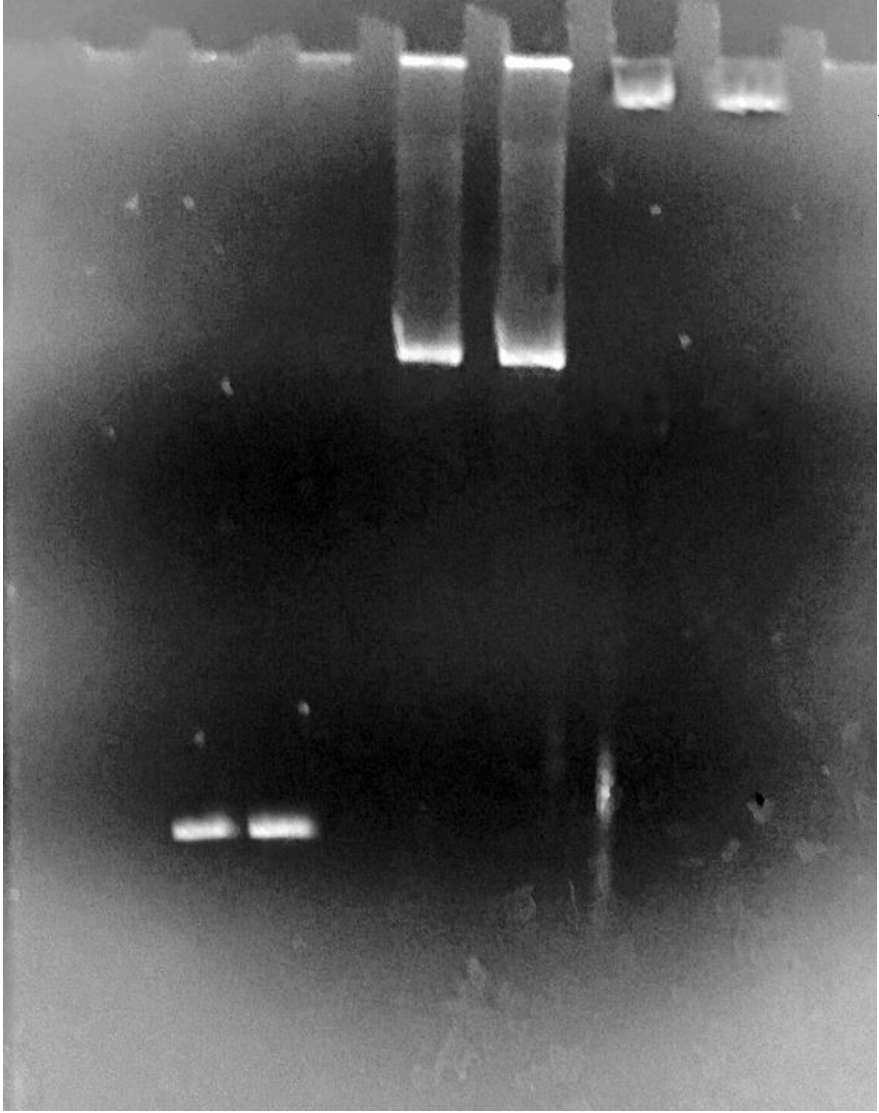


Supplementary Figure S3

Modern Human (MH)
Archaic Hominin (AH)
MH+SOX2
AH+SOX2
MH+SOX2+Ab
AH+SOX2+Ab



← Super shifted bands

← Shifted bands

← Free probs

Full-size image of EMSA/Gel shift assay

Electrophoretic mobility shift assay shows shift in the mobility of SOX2 protein-DNA complexes as compared to the free probes Modern Human (MH) and Archaic Hominin (AH). Ab indicates Antibody. This image is full-size, uncropped version of Figure 1C.