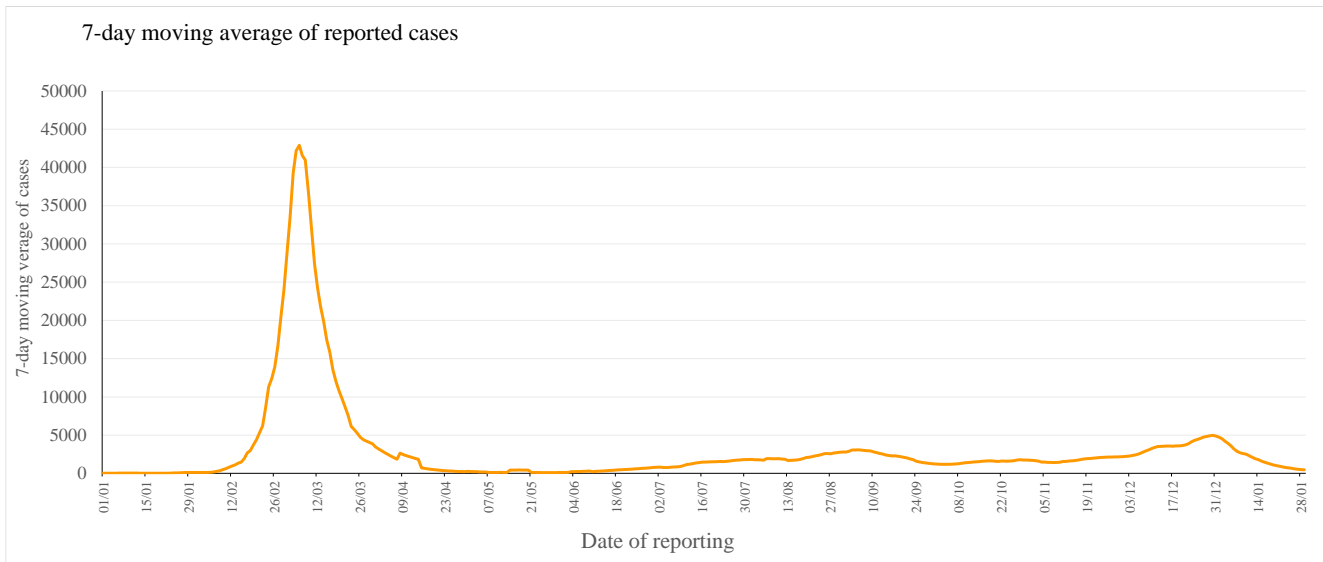


Situation of COVID-19 (23 January 2020 to 29 January 2023)

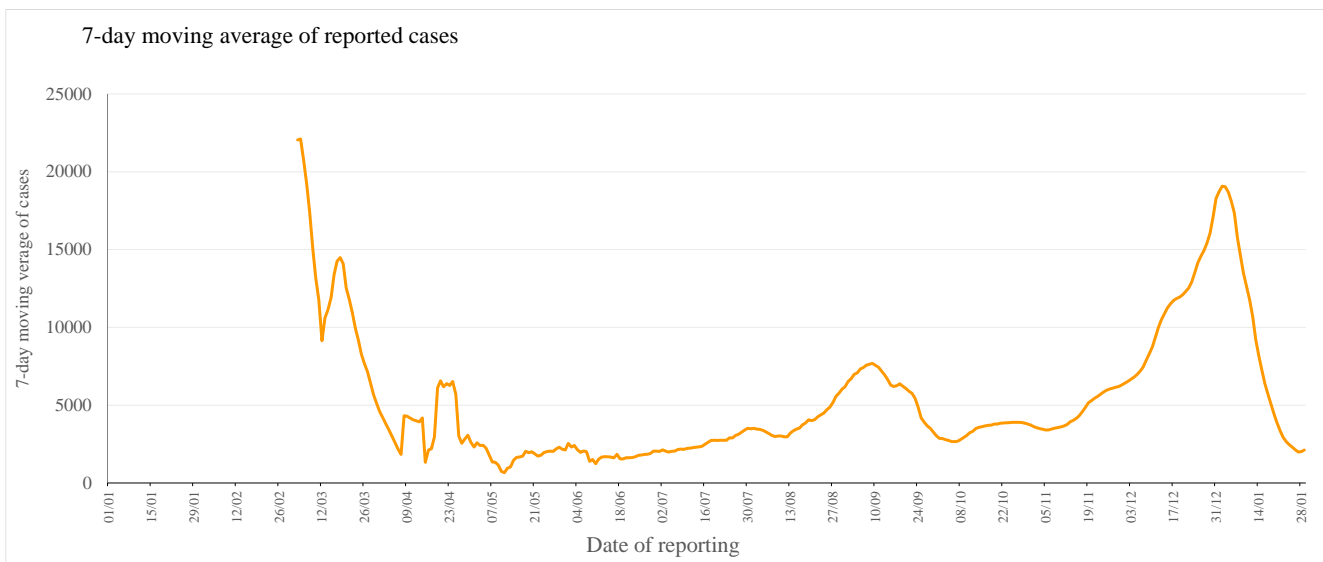
The Centre for Health Protection (CHP) of the Department of Health (DH) has updated the epidemic situation of COVID-19 (up to 29 January 2023). Between 23 January 2020 and 29 January 2023, Hong Kong has recorded a total of 1226467 and 1880112 cases tested positive by nucleic acid tests and RATs respectively for the SARS-CoV-2 virus.

Figure 1(i): 7-day moving average of cases tested positive for SARS-CoV-2 virus by nucleic acid tests since 2022



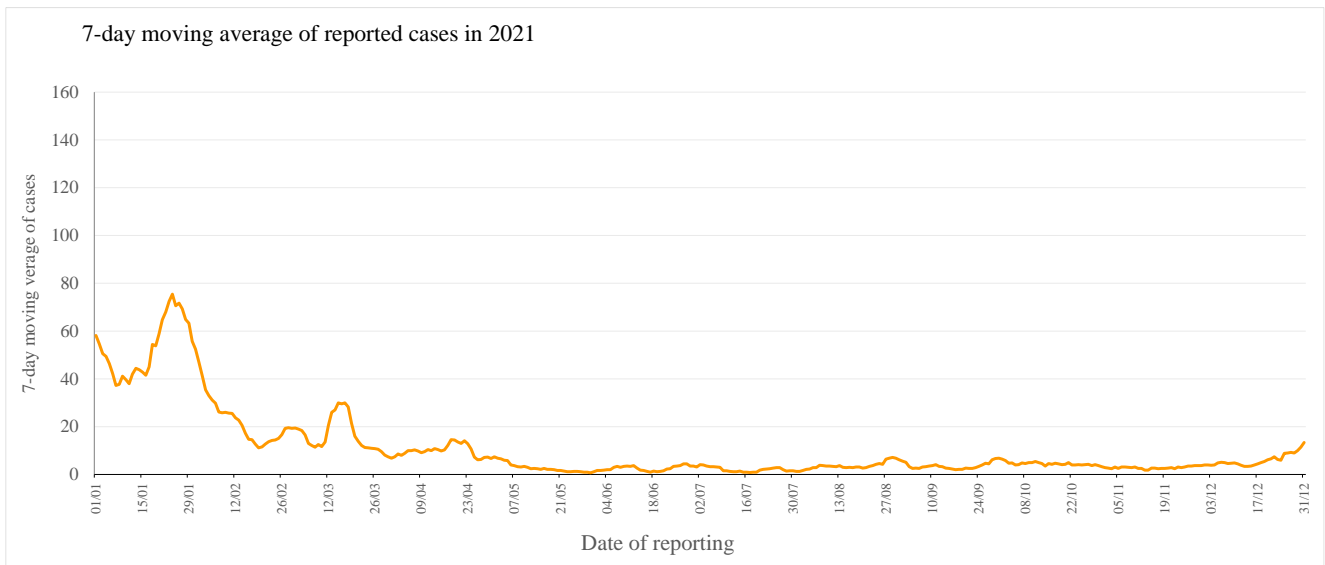
Note: Re-positive cases are excluded in Figure 1(i).

Figure 1(ii): 7-day moving average of cases tested positive for SARS-CoV-2 virus by rapid antigen tests since 2022



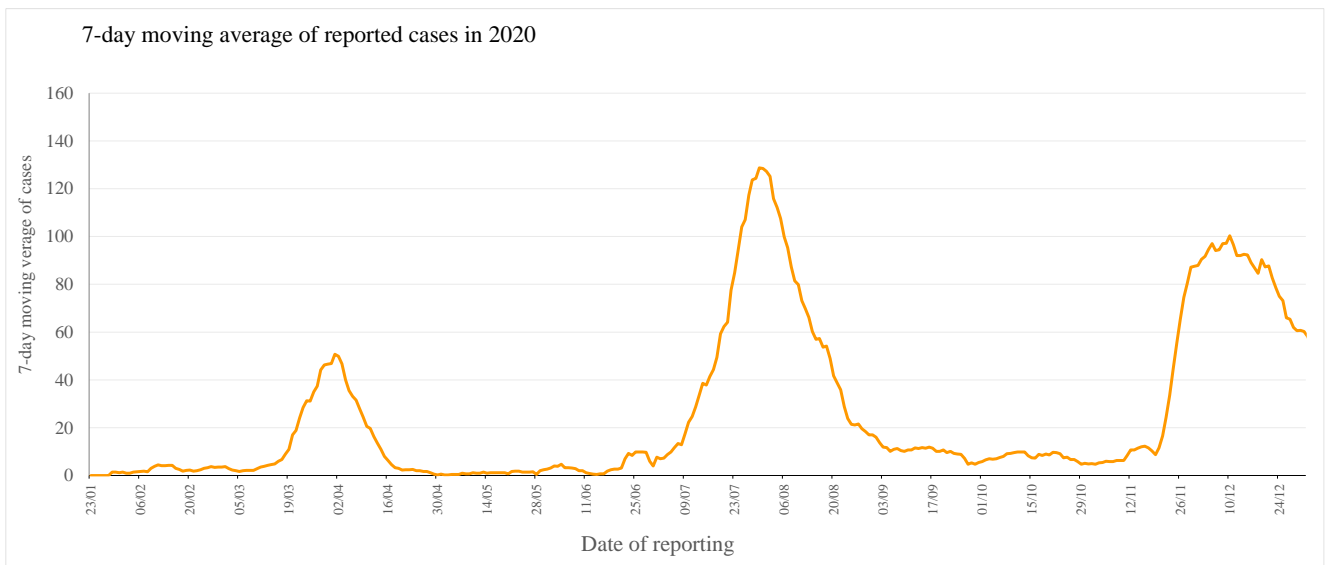
Note: Re-positive cases are excluded in Figure 1(ii).

Figure 1(iii): 7-day moving average of cases tested positive for SARS-CoV-2 virus by nucleic acid tests in 2021



Note: Re-positive cases are excluded in Figure 1(iii).

Figure 1(iv): 7-day moving average of cases tested positive for SARS-CoV-2 virus by nucleic acid tests in 2020



Note: Re-positive cases are excluded in Figure 1(iv).

Figure 2: Epidemic curve of cases tested positive for SARS-CoV-2 virus in Hong Kong between 31 December 2021 and 29 January 2023

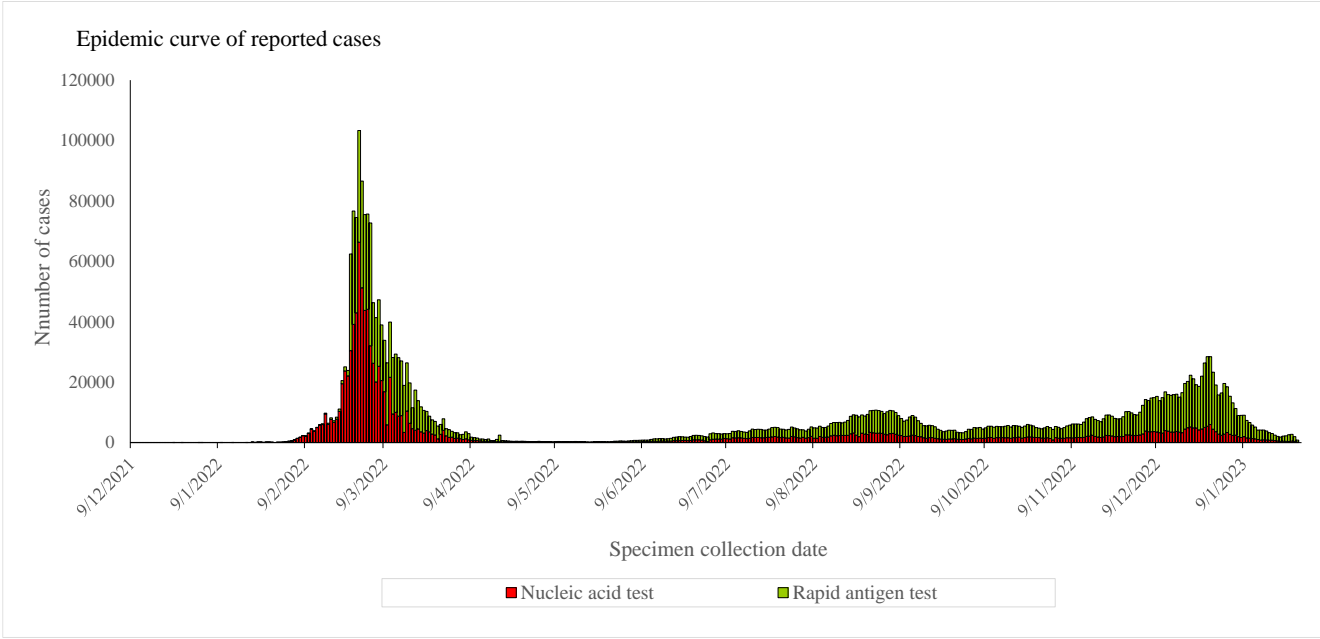


Table 1 shows the classification of cases reported since the 5th wave (since 31 December 2021) by importation status.

Table 1: Number of cases tested positive for SARS-CoV-2 virus by nucleic acid tests and rapid antigen tests by classification

Reporting period	Imported case	Locally acquired case	Period total
Since the 5th wave	81117 (2.62%)	3012831 (97.38%)	3093948 (100.00%)

Figure 3 shows the age and gender distribution of the cases between 31 December 2021 and 29 January 2023.

Figure 3(i): Age and gender distribution of cases tested positive for SARS-CoV-2 virus by nucleic acid tests in Hong Kong

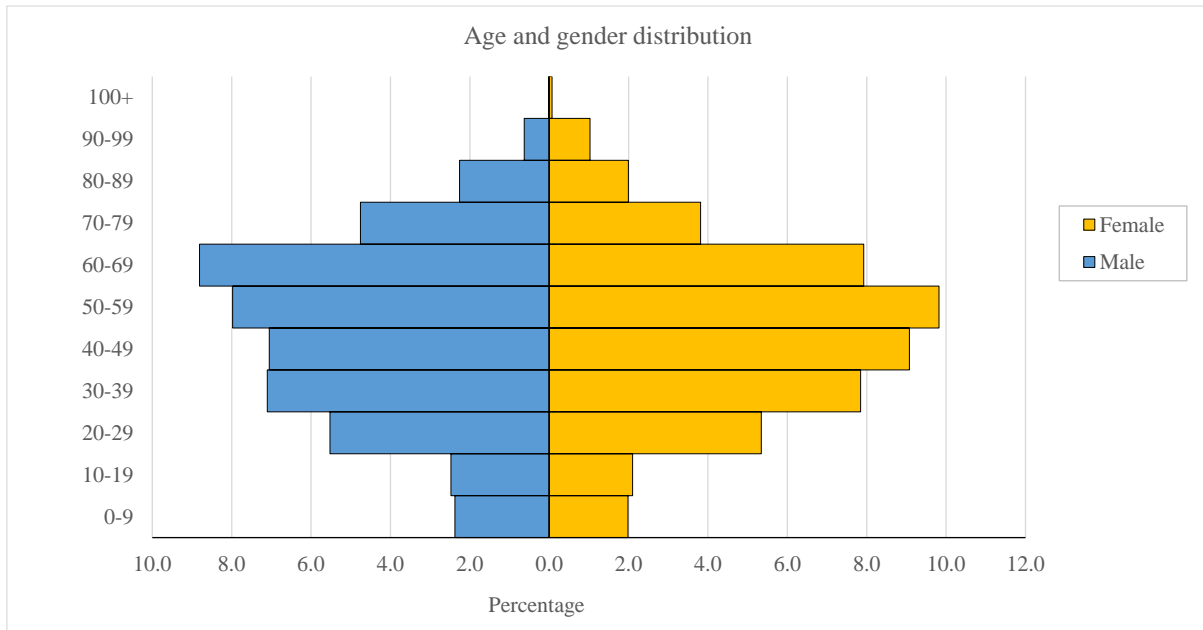
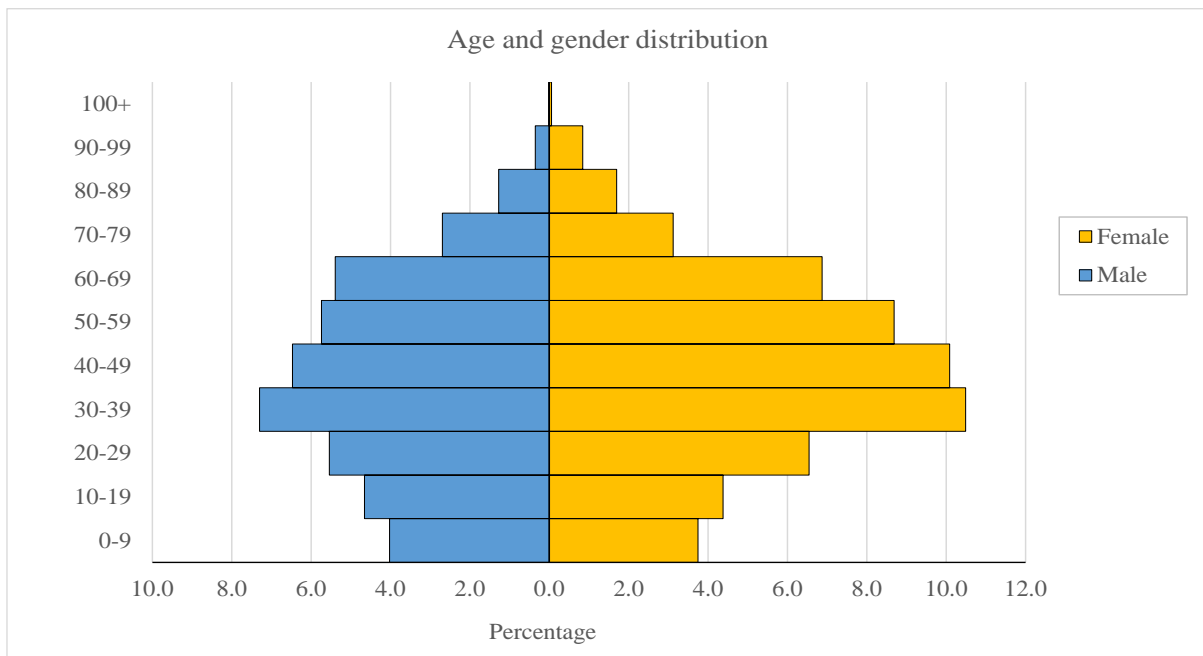
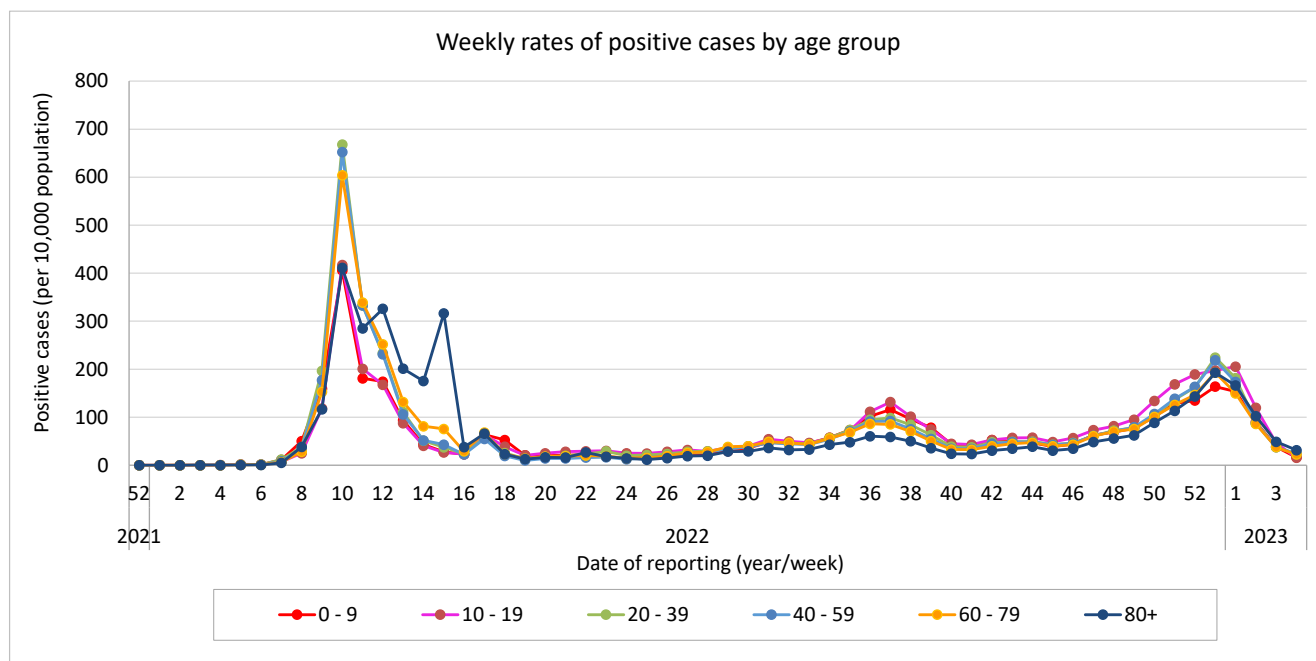


Figure 3(ii): Age and gender distribution of cases tested positive for SARS-CoV-2 virus by rapid antigen tests in Hong Kong



Source of data: Data from the Centre for Health Protection of the Department of Health with available information on age and gender.

Figure 4: Weekly rates of positive cases tested by nucleic acid tests and rapid antigen tests (by age group) between 31 December 2021 and 29 January 2023



Note: Imported cases are excluded in Figure 4.

Table 2: Incidences of cases tested positive for SARS-CoV-2 virus by nucleic acid tests and rapid antigen tests by residential districts since 2022

Region	Cumulative Incidence	District	Cumulative Incidence
Hong Kong	2758.6	Central and Western	2362.6
		Wan Chai	2152.0
		Eastern	3035.4
		Southern	2943.3
Kowloon	3258.9	Kowloon City	2914.2
		Kwun Tong	3573.8
		Sham Shui Po	3148.5
		Wong Tai Sin	3502.3
		Yau Tsim Mong	2861.0
New Territories East	3311.4	Islands	2721.4
		North	3550.2
		Sai Kung	3241.7
		Sha Tin	3433.5
		Tai Po	3263.5
New Territories West	3378.5	Kwai Tsing	3388.3
		Tsuen Wan	3196.2
		Tuen Mun	3572.0
		Yuen Long	3312.7

Note: Data in Table 2 are shown as number of cases per 10,000 population.

In 2022, the death registry of Hong Kong recorded a total of 9,291 deaths with COVID-19 being the cause of death. Among these 9,291 registered deaths, 9,287 involved local cases reported during the fifth wave, while two had date of death before 2022 and the remaining two involved imported cases.

Table 3: Number and estimated CFR of local cases reported and having death certificates issued in 2022 stratified by age group and vaccination status

Age group(s)	Number of local cases reported and having death certificates issued in 2022 (Estimated CFR)			
	All cases	History of receiving ≥ 3 doses of COVID-19 vaccine	History of receiving 1 or 2 dose(s) of COVID-19 vaccine	Unvaccinated
0-9	8 (0.00%)	0 (0.00%)	2 (0.00%)	6 (0.01%)
10-19	1 (0.00%)	0 (0.00%)	0 (0.00%)	1 (0.00%)
20-29	11 (0.00%)	0 (0.00%)	5 (0.00%)	6 (0.02%)
30-39	13 (0.00%)	1 (0.00%)	2 (0.00%)	10 (0.02%)
40-49	49 (0.01%)	3 (0.00%)	13 (0.01%)	33 (0.09%)
50-59	203 (0.05%)	13 (0.01%)	66 (0.04%)	124 (0.36%)
60-69	676 (0.17%)	37 (0.02%)	209 (0.14%)	430 (0.97%)
70-79	1433 (0.74%)	100 (0.12%)	388 (0.52%)	945 (2.79%)
80+	6893 (5.01%)	419 (1.01%)	1559 (3.40%)	4915 (9.79%)
Overall	9287 (0.34%)	573 (0.05%)	2244 (0.20%)	6470 (1.49%)

Source of data: Data from the Centre for Health Protection of the Department of Health with available information on vaccination status.

Remark: The estimated CFR is computed with numerator being the number of fatal cases passed away in 2022 with death certificates issued on or before December 31, 2022 having COVID-19 as the cause of death, while the denominator refers to COVID-19 tested positive cases with report date within 2022.