

236,076 cases of COVID-19*

28,603 health-care workers[§]

32,867 associated deaths

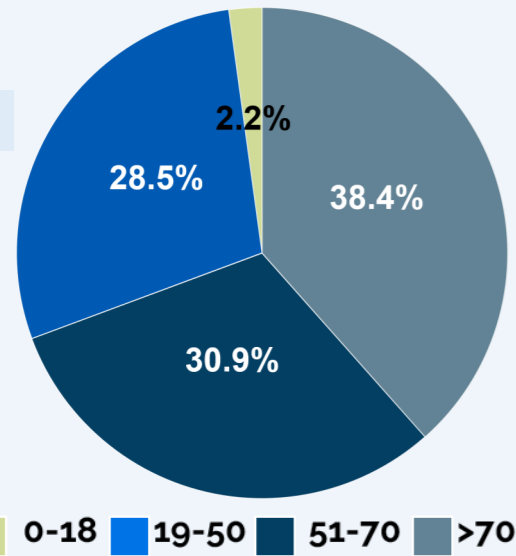
Integrated surveillance of COVID-19 in Italy

(Ordinanza n. 640 del 27/02/2020)

10 June 2020 UPDATE

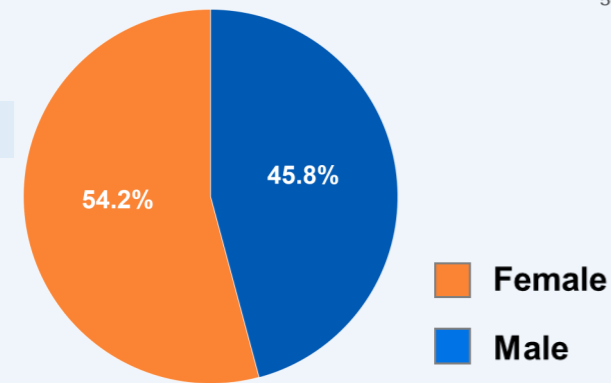


Age

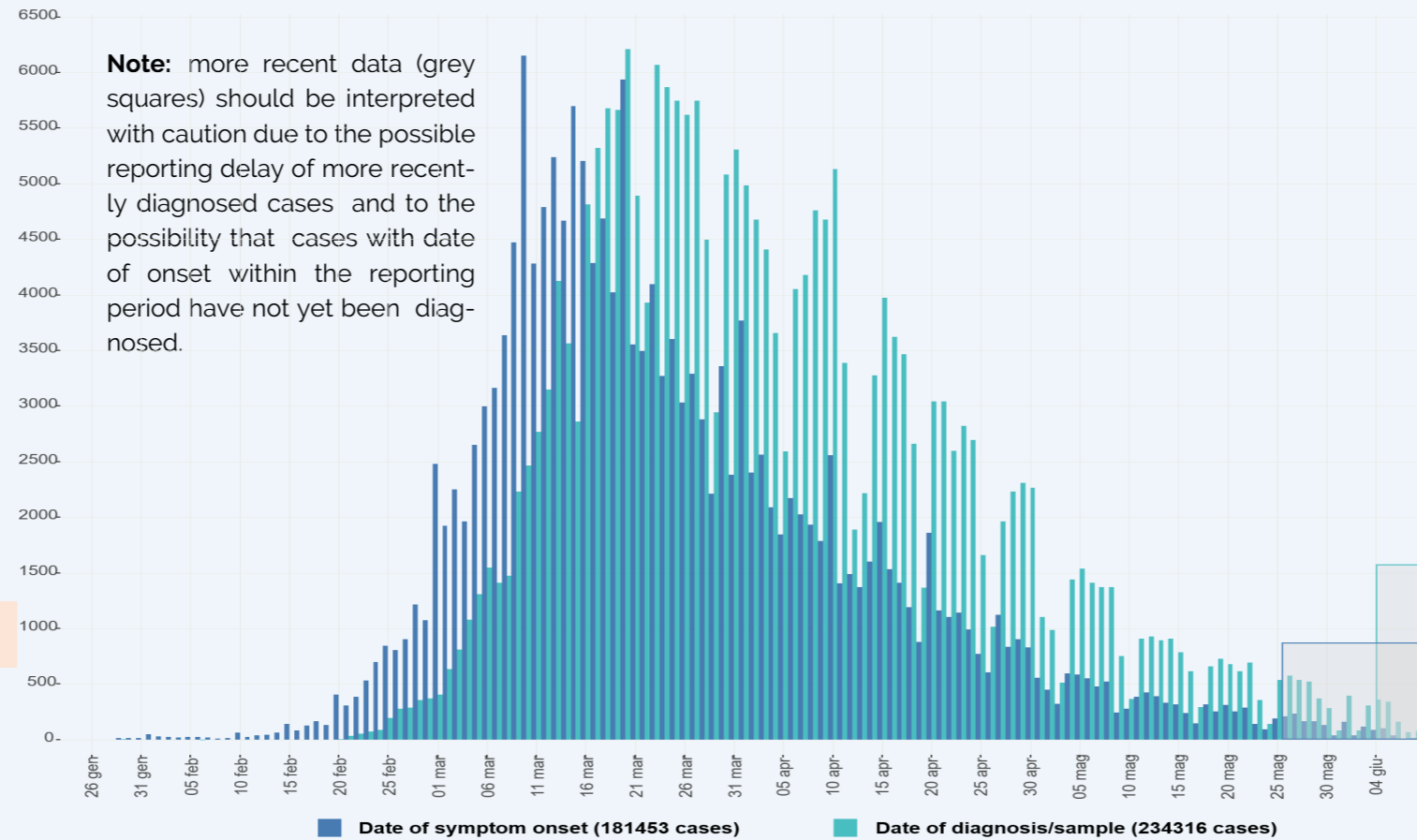


Median age of cases; **61**

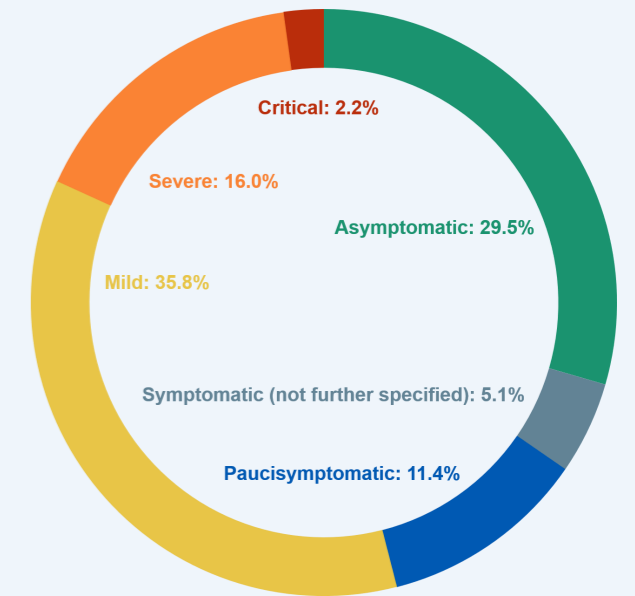
Sex



Age (years)	Deaths [n (%)]	CFR [§]
0-9	4 (0%)	0.2%
10-19	0 (0%)	0%
20-29	15 (0%)	0.1%
30-39	64 (0.2%)	0.3%
40-49	281 (0.9%)	0.9%
50-59	1144 (3.5%)	2.7%
60-69	3344 (10.2%)	10.6%
70-79	8768 (26.7%)	26%
80-89	13445 (40.9%)	32.7%
>=90	5802 (17.7%)	30.7%
Not reported	0 (0%)	0%
Total	32867 (100%)	13.9%

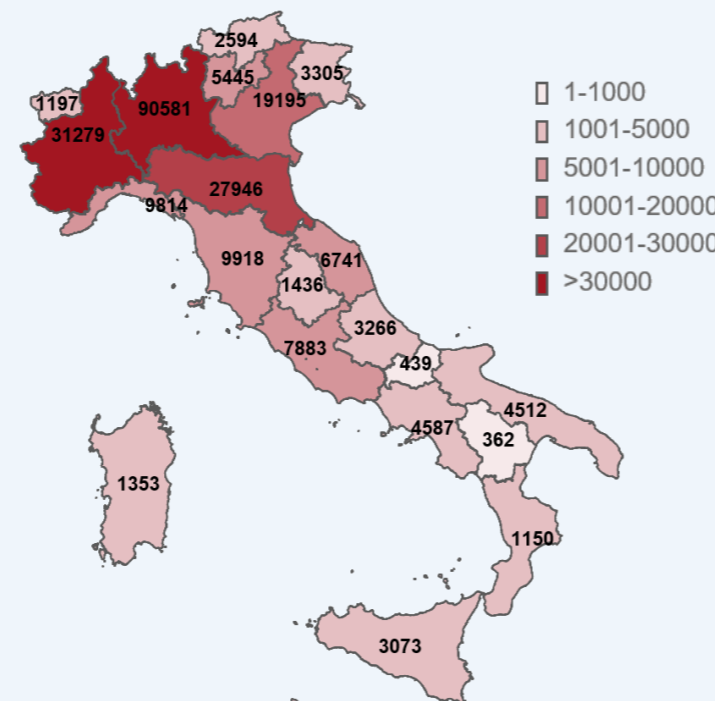


99% of the clinical samples processed were confirmed by the National Reference Laboratory at the Istituto Superiore di Sanità



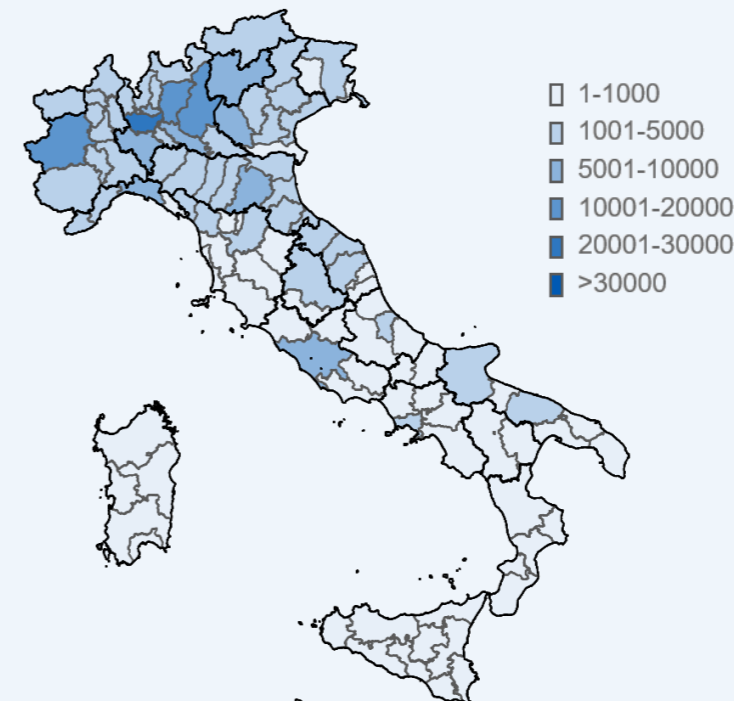
Data available for 26,466 cases

Total number of COVID-19 cases diagnosed by the Italian Regional Reference Laboratories



By Region/Autonomous Province of diagnosis

(data available for 236,076)



By province of residence

(data available for 233,144)

*The case definition considers as a confirmed case any person with laboratory confirmation of virus causing COVID-19 infection, irrespective of clinical signs and symptoms <https://www.ecdc.europa.eu/en/case-definition-and-european-surveillance-human-infection-novel-coronavirus-2019-ncov>

*ISS collects data on cases that tested positive for SARS-COV-2 infection diagnosed by all Italian Regions/Autonomous Provinces. Data could differ from aggregated data from the Italian Ministry of Health and the Italian Civil Protection. [§]The term "health-care worker" is based on the occupation and not on the place of exposure. [§]Case Fatality Rate