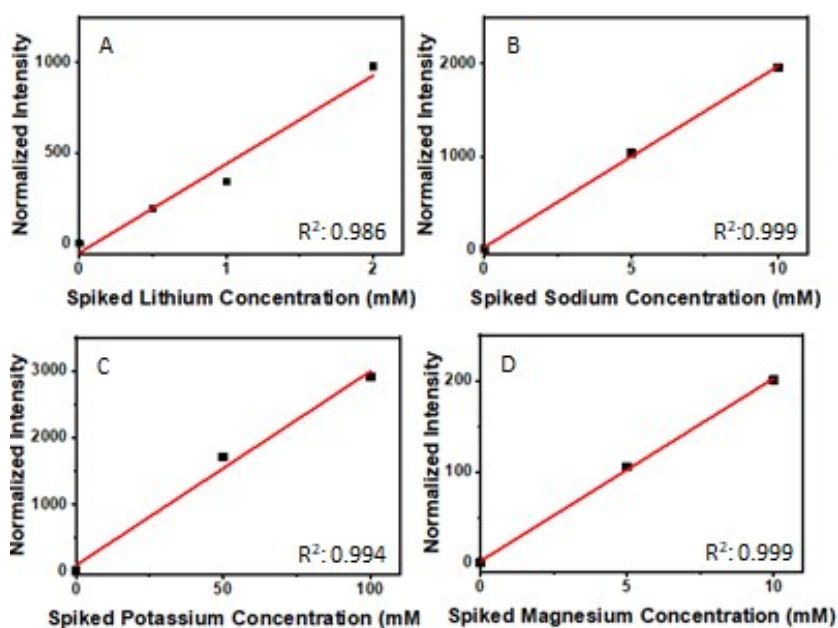


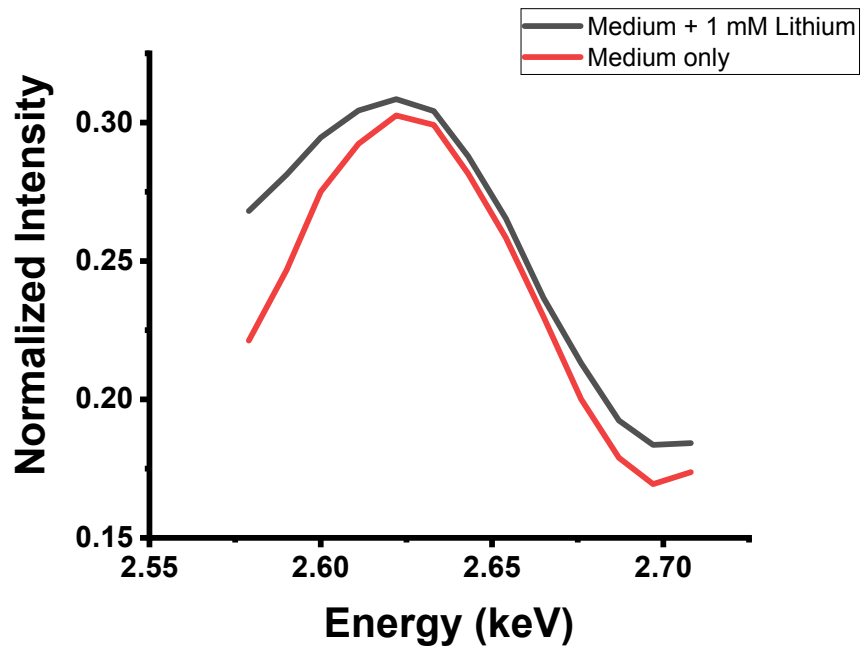
Electronic Supplementary Information

FROZEN! Intracellular multi-electrolyte analysis measures millimolar lithium in mammalian cells

Renardi Gunawan[#], ^[a] Al Imran[#], ^[b] Irfan Ahmed, ^[b,c] Yuanchao Liu, ^[b] Yanwu Chu, ^[d] Lianbo Guo, ^[d] Mengsu Yang, ^[a] and Condon Lau^{*[b]}



Supplementary Figure 1. Standard addition calibration curves of different concentrations of lithium (A), sodium (B), potassium (C), and magnesium (D) on a blank petri dish (i.e. no cells). Note that the intensity of each analyte is close to 0 with 0 spiking concentration, indicating that the Petri dish and sample preparation method does not introduce contaminants.



Supplementary Figure 2. XRF analysis of intracellular chlorine. Signals of cells grown in normal medium and in 1 mM lithium containing medium.