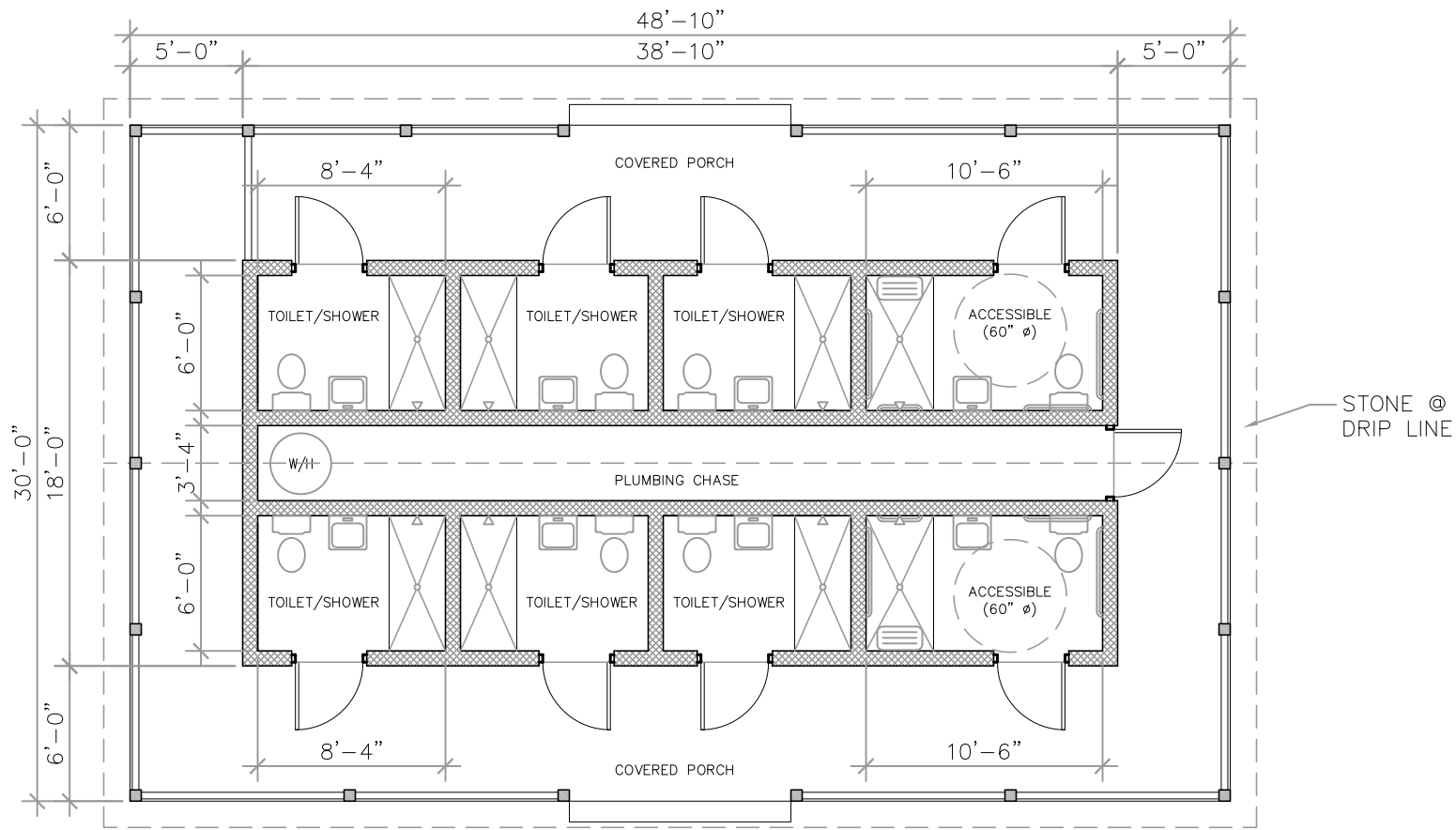


DATE: OCT. 7, 2014

CAMP SHOWERS & LATRINES

BOY SCOUTS OF AMERICA
 PROPERTIES DEPARTMENT
 1325 W. WALNUT HILL LANE
 IRVING, TX 75038
 972-560-7889
 www.scouting.org/properties

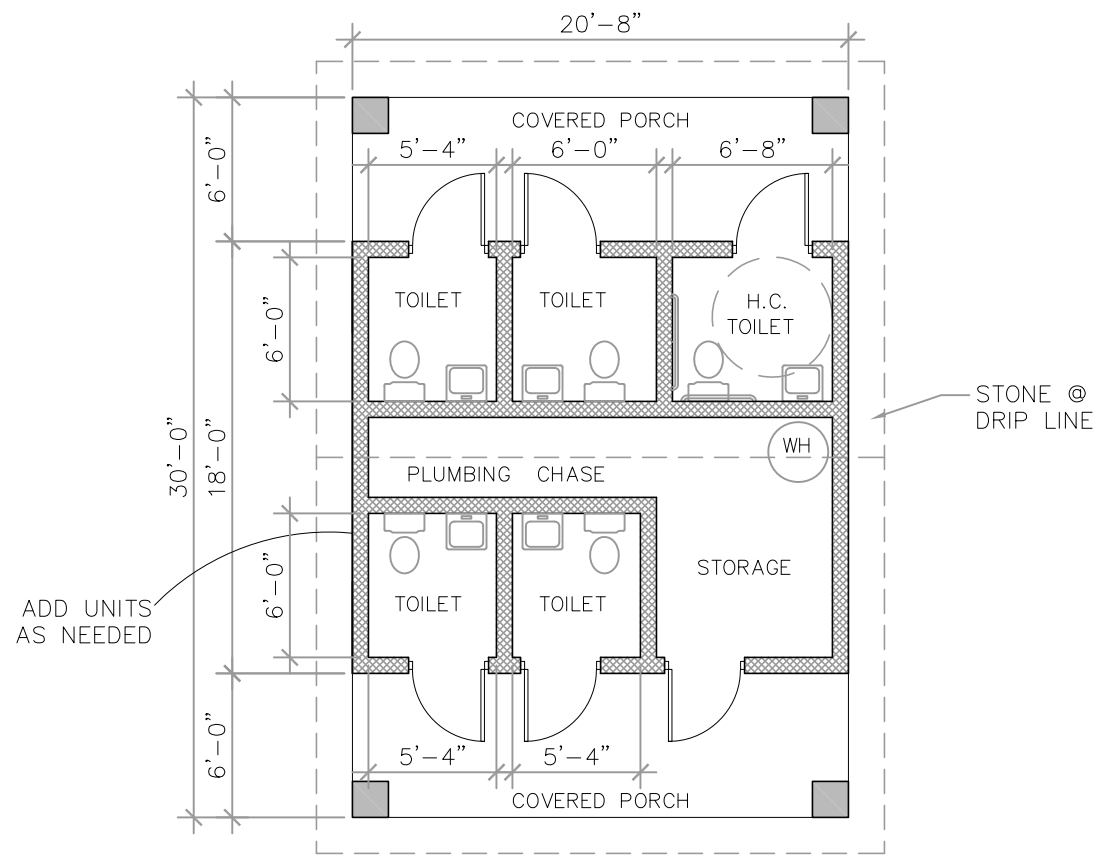
SK-1



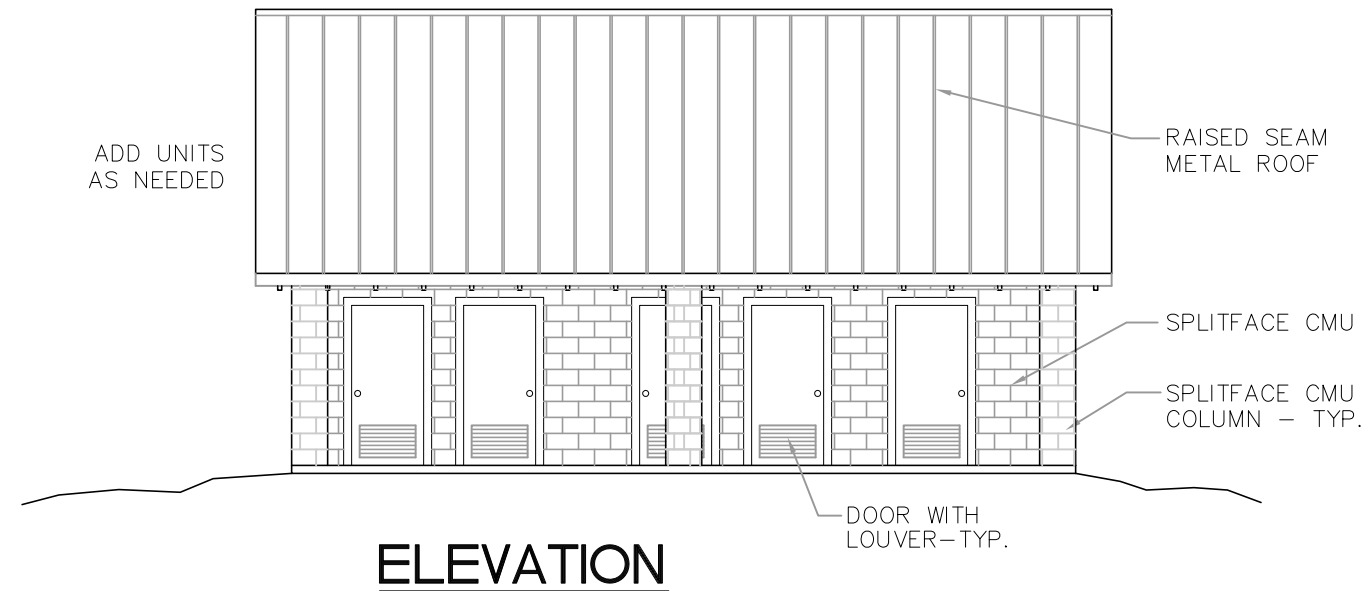
FLOOR PLAN FOR USE IN SUPPORT OF CAMP SITES

GENERAL NOTES

1. CONSULT WITH APPLICABLE AUTHORITY FOR COMPLIANCE WITH LOCAL APPROVED METHODS, CODES, ADA REQUIREMENTS, ETC..
2. STRUCTURE IS INTENDED FOR YEAR ROUND USE.
3. PLUMBING CAN BE POSITIONED TO ALLOW FOR A SINGLE SIDE USAGE DEPENDING ON CENSUS IN CAMP.
4. PROVIDE ONE EXTERIOR HOSE BIBB AT BOTH SIDES OF BUILDING.
5. LIGHT FIXTURE AND EXHAUST FAN TO BE ACTIVATED BY MOTION DETECTOR.
6. USE LOW FLOW WATER CLOSETS
7. INTERIOR WALLS ARE MASONRY, FLUSH JOINT, BLOCK WITH EPOXY, COLOR WHITE, SEALED.
8. DOORS ARE HOLLOW METAL IN HOLLOW METAL FRAMES.
9. CONSIDER SPECIFYING STAINLESS STEEL PLUMBING FIXTURES (SINKS AND WATER CLOSETS.)
10. PLAN IS LAID OUT USING STANDARD BLOCK DIMENSIONS.
11. PROVIDE ELECTRICAL POWER FOR HAND DRYER OPTION.
12. CONSIDER HIGH CAPACITY POWER ASSISTED VENTING TO PREVENT MILDEW FROM MOISTURE BUILD-UP.



FLOOR PLAN FOR USE IN SUPPORT OF PROGRAM AREAS



ELEVATION